

# DISTINCTLY WINKLEIGH



Working for Winkleigh



Edition 67

Autumn 2018

*Cover sponsored by  
Ian Shacklock, MTF Training, Moortown Farm, Winkleigh. 01837 83325*

---

## The Winkleigh Society Quarterly Journal

## Clotworthy House

Let us help you take the stress out of family or friends coming to visit. Clotworthy, a period Georgian house close to the village centre, offers 4\* Gold Award accommodation.

All rooms are large and with good views, and all have en suite facilities with free standing baths or showers.

Give us a ring for availability or send us an e-mail.

## **Clotworthy House Bed & Breakfast**

**Torrington Road, Winkleigh, Devon EX19 8HR**

**Telephone Susan or John Short: 01837 83709**

Email: [enquiries@clotworthyhouse.co.uk](mailto:enquiries@clotworthyhouse.co.uk)

Web: [www.clotworthyhouse.co.uk](http://www.clotworthyhouse.co.uk)



**Winkleigh's Family Run Residential  
Sales & Lettings Agent**

**Pop into our office or call us for a FREE  
no-obligation Valuation of your Property.**

**01837 83393**

**E: [vickie@howesestates.co.uk](mailto:vickie@howesestates.co.uk) :**

**W: [www.howesestates.co.uk](http://www.howesestates.co.uk)**

**The Old Bank Hall, High Street, Winkleigh, EX19 8HX**

## Winkleigh Society News



Our flagship event this year will be hosted by **Beaford Arts** who now curate the **James Ravilious archive**.

### **Ravilious Photographic Exhibition & Slide Show:**

**Saturday 22<sup>nd</sup> September at 7 pm - Community Centre.**

James Ravilious throughout the eighties and nineties quietly and diligently recorded a disappearing way of life between the Taw and the Torridge. He was a well-known and instantly recognisable figure in Winkleigh and surrounding villages. He travelled around in a three wheeled Reliant, he wore a beret, around his neck a satchel and always his trusty Leica camera. His pictures were not posed, intrusive or staged. Major events were covered e.g. Winkleigh Fair and village Fetes, but he was interested in people's working lives and everyday comings and goings.

Since his death in 1999 he has achieved international recognition for the quality of his work bearing witness to local people, their work, homes and customs.

**Come along and see who you can recognise and what stories you could add that shed more light on the stories behind the photographs.**

*Penny Griffiths & Margaret Miller.*



Photograph by James Ravilious © Beaford Arts  
slightly scanned from a Beaford Archive negative

## The Winkleigh Society - Art Exhibition & Competition

This year **The Winkleigh Society** curated an Art Exhibition and Children's Art Competition as our contribution to Winkleigh Fair.

With the help and collaboration of **Winkleigh Art Group** (led by Helena Lewis) an impressive collection by local artists and photographers was displayed in the Community Centre on Friday afternoon and all day Saturday. There was a range of styles, techniques (acrylics, pastels, oil and mixed media) ranging from established professional artists and photographers to keen amateurs and students.

On display were detailed botanical paintings and photographs, animal and human portraits, magical dragons and landscapes. Alan Jacobs' vivid photographs, Stone Naylor's shots of the village and Red Hanlon's aerial view of the Square gave the exhibition a dramatic sense of place.



## Andy Barratt

ACIPHE Reg Plumber no 019139G

**FULL BATHROOM INSTALLATIONS**

**WALK-IN SHOWERS**

Full Tiling. Plastering and Electrical Incorporated

Competitive Rates & Professional Advice.

Fully Insured and Guaranteed.

Over 30 Years Experience.

Call Out Service for all your plumbing problems.

Home 01837 83025 Mobile 07850634670

Email [andrew.barratt5@btinternet.com](mailto:andrew.barratt5@btinternet.com)

Smythen Hill Cottage. Hollocombe.

Alongside this we displayed the 20 entries for The Winkleigh Society's children's art competition entitled "***Winkleigh Through My Eyes***". This was inspired by the observation from the recent traffic survey that Winkleigh is invisible. We held a public vote to decide the two winners in each category, ballot box style.

[Age 4-8]	<b>1<sup>st</sup> Daniel Rhodes</b>	<b>2<sup>nd</sup> Hazel McKinnell.</b>
[Age 9-11]	<b>1<sup>st</sup> Rosie Bolt</b>	<b>2<sup>nd</sup> Anna Knight.</b>
[Age 12-18]	<b>1<sup>st</sup> Lucy Burgoyne</b>	<b>2<sup>nd</sup> Ellie Bridgman.</b>

Over 60 people voted which sparked conversations and lively debate as they posted their votes in the three age categories. Thank you to all the 20 children who submitted their ideas for street art. The prizes, quality art materials (funded by a generous parishioner), were presented on Fair Saturday in The Square by Tony Aston.



Thanks to The Chapel Youth Club and the Saturday Monthly Market where we workshopped the art competition and to all the WS committee who enthusiastically committed to this effort to showcase the impressive range of artists in Winkleigh.

*Penny Griffiths, Chair Winkleigh Society*



## CHULMLEIGH COMMUNITY COLLEGE

### OPEN EVENING

**TUESDAY 18<sup>th</sup> SEPTEMBER 4.30-7pm**

**Presentations by Executive Headteacher Michael Johnson ~ 5pm & 7pm**

We invite prospective pupils & parents/ carers to an interactive evening to find out more about our school.

Meet our teaching staff & take part in activities across all subjects.

We look forward to meeting you!



[www.chulmleigh.devon.sch.uk](http://www.chulmleigh.devon.sch.uk)
[01769 580215](tel:01769580215)

[@ChulmleighAT](https://twitter.com/ChulmleighAT)


[admin@chulmleigh.devon.sch.uk](mailto:admin@chulmleigh.devon.sch.uk)

[f @ChulmleighAcademy](https://www.facebook.com/ChulmleighAcademy)

## Writing Competition – Primary Runner-Up

## *'The Lost Object'*

The year was 1599 and a young servant wearing expensive clothes, walked to the centre of Winkleigh village, and read off a parchment, “Oye, Oye! Anyone who finds the lost bronze seal and hands it in to Thomas Barret will be rewarded with 75 silver coins. I repeat. Anyone who finds the stolen bronze seal and hands it in to Thomas Barret will be rewarded with 75 silver coins.” He said in a booming voice.



Meanwhile, a middle-aged man rode through the muddy streets of Winkleigh. This particular man was named Thomas Barret and he was on his way back from Exeter Cathedral. Thomas was at the Cathedral for he was an Archdeacon; he is very proud to be an honorary member of the Church and undertaking such important duties of preaching, supervising the deacons and the distribution of alms. Thomas had dark brown hair - which was beginning to turn grey - a prominent nose and jaw, he wore brown knee high boots, grey comfortable trousers, a fiery red waistcoat and finally it was topped off with a beige cape. These clothes were very expensive.

Thomas Barret rode on his beautiful and elegant friend, Spirit the Shire horse. He named the horse Spirit for her coat was a smudge between black, grey and white, which made her seem spiritual. Thomas was on his way back from the Cathedral because someone had sent him a letter saying his bronze seal had been found.

Through the village, Thomas rode past his neighbours. As usual, they just glared at him with envious looks for if you were an Archdeacon, then you would have a very large salary.

Back at his new, luxury house, Thomas waited for his bronze seal to arrive; yet he had no idea what was really going on...

Meanwhile, at a small cottage, Mr. Lansford and Mrs. Gallo were having a meeting about Thomas and his seal. They didn't like Thomas for he was rich and he had written a book about witchcraft. They thought he was an evil man for he would burn anyone accused of being a witch, alive!

Mr. Lansford said, "He's already got loads of money! Why should he have the seal! We must keep it."

"I'll have you know Mr. Lansford, I found the seal and I choose what to do with it." Mrs. Gallo exclaimed. At this point they were both arguing and deciding what to do with the bonze seal, until Mrs. Gallo had an idea.

"This is what we'll do, tonight we will kill his horse so he will be so sad and distracted that he won't see us come to kill him."

"Yeah, he won't be able to burn any more people and we can use his seal!"

So at the dead of night (when Thomas was fast asleep) two black figures emerged from the darkness holding shiny daggers. The figures sneaked into Spirit's stable and cut a slit through the horse's throat. In the moonlight, blood was slowly spreading on the stable floor turning the straw into a red, shiny blanket.

In the morning, Thomas got up and thought,

'I wonder when my seal will be returned to me.' He then went out to feed Spirit and barely made it through the door. Thomas fell to his knees and wept.

"Who could have done such a cruel sin, who?" shouted Thomas through his tear stained face. Thomas in his despair had not noticed the two figures standing behind him, until he saw the shadows in the morning light. Thomas turned around to find the two of them standing there with daggers in their hands. As she was approaching, Mrs. Gallo dropped something on the floor. Thomas only had a split second to see that it was his seal. In the next instance, blood was pouring out of his chest and he fell to the floor. Dead.

## **Winkleigh POST OFFICE**

*~ Not just a Post Office! ~*

**Large range of Greetings Cards, Gift wrap & Tags**

**Toys & Stationery**

**Photocopying, Scanning, Laminating & Fax service**

**Laundry & Dry Cleaning**

**Travel Money**

**Car Tax**

**Mobile top-ups & electric key charging**

**Cash Withdrawals at the Counter**

**Open 8.30 am-5.30 pm Mon-Fri**

**9 am-1 pm Sat**

**01837 83427**

**Owner: Tony Bayley**

To make sure that no one knew what they had done, they both had to throw Thomas and his horse in the old moat of Croft Castle. What they hadn't realised was that as Thomas fell to the floor he had grabbed the seal. Mr. Lansford and Mrs. Gallo couldn't find the seal and hoped that no one else would.

Over the years, Croft Castle developed into a hill with all the grass growing around it and you could not see the moat anymore. However in 1990 a woman -Mrs. Dent - dug into the hill and found the remains of Thomas Barret and his horse. When she showed it to scientists, they found out that he was an old Archdeacon. They also found the seal but let Mrs. Dent keep it for she found it.

As for Thomas Barret, no one knew what had happened to him except for the two murderers. Some thought he moved away yet others thought he died of old age.

But no one knew for sure...

## *The End*

*Written by Lola Fitzsimmons (Age 10)*



**JAD MOTTRAM**  
**PLUMBING & HEATING**

Gas • LPG • Oil • Solid Fuel

All Plumbing & Heating Works  
Multi Fuel & Wood Burning Stoves  
Drainage & Septic Tank Installation  
Residential Park Homes  
Static Caravans

[www.plumberinsouthmolton.co.uk](http://www.plumberinsouthmolton.co.uk)  
[jadmotttram@hotmail.com](mailto:jadmotttram@hotmail.com)

01769 560985 / 07933 166664



**Need Help In the Garden?**

**RHS Qualified, Experienced  
Gardener**

**All Aspects of Garden Maintenance**

**Planting Ideas**

**Year Round Reliable Service**

**Call Maxine on 01837 680039  
or 07815 309023**



## The Daily Mile 'Run for Fun'



The **Daily Mile 'Run for Fun'** was an absolutely fantastic day and brilliant success. The weather was perfect, and the support of the parents and teachers was wonderful. The children from the foundation unit and primary school ran a very impressive 52 miles in the mile relay – the equivalent of two marathons! All of the children really enjoyed the morning and all of the activities on offer. The limbo, hurdles and welly throwing proved to be the most popular of the events.

We would like to thank all the companies that donated to the event and all the amazing teachers and volunteers who helped with the smooth running of the day.

The **total amount raised is £4,756.00**. This amount includes donations from local companies, sponsorship from the children and the cake and refreshment stalls.

The very generous companies include All Done Up, Beardon Engineering, Changes Hair Salon, Clayton Cabinets, Cutting Edge Painters, GFive Design, Howes Estate Agents, Mad Butcher, Read's Roofing Ltd, Robinson Plant Ltd, The Co-op Okehampton, The Window Doctor, Waitrose Okehampton, Westward Housing Association, West Ridge Veterinary Practice, Winkleigh Cider, Winkleigh Clothing Company, Winkleigh Post Office

Our fabulous volunteers – Emma Rhodes, Marion Pratt, Margaret Bridgeman, Xeni Robinson, Kirsty Smith, Laura Covington.

**THANK YOU, THANK YOU, THANK YOU!**

*ALLY, KATE, TANYA AND NIKKI XX*



## **'RED FLORAL TRIBUTE' - St. Peter's Church, Dowland**

To commemorate 100 years since the end of World War 1, St Peter's Church, Dowland (EX19 8PD) is taking part in the **'There but not There' National Project**, by creating a twelve metre long flower garland and other floral arrangements using only **red** flowers. This unique display, using only one colour, will provide a powerful reminder of how important the lives of those who did not return are to us today and will span the length of the Church, encircling pews containing the silhouette figures of our soldiers, representing how we will continue to remember the young members from our village who lived and died over a century ago.

As Dowland is such a small Parish, **I am asking for the help of Winkleigh residents.** **Please could you donate a red flower** for the garland: Either a fresh red flower from your garden, florist or supermarket, or handmade from paper, ribbon, fabric, clay, knitted, literally anything, any flower but it **must be RED**. Fresh flowers can be given to me on either **Wed 24<sup>th</sup> or Thurs 25<sup>th</sup> October** but the others can be donated at any time. If you cannot get your flower to me at **The Beeches, Dowland**, I can get it collected. Individually you are donating a flower, but with all the flowers together our community can create a powerful symbol of remembrance, as the garland surrounds our soldiers who made the ultimate sacrifice.

**The event will be held over 3 days: 26<sup>th</sup>, 27<sup>th</sup> and 28<sup>th</sup> October, from 10.30 am until 7.00 pm each day. It is free to enter** with the opportunity for visitors to donate to the **charity 'Remembered'**, with all money raised going to the charity helping those who are suffering the effects of war today.

If you have any family stories of the war to share, please come. We even have the Bagpipes! Refreshments will be available in the Church with **an information display by The Commonwealth War Graves Foundation**. The message of commemorate, educate and heal is our overriding goal, and through providing a reflective and informative event, we feel we can pay our respects to those who did not return.

***Thank you,***

*Sue Dunn [susiej03@hotmail.com](mailto:susiej03@hotmail.com) (best contact please) - 01805 804351*

## **War Horse 10K Race - Sunday 23<sup>rd</sup> September 2018 @ 11 am**

This event will be our first 10K race; it is also the **100th year Anniversary of Armistice Day**, so, as the run is in **War Horse Country**, we thought it was the perfect time to start. The race will start and finish in the beautiful village of **Iddesleigh**, and includes some private land. This is a scenic 10K, 90% of which is on the road.

**All proceeds are for The Friends of St James Iddesleigh.**

*For more info and how to enter visit our Facebook page or  
phone 01805 804347*



## The Winkleigh Singers

*Registered Charity Number 1171218*

The Winkleigh Singers programme for 2018 started with a jubilant concert in Torrington Church in April, featuring Handel, Mozart and Haydn choral works along with a wonderful organ solo from David Read. Our soprano soloist Donna-Marie Broomfield delighted us all with her solos, Mozart's Exultate Jubilate and Laudate Dominum and we all waited for that wonderful final Alleluia which raised the roof and left us with hardly a dry eye!

We were invited to perform in Atherington Parish Church for their flower festival in June and enjoyed giving our repertoire of madrigals and part songs in this lovely setting and on a beautiful evening.

The Choir is also taking part in a '**Come and Sing Brahms' Requiem' in Torrington Church on 13th October**. A workshop to be led by Roland Smith will start at 2.00 pm, £12.00 to take part including music hire and light tea, followed by a free performance (retiring collection for church funds) at 6.00 pm, ending at 7.15 pm.

The **Traditional Christmas Concert** returns to **Winkleigh Parish Church on Saturday 15th December** and will include Vivaldi's Gloria and plenty of carols for all to sing.

The **next term starts on Monday 3rd September when the choir invite you to an Open Rehearsal** to come along and sing and see if you would like to join this vibrant choir. (Particularly tenors and basses!) We practice in Umlerleigh at the Christian Fellowship church (conveniently on the A377 opposite The Rising Sun pub) at 7.30 pm every Monday in term time and have a break for coffee and catch up with fellow members at half time.

See our website [www.winkleighsingers.org.uk](http://www.winkleighsingers.org.uk)



*The Winkleigh Singers*



Winkleigh  
**01837 83229**

## Electrical Contractors

- Rewires, New Builds, Extensions
- Consumer Unit Upgrades
- Showers, Cookers, Heating
- Internal / External Lighting
- Sockets & Telephone points
- CCTV & Networking
- Testing & Inspection (inc PAT Testing)



## Shirley Cowling Remembered

Born and raised in Chelsea, Shirley made a great leap of faith (after graduating from London University with an Honours degree in philosophy) by marrying apprentice farmer Derek and following him to set up a dairy farm, first in Holsworthy and in 1963 in Winkleigh where they settled with their two sons David and Mark at Herdwick.



The milk cheque was never going to cover all expenses. With an expanding family (Caroline was born in 1973) Shirley hosted Tupperware parties so successfully she became an area manager, wrote regularly for *Farmers Weekly* and taught infants at Beaford School (though not all at the same time).

A great crafter, Shirley taught herself to use a knitting machine and created her own patterns which were used in knitting magazines. In village fashion shows local children modelled her creations with an agricultural theme. Shirley held classes at the farmhouse which later developed into a 'knitting holiday' business.

A regular contributor to *Distinctly Winkleigh* (also one of the judges in the recent children's writing competition), Shirley loved to write and ran her own writing group exploring different themes, genres and styles. If we were ever stuck for a quote, reference or who wrote what Shirley would consult her extensive library and come up with the answer quicker than Google.

What began as *Art on Prescription* (after the death of her Mother and Husband) led to graduating from Petroc with a Degree in Illustration and then publishing her illustrated children's story about Harriet the Hare. This story was inspired by a photograph of a hare taken by her granddaughter Katy on the family farm.

Zooming around in her red mini Shirley was a familiar and much loved character in the village. A loyal supporter and champion of local shops and village life.



Always interested and interesting, erudite, independent and great fun.

*Penny Griffiths*

## **WINKLEIGH PARISH COUNCIL**

### **NOTICE OF CASUAL VACANCY - 30<sup>th</sup> July 2018**

Notice is hereby given that a co-option vacancy has occurred among the members of the Parish Council. Any person willing to fill this vacancy should apply to the Clerk in writing or by email.

Any person wishing to apply to become a member must meet at least one of the qualifications set out below in order to be eligible for co-option and must not be disqualified under Section 80 of the Local Government Act 1972.

- The applicant must be registered as a local government elector for the parish; or
- The applicant should, during the whole of the twelve months preceding the date of co-option occupied as owner or tenant, land or other premises in the parish; or
- The applicant's principal or only place of work during those twelve months has been in the parish; or
- Have during the whole of twelve months resided in the parish or within 3 miles of it.

PUBLIC elections cannot be held until the year 2019 but for the interim period the present sitting Councillors may co-opt to fill the vacancies.

*Melanie Bickell, Winkleigh Parish Clerk*  
*01837 89095, [winkleighpc1@btconnect.com](mailto:winkleighpc1@btconnect.com)*  
*Lower Itton, Spreyton, EX17 5BB*



**SAM'S CIDER**  
THE PROPER DEVON CIDER

**Celebrating 100 years of cider being made on site**

Makers of award-winning proper Devon cider

[www.winkleighcider.co.uk](http://www.winkleighcider.co.uk) info@winkleighcider.co.uk Follow us on Facebook & Twitter

You can visit us at Winkleigh Cider Company, Western Barn, Hatherleigh Road, Winkleigh, Devon, EX19 8AP  
Onsite gift shop and local produce

## Our Patch

Above my desk is pinned an Ordnance Survey 1:25,000 map centred on my house in Winkleigh. (These make excellent presents for people moving house, and are available on the OS website.) The area covered extends 10 km in each direction, making a square 20 km x 20 km. The OS map is a key to so many interesting facts.

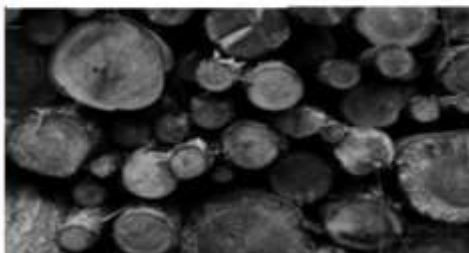
On this map, which includes three places that think of themselves as towns, Hatherleigh, Chulmleigh and North Tawton, there is no supermarket. There is now no bank other than mobiles visiting once a week or so. There is no cattle market. There is a secondary school at Chulmleigh, but there is none with a Sixth-form. This is perhaps the most rural part of England apart from moorlands.

The map also shows both parish and district boundaries, and the area is divided between four district councils, Torridge (including Winkleigh), North Devon (which includes Chulmleigh), Mid Devon comes close to us including Wembworthy, and West Devon including Hatherleigh and Exbourne. Each of these districts has its administrative centre well outside the map area, in Bideford, Barnstaple, Tiverton and Tavistock. Not surprisingly we do sometimes feel at the bottom of the priority list in every district. Sometimes too, we quite like it that way.

Despite being the forgotten part of four different political administrations, the area can claim a distinctive identity. Stand on any hilltop and you are looking over a flat plateau sloping gently to the south, though you know perfectly well that you are looking over many deep valleys hidden from view. One 18<sup>th</sup> century writer thought you could hide an army in the valleys and no-one would know.

The plateau is largely dunland, carboniferous rocks overlain with a juicy clay we all know only too well. It is pretty wet as well, and the flatness prevents the water getting away too easily. Indeed the area is a model of resilience to rainfall, with all the villages on the edge of the hills, their churches visible for many miles.

### Local Logs



Dry seasoned hardwood  
All stored under cover & delivered in  
Chulmleigh & surrounding area.

Truck Load	£80
Double Load	£160
Trailer Load	£270
Net of Logs	£4
Net of Kindling	£4.50

Martin 07817 464420 parish@btinternet.com  
[www.mpocontracts.co.uk](http://www.mpocontracts.co.uk)

Our most precious ecological possession, the culm pastures with sedge, scabious and a distinct set of fauna and flora, are not an artist's ideal of the picturesque, and are not rambling country, not without good boots. Tourists tend to pass us by, and sometimes we may be thankful for that as well.

A new book is slowly coming together called 'The Land between the Moors', (Dartmoor and Exmoor). Yet another negative; it has no name of its own, only between other places. I notice that Thuringia calls itself The Green Heart of Germany, so our place can be The Green Heart of Devon.

James Ravilious, the photographer, once told me that he worked in black and white because there was too much green around here! Clay, plus rain, plus nitrogen create a green that can hurt the eyes.

Maybe that is why my favourite entry to our distinctive space is turning off the A377 at Morchard Road at night, where the darkness begins and the Milky Way (if it isn't raining), and there are little clusters of lights from the hills, showing the villages, Zeal, Coldridge and finally Winkleigh.

*Peter Howard*

## **Watercolour Art Classes**

Have fun and build up confidence

### **Broadwoodkelly Village Hall**

**Wednesdays & Thursdays**

**10.30am to 1pm**

**fortnightly starting mid-September 2018**

**For more details please contact:-**

**Celia Olsson**

**Tel: 01837 82 796**

**Email: martinolsson827@btinternet.com**



## **Local legal advice**

Call our Crediton office on **01363 77 55 66**

Manor Office, North Street, EX17 2BR

Visit **[gilbertstephens.co.uk](http://gilbertstephens.co.uk)** for more info

Gilbert Stephens is the trading name of Gilbert Stephens LLP which is authorised and regulated by the Solicitors Regulation Authority (no. 536670).

**FREE 20mins  
consultation**

## **An Update on the Winkleigh Neighbourhood Plan**

Work on the development of the Neighbourhood Plan for Winkleigh has accelerated recently. A timetable for the Plan was recently agreed with the Parish Council and this targets the publication of a draft Plan in October/November of this year. There would then follow a 6-week period of consultation, consideration of comments received and then the publication of a revised document. The final stages – external examination of the Plan, and a local referendum (open to all parishioners) would occur early in 2019.

The main sections of the Plan focus on:

- traffic and transport, building on the ideas developed by Ben Hamilton-Baillie when he visited Winkleigh;
- housing development, and specifically the identification of a development boundary for new housing applications;
- our environment and natural resources, and their protection;
- the development of the Winkleigh economy, including proposals for the Airfield site, and how policies on land use can support new enterprise across the Parish.

### **CoHeat Services**

#### **Oil-fired Heating and Cooker Specialists**



**Oil-fired Boiler, Rayburn and Aga Servicing**

**New heating systems fitted**

**All plumbing work undertaken no matter how small**

**Heating systems updated.**

**Complete bathrooms and kitchens including tiling and all associated**

**works carried out. You supply, I fit, or I supply everything**

**and fit as long as you supply coffee . . .**

**For a free quote or just friendly advice call John on**

**01837 83080 or 07768 164696**

All the policies we propose in the Plan have to align with national planning guidance, and with the Torridge District Council Local Plan which is nearing completion.

It should be emphasised that this new Plan seeks to build upon previous work undertaken, such as the Parish Plan, the Community Plan, and the Village Design Statement. Whilst much of the content of the Neighbourhood Plan will therefore be familiar **this Plan will, when adopted, acquire legal status. Its policies and provisions will be central to the determination of future planning applications within the Parish and proposals for changing the use of land.**

Whilst we believe there has been extensive discussion and consultation about the content of the Plan there are still opportunities for parishioners to engage with those of us working on the Plan and submit their views and ask questions. The Planning Group attends the monthly market in the Village Hall and we are happy to chat there. Comments can also be sent to me directly.

*Councillor Adrian Mercer  
Chair, Neighbourhood Plan Group  
Cllr.Mercer@outlook.com*

## **Sueno Beauty**

**Changes, Exeter Road, Winkleigh. EX19 8HW**

### **Aesthetic, Massage & Holistic Therapies**

- Swedish Massage
- Deep Tissue Massage
- Aromatherapy Massage
- Hot Stone Massage
- Hopi Ear Candles
- Reflexology
- Micropigmentation
- Micro Needling

**Contact: Gemma Jenkins Tel: 07590233607**

**Email: [suenobeauty@outlook.com](mailto:suenobeauty@outlook.com)**

**Facebook: [@Suenobeauty](#)**

# FORGET-ME-NOT FRIENDS

## WINKLEIGH COMMUNITY CENTRE

Everyone is welcome, especially people affected by memory loss and their carers. We provide tea and a friendly atmosphere for those wishing to socialize for an hour or two each month.

Our special events have included speakers from the See-Hear Centre, Pets As Therapy, Devon Air Ambulance. We have held Poetry sessions, Floral Arrangement, Massage and Aroma Therapy, Movement to Music and other interesting presentations, as well as a visit to Rosemoor.

Advice surgery every second Wednesday of the month, 9.15-11.15.



**Drop in between  
2 – 4pm**

**First & third  
Wednesday  
every month**



Chat

Laugh

Reminisce

Make new  
friends

Special  
events

### Dates 2018 - 2019

Aug 1 <sup>st</sup>	&	15 <sup>th</sup>
Sep 5 <sup>th</sup>	&	19 <sup>th</sup>
Oct 3 <sup>rd</sup>	&	17 <sup>th</sup>
Nov 7 <sup>th</sup>	&	21 <sup>st</sup>
Dec 5 <sup>th</sup>	&	19 <sup>th</sup>
Jan 2 <sup>nd</sup>	&	16 <sup>th</sup>
Feb 6 <sup>th</sup>	&	20 <sup>th</sup>
Mar 6 <sup>th</sup>	&	20 <sup>th</sup>
Apr 3 <sup>rd</sup>	&	17 <sup>th</sup>
May 1 <sup>st</sup>	&	15 <sup>th</sup>
Jun 5 <sup>th</sup>	&	19 <sup>th</sup>
July 3 <sup>rd</sup>	&	17 <sup>th</sup>

If you would like more information or you require a lift to the centre,  
contact Trish [patriciab@torrage.org.uk](mailto:patriciab@torrage.org.uk) 01237 420130  
or Marie-Claude on 01837 680145



SRGL (Supporting Rural Independent  
Living Project)  
Helping Older People In Rural Communities



NATIONAL  
LOTTERY FUNDED



## Should I Stay or Should I Go?

An old Clash hit single is an unlikely starting point for a new social enterprise aimed at supporting older and less able people to either move home or stay in their current property with appropriate changes/adaptations. But it sums up the dilemma confronting many older people when planning their future accommodation needs. Trying to think through all the ramifications of moving home or the implications of adapting property as an alternative to moving are both fraught with difficulty. Moving Together Devon attempts to minimise such difficulties.

Starting with a **free consultation** anywhere in Devon, we explore with you the feasibility of adapting your property if staying put is your priority. Alternatively, we clarify what options around moving are available to suit your requirements. We also identify with you the extent and nature of the support you feel you might need, working as closely with family and /or friends as you deem necessary.

**We won't put any pressure on you.** If you feel overwhelmed by it all and are just not ready or able to take the next step, we can provide a report with further resources and advice so you can think about it and share with friends and family. If you decide that moving home is something you want to pursue with our help, we will do as much or as little as you want. **We provide practical and emotional support**, ranging from helping find a new home, sorting belongings, dealing with other professionals, right through to moving in.

Moving Together Devon came about when Carole was faced with the dilemma of moving her own mother who is suffering with Dementia. As an Occupational Therapist, she had lots of experience working with disabled people in their homes, providing equipment and adaptations to give them a better quality of life. But she had also come across many people who knew they needed to move but didn't have the energy or support to do so. Moving her mother helped Carole realise that she and her husband Tom, who is also a Healthcare Professional, have acquired the necessary skills and expertise to help people through this process, towards a positive, more settled future.

Creating certainty and stability out of prolonged periods of doubt and uncertainty, allows us to let The Clash have the last words: "Against the odds I realize, this struggle could be won".

**We offer a free consultation visit  
anywhere in Devon.**

**[carole@movingtogetherdevon.co.uk](mailto:carole@movingtogetherdevon.co.uk)**

**[www.movingtogetherdevon.co.uk](http://www.movingtogetherdevon.co.uk)**

**01392 273067**

# **BONFIRE & FIREWORKS NIGHT**

## **FRIDAY 2<sup>ND</sup> NOVEMBER**



GATES OPEN 6PM

BONFIRE 6.30PM



FIREWORKS 7.30PM

## **WINKLEIGH SPORTS CENTRE**

### **BBQ and Licensed bar**

**Entrance: Adults £3 (16 and over)**

**Children £2 (3 – 16 years)**

**Under 3s Free**

*The use of sparklers are not permitted.*

**Organised by Friends of Winkleigh School**

*Friends of Winkleigh School are always looking for volunteers to help out at events, if you would be willing to help, please contact*

*Liz on 01837 83654. Thank you.*



**Twixtmoors**  
~upcyclers~

01837 83148  
www.twixtmoors.com  
The Airfield, Winkleigh

Are you looking to replace your old and worn out furniture?

Why not consider letting us upcycle it for you before throwing it out

You have nothing to lose ... if you do not like it when done you do not have to have it back  
We will move it on for you

## Winkleigh YFC

After writing in the last issue about the constant rain, cold and even snow, who would have thought then that for the next three months we would have been basking in endless sunshine to the point where we're now complaining about the heat!



Although harvests have started and finished earlier than usual, yields of corn and straw are down on last year due to the lack of rain. Grass needed to be cut for second cut silage hasn't hardly grown at all with fields burnt up with the heat. So although we all enjoy the BBQ weather and the stress of a catchy wet summer has been avoided, the following farming year could well be an interesting and potentially difficult one with feed and bedding costs high. Farmers are in many cases already feeding what should be feed stored for the winter.

**Even the non-farming public are likely to see food prices rise or certain veg crops (which need lots of water) in short supply.**

As for the young farmers, although busy with summer work in the good weather we've managed to fit a few things in!

On the **26<sup>th</sup> May we held our big breakfast** at Nethercott House, Iddesleigh (home of one our 8 charities) It was a successful morning's work raising **£360 for charity**. Thanks to all who attended.

We then helped out at open farm Sunday, again at Nethercott. We did activities with the public such as 'guess the weight of the lambs' and 'welly-wanging'. As well as this we helped do a small demo of silage making on the front field so members of the public and visiting school children could watch and see what is involved.

WINKLEIGH

07970 963450

INSTALLATION &

NEW AERIALS &  
FREESAT





AERIALS

0800 0930 625

MAINTENANCE

CARADON HILL  
HUNTSNAP CROSS  
STOCKLAND HILL

TV'S - BT VISION - HUMAX PVR - SET TOP BOX

RE-TUNING SERVICE



At the end of June we held a summer disco which was fairly successful and all money raised went in to our charity pot. We attended our group rally in July taking part in many individual and group activities. We've also held a couple of fun rounders and BBQ evenings to meet up and take advantage of the lovely weather

Our main upcoming event is our **80<sup>th</sup> Anniversary Ball** which is being held at **High Bullen Hotel on the 19<sup>th</sup> October 2018** with a meal and live band.

We would love to see as many past and present members as possible! So please contact **Claire on 07875790578 or Pete on 07530322490** for more details or to order tickets. And please spread the word!

If you're keen to know more or join us, September is the start of the Young Farmer's year so a great time to come along. Speak to Claire or Pete (numbers above) or go to: *Facebook ~ Winkleigh YFC or [www.devonyfc.co.uk](http://www.devonyfc.co.uk)*

*Katrina Brook*

## **Devon Bat Survey**

If you are interested in knowing which bats are flying over your garden, then you have the chance to find out this summer. The **Devon Bat Survey** is offering the free loan of equipment which you place outside for three nights; the data is recorded and you receive a free report on bat species found, plus lots of information on them.

Our local pick-up point for the monitors is **Eggesford Garden Centre**. Just book your date online (summer or autumn) and the square which contains your (or a friend's) garden or field, then collect the detector and return after 3 days.

Join the survey by visiting <http://devonbatproject.org/devon-bat-survey/>

*Kim J Melhuish – Winkleigh Biodiversity Group*

## **Paw Prints Pet Care**

Dog walking, Small pet sitting and Vet visits

Fully insured & D B S Checked

Hatherleigh based but covering Okehampton & surrounding areas.

Email : [Pawprintspetcare2016@gmail.com](mailto:Pawprintspetcare2016@gmail.com)

Facebook : Paw prints pet care

call Kirstie Rockett on 07392072463

## ***From our Devon County Councillor .....***



It is a pleasure to be writing for Distinctly Winkleigh again after what has been a very 'distinct' summer. When I last wrote for Distinctly Winkleigh it was in the aftermath of snowstorms! This time it is the opposite extreme weather wise!

If there is one positive about this weather for me as a County Councillor, it is that I have had far less complaints about potholes and blocked drains than usual!

Nonetheless despite that, **roads and highways have remained high on my agenda** and I would like readers to know about a major road closure coming up in September. Unfortunately **the A3124 will be closed between RHS Rosemoor Gardens and Beaford**. At the time of writing the proposed dates for the closure are from **10<sup>th</sup> September** until the **30<sup>th</sup> November**.

For readers travelling towards Torrington the diversion route for light vehicles will be along the B3217 from Dolton Beacon to Atherington and then along the B3227 to Torrington. HGVs will be diverted via the A386.

**The reason for this closure is that there is a length of embankment along the road to the east of Rosemoor Gardens that is showing signs of deterioration and has caused cracking in the carriageway.** The section where the road is cracking also has no support in the form of a retaining wall. The closure is proposed so that the County Council can build a new retaining wall to strengthen the integrity of the carriageway.

I should add that this is not the section that was resurfaced earlier this year! Nonetheless these works are essential otherwise we will end up having a serious risk of a complete structural failure of the carriageway.

During the closure the emergency services will be allowed access should the need arise. RHS Rosemoor will also be open throughout the closure – access will be from the Torrington side of the A3124.

I absolutely appreciate that news of this closure is not at all welcome, or convenient, to put it mildly. I have sought to minimise the impact of this closure as much as possible and as soon as it is practically possible, the council will re-open the road and replace the road closure with traffic lights. So the road *may* be reopened before the 30<sup>th</sup> November. I will endeavour to keep everyone up to date on the situation as much as possible.


On the subject of Highways, I was pleased to be able to organise a **meeting between Winkleigh's Neighbourhood Plan Group and DCC's Senior Traffic Officer at County Hall** to discuss the Group's road and traffic proposals. I hope that by involving Highways in this process we can find some long-lasting solutions to traffic issues in the village.

Finally, readers may be interested to know that I have been working on two task groups at County Hall, one looking at the performance of our highways contractor and the second looking at how Highways performed during the severe winter weather. These groups will continue working throughout the autumn so **I would welcome any resident's feedback** on either topic which I can take back to the Task Groups.

As ever, if there are any County Council issues that you would like me to help on please do not hesitate to contact me.

You can ring me on 07886 446560 or email [andrew.saywell@devon.gov.uk](mailto:andrew.saywell@devon.gov.uk).

*DCC Cllr Andrew Saywell*



**Open Book** Construction & Developments Ltd

General Building Works  
Period & Listed Building Renovations  
Maintenance & Repairs

For a free, no obligation estimate, please call:

**01837 83890 • 07541 002017**

**info@obcd.co.uk    www.obcd.co.uk**

## **Winkleigh's New Vicar**

Winkleigh's new Vicar, the **Reverend Helen King**, will be licensed by the Bishop of Exeter in **Winkleigh Church on Monday 8<sup>th</sup> October at 7 pm**. This will be followed by a **Bring and Share supper in the Village Hall**. **Everybody is warmly invited to this event.**

Helen has written the following short introduction:

"I'm really looking forward to coming to be **Priest-in-charge of Winkleigh, Ashreigney, Broadwoodkelly and Brushford** and getting to know everyone. So I thought you ought to know a little bit about me!

I grew up in Hertfordshire and did my first degree in Veterinary Nursing, spending 8½ years in veterinary practice before going on to Theological College. I was lucky enough to enjoy three amazing years at Ripon College, Cuddesdon studying for a BA in Theology from Oxford and getting to spend some time at theological college in South Africa.

"For the last three years I have been Assistant Curate in the Aldenham, Radlett and Shenley Team, a three parish, four church benefice, diverse in its context and liturgical styles which has given me a broad range of experiences.

"I'm engaged to Alastair, who is a Chaplain in the Royal Navy and home isn't complete without Gus, a rather shy rescue dog who enjoys lazing about and digging holes. Long walks, travelling, baking and anything craft related fills my spare time."

## **1918 - ARMISTICE CENTENARY -2018**

***A hundred years since the end of the 'War to end all wars'.***

This year **Remembrance Sunday falls on the 11<sup>th</sup> November** and in Winkleigh we commemorate the sacrifice made by the men and women who gave their lives for our future with two services:

**On Saturday 10<sup>th</sup> November at 11 am there will be a short service at the RAF memorial on the airfield.**

**On Sunday 11<sup>th</sup> November the church service with two minutes silence will be held at 3 pm.**

**Please come and support this great British tradition and give thanks for our freedom.**

*Sylvia Smith*

## Latest News from Britannia Sailing Trust - August 2018

Well I guess the best news from us this time is that the **“Big Shed” which houses our lovely old boat, is now complete!** I think it probably is the biggest man-shed in Devon, and in the words of one of our supporters, - “Now that is a shed and a half! And inside is what should be in every man-shed – a boat to restore! Very best of luck with your work. You have the people that have the skills.”

So, the shed is all but finished, - as we speak the electrics are being installed by one of our wonderful volunteers and everything should be completed by the middle of August, which means that work can start in earnest on Britannia herself. It has been a long five years since September 2013 when we first saw her in Brixham harbour and made up our minds then to rescue her, to getting her here to Winkleigh and making the facilities which will ensure that work can be carried on throughout the seasons, in a safe, sheltered environment.



On Saturday 21 July, 18 people turned up to help us to “raise the roof” on Britannia’s shed. Fortunately, the weather was calm and still as we had a very large tarpaulin weighing about 165kgs to be hauled up and secured. Sam’s system worked like clockwork, even to the use of a “pole” that he had asked one of our trustees to make, just in case, - and it turned out to be necessary to ease the tarp over the front

end of the shed. It was a wonderful experience to have so many helpers, some old friends and some new ones, so many thanks to everyone who supported us that day, and thank you to the Kings Arms who supplied us with Beer and sandwiches after the event.



Once the space is completed and made safe, we will hold an “Open Day” and invite people to come along and see what a group of “Oldies” in Devon are up to. **We are very keen to work with other local community groups as well, for example, the local History group and Art group, maybe Sea Scouts, or any community group that may be interested!** We have spoken to Chulmleigh Community College to see if



we can work with some of the technical students. Max, the 12 year old Grandson of one of our amazing volunteers, on being shown around the boat, said he was going to leave school and come and help to restore the boat as it would be really good science and better than at school! My sentiments exactly...

The other news is that **we are currently crowdfunding, hoping to raise £15,000 to buy materials for Britannia**. This will keep the project alive for at least another year, as there are no other expenses. All labour, skilled and otherwise, is voluntary, admin costs and overheads too are covered, so every penny we raise will be spent directly on

the boat. If you are interested, have a look at our page. It's worth it to have a laugh at Sam's silly hat.

Check it out on [www.crowdfunder.co.uk/britannia-sailing-trust](http://www.crowdfunder.co.uk/britannia-sailing-trust). The campaign is live until the beginning of September.

If you want to find out more about us, or have a few hours to spare, please give us a ring on 01837 682895, or email [vickisamuels@yahoo.co.uk](mailto:vickisamuels@yahoo.co.uk).

Our website is [www.britanniasailingtrust.org](http://www.britanniasailingtrust.org)

and our facebook page is facebook.com/Britanniasailingtrust.

**We would love to hear from you, particularly any community groups!** We are at Seckington Cross, behind Airfield Garage and Zukis Café – come along and say hello!

*Vicki Samuels (Chair Britannia Sailing Trust)*

## Groundwork



All aspects of digger works from ponds and foundations to large scale landscaping, drainage and sites.

Well established & fully insured with lots of experience in large and small projects.

Martin Parish 07817 464420 or [martin@pmfarm.co.uk](mailto:martin@pmfarm.co.uk)

## Winkleigh Fair

**Another summer is almost over – and what a scorcher it has been. Almost wall to wall sunshine** from mid-May to mid-August. We were indeed blessed with blue skies for the duration of Winkleigh Fair week, and **what a week it was.**

From the outset, the **Fair Committee wants to thank everyone hugely for the wonderful support given at each event** – despite England playing in the World Cup - and to have the week capped on Fair Saturday evening by a Square full of villagers with everyone singing and dancing to the live entertainment was a truly memorable occasion. Special thanks also go to Summer Jones whose lovely picture was selected for the front cover of the programme, and to John Short who, once again, risked life and limb in putting up the Fair bunting!

The week started on a massive high with members of the ever-popular, and now TV stars, **D-Day Darlings** and their male colleagues delivering a quite spectacular “**Hooray For Hollywood**” show in the Village Hall. The hall was full to bursting to the point where we had to stop taking bookings the previous week and create a reserve list. When did *that* last happen!? Just under 200 of you were lucky enough to enjoy some amazing performances with the cast receiving a well-deserved standing ovation at the end. Once again, because of the Darlings’ long-standing affinity with the Royal British Legion, £1 from each ticket was donated to the Poppy Appeal.



This was followed the next day by the traditional **Fair Clay Shoot**, organised this year by Ian Rule and Sian Thurlow and won this year by Chris Dart and the **Quiz Night**, which once more filled the Hall and we had a great evening.

Sunday brought **the official opening of the Fair** which this year was beautifully undertaken by John and Sue Short. This was a wonderful occasion – a quintessentially English village, warm sunshine, traditional entertainment and history all coming together with many villagers turning out to watch and enjoy. The Fair King and Queen, Ryan Mack and Jasmine Coles, were quite magnificent, with their beautiful “keepsake” silk flowers once again being provided by Joyce Brock. We were honoured to welcome Rural Dean, The Reverend Dr Susanna Metz,



who led a procession through the village streets for the **Fair Service at All Saints Church**.

It was a delight to have award-winning **Hatherleigh Silver Band** with us, who performed in The Square and marched with the procession. This was augmented by **Winkleigh Morris Dancers** who gave some splendid displays. I should mention here that the Dancers decided to forego their usual fees, donating them directly back to the Fair funds. This was a wonderful gesture. Rev. Metz, on the return from the Church, carried out the centuries old tradition of blessing the well. The Fair Committee would like to thank all of those involved in the Opening for making it such a special occasion. Thanks are also due to all of the local residents who kindly supported the event by removing vehicles beforehand and for enduring the road closures on this, and other, days of the week.



The **Teddy Bear's picnic** took place following the Opening at the Sports Centre when a large number of children attended with their "bring 'n' share" picnic. I was fortunate to be asked to read a story to them "We're Going on a Bear Hunt" which I thoroughly enjoyed and which allowed me to introduce my own, 63 years old, teddy bear to the children!

The next two days saw a breath-taking performance of the **Jubilate Choir organised by Winkleigh Methodist Chapel at the Village Hall**, with all profits being donated to good causes, and delightful showings of **"Arts and Crafts of Winkleigh"** and **floral arrangements by All Saints Church Flower Ladies in the Church**.

The **Vintage Car evening** this year was always going to be an unknown quantity as England were playing that evening in the knock-out stages of the World Cup. It turned out to be another very popular and busy event so thank you to all who brought their beloved vehicles along and also to the sponsors, The Mad Butcher of Winkleigh, Mid-Devon Motors and Tesco. Honestly, in my 60-odd years thus far on this planet I have never tasted burgers as good as Barry's!

Friday and Saturday saw the running of the **Children's Art Competition and Adult Art/Photography Exhibition** at the Community Centre. This was organised by Winkleigh Society with a great deal of time and hard work expended so thank you to the Society, in particular Penny Griffiths and Alan Jacobs. Full details, including the competition results, can be found elsewhere in the DW.

**Fair Saturday** arrived. It had always been the intention that we would provide more traditional village fair entertainment which we did with market stalls, coconut shy, tug o' war and children's games alongside a Bucking Bronco machine, the Bug Man,

and the exquisitely sweet alpacas. Everyone thoroughly enjoyed the day but this is work in progress with much more planned for 2019.

The highlight of the day was always going to be the live entertainment that evening, the **Abba tribute band**, including our very own Tim Rhodes, “**Take a Chance on Us**”. What an evening it turned out to be. Fabulous band, wonderful weather, a full Square – who could ask for more!? Winkleigh rocked that night. So, how do we follow that next year?? Big thanks go to Tony Bayley for sponsoring the band this year on behalf of Winkleigh and North Tawton Post Offices. Also to Lorne Hamilton and Winkleigh Timber for providing and sponsoring the stage, lights and sound.



And so a great week drew to a close.

Some wonderful moments, some food for thought for the future and also a few lessons learned. Again, massive thanks are due to everyone who, in however small or large a way, helped

in the sponsorship, planning, preparation, delivery and clearing up of the 2018 Fair.

Thoughts now turn to the Autumn, to arranging more fund-raising events and, of course, to Christmas. We will be working hard towards providing another Yuletide event to be remembered. Amongst plans are moves towards booking the D-Day Darlings lead, Katie Ashby, together with three of her male colleagues in a **Christmas concert “Three Beaus and a Belle”**. **23<sup>rd</sup> November is pencilled in** for this but I hope to have this confirmed by the time this drops through your letterboxes. We are also looking at, perhaps, a family movie evening in the Hall, maybe a Bingo evening and of course the usual Christmas Quiz Night. **Please remember how important it is that you support these events because the funds raised will determine the levels to which we can go for the 2019 Fair.** We have no other funding – we are wholly reliant upon you and our sponsors. In particular, we are looking specifically for sponsorship for the Christmas Tree in The Square – generously provided by Read’s Roofing last year - and also for Santa’s Grotto. Give Tony and Kay a call on 01837 83248 or email us at [tonyaston1953@gmail.com](mailto:tonyaston1953@gmail.com) if you would like to help.

Enjoy the remainder of the summer and we hope to see many of you over the coming weeks and months.

*Tony Aston, Treasurer, Winkleigh Fair*

## Life on the Verge - Biosphere

Our roadside verges in Winkleigh and Hollocombe are a valuable wildlife resource. They provide a range of habitats and are increasingly important wildlife corridors for threatened species and pollinators. They also provide opportunities for us to see wild flowers on a daily basis and if managed well can be attractive and beneficial to all.

Local authorities seeking to reduce costs are now restricting the areas which they cut, and you may have seen verges around Winkleigh that are in need of a little attention. In order to balance the competing priorities of tidiness versus protection of wild flowers, it is advisable to establish an annual cutting (and/or raking) programme. The **Life on The Verge Project** (see advert overleaf) is looking for local people in Winkleigh to adopt a verge near them. You do not need to know the names of the flowers, as you can receive help in identifying them and you will be offered advice on when is the best time to mow the grass to protect the wild flowers there. Perhaps you already mow a verge near your home, or it is something you would like to do, so why not contact Penny Griffiths (01837 83407) or the Co-ordinator ([verges@tarkacountrytrust.org.uk](mailto:verges@tarkacountrytrust.org.uk)) and **get some advice**. **Future generations in Winkleigh** will benefit from your efforts, if these precious plants are not lost forever.

Kim Melhuish



### *Changes hair & Beauty Salon*

*Beauty salon offers:*

*Ear piercing*

*Manicures—mini and full manicures*

*Gel manicures, beautiful nails for up to 15 days*

*Pedicures—Soak, and pamper*

*Waxing— brow tidy, lip, chin, under arm, bikini and leg waxing*

*Brow and lash tinting, lash perming*

*Spray tanning*

*Facials*

*Telephone 01837 83004*

*Exeter Road, winkleigh*



## **Adopt your local road verge!** **Volunteers wanted!**


- Individuals & community groups
- Actively conserve native wildlife
- Learn new skills & meet new people
- FREE road safety, botany & verge management training
- FREE equipment & support



### **More info**

Sign up for our eNews at  
[www.tarkacountrytrust.org.uk](http://www.tarkacountrytrust.org.uk)

### **Contact us**

 LifeOnTheVergeBiosphere

tel: 07855 660319

email: [verges@tarkacountrytrust.org.uk](mailto:verges@tarkacountrytrust.org.uk)

with thanks to our FUNDERS



## Seven Stars for the Seven Stars

### ☆1. **About the pub, then and now**

We understand that the Seven Stars has quite a mixed history and was one of five original public houses in Winkleigh. The original building is 17<sup>th</sup> Century and according to the online Jackie Freeman (2008) 'History of Winkleigh Devon' article, its first recorded use as an alehouse was in 1822 when Richard Inch of the cider-making family was landlord. It reverted to a house in the late 1870s, later a Licensed Grocer's shop, but by the 1900s it was back to being a pub again.

In the 1950s the roof caught fire and was rebuilt and the whole building renovated to the layout as it is now. Readers can see the 'before' picture in the pub, on the far right as you go in the front door. The pub has recently been repainted and redecorated and has a wonderful mixture of quaintness and modernity, keeping tradition but providing an up to date ambience.

**Distinctly Winkleigh (DW):** *When did you come to Winkleigh, what attracted you to the Seven Stars, and what variety of drinks do you provide nowadays?*

**Karen and Mark (K&M):** We came to Winkleigh 9½ years ago attracted by the Village welcome and atmosphere and to the Seven Stars (**watch out for our 10<sup>th</sup> Anniversary Party on 18<sup>th</sup> December!**) because of the layout and feeling of the pub and its potential. It's the Village that motivates us to provide an essential community haven.

Fairs and events used to spread further through the village than they do now, with stalls all the way up to and including High Street which integrated the Seven Stars into the heart of things. As the ancient Charter granted by Henry III in 1262 for a weekly Market and three Annual Fairs probably still stands, it is a pity not to use it. We would welcome a return to the integration of the High Street and the Seven Stars back into the centre of the footfall of activities, especially as the Seven Stars is a willing sponsor.

We still carry the entire Sam's Cider range with every variety in bottles, plus three Real Ales (always including Otter) on draught, with Nitro Keg Bass also in attendance. For the lager drinkers we have four Lagers of varying strengths and lastly Guinness, cold and extra cold, all on draught. In addition we have a wide range of wines and spirits, a large variety of shots and modern drinks and a range of cheeky cocktails.

### ☆2. **Clientele**

**DW:** *You've built up quite a following of customers over the years, what are the age groups that you mainly see?*

**K&M:** We actually see a total mixture of age groups. It's a regular occurrence that 18-year olds will be in here playing pool and drinking



with 80-year olds! We are child-friendly and dog-friendly and as we open from 11 am until late each day, we get an ongoing mixture of all age groups and family groups. We have Mums with children often enjoying the garden, single folk, including single ladies who feel safe and welcome with our friendly bar staff and are happy to come in on their own and chat, or to meet friends and relax, teens with parents, youngsters, sports teams and retired folk. Also, we are frequented regularly by all those we sponsor, such as two Darts Teams and charity events, as well as sports teams.

### ☆3. Sports Bar

**DW:** *You are very much a Sports-oriented Public House and support many Sports events and activities. You have 3 TVs with Ultimate Sky Sports Package and BT Sports, so you can cover all the Racing and Sports and Racing News. You provide Darts, Pool and Skittles and have entertained seven visiting Darts Celebrities over the Years. Please tell us more about the celebrities, your sporting support for the village and the events that are currently sponsored by the Seven Stars?*

**K&M:** In addition to the two darts teams mentioned above, we also sponsor two Pool Teams, three Skittles teams (two Men's and one Ladies), one Football Team and various Shooting Clubs, not forgetting bacon rolls for our Horseracing Guys!!



The seven Darts Champion Stars who have visited us over the years are Keith Deller, Bobby George, Bob Anderson, John Lowe, Wolfie Adams, Eric Bristow and Dennis Priestly! We are looking forward to planning more sporting celebrity visits - Steve Davis would be nice! Watch this space - keep an eye out on our Facebook Page for all our events!!

### ☆4. Buffets

**DW:** *People know you provide a drinking Sports Bar, but what everyone may not realise is that you provide buffets and event catering too. Please let our readers know more about this feature of the Seven Stars and what you can offer?*

**K:** I'm a qualified cook and have been in the hospitality trade for more years than I care to mention (!) and therefore have a wealth of catering experience. I started at the age of just 14 making food for the darts teams in the local pub where my father worked. I can supply buffets for small or larger events to suit a variety of budgets, just ask! I have recently provided a wedding buffet for one of our staff and am always open to anyone wishing to discuss catering possibilities for their event. Please drop in, or email me on



[the7stars@btinternet.com](mailto:the7stars@btinternet.com), or telephone on 01837 83344, or even drop me a Facebook message.

#### ☆5. Garden

**DW:** *One of the great benefits of the Seven Stars is the lovely Mediterranean-style enclosed outside Garden. This works very well with the covered outdoor smoking area not impinging on other users of the garden who are non-smokers. What was your inspiration for this garden theme?*

**K:** *We lived in Spain for six years, and we wanted to provide a holiday atmosphere in the centre of Winkleigh village! We held a great Beach Theme Night in the Garden!*

**M:** *It's an on-going project, we've recently bought new furniture for the garden and now we want to decorate and refurbish the passageway, toilets and Skittle Alley, which often doubles up as a meeting room and a private event area.*

#### ☆6. Theme Nights

**DW:** *You and your staff enjoy regularly providing Theme Nights for your customers. Can you tell us more about these and any you have currently planned?*

**K&M:** *As this edition of Distinctly Winkleigh goes to print, we are planning our **Tropical Night on 25<sup>th</sup> August**, which we are really looking forward to, with free snacks and a choice of inexpensive cocktails to purchase - we will encourage people to bring their towels and perhaps try out limbo dancing! We also hold Casino Nights for fund-raising events, but the next major Theme Night will be our **Halloween Night on 27<sup>th</sup> November** where we really go to town on decoration and costume as do many of our customers! Expect fun side-lines such as Apple-Bobbing and some weird and wonderful cocktails!*

#### ☆7. Live Music

**DW:** *There have been some great bands and musicians playing at the Seven Stars over the years. What people may not realise is that admission is Free of Charge. Please tell our readers more about the monthly live-music bookings and who is booked over the next few months?*

**K&M:** *We hold regular monthly Live Music Evenings and also Discos for some of our major events during the year. Coming up we have the **Bon Jovi Tribute on 8<sup>th</sup> September**, **The Dockneys on the 13<sup>th</sup> October**, **Shovelhead on 24<sup>th</sup> November**, **Fireblockers on 1<sup>st</sup> December** and now **Bicycle Repairman** (who went down very well at Winkleigh Fair) **on 22<sup>nd</sup> December**. All to suit a variety of styles and tastes! And this year as a first for us, you can **Dance in the New Year to the Abstract Dragon Disco on 31<sup>st</sup> December!***

*Readers please note that sometimes events have to be changed due to circumstances beyond our control. Please check all our updates; any changes will be on our Facebook Page so please 'Follow' us! **We look forward to seeing you at any of our events, or on any day of the week in the Bar or Garden from 11 am.***

## The Sports Centre & WWMRFF (Winkleigh War Memorial Recreational Field Fund)

The glorious summer weather has engendered a feeling of optimism in the village and at the Sports Centre in particular. Not that easy for farmers and gardeners, but in our beautiful part of Devon outdoor activity helps to promote a healthy life style and our overall wellbeing.

With lots of water to drink and with suitable protection from the sun it has been good to see, for example, the **outdoor play area** in constant use. Thank you to those parents who have made suggestions about how this area can be further improved following its recent refurbishment. Work is continuing on the outside toilet block and we hope to have it back in use before long.

We also greatly enjoyed the **“pub” cricket match** that was recently held at the Sports Centre, so did all the spectators and supporters. Let's hope that this much loved event is firmly fixed on the calendar for years to come. The Football Club hosted the event with catering organised by the Knight family and the bar provided by the Kings Arms. An impressive amount was raised for charity (Devon Air Ambulance) and a good time was had by all. There can only be one winner and this year it was the turn of the Kings.

The **Football Club** is looking forward to next season and there has been a lot of work taking place to improve the pitch and Clubhouse.

In addition a **major fund raising initiative is about to be launched in the form of a “50” club**. It is hoped that this can be extended to a “100” club in the future. See Tony in the Post Office for more information.



**Jacquie Kenny** MAR, MFPR

**Precision Reflexologist, Reiki Practitioner & Animal Healer**

For help with a wide variety of physical maladies  
and stress-related problems please contact me on 01837 851793,  
or visit [www.jkreflexandreiki.co.uk](http://www.jkreflexandreiki.co.uk) for more information.

The committee would also like to thank the **Snooker Club** for its continued progress and the contribution that it makes to life at the Sports Centre. This is a thriving club bringing many people into the Centre as it goes from strength to strength. The Aunt Sally team is looking forward to the challenge set by the all-conquering Seven Stars Skittles team. We will let you know how this plays out as each team tries out their abilities in each activity.

A big thank you also to some of the **allotment users** who used their expertise to guide some willing volunteers when tidying up flower beds adjacent to the old bowling green. This area is gradually being improved and we are always interested to hear from anyone interested in using it in the future.

It was good to see some use made of our facilities for **Winkleigh Fair** as once more this was a successful event for the village.

While it is not good to end on a sour note we must say how disappointed we all are at the Centre about the **level of needless vandalism that regularly takes place here**. Doing something about it is very difficult but we are very grateful for the vigilance shown by our closest neighbours at the Cemetery Bungalow who always have our best interests at heart. If **anyone does notice anything please contact the police** as at least then they have a better idea about the difficulties that such an isolated facility faces.

**Thank you** for the support that you give to the Sports Centre. Please feel free to contact us if you have ideas to share, needs to be met or if you just want to find out about Aunt Sally!

*Tom Radcliffe (Secretary & Trustee)*



# TEN ACRES VINEYARD

*Wine shop & camping open 1<sup>st</sup> May- 30<sup>th</sup> Sept*

 10am-8pm Closed Wed. 

At weekends, free tastings and wine for sale by the glass.

[www.tenacresvineyardcamping.co.uk](http://www.tenacresvineyardcamping.co.uk) or (01837) 83892

## Winkleigh Church Flower Ladies



The theme for 'Winkleigh Fair' floral displays was 'Winkleigh Arts & Crafts'. The displays depicted Thatching, Hairdressing, History of Butchery, Bell Ringing, Cider Making, Water Divining and Mixed Crafts. Our coffee and cake morning held on Tuesday 10<sup>th</sup> July was very well attended with some new faces visiting. Jennie Gill very kindly played her keyboard for us during the morning, for which we are very grateful. Many compliments on her music were received.

The local Beavers group did a lovely display in the entrance porch, which included photographs and their present uniform. Our very grateful thanks to them.



We also opened the church during the evening of Wednesday 11th July to coincide with the vintage vehicles evening. Many visitors came along to view the floral arrangements and enjoy light refreshments on offer during the evening.



Thank you to all who supported us on both days. The funds raised from both events will go towards our flower fund.

*Linda Millership*



## The Music Room – A Review



Since we settled in Winkleigh in 2015, we have attended and enjoyed many musical evenings at 'The Music Room', arranged by Hollocombe Music Club. Each event has featured a number of performances comprising soloists or groups, all of whom usually hail from Devon, Somerset or Cornwall. The standard is generally very high and the music offered is very varied, ranging from folk to jazz to blues, etc., so there is always something to suit most tastes.

Venues have ranged from Winkleigh Community Centre, to the Sports Centre, or even Four Seasons, but this year several have been held at the Waie Inn in Zeal Monachorum, where food can be ordered and brought to your table while you listen to the music. Although entry is free, a donation of at least £6 per person is expected as a contribution to the costs of hiring the acts and booking the venues.

Each time we have gone along there has always been an informal and welcoming atmosphere and usually a good crowd.

News of future events can be found on the notice board at the Bakery Stores, online at <http://hollocombemusicclub.org.uk/themusicroom/> where you can also sign up to their email mailing list, or in Distinctly Winkleigh.

*Godfrey & Jo Rhodes*



### **We don't Just Do Weddings!**

The Ashridge Great Barn offers a large flexible space with inbuilt facilities in stunning surroundings.  
[www.ashridge-court.co.uk](http://www.ashridge-court.co.uk)  
@ashridgecourtfarm 01837 352025



## **DH Garden Services**

Garden Maintenance &  
Tidy Ups  
Mowing, & Strimming  
Hedge Cutting  
Shrub & Tree Pruning  
Lawn Care  
Local Business  
Fully Insured

[www.dhgardenservices.co.uk](http://www.dhgardenservices.co.uk)

Tel: 07481 864686



## WINKLEIGH PARISH COUNCIL

### Grants and Donations Process 2018-19

Winkleigh Parish Council sets aside a sum of money each year to donate to good causes in the parish as either a grant or a donation. The sum allocated by the Parish is part of the annual precept the Parish Council collects from the electorate and is available for distribution from 1 April each year.

The Parish Council is governed by rules set out in the Local Government Act 1972 (section 137) which states the money must be spent on **purposes for the direct benefit of the parish and be commensurate with the expenditure incurred**, for example, spending a large amount for the benefit of only one or two people is not acceptable.

Grant application packs can be obtained from the Parish Clerk, **closing date for all applications is 17<sup>th</sup> September 2018.**

All successful applicants will be notified in November 2018 with payment being made from April 2019.

*Winkleigh Parish Council, Melanie Bickell, Parish Clerk, Lower Itton, Spreyton EX17 5BB 01837 89095, [winkleighpc1@btconnect.com](mailto:winkleighpc1@btconnect.com), [winkleighpc.org.uk](http://winkleighpc.org.uk)*

# Adam of Eden

## Tree Care



A Friendly, family run company aiming to provide a range of high quality arboricultural services to our customers trees.

Services include:

- Tree Removals / Dismantles
- Tree pruning, reductions, thinning, shaping and dead wood removal
- Hedge trimming
- Stump grinding
- Tree planting

All work is insured to £5million, complies with relevant British standards and is carried out by appropriately trained and equipped professional arborists

**CALL NOW** for friendly, professional advice and to arrange a **Free no obligation quote**

TEL: 07398268877

Email: [adamofedentrees@gmail.com](mailto:adamofedentrees@gmail.com)

Check us out on facebook and instagram: [@adamofedentrees](https://www.facebook.com/adamofedentrees)



## Beaver Scouts

Wow we are a full house and have 21 beaver scouts and this summer we have spent our time outside. Scouts Association says that we have to spend 50% of our time outside so come summer we make up the time, as winter is spent in the hall. We had our first district sleepover at North Tawton Rugby Club, where 122 beavers [in temperatures of 30 degrees] had a great time under canvas.



We try to make the time the beavers come to us an adventure and full of fun and in doing so they gain badges. The number of badges are growing and the choice is varied, from healthy eating to navigation and this year they brought in 3 new badges and one of those was snow sports, which was gained by 3 beavers!!

The leadership has been made up of Christina [Bubbles], Vanessa [Tic Tac], Ashleigh [Rainbow], and myself [Ahmeek], but this summer we are losing Ashleigh, our young leader as she goes off to college; we will really miss her and so will the beavers. I want to thank her for all the time she has given up and her input will be missed.

At Christmas I also will be leaving, I do not want to but I am afraid old age is calling time. Will I miss them, of course I will, but someone who can get off the floor quickly, when playing games is needed! **Please I do not want the group to fold, as it is in a great place at this moment in time, so we need your help. Can you give up a couple of hours a week to make sure this group carries on, if so give me a ring on 01837 83487.**

I would like to thank the people who have contributed to our meetings, mums, dads and family who have travelled all summer taking beavers to different venues, to the fantastic leaders [Vanessa, Christina and Ashleigh] who have given up their time, energy and support to me. A big thank you to the Church Wives for their donation, it helped pay for our fencing evening. Also to my hubby who said he would only help occasionally but seems to be helping us on a regular basis, a hearty thank you, but most of all a great big thank you to the beavers whose joy and thanks make all the hard work worthwhile.

*Pat Cunningham, Beaver Scout Leader, 1st Dolton & Winkleigh Scout Group.*



## ACE Archaeology Club

I am writing this at the beginning of August and the weather is still very dry but a little cooler, at least for a while. We have finished our Moistown dig for this year, apart from covering the trenches in a weed supressing membrane. At least we don't have to backfill the trenches anymore as that would take us days to un-backfill next year.

We changed our dates for digging this year and did one session of three and a half weeks instead of two sessions of one week and two weeks. The idea was to avoid having to set up all our tents and digging gear twice a year. However this year those three and half weeks were very, very long ones as we were digging in very hot weather. I think we registered 38 degrees in the finds tent at one stage and it was regularly over 30 degrees. We do have gazebos that we can put over the diggers to give them some shade but have to move them regularly of course.

We were short of diggers this year, mostly due to it being too hot for some to dig at all and the need for others to have more rest days. However we still got a surprising amount done. We lengthened out Trench 4 into the pit behind the house to see if we could work out what the pit was for. Needless to say we haven't so far. However we did find this almost complete cloam oven door.



And we finished digging the outhouse at the other end of the site. We are still not quite sure of the purpose of this fire pit but it could well have been used as the fire for a boiler.



### ALL SHINES WINDOW & EXTERIOR CLEANING

- WINDOWS
- GUTTERS, SOFFITS, FASCIAS
- SOLAR PANELS
- HOUSE WASH (SOFT METHOD)
- CONSERVATORIES
- ROOF DE-MOSS
- PATIOS, BRICK, PAVING, DRIVE-WAY



Tel: 01805 938502 - Mob: 07711079577

This year **ACE celebrated its 21st Birthday with a party at Pattiland**, the farm on which Moistown sits. We had an archaeologically-themed cake competition, and below are the ones that came 1<sup>st</sup>, 2<sup>nd</sup> and 3<sup>rd</sup>. In case you were wondering, the one that looks like a chamber pot is based on the remains of a chamber pot found in this year's dig, Sorry!!



<https://acearchaeologyclub.wordpress.com/>

*Jenny Rock*

**Rock Solid Book-keeping Solutions**  
*Creating order from Chaos!*

Collacott Lodge,  
Winkleigh,  
Devon EX19 8LE

Mobile: 07743 683 756

Email: [rocksolidbookkeeping18@gmail.com](mailto:rocksolidbookkeeping18@gmail.com)

Book-keeping, Bank reconciliations, Creditor & Debtor Reports.  
VAT Returns, Accounts to Trial Balance, Liaise with Accountants.

Temporary, 'One-Off' and Permanent Contracts undertaken.

Friendly, helpful advice for small businesses.

Accounting experience in:

Farming, Manufacturing, Pub, Convenience Store and Retirement Homes

CIMA Advanced Diploma in Management Accounting.

Association of Accounting Technicians NVQ IV.

## Ashreigney WI - Autumn Programme

Meetings are on the first Tuesday of the month at 7.15 in Ashreigney Village Hall.

**September 4<sup>th</sup>:** Talk by Peter Lines on his life in Diplomatic Security (visitors welcome). COMPETITION: Flower of the month and '*Up-cycle an Item*'.

**October 2<sup>nd</sup>:** Presentation by Raymond and Claire Tricker on their Trip last spring to New Orleans for the Mardi Gras. There will also be a display of items from their trip (visitors welcome). COMPETITION: Flower of the month and '*Potatoes grown from a special variety*'.

**November 6<sup>th</sup>:** Members Night, the Committee take a rest and a group of WI members are in charge! COMPETITION: Flower of the month and '*A Carnival/Mardi Gras Headdress*'.

**December 4<sup>th</sup>:** Christmas flowers with Angela Parker (visitors welcome). COMPETITION: Flower of the month plus '*Flowers arranged in a Cup and Saucer*'

That completes Ashreigney's Autumn Programme for 2018. This is a nice friendly Group and everyone is **always** made very welcome

*Claire Tricker*

### SAMARITANS

#### VOLUNTEERS NEEDED

Could you be there for someone  
suffering emotional distress or despair  
and who has no one else to talk to?  
Volunteering with Samaritans can help

make a difference to other people's  
lives;

It can also make a difference  
to your own life.

**Next selection date 22<sup>nd</sup> September 18**

**To register contact 01271 37 43 43**

**Email: [sams\\_nd@yahoo.co.uk](mailto:sams_nd@yahoo.co.uk)**

**2 Summerland St, Barnstaple EX32 8JJ**

REAL PEOPLE - REAL LIVES - REAL DIFFERENCE

### Autumn Tennis - Chulmleigh

Chulmleigh Tennis Club has coaching for all from **Monday 10 September**.

Alex White is continuing his Monday after-school session for Academy students. On **Tuesday 11 September** he is starting a new session for mini beginners at 3.45 pm and for mini improvers at 5 pm.

On **Wednesday 12 September**, John Griffiths, our performance coach, starts sessions for mini players, families, rusty rackets and adults.

For more details contact the club on [chulmleightennissclub@hotmail.co.uk](mailto:chulmleightennissclub@hotmail.co.uk), [tennis@alexjwhite.com](mailto:tennis@alexjwhite.com) or phone 01769 580819 or 07510354858.

## What's Going On At Winkleigh Methodist Church?

Thank you to everyone who came along and supported our Monday evening Winkleigh Fair Concert which was held in the village hall. The **Jubilate Choir** from North Devon gave us a wonderful programme which included a variety of music and singing. The chairperson, and his sense of humour, kept us all entertained. We appreciate the time given by the choir in both practising and driving out to Winkleigh to perform. We are very grateful for the donations given, which totalled **£257.60** and will be split between **Pancreatic Cancer UK** and **The Farming Community Network**.



At the beginning of the summer holiday our **Circuit Youth Team, Infusion**, led a week of holiday clubs at various venues throughout our West Devon Circuit. Winkleigh had a full house with 56 children attending - you may have seen some of them out and about in the village. It was an amazing day of Wild West fun, exploring Moses, his journey through Egypt and the trust he put in God. The week concluded with a picnic in the park at Okehampton with 80 children attending! A big 'thank you' to the Infusion team and everyone who helped.



On the first Sunday in August our Church made the most of the beautiful weather and shared a picnic together in the garden of one of our member's parents. We thank them for their generosity in providing a great location and also a very tasty cream tea!

We are hoping for more lovely weather for our **Church on the Beach on 9<sup>th</sup> September** – more detail will follow and the location will be decided depending on the weather forecast.

### Recharge

**Next one - 6.30 pm on Sunday, 2<sup>nd</sup> September**

**Food, drink, chill time, worship and games  
at Winkleigh Methodist**

**Harvest celebrations** are not far away. We will be celebrating on 7<sup>th</sup> October so please see our notice board and Facebook page for more information nearer the time.



**Food Bank:** Donations for the food bank based at Okehampton can be dropped into the Methodist Church (open for Sunday services as listed below and also open on Mondays for Oasis from 11 am – 2 pm).

Our regular activities continue ....

**Sunday worship** begins at 11 am with coffee served from 10.40 am. Sunday School and SOW for teenagers run at the same time. The first Sunday of each month alternate between our informal café style bring and share tea service at 5.30 pm and **Recharge** – our new informal youth worship including food, drink and games which runs from 6.30 – 8.00 pm. Please see our Facebook page or notice board for dates and detail.

**SPACE Youth Club** has had a break throughout the summer but will begin again on **14 September**. It runs on the second and fourth Friday of every month: Years 5 & 6 from 7 to 8.15 pm and Year 7 upwards from 8.15 to 10 pm - £1 entry fee and a tuck shop available for anyone wanting to buy a snack.

**Oasis** continues to run on Mondays with a home-cooked two-course lunch (£7.50) being served at 12.30 pm (coffee, lighter lunches or cakes also available). All ages welcome – please pop in! Proceeds are used to support the charity Project Gateway and to fund trips for regular customers!

**A prayer meeting** is normally held once a month at varying venues. As mentioned below, please contact us with any prayer requests.

All worship times and preachers are on our notice board outside of the chapel along with any other special events. If you are on Facebook, you will be able to keep up to date with what's happening at **WINKLEIGH METHODIST CHAPEL** or **SPACE for Youth Club information**.

For more detail about church life or prayer requests please contact any of the people below, or any other church member, and we will be do our best to help you.

*Alan and Fiona Marshall 01837 83809 / Pam Down 01837 83674*

## Harvest Workers Co-op – Seed Day

On 17th March, Harvest Workers' Co-op hosted a "Seed Day" in Okehampton. It was a chance to swap seeds, learn about the process of seed saving, join in seed fun and generally celebrate seeds. The day's activities included a screening of the film ***Seed: the untold story***, focusing on the issue that 94% of our global seed diversity has disappeared, and a great majority of this in the last century and, as the film explains: **"our seeds are as endangered as the panda or the polar bear"**. Whilst the Seed Day was about celebrating, it was important to inform our community about this potential crisis that seeds (and us humans!) face. The film was a tool to begin seeding of change in our Devon community.

**Seeds are the foundations of life** - they provide us with food, clothes, medicine and materials. However our once rich and diverse catalogue of seeds, that has been created over 12,000 years of seed saving, has been winnowed down to a handful of mass-produced varieties in less than a century. Small-scale homesteads and family farms have given way to mechanised, mono-cultural agri-businesses to use genetically identical seeds that are produced and owned by global chemical and pharmaceutical corporations. These companies control more than two-thirds of the global seed market, reaping the profits of the seeds that the farmers sow. These seeds cannot be saved: if they are, farmers face ruthless prosecution. The large companies have taken the seeds that humans have used for thousands of years, and put a patent on them! Daylight robbery! **If we lose our seeds, we lose our food!**

This may seem like a mammoth obstacle, but there are small projects happening across the globe to help ensure we can keep our *Seed Sovereignty*. In our world there are about 20,000 species of edible plants, but humans are now generally subsisting on around 20. The film visits projects where there is huge potential to find *other* seeds that have the potential to feed people, such as ancient varieties of corn, passed down through the generations of America's first peoples. Closer to home (although not in the film!) in the UK, the Gaia Foundation are currently spearheading their Seed Sovereignty Programme, that is supporting projects that I am directly involved in: the South West Seed Savers Co-op. A group of growers who together are growing and sharing seeds, as well as collectively learning about the process of seed saving.

**What can you do?** If you would like more information, the film is available online ([www.seedthemovie.com](http://www.seedthemovie.com)), or I am happy to chat about seeds! For actions, supporting small and sustainable seed producers is a massive help! If you are a home gardener saving your own seeds, such as beans, lettuces, carrots is a good start as well as joining in on local seed swaps such as the Harvest Workers' Co-op in Okehampton.

The Harvest Workers Co-op has a whole series of educational and fun events. Please visit our website [www.harvestworkerscoop.org.uk](http://www.harvestworkerscoop.org.uk) for our full programme.

Olivia James

Down Farm, member of the Harvest Workers' Co-op

## Upcycling ... turning back the sands of time

There is absolutely nothing new about upcycling. It is a process that has been used on household furniture for hundreds of years. It has only been in the modern day that this trend has gone out of fashion with the advent of the throw-away culture.

Here in Winkleigh however, there is quite definitely a trend to hoard furniture in barns, lofts and outbuildings "just in case" followed by the mantra "it may come in useful sometime".

Last month I was approached by Fiona from Fiona's Farm Shop (who probably makes the best breakfast in Winkleigh) regarding a 1960s Three Piece Suite she had hoarded in her garden room come storage shed. It had been there for over 20 years and had become a habitat for many beetles, moths and other small lifeforms. However, in Fiona's opinion it was "Far too good to put on the bonfire!"

Fiona was right, this iconic shaped suite was a perfect upcycling project. It has taken a month to turn back the sands of time. It was stripped back to its wooden frame and completely reupholstered, keeping only the vinyl on the arms. A lot of work but we think the result was worth the effort. May it now go on for another 60 years.



*Lorie Randall MBA*

**Free estimates**  
**JIB Registered, Liability Insurance**

### **Local Electrician (Winkleigh)**

**17th Edition Qualified**  
**Many years experience**  
**All small jobs and faults undertaken**  
**Call Os: 07522420869**

**Or email:**  
**om-pat-testing@hotmail.com**

## Harvest Flower Festival - St James' Church, Bondleigh Friday 14<sup>th</sup> September to Sunday 16<sup>th</sup> September

A harvest-themed **country Flower Festival weekend** will take place in **Bondleigh Church** from Friday, 14<sup>th</sup> September at 2 pm concluding with the Harvest service at 3 pm on Sunday, 16<sup>th</sup> September.

On Saturday evening, 15th September, **Mariners Away**, a local folk band will play in the Church. Tickets which will include a glass of wine, cheese and nibbles are £8. Booking is essential. Please call Jane Semorad 01837 82319 or Caroline Stokes on 01837 82240 to book.

In addition to the **floral displays there will be refreshments and a Local Produce stall**. There is free car parking and admission to the Flower Festival is free but donations would be most welcome. To find Bondleigh Church follow the signs from A3124 Cadditon Cross, 2 miles south of Winkleigh; or Sat Nav: EX20 2AN.

The **harvest themed displays** will be loosely based on lines taken from Harvest hymns. A **competition for children** to make a harvest themed display will be held and these will be on show over the weekend. The **Flower Festival is in aid of Devon Historic Churches Trust**.

### Camper Van for Hire



Comfortable, well equipped, six berth 'Bessie'

Collect and return in Winkleigh; holiday in UK

Book securely through Camplify for full insurance and breakdown cover:

<https://app.camplify.co.uk/rv/motorhome-rental-winkleigh-bessie/982>

Or contact Tamsin on 07532 397313 for more information

Facebook: @BessiesAdventures

C1 license required (automatic entitlement if licence obtained before 1997)



**Twixtmoors**  
~upcyclers~

01837 83148

[www.twixtmoors.com](http://www.twixtmoors.com)

The Airfield, Winkleigh

Looking for that statement piece of furniture?  
Like the older styles but want something new  
and exciting?

Contact **Lorie** for your new  
County Cottage, Retro, Driftwood,  
Scandinavian, Shabby Chic and Bespoke  
Designer Upcycled Piece of Furniture

## A Timely Reflection on an Old Tradition

### ONCE UPON A TIME...

Morris was only performed by skilled professional dancers in the royal palaces and was sponsored by the church and the craft guilds in the cities.

### IT GOES BACK A LONG TIME...

Earliest written records date from the mid-fifteenth century, but its origins are much older.

### BUT TIMES CHANGE...

By the early eighteenth century Morris dancing was mainly confined to amateur performance by working men in rural communities, particularly in the Cotswolds, with many villages having their own teams, or 'sides'.

It almost died out at the end of the nineteenth century. Fortunately Cecil Sharp and Mary Neal noted down many dances and taught them to men and women.

Nevertheless, between the wars and until the early nineteen-seventies Morris dancing was almost exclusively a male tradition.

In the last forty years or so there has been a tremendous surge of interest in all forms of Morris dancing, with over seven hundred teams – male, female, and mixed in the UK.



**The ladies – Easter 1990**



**The men – Easter 1990**

### SPARE THE TIME

To find out more about the history of Morris dancing, come along to a free illustrated talk at Winkleigh Community Centre on **Tuesday, 25<sup>th</sup> September at 7 pm.**

## WINKLEIGH MORRIS TIME

Winkleigh Morris started in January 1990 with an evening class for men in the former Winkleigh Hotel, on the initiative of the then pub landlady, Sylvia Duffy. Shortly afterwards another class started up for the ladies. Both groups danced at Easter that year. In the early days there was even a children's group. The team became a single mixed group two years later.



**Revised kit (from 1998) – Exeter 2013**

In many ways Winkleigh Morris mirrored the traditional Cotswold sides in drawing virtually all its members from the village and its close neighbours, Hollocombe, in particular, and in developing its own style of dances.

Sadly, only a few current members still live nearby and none in Winkleigh itself. The side, however, is still very active, drawing support from a wider radius.

## TIME FOR REVIVAL & REJUVENATION?

**New support from potential dancers and musicians in Winkleigh would be most welcome. No previous experience of Morris is necessary.** Winkleigh Morris frequently run workshops for schools and youth groups. There will be a session especially for young people at the Community Centre, on **Tuesday 2<sup>nd</sup> October at 7.00 pm.**

## LEISURE TIME

Enjoy exercise in a friendly informal environment. Enjoy music making and socialising at minimal cost (£1 per week, towards hire of hall, but free taster sessions for new people!). Enjoy the opportunity to dance at many other villages in the area, and in other parts of the country – even abroad on some occasions.



**Latest kit (from 2013) Guernsey**

Come along to one of the Morris taster sessions at Winkleigh Community Centre, **8.00 pm Tuesday 25<sup>th</sup> September and 2<sup>nd</sup> October** – and bring a friend with you! Practices continue every Tuesday until the end of April but if you can't make every week, don't worry – you'll be welcome anyway!

For more information see [www.winkleighmorris.org.uk](http://www.winkleighmorris.org.uk)

*Colin Andrews*

## Brian Holland's Legacy

Brian died a few months ago. He fought many battles for the good of the village and its residents.

The most memorable was his dogged campaign to create a footpath from Elms Meadow over the bank to the pavement by the A3124 turning into Exeter Road.

When Elms Meadow was constructed the only route out of the estate was via the 60 mile an hour by-pass, the A3124, a long, dangerous and circuitous slog to the village, school or pre-school.



Brian (who worked for Sustrans for years) saw the injustice and danger of this and campaigned relentlessly and dramatically, as you can see in the adjacent newspaper photo by Ian Street in the North Devon Journal on 13<sup>th</sup> December 2007.

Claire Budd and Julie Robinson are also in this photo with their children and remember fondly how he conducted his lengthy campaign (involving our MP Geoffrey Cox). The impasse was over who should pay for it: Developers, Highways or the owners of the bank.

Brian penned many letters to Redrow and Devon County Council Highways. Finally he contacted local newspapers and, with several mothers and their children, staged a protest on the by-pass to highlight the dangers.

Eventually (after many months of campaigning) the footpath was finally constructed affording cyclists and pedestrians a much safer connection to the village.

In the photograph you can see Marshall, Betsy and Wesley Lill using the path. I also spoke to Gillian from Eggesford Road who uses both short cuts in Elms Meadows (the most recent being courtesy of Roger Hill) in order to avoid that first busy section of Exeter Road.



It has been suggested that the original footpath be named '**Brian's Way**' as a mark of appreciation for Brian's sustained campaign for pedestrians.

There is a precedent for this with Clifford's Way (the cut-through from Exeter Road to Southernhay and beyond). This was named after Clifford Short who campaigned doggedly (involving a public enquiry) to achieve this vital jigsaw of pedestrian connectivity in the village.

**Local heroes leave a legacy.**

*Penny Griffiths, July 2018.*

## Know Your Place

If you are interested in the physical history of any Devon location, a new website called Know Your Place is an ideal source of information. Go to website <http://maps.bristol.gov.uk/kyp/?edition=devon> and you find a split screen with a modern (2017) Main Map on the right and a 1904 Ordnance Survey Comparison map on the left. It is centred on Exeter.

Top Left is a Magnifying Glass symbol. Click on this and a dialogue frame pops up. If you enter Winkleigh (for example) in this frame, a number of possible locations will be shown below. In this case, click on Winkleigh, Devon, England and the overall map will centre itself on Winkleigh. Also top left are + and – symbols which allow one to zoom in or out.

The central vertical bar can be dragged to the left or right and you will notice the two maps line up exactly with each other. A double-click on the map will also zoom in.

On the right there is a panel showing Information Layers. Clicking on the tick boxes for Monument Points or Monument Polygons will cause Listed Monuments or Conservation Areas to be shown. Listed monuments are shown as black dots and Conservation Areas are shown in pink. Clicking on either a black dot or on a pink area will bring up an information panel and a further click on the > symbol in this panel will take you to another screen where a click on More Info will take you to the Heritage Gateway for more information. To return to the map close the Heritage Gateway screen then click on the v symbol.

Also on the right hand panel is a vertical slide bar. Moving this up or down causes the Comparison map on the left to fade into the modern map on the right. This is useful for identifying landscape changes. At the top of the right hand panel you can click on Basemaps in order to select which map is used for the Main and Comparison maps. To hide this panel click on the top right > symbol.

The oldest available Comparison Map is the 1846 Tithe Map, which is somewhat slower to load in.

For more information about the Know Your Place project go to  
[www.kypwest.org.uk](http://www.kypwest.org.uk)

## Local Author

Colin Andrews, foreman of Winkleigh Morris, is also a published author.

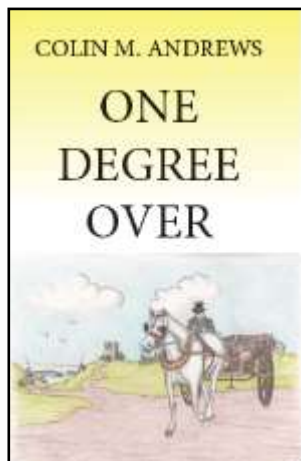
His latest novel, *One Degree Over*, is a sequel to the hilarious *A Matter of Degree*, set in the early seventies in a teacher training college.

Some comments on the latter include 'A Last of the Summer's Wine for students in the 1970s', 'If you enjoy James Herriott & Gervaise Phinn, you'll like it'.

He has also written a dramatic novel, *Shattered Pretensions*, which is largely based on a project in which he was involved while teaching at Chulmleigh Community College in the 1980s.

All books are available from the author.

See website (PayPal enabled) at [www.colinandrewsauthor.co.uk](http://www.colinandrewsauthor.co.uk)



# Marshalls

## ELECTRICAL CONTRACTORS LTD

WINKLEIGH & MORETONHAMPSTEAD

CALL US ON 07970705471 or Find us on Facebook

**'Working to keep you connected'**

<p>○ INDUSTRIAL</p> <ul style="list-style-type: none"> <li>○ New Builds / Extensions / Refurbishments</li> <li>○ Security Lighting / Emergency Lighting</li> <li>○ NICEIC Inspection &amp; Testing</li> <li>○ Full Design Service</li> <li>○ Low Energy LED Lighting</li> <li>○ Freeview TV Aerials</li> </ul>	<p>○ COMMERCIAL</p> <ul style="list-style-type: none"> <li>○ Extra Sockets to Full Re-wires</li> <li>○ Phone and Data</li> <li>○ Portable Appliance Testing</li> <li>○ Electric Heating</li> <li>○ Fire Alarms</li> <li>○ Consumer Unit Upgrades</li> <li>○ Freesat Installation</li> </ul>	<p>○ DOMESTIC INSTALLATIONS</p>
--	---	---------------------------------

**APPROVED CONTRACTOR**

**MEMBER**

**DOMESTIC INSTALLER**

[www.marshallselectrical.co.uk](http://www.marshallselectrical.co.uk)

# The Music Room

**Friday September 14<sup>th</sup>**

Blues with

**Alex Kumar**

+ The Dukes + Green Willow

---

**Friday October 12<sup>th</sup>**

Folk with

**Mitchell and Vincent**

+ Annie McGee and James Goodwin + Ben Morgan-Brown

---

Doors open 7pm for a  
7:30pm start

£Donation (£6+please)  
Bar. Food.



**The Waie Inn, Zeal Monachorum, EX17 6DF**

The Music Room is an activity of Hollocombe Music Club.

[themusicroomlive.org.uk](http://themusicroomlive.org.uk)

# 1000 YEARS IN DEVON

## A Celebration of Buckfast Abbey

Site of the first Buckfast Abbey, thought to be sponsored by King Canute in 1018, sits beside the River Dart on the southern edge of Dartmoor, south-west of Ashburton, just off the road (A30) to Plymouth.

The Benedictine order became rich and powerful and later fell into ruin after the Normans came in 1066. The Domesday Book recorded that Buckfast Abbey was rich with lands and cattle: they had 88 oxen, 80 goats, 29 pigs and 620 sheep. The first years of the Conquest were peaceable times but things changed for the worse when William Rufus took command.

**1136** - The second abbey was rebuilt in stone, on the current site, by Cistercian monks from France after its refounding as a new order.

In medieval times the abbey became rich through fishing and sheep's wool. By the 14thc. Buckfast Abbey had become one of the wealthiest abbeys in the South-West of England. It had

extensive sheep runs over Dartmoor, several manors in central and south Devon. Houses in Exeter, fisheries on the Dart and Avon. After the Black Death (1330) the Abbey declined again with few members left to maintain the buildings. But by mid 15thc. began once more to flourish, again declining in the 16thc. When only 10 monks remained in residence.



*The Corona with sixty lights.*



*Altar at East end of Church with Corona above.*

**1539** - Following the Dissolution by Henry VIII it was stripped and again left in ruins then demolished. The site was granted, by the Crown, to Sir Thomas Denys (c.1477-1561) who turn the site into a stone quarry. **1800-1872** The site was then purchased by Samuel Berry a local mill owner. He

demolished the ruins and built a Gothic style 'castellated Tudor' mansion house, and a wool mill in 1806. The only bits of the former abbey remaining were some outer buildings that were used as farm storage, the tower of the abbot's lodgings which still remains today.

Over several years it changed hands four times until in 1882 it was purchased by French Benedictine monks, exiled from France, who arrived to rebuild the abbey once more. Berry's mansion was incorporated into the new cloisters. A temporary church was constructed, which became the chapter house in the new buildings.

**1906-1938** – The present Abbey Church was constructed with never more than six



monks working on the building at anyone time. The community repaired the ancient foundations up to ground level. Primitive wooden scaffolding was used, held together by ropes, during its construction.

*West Front of Church and Monastery.*

Building continued throughout the First War, Some of the monks were of German nationality but saved from internment on condition that they stayed on the abbey site.

Buckfast Abbey was reinstated as an abbey in 1902. The Church was consecrated in August 1932 and the last stone laid in 1937, including the reconstruction of the tower. The work official completed in 1938. The only remaining medieval buildings still surviving are the Abbots Tower, the Saxon vault and the enormous barn (guesthouse).

The new St. Anne's Abbey Church is a mixture of Norman merging into English style of architecture. Built from designs of F.A. Waters architect.

The abbot set about rebuilding the Abbey. He organised monks to go to Exeter to learn stone work and carving, and building methods. Monks were known to be the builders of Europe, not given to be put off by anything to stop their vision being full-filled and the monks of Buckfast saw their miracle happen.

The Abbey building is a surprising sight within this green Devon valley. The inside is cathedral-like and difficult to believe that this is a 20thc. building. There is the Great tower (with 15 bells) rising to 158 feet. The roof is made of the famous local red sandstone, patterned like bricks, 50 feet above the floor of the nave. The nave has six

traciated altars, six chapels with fine artifacts within them. The stained glass windows are made from modern glass and materials are wonderful examples of craftsmanship. A small window honours the architect for his 50 years work, without seeing the final result of his labours and creativity.

There are several exceptional, glorious, treasures such as the wonderful Altar at the east end; a bronze font; a corona with 60 lights; a beautiful Madonna in the Lady Chapel, this statue was restored after it was discovered in the ruins of the old Abbey; an abbot's Throne made from Tudor panelling found in the old house on site and a bronze a candelabra, standing nine feet tall.

Here is a building enhanced with decorative elements of silver; gilding; bronze; copper; enamel; crystals; marble; and stained glass.

These 'men of God' and their craftsmen and workers have seemingly made a piece of heaven here on Devon's earth.

The Abbey is self-supporting, with a farm where vegetables are grown and bees, pigs and cattle are kept, shop which sells their honey and beeswax, fudge and many items made by religious communities around the world. Also a gift shop and restaurant. (The Grange)

Its most successful product is the Tonic Wine a fortified wine which the monks began making in the 1890's from a French recipe.



*Great Tower.*



*Bronze Font.*

On the west side of the Abbey are three gardens with plants ranging from herbs used in the cooking or medicine, and a lavender garden. Behind the public area is an enclosed garden for the monks. A bridge leads over the river to the abbey farm.

In the Abbey grounds is the School of Annunciation as a place of learning for adults and it offers part-time programmes, summer schools and short courses in a range of subjects.

A wonderful place to visit.

*Submitted by John Flower.*

## Word Search

Y	E	I	A	K	W	W	W	Y	A	U	Q	R	O	T
X	W	K	S	S	P	U	O	E	X	H	N	E	R	U
P	I	G	E	P	H	N	O	B	F	T	K	S	Y	X
S	Q	O	K	C	H	H	L	M	L	U	N	I	L	L
I	H	O	U	C	S	T	A	O	W	O	V	N	L	Q
D	W	D	Y	N	I	U	C	C	O	M	N	C	E	L
M	U	R	D	O	L	O	O	A	T	N	Y	W	V	B
O	E	I	E	T	W	M	M	R	S	Y	L	L	O	S
U	X	N	B	N	A	N	B	F	N	L	C	R	L	R
T	M	G	M	G	D	G	E	L	I	P	Y	J	C	F
H	O	T	O	I	J	I	T	I	H	L	P	T	C	W
V	U	O	C	A	A	E	T	W	P	G	V	R	N	O
S	T	N	L	P	N	T	Q	J	S	Y	T	J	L	P
R	H	S	A	N	E	D	Y	O	R	C	B	N	A	R
D	K	J	S	G	T	M	A	H	X	I	R	B	N	C

ILFRACOMBE  
GOODRINGTON  
PAIGNTON  
LYNMOUTH  
BRIXHAM

TORQUAY  
WOOLACOMBE  
SIDMOUTH  
DAWLISH  
CLOVELLY

CROYDE  
EXMOUTH  
SALCOMBE  
TEIGNMOUTH  
INSTOW

*Solution on page 63*

Over 25 years  
Experience!!

  
AIRFIELD  
GARAGE

We are a small family run garage,  
we have been established in Winkleigh for 3 years  
Carrying out all aspects of servicing, general mechanical work,  
bodywork repairs, and MOT preparation,  
As well as carrying out complete and part restoration work to classic cars,  
campers and modern vehicles.

*We welcome all enquiries and are happy to quote!*

01837 682678

[www.airfieldgarage.com](http://www.airfieldgarage.com)

## Number Puzzle

	4		6		3			2
		6			2		1	
		3	7			9		
6	3							
7					1	8	5	
5		9	4	7				6
		5	2			4		7
		2	5	8		1		
	8				9			

*Solution on page 63*

## Robinson Plant Ltd

[www.robinsonplant.co.uk](http://www.robinsonplant.co.uk)

A family firm with over 30 years experience

All aspects of earthworks, ground works and hard landscaping  
including:

Site Excavation, Concreting and Driveways, Sewers,

Septic Tanks and Treatment Plants, Stone Walling,

Paving and Patios, Brickwork and Block work

Foundations and Ground works

Land Drainage and Ponds, Riding Arenas

No job too big or small

Office: 01837 89065

Mobile: 07909 998945

Email: [alec@robinsonplant.co.uk](mailto:alec@robinsonplant.co.uk)

# *Heating, Cooking & Living.*

- Stoves • Range Cookers & Cookware • Renewables
- Flues & Chimneys • Spares & Accessories • Logs



We have one of the largest selections of stoves, range cookers, renewables, spares, accessories, flues and chimneys in the UK. Our knowledgeable and experienced staff are just a 'phone call away or why not visit our showroom just outside Winkleigh?

OPEN MONDAY TO SATURDAY, 9AM - 5PM.

**Telephone 01837 680068**

**[www.rangemoors.co.uk](http://www.rangemoors.co.uk)**



## Green Warriors

Concern expressed over uncut grass at Southernhay and Sunny View is due to staff cut-backs.

Matt from Westward Property Services has explained the situation.

The grass will get cut, but less frequently. He and his team (4 altogether) are responsible for over 80 sites from Halwill Junction to Dolton and Winkleigh.

There used to be a team of 8 (when under the auspices of Torridge) but under the umbrella of Westward Property Services the team been steadily whittled down.

Matt asked for understanding and has been astonished at some of the ferocious comments and complaints they have been subject to (not in Winkleigh).

When asked if there might be some areas left uncut to encourage bio-diversity, particularly wild flowers for bees, he was not sure. However observing how many gardens are being ripped up throughout the area they cover, he expressed the view that it might be necessary.

*Penny Griffiths*

### **ACCESS** **PHYSIOTHERAPY**

**SUSAN BENNETT**

**MSC MCSP HCPC REG**

**WITH OVER 30 YEARS  
EXPERIENCE OFFERS TREATMENT  
FOR:**

**ACHES  
SPRAINS  
STRAINS,  
SPORTS INJURIES  
BACK, NECK AND ALL JOINTS**

**DAYTIME, EVENING AND  
WEEKEND APPOINTMENTS  
AVAILABLE. TELEPHONE FOR  
APPOINTMENT  
01769 580513**



**THE SHIFTERS**

**Spirebourne Limited**

Liquid Waste Disposal and Drainage Co

### **EMERGENCY CALL OUTS**

Septic Tank/Cess Pool Emptying – Any Size  
Grease Traps  
Drain Blockage Clearance  
Various Commercial Liquid Waste Disposal  
Servicing  
CCTV Drainage Surveys  
Pump Repairs & Renewals  
Installation of Septic Tanks & Sewage  
Treatment Works  
Mantair Units

**FREEPHONE 08000 855 185**

spirebourne@hotmail.co.uk  
www.spirebourne.co.uk

## Solutions

Y	E	I	A	K	W	W	W	Y	A	U	Q	R	O	T
X	W	K	S	S	P	U	O	E	X	H	N	E	R	U
P	I	G	E	P	H	N	O	B	F	T	K	S	Y	X
S	Q	O	K	C	H	H	L	M	L	U	N	I	L	L
I	H	O	U	C	S	T	A	O	W	O	V	N	L	Q
D	W	D	Y	N	I	U	C	C	O	M	N	C	E	L
M	U	R	D	O	L	O	O	A	T	N	Y	W	V	B
O	E	I	E	T	W	M	M	R	S	Y	L	L	O	S
U	X	N	B	N	A	N	B	F	N	L	C	R	L	R
T	M	G	M	G	D	G	E	L	I	P	Y	J	C	F
H	O	T	O	I	J	I	T	I	H	L	P	T	C	W
V	U	O	C	A	A	E	T	W	P	G	V	R	N	O
S	T	N	L	P	N	T	Q	J	S	Y	T	J	L	P
R	H	S	A	N	E	D	Y	O	R	C	B	N	A	R
D	K	J	S	G	T	M	A	H	X	I	R	B	N	C

8	4	1	6	9	3	5	7	2
9	7	6	8	5	2	3	1	4
2	5	3	7	1	4	9	6	8
6	3	8	9	2	5	7	4	1
7	2	4	3	6	1	8	5	9
5	1	9	4	7	8	2	3	6
1	9	5	2	3	6	4	8	7
4	6	2	5	8	7	1	9	3
3	8	7	1	4	9	6	2	5

## What's On Diary – 2018

*Please send details of your events to [articles@distinctlywinkleigh.co.uk](mailto:articles@distinctlywinkleigh.co.uk)*

*Please also note that regularly occurring events are not usually listed here*

<b>September</b>	
2 <sup>nd</sup> at 6.30 pm	Recharge at Winkleigh Methodist – p 45
3 <sup>rd</sup> at 7.30 pm	Winkleigh Singers Open Rehearsal, Umlerleigh Christian Fellowship Church – p 11
5 <sup>th</sup> between 2 pm & 4 pm	Forget-Me-Not Friends, Community Centre – p18
9 <sup>th</sup> (see notices)	Church on the Beach, Winkleigh Methodist – p 45
10 <sup>th</sup> until 30 <sup>th</sup> November	A3124 road closure between RHS Rosemoor Gardens and Beaford – p 23
14 <sup>th</sup> from 7 pm (7.30 start)	The Music Room, the Waie Inn Zeal Monachorum – p 55
14 <sup>th</sup> to 16 <sup>th</sup> (starts - 2 pm concluding - 3 pm service)	St James Church, Bondleigh - Harvest Flower Festival Weekend – p 49
15 <sup>th</sup> between 2 pm & 4 pm	Forget-Me-Not Friends, Community Centre – p18
17 <sup>th</sup>	Closing date for WPC Grant applications – p 40
18 <sup>th</sup> from 4.30 – 7 pm	Chulmleigh Community College - Open Evening – p 5
19 <sup>th</sup> between 2 pm & 4 pm	Forget-Me-Not Friends, Community Centre – p18
22 <sup>nd</sup> – all day	Samaritans Selection Day 2 Summerland St., Barnstaple EX32 8JJ – p 44
22 <sup>nd</sup> at 7 pm	Ravilious Photographic Exhibition & Slide Show, Community Centre – p 3
23 <sup>rd</sup> at 11 pm	War Horse 10k Race, Iddesleigh – p 10
25 <sup>th</sup> at 7 pm	Winkleigh Morris – “History of Morris”, Community Centre – p 50
25 <sup>th</sup> at 8 pm	Winkleigh Morris Taster Session, Community Centre – p 50
<b>October</b>	
2 <sup>nd</sup> at 8 pm	Winkleigh Morris Taster Session, Community Centre – p 50

3 <sup>rd</sup> between 2 pm & 4 pm	Forget-Me-Not Friends, Community Centre – p18
2 <sup>nd</sup> at 8 pm	Winkleigh Morris Taster Session, Community Centre – p 50
7 <sup>th</sup>	Winkleigh Methodist Harvest Celebrations – p 46
8 <sup>th</sup> at 7 pm	Winkleigh Parish Church – Licensing of Rev Helen King + Bring & Share Supper – Village Hall– p 25
12 <sup>th</sup> from 7 pm (7.30 start)	The Music Room, the Waie Inn Zeal Monachorum – p 55
13 <sup>th</sup> at 2 pm	'Come and Sing Brahms' Requiem' in Torrington Church, workshop & performance – p 11
17 <sup>th</sup> between 2 pm & 4 pm	Forget-Me-Not Friends, Community Centre – p18
19 <sup>th</sup> evening	YFC 80 <sup>th</sup> Anniversary Ball, High Bullen – p 22
25 <sup>th</sup> & 26 <sup>th</sup>	Delivery of fresh flowers for Dowland Red Floral Tribute – p 10
26 <sup>th</sup> , 27 <sup>th</sup> , 28 <sup>th</sup> from 10.30 am - 7 pm	'Red Floral Tribute' – WW1 End Centenary St. Peter's Church, Dowland (EX19 8PD) – <u>p 10</u>
<b>November</b>	
2 <sup>nd</sup> from 6 pm	FOWS Bonfire & Fireworks Night, Winkleigh Sports Centre – p 20
7 <sup>th</sup> between 2 pm & 4 pm	Forget-Me-Not Friends, Community Centre – p18
9 <sup>th</sup> from 7 pm (7.30 start)	The Music Room, the Waie Inn Zeal Monachorum – p 55
10 <sup>th</sup> at 11 am	Remembrance Service – Airfield Memorial – p 25
11 <sup>th</sup> at 3 pm	Remembrance Service – Parish Church – p 25
21 <sup>st</sup> between 2 pm & 4 pm	Forget-Me-Not Friends, Community Centre – p18
23 <sup>rd</sup> <b>PROVISIONAL DATE</b>	Winkleigh Fair Christmas Concert – p 30
<b>December</b>	
15 <sup>th</sup> evening	Traditional Christmas Concert – Winkleigh Singers, Parish Church – p 11
18 <sup>th</sup>	Seven Stars 10 <sup>th</sup> Anniversary Party – p33
19 <sup>th</sup> between 2 pm & 4 pm	Forget-Me-Not Friends, Community Centre – p18

*All dates & details are believed to be correct at the time of going to press.*

***See [www.winkleighonline.co.uk](http://www.winkleighonline.co.uk) for updates between editions***

## And Finally . . . . .

Well the sun certainly shone for Winkleigh Fair Week this year and crowds of people came along to the events, so our thanks to the Fair Committee for all their hard work. But no rest; they have now started planning for their Christmas events.

Of course weeks of hot, dry weather also bring problems for some, not least the farming community: whilst harvests have been earlier, yields have been lower and grass has been growing very little, leading to potential difficulties ahead.

This time our roving reporter, Rachel Goldsworthy, has visited the Seven Stars to ask them some questions (see article on page 33) and find out what they have on offer. Thank you Rachel for your help. We hope you may have time to visit some other local enterprises on our behalf for future editions.

Despite it being the holiday season, there has been no lack of articles and adverts for this edition of Distinctly Winkleigh, so once again thank you very much for your continuing support. If you would like to receive email reminders of our deadline dates for each edition please let us know at [articles@distinctlywinkleigh.co.uk](mailto:articles@distinctlywinkleigh.co.uk)

Please note that the deadlines for contributions to the Winter Edition are **Friday 2nd November for advertisements** and **Friday 9<sup>th</sup> November for articles**.



Amy Pincombe FHP Dip  
Foot Health Practitioner  
Mobile Service  
07712 148038

## Caring for your feet

- Corns
- Callus
- Cracked Heels
- Fungal infections
- Ingrown toe nails
- Manicures & pedicures
- Verrucae

## JOSH NOON TREE SERVICES

**Fully qualified and  
insured tree surgeon.**

**All aspects of tree,  
hedge and fence work.  
Quality firewood and  
woodchip.**

**Friendly,  
reliable  
and tidy**

**☎ 01363 83863**  
**📞 07792 906258**





*John Short*

Professional Interior & Exterior  
Painting and Decorating

Clotworthy House, Torrington Road,  
Winkleigh, Devon, EX19 8HR

Telephone: 01837 83709

## **W.D & S.J CARNE**



---

*Independent Family Owned  
Funeral Directors*

---



Established over 60 years  
Personal Attention Day and Night

Carney Cottage, Winkleigh, Devon, EX19 8HX  
Email: [wdandsjcarne@gmail.com](mailto:wdandsjcarne@gmail.com)  
Tel: 01837 680199/83387

Pre-paid and Bespoke Funeral Plans Available

## DISTINCTLY WINKLEIGH - PUBLICATION INFORMATION

This newsletter is published quarterly by the Winkleigh Society at the end of February, May, August and November and distributed free to households in Winkleigh Parish.

All information is correct at the time of going to press. The views expressed in submitted material are not necessarily those of the newsletter team or the Winkleigh Society.

All our readers are most welcome to send in Articles (or reports, letters, drawings, etc.) which are likely to be of interest to the local community.

Please note that articles may be subject to editing, primarily for space or layout reasons.

**Articles can be emailed to [articles@distinctlywinkleigh.co.uk](mailto:articles@distinctlywinkleigh.co.uk), or sent to the Editor.**

**The deadline for articles is the second Friday of each publication month.**

**Advertisements from businesses in the local area are also welcome.**

**Adverts should be emailed to [adverts@distinctlywinkleigh.co.uk](mailto:adverts@distinctlywinkleigh.co.uk), or sent to the Editor.**

**The deadline for advertisements is the first Friday of each publication month.**

### ADVERTISING RATES

	Quarter Page	Half Page	Full Page
1 edition	£12.50	£25.00	£50.00
2 editions	£25.00	£50.00	£100.00
3 editions	£37.50	£75.00	£150.00
4 editions	£50.00	£100.00	£200.00

All contributions to the newsletter can be accepted in printed form, CD, memory stick, or as email attachments in WORD, PDF, PNG or JPEG file formats.

---

### EDITOR

**Godfrey Rhodes**, 32 Westcots Drive, Winkleigh EX19 8JP - Tel: 01837 682982

---

### WINKLEIGH SOCIETY COMMITTEE MEMBERS

<i>Chair</i>	Penny Griffiths	01837 83407
<i>Vice Chair</i>	Margaret Miller	01837 83398
<i>Hon. Treasurer</i>	Alan Mulcahy	01837 680145
<i>Hon. Secretary</i>	Philip Griffiths	01837 83407
<i>Committee Members:</i>	Alan Jacobs	Barbara Jenkins
	Royston Naylor	Godfrey Rhodes
	Wendy Oxborough	

Winkleigh Society membership is open to all Winkleigh parish residents, who may freely attend and vote at meetings. Further information about the Society and what is going on in

Winkleigh can be accessed online at: <http://www.winkleighonline.com>

---

HEDGEROW PRINT, CREDITON, DEVON EX17 1ES: 01363 777595