

DISTINCTLY WINKLEIGH



1918 - 2018

'We Will Remember Them'



Edition 68

Winter 2018

Cover sponsored by

Ian Shacklock, MTF Training, Moortown Farm, Winkleigh. 01837 83325

The Winkleigh Society Quarterly Journal

Clotworthy House



Let us help you take the stress out of family or friends coming to visit. Clotworthy, a period Georgian house close to the village centre, offers 4* Gold Award accommodation.

All rooms are large and with good views, and all have en suite facilities with free standing baths or showers.

Give us a ring for availability or send us an e-mail.

Clotworthy House Bed & Breakfast

Torrington Road, Winkleigh, Devon EX19 8HR

Telephone Susan or John Short: 01837 83709

Email: enquiries@clotworthyhouse.co.uk

Web: www.clotworthyhouse.co.uk



**Winkleigh's Family Run Residential
Sales & Lettings Agent**

**Pop into our office or call us for a FREE
no-obligation Valuation of your Property.**

01837 83393

E: vickie@howesestates.co.uk :

W: www.howesestates.co.uk

The Old Bank Hall, High Street, Winkleigh, EX19 8HX

Parish of Winkleigh

Roll of Honour

The Great War 1914-19

Alexander C.D.A. Staff.	Clover W.E. Royal Army Medical Corps.	Newcombe H. Royal Garrison Artillery
Baker L.W. Royal Army Service Corps	Heale J. Machine Gun Corps.	Otley Revd D.B. Army Chaplain
Baker R. Royal Defence Corps	Heathman W. Devonshire Regt.	Palmer A. Devonshire Regt.
Baker W. Devonshire Regt.	Holland W.R. Devonshire Regt.	Palmer F. Devonshire Regt.
Baker W. Royal Naval Air Service	Horn F. Devonshire Regt.	Palmer H. Royal Engineers
Beardon H. HMS "Ramilies"	Horner F. Royal Field Artillery.	Palmer S. Devonshire Regt.
Bell J. Royal Marine Light Infantry.	Hutchings F. Devonshire Regt.	Parker E. Royal Field Artillery
Berry B. HMS "Lupin"	Isaac E.H. Royal Naval Air Service	Parker F. Royal Field Artillery
Bissett W. Royal Engineers	Isaac O. Machine Gun Corps.	Parker H. Devonshire Regt.
Bond F. Royal Horse Artillery	Jarvis R. Devonshire Regt.	Parker Sam. Devonshire Regt.
Boundy H. Devonshire Regt.	Johnson E. (Miss). V.A.D.	Pinn A. Devonshire Regt.
Bremridge G. Royal Air Force	Johnson R.K. Devonshire Regt.	Reed G. Royal Army Service Corps
Bremridge J. HMS "Undaunted"	Jones A. Royal Field Artillery	Robins G. Coldstream Guards
Bryant W.N. Somerset Light Infantry	Knight A. Rifle Brigade	Saunders A.W. HMS "Hope"
Buckingham E. Devonshire Regt.	Knight J. Life Guards	Saunders F. Royal Naval Air Service
Clements S. Devonshire Regt.	Knight W. Devonshire Regt.	Saunders G.H. Royal Army Service Corps
Cowle E. Devonshire Regt.	Lane J.T. Glamorgan Yeomanry	Saunders T.E.J. Royal Air Force.
Darch F. Devonshire Regt.	London S. Royal Warwickshire Regt.	Skinner S. Royal Air Force
Darch W.R. Royal Field Artillery.	Letheren F. Royal Army Service Corps	Spiller C. Devonshire Regt.
Davey A. Royal Army Service Corps.	Letheren H. Royal Army Medical Corps	Stapleton A.H. Devonshire Regt.
Davey D. Devonshire Regt.	Longstone H.E. Devonshire Regt.	Stapleton C. Royal Army Service Corps.
Davey G. HMS "Marlborough"	Lugg F. Military Mounted Police	Stapleton R. South Stafford Regt.
Davey R. Royal Engineers	Lugg C. Devonshire Regt.	Stevens H. Devonshire Regt.
Davey T. Devonshire Regt.	Lugg T. Rifle Brigade.	Tipper A. Royal Engineers.
Davey W. Royal Army Service Corps.	Marcus W.K. Royal Air Force	Tipper D. Devonshire Regt.
Demmery B.V. London Regt.	Miller C. Imperial Camel Corps.	Ware A. Devonshire Regt.
Denford J. Royal Field Artillery.	Miller L. Imperial Camel Corps.	Ware C. Devonshire Regt.
Dingley T.K. Royal Engineers	Mitchell A. Royal Army Service Corps	Ware E. Devonshire Regt.
Dulling F. Royal Field Artillery.	Mitchell A.W. Devonshire Regt.	Ware W. Devonshire Regt.
Dulling S. Royal Field Artillery	Mitchell C. Royal Engineers	Western E. North Devon Yeomanry.
Dunn W.E. Machine Gun Corps	Mitchell F. Royal Army Service Corps	Wright H. Royal Navy.
Earle A.J. Royal Army Service Corps	Mitchell F.A. Royal Engineers	Cahill C.M. Royal Army Veterinary Corps
Ellacott E. Devonshire Regt.	Mitchell H. Devonshire Regt.	
Ellacott J. Devonshire Regt.	Mitchell P. Devonshire Regt.	
Everest A. Somerset Light Infantry.	Mitchell R. Devonshire Regt.	
Ford C. Royal Field Artillery.	Mitchell R.G. HMS "Warspite"	
Francis C.H. Devonshire Regt.	Mitchell W. Royal Engineers	
Francis C.W. HMS "Griffin"	Molland A. Royal Engineers	
Gay E.W. Royal Garrison Artillery.	Molland H. Royal Army Ordnance Corps	
Gay H.C. HMS "Collingwood"	Molland U. Devonshire Regt.	
Clover E. (Miss). V.A.D.		

The Honoured Dead - R.I.P

Yvonne Wilton Charles
Stapleton Albert
Jarvis Edward
Davey Frederick William
Westlock John
Homer Arthur Harry
Hemmett Ernest
Harvey Alfred Wallace

Heard Walter
Manley Ernest George
Darch Charles
Harris Thomas
Johnson Lawrence
Mitchell William
Knight Thomas
Davey Louis

Dovey Frederick
Buszaed Albert
Lugg Herbert
Parker Sidney
Cole George
Berry William
Beardon Percy
Molland Percy

Turner Frank

68414000
B. Gould
B. Gould

For more details on Winkleigh Heroes, see the WinkleighOnline website at the following link: <http://www.winkleighonline.com/wmc/index.htm>

Winkleigh Information Directory



It is now about five years since the last printed version of this useful local guide to Winkleigh businesses, services and organisations was published. In the meantime, the information in it has been kept as up-to-date as possible on our village website www.winkleighonline.com.

If there are any businesses or organisations whose entry in the online version requires correction, or businesses that would like their details to be included, or removed, please email website@distinctlywinkleigh.co.uk.

As supporting local businesses is a core objective of the Winkleigh Society, it was agreed at a recent committee meeting that an up-to-date, printed version of the Information Directory should be produced. Like Distinctly Winkleigh, one copy would be delivered free of charge to all residences in Winkleigh Parish.

Initial estimates have indicated that the cost of a reprint is expected to be fairly expensive, so to help defray the cost, the new version will include adverts on the inside and outside of the rear cover (and possibly the inside of the front cover). **If any local businesses would like to help by placing an advert, please let us know as soon as possible at the email address above.**

Meanwhile, if anyone wishes to add, remove or correct an entry in the current printed version, please contact us. Your help in this effort is absolutely essential so that this valuable resource for Winkleigh can continue and contain up-to-date information.

The Winkleigh Society



Qixx

Winkleigh

01837 83229

Electrical Contractors

- Rewires, New Builds, Extensions
- Consumer Unit Upgrades
- Showers, Cookers, Heating
- Internal / External Lighting
- Sockets & Telephone points
- CCTV & Networking
- Testing & Inspection (inc PAT Testing)



James Ravilious Photo Archive Exhibition & Presentation

On September 22nd, a very wet and windy afternoon, **Winkleigh Society in conjunction with Beaford Arts** held a **James Ravilious Exhibition** in the Community Centre of pictures from 1973 to the late 80s of scenes in and around Winkleigh. These wonderful pictures were all in black and white.

Despite the weather many people came and stayed for a long time. Two even came from as far as Kent to see the photos.

The room was a buzz of conversation, 'that's so and so', 'oh look there's so and so'. There was such a wonderful feeling of togetherness in the room with everyone talking to everyone else; how often do you get that!! A lot of the pictures were of past Winkleigh Fairs, which stirred many memories and caused a lot of discussion over tea and biscuits.

What would an event be in Winkleigh without a draw: there were so many lovely prizes including a book written by James's widow Robin Ravilious.

Margaret Miller

Evening Event:

During the evening there was a **presentation and slide show by Sophie McCormack (Beaford Arts, Hidden Histories Project Coordinator)**. Sophie gave a comprehensive talk about James's project at the then 'Beaford Centre', which broadly was to capture a rapidly disappearing way of rural life and work. What was so incredible, **he took nearly 79,000 images with his faithful Leica film camera**; all of the images had to be developed and were stored on 'contact sheets'. James only printed the ones that he considered of most artistic quality, labelling them 'Best' or 'Good'; because of this many of his photographs that he had labelled fair or poor were previously unavailable. These will eventually be available to view. Sophie also showed images taken by Roger Deakins who was another contributor to the Archive.



Documentary photograph by James Ravilious for the Beaford Archive © Beaford Arts

Here are two images that James took in Winkleigh, showing youths gathering near the pump and a tug o' war in the Square, during a Winkleigh Fair. See who you recognise. *(The Winkleigh Society is reproducing these photographs here with permission from Beaford Art, who are the copyright holders.)*



Documentary photograph by James Ravilious for the Beaford Archive © Beaford Arts

Over the last few years the vast catalogue of his work which has been recognised to be of national and international importance, has been the subject of a major project to digitise the images. This work is being carried out by Beaford staff and volunteers at the Devon Records Office, based in Exeter. All of the original contact sheets and associated by-work are now securely stored in a temperature controlled and fire proof facility for posterity.

To date over 10,000 images have been digitised and the task continues.

Other images can be viewed by logging on to: www.beaford-arts.org.uk/archive/

It is also possible to order prints from Beaford Arts (based at South Molton), please contact them for details on 01769 572573.

Phil Griffiths

 **Changes**
*Ladies, gents & children's
Hair and beauty salon*

All aspects of hair and Beauty catered for.

Telephone 01837 83004

appointments not always necessary



Exeter road , Winkleigh EX19 8HW

The Winkleigh Singers

What a wonderful summer and autumn we have had, and that goes for the choir too!

Several members took part in the 'Come and Sing Brahms Requiem' in October in Torrington which was a great success and brought together singers from all over North Devon and beyond.

We have been preparing a repertoire of songs, from madrigals to modern collections and after a summer break in August, we are back to practising for the Christmas concert. This is on **Saturday 15th December in Winkleigh Parish Church** and will include Vivaldi's Gloria, Christmas songs sung by the choir and, of course, audience carols. There is a bar and mince pies, so every reason to come along and start the Christmas festivities with us. The concert starts at 7.30 pm and tickets are via the website, choir members or at the door. As at all our concerts, accompanied under 16s will enjoy free admission.

We are also recruiting and welcome new singers to come along to our practices on Monday evenings in Umberleigh at the Christian Fellowship building on the A377. We would especially welcome tenors and basses! We have a varied repertoire and never know what our conductor has up his sleeve so it keeps us all alert!

The practices with a coffee break half way through make for an enjoyable evening and a feeling of achievement.

Have a look at our website www.winkleighsingers.org.uk, contact us or come along on a Monday evening at 7.30 pm and sing with us.



Registered Charity Number 117121

The Winkleigh Singers



Twixtmoors
~upcyclers~

01837 83148
www.twixtmoors.com
The Airfield, Winkleigh

Are you looking to replace your old and worn out furniture?

Why not consider letting us upcycle it for you before throwing it out

You have nothing to lose ... if you do not like it when done you do not have to have it back
We will move it on for you

Ancient Roots, Future Foundations The Emerging Neighbourhood Plan

Parish Councillors were given the opportunity to explore an early draft of Winkleigh's Neighbourhood Plan when they met for an informal discussion on 31st October. The Neighbourhood Plan, once finalised, will sit alongside the North Devon and Torridge Local Plan. **These two documents will be the main tools for decisions about planning applications in the Parish.**

The meeting was led by Maria Bailey, planning consultant, and was a chance to explore the contents, ask questions and suggest changes.

Maria applauded the thoroughness and rigour of the analysis and structure of the document and congratulated the Neighbourhood Planning group for their work. She considered it added value to the North Devon and Torridge Local Plan and was comfortably aligned with national planning guidance. A thorough knowledge of Winkleigh Parish is evident in all of the policy themes:

- **Environment and Resources**
- **Housing, Community Life and Wellbeing**
- **The Economy**
- **Transport, Travel and Movement**



Open Book

**Construction &
Developments Ltd**

**General Building Works
Period & Listed Building Renovations
Maintenance & Repairs**

For a free, no obligation estimate, please call:

01837 83890 • 07541 002017

info@obcd.co.uk www.obcd.co.uk

As a group we were taken through all the key topics. Questions, comments, discussions followed particularly about affordable housing, sustainable energy, and enhancing local distinctiveness [bus shelter on Exeter Road given as a good example]. The plan commits the Parish to working alongside Torridge to review the Supplementary Planning Guidance for the airfield. This would be an opportunity to do more work to draw together the diverse businesses and companies that operate there now, marry that up with enhancement and interpretation of the history of the airfield, while also taking steps to improve the natural environment of the site.

Some of the proposals in the draft document Maria described as ground breaking and forward thinking, particularly in terms of care for the environment and the approach to housing supply and release of housing land. Issues identified by the community, such as connectivity between neighbourhoods, highlighting walking and cycling, traffic concerns, local distinctiveness and design also clearly emerge as priorities for the plan.

Most important, at the end of the document, is a framework of how these policies can be delivered and monitored and who are the key agencies in decision making. Councillor and chair of Neighbourhood Plan group Councillor Adrian Mercer spoke about why it is so important that Winkleigh Parish Council makes thorough use of the final document in order to deliver the plan's aspirations.

Continuing with community outreach, the draft discussed by Councillors was on display at November's Saturday market. However, if you didn't get a chance to see it, be assured there is still some way to go before the Neighbourhood Plan is finalised. There will be a full public discussion about the proposals, supported by advertising and displays. This will give everyone a chance to have their say about the plan, and is likely to take place early in the New Year.

Cllr Adrian Mercer.

Claire Derby Psychotherapist



New Private Practice – 07841-474398

Nymet Rowland

❖ **Psychotherapy**

❖ **Meditation**

❖ **Reiki**

❖ **Anger Management**

www.clairederbyholistictherapies.co.uk

George Biddlecombe & Winkleigh Church

A sunny Sunday morning in early September, the sound of the Winkleigh Church bells is filling the cottage with a melodic ambiance induced by the sound of bells ringing. People have often asked, 'why did you move to Winkleigh?' I couldn't answer. It actually found me. Driving from Launceston to Exeter as a child on the old A30, I was always intrigued by the signpost pointing to Winkleigh, and I have always felt an affinity for this delightful village, and on my first visit to the Church felt an odd feeling of *deja vu*. The style and craftsmanship of the interior is very reminiscent of St Stephens Church, again set on a high rocky hilltop overlooking the Norman Launceston Castle with Dartmoor and Bodmin Moor beyond.

I was born at Pentillie in the Tamar Valley and St Stephens was my home for eleven years, when, after family tragedies, the death of my father and subsequently stepfather and family traumas, I was forced to leave Cornwall with my Mother, who vowed never to return. So when the opportunity came to retire back to the West Country I didn't falter. I have subsequently managed to trace a wonderful gentleman in St Stephens who had worked for the Biddlecombe family since he left school at age 14 and he is now in his 90s. He has the sharpest mind still and has furnished me with the description of events leading me to Winkleigh.

My Grandfather, George Biddlecombe, was the eldest son of George Mills and Mary Jane Biddlecombe. He had five sisters and three brothers. He was born in Totnes in 1874, as was his eldest sister Annie. His father was the first guard on the G.W.R. from Launceston to Plymouth.

George left school at 10 years and he then became apprentice to a Mr Burt of Launceston. He served 4 years apprenticeship and his first job was for the Duke of Bedford on the restoration of Dunterton Church. Whilst George was an apprentice with Mr Burt they built all the stations and bridges and cottages for the London and South Western Railway from Okehampton to Padstow.

When work became very scarce in the district for carpenters, George decided to emigrate to Canada. He sailed from Liverpool as a steerage passenger, the fare being one sovereign. He arrived in Toronto on Thanksgiving Day, November 25th with five gold sovereigns in his pocket. The approaching winter was not a good time to look for work as all outdoor work was closed down. He took a job in the backwoods sharpening saws for the wood-fellers, living in wooden shacks and surviving on Jack Rabbits. The following spring he took a job as a joiner in Toronto and London Ontario and was quickly made foreman. He earned sufficient money in the summer to keep him throughout the winter.

In Toronto he was in charge of erecting the first cold store, which was formed by double linings of Columbian Pine. Amongst various jobs he was in sole charge of making the Rose Window in St Peters Cathedral. Unfortunately he was sent for by

cablegram to return to England as his father had his thumb crushed by buffers at Lydford Station and suffered lockjaw and died before George arrived home in 1894. He did not return to Canada as his mother was left with young children to rear.

He then met up again with Fred Clifton of Ashwater. They had been apprentices together and they decided to form a partnership. Their first job was the re-roofing and re-seating of Winkleigh Church and the installation of new oak pews. The cost of this work was raised by the local farmers. The oak, which was bought from J Kittow, was previously stored at Newchurches Farm, St Stephens. The angels were carved by Mr Clifton and fixed on the wall plates in the Sanctuary, made of oak, 9 inches high and cost one guinea each. There was also oak which had been sawn and stacked on a farm at Ashwater. With this ample supply of dry fumed oak, they made altar tables and reredoses, which were sent all over the world, the Architect being Sir George Fellows Pring from London. The various carvers employed by Messrs Biddlecombe and Clifton, about 20 in number, were a travelling band of carvers who had previously worked in Peterborough Cathedral. One of these carvers named Sydney Endacott carved the lectern and 'the Stoning of St Stephen' on the pulpit of St Stephens Church, Launceston.

Business thrived, including the building of the original Launceston Hospital, a three storey addition to St Joseph's Convent, Ambrosia's dried milk factory at Lifton building at Endsleigh. During this time George also became a funeral director, copying the Canadian idea of wearing a silk top hat and morning suit, carrying a Gladstone bag. As all undertakers of the district wore bowler hats and dark suits, George was a smart attractive man as an undertaker. The firm, G Biddlecombe and Sons, carried out some 4,853 funerals and cremations between 1894 until the cessation of the business in 1972.

George was a true churchman with a fine baritone voice who assisted in the services in the responses and singing. I am sure he would be delighted to know that his granddaughter whom he never met, George passing away in 1942, is now living within sight and sound of one of his most cherished projects.

Julia Shorrock

gs gilbertstephens LLP
SOLICITORS

Local legal advice

Call our Crediton office on **01363 77 55 66**

Manor Office, North Street, EX17 2BR

Visit gilbertstephens.co.uk for more info

Gilbert Stephens is the trading name of Gilbert Stephens LLP which is authorised and regulated by the Solicitors Regulation Authority (no. 536070).

**FREE 20mins
consultation**

Winkleigh Life - Our Opinion


As fairly new Winkleigh residents, made welcome from the moment we moved from Holsworthy, we have already developed a fondness for the village and the mid-Devon countryside. We have been asked to give our views on particular Winkleigh issues.

The only negatives we have found are common to every town and village in the country, but we think they are well worth addressing on a local level; we think we can make a difference!

Litter: The village itself is kept beautifully tidy for the most part, although as dog owners ourselves we are a little embarrassed by mess not cleaned up by other owners. Very sad and lazy.

The outskirts of the village are quite badly littered in places, particularly the main road and Townsend Hill. We do try to pick some up but it is not always safe because of the traffic. **Is there a local group of like-minded people who work together to clean up? We would be interested in joining them, and if not would anyone be prepared to join us?**

Adam of Eden Tree Care



A Friendly, family run company aiming to provide a range of high quality arboricultural services to our customers trees.

Services include:

- Tree Removals / Dismantles
- Tree pruning, reductions, thinning, shaping and dead wood removal
- Hedge trimming
- Stump grinding
- Tree planting



All work is insured to £5million, complies with relevant British standards and is carried out by appropriately trained and equipped professional arborists

CALL NOW for friendly, professional advice and to arrange a **Free no obligation quote**

TEL: 07398268877

Email: adamofedentrees@gmail.com

Check us out on facebook and instagram: [@adamofedentrees](https://www.facebook.com/adamofedentrees)



Traffic:

The majority of motorists are considerate and allow space when passing pedestrians on Townsend Hill and village roads with no pavements; unfortunately some are thoughtless and seem to be of the opinion that roads were built for motor traffic alone. **Roads are shared spaces and consideration needs to be given those who are vulnerable** – children congregating at Farmer Frank's Lane junction with Townsend Hill while waiting for the school bus, pedestrians crossing Exeter Road to Vine Street, negotiating parked cars, blind corners, etc.

Speeding is a serious issue; the 30 mph limit is often exceeded and on narrow roads this is potentially dangerous. On a number of occasions my husband and I have been passed frighteningly closely by car and van drivers **who don't realise that 30 mph is a maximum safe speed** and that they should slow down further and move over for pedestrians, cyclists and horse riders.

We were delighted to hear of the Traffic in Villages presentation, and attended the meeting. The report by Hamilton-Baillie gave some useful ideas for improving the relationships between all road users and improving the quality of life for Winkleigh residents. We hope the resources will be available for them to be implemented.

We have been very impressed by the positivity and drive of the local community; some communities despair and give up, never succeeding in solving their problems. We can't see that happening in Winkleigh!

Pat and John Clark (pat-fairly@hotmail.co.uk)



CHULMLEIGH COMMUNITY COLLEGE

EVERY DAY IS AN OPEN DAY!

Contact us to arrange a prospective pupils' tour for entry in Years 7-9

Let us help YOUR child achieve 'Nothing But Their Best'

2018 GCSE Results

87% Maths & English Grade 4 (C) & above
(1st in Devon - non-selective schools)

37% of all grades 9-7 (A*-A)

Top non-selective school in Devon & South West for EBacc average point score!



www.chulmleigh.devon.sch.uk 01769 580215

admin@chulmleigh.devon.sch.uk

@ChulmleighAT

@ChulmleighAcademy

Winkleigh Church Flower Ladies

Our small group are thinking about our arrangements for Christmas, they will be in red, green and gold maybe with a touch of white.

Since Winkleigh fair we have decorated the church for the special licensing service of our new priest in charge Helen. The arrangements stayed in place for the harvest festival celebration when food items were added, and distributed to a local food bank.

Claire, Linda & Marcia were invited to arrange fresh flower arrangements at **Dowland Church** for the special tribute to commemorate the 100 years since the end of World War 1. All three thoroughly enjoyed taking part to help.

The floral tribute included a 12-metre long garland which was created with all red flowers (see next page). The flowers were either freshly grown or homemade from paper, ribbon, clay, or wool. All individually made and donated by local people of all ages. **Some were made by members of Winkleigh Senior Citizens, the Primary School, and other members of our community and their families.** Well done Winkleigh in helping Dowland.



Andy Barratt

ACIPHE Reg Plumber no 019139G

FULL BATHROOM INSTALLATIONS

WALK-IN SHOWERS

Full Tiling. Plastering and Electrical Incorporated

Competitive Rates & Professional Advice.

Fully Insured and Guaranteed.

Over 30 Years Experience.

Call Out Service for all your plumbing problems.

Home 01837 83025 Mobile 07850634670

Email andrew.barratt5@btinternet.com

Smythen Hill Cottage. Hollocombe.



Is there anyone out there who would like to join our friendly group? If so, we would love to hear from you. Please contact Linda on 01837 680040 or Marcia on 01837 83734

Marcia Butt & Linda Millership

SAM'S CIDER
TIS PROPER DEVON CIDER

**Celebrating
100 years
of cider being
made on site**

Makers of award-winning proper Devon cider

www.winkleighcider.co.uk info@winkleighcider.co.uk Follow us on Facebook & Twitter

You can visit us at Winkleigh Cider Company, Western Barn, Hatherleigh Road, Winkleigh, Devon, EX19 8AP
Onsite gift shop and local produce

WINKLEIGH PARISH COUNCIL NOTICE OF CASUAL VACANCY

Notice is hereby given that a co-option vacancy has occurred among the members of the Parish Council. Any person willing to fill this vacancy should apply to the Clerk in writing or email.

Any person wishing to apply to become a member must meet at least one of the qualifications set out below in order to be eligible for co-option and must not be disqualified under Section 80 of the Local Government Act 1972.

- The applicant must be registered as a local government elector for the parish; or
- The applicant should, during the whole of the twelve months preceding the date of co-option occupied as owner or tenant, land or other premises in the parish; or
- The applicant's principal or only place of work during those twelve months has been in the parish; or
- Have during the whole of twelve months resided in the parish or within 3 miles of it.

PUBLIC elections cannot be held until the year 2019 but for the interim period the present sitting Councillors may co-opt to fill the vacancies.

Melanie Bickell

Winkleigh Parish Clerk

01837 89095

winkleighpc1@btconnect.com

Lower Itton, Spreyton, EX17 5BB

25th January 2018



TEN ACRES VINEYARD

Wine shop & camping open 1st May- 30th Sept



10am-8pm Closed Wed.



At weekends, free tastings and wine for sale by the glass.

www.tenacresvineyardcamping.co.uk or (01837) 83892

Ticket To Ride: A Student's Journey to Petroc

"Up at 6:30 am to catch the bus to Petroc (Barnstaple) at 7:15 am and arriving back home in Southernhay as the sun sets at 6:30 pm" recounts Brianna as she talks about her first half term at Petroc.

It's a long day for Winkleigh youngsters when they leave secondary school. Catch the bus, Barnstaple bound, by Mid Devon Motors, where there is no shelter, for the 3 or 4 Winkleigh students attending Petroc. Over the road up to 10 are waiting for the Exeter-bound bus and they do have a bus shelter. Others catch the train at Eggesford, but only those who can be driven there: and there is nowhere to park.

Brianna wishes there was a college bus as it costs £4.70 a day or £61 for 4 weeks on the Stagecoach regular service. **At 16-plus, college students are charged the adult rate.** Once when lectures were cancelled they were told they could go home. Easier said than done when you are dependent on an infrequent public bus service.

Rural school children are used to long journeys. Going to Chulmleigh Community College, Brianna recounts, took about 40 minutes.



JAD MOTTRAM
PLUMBING & HEATING

Gas • LPG • Oil • Solid Fuel

All Plumbing & Heating Works
Multi Fuel & Wood Burning Stoves
Drainage & Septic Tank Installation
Residential Park Homes
Static Caravans

www.plumberinsouthmolton.co.uk
jadmottram@hotmail.com

01769 560985 / 07933 166664



Need Help In the Garden?

**RHS Qualified, Experienced
Gardener**

All Aspects of Garden Maintenance

Planting Ideas

Year Round Reliable Service

**Call Maxine on 01837 680039
or 07815 309023**



She and others would wait outside the Primary School, sometimes being told off by irate car drivers that they were in the way, but with no shelter they just had to huddle where the school bus would draw up. Brianna remembers the worst times when it was raining, making them cold and wet all day.

None of the pick-up points for secondary school children, Westcots, Elms Meadow and Torrington Road have specific bus stops.

“I am definitely going to learn to drive as soon as I am 17”, says Brianna. “I did think the other day it would be so much easier if I lived in Barnstaple, as so much of the day is lost in travelling”.

“I like Winkleigh but it is not good for walking or cycling. There are no crossing places. The road past the playing field is very fast. Waiting in the morning by the side of the road past Mid- Devon Motors there is very heavy lorry traffic and they are travelling at speed”. Liz, Brianna’s mum agrees about the speed, particularly on Townsend Hill when she walks down to the Public Footpath. “Drivers gesticulate like we have no right to walk the road” “Winkleigh Fair Saturday is great when the square is car free”, says Rhianna.

Interview conducted as part of the follow-up to the HAMILTON-BAILLIE TRAFFIC SURVEY commissioned by Winkleigh Parish Council for the Neighbourhood Plan.



Winkleigh

CLOTHING CO.

Print & Embroidery Services

BUSINESS BRANDED CLOTHING

WORK & SAFETY WEAR

SPORTS TEAM KIT

SCOUTS & GUIDES UNIFORM

SCHOOL UNIFORM

GIFTS & PARTY ITEMS

*Professional, affordable, good quality personalised workwear
with NO minimum order*

Winkleigh Clothing Co. (Bissetts Garage), Exeter Road, Winkleigh, EX19 8HW

01837 682827

www.winkleighclothing.co.uk **info@winkleighclothing.co.uk**

Winkleigh Parish Cemetery

Did you know that: -

- The Parish Cemetery has been owned, maintained and run by Winkleigh Parish Council since 1952.
- The site used to be part of the airfield infrastructure and there is still an air raid shelter in the grounds.
- The bungalow was converted from a wartime building and was originally the caretaker's accommodation.

The Parish council originally bought the site when it became clear that the churchyard was running out of space, and there was a need to provide a facility for local people to be buried near their families. With this in mind the cemetery has always been considered a parish asset run for the benefit of the people of Winkleigh.

The initial purchase was paid for by the parishioners and over the years the charges for burials have been kept as low as possible. We like to keep the cemetery in good order and, as with everything else, this costs money, so although we have had to increase our prices a little, our charges are still considerably less than other cemeteries in Torridge. The use of the cemetery is not restricted to just Winkleigh parishioners, and we welcome people from other parishes into our graveyard parish boundaries (though to be fair to our own taxpayers, the charges are more for those

Jenny Rock

Rock Solid Book-keeping Solutions

Creating order from Chaos!

Collacott Lodge,
Winkleigh,
Devon EX19 8LE

Mobile: 07743 683 756

Email: rocksolidbookkeeping18@gmail.com

Book-keeping, Bank reconciliations, Creditor & Debtor Reports.
VAT Returns, Accounts to Trial Balance, Liaise with Accountants.
Temporary, 'One-Off' and Permanent Contracts undertaken.
Friendly, helpful advice for small businesses.

Accounting experience in:

Farming, Manufacturing, Pub, Convenience Store and Retirement Homes

CIMA Advanced Diploma in Management Accounting.
Association of Accounting Technicians NVQ IV.

outside the parish boundaries). All grave rights at Winkleigh cemetery are sold for 100 years, to be used by the initial purchaser or their heirs, so it will be a long time before a grave plot can be reused by someone else. The actual land remains in the ownership of the council.

- It is possible to pre-purchase a plot before it is needed, which often happens when family members want to stay together.
- Most of the site has been consecrated for Christian burials but there is an area of un-consecrated ground reserved for those who do not wish to have a Christian burial.
- There is a clause in the original purchase documents that ensures the site can only be used as a cemetery, and that no part of it can be sold or used for anything else.
- At the present rate of use there will be space for at least another 100 years.

All the parish councillors are automatically on the burial board, and all the day to day administration is done by the parish council clerk who will be happy to give anyone some more information, or help with the purchase of a plot. We are proud of our graveyard which is always open to the public to walk around and quietly reflect on the lives of those who have gone before us.

Melanie Bickell, Parish Clerk, 01837 89095, winkleighpc1@btconnect.com

ACCESS **PHYSIOTHERAPY**

SUSAN BENNETT

MSc MCSP HCPC REG

**WITH OVER 30 YEARS
EXPERIENCE OFFERS TREATMENT
FOR:**

**ACHES
SPRAINS
STRAINS,
SPORTS INJURIES
BACK, NECK AND ALL JOINTS**

**DAYTIME, EVENING AND
WEEKEND APPOINTMENTS
AVAILABLE. TELEPHONE FOR
APPOINTMENT
01769 580513**



THE SHIFTERS

Spirebourne Limited

Liquid Waste Disposal and Drainage Co.

EMERGENCY CALL OUTS

Septic Tank/Cess Pool Emptying – Any Size
Grease Traps
Drain Blockage Clearance
Various Commercial Liquid Waste Disposal
Servicing
CCTV Drainage Surveys
Pump Repairs & Renewals
Installation of Septic Tanks & Sewage
Treatment Works
Mantair Units

FREEPHONE 08000 855 185

spirebourne@hotmail.co.uk
www.spirebourne.co.uk

Winkleigh Church Wives Group

The Wives Group held their AGM in June 2018 at which Monica Cowle stood down as Vice-Chairman, little did we know that this would be our last meeting with Monica. Monica had been a founder member of the Church Wives Group, previous called the Young Wives and served as Secretary for over 50 years. She was a great help to me when the baton was passed on. We will sadly miss her presence at our meetings.

We all enjoyed our coach outing to Brixham in August, the weather being fine. September saw us start the new year of programme with the annual Church service followed by the meeting back in the hall.

Arrangements were made for the Autumn Fair to be held on Saturday November 17th from 10 am to 12 noon. Our designated charity this year is North Devon Hospice. We will have our usual stalls, Hamper, Tombola, Christmas items & Cakes as well as refreshments.

We have a variety of speakers arranged for the coming months: John Dike talking to us about "Shackleton & his ship Endurance"; in December we have a social afternoon with a quiz and refreshments, and in January we will be enjoying our Sunday Lunch at Libbation Golf Club. In the New Year we look forward to subjects such 'Farm to Fork', 'Hats & Fascinators' and 'Card Making'.

We look forward to seeing you at any of our meetings, which are held in the small room of the Village Hall at 2.30 pm on the second Monday of the month.

Janet Magor

Marshalls

ELECTRICAL CONTRACTORS LTD
WINKLEIGH & MORETONHAMPSTEAD
CALL US ON 07970705471 or  Find us on Facebook

'Working to keep you connected'

o **INDUSTRIAL**

- o New Builds / Extensions / Refurbishments
- o Security Lighting / Emergency Lighting
- o NICEIC Inspection & Testing
- o Full Design Service
- o Low Energy LED Lighting
- o Freeview TV Aerials

o **COMMERCIAL**



MEMBER

o **DOMESTIC INSTALLATIONS**

- o Extra Sockets to Full Re-wires
- o Phone and Data
- o Portable Appliance Testing
- o Electric Heating
- o Fire Alarms
- o Consumer Unit Upgrades
- o Freesat Installation



APPROVED CONTRACTOR

www.marshallselectrical.co.uk



DOMESTIC INSTALLER

Tribute to Monica Cowle



Monica was born and raised in Broadwoodkelly and educated in three local schools, before nursing in Plymouth and teaching in Hastings. She loved nursing but was forced to give up for health reasons and teaching was also cut short due to family commitments, which brought her back to Broadwoodkelly.

She moved to Hollocombe after she married John Cowle in 1952 and always had a great affinity with Winkleigh. She was a familiar face to many and would always take the time to speak to people. She was Secretary of the Winkleigh Wives Group for 50 years and an avid fundraiser and brass cleaner for Winkleigh Church for many years. Monica was the person who delivered flowers and eggs to the sick or elderly in Winkleigh after they had been donated at the Winkleigh Fair Church service on the Sunday. She would also have been an extremely wealthy woman if she was given a pound for every cup of tea she had ever poured for some function in the village!

Many times after she died, people told me that she and her late husband John had helped them in some way. They were both 'the couple that this world could do with more of' - they liked people to do well and succeed in whatever they had set their heart on. Helping people was second nature to Monica and she sacrificed her home and time to three elderly family members in their final years. All this was done whilst working on the farm and keeping holiday guests happy when running a bed and breakfast business. This hard work and sense of devotion will explain why she was voted to be President of the Torridge and West Devon Conservative Constituency at the age of 89 years!

Monica turned 90 in March of this year and she organised a party with great joy and efficiency. None of us who were lucky to have been part of it could have believed that she wouldn't be around just five months later. However, her illness was short, pain free and as dignified as anyone could wish for. She will be missed by so many people and her lack of presence will create a certain void in Winkleigh.

She was simply a very special woman who did a lot of good things for a lot of people. For many of those who knew Monica, I am sure you will feel the same as we do, in that Monica not being around is like those missing jigsaw pieces in a puzzle sometimes: you can still complete the puzzle without them and you can appreciate the picture, but it was a much more satisfying and pleasant experience when the puzzle was complete.

Sarah Cowle

Bird Numbers Increasing!

A few months ago I was driving by Eaglescott airfield and noticed some white birdy-looking shapes at the other side of the field. As I always travel with binoculars, I pulled in to check them out. I thought they might be Common Gulls, which of course are not common. Indeed the name 'Common' is because they are often found on commons, rather than at the seaside. But they were not gulls at all, but a single Cattle Egret with a few sheep. Only last month I was standing at the café at Fremington Quay watching Little Egret and realised that one of them was a Great White Egret. Climate change is having its effect and this heron-like group of birds is the obvious sign especially for us in North Devon.

The Little Egret has been around now since the early 1990s and first bred in 2002. Last year there was a maximum count of 82 on the Taw so this is now a common sight, certainly up as far as North Tawton and in other wet meadows. Its black legs with yellow feet make it very distinctive, apart from the plume and the black bill.

The Cattle Egret has also arrived, with up to 40 birds in Devon in late summer, sometimes on the estuaries but in fields with cattle (or in my sighting, sheep), where they eat invertebrates disturbed by hooves. They have an orange-brown patch but this is not always obvious, but their bills and legs are yellow.

**LOCALLY BARN - REARED AND OVEN - READY
CHRISTMAS TURKEYS,
CHICKENS & GEES**



**MICHAEL WESTERN - MIDDLECOTT FARM
BROADWOODKELLY Tel: 01837 83381
LOCAL DELIVERY AVAILABLE**

The Great White Egret also has a yellow bill, but is very obviously larger and remains uncommon, but breeding in Somerset and at least five birds recorded in Devon. There are herons too, such as the Night Heron and the Squacco Heron, but there is little sign of these becoming regulars.

Two other similar birds, however, are becoming regular. Spoonbills are most common in February, and along the Taw including Fremington and Isley Marsh. There were 14 there last year. The extraordinary spoon-shaped bill is a very clear identifier, if only they will take it out from under their wing. Otherwise, and at long range, they are annoyingly difficult to be certain. The last new arrival is the Glossy Ibis, which can look black until the sun shines. A group of 20 was seen at Budleigh, but smaller groups are regularly seen on the Taw, with one which has stayed for several months on the Pill at Fremington. It is always easy to find, because there will be a small group with binoculars watching!

Quite why this particular group of heron-like birds should be the ones to benefit so obviously from climate change is not well understood, but it is certainly worthwhile to look carefully to distinguish long-legged white birds

Peter Howard

CoHeat Services

Oil-fired Heating and Cooker Specialists



Oil-fired Boiler, Rayburn and Aga Servicing

New heating systems fitted

All plumbing work undertaken no matter how small

Heating systems updated.

Complete bathrooms and kitchens including tiling and all associated works carried out. You supply, I fit, or I supply everything and fit as long as you supply coffee . . .

**For a free quote or just friendly advice call John on
01837 83080 or 07768 164696**

Parish Church News

The last few weeks have been a whirlwind of settling into the Vicarage, my licensing service, finding my way around the village and gradually getting to know people. The welcome I have received from everybody has been lovely and it's great meeting people when I'm out and about. Do stop and say hello, tell me your name and have a chat.

It's a busy time of year to land in a new parish, with the last of the Harvest Festivals, Remembrance Sunday, along with Christmas and Advent fast approaching. Much to do, much to plan and much to enjoy. This is probably my favourite season of the year, the glorious autumn colours, crisp crunching leaves and the beginnings of sparkling morning frost on the ground, all when the sun is shining of course! But even the dank, darker days with the howling wind and driving rain are somehow there to be enjoyed. A reminder of the power and force of nature which we struggle to tame and control, but which ultimately maintains the upper hand.

The church calendar at this time of year very much reflects the changing seasons as we move from autumn into winter. We have given thanks to God for the harvest, the wonders of creation and the food we rely on, then our thoughts turn to Remembrance Sunday. An occasion even more poignant this year as we commemorate the centenary of the end of World War 1, remembering all those who went and fought in terrible conditions, those who lost their lives and those who came home bearing the physical and mental scars of war. 'The war to end all wars' was sadly not the case and so we also remember all those who over the last 100 years have fought in the many conflicts since, along with those men and women and their families who continue to serve in our armed forces. An opportunity too to commit ourselves to work for peace and justice in our homes, communities and the world.

Then we come to Advent at the beginning of December, a time of preparation as we look towards Christmas. A time when as Christians we prepare again for the birth of Jesus, a time to reflect and pause, to spend time in prayer and reading the Bible. The run up to Christmas can be crazy: food to buy, gifts to select, presents to wrap and cards to write. A never ending to do list and seemingly never-ending queues in the shops. We can so easily get to Christmas day tired and exhausted, fed up of mince pies and never wanting to hear another Christmas carol again, completely forgetting the whole point of the season. Advent reminds us to stop and pause, to look forward to Christmas day and to enjoy the run up. To take our time in preparing and to remember whose birth it is we are celebrating.

As the days get darker and we get closer to winter, on each of the four Sundays in Advent in church we light a candle on the Advent ring, increasing the light which shines in the darkness. Then on Christmas Day we light the final candle, reminding us of Jesus the light of the world who came to bring the love of God and hope to all

people. The Son of God born right in the midst of this messy world, in a lowly smelly stable surrounded by animals, to a *young* couple who would then have to flee to a foreign country. The love of God made manifest in a tiny helpless baby, a love which is offered freely to us all.

The invitation is for all of you to come and journey with us this Advent and Christmas. The door of All Saints is open during the day for some peace and quiet, away from the queues and the presents. Come in and sit in silence, leave a prayer or simply have a rest. Come and join us for one of our Advent or Christmas services or carols in the Kings Arms – details will be on the church noticeboards and around the village. Come and celebrate the birth of Jesus and experience the love God has for each one of us.

Come and know that you will be welcomed in to your church.

Helen King (01837 83710 - revhelenking@outlook.com)

All Saints Church, Winkleigh

On 8th October we celebrated the **Licensing of the Revd Helen King** as our new 'priest in charge' of the parishes of Winkleigh, Broadwoodkelly, Ashreigney and Brushford. The service was conducted by **The Right Reverend Robert Atwell, Bishop of Exeter and the Venerable Mark Butchers, Archdeacon of Barnstaple**. It was a joyous occasion and during the service Helen was welcomed by representatives of the four churches, the Methodist church and various local organisations. Helen's family, her fiancé, many colleagues from her previous parish and other local clergy were present to celebrate with us.

In true Winkleigh tradition the evening was rounded off with a sumptuous spread of refreshments in the Village Hall. We would like to extend a big 'Thank You' to those who provided food, drink and help to make this happy occasion such a success.

Reverend Helen is now part of our community and we hope she will have a long and happy ministry here. We ask you all to support her and pray for her as she finds her way around her new parishes.

Sylvia Smith

Paw Prints Pet Care

Dog walking, Small pet sitting and Vet visits

Fully insured & D B S Checked

Hatherleigh based but covering Okehampton & surrounding areas.

Email : Pawprintspetcare2016@gmail.com

Facebook : Paw prints pet care

call Kirstie Rockett on 07392072463

Our Devon County Councillor Writes

It has been an eventful autumn on the County Council and, as ever, Highways matters continue to make up the majority of my enquiries from residents and when dealing with issues within Winkleigh.

I am pleased though to report some positive progress with Highways. Since I was elected as your County Councillor I have been lobbying hard for improvement works to take place within the Village and the Parish. In particular, the roads in and around Hollocombe have been in a bad condition for some time.

Slowly but surely the County Council has been able to repair some of the worst areas in Winkleigh and Hollocombe, resurfacing the roads near Tinkers Post and Berners Cross, along with 'jet patching' the road along Hollocombe Moor.

The 'jet patching' is a new type of road maintenance repair and having driven along Hollocombe Moor to inspect the repairs myself it would appear that they were done to a good standard. Nonetheless with any new technology there can be teething issues, so **I would welcome any feedback, positive or negative**, from residents.

Having been able to make progress on the rural roads, I am hoping that we can make **more progress on roads within the village** during the next financial year. As a regular visitor to the village I can see for myself that many of the roads are in need of repair or attention.

During the Summer I asked Highways to investigate the costs of carrying out a comprehensive set of repairs within the village and thanks to the work of our local Neighbourhood Highways Officer, a 'wish list' of road repairs was produced with works ranging from resurfacing through to patching and/or surface dressing.

Unfortunately, the estimated cost of this comprehensive package came to over £360,000! All the roads on the wish list have been submitted to the County Council's Highways Asset Management Department for consideration, however they will be competing for approval with all of the other roads and schemes submitted County wide.

As much as I would like all the roads in Winkleigh to be resurfaced, it is probably unrealistic, given the costs and the size of the county, to expect all of this work to be granted permission and carried out within one year. However rather than just 'hoping for the best', I asked the Parish Council to consider the list and rate the works needed by order of priority. By doing this it will, I hope, strengthen the case to the County Council's Asset Management team for granting permission to these works, as well as ensuring the roads deemed to need repair the most, according to the local community, are treated first.

Having considered the list, the Parish Council have requested that the following roads, in order of priority, should be allocated for repairs and improvement works -

Barnstaple Street, Castle Street, Church Hill, Eggesford Road, Torrington Road (60 mph section), and Farmer Franks Lane.

While I cannot at this stage guarantee that any of these works will take place (the Budgets for next year still need to be agreed) I am hopeful that this local input, together with funding from the Pothole Action Fund, will help ensure that some of these works take place.

Finally, I would like to wish all readers of Distinctly Winkleigh a very Happy Christmas and a peaceful and prosperous New Year.

If there are any County Council issues that you would like me to help on please do not hesitate to contact me. You can email me on andrew.saywell@devon.gov.uk or ring 07886 446560.

2019 – Winkleigh Monthly Market Is Changing

In order to try to attract more customers the market will be running at the earlier time of 9.30 -11 am. The new timings will come into effect from the first Saturday of February 2019 and thereafter on the first Saturday of every month

Winkleigh POST OFFICE

~ Not just a Post Office! ~

Large range of Greetings Cards, Gift wrap & Tags

Toys & Stationery

Photocopying, Scanning, Laminating & Fax service

Laundry & Dry Cleaning

Travel Money

Car Tax

Mobile top-ups & electric key charging

Cash Withdrawals at the Counter

Open 8.30 am-5.30 pm Mon-Fri

9 am-1 pm Sat

01837 83427

Owner: Tony Bayley

Winkleigh Neighbourhood Watch

It has been a while since we have put anything in Distinctly Winkleigh, so we thought that we would give you an overall crime update for Winkleigh Parish.

Over the last 3 months crime and criminal activity has not stopped. Our Police have received 15 reported crimes and 64 calls where logs have been generated. For further current information the Crime Report is posted in and outside the Community Centre. It is also now being posted on the board outside of the Village Store as well as inside the Village Hall. Please take the opportunity to see the types of crimes that are happening in and around our village.

Our Neighbourhood Watch alert system has continued to advise us of the scams and fraudulent activities in Devon. **You must all take care when answering phones, using social media and any other types of modern electronic items. Never give away your Bank details to strangers over the phone.** Hacking of bank accounts and of Social Media, i.e. Facebook etc., recently seems to be an even more common occurrence.

Recently Sara Thornton of the National Police Chiefs Council said that Police officers should concentrate on core policing. This was backed up by Met Police chief Cressida Dick who backed the call for a focus on violent crime. In the paper recently it was reported that someone beeped their car horn at someone else; this is defined now as a hate crime. The police had to waste their valuable time investigating it. They must have better things to do. The world has gone mad!

Again we urge you all to carry on being neighbourly and vigilant. **Please report any suspicious activity to the police on either 101 (for non-life threatening or non-urgent incidents) or 999 (for urgent incidents and ones where a response is required ASAP)** this will depend on the severity of the incident.

“KEEP ‘EM PEELED”



ALL SHINES WINDOW & EXTERIOR CLEANING

- WINDOWS
- GUTTERS, SOFFITS, FASCIAS
- SOLAR PANELS
- HOUSE WASH (SOFT METHOD)
- CONSERVATORIES
- ROOF DE-MOSS
- PATIOS, BRICK, PAVING, DRIVE-WAY



Tel: 01805 938502 - Mob: 07711079577

CAROLS IN THE BARN 2018

**COME AND SOLVE THE MYSTERY OF
THE NEW NOISY NEIGHBOUR!**



SUNDAY 23rd DECEMBER 5.00

BEECHLEA, BERNERS CROSS, WINKLEIGH

An interactive Carol Service for all ages.

Come dressed up in your favourite Nativity outfit.

Everybody has a part to play.

**Hot refreshments and collection for
Pancreatic Cancer.**

WINKLEIGH METHODIST CHAPEL

Winkleigh War Memorial Recreational Field Fund (incorporating the Sports Centre).

As we start to look forward to Christmas and all the joy, fun and celebration that we hope that this brings it is also time to reflect on the year as it slips by.

It has been a very successful year for **Winkleigh Football Club** as it embraces its future with vigour and enthusiasm. The refurbished pavilion provides excellent hospitality on match days, the pitch is in excellent condition and the management committee are steering the club towards a secure future. The team work both on the pitch and off it behind the scenes is brilliant with hours and hours of voluntary work making a massive contribution to the running of the Football Club. Similarly both the **Snooker Club and the Short Mat Bowls Club** have enjoyed a successful and well supported year. However it is with regret that the Fund Trustees have noted that some other long established activities at the Sports Centre have either stopped or are at risk of ceasing. This is a very sad situation but is perhaps a sign of the times particularly regarding the recreational habits of young people. On a brighter note this year saw the Sports Centre host a **wedding reception** and new users have come forward to contribute to the life of the Sports Centre. In addition the **village cricket match** once again took place and the public houses contested a lovely day's competition in Aunt Sally and skittles.

Chair of Committee Mike Wilson attended **the firework display** held on the field and congratulates Liz and her team for providing a fabulous night which was enjoyed by many. He considers, along with many others, that this event is one of the highlights of the year in the Winkleigh calendar. Look out for the next one in 2019.

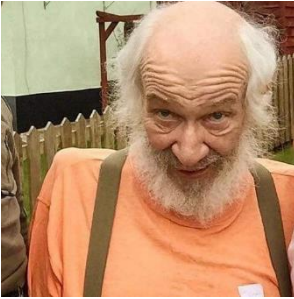
The **Youth Club** is beginning to plan their Christmas party, all are welcome and details will be shared as soon as possible. If you can help in any way please contact the Sports Centre via Facebook or ring Mike on 01769 520605.

The Trustees are considering responding to requests from the community for a **keep-fit suite**. Questionnaires have recently been circulated and the Fund Trustees are considering both cost implications and available grants. The Trustees greatly appreciate the value of such a suite in our community and welcome your support. Planning is in early stages but developments will be published at an appropriate time. Many initiatives never see the light of day for a whole range of reasons but the Trustees are optimistic that this idea can come to fruition.

As always the **Sports Centre Committee** looks forward to **hearing from you** with any ideas, offers of help or requests. They remain committed to providing the best for the people of Winkleigh and they work tirelessly to achieve this end.

Tom Radcliffe (Fund Trustee & Secretary of the Sports Centre Committee)

James B. Marshall (1942-2018)



Jim Marshall (a.k.a. “Lucky” Jim) was born on the 8th May 1942 near Newton Abbot. One of his earliest memories was his 3rd birthday in London when he was held up in the arms of his mother and all the crowds of flag-waving joyous people were cheering and clapping. He thought, as any 3-year-old might, that it was because of his birthday; so he was terribly disappointed the following year, when it simply didn’t happen. VE Day was over!

After a life of travelling the world, mainly Europe, and mainly by canal barge, Jim returned to Devon and lived for the last 15 years or so at Hollocombe and then Winkleigh. He was a familiar sight in the village, sitting on the bench outside the Church gate, he was known to many for being a yarn-telling rascal with a quick wit and sense of humour, non PC, spoke his mind without fear of the consequences and thus inadvertently could put people’s backs up, especially if they misunderstood his quirkiness.

A close friend summed Jim up in a sentence. After a moment’s thought he said, “Hmm well, until very recently we used to go to all the markets around here, and he would come out with statements such as: “You see all those 17 year old girls standing at the bus stop? Well, they all fancy me! “

Jim was well-educated (by nuns) very erudite, well-read and spoke languages fluently, including French and Dutch and in his life as a bargee met and helped all manner of people from every walk of life. In addition to being an authority on canals, waterways, locks and boats he was also a writer, voice over radio commentator and always interested in people. He also contributed to Distinctly Winkleigh.

In 2017 he was diagnosed with Motor Neurone Disease, but he never complained about it, as it gradually took away more and more of his ability to be independent. He didn’t want people to make a fuss, and he prepared himself for the inevitable end. The day before he died, he spoke on the phone to many of his friends and mentioned that he’d been given a new commission on a ship called Charon, the River was the Styx.

He died in Exeter hospital on 31st May 2018 having refused antibiotic treatment. He left his spinal cord to Motor Neurone Research. He leaves two sons, Jamie and Duncan, and two grandchildren.





One of Jim's favourite passages could equally describe how we may remember him:

"Of all the creatures of commercial enterprise, a canal barge is by far the most delightful to consider - you see it sailing high above the tree tops and the windmill, sailing on the aqueduct, sailing through

the green corn-lands: the most picturesque of all things amphibious - the man dreaming at the tiller sees the same spire on the horizon all day long - to see the barges waiting their turn at a lock affords a fine lesson of how easily the world may be taken. There should be many contented spirits on board, for such a life is both to travel and to stay at home." (Robert Louis Stevenson)



We don't Just Do Weddings!

The Ashridge Great Barn offers a large flexible space with inbuilt facilities in stunning surroundings
www.ashridge-court.co.uk

@ashridgecourtfarm 01837 352025



DH Garden Services

Garden Maintenance &
 Tidy Ups
 Mowing, & Strimming
 Hedge Cutting
 Shrub & Tree Pruning
 Lawn Care
 Local Business
 Fully Insured

www.dhgardenservices.co.uk

Tel: 07481 864686



Winkleigh Airfield Memorial Service of Remembrance

10.45 10th Nov 2018 at the War Memorial, Gerrydown, Winkleigh Airfield



Huddled under umbrellas in rain on the windswept Airfield as the flags of the 5 Nations represented on the Airfield flapped and pulled at their moorings, 84 people stood to commemorate the momentous sacrifice of those who had given their lives 100 years ago and those who had likewise used this very Airfield or been lost from Winkleigh

in WW2. As we stood in the muddy puddles with clouds darkening and heavy rain threatening it was suggested by Tristan Johnson that we shelter in his nearby barn and conduct the ceremony there.



Entering the huge barn as the sky darkened and surrounded by bales of thatching straw, trucks, pallets and equipment, with the driving rain and wind outside, it was almost like being on a World War Film set, it was as if we were touched by the plights of those brave men and women of the two World Wars that we'd come to commemorate! They seemed to be only just out of reach, it was as if the elements had driven us in there to enhance the experience for us.

The rain beating on the roof sounded like shrapnel so loudly that the words spoken were almost drowned out, the roll call of the fallen from Major Darcy and the words from Vicar Helen King.

However, the calm came after the Last Post sounded and we stood in Silence, followed by the Reveille.

Major Darcy recited the wonderful poem 'High Flight' by John Gillespie Magee Jr. a US pilot who'd joined the RCAF and had come to Britain to fly spitfires and lost his life at 19 just weeks after writing the poem. The rain had cleared and we were able to process to the memorial where the wreaths were duly laid.



The weather, it seemed, had come to lend us a touch of reality and true drama to the proceedings.

Rachel Goldsworthy

- **Major Darcy Gigèure C.D.1** with his son Tristan Gigèure Air Cadets Helston 3 Squadron on behalf of the Royal Canadian Air Force
- **Cllr. Simon Inch (Chair)** on behalf of Torridge District Council
- **Cllr. Alice Turner (Chair)** on behalf of Winkleigh Parish Council
- **Penny Griffiths (Chair)** on behalf of the Winkleigh Society
- **Tony Aston (Treasurer)** on behalf of Winkleigh Fair
- **Major F. R. (Ron) Fletcher** on behalf of the Royal British Legion



- **Service led by** Revd. Helen King Vicar of Winkleigh
- **Musicians For Last Post, Reveille and to lead the Hymns:** Carl Woodison
- (With standby kindly offered by Katrina Beer)
- **Refreshments kindly supplied by** Emma Caron at D & S Supplies
- **Shelter from the Elements** for the ceremony by Tristan Johnson in his Barn!
- **Grateful thanks** to the event organiser and co-ordinator Major Ron Fletcher
- 84 people attended
- Photographs courtesy of Greg Goldsworthy

*“Let us remember those no longer with us who fought for their country.
Let us remember those who gave their lives so that ours would be better.
Let us remember the pain of our relatives whose loved ones never returned.
Let us remember.”*

Greg Goldsworthy 2018



Attending the Airfield Service

QIGONG and TAI CHI Classes in Winkleigh

QIGONG exercises developed in China over thousands of years. They work to reinforce our awareness of our physical and spiritual state, and to deeper understanding of how to move and breathe. This helps us to relax and soften so that our energy (qi or chi) can move and circulate throughout our bodies. The result is better blood circulation to our muscles, tendons and organs and helps to reduce pain and stiffness.

Monday: Qigong Class in the Community Centre 5.00 - 6.00 p.m.

Thursday: Qigong Class in the Village Hall 10.30 - 11.30 a.m.

TAI CHI: There are many different forms of Tai Chi but with common elements; we do a Chen Man Ching Short Form - one of the simplest. Each movement flows into another. Although Tai Chi originates from a martial arts background we do the form very slowly and gently. It takes a while to learn the whole form, but doing it this way provides a flow which is peaceful and calming.

Thursday: Tai Chi Class in the Village Hall 11.40 a.m. - 12.30 p.m.

Both Qigong and Tai Chi are suitable for folks in their more senior years!

Wear comfortable clothing and flat shoes.....and bring £2.00.

Please note that the Monday class is currently having a break and will restart in the New Year on 7th January. The Thursday morning classes will continue until 13th December, and then a Christmas/New Year break takes us to beginning again on 10th January.

2019 will mark the sixteenth year of our Winkleigh Qigong and Tai Chi Classes. You are very welcome just to arrive at a session.

But if it would be helpful to talk about it first - ring Sue Williams on 01837 83817

Sue Williams



The Winkleigh Singers

CHRISTMAS CONCERT

Vivaldi: Gloria

Traditional Carols

**Saturday 15th December 2018
at 7.30pm**

**All Saints Parish
Church, Winkleigh**

Tickets £10 (accompanied under 16s FREE)
from choir members
www.winkleighsingers.org.uk
or on the door

Cash bar for wine and soft drinks
Complimentary mince pies

The Winkleigh Singers
Registered Charity No. 1171214

**making
music**



Winkleigh Society Update

Picking up the baton from Major Ron, the Winkleigh Society has helped with the organisation of this year's **Airfield Memorial Service**.

We wrote to all the businesses on the airfield inviting them to attend this service, hoping to raise awareness and forge links with new enterprises establishing themselves there. [See report on page 34] We plan to continue this initiative of forging links next year.

Thank You Tea for *Distinctly Winkleigh* postmen and women

Held at Fiona's Farmshop on November 17th. Tea and cake all round to show our appreciation, following on from last year's tea.

Our quarterly Journal is what The Winkleigh Society works hardest at and this occasion thanks all involved in its production and distribution.

Penny Griffiths (Chair Winkleigh Society)

Devon Wildlife Trust - Hedge Survey

Commissioned by Winkleigh Parish Council for The Neighbourhood Plan, two members of staff from Devon Wildlife Trust and two members from Winkleigh's Bio-diversity group conducted a hedge survey which included; Shute Lane and hedgerows to the West of Townsend Hill, all day on October 2nd. It was necessary to return on November 9th to complete the work on the land opposite the playing fields abutting the Parish Cemetery.

Thanks to the landowners for giving their permission to carry out this important survey of their hedgerows.

The DWT Report will eventually be incorporated into the bio-diversity section of the Neighbourhood Plan, once it has been submitted to the Parish Council.

What's Going On at Winkleigh Methodist Church?



Thank you so much to everyone who supported **light:quest** on 31 October and joined the treasure hunt trail to find the secret code, 'LET YOUR LIGHT SHINE'. All were reminded that Jesus is asking us to be a light in the world: to look out for others and use all the talents God has given us to help people around us. The sweets, chocolate,

goody bags and glow sticks proved very popular! A big 'thank you' also to all the volunteers who wrapped up warm and braved the weather to make this event possible.

This year we are hoping to form a band of merry men, women and children to cheer on the singing at the **Carols in the Barn on Sunday, 23rd December**. So, we are meeting at **7 pm on Tuesday, 11 December** at Winkleigh Methodist to practise the carols. Please feel really welcome to join in the fun – whatever your age or ability!! (Children to be accompanied by an adult please)



Calling All Singers!!! Or those that like singing!

We would love to see you at any of the following festive events:

- **Advent Party Tea Service – 5.30 pm on Sunday, 2nd Dec at Winkleigh Methodist:** Everyone of all ages welcome. Children to be accompanied by an adult please – bring and share food.
- **Christingle Toddler Session - 10.30 am – 12 noon on Wednesday, 5th Dec:** Come and build a Christingle and join in the festive fun with your toddler.
- **Oasis Christmas lunch - on Monday, 17th Dec at the chapel:** Please ensure you book in advance.
- **Tractor and carols around the village – Wednesday 19th Dec:** Our Church members will be busy decorating the tractor again and, as last year, there will be fewer stops and no door to door collection. We will be fundraising for Pancreatic Cancer UK so would be grateful for your support for this wonderful charity. Please come out and give your donation to anyone of our collectors standing/singing by the tractor. It would be great to have as many of you join the singers as possible – everyone is welcome to follow the tractor as it travels around (children to be accompanied by adults). More detail will follow, please check our notice board and/or Facebook nearer the time.
- **Carols in the Barn – 5 pm on Sunday, 23rd Dec at Beechlea Barn, Berners Cross, Winkleigh** Free entry – wrap up warm and enjoy some



carol singing and hot refreshments. Collection for Pancreatic Cancer UK. We would love to see you ☺

- **Christmas morning service – 10.30 am at Winkleigh Methodist:** This is just a short, informal service suitable for children and adults. Please join us if you are able.

Food Bank: Just a reminder that donations for the food bank based at Okehampton can be dropped into the Methodist Church (open for Sunday services as listed below and also open on Mondays for Oasis from 11 am – 2 pm). Families receiving the food donated will be particularly grateful at this special time of the year.

Our regular activities continue

Sunday worship begins at 11 am with coffee served from 10.40 am. Sunday School and SOW for teenagers runs at the same time. Every first Sunday in the month we meet at 5.30 pm (café church) or 6.30 pm (Recharge, youth focus) instead of 11 am and have an informal time of worship and bring-and-share food. Please see our notice board for more detail.

SPACE Youth Club runs on the second and fourth Friday of every month: Years 5 & 6 from 7 to 8.15 pm and Year 7 upwards from 8.15 to 10 pm - £1 entry fee and a tuck shop available for anyone wanting to buy a snack.

Oasis continues to run on Mondays with a home-cooked two-course lunch being served at 12.30 pm (coffee, lighter lunches or cakes also available). All ages welcome – please pop in!

All worship times and preachers are on our notice board outside of the chapel along with any other special events. If you are on Facebook, you will be able to keep up to date with what's happening at **WINKLEIGH METHODIST CHAPEL** or **SPACE for Youth Club information**.

For more detail about church life or prayer requests please contact any of the people below, or any other church member, and we will be do our best to help you.

*Alan and Fiona
Marshall 01837
83809 / Pam Down
01837 83674*

**We would like
to wish you all
a happy
Christmas and
best wishes for
2019!**



All Saints Church – Christmas 2018 Schedule

At **All Saints Church**, Winkleigh, we try to organise regular ‘**coffee and cake**’ fund-raising events. They are well supported by residents – both regular church-goers and many who aren’t! They benefit on-going church operations – like recent work on the bell ropes and church clock. More importantly, they provide much-needed funds for local, national and international charities - an important part of church mission and outreach. In 2017, our fund-raising activities aided a total of **£1,445** in charitable donations.

This year we weren’t able to organise our annual Harvest Luncheon, so the usual funds from that event, including the popular auction of produce, haven’t been available to aid worthwhile causes. The more reason, perhaps, to back our efforts to make Christmas 2018 the most caring ever as we start our annual ‘**Crisis this Christmas**’ appeal, plus attempt to support the work of the **Okehampton Food Bank**.

Watch out for details of an upcoming coffee morning in support of ‘**Crisis this Christmas**’. Even if you can’t attend, consider making a general donation. Envelopes will be available inside the church. Last year we raised £275.00

During the month of December, leave a donation of food at the back of the church. In 2017, we delivered over 250 lbs. of much appreciated food to local food banks. Can we do better this year?

Please make a note of our service schedule over Christmas. The family-orientated **Crib Service will be held on Christmas Eve at 5:00 pm**. We will again be joined in celebration by our friends from the Winkleigh Methodist Chapel. Afterwards, there will be mince pies and refreshments on offer. **The Midnight Mass commences at 11:45 pm and there will be a Christmas Day Eucharist at 9:30 am**.

Please come along and join us. All are welcome.

Collin Gibson – Church Treasurer



Jacquie Kenny MAR, MFPR

Precision Reflexologist, Reiki Practitioner & Animal Healer

For help with a wide variety of physical maladies and stress-related problems please contact me on 01837 851793, or visit www.jkreflexandreiki.co.uk for more information.

Winkleigh YFC

Another busy autumn time has passed for the young farmers both on the farm and off, with such lovely weather it really has been lovely working outside compared to last year!

As you probably know by now, as a club we love to get involved in all of the **local carnivals**. So, many hours were spent painting our float, which this year has the theme 250 years of the Circus. We have taken part in 3 carnivals so far; Okehampton, South Zeal and Dolton. Receiving Best YFC, Best Visitors and Best Overall at Okehampton which was an amazing start to the season! We achieved 2nd in class and Best YFC at South Zeal and 1st prize and best young farmers at Dolton. We hope to finish off the carnival season in style at Hatherleigh and Holsworthy, before hanging up the wigs and animal costumes and letting our hair down at our Tarka group dinner and dance at the end of November.

Whilst on the topic of dinner and dances, we celebrated our **80th Anniversary at High Bullen Hotel on the 19th October**. It was so lovely to see such a mix of past and present members, parents and associates coming together to enjoy the evening together. We welcomed Mike Tweddell from **Farms for City Children** as our guest speaker (this was one of our 8 chosen charities). We also had representatives from most of the 7 other charities and we did a cheque handover.

You will be pleased to hear we reached our **£8000 target**, so they all received **£1000** each. An amazing achievement by the whole club! Special thanks to **Claire Weeks**, last year's chair, for organising the event.



Cheque handover: *Bottom photo – Members with Judy Down from FIG.*
Top Photo- Representatives from Farms for City Children, Farm Community Network, Devon Air Ambulance.

Some of our members have just been away for a **short trip to France**. Staying in Beauvais; we visited the Massey Ferguson factory which has been operating there since 1960; with Massey Ferguson itself being 60 years old this month. They produce



around 75 -80 tractors a day and we were lucky enough to see some coming off of the production line. We also spent a day in **Paris**. We visited as much as we could whilst we were there, including Notre-Dame Cathedral, the Eiffel Tower and Arc de Triomphe and enjoyed a bus tour and river cruise. Huge Thanks to **Will Elworthy** for organising it! I think I can speak for everyone who went when I say it was really great to see a new part of the world with some amazing YFC friends!

As of our AGM at the beginning of September our new chairman, Tim Laarveld, Secretaries, Danielle Bradford and Ashleigh Chambers and Treasurer, Nathan Gillard have been busy organising events. The first was the new members meeting which saw a few new faces. However if you missed it but are still keen then come along to any meeting (see contact details at the end). This is a great time of year to join as you can make full use of your membership.

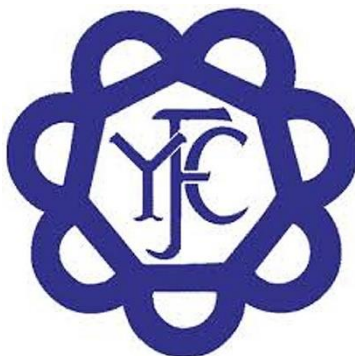
They then organised a ten pin bowling trip to coincide with half term which was enjoyed by many of the members.

Upcoming events:

- 16th November – Cider and Pasty Quiz at Winkleigh Village Hall 7 pm
- 30th November – Blind drop starting from Iddesleigh village hall 7 pm
- New Year Disco at the beginning of January.

For any more information on the club please see our **Facebook page 'Winkleigh YFC'** or contact Ashleigh Chambers on 07949886480

Katrina Brook



WI News

Not much WI news this time, except to say that for any ladies who are not able to go to **Ashreigney WI** on the first Tuesday evening of the month at 7.15 pm, the alternative would be to go to **North Tawton WI** who meet on the first Wednesday afternoon at 2.00 pm. The venue is the North Tawton Rugby Club. They will be made most welcome in both places.

Claire Tricker

Congratulations to.....

Louisa Saunders on completing your 1st marathon at Bournemouth.

Louisa has raised over £600 for the charity Mind.

Well done the Vet, love Mum Dad and James

Tracey Saunders

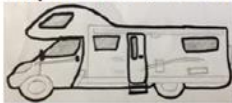
Prizewinning Hatherleigh Silver Band

Carol Concert - Seasonal Songs & Surprises

Thursday 13th December – 7.30 pm

Village Hall – Entrance £7

Camper Van for Hire



Comfortable, well equipped, six berth 'Bessie'

Collect and return in Winkleigh; holiday in UK

Book securely through Camplify for full insurance and breakdown cover:

<https://app.camplify.co.uk/rv/motorhome-rental-winkleigh-bessie/982>

Or contact Tamsin on 07532 397313 for more information

Facebook: @BessiesAdventures

C1 license required (automatic entitlement if licence obtained before 1997)

Winkleigh Fair

What a glorious autumn we have been experiencing – the colours of the changing leaves simply serve to make a beautiful village look even better.

Following the success of Winkleigh Fair back in the summer, it has been a fairly quiet few weeks for the Fair although behind the scenes much work has been going on to arrange the Christmas Market. We can't believe where the time has gone since we were doing this for last Christmas!

The Fair Annual General Meeting was held during October when the following Committee Members were either reconfirmed or appointed into post:

Chair – Kay Aston

Vice Chair – Kirsty Smith

Secretary – Julie Mustafa

Treasurer – Tony Aston

Committee Member – Sally Bayley



JOHN COCKRAM CHRISTMAS TREES



Norway Spruce
Nordman Fir
Fraser Fir

FRESHLY CUT

PICK YOUR OWN TREE

AT CHULMLEIGH HILL PLANTATION
On B3096 between Chulmleigh & Chawleigh
Sat Nav: EX18 7ES
Open Fridays, Saturdays and Sundays
From Friday 30th November
to
Sunday 16th December
-9.30am to 3.30pm -
-Peninnis, CHAWLEIGH
Tel: 01769 580129 or 07724 079733
johncockram@hotmail.co.uk

Member of
The British Christmas Tree Growers Association



Ossie Mustafa and Antonia Whittick gave notice of standing down from the Committee although both have agreed to remain as helpers. We would like to thank them enormously for the work they have done during their time in office and also for agreeing to assist us in the future.

On 19th October approximately 30 people attended a cinema evening in the Village Hall when the blockbuster film “The Greatest Showman” was screened. The number of people attending was a little disappointing although everyone who did go had a great time. See further on for the next cinema evening.

By the time you read this the **2018 Christmas Concert “Three Beaus and a Belle”** will have been delivered at the Village Hall (23rd November). Many of you will have already seen the

performers when they entertained us with their **“Hooray for Hollywood”** show back in the summer. They are another troupe that has been formed by D-Day Darling leader, Katie Ashby – whom we all know and love. She was hoping to be at the “Three Beaus” show so I hope that that happened.

On the topic of the D-Day Darlings, you may or may not know that they have been signed up by Sony Records and **have just released their first CD album “I’ll Remember You”**. What a great Christmas present that would make and wouldn’t it be brilliant to see it high in the charts. But let’s remember – it was all of us who saw them first in Winkleigh 2 years ago – a long time before Britain’s Got Talent!!

The spectacular Christmas Market and switching on of the Christmas Tree and street decorations will be taking place on Saturday 8th December – full details will have been published by now so please come along and enjoy the market, hot food and Christmas festivities. We are honoured that Ron and Jean Fletcher have agreed to switch on the lights and we will once again be singing carols around the tree.

In January we will be holding a cinema evening to get rid of the post-Christmas/New Year blues. Date to be agreed but we will be screening **“Mamma Mia – Here We Go Again!”** What a way to start the New Year! Admission will once again be by donation on the door so look out for the posters and come along – and sing along if you like! – to the Village Hall for an Abba-themed spectacular evening.

It only remains for the Winkleigh Fair Committee to wish everyone a very Happy Christmas and a peaceful New Year.

Tony Aston, Treasurer, Winkleigh Fair

Would you like to meet people in a welcoming and social environment then come along to the

OVER 60's

We meet every other Thursday in the small room in Winkleigh Village Hall.

Various activities take place.

Tea/coffee and biscuits are served.

Raffle.

Monthly coach outings.

The next meeting is the 8th of November 2018 at 2.15 pm and then fortnightly thereafter.

Do come along and if you have any questions then phone Pat on 01837 83487.



ALL WELCOME

Winkleigh Methodist Chapel

Winkleigh is celebrating Christmas with:

2nd Dec – Advent Party Tea Service

19th Dec – Tractor Carol Singing

23rd Dec – Carols in the Barn @ 5 pm

Calling All Singers!!! Or those that like singing

This year we are hoping to form a band of merry men, women and children to cheer on the singing!

So we are meeting on the 11th December at 7 pm
at Winkleigh Methodist to practise the Carols

Feel really welcome to join in the fun

Whatever your age or ability!

(children to be accompanied by an adult please)



**Over 25 years
Experience!!**


AIRFIELD
G A R A G E

We are a small family run garage,
we have been established in Winkleigh for 3 years
Carrying out all aspects of servicing, general mechanical work,
bodywork repairs, and MOT preparation,
As well as carrying out complete and part restoration work to classic cars,
campers and modern vehicles.

We welcome all enquiries and are happy to quote!

01837 682678

www.airfieldgarage.com

CANCER RESEARCH COFFEE MORNING (THE COFFEE MORNING FOR ALL AGES!)



For over 35 years an ever-increasing group of all ages have been meeting for coffee and natter on a Wednesday morning in the Community Centre from 9.30 during the mini-market.

**Tens of thousands of pounds have been raised for
Cancer Research UK.**

Come along and join us we would all love to see you.

(Editor's Note – Photographs reproduced with full permission)

Groundwork



Martin Parish Contracting

All aspects of ground works carried out from ponds to driveways & drainage.

Large or small projects undertaken. Including fencing and hedge trimming.

Martin Parish 07817 464420 or
parish@btinternet.com
www.mpcontracts.co.uk

Forget-Me-Not News

Apart from the two monthly Forget-Me-Not sessions on the first and third Wednesdays every month in the Community Centre, we also provide an **Advice Surgery on the second Wednesday of each month - thanks to additional funding provided by the Big Lottery.**

The **Winkleigh Community Advice Hub** brings together under one roof, a partnership with local voluntary organisations who will provide high quality Information and Advice, and support you to access services that meet your individual needs and circumstances.

Our hub provides local advice on navigating the health and social care services available to them, as well as giving them basic advice on health and wellbeing queries. We see this as being especially effective for the elderly living alone, Carers, and those who are feeling isolated or unsure who to speak to about Health and Social Care related issues

Bringing health and wellbeing help directly into communities – providing care and support closer to home – is going to be extremely positive for local people.

The **Advice Surgery is a safe and confidential environment** to discuss health-related topics including: emotional wellbeing, Financial/Benefit advice, confidence/self-esteem, as well as signposting and referrals to other services if needed.

Trish Burke (patriciab@torrage.org.uk)

Sueno Beauty

Changes, Exeter Road, Winkleigh. EX19 8HW

Aesthetic, Massage & Holistic Therapies

- **Swedish Massage**
- **Deep Tissue Massage**
- **Aromatherapy Massage**
- **Hot Stone Massage**
- **Hopi Ear Candles**
- **Reflexology**
- **Micropigmentation**
- **Micro Needling**

Contact: Gemma Jenkins Tel: 07590233607

Email: suenobeauty@outlook.com

Facebook: @Suenobeauty

Volunteering on Britannia!

The following was written by one of our volunteers, Andrew, – hopefully it will encourage others to join us. There are many tasks to be done, not all boat-building!

“In October 2018 I met Sam, Vicki and Britannia for the first time in 25 years. Sam and Vicki had withstood the passage of time remarkably well, barring the odd dodgy knee, but sadly Britannia wasn’t quite the elegant, if elderly, lady I had last seen at the quayside in Portree in 1993. The intervening years have of course seen her reluctantly sold by Sam and Vicki, subsequently enduring a period of neglect compounded by misguided and insensitive alterations resulting in the loss of most of the painstaking fitting out of her interior undertaken by Sam in the 1970s, and her sad decline from a graceful sailing vessel to little more than a hulk used as a floating dormitory in an obscure backwater.

Enter Sam & Vicki once more, fuelled by a determination not to let her slip into terminal decline but to rescue her and give her a new lease of life and a new purpose in her second century, once restored to her former glory. A thoroughly praiseworthy goal, but a huge challenge nonetheless despite the growing army of supporters and volunteers Sam and Vicki have enlisted to the cause. Having decided that the practical problems of working on her in a boatyard a considerable distance from their home in mid-Devon compounded the difficulty of the project they decided on the bold step of transporting her lock, stock and barrel to Winkleigh, about 30 miles from the sea, where the local community now seem to be taking her to their heart. Of



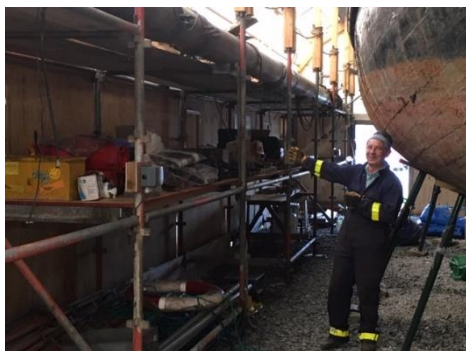
course a Devon field may be a picturesque setting for her, but serious restoration work on a boat of this size and complexity requires a wealth of facilities and a suitably protected working environment, which Sam and a growing team of volunteers, drawn from the local population and the many friends and admirers of Britannia they have accumulated over the years, have set about constructing over the last few months, so that I renewed my acquaintance with her in a magnificent purpose-built shed which has grown over and around her.

Given the sad state of Britannia herself it was really heartening to see how much has already been achieved in

constructing her temporary home, creating a setting in which similar magic can be worked on the old lady herself. Seeing the shed immediately impressed upon me that these people know what they're doing and are seriously determined to meet this challenge, had I ever doubted this. In the light of what has already been accomplished it is much easier to believe that the damage and neglect of the past 15 years ago can and will be fully reversed.

Despite the lack of superstructure and interior fittings she is still recognisably the same boat that first bewitched me in 1988. She literally has a heart of oak and although much of Sam's painstaking craftsmanship has been stripped from her, her keel, frame, hull and deck are mostly intact and what is there now is largely sound and secure, much irredeemably rotten and damaged timber having been removed before she was moved inland.

Faced with such a task it was great to get stuck in for a few days and do my small bit to move things forward a little. We removed large amounts of accumulated detritus, redundant wiring and pipework from within the old saloon area and remaining cabins, leaving a clearer field of operations for work on actual restoration to begin. We also took delivery of some heavy-duty woodworking machinery from storage elsewhere, ready for its installation in the shed so that serious woodworking activities can commence. Best of all we manhandled a stack of huge pieces of sawn mahogany into safe storage in the shed to provide the wherewithal for eventual refitting of Britannia's interior to the standard that old friends of hers will remember from her heyday providing unforgettable sailing holidays amid some of Britain's most beautiful land- and seascapes.



None of this is going to be quick or easy, and a lot more financial and practical help will be needed in the next few years before the dream of returning her to the sea in A1 condition can be realised. I left with the firm conviction that Sam & Vicki's new vision for their old friend is realistic and achievable and I cannot wait to have the opportunity to give another helping hand to the work and to admire the

further progress I expect to see when I'm next able to visit. Meanwhile if it's crossed your mind to lend a hand, do it! I could not have been made more welcome and it's hard to think of a more satisfying and rewarding way of spending a few days than by rolling up your sleeves and getting stuck in."

If you want to know more, please phone Vicki or Sam on 01837 682895, or email vickisamuels@yahoo.co.uk.

News from Winkleigh Allotments

Despite the springtime "Beast from the East", and then the long summer spell of hot dry weather, the Winkleigh Growers allotment holders have, by and large, had a good season for most of their fruit and vegetables. Next May (2019) will mark the tenth anniversary since the establishment of the allotments by the Winkleigh War Memorial Recreation Field Committee. Holders consider themselves fortunate indeed to have such a lovely setting in which to grow their produce.

Due to a holder's removal away from Winkleigh a full plot has become available - £60.00 per annum payable at the beginning of the New Year. There is also one half-plot available at £30.00. If you are interested in either of these or would like more information about the allotments - talk to the Secretary, Pam Berry, on 01837 680193.

John Williams

Many Thanks.....

.....to all those who came to the **MacMillan Cancer coffee morning** on September 19th at Orchard Cottage, Wembworthy, which helped to raise **£505.93**.

Also, thank you to "**Wright & Proper**" for displaying a Poster and their donation of cakes.

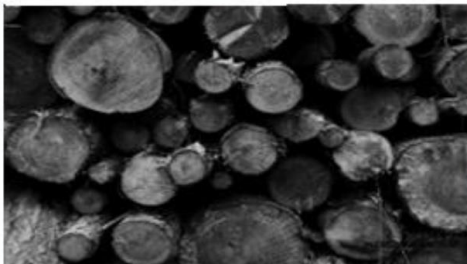
Special thanks to Jackie who helped with the organization and assistance with serving the tea, coffee and cakes, with the valuable help of Irene and Jill.

Thanks as well to all those folk who bought raffle tickets and gave donations even though they could not attend.

Finally thank you ALL for CARING.

Brenda Churcher

Local Logs



Dry seasoned hardwood

All stored under cover & delivered in
Chulmleigh & surrounding area.

Truck Load	£80
Double Load	£160
Trailer Load	£270
Net of Logs	£4
Net of Kindling	£4.50

Martin 07817 464420 parish@btinternet.com
www.mpcontracts.co.uk

Bondleigh Barn Band Wedding

When Laura, who plays in the Brass section of the Bondleigh Barn Band, asked the Band to play the music at her Wedding to Scott on the 4th August 2018 at Winkleigh Church, the whole Band were agog with sheer delight at the prospect at playing at such an auspicious occasion.

We spent months with our Maestro, Richard Edwards, taking us through the wonderful Wedding March by Mendelssohn and the Hymns and when the Special Day arrived with beautiful sunshine, all 35 musicians attired themselves in very appropriate clothes for the occasion and it was a very special and magical moment for us all.

Thank you, Laura & Scott, for giving us the honour of playing at YOUR Special Day which none of us will ever forget.

The photographs show Laura and her Father arriving at Church on a Tandem Bicycle, the Bride & Groom and the Bondleigh Barn Band in Church.

Jennifer GILL (Social Secretary of the Bondleigh Barn Band)



Welcome to Happy Days Cleaning Services

- *Over 40 years cleaning experience*
- *All aspects of domestic work can be done*
- *Very competitive and negotiable rates*

We pride ourselves on giving the best attention at all times

If you are interested in our services please call 07428 719470
and Deb or Alan will return your call as soon as possible



FESTIVE TRACTOR AND CAROLS

Wednesday, 19 December 2018

(organised by Winkleigh Methodist Church)

Details about stops and times will be advertised on our notice board and on Facebook nearer the time

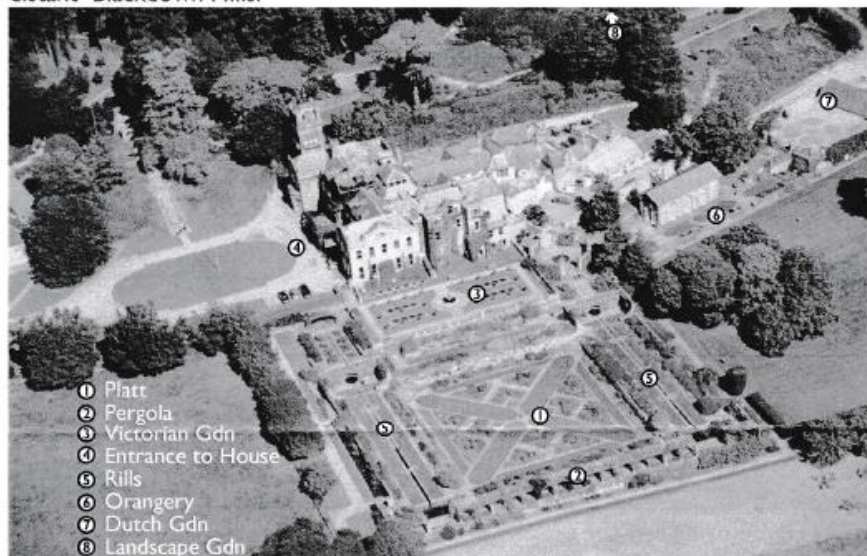


As last year, we will not be door-to-door collecting but would appreciate you coming over and giving your donation to one of the carol singers. We would love you come along and follow the tractor and join in with the carols.

**All funds raised will be for
Pancreatic Cancer UK**

PARADISE RESTORED HESTERCOMBE GARDENS

HESTERCOMBE, just over the County boundary in Somerset, is a 16cent. House and Estate, the house is Grade II and the estate Grade I. Sitting on the high ground of the Quantock Hills, the first designated Area of Outstanding Natural Beauty in England (1956), overlooking southwards, the Vale and Town of Taunton and beyond to the distant Blackdown Hills.



Hestercombe was owned by Glastonbury Abbey in the 14cent. Then passed on through various families by marriage to John Bamfylde, and on his death to his son Copplestone Warre Bamfylde in 1750. It was this family that created the Landscape garden with its woodland walks, ponds and garden buildings.

The next owner to acquire the estate was Edward Portman in 1873. He refronted the house and enlarged it in 1875 and added a formal Victorian parterre to the south side of the house. In 1904 Portman employed Gertrude Jekyll and Edwin Lutyens to design a new garden to the south of the parterre. They were two of the leading members of the 'Arts & Crafts Movement' collaborating on many garden projects. Hestercombe came to be regarded as the finest of their partnerships.



Hestercombe House, West Front

The main interest of the Edwardian garden is the 'Great Plat' a patterned feature of a parterre with Jekyll planting in all the sections. A series of garden dry stone walls, paving and steps on the south of the house. Either side of the Plat there are raised terraces with rills (water channels) fed by water from fountain heads set in the walls to drain into small basins below the rose arbour which runs across the whole of the Plat's southern border. To the east of the garden an area is laid out as a Dutch garden and in 1909 Lutyens designed an Orangery next to it. This has since been listed as a Grade I structure, known as one of his finest garden buildings. The garden is used by Lesser Horseshoe bats, one of the largest roost sights in the south west of England and has been designated an area of Special Conservation.



Grade I Orangery by Lutyens

During the second world war the American army and some British units used the house as H.Q.'s for various uses. After the invasion of Europe in 1944 the house and gardens became a US Hospital Centre until the end of the war. Dozens of huts were demolished in the 1960s. The house remained the property of the Portman family until 1944 when it was accepted by the Crown Estates for death duties. It was leased to the Somerset fire service in 1953. Remained a Call Centre for the Fire & Rescue Service until 2013 when it was purchased by the Hestercombe Trust for £1.

Philip White was a local dairy farmer, who during the 1980s was a member of the Somerset Wildlife Society and through them learnt about the overgrown gardens at Hestercombe. He realised that under the brambles and woodlands in the valley were the remains of the 18cent Landscape gardens, complete with lakes: cascades: garden buildings: and stunning vistas. It already had a Grade I formal Edwardian garden designed by Jekyll and Lutyens. Which was restored in the 1970s. He approached the Crown Estates to enquire if or when they were going to restore the gardens. They were not in the least interested in any such proposition. White decided that if nobody was interested in doing anything about the gardens he would take it on himself! So in 1992 he sold his dairy herd and mortgaged his farm and house to raise £50,000 to fund the beginning of the project. He secured a grant from the Countryside Commission in 1993 to survey the site and brandishing a watercolour painting of the original gardens executed by the creator Copplestone Warre Bamfylde he was able to start revealing garden structures, the Mausoleum and Temple were rebuilt and the Cascade made to flow again. In its first year of opening 30,000 visitors came to admire the progress being made.



Philip White MBE

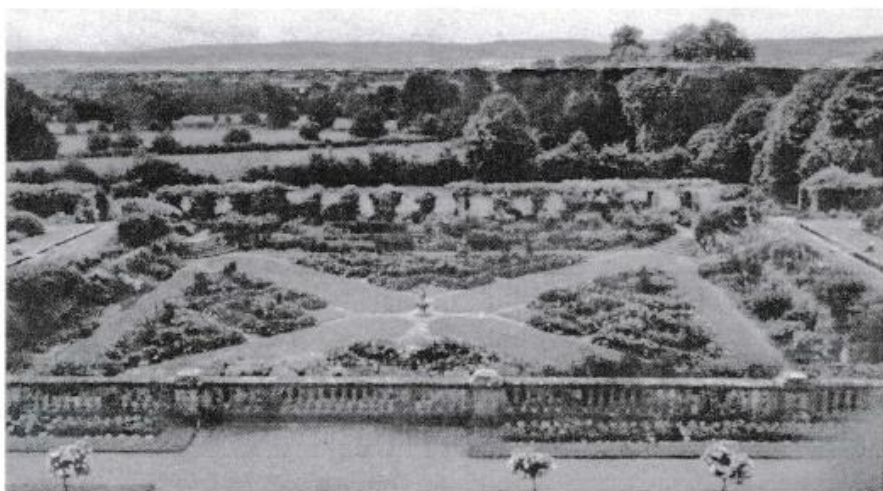


The Temple Arbor

barn complex, with ongoing work in the Edwardian Garden and Victorian Shrubbery. Enabling visitors to explore three centuries of garden history on one site. The recent exciting project was a gift of £97,900 in 2016 from Somerset County Council to allow the house to become a centre for culture with several uses. Courses for Landscape Studies; secondhand bookshop; art gallery; and restaurant. The Guildhall School of Music and Drama have made its HQ here for the South West to encourage young musicians. The Trust are now researching the possibility that an Elizabethan water garden is to be found near the house.

10 years on a Heritage lottery grant of 3-7 millions up front of 4-9 millions estimated cost of the next restoration stages to develop the coach house and stables into a modern visitor centre and with more work on the landscape and formal gardens.

A 1-6 millions project to restore the 18cent mill and



View from the Victorian Terrace to the Blackdown Hills

So, after 20 years Philip White MBE (2013), now CEO of the Hestercombe Trust, is on his way to making Hestercombe one of the top gardens and tourist destinations in England. A great service to the local area in employment and economic development. A benefit to the future generations and a wonderful experience to be able, once again, to enjoy these unique gardens in the West Country. Just over the border in Somerset!

Submitted by John Flower

1st Dolton and Winkleigh Beaver Scouts

This is the last time I will be writing about the Beavers as I am bowing out. I leave it in a healthy state with 18 beaver scouts and a new leader in the wings. **We still need a new adult** who will help every Tuesday so come on someone who wants to enjoy the company of well-behaved children between the ages of 6 to 8 years of age for an hour and a half. **WE NEED YOU.**

We will be having our last sleepover of the year in December and I must say my back will be pleased about this! The children who attend these events really love them and it is a time for the adults to get to know the Beavers better, especially after little sleep! We have covered, or will cover, many subjects this term, **First Aid, Bell Ringing, Aboriginal Art, Remembrance, the Japanese festival of Shichigosan**, and lots more and of course our **Night Walk** will be coming up soon. When you walk Winkleigh Woods in pitch black it is a scary place which they love!!! We also take part in lots and lots of games; these are great fun but for Beavers they provide cognitive, physical and social development, in fact these games help children with a rich opportunities to grow, learn and develop.

As my final article I would like to thank the following leaders who have helped me over the last 6 years, Sarah, Ron, Ashleigh, Vanessa and Christina. To all the beaver scouts and parents who have turned up every week no matter where we were and to all those people who have turned up and shared their knowledge with us all, a big thank you.

I leave as a happy Ahmeek.



Twixtmoors
~upcyclers~

01837 83148

www.twixtmoors.com

info@twixtmoors.com

Unit 2, The Airfield, Winkleigh, EX19 8DW

Official Autentico Paint Stockist
Over 150 different colours available



Do it yourself

Upcycle your furniture, kitchen units and garden ornaments
for a fraction of the price of buying new
Whatever it is made of

there is a paint in our range that will transform it

.... or we can do it for you

Word Search

Y	L	S	N	O	W	M	A	N	B	A	G	A	N	T
M	R	T	G	F	D	D	N	A	L	P	A	L	A	S
I	S	T	E	O	T	E	L	T	S	I	M	B	S	E
N	T	K	E	P	B	L	X	O	H	R	X	D	L	E
C	H	X	K	Y	O	M	C	E	E	F	W	H	O	A
E	G	V	Y	O	P	L	Q	K	V	C	Q	O	R	D
P	I	F	N	X	I	L	S	A	X	T	O	C	A	J
I	L	S	C	H	R	I	S	T	M	A	S	O	C	U
E	I	H	S	P	B	H	W	O	E	L	D	N	A	C
S	O	F	W	U	K	O	J	R	A	E	Y	W	E	N
R	L	L	Y	D	X	L	W	V	N	Q	T	F	B	D
T	R	L	D	D	H	L	C	S	X	L	J	V	D	I
R	R	T	F	I	B	Y	A	Y	I	N	Z	U	G	P
Z	W	E	S	N	H	W	Y	S	K	A	T	I	N	G
A	D	G	E	G	S	T	N	E	S	E	R	P	O	K

BALLOONS	LAPLAND	PRESENTS
CANDLE	LIGHTS	PUDDING
CAROLS	MINCE PIES	SKATING
CHRISTMAS	MISTLETOE	SNOWMAN
HOLLY	NEW YEAR	TREE

Solution on page 63

WINKLEIGH

07970 963450

INSTALLATION &

**NEW AERIALS &
FREESAT**



Digital Aerial
Installations



TV'S - BT VISION - HUMAX PVR - SET TOP BOX

RE-TUNING SERVICE



AERIALS

0800 0930 625

MAINTENANCE

**CARADON HILL
HUNTSHAW CROSS
STOCKLAND HILL**

Number Puzzle

3					7		1	
	4		5	2				
7		9	4					
1		2						
		7	9		6	8		
						3		7
					9	2		6
				7	4		3	
	6		2					4

Solution on page 63

Robinson Plant Ltd

www.robinsonplant.co.uk

A family firm with over 30 years experience

All aspects of earthworks, groundworks and hard landscaping
undertaken including:

Site Excavation and Concreting

Foundations and Driveways

Sewers, Septic Tanks and Treatment Plants

Stone Walling and Paving

Land Drainage and Ponds & Lakes

Riding Arenas and Gallops

Office: 01837 89065 Mobile: 07909 998945

Email: info@robinsonplant.co.uk

Heating, Cooking & Living.

- Stoves • Range Cookers & Cookware • Renewables
- Flues & Chimneys • Spares & Accessories • Logs



We have one of the largest selections of stoves, range cookers, renewables, spares, accessories, flues and chimneys in the UK. Our knowledgeable and experienced staff are just a 'phone call away or why not visit our showroom just outside Winkleigh?

OPEN MONDAY TO SATURDAY, 9AM - 5PM.

Telephone 01837 680068

www.rangemoors.co.uk



Community Dog Wardens Wanted

Torridge District Council (TDC) currently only has 3 neighbourhood enforcement wardens who cover everything from noise nuisance, anti-social behaviour, fly tipping to dog fouling. Information/intelligence is required on who is allowing dogs to foul and not clean up after them, when and where and an enforcement team will come out and patrol at those times and deal with any offences they observe.

TDC is looking to pilot/roll out a **Dog Warden Authorisation Scheme** with any town or parish council.

TDC can authorise non-TDC staff to administer fixed penalties for dog fouling and other dog offences covered by their Public Space Protection Order for dogs.

The **fixed penalty for dog offences is £100 (£60 if paid within 10 days)**.

TDC will share any income from the scheme with Town/Parish council where the penalty was issued. There is no expectation that the scheme will become self-funding and TDC will not support any quota for fixed penalty notices served.

TDC will assist any Town or Parish Council to set up local agreements, help with recruitment and training of potential wardens and/or volunteers, health and safety, fixed penalty procedures and all associated matters. The training is approximately ½ day duration.

Councillors are not permitted to act as Wardens in their own parish due to conflict of interests.

A volunteer would patrol with an enforcement warden but will not be authorised to issue a fixed penalty, or may patrol on their own in order to gather information/intelligence to pass on to an authorised warden. Any complaints of dog fouling TDC receive will be forwarded to the Clerk so they can direct their dog warden.

There is considerable outlay by TDC in setting up and supporting the scheme; however the potential benefits of this in terms of local warden provision and enforcement is considerable. The scheme should be seen as partnership working between TDC and Town/Parish Councils to try to tackle issues of significant concern within our communities. The pilot will be key to clarifying details of the scheme.

Any person interested in becoming a community dog warden or volunteer should contact **Janet Williams** Environmental Health and Community Safety Manager,

Torridge District Council Riverbank House, Bideford EX39 2QG

Tel 01237 428857, Email janet.williams@torridge.gov.uk

Web: www.torridge.gov.uk

Puzzle Solutions

3	5	6	8	9	7	4	1	2
8	4	1	5	2	3	7	6	9
7	2	9	4	6	1	5	8	3
1	9	2	7	3	8	6	4	5
5	3	7	9	4	6	8	2	1
6	8	4	1	5	2	3	9	7
4	7	8	3	1	9	2	5	6
2	1	5	6	7	4	9	3	8
9	6	3	2	8	5	1	7	4

Y	L	S	N	O	W	M	A	N	B	A	G	A	N	T
M	R	T	G	F	D	D	N	A	L	P	A	L	A	S
I	S	T	E	O	T	E	L	T	S	I	M	B	S	E
N	T	K	E	P	B	L	X	O	H	R	X	D	L	E
C	H	X	K	Y	O	M	C	E	E	F	W	H	O	A
E	G	V	Y	O	P	L	Q	K	V	C	Q	O	R	D
P	I	F	N	X	I	L	S	A	X	T	O	C	A	J
I	L	S	C	H	R	I	S	T	M	A	S	O	C	U
E	I	H	S	P	B	H	W	O	E	L	D	N	A	C
S	O	F	W	U	K	O	J	R	A	E	Y	W	E	N
R	L	L	Y	D	X	L	W	V	N	Q	T	F	B	D
T	R	L	D	D	H	L	C	S	X	L	J	V	D	I
R	R	T	F	I	B	Y	A	Y	I	N	Z	U	G	P
Z	W	E	S	N	H	W	Y	S	K	A	T	I	N	G
A	D	G	E	G	S	T	N	E	S	E	R	P	O	K

What's On Diary – 2018-2019

Please send details of your events to articles@distinctlywinkleigh.co.uk

Please also note that regularly occurring events are not usually listed here

December	
2 nd at 2.30 pm	Advent Carols by Candlelight, Brushford Church
2 nd afternoon	Advent Party Tea Service, Methodist Church – p 39
5 th from 10.30 – 12 noon	Christingle Toddlers Session – Methodist Chapel – p 39
5 th & 19 th - 2 pm - 4 pm	Forget-Me-Not Friends, Community Centre
8 th evening - TBA	Winkleigh Fair – Christmas Market + Switch-on of Lights – The Square (see boards for details) – p 45
11 th at 7 pm	“Calling All Carol Singers” –Methodist Chapel p 39
12 th – 9.15 – 11.15 am	Forget-Me-Not Advice Surgery, Community Centre
13 th at 6.30 pm	Carols in the King's Arms – p 26
13 th at 7.30 pm	Hatherleigh Silver Band Christmas Concert – Village Hall – p 44
15 th at 7.30 pm	Traditional Christmas Concert – Winkleigh Singers, All Saints, Winkleigh – p 7
16 th at 4 pm	Carols by Candlelight, Ashreigney Church
18 th	Seven Stars 10 th Anniversary Party
19 th evening	Tractor Carol Singing, Winkleigh Village – p 39 & 54
23 rd at 9.30 am	Joint Mission Community Eucharist, All Saints Church
23 rd at 5 pm	Carols In the Barn, Beachlea – p 30 & 39
24 th at 3 pm	Crib Service, Broadwoodkelly Church
24 th at 5 pm	Crib Service, All Saints, Winkleigh
24 th at 11.45 pm	Midnight Mass, All Saints, Winkleigh – p 41
25 th at 9.30 am	Eucharist, All Saints, Winkleigh p 41
25 th at 11 am	Family Eucharist, Ashreigney Church

25 th at 10.30 am	Christmas Morning Service – Methodist Chapel p 39
30 th at 11 am	Joint Mission Community Eucharist, Broadwoodkelly Church
January 2019	
<i>Date to be arranged</i>	Winkleigh Fair Cinema Evening – Village Hall – p 45
2nd & 16 th - 2 pm - 4 pm	Forget-Me-Not Friends, Community Centre
9 th – 9.15 – 11.15 am	Forget-Me-Not Advice Surgery, Community Centre
February	
<i>Date to be arranged</i>	The AGM of The Winkleigh Society
6 th & 20 th - 2 pm - 4 pm	Forget-Me-Not Friends, Community Centre
13 th – 9.15 – 11.15 am	Forget-Me-Not Advice Surgery, Community Centre
March	
6 th & 20 th - 2 pm - 4 pm	Forget-Me-Not Friends, Community Centre
13 th – 9.15 – 11.15 am	Forget-Me-Not Advice Surgery, Community Centre

All dates & details are believed to be correct at the time of going to press.

See www.winkleighonline.co.uk for updates between editions

‘Old Man’s Seat’ Lives On!



Photograph by Philip Griffiths on 12th November

And Finally

After a couple of late cold snaps followed by a fine summer and autumn, we now wait to see what this winter will bring to Winkleigh. Most village events have been very successful, not rained off, and their organisers well satisfied with their efforts.

Distinctly Winkleigh has continued to flourish, thanks to the many and varied **articles** you have submitted during the year for which we thank you, as well as the **adverts**, without which we would not be able to continue. Also we must not forget our **team of distributors** and their efforts to make sure everyone in the parish receives their copy come rain or shine.

Please keep sending in your contributions to articles@distinctlywinkleigh.co.uk and do let us have your feedback on what we are doing – good or bad; we would also welcome contributions from our younger readers. We are relying on you all!

Don't forget the **deadlines** for the **Spring 2019** Edition are **Friday 1st February** for **adverts** and **Friday 8th February** for **articles**. Submission details are on the back cover of each edition together with advertising costs.

Finally it only remains to wish all our readers, contributors and helpers -

A Very Merry Christmas and a Happy New Year

Amy Pincombe FHP Dip
Foot Health Practitioner
Mobile Service
07712 148038



Caring for your feet

- Corns
- Callus
- Cracked Heels
- Fungal infections
- Ingrown toe nails
- Manicures & pedicures
- Verrucae

JOSH NOON TREE SERVICES

**Fully qualified and
insured tree surgeon.**

**All aspects of tree,
hedge and fence work.
Quality firewood and
woodchip.**

**Friendly,
reliable
and tidy**



☎ 01363 83863
📱 07792 906258



John Short

Professional Interior & Exterior
Painting and Decorating

Clotworthy House, Torrington Road,
Winkleigh, Devon, EX19 8HR

Telephone: 01837 83709

W.D & S.J CARNE



*Independent Family Owned
Funeral Directors*



Established over 60 years
Personal Attention Day and Night

Carney Cottage, Winkleigh, Devon, EX19 8HX

Email: wdandsjcarne@gmail.com

Tel: 01837 680199/83387

Pre-paid and Bespoke Funeral Plans Available

DISTINCTLY WINKLEIGH - PUBLICATION INFORMATION

This newsletter is published quarterly by the Winkleigh Society at the end of February, May, August and November and distributed free to households in Winkleigh Parish.

All information is correct at the time of going to press. The views expressed in submitted material are not necessarily those of the newsletter team or the Winkleigh Society.

All our readers are most welcome to send in Articles (or reports, letters, drawings, etc.) which are likely to be of interest to the local community.

Please note that articles may be subject to editing, primarily for space or layout reasons.

Articles can be emailed to articles@distinctlywinkleigh.co.uk, or sent to the Editor.

The deadline for articles is the second Friday of each publication month.

Advertisements from businesses in the local area are also welcome.

Adverts should be emailed to adverts@distinctlywinkleigh.co.uk, or sent to the Editor.

The deadline for advertisements is the first Friday of each publication month.

ADVERTISING RATES

	Quarter Page	Half Page	Full Page
1 edition	£12.50	£25.00	£50.00
2 editions	£25.00	£50.00	£100.00
3 editions	£37.50	£75.00	£150.00
4 editions	£50.00	£100.00	£200.00

All contributions to the newsletter can be accepted in printed form, CD, memory stick, or as email attachments in WORD, PDF, PNG or JPEG file formats.

EDITOR

Godfrey Rhodes, 32 Westcots Drive, Winkleigh EX19 8JP - Tel: 01837 682982

WINKLEIGH SOCIETY COMMITTEE MEMBERS

<i>Chair</i>	Penny Griffiths	01837 83407
<i>Vice Chair</i>	Margaret Miller	01837 83398
<i>Hon. Treasurer</i>	Alan Mulcahy	01837 680145
<i>Hon. Secretary</i>	Philip Griffiths	01837 83407
<i>Committee Members:</i>	Alan Jacobs	Barbara Jenkins
	Royston Naylor	Godfrey Rhodes
	Wendy Oxborough	

Winkleigh Society membership is open to all Winkleigh parish residents, who may freely attend and vote at meetings. Further information about the Society and what is going on in Winkleigh can be accessed online at: <http://www.winkleighonline.com>

HEDGEROW PRINT, CREDITON, DEVON EX17 1ES: 01363 777595