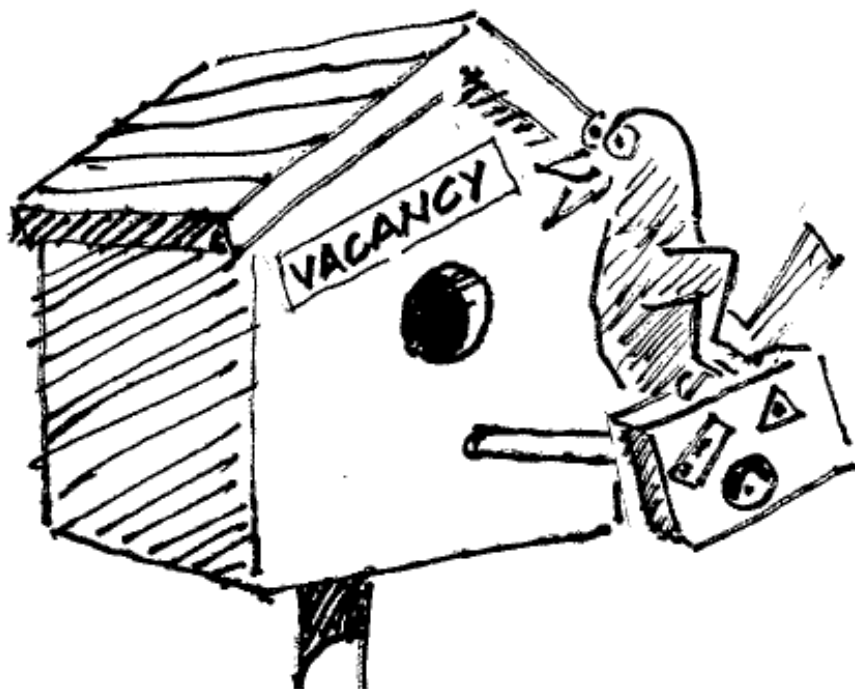


# DISTINCTLY WINKLEIGH



Working for Winkleigh



□

Edition 69

Spring 2019

*Cover sponsored by  
Ian Shacklock, MTF Training, Moortown Farm, Winkleigh. 01837 83325*

---

**The Winkleigh Society Quarterly Journal**

## Clotworthy House



Let us help you take the stress out of family or friends coming to visit. Clotworthy, a period Georgian house close to the village centre, offers 4\* Gold Award accommodation.

All rooms are large and with good views, and all have en suite facilities with free standing baths or showers.

Give us a ring for availability or send us an e-mail.

## **Clotworthy House Bed & Breakfast**

**Torrington Road, Winkleigh, Devon EX19 8HR**

**Telephone Susan or John Short: 01837 83709**

Email: [enquiries@clotworthyhouse.co.uk](mailto:enquiries@clotworthyhouse.co.uk)

Web: [www.clotworthyhouse.co.uk](http://www.clotworthyhouse.co.uk)



**Local Family Run Residential  
Sales & Lettings Agent**

**Call us for a FREE  
no-obligation Valuation of your Property.**

**01837 83393**

**[info@howesestates.co.uk](mailto:info@howesestates.co.uk)   [www.howesestates.co.uk](http://www.howesestates.co.uk)**

**Sell your property from 0% and no upfront fees\***

\*terms and conditions apply

## Winkleigh Neighbourhood Watch

As you all know our intention is to keep you all up to date with the crime figures in Winkleigh; these are posted monthly in various places around the village. We have noticed that there has been a significant reduction in actual crimes over the last few months; only 2 actual crimes for January 2019. Let's hope that it continues for the rest of 2019.

Not only crime, but also safety is part of our remit and so we thought in this issue of the DW we would bring up a contentious subject. We know that in the village the roads are not that wide which has meant that parking is a problem. Therefore we are asking you all to think before you park your vehicle/s. Please use your driveways and garages (if you have them), try not to obstruct corners, junctions and pavements. If in doubt The Highway Code has advice, check rules 242 and 243. Please remember Emergency, Refuse and Recycling vehicles are very wide and must be able use our roads unimpeded.

Recently there have been articles on TV about FLY TIPPING and the impact on our countryside. It looks bad and encourages vermin. So if anyone knows or sees the person who is regularly leaving bags of rubbish by the Litter bin at the junction of Torrington Road and Barnstaple Street please make a note and report them. Once one person starts fly tipping it encourages others to do the same.

Our Neighbourhood Watch alert system has continued to advise us of the scams and fraudulent activities in Devon. You must all take care when answering phones, using social media and any other types of modern electronic items. Never give away your Bank details to strangers over the phone. Hacking of bank accounts and of Social Media, i.e. Facebook, etc., recently seems to be an even more common occurrence.

Again we urge you all to carry on being neighbourly and vigilant. Please report any suspicious activity to the police on either 101 (for non-life threatening or non- urgent incidents) or 999 (for urgent incidents and ones where a response is required ASAP); this will depend on the severity of the incident.

### **"KEEP 'EM PEELED"**

**COVERING ALL EXCAVATIONS AND GROUNDWORKS  
BOTH LARGE AND SMALL PROJECTS AT COMPETITIVE PRICES**



**FULLY INSURED  
HEDGE-TRIMMING FLAIL &  
CIRCULAR SAW  
FIREWOOD PROCESSING  
CALL MARTIN ON 07817464420  
EMAIL: [PARISH@BTINTERNET.COM](mailto:PARISH@BTINTERNET.COM)  
[WWW.MPCONTRACTS.CO.UK](http://WWW.MPCONTRACTS.CO.UK)  
FACEBOOK: MARTIN PARISH  
CONTRACTING**

## Winkleigh Society Update



Welcome to our 3 new members to the delivery team of *Distinctly Winkleigh*: Linda Popham, David Trenaman & Philip Griffiths. We are very pleased that they have joined the rest of the eighteen invaluable “postmen/women” and were able to attend our “thank you tea & cake” held at Fiona's Farm Shop last November.

### Visit to North Devon Record Office in Barnstaple

Three members of the Winkleigh Society Committee attended the Open Day last November when we were able to view the incredible range of archive material for Winkleigh and Hollocombe: Church records in Latin dating back to Elizabeth 1, Parish registers of births, marriages, burials from 1569, ancient maps, militia records, bastardy and poor relief orders and much, much more. The archivists are knowledgeable and eager to publicise their work and to keep the archive based in Barnstaple, we hope to invite them to one of our flagship events. **As a result of the visit The Winkleigh Society has agreed to donate £50 a year for the next three years** to mark our appreciation for all the sterling work they do for our community and North Devon.

### March: Saturday Market in the Village Hall (2<sup>nd</sup> March)

We will be running the cafe on behalf of the Society and Distinctly Winkleigh. Hope to see you there!

Penny Griffiths & Margaret Miller



# TEN ACRES VINEYARD

*Wine shop & camping open 1<sup>st</sup> May- 30<sup>th</sup> Sept*

 10am-8pm Closed Wed. 

At weekends, free tastings and wine for sale by the glass.

[www.tenacresvineyardcamping.co.uk](http://www.tenacresvineyardcamping.co.uk) or (01837) 83892

## Biodiversity and Wildlife in the Parish of Winkleigh

Devon hedges shape and define the character of the Devon countryside: they are an asset for the future and underpin the cultural landscape. Two-thirds of Devon's hedge-banks are of medieval origin. A true Devon hedge has at its centre a substantial earth bank together with shrubs and trees growing on top of it.

Devon hedges were constructed for agricultural purposes as they provide an effective stock-proof barrier and shelter for animals and crops. They provide a wide range of benefits to society including improving crop pollination, purifying stream water, controlling soil erosion and reducing flooding. Over 2,000 species of plants, fungi and animals have been identified from one single Devon hedge alone and many endangered animals are associated with Devon hedges, including greater horseshoe bats, ciril buntings, hazel dormice and brown hairstreak butterflies.



A special feature of the Parish of Winkleigh, including Hollocombe, is its wide range of wildlife, flora and fauna. A biodiversity survey conducted by Devon Wildlife Trust in 2017 identified 72 legally protected and notable species within the Parish, ranging from more common mammals such as bats, dormice and otters, to rarer creatures such as hedgehogs, willow-tits, and hares.

### Findings of the Winkleigh Hedgerow Assessment

Most of hedgerows assessed by Devon Wildlife Consultants were found to contain a diverse species mix including sessile oak, hawthorn, ash, blackthorn, wild cherry, guelder rose, holly, hazel, gorse and spindle. Some hedgerows form field boundaries and contain many of these species plus goat willow, elder and elm. By counting the number of species within a section of hedgerow it is possible to date accurately its age; some in Hollocombe are over 1000 years old.

One example of ancient hedge-banks can be found on Shute Lane where two parallel hedgerows run adjacent to this ancient track. Mature trees, mostly ash and sycamore dominate the hedgerow, although hazel, elm, holly, beech, blackthorn and hawthorn are present.

### Summary

In accordance with the landscape and wildlife criteria of the Hedgerow Regulations (1997) of all the hedgerows assessed in Winkleigh, most of them are defined as

“important” and therefore protected from damage or removal except by permission of the Local Planning Authority.

The Winkleigh Neighbourhood Plan seeks to protect existing environmental assets such as hedgerows from development damage, but also to link sites together to improve their viability and to protect vital linkages between sites, helping birds and mammals to navigate around the countryside. Hedgerows are a distinguishing characteristic of the local landscape and play an important role in providing habitat for species including bats, birds, reptiles, insects and mammals.

The wildlife found in hedgerows and banks including dormice, badgers, reptiles and nesting birds all have strict protection under the Wildlife & Countryside Act 1981 which makes it illegal to intentionally or recklessly damage, destroy or obstruct their place of shelter or protection.

### References

Winkleigh Hedgerow Assessment Report no: 18/3372.01 – Devon Wildlife Consultants.

Devon Hedges – Devon Hedge Group & Devon County Council 2014.



*Sue Dally*



## Storage containers to rent near Winkleigh

*20 foot x 8 foot x 8 foot high*

Long or short term rentals, from £20 per week

For more details please call Julian on 07947 877284

or e-mail [julian.tolley@btinternet.com](mailto:julian.tolley@btinternet.com)

**W H T Letting**

## Our Devon County Councillor Writes ....



It has been another busy few months representing Winkleigh at County Hall. Writing this article in February, this time of year in the Local Government calendar is dominated by Budget setting meetings.

While the final figures are yet to be finalised, at the time of writing the County Council is looking to increase the budgets for Children's Social Services, Adult Social Services and Highways. Children's Services have, in particular, come under pressure this last financial year so the proposal to increase this Budget by

nearly £12 million is welcome.

There are also increases for the Adult Social Care budget and the County Council's Highways Budget will benefit from a Central Government grant of £18.75 million (more on that later).

It is likely though that Devon County Council's share of the Council Tax precept will rise by 3.99% overall – 2.99% for general services and 1% for adult social care. I know that Council Tax increases are not welcome, but this increase will allow the Council to maintain and sustain the vital services that it provides.

I realise when we look at the state of the roads sometimes – and if a bin collection has been missed – we can sometimes wonder 'what am I paying my council tax for?' Often though, it is for services that we may not necessarily see.

Last year I spent some time shadowing our Children's Services Social Workers and I saw them dealing with cases from severe mental health issues, through to neglect, as well as suspected cases of child sexual exploitation. We have over 700 children in care in Devon and we have legal, as well as moral, obligations to support these children.

While I know how frustrating it can be when the pothole in the road you can see doesn't get repaired, we ultimately have a duty of care to our vulnerable children and vulnerable adults first.

I am hoping though that (weather permitting!) there will be fewer potholes on the road over the next year. Following the Chancellor's Autumn Budget announcing more money for road repairs, Devon County Council has been awarded an additional £18.75m for capital investment into our road network. This is over and above the already existing budgets and will be used for resurfacing, patching and surface dressing schemes, along with some investment into the County's bridges. It is likely that a proportion of this funding will be allocated to minor rural roads and you can

be assured that I will lobby as hard as I can for improvements to roads in Winkleigh and throughout Torrington Rural.

Finally, with elections coming up to the Parish Council in May I would like to put on record my thanks to the outgoing Parish Council and wish any councillors standing down well for the future. As a County Councillor representing 18 Parishes, I do rely on the Parish Council to keep me informed as to how the County Council and Highways are performing locally in Winkleigh. I would encourage anyone thinking about putting their name forward to serve on the Council to do so.

It is a real privilege to represent this village and Parish on the County Council and as ever, if I can provide any assistance on a County Council issue please do not hesitate to contact me.

*You can ring me on 07886 446560 or email [andrew.saywell@devon.gov.uk](mailto:andrew.saywell@devon.gov.uk).*

## **Bacon Roll Time Again!!**

**Yes it really is a year since you all came for a good natter, a cup of coffee and a BACON ROLL.**

**What a super morning we all had.**

**Now we can do it all over again for the sixteenth time!**

**So here is it Bacon Roll Time: Friday 12<sup>th</sup> April 9.30 to 12.00**

**The Old Smithy, Exeter Road**

**Who's invited – absolutely everybody**

**All for Cancer Research UK**

**We are looking forward to welcoming you**

*Jan Ovenden*

## **Flute tuition for mature pupils**

Explore and enjoy interesting music whether you are a late beginner, rusty returner, or improver of any standard or age.

Feel a sense of achievement when you master a piece of music, or maybe gain the confidence to play in a band.

Whatever your motivation or standard I can provide a wealth of musical experience, and specialist knowledge of the flute.

**Jacquie Kenny LTCL AMusLCM. Phone: 01837 851793**



## The Winkleigh Singers

The choir and audience enjoyed a warm decorated church for their Christmas Concert in Winkleigh in December and the seasonal music and audience participation was appreciated by all as an uplifting start to the Christmas week.

The next concert is on **Saturday 23rd March in St Michael and All Angels Church, Torrington at 7.30 pm**. This has some interesting and lesser known works and will be a treat for the choir to sing and the audience to enjoy, accompanied by very distinguished soloists. On the programme is Mozart Benedictus sit Deus, Bach Cantata 84, Poulenc Gloria, and Arvo Pärt Littlemore Tractus.

The professional soloists are well known to the choir and will without doubt enchant the audience:

**Donna-Marie Broomfield** is a classically trained soprano and her beautiful voice will take the audience on a thrilling musical journey from the classical through to the more modern works. She is the founder of the West Country Opera Society and a Chamber Choir director and teacher. She has sung in many venues including the Bahrain Grand Prix, La Maison Aux Quatre Saisons, The Eden Project and Powderham Castle to name a few.

**David Davies** grew up in Wales and being drawn to music, he won a 6th form scholarship to Eton College followed by an Organ Scholarship to Oxford. He trained as organist, pianist, and conductor at the Universities of Oxford and Yale. He has held many positions as church and cathedral organists and most recently as Assistant Director of Music at Exeter Cathedral. He is a freelance Classical Musician and Organist to the University of Exeter. His musical career is diverse and in addition to his interest and work in classical music, he writes and lectures on liturgical music and cultural history.

We as a choir are truly fortunate to offer a programme with such eminent soloists and expect the concert to be a sell-out. Tickets at £15 can be purchased from choir members, on line at [www.winkleighsingers.org.uk](http://www.winkleighsingers.org.uk), or on the door. Under-16 free.



*The Winkleigh Singers*

The choir is holding an **Open Rehearsal at its practice venue in Umberleigh on Monday 25th March**. Singers are welcome to attend, particularly tenors and basses! See the website or speak to a choir member and let us know your interest so we know how many to expect.

*Registered Charity Number 117121*

## Parish Church News

They say time flies when you are having fun, well it most certainly does as the new priest-in-charge! It has been a busy but exciting few months since I arrived in Winkleigh. Christmas was understandably a busy time with many services and opportunities to meet people. It was lovely to see so many people come through the doors of All Saints over the Christmas period, to welcome you in and to tell again the most wonderful story of God's gift of his Son to us all. That is alongside the school carol service, the Winkleigh Singers concert, blessing the Christmas tree and carols in the pub.

Despite the recent wild, wet and then most recently snowy weather, we were again blessed with a dry Sunday morning for our Plough Sunday service. Lots of people gathered in the village square - I'm sure the smell of the bacon sandwiches had something to do with it! Again, it was great to see so many people in church, as we blessed the seed, soil and the plough, giving thanks to those who provide for us and to God for his goodness.

As the seasons and the year move on forward, the church's calendar doesn't stop either. We've packed away the tinsel and the crib and now our thoughts turn towards Lent and Easter. We move from the crib to the cross and are invited to journey with Jesus through his temptations, his ministry and towards his crucifixion. Lent is always the season in which competitive 'giving up' occurs. A chance to try again at our failed New Year's resolutions, to be virtuous in our abstinence from chocolate, alcohol, social media or cake! To do this far better than anyone else and to ensure everyone knows about it in the process. But Lent is about a time for self-examination, for growing in faith and for drawing closer to God. The whole point of giving something up is to spend more time and energy on the things that matter. Now, whether you keep Lent in its religious sense or not, it is a good opportunity to refocus our lives. To spend more quality time in conversation rather than on social media, to try and eat more healthily, to think about where our food comes from, to use less plastic or to have a good declutter of our homes. Or use it as an opportunity to explore your relationship with God, to come and see what church or chapel is all about, to ask questions and to be welcomed in.

There is lots going on over the next few months at All Saints. We are delighted to be joining with the Methodist Chapel for the World Day of Prayer on 1<sup>st</sup> March, 6:30 pm at All Saints, and then Pancakes on Shrove Tuesday. We are also running a Lent course together - 'Encountered- meeting God in ordinary places', do come and join us on Tuesdays at 7 pm in the Chapel from 12<sup>th</sup> March and Thursdays at 2 pm at All Saints from 14<sup>th</sup> March. No massive amount of biblical or any other knowledge is needed, there will be refreshments and a chance to explore our own faith through the life of Jesus. All are welcome.

Mothering Sunday is 31<sup>st</sup> March and we will be holding a service on Mothering Sunday at 9:30 am which will be suitable for all ages, with flowers for those who care for us and cake for everybody! Everyone is welcome, even if you've never been to church, haven't been for ages, can't sit still or might fall asleep - we don't mind.

We then follow the events of Holy Week, stand at the foot of the cross on Good Friday and rejoice on Easter Day that our Lord and Saviour is risen. It always seems appropriate that Easter falls as the season changes from the darkness and cold of winter to the warming spring sun, from barren wet earth to the colour of spring flowers. The journey from darkness to light, from despair to hope. Mirrored in the events of Jesus' life, from the darkness of the cross to the glory of Easter Day. Mirrored in our own lives, through earthly struggles and dark times, sustained by the hope of eternal life.

Journey with us, this Lent and Easter season and experience that joy and hope for yourselves.

*Helen King - 01837 83710  
revhelenking@outlook.com*

Find us on Facebook 'Winkleigh Mission Community'

*[Editor's Note -Please see 'What's On' Diary for List of Church & Chapel Events]*

## Church Notes

**Organist needed.** Winkleigh Church has an excellent organ as well as a harmonium and a piano. We would love to hear from anyone who can play on an occasional Sunday morning for the 9.30 service and maybe on other occasions as well. For further details please contact the Vicar on 83710.

**Foodbank.** The Church has been a collection point for Okehampton Foodbank over Christmas and we intend to extend this to a year round collection. There will now be a permanent box for food in the Church along with information on what is particularly needed by the food bank. Why not add one item a week to your food shop and leave it in Church to help those in need?

**Suicide Intervention Toolkit.** A copy of this file is now available in the Brook Room (the Sunday School/meeting room opposite the Church door at the top of Church Steps). This resource has leaflets and information to help those who are contemplating suicide or those who know of someone who feels that way.

It has materials aimed at all age groups and advice on what to do in an acute situation. The Parish Council has also published this information on line. **If anyone needs to consult this file please contact the Vicar on 83710, Sue Ware on 83526 or either of the Churchwardens, Sylvia Smith on 83132 or Marjorie Bowers on 83585. Access is also available at service times.**

## Winkleigh Church Wives Group

The Winkleigh Church Wives Group would like to say a big Thank You to all those who supported our **Autumn Fair**. At the end of the day we were able to send a cheque for £500 to North Devon Hospice. Also, a big Thank You to all the members who make it possible to hold this event.

We began the year in **September** with a service in Church followed by a meeting in the Village Hall.

In **October**, we learned all about the art of Chocolate Making. This demonstration was by Nicola Brooks who lives locally. It was an afternoon of great fun, even if at times we became a bit messy with trying to “finish off” the chocolates.

**November** saw us have John Dike to talk to us about Shackleton and his “Endeavour Expedition”. It was a most interesting afternoon, and we were able to learn a lot about Shackleton himself and the members of his crew, who all made it safely back to England, but not before enduring many hardships.

**December** saw us enjoy a Social afternoon with a Quiz, chatter and refreshments.

We have just enjoyed our annual **January Lunch** at the Libbation Golf Club.

We have a busy programme of meetings to look forward to in 2019:

On **Monday February 11<sup>th</sup>** we had John Smith to talk to us about how our food arrives “Farm to Fork”.

**March. 11<sup>th</sup>** - Hats and Fascinators with Rachael Dunn.

**April 8<sup>th</sup>** we will all be going to the Mardi Gras with Ray and Claire Tricker.

In **May** we will be learning how to make our own cards with Annie Christie.

We finish the year in **June** with a service in Church followed by the AGM in the Hall.

All our meetings take place on the second Monday of the month at 2.30 pm in the small rear room of the Village Hall. We welcome visitors to any of our meetings, we look forward to seeing you.

*Janet Magor (sec) 01837 83799*

  
**Claire Derby Psychotherapist**  
New Private Practice – 07841-474398  
Nymet Rowland  
  
❖ Psychotherapy  
❖ Meditation  
❖ Reiki  
❖ Anger Management  
  
[www.clairederbyholistictherapies.co.uk](http://www.clairederbyholistictherapies.co.uk)

## World War One Centenary Cruise




Having travelled round the world for 37 years with HM Forces, visiting and living in many different countries, since retirement in 1993, we have been lucky enough to have enjoyed some less demanding trips with various Cruise Lines. We prefer to sail with Fred Olsen as their ships only cater for adults and usually have less than 1000 passengers on-board – unlike some of these huge blocks of flats, like the *“Symphony of the Seas”*, which can accommodate up to 5000 people!

Having lost relatives from both sides of our families during the First World War, we took advantage of going on Fred’s Centenary Cruise to mark 100 years since the end of the First World War. Ports of call allowed visits to a number of historic battlefields, many of which played pivotal roles in the Great War and we were able to visit their thought-provoking memorials and museums.

Our Ship (the Braemar) sailed from Southampton and so rather than driving down on the morning of departure (and enjoying the possibility of delays, traffic jams and so on) we stayed overnight in Winchester. It was a comfortable hotel, and not only did they look after the car whilst we were away, they also provided us with a taxi service to and from the Port and (the taxi driver having packed our luggage in his car) the next time we saw our cases was outside our cabin on board ship! Following a safety briefing we sailed on 8<sup>th</sup> November 2018 and docked at Boulogne-sur-Mer early next morning.

Boulogne is the closest port to where the “Battle of the Somme” was fought. This was one of the bloodiest of World War One where more than three million men fought (mainly from the trenches) for over 5 months on a 15 mile battle front and where one million men were either wounded or killed making it one of the fiercest conflicts in human history.

 gilbertstephens

## Local legal & financial advice

Call our Crediton office on:

Legal Services **01363 77 55 66**

Financial Services **01363 72 21 11**

Visit [gilbertstephens.co.uk](http://gilbertstephens.co.uk) for more info

Gilbert Stephens LLP is authorised and regulated by the Solicitors Regulation Authority (no: 536070) and Gilbert Stephens Financial Services Limited is authorised and regulated by the Financial Conduct Authority (no: 579899)

**FREE 20mins  
consultation**

Two of Claire's uncles (Corporal Gilbert and Rifleman William Knottley) were both killed during WW1 (aged 23 and 19 respectively) and were laid to rest, 5 miles apart in Thiepval and Cambrai.



**Thiepval Memorial**  
commemorates more  
than 72,000 missing  
British and South  
African servicemen who  
have no known grave

**Cambrai Memorial**  
commemorates over 7000  
missing soldiers British and  
South Africa who died but  
have no known grave

We also took the shuttle bus into Boulogne itself where we visited the castle - an impressive 13th century building with sturdy fortified walls, impressive ramparts, bridge, picturesque moat and a lovely circular courtyard. It also houses a museum with a good collection of Greek, Egyptian cultural items together with some from the Americas. In a separate part of the castle there is an exhibition about Napoleon's plans to invade Britain in 1805 and why these plans didn't work. This was supported by a whole host of extremely funny English cartoons lampooning Napoleon and also portraits of him dressed as famous people from the past - including Greek gods.

From Boulogne we could also visit The Canadian National Vimy Memorial. The gleaming white marble and haunting sculptures of the Vimy Memorial (the main one being "Canada Weeping") stand as a terrible and poignant reminder of the 11,285 Canadian soldiers killed in France who have no known graves.



Our next stop was Ghent, where it is possible to visit Mons, the location of first major action of the British Expeditionary Force (BEF) in the Great War and incidentally, where a Canadian was shot in the chest by a sniper, at 10:58 am – just two minutes before the armistice went into effect!

The main reason for the whole of this trip, however, was to visit the area where Ray's father fought during WWI, i.e. at Ypres and Passchendaele.

Leslie Norman Tricker (1898-1947) served as an officer with The Honourable Artillery Company in one of the second-line horse drawn artillery batteries. In Sept 1917 he was injured near St Julien which is about 4 miles from Ypres. We don't know for certain but can remember Ray's Mother saying that he had been half-gassed – which makes sense as that was about the time the Germans first used mustard gas.

Nevertheless, he managed to recover sufficiently to serve in the Ypres area until the end of the war in 1918.



Our visit to Ypres was, therefore, very special to us and so we took full advantage of attending the Last Post Ceremony at the Menin Gate on the 11<sup>th</sup> Nov 2018 – exactly 100 years after WW1 ended.

# Marshalls

## ELECTRICAL CONTRACTORS LTD

WINKLEIGH & MORETONHAMPSTEAD

CALL US ON 07970705471 or Find us on Facebook

*'Working to keep you connected'*

<p>◦ INDUSTRIAL</p> <ul style="list-style-type: none"> <li>◦ New Builds / Extensions / Refurbishments</li> <li>◦ Security Lighting / Emergency Lighting</li> <li>◦ NICEIC Inspection &amp; Testing</li> <li>◦ Full Design Service</li> <li>◦ Low Energy LED Lighting</li> <li>◦ Freeview TV Aerials</li> </ul>	<p>◦ COMMERCIAL</p> <ul style="list-style-type: none"> <li>◦ Extra Sockets to Full Re-wires</li> <li>◦ Phone and Data</li> <li>◦ Portable Appliance Testing</li> <li>◦ Electric Heating</li> <li>◦ Fire Alarms</li> <li>◦ Consumer Unit Upgrades</li> <li>◦ Freesat Installation</li> </ul>	<p>◦ DOMESTIC INSTALLATIONS</p>
--	---	---------------------------------

APPROVED CONTRACTOR

MEMBER

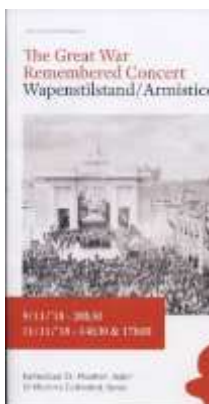
DOMESTIC INSTALLER

www.marshallselectrical.co.uk



However, prior to that, we were fortunate enough to have obtained tickets to a fantastic Great War Remembered Concert in St Maarten's Cathedral. The aim of the Concert was to recall the spirit and atmosphere of the Great War in music, words and images. Mixing, on the one hand, the joy of ending the war and the pain of losses and a completely destroyed city on the other.

The Concert was very moving and the orchestra, band, buglers and soloists (a mixture of professional musicians and amateurs) were superb – but the biggest surprise was to find that the Core of Drums at the Concert was none other than the Devon & Somerset Fire & Rescue Service! This year they were celebrating 34 continuous years of attending the annual remembrance at Ypres.



Following the Concert we then joined a huge crowd to watch the Last Post Ceremony at the Menin Gate (which bears the names of more than 54,000 soldiers who died in this area and have no known grave) and to witness thousands of poppies fall onto the dignitaries below (including Philippe, King of the Belgians) and hundreds of onlookers.

The ship then went on to Antwerp - with an opportunity to see the battlefields of Waterloo, where Napoleon Bonaparte was defeated by the combined Armies of the Duke of Wellington and of Field Marshal Blücher. Then on to Dunkirk - with the advantage of being able to visit the amazing Battle of Dunkirk Museum and also go to see the beaches where the mass evacuation of troops took place in May 1940 (i.e. Operation Dynamo) and then, back to Southampton.

It was a very different type of cruise but to us, the most memorable day, of course, was November 11<sup>th</sup> and being able to take part in remembering those who lost their lives 100 years ago – all within 4 miles of where Ray's father fought.

Those memories will remain with us forever.

*Lt Col Ray & Claire Tricker*



## **Winkleigh Parish Bus Shelters – Why can't there be more?**

Winkleigh Parish Council are delighted with the beautiful new bespoke bus shelter on Exeter Road, which is a massive improvement on the dilapidated concrete structure that was barely left standing. The erection of this bus shelter was only possible due to the free donations of time, material and expertise from:

- Roger Hill (Southwest Fixings Ltd) for the sourcing and provision of materials, demolition and build,
- Winkleigh Timber for the supply of some material,
- Steve Orrell (Architectural Design and Consultants) for the provision of the design and plans.

On behalf of the Parish of Winkleigh, we thank them whole-heartedly for their 'gift' to the Parish. The cost of the labour for the build was met with the £1500 community donation from uSwitch during 2018.

Parish Councils must fund existing, replacement or new bus shelters in the village through council tax (precept), fund raising, donations, and/or grant applications and are responsible for the maintenance and upkeep of the bus shelter, removal of graffiti, cleaning windows, removal of debris, repainting and maintenance of benches.

Naturally, the Council have been bombarded with requests to erect further shelters throughout the village, however, in order to erect a bus shelter several factors must be considered:



- Who owns the land where the bus stop is sited?
- Visibility/obstruction for traffic
- Safety of users
- Speed of the road
- Costs


An example is the long-protracted request to erect a bus shelter at the junction of Torrington Road and the A3124 by Zukis restaurant. The Parish Council has been in dialogue with Devon County Council Highways and the owner of this land for over 2 years to try to establish the possibility of erecting a weather-shelter at this location. Despite many site visits with all parties and attended by County Councillor Saywell, permission to erect a shelter at this location is refused because: -



- DCC Highways have refused to give permission to place a bus shelter on either side of the road at this location due to health and safety reasons. They state that to do so would reduce visibility on both junctions for vehicles approaching the junctions and wishing to emerge from them, even if the shelter(s) were erected using transparent materials.
- The nearby land owners will not give permission for a shelter to be erected anywhere on their land
- Relocation of the bus stops to enable a shelter to be built has also been considered, but the only viable option was on private land, and again the land owners will not give permission.

Winkleigh Parish Council will continue to support viable requests for new bus shelters to be erected in the Parish and will exhaust all means and options available to the benefit of our residents.

*Melanie Bickell -Parish Clerk to Winkleigh*  
[Winkleighpc1@btconnect.com](mailto:Winkleighpc1@btconnect.com)/01837 89095



# Open Book

Construction & Developments Ltd
  
  

General Building Works  
 Period & Listed Building Renovations  
 Maintenance & Repairs

For a free, no obligation estimate, please call:

01837 83890 • 07541 002017

info@obcd.co.uk    www.obcd.co.uk

## Flogas Consumers in the Winkleigh Area

Most of the LPG-consumers in the Winkleigh area know that there is an on-going agreement with Flogas (our supplier) that everybody should pay the same rate, both bulk and metered customers. However newer residents may be unaware of how this agreement came about.

In 2009 in Kings Meadow it was discovered that householders were all paying different rates (between 35 and 52 p per litre) and the standing charge was just as variable. On top of this there was an added surcharge. When challenged, Flogas made numerous excuses and didn't appear to be taking the matter seriously.

As a result, we contacted Dom Littlewood, a TV presenter specialising in consumer affairs, who took up our case and made a 'Don't Get Done Get Dom' TV program in 2009, which went out in 2010, to help us negotiate a new deal for our gas supply.

Since then Flogas have allocated us a dedicated representative and **guaranteed that we will all pay the same, with our individual contracts all commencing at the same time**, usually 1<sup>st</sup> January.

Shortly before the last contract expiry, a small group, who represent the Winkleigh Flogas consumers, had a meeting with the Flogas representative. We were presented with a range of tariffs and discussed the pro and cons of each, before selecting one.

**Our present tariff, which runs from 1<sup>st</sup> January 2019 to 31<sup>st</sup> December 2020, is fixed at 38.5 p per litre and 13.7 p per day standing charge.**

**If you use Flogas and are not paying these rates, please contact one of the people listed below**, who are the current Winkleigh area representatives. Also if you have any other Flogas-related issues, or would like to become one of the representatives before the next negotiations in December 2020, please let us know.

Janet Hobbs - 83711

Collin Gibson - 680172

Roy Cunnington - 83487

Godfrey Rhodes - 682982



Qixx

Winkleigh

**01837 83229**

## Electrical Contractors

- Rewires, New Builds, Extensions
- Consumer Unit Upgrades
- Showers, Cookers, Heating
- Internal / External Lighting
- Sockets & Telephone points
- CCTV & Networking
- Testing & Inspection (inc PAT Testing)



**Ticket  
Price**  
**£ 10.00**  
Must be  
bought  
in advance

# FASHION HOW

An exciting evening of fashion & fun hosted by  
**Travelling Trends**

A ladies night out with a difference!  
As well as a live CATWALK SHOW,  
there is ample time to try on & buy  
this season's High Street & Branded fashions.

**All at bargain prices!!**



**16<sup>th</sup> March 2019**

**7pm for 7:30pm**

**Winkleigh Village Hall**

Tickets includes: entry, a glass  
of wine and nibbles

Organised by Friends of Winkleigh  
School.

**To order tickets contact**

**Liz: 01837 83654 or**

**Rachel 01837 682942**



**Travelling Trends**  
Fundraising Fashion Shows

[www.travellingtrends.com](http://www.travellingtrends.com)

We  
Accept  
All  
Major  
Credit  
Cards

## **Winkleigh War Memorial Recreational Field Fund (incorporating The Sports Centre)**

2019 is now well under way and as usual the Sports Centre & Fund Trustees are looking forward to the challenges that this year will bring.

**As we were collecting information via questionnaires for the building of a fitness/keep fit suite, the idea of a jogging path was suggested.** We have been asked to create a safe pathway around our site for people to use for exercise, jogging or even walking, well away from the road. There is great potential for this as there is plenty of space. **If you think that it really is a good idea, please let us know via Facebook or by contacting Mike on 07703 962927.** We would particularly be interested in any ideas that you may have regarding a suitable route for such a pathway. Please let us know as we value all feedback.

The plans for the fitness/keep-fit suite are coming along well. We are considering both plans for the actual building and what can be put in it. This is why the information that you have provided is so useful, as we try to match what you want with what we can achieve. The sub-committee responsible for this initiative had a useful visit to a local provider of gym equipment. This has helped us plan the equipment that we could purchase and the layout of the suite. Once our planning stage is completed then we face the task of getting the funding. We are reasonably confident about this but we will let you know how our plans are proceeding.

**Once again we are making an appeal on behalf of our Youth Club. Is there anybody out there who can give just two hours of their time to work with and support the younger members of our village? The club operates on a Wednesday evening and needs your support urgently. There is an experienced volunteer in charge who has endless enthusiasm for the Youth Club. Massive amounts of play equipment are available and space both indoors and outdoors. Please let the club know if you are in a position to help.**



### **Local Handyman service**

#### **Home & garden maintenance**

**Contact Mark on 07900 554088  
or 01837 682985**

**Winkleigh & surrounding areas  
No job too small  
Friendly reliable service  
References available**



It was with great sadness that the Sports Centre Committee accepted the resignation of its Treasurer, Roy Bannister. Roy has worked in this capacity for the last few years and his skilful stewardship of finances has helped to keep the Centre afloat in exceptionally challenging circumstances. Roy belongs to that group of hard-working volunteers who work behind the scenes to support the people of Winkleigh. Generally this is a thankless task but his approach has always been methodical and assured. He will be missed but thankfully he wishes to continue with his role as committee member and Trustee. The committee is also pleased that a volunteer has stepped forward to take over the role of Treasurer.

The Trustees are delighted with the ongoing activity of all that use the available facilities. They rely on their support and hope that 2019 will see all of them build on what they have already achieved. **The Fund has been in place since 1948 with some existing users already being in place at that point in time.** Winkleigh Football Club, for example, already leased land in the Great Stick Park prior to the Trustees setting up the Fund in 1948. With that sense of history, all associated with the Fund and the Sports Centre Committee are driven by the desire to make sure that their facilities remain available to Winkleigh for at least another 71 years. It was a mainly ignored anniversary but the Fund was 70 years old in 2018; perhaps it will still exist in 2088. Anything can happen!

*Tom Radcliffe*  
(Secretary of the Sports Centre Committee & Trustee)



**SAM'S CIDER**  
TO PROPER DEVON CIDER

Celebrating  
100 years  
of cider being  
made on site

Makers of award-winning proper Devon cider

[www.winkleighcider.co.uk](http://www.winkleighcider.co.uk) info@winkleighcider.co.uk Follow us on Facebook & Twitter

You can visit us at Winkleigh Cider Company, Western Barn, Hatherleigh Road, Winkleigh, Devon, EX19 8AP  
Onsite gift shop and local produce

## 'Flower Ladies' - "Easter Lilies Festival" 2019

Each Easter we put lilies in the flower arrangements in the church in memory of our loved ones. Their names are entered into the book of "Remembrance" that will be on display beside the pedestal.

We invite you to **"Buy a Lily" this year in memory of "loved ones"**. The cost is £3.00.



Envelopes for this purpose (with instructions) will be placed in **the church from Sunday 10<sup>th</sup> March 2019**.

They will be also available from the **Post Office** by kind permission of Tony Bayley the postmaster & from **Changes** by kind permission of Valerie Bissett from Monday 11<sup>th</sup> March 2019 and from any of the flower ladies. **The last date for returning envelopes is Sunday 7<sup>th</sup> April, 2019.**

We also invite you to come along to come along to All Saints Church, Winkleigh during Easter week on **Tuesday 23<sup>rd</sup> April between 10.00 & 12 noon for "Coffee & Cakes"** with the flower ladies to view the lilies in the displays, or **in the afternoon until 4.30 pm.**

If there are any ladies out there who would like to join us (you don't have to live in Winkleigh to be involved) please don't hesitate to contact us.

*Marcia Butt – 01837 83734 or Linda Millership – 01837 680040*

WINKLEIGH

07970 963450

INSTALLATION &

NEW AERIALS &  
FREESAT



Digital Aerial  
Installations



TV'S - BT VISION - HUMAX PVR - SET TOP BOX

**RE-TUNING SERVICE**

AERIALS

0800 0930 625

MAINTENANCE

CARADON HILL  
HUNTSHAW CROSS  
STOCKLAND HILL



## Tribute to Julie Mitchell R.I.P.



Julie Mitchell (nee Brend) lived a full and active life in Winkleigh for nearly 50 years. She and her husband Stuart employed a good number of local people and Julie was very involved with many village organisations, in particular making use of her financial skills. She also had a great sense of fun and a dry wit which stayed with her to the very end of her life.

Born in Exbourne, she went to Okehampton Grammar School and Barnstaple 'tech' before qualifying as a bank manager in 1972, the first woman in the south-west to do so. Julie and fellow

farmer's daughter colleague Di Webber, still a friend after 50 years, used to speak to each other in Devon dialect which none of her colleagues could understand.

At a Young Farmers Dance she attended with older brother Mike she met Stuart and they married in 1972. They lived at Beechcroft on Torrington Road, built and lived in the bungalow on Old Chulmleigh Road called Beech Nuts, and later moved into Linden House in 1981.

Daughter Tracey was born in 1973 and Joanna in 1977.

In 1974 they took over Stuart's father's ironmongery shop (now Moorland Heights flats). They also sold kitchens and carpets and when Dutch Elm disease reached the area they moved on to selling wood burning stoves and accessories. In 1984 they bought the Moore and Morrish DIY premises on the airfield (now Rangemoors) and sold wood-burners and flue and chimney supplies from there.

Julie carried on her busy life, running the finances of the several businesses and raising her daughters while becoming heavily involved in village life. She learned to ring the Church bells and was also, along with Tracey and Joanna, a hand bell ringer. She served on the Church Council for over 40 years, becoming treasurer, planned giving officer and churchwarden as well as treasurer to the church flower ladies. She joined the Fair Committee in 1995, again becoming treasurer, or bean counter as she preferred to put it. She helped with the finances of many village organisations as treasurer or examiner of accounts right up until she was too ill to continue. Holding cash for these organisations, especially as it built up through Fair Week, was an onerous responsibility, solved in typical Julie fashion – her safe was a red casserole dish in the kitchen cupboard, with the marmalade pan for overflow!

Julie also did Keep Fit, played badminton and whole-heartedly threw herself into the halcyon era of Winkleigh Fair when the fancy dress competition was a major



highlight. She and Marcia appeared in many guises: a cow, PG Tips monkeys complete with bicycle, transatlantic sailors, aerosol sprays, the Flintstones, Beefeaters, Punch and Judy and Nigel Mansell and his pit crew, to name but a few. These were often last-minute thoughts with bits being stuck to their costumes even as they made their way to the square or hall for judging.

Not many people knew that Julie was also a trained Samaritan and manned phones on day and night shifts until again ill health forced her to stop.

In more recent years Stuart and Julie had a classic car, a Mercedes 280SL in metallic gold, imaginatively called Goldie! They had many fun outings in her, top down on fine days, and several of us were privileged to go along as passengers.

Sadly Stuart died of cancer in 2014, 6 months after moving in to the house they built in the garden of Linden House and in 2015 Julie was diagnosed with cancer and Parkinson's Disease. Undeterred, she went through surgery and chemotherapy while continuing to get out and about, enjoying the companionship of her good friend Jim, and carrying on with her gardening and 'bean counting'. Many will have benefited from the apples at her gate – free to a good home. She continued to dote on her four grandchildren, Beth, Amy, Cora and Theo and they will miss her greatly.

Julie remained at home until the last week of her life, largely cared for by her daughter Joanna, and was finally admitted to the wonderful care of North Devon Hospice where she passed peacefully away on Boxing Day morning, just two days short of her 71<sup>st</sup> birthday.

She is remembered fondly, with many tears and many smiles and laughs by all who knew her. May she rest in peace.

*Andrew and Sue Ware, Marcia Butt*

<---- o o o ---->

Julie Mitchell was among the founder members of the Winkleigh Society and served for some years as its Treasurer and Membership Secretary. In addition, she volunteered to take on one of the longest delivery rounds of Distinctly Winkleigh - Exeter Road, Torrington Road and Hatherleigh Road up to Western Barn – a chore which she performed up to 2017, when it became too difficult for her to continue. Julie kindly oversaw the Society's Accounts for several years. She also kept in touch with Roy Cooper, who was instrumental in the formation of the Winkleigh Society and, as was only discovered very recently, used to send his widow Rachel a copy of each Distinctly Winkleigh - a gesture which will be continued in future.

*Alan Mulcahy*

## Notes on Winkleigh Church Building Restorations

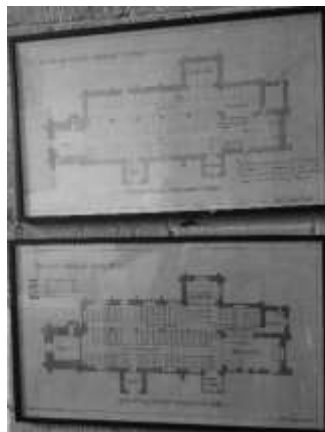
Dedicated to All Saints, the Church is mainly 14<sup>th</sup> & 15<sup>th</sup> century (although the Chancel seems to date from the end of 12<sup>th</sup> or early 13<sup>th</sup>, as it was extensively repaired between 1307 & 1314). It was restored again in 1873 and the Barnstaple architect Mr J F Gould's plans hang in the Gidley Chapel (the south transept). The plan's colours which indicate his estimates of the dates of the various parts of the building have now faded somewhat. The scale of the plan is 8 feet to 1 inch.

### 19<sup>th</sup> Century Restoration

The Church has been extensively restored twice since 1870. The first was carried out as a result of the generosity of George Pinckard a native of Winkleigh. It is commemorated by a stained glass window dated 1873 on the south side of the Nave and a bust with silver plaque, now placed in the small south window near the High Altar.

This restoration embraced:

- The complete renewal of the Nave & Aisle;
- The thorough repair of the rich cradle roofs (which had been plastered over) in the Nave, Chancel, Ladye Chapel (Gould's spelling) and North Aisle; there are a total of seventy attractive gilded carved Angels about 20 inches high (which vary in size above the Chancel) and are affixed to the frieze at the bottom of the rafters supporting the cradle roofs. The Angels look down on the congregation;
- The re-seating of the Church throughout with oak pews with carved ends. Gould's 1873 plan of current arrangements states "the pews are all modern & very high it is impossible to kneel" The 1873 proposed plan increases the number of seats from 250 at floor level, exclusive of the Chancel where an original pew can be seen against the south wall. Some of the pew ends have the carved initials of the craftsmen connected with the work of restoration. They are: PB & IP; RP; PG + date of 1873; CIP & PWAH; PHG and on two pews in the Ladye Chapel: LFG + date of 1917;
- Interestingly one pew end has the 1<sup>st</sup> & last letters of the Greek alphabet carved; depicting God the ALPHA and the OMEGA, the Beginning and the End, the First and the Last (from dust we come and to dust we return);
- The re-casting of the bells in an extensively renovated tower. The Pinckard family made many other gifts including the rich pulpit of Derby alabaster, a very fine organ, the clock (Westminster Chimes were added 1933) and completion of the octave in the tower.



The Church was re-opened in 1873.

## 20<sup>th</sup> Century Restoration

The tragic death in 1975 of Robert Luxton, of West Chapple Farm, Winkleigh, whose family had for many years been connected with their Parish Church resulted in a generous bequest to the Vicar and Wardens for the repairing, enlarging, altering, furnishing and equipping the Church. The work, carried out by various local firms & craftsmen, was planned and directed by Mr W T R McMillan-Scott RIBA, of Okehampton. It included:

- The complete re-roofing after preservative treatment;
- The installation of a modern oil-fired central heating system;
- The complete re-wiring and re-lighting to a modern design, incorporating a public address system with loudspeakers in some of the light pendants;
- The erection of a tower arch screen of oak and glass permitting the construction of a ringing chamber above;
- The construction of an oak inner porch to the north door and oak doors to the outside of the south porch;
- Overhaul of organ;
- The removal of kerbstones and levelling of the Churchyard.

Winkleigh Church must now rank as one of the finest specimens of a village Church in its state of preservation.

*Graham Gale*

 <p><b>Wallingbrook Health Group</b> <b>Community Health &amp; Wellbeing Event</b> <b>Saturday 16 March 2019</b> 2pm - 5pm <b>Chulmleigh Pavilion, Leigh Road, Chulmleigh, EX18 7JW</b></p> <p>Join us for tea &amp; cake, meet local organisations offering activities in the area.</p> <p>Free spine checks, mini massages, craft sessions and lots more.</p> <p>We look forward to seeing you,</p> <p>For further information contact Kate Burns - telephone 01709 580295 Together, we build happy, healthy communities.</p>	<p><b>www.ashridge-court.co.uk</b> <b>01837 352025</b> <b>info@ashridge-court.co.uk</b></p> <p><b>ASHRIDGE COURT</b></p>	
	<table border="1"><tr><td><p><b>The Ashridge Great Barn</b></p><p>Nestled in a private valley, the Ashridge Great Barn offers a large flexible space with inbuilt facilities for a event with proper rustic style.</p><p>Keep an eye on the website or follow us on social media @ashridgecourtfarm for information on Community Events and Pop-up Restaurants</p><p>Get in touch to book for Weddings, Parties and Other Events</p></td><td><p><b>Ashridge Court Farm</b></p><p>Grass-fed Beef Boxes Large or Small Mixed Cuts Requests Accommodated Where Practical</p><p>Free Range Christmas Goose</p><p>Seasoned Hardwood Logs</p><p>Coppice Products Pea Sticks and Bean Poles</p><p>Sawn Wood Products</p></td></tr></table>  <p>Credit: Watercolour Woodshed</p>	<p><b>The Ashridge Great Barn</b></p> <p>Nestled in a private valley, the Ashridge Great Barn offers a large flexible space with inbuilt facilities for a event with proper rustic style.</p> <p>Keep an eye on the website or follow us on social media @ashridgecourtfarm for information on Community Events and Pop-up Restaurants</p> <p>Get in touch to book for Weddings, Parties and Other Events</p>
<p><b>The Ashridge Great Barn</b></p> <p>Nestled in a private valley, the Ashridge Great Barn offers a large flexible space with inbuilt facilities for a event with proper rustic style.</p> <p>Keep an eye on the website or follow us on social media @ashridgecourtfarm for information on Community Events and Pop-up Restaurants</p> <p>Get in touch to book for Weddings, Parties and Other Events</p>	<p><b>Ashridge Court Farm</b></p> <p>Grass-fed Beef Boxes Large or Small Mixed Cuts Requests Accommodated Where Practical</p> <p>Free Range Christmas Goose</p> <p>Seasoned Hardwood Logs</p> <p>Coppice Products Pea Sticks and Bean Poles</p> <p>Sawn Wood Products</p>	

## What's going on at Winkleigh Methodist Church?

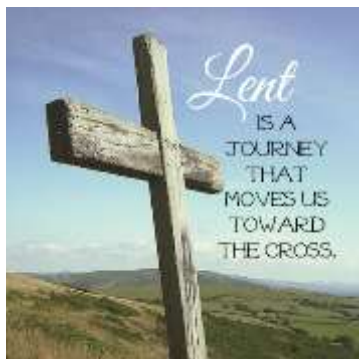
Christmas seems a long time ago now but we would like to thank everyone who attended and took part in the Carols in the Barn in December, as well as the Hill family for preparing the barn and hosting the event. It was great to see so many of you and so good to report that **£380 was raised and has been sent to Pancreatic Cancer UK. What a great result!**

We are really pleased to be working closely with All Saints, Winkleigh and have recently held joint events including the Plough Service and a prayer and reflection evening as part of the Christian Unity Week. Other joint events planned are:

**Friday 1 March World Day of Prayer** at the Parish Church. 6.30 pm for refreshments with a 7.15 pm start.

**Tues 5 March Pancake Evening** starting at 6 pm at Winkleigh Methodist. All welcome!

**Wed 6 March Ash Wednesday Service** - 7 pm at All Saints



On Tuesday evenings and Thursday afternoons a series of **Lent Groups** have been arranged which will be led jointly between Revd Helen King, Revd Liz Singleton & Vicki Brown. The sessions will consist of Bible discussion and practical implication with the theme of **Encountered: Meeting God in Ordinary Places**. Each session will be self-contained and the same session will be repeated in both venues weekly. Everyone is invited to any of the sessions and a mix and match of either the Tuesday or Thursday group.

LENT GROUPS	
Winkleigh Methodist Tuesdays 7 pm	All Saints, Winkleigh Thursdays 2 pm
Tuesday 12 March	Thursday 14 March
Tuesday 19 March	Thursday 21 March
Tuesday 26 March	Thursday 28 March
Tuesday 2 April	Thursday 4 April
Tuesday 9 April	Thursday 11 April

Some of you may already have met **Vicki Brown** who is employed by the West Devon Methodist Circuit as a pastoral worker. She works with our Minister, Revd Liz Singleton, and the Circuit Ministry Team which includes our youth and family workers. Vicki is working mainly with Methodist churches in this end of the Circuit

including Winkleigh, Broadwoodkelly, Spreyton and Iddesleigh. Liz and Vicki are both working closely with Revd Helen King, hence the programme of events outlined above. By the time you read this, Vicki's official welcome service will have taken place at Fairplace Methodist, Okehampton. We are delighted to have Vicki's support and look forward to getting to know her better.

**Easter Holiday Club, Friday 12 April from 10 am - 3 pm**  
**“Wreck it Ralph does Easter”**

Please see our Facebook page or poster outside the Chapel for further details.

**Food Bank:** A reminder that donations for the food bank based at Okehampton can be dropped into the Methodist Church (open for Sunday services as listed below and also open on Mondays for Oasis from 11 am – 2 pm). Families receiving the food donated will be particularly grateful at this special time of the year.

Our regular activities continue ....

**Sunday worship** begins at 11 am with coffee served from 10.40 am. Sunday School and SOW for teenagers runs at the same time. Every first Sunday in the month we meet at 5.30 pm (café church) or 6.30 pm (Recharge, youth focus) instead of 11 am and have an informal time of worship and bring-and-share food. Please see our notice board for more detail.

**SPACE Youth Club** runs on the second and fourth Friday of every month: Years 5 & 6 from 7 to 8.15 pm and Year 7 upwards from 8.15 to 10 pm - £1 entry fee and a tuck shop available for anyone wanting to buy a snack.

**Oasis Café at Winkleigh Methodist Church** continues to run on Mondays with a home-cooked two-course lunch being served at 12.30 pm (coffee, lighter lunches or cakes also available). All ages welcome – please pop in. The photo gives an idea of the delicious food that is served (pork casserole with apples and seasonal vegetables followed by lemon cheesecake)!



All our worship times and preachers are on our notice board outside of the chapel along with any other special events. If you are on Facebook, you will be able to keep up to date with what's happening at **WINKLEIGH METHODIST CHAPEL** or **SPACE for Youth Club** information.

For more detail about church life or prayer requests please contact any of the people below, or any other church member, and we will be do our best to help you.

**Alan and Fiona Marshall 01837 83809 / Pam Down 01837 83674**

---



The poster features a green background with large, stylized leaves. In the top left corner is a circular logo with a stylized 'W' and 'S' intertwined. The text is arranged in a clear, readable font, with some parts in italics. A QR code is located on the left side, and a red 'making music' logo is in the bottom left corner.



*The Winkleigh Singers*

*Spring Concert*

<b>W A Mozart</b>	<b><i>Benedictus sit Deus K117</i></b>
<b>J S Bach</b>	<b><i>Cantata 84: Ich bin vergnügt mit meinem Glücke</i></b>
<b>Francis Poulenc</b>	<b><i>Gloria</i></b>
<b>Arvo Pärt</b>	<b><i>Littlemore Tractus</i></b>

**with**  
**Donna-Marie Broomfield, soprano.**  
**David Davies, organ**

**Saturday 23rd March 2019 at 7.30pm**  
**Doors open 7.00pm**



**St Michael & All Angels, Great Torrington**  
**Tickets £15 (accompanied under 16s FREE)**  
**available from choir members**  
**on-line at [www.winkleighsingers.org.uk](http://www.winkleighsingers.org.uk)**  
**or on the door**

**Refreshments will be available before the concert and during the interval (cash bar)**



The Winkleigh Singers is a Registered Charity Number 1171218  
Hon. Patron: Sir Richard Stilgoe

## Exeter Road Bus Shelter

5



*Photo: Phil Griffiths*

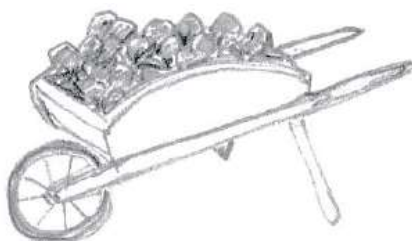
Pictured at our new bus shelter, built to traditional craft standards, is Councillor Sue Ware, Penny Griffiths (Winkleigh Society) & Steve Orrell, who drew up the plans. Steve explained that he designed it to echo and reflect the historic streetscape it sits in: the stone complements the stone in The Old Smithy, the church steps and lych-gate leading to the church.

Roger Hill and his stonemason constructed and oversaw the building of which several local craftsmen played a part.

Winkleigh Timber provided and machined the rustic oak frame (engraving “Old Man’s Seat” – *the name of the shelter known to generations of locals* – on the cross beam.

Providing comfort and shelter to the passengers on Exeter Road, this handsome shelter is a source of pride. It is a fine example of our “Village Design Statement” aspirations.

*Phil Griffiths*





# MAKE A CHANGE BECOME A LOCAL COUNCILLOR

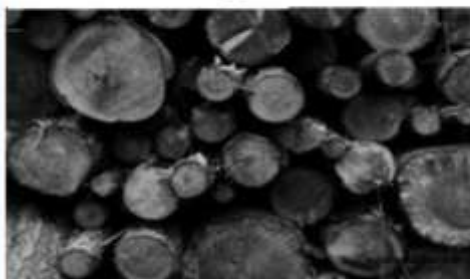


**IF YOU CARE ABOUT  
WHERE YOU LIVE AND ARE  
PASSIONATE ABOUT YOUR  
COMMUNITY, WE NEED YOU**

**JOIN US AND MAKE A  
LOCAL CHANGE**

**nalc**  
Northampton Local  
Council

## Local Logs



Dry seasoned hardwood

All stored under cover & delivered in  
Chulmleigh & surrounding area.

Truck Load £80

Double Load £160

Trailer Load £270

Net of Logs £4

Net of Kindling £4.50

Martin 07817 464420 [parish@btinternet.com](mailto:parish@btinternet.com)  
[www.mpccontracts.co.uk](http://www.mpccontracts.co.uk)



# MAKE A CHANGE BECOME A LOCAL COUNCILLOR

## WHAT DO LOCAL COUNCILS DO?

Your local council has an overall responsibility for the well-being of your local community. Their work falls into three main categories:

- Delivery of services
- Improve quality of life for residents
- Give communities a democratic voice

## BECOMING A LOCAL COUNCILLOR

As a local councillor you can become a voice for your community and make a real change. Councillors are community leaders and represent the interests of the communities they serve.

Local councillors have three main responsibilities:

- Decision-making
- Monitoring
- Getting involved locally

## GETTING ELECTED

To stand for election to a local council you must:

- Be a UK or Commonwealth citizen; or be a citizen of the Republic of Ireland; or be a citizen of another Member State of the European Union
- Be at least 18 years old
- Be an elector of the local council; or in the past 12 months occupied land or other premises in the area the local council serves (as owner or tenant); or work in the area local council serves (as your principal or only place of work); or live within three miles of the local council boundary.

**If you are interested contact the council on:**

**[winkleighpc1@btconnect.com](mailto:winkleighpc1@btconnect.com)**

**[www.nalc.gov.uk/elections](http://www.nalc.gov.uk/elections)**

# Winkleigh Parish Council Spring Newsletter

## What does the Parish Council do?

The Parish Council:

- Manages the Winkleigh cemetery and the cemetery bungalow,
- Comments on and responds to planning application in the Parish, undertaking site visits when necessary,
- Works with the District and County Councils on the maintenance and improvement of our highways and footpaths,
- Take responsibility for community assets, such as the litter bins and benches,
- Take initiatives to improve and maintain the environment, organising the clean and tidy groups,
- Support local groups and organisations providing services for our residents and makes small grants available to support them.

**All councillors are volunteers and receive no pay – they are supported by a part-time clerk. There is currently a vacancy on the Council and so if you are interested please contact the Parish Clerk (*see contact details below*).**



After 18 months' hard work the Neighbourhood Plan has been drafted and is now with the graphic designer. Text, photos and illustrations are being put together for printing. It is expected that the Parish Council will approve the document for extensive consultation at its February meeting.

**The consultation period is YOUR opportunity to say what you think about the policies in the plan and to make suggestions about how it could be changed for the better. Every household will have information about the plan and there will be an exhibition and public meeting about it. Information will be coming through your letter box in March.**

Torrige now has an adopted Local Plan to guide development. The Neighbourhood Plan is an extension of this, containing locally relevant policies that 'add value' to the Local Plan. Our Neighbourhood Plan must fit in with the Local Plan (we can't propose less development than the Local Plan, for example) but we can set out our vision for the Parish, influence the design and type of development and identify the things we

believe are important to protect and enhance. Once in place, Torridge will have to refer to the policies in the Neighbourhood Plan when making planning decisions.

After our spring-time consultation, the plan will be amended to take account of the comments made. It will then be submitted to Torridge, who undertake another round of consultation before the plan is examined by an Independent Planning Inspector. Once this hurdle is passed there will be a referendum in the Parish, where there will be a chance for voters to say if the plan should be adopted.

*Melanie Bickell, Winkleigh Parish Clerk  
01837 89095 / Winkleighpc1@btconnect.com*

## News from Winkleigh Allotments

As reported in the last edition of the magazine Winkleigh Growers allotment holders celebrate this year the tenth anniversary of the establishment of the allotments on the Sports Field by the Winkleigh Memorial Recreational Field Committee.

There are 22 full plots - all being gardened with the exception at present of one half-plot now available to rent at a cost of £30.00 for the year. We would be very happy to welcome a new holder. **If you are interested and would like more information talk to our Secretary, Pam Berry, on 01837 680193**

*John Williams*



**JAD MOTTRAM**  
**PLUMBING & HEATING**

Gas • LPG • Oil • Solid Fuel

All Plumbing & Heating Works  
Multi Fuel & Wood Burning Stoves  
Drainage & Septic Tank Installation  
Residential Park Homes  
Static Caravans

[www.plumberinsouthmolton.co.uk](http://www.plumberinsouthmolton.co.uk)  
[jadmottram@hotmail.com](mailto:jadmottram@hotmail.com)

01769 560985 / 07933 166664



*Need Help in the Garden?*

**RHS Qualified, Experienced  
Gardener**

**All Aspects of Garden Maintenance**

**Planting Ideas**

**Year Round Reliable Service**

**Call Maxine on 01837 680039  
or 07815 309023**



## 'Wright and Proper' - An English Tradition

*South Street, Winkleigh - Open: Tuesdays to Fridays 10-3 & Saturdays 10-2*

Is this the quintessential English Tea Shop, where unaccompanied Regency Ladies could be seen in Society, delicately sipping from bone china cups? The heroines of Jane Austen's novels could be glancing bashfully behind gloves or fans (or over delightful home-made Lemon drizzle cake) at the possible Mr Darcy?



Or, is it reminiscent of the 17<sup>th</sup> Century rumbustious coffee houses that helped to instigate the Age of Enlightenment, where people meet to discuss matters of mutual concern, politics, current events and philosophy?

Maybe it could almost be a potential setting for a series of 'Last of the Summer Wine' complete with sarcasm from behind the counter?

There could be nothing more English than 'Wright and Proper', which is actually all of the above, and more!



Opening the door on a cold February morning, I stepped into a cosy world infused with a buzz of chatter and the rich smell of really good, freshly ground Italian coffee.

Many a plan, many an idea has been hatched in here, bolstered by homemade cakes, teapots of Tea Pigs teas and Fentimans soft drinks, toasted teacakes, gorgeous hot chocolate (with or without marshmallows), or BYO wine (corkage £1.50) to accompany the range of freshly prepared light lunches (available from approximately 11.30 to 2 o'clock'ish – this IS a Devon village!) which are cooked to order, using mostly locally sourced ingredients.



There are at least 3 home-made soups available, jacket potatoes or toasted paninis with a variety of sumptuous fillings, and a range of simple country lunches, such as ham hock with wild rice



and vegetables with an accompanying honey and mustard sauce, or a curry, or maybe a fisherman's or cottage pie. The food is nicely presented, tasty and piping hot, served, as likely as not, with witty banter and good humour by Fran. He's not quite 'Compo', he doesn't have the hat!

This charming shop has retained the décor influence of the previous owners' hand-painted artistic style with a few changes, but retains the Olde Worlde quirkiness, with a variety of potted plants and shelves and alcoves full of interesting China collections and artefacts, some of which are for sale from time to time.

Fran and Keith, who have years of running pubs, restaurants and nightclubs behind them, moved from their Deli in Hatherleigh in May 2013 and opened late summer 2013, taking over from the previous owners and retaining the established name. Their mission is to provide the atmosphere of a pub without the alcohol, a meeting and discussion place for local people and like-minded visitors; supplying good quality beverages and simple country fare light meals.

And gossip? Yes, there's always pleasant gossip, but what is said in Wright and Proper stays in Wright and Proper!

So now the warm spring days are coming, Ladies put on your Easter bonnets, do the 'Ladies who Lunch thing' and Gents pick up your walking stick and meet for banter and 'Putting the World to Rights' over a cuppa and a cake or a light lunch, in this welcoming, most English style little café. We are so lucky to have this in Winkleigh, it is so in keeping with the atmosphere of the village.

*Rachel Goldsworthy (with photos by Greg Goldsworthy)*



## Police Constable French

Police Constable French served in Bideford and later moved to Exmouth, thence to Woolacombe and from there and during the cusp of 1900 was the constable at Winkleigh, for how long it is not known.

A widower with two children, John and Walter, it was at Winkleigh he met and married **Mary Ann Hill**, widow of William Henry Hill who had a small holding (believed to be near Berners Cross) in a cottage there. William Henry was known by his family and locally with this name form and the reasoning is not known.

Mary Ann Hill had three daughters from her first marriage with William Henry: Marian, Gertrude and Doris who attended Winkleigh School from that time. Following the death of William Henry from consumption (tuberculosis) and the marriage of Frederick French to Mary Ann the new family lived at a property in the Market Square and all the five children attended Winkleigh School.



This picture was taken just after the family had moved from Winkleigh, the child in the picture, their daughter Nora was 4 years old at the time; she now lives in Barnstaple.

The children dispersed: Marion married the Lifeboat Mechanic at Clovelly, Charles Shackson, and lived there. Gertrude moved to Eastbourne and married, whilst Doris married the Post Master at Umberleigh, Frank Churchill, and went on to be the Post Mistress there and later at Chittlehampton. They then moved to the London area and she became Post Mistress at Bromley.

Frederick French's son John, following a traumatic time during the war living under enemy lines in Italy; later as a prisoner of war, moved to Guildford where he and his wife ran a grocers shop. Their son Walter worked at the Barnstable Abattoir, whilst living at Swimbridge with his wife Daisy who is now living in Barnstaple.

Later Constable French took his last assignment in the police force at Bradworthy until he retired. He and his wife then moved to Chittlehamholt, then onto Cobbaton and lastly to Clovelly. He died on December 25<sup>th</sup> 1960 at the age of 82 and he and his wife are buried at Clovelly.

*Submitted by Jan Ovenden*



## Tribute to George Raymond Jarvis (1937–2019)

George Jarvis remembers with a chuckle how his mother, newly widowed with nine children, replied to a suggestion that perhaps some of her youngest could go to Australia on the Migrant Scheme : “If I can’t look after them, no-one else will.”

One of three brothers with six sisters; George was raised near Tinkers Post. Related and connected to so many Winkleigh families and with his grandfather, Edward James Jarvis, who was killed at the Battle of Loos in 1915, commemorated on The Winkleigh War Memorial, George is man and boy a proud Winkleigh resident.

He and his two brothers would push a wheelbarrow from Tinker’s Post to Arty Wonnacott’s coal-yard which was in Queen Street and wheel it back, and woe betide if they spilled any on the way back home.

George loved roaming the fields and woods, bird-nesting and ferreting for rabbits. Back then the fields were full of men, rather than machines, working the fields. The hedges were very high to give shade and shelter to the many sheep, pigs, cows, calves and horses. Everyone knew everyone, children roamed everywhere; but any misdeeds would get back to mother who with her ‘flippy stick’ kept them all in line.

During the war George, his brothers and friends were fascinated by The Airfield: its lengthy construction and, when operational, observing the landings and take-offs. Americans, Canadians, Poles and Norwegians were everywhere. They were friendly and enlivening for everyone. George remembers going to The Airfield Cinema for free film shows and being given sweets and chocolates.



**DOWN FARM**  
*Growing food feeding the community*

Fresh, delicious, organic veg from our farm in Winkleigh. Visit our online shop/call to order.

Collection points in Winkleigh and surrounding areas.

**VEG BOXES AVAILABLE JUNE - DECEMBER**  
**VEG AVAILABLE IN MAD BUTCHERS YEAR ROUND**

Contact farmers Olivia & Henry  
07739892488 | [www.down-farm.com](http://www.down-farm.com) | [hello@down-farm.com](mailto:hello@down-farm.com)

Land Army girls replaced many of the farm-workers who were called up and later refugees or displaced people were housed on the airfield and many of them worked on the farms; "Damn good workers" said George. Two of his sisters were to marry two of the men from the D.P. camp. Too young to go to the regular dances at the Village Hall, he recalls sitting on the steps and listening to the band music and seeing his sisters there with their stocking seams drawn on their legs.

George drove tractors, ploughed, spread manure: all sorts of agricultural work. He also did a long stint at the saw-mills on Winkleigh Airfield; again, learning on the job. The big band-saws were very dangerous and you had to keep alert.

A long-time resident at Southernhay, George recalls how desperately new houses were needed in the village. Several of his family came to live on this post-war estate, including George and his wife Pam.

And George's abiding memory of Winkleigh? "The skill and craft of a farm-labourer casting a hedge and the beauty and the freedom of the woods and fields of Winkleigh and Hollocombe".

*This conversation with George took place in 2015 as part of The Winkleigh Society's "Lives in a Landscape" series. His sister Pricilla has asked that extracts from the article be printed as a tribute to her brother.*



- MOTs • Vehicle Diagnostics
- Clutches & Cambelts • Brake & Brake Repair
- General Maintenance • Air Conditioning
- Servicing • Bodywork & Restoration



**01837 682 678**  
**[www.airfieldgarage.com](http://www.airfieldgarage.com)**



## ACE Archaeology Club

We have spent the winter preparing for the next dig and enjoying walks and most recently a day on identifying animal bones with Dr Wendy Howard.

We have thousands of finds that need processing, mostly sherds of pottery. They need to have numbers written on them and then details of what, where and when adding to spread sheets. This will be a long job. If there is anyone out there who has thought they might like to get involved but didn't fancy digging, we could really do with some help. This can even be done in the comfort of your own home, although we do get together from time to time so you wouldn't be completely on your own. Interested? Do get in touch though the website.

Our next ACE Saturday was on working with leather, and this was on the 3<sup>rd</sup> February. There was a charge for this to cover the cost of the leather.

Details on the website along with all the other days that are so far arranged; these could include walks, a visit to a brewery and an experimental archaeology day.

### Moistown Excavation

**We have also set our dig dates for this year: 20<sup>th</sup> to 28<sup>th</sup> July and then week off to catch up with things and rest; then the 3<sup>rd</sup> to the 18<sup>th</sup> August. All of these dates do depend on the weather so we will need some flexibility.**

We would love to see our membership grow so do please get in touch and perhaps come along to one of our ACE days to meet us and see what you think.

Contact us on [www.acearchaeologyclub.wordpress.com](http://www.acearchaeologyclub.wordpress.com) or [surica47@gmail.com](mailto:surica47@gmail.com)

*Erica Williamson*

*ACE Archaeology Club secretary*

## Mobile Libraries

Devon's libraries are run by a charity called Libraries Unlimited.

There are four Mobile Library vans and our local one comes from Torrington. It visits local villages on a 4-weekly timetable. The van brings lots of fiction and non-fiction books to Winkleigh Square and Four Seasons Village and Hollocombe. Membership is free – you just need to fill in a simple form and you will be able to start borrowing books. The great thing is, there are no fines for overdue books. You can order books for a small fee (75p) – non-fiction books are free. Why not join up and enjoy the choice of books from a wide catalogue (which is accessible online).

Timetable is available here:

<https://www.devonlibraries.org.uk/web/arena/mobilelibraries>

**Next visit to Winkleigh is March 8th and Hollocombe is March 21<sup>st</sup> (12:25-12:45)**

## Winkleigh YFC

The last few months have been busy for the young famers; with plenty of festive events to get stuck in to. When I last updated you, we were about half way through the carnival season and I'm pleased to say that the members involved saw it out in style, by winning the remaining 2 carnivals; Hatherleigh and Holsworthy. **In total this meant as a club, we'd won an amazing 7 trophies!**

In late November, we held a very successful cider and pasty quiz. With around 20 teams the village hall was packed out with young farmers, parents and many locals. We raised £453 for charity. Many thanks to all who came and supported us. We also held a blind drop starting from Iddesleigh village hall. Again this was incredibly successful with 15 teams, 2 of which were from Stratton YFC! All money raised added to our charity total. So far the **charities we've decided we'd like to support this year are Mind and Farms for City Children.**

December saw us enjoying a club Christmas meal at the Tom Copley, Spreyton, Christmas bingos and mulled wine and mince pie quizzes and of course the Devon YFC Christmas Ball in Exeter. The New Year saw us holding our annual disco which was very well attended and made a good profit for charity.

Since New Year, a small group of members have been rehearsing for the group round of the entertainments competition.



# Twixtmoors

~upcyclers~

**Autentico Paint Stockist**

**Used, Upcycled and Painted Furniture**

**Reupholstering and Recovering Chairs, Sofas and Ottomans**

**Workshops and Training (at your place or ours)**

**Bespoke Commissions**

**Sandblasting and Stripping**

**Tel: 01837 83148**

**[www.facebook.com/twixtmoors](http://www.facebook.com/twixtmoors)**

**[info@twixtmoors.com](mailto:info@twixtmoors.com)**

**[www.twixtmoors.com](http://www.twixtmoors.com)**



**Unit 2**

**The Airfield**

**Winkleigh EX19 8DW**

**(on the Bedwell site)**

**Opening hours - we are here most days from 9 am til 6.30 pm**

**Should the front roller shutter door be down, please use the first entrance on the left hand side of the building**

We've been meeting up and having a laugh whilst learning a selection of sketches. The performance in Bude takes place on the 9<sup>th</sup> February, so I'll let you know how they get on next time.

As well as rehearsals, we've managed to fit in an evening of bubble football with Lewdown YFC and a handful of members also joined with Tarka for the county sports competition in Exeter.

Upcoming events:

- Easter disco on the 19<sup>th</sup> April in the Sports Centre.
- Big Breakfast at Nethercott House (home of Farms for City Children) in May.  
Look out for posters nearer the time.
- We are hoping to hold another tractor run at the end of March (more info to follow on Facebook)
- Charity Bike Ride/ Run on the Tarka trail (see poster on next page) All donations would be gratefully received.



For more information please speak to Ashleigh Chambers on 07949886480, as always or look at our Facebook page.

*Katrina Brook*

**CoHeat Services**

**Oil-fired Heating and Cooker Specialists**



Oil-fired Boiler, Rayburn and Aga Servicing  
New heating systems fitted  
All plumbing work undertaken no matter how small  
Heating systems updated.  
Complete bathrooms and kitchens including tiling and all associated  
works carried out. You supply, I fit, or I supply everything  
and fit as long as you supply coffee . . .  
For a free quote or just friendly advice call John on  
01837 83080 or 07768 164696

# WINKLEIGH

ybc

## 34 mile cycle and 10 mile run

FUNRAISING FOR THE CHARITIES FARMS FOR CITY CHILDREN AND MIND.  
ON THE 14TH APRIL 2019 STARTING AT MEETH AND FINISHING AT INSTOW  
VIA THE TARKA TRAIL.

PLEASE VISIT OUR FUNRAISING PAGE

[HTTP://UK.VIRGINMONEYGIVING.COM/WINKLEIGHYBC](http://uk.virginmoneygiving.com/winkleighybc)

ALL DONATIONS WILL BE VERY GREATLY APPRECIATED

*Jenny Rock*

**Rock Solid Book-keeping Solutions**  
*Creating order from Chaos!*

Collacott Lodge,  
Winkleigh,  
Devon EX19 8LE

Mobile: 07743 683 756

Email: [rocksolidbookkeeping18@gmail.com](mailto:rocksolidbookkeeping18@gmail.com)

Book-keeping, Bank reconciliations, Creditor & Debtor Reports.  
VAT Returns, Accounts to Trial Balance, Liaise with Accountants.

Temporary, 'One-Off' and Permanent Contracts undertaken.

Friendly, helpful advice for small businesses.

Accounting experience in:

Farming, Manufacturing, Pub, Convenience Store and Retirement Homes

CIMA Advanced Diploma in Management Accounting.

Association of Accounting Technicians NVQ IV.

## The Music Room

I know that some of you are getting impatient for The Music Room to get underway again. Well, it's not too long to wait now: **we'll be kicking off our new season on Friday March 8th when we present 'An Evening with Jim Causley'**. Jim is not only an exceptional folk musician but a very enjoyable entertainer as well, who is very much in demand right across the country, so don't miss this opportunity to hear him locally.


**In support will be Trev Munkenbeck and Kat Barlow.** Each are top quality singers on their own. Together they excel. Last seen in The Music Room back in May when they were very well received.

**Venue:** The Waie Inn, Zeal Monachorum, EX17 6DF. Doors to the function room open at 7 pm and the music starts at 7:30 pm.

You can order food at the bar to eat in the restaurant from 5:30 pm, or in the function room from 7 pm. You're also very welcome to eat while listening to the music, so no need to rush.

There's also a well-stocked bar in the function room with a range of excellent wines and a choice of real ales.

**Donations: £6+ please (£3 under 18).**



**THE SHIFTERS**  
**Spirebourne Limited**  
Liquid Waste Disposal and Drainage Co

**EMERGENCY CALL OUTS**

Septic Tank/Cess Pool Emptying – Any Size  
Grease Traps  
Drain Blockage Clearance  
Various Commercial Liquid Waste Disposal  
Servicing  
CCTV Drainage Surveys  
Pump Repairs & Renewals  
Installation of Septic Tanks & Sewage  
Treatment Works  
Mantair Units

**FREEPHONE 08000 855 185**  
spirebourne@hotmail.co.uk  
www.spirebourne.co.uk

**Accessibility:** The function room is upstairs, but there is a stair lift available. Please ask a member of the bar staff for assistance. Once upstairs you'll find the bar and toilets are both easily accessed on the same floor and if you order food it will be brought to your table in the function room.

**Our next event is on April 12th event in the Sports Centre and will be a fundraiser for cancer support charity, 'Force' in Exeter.**

Further details for these event and others throughout this year and next are on our website:  
<http://themusicroomlive.org.uk>

Thanks for listening.

*Trevor Melhuish*

## What's the State of Dartmoor's Rainforests? ...

**Plantlife and project partners Dartmoor National Park, Natural England and the Woodland Trust need your help to find out.** Dartmoor's woodlands are a special habitat known as **Atlantic woodlands or temperate rainforest**. Influenced by the Gulf Stream, high levels of rainfall and good air quality, the older native woodlands on Dartmoor support some pretty rare and internationally important lichens, mosses and liverworts. However this habitat and its 'lower plant' life are under threat as a result of changing management, tree disease, air pollution and climate change.

**You can help us to understand where woodlands are that have the most potential to support these lower plants and which woodlands are under threat by taking part in our Rapid Woodland Assessment.** This is an easy-to-use tool that you can use in your own time during a woodland walk. **You can take part now by visiting** [www.plantlife.org.uk/uk/our-work/conservation-projects/woodland/building-resilience-in-south-west-woodlands/interested-in-volunteering/rapid-woodland-assessment-rwa](http://www.plantlife.org.uk/uk/our-work/conservation-projects/woodland/building-resilience-in-south-west-woodlands/interested-in-volunteering/rapid-woodland-assessment-rwa) or come along to one of our Dartmoor training events (booking is essential). Next event with spaces still available is:

9<sup>th</sup> May Burrator - <https://www.plantlife.org.uk/uk/discover-wild-plants-nature/events/dartmoor-rapid-woodland-assessment-training-burrator>

*For more information contact [Alison.smith@plantlife.org.uk](mailto:Alison.smith@plantlife.org.uk)*

## Adam of Eden Tree Care



A friendly, family run company aiming to provide a range of high quality arboricultural services to our customers trees.

### Services include:

Tree Removals / Dismantles  
Tree pruning, reductions, thinning, shaping and dead wood removal  
Hedge trimming  
Stump grinding  
Tree planting

All work is insured to £5million, complies with relevant British standards and is carried out by appropriately trained and equipped professional arborists

**CALL NOW** for friendly, professional advice and to arrange a **Free no obligation quote**

**TEL: 07398268877**

**Email: [adamofedentrees@gmail.com](mailto:adamofedentrees@gmail.com)**

**Check us out on facebook and instagram: [@adamofedentrees](https://www.facebook.com/adamofedentrees)**



## Carols in the Barn - 2018

### *Who's the New Noisy Neighbour?*

That is what we were investigating when Hills of Devon opened up one of their large sheds for **Carols in the Barn**. Once again the atmosphere was magical with twinkling lights surrounding the area set up with hay bales and seating.

Chief Detective was a mouse! And by solving all the clues ably assisted by the children dressed up in their favourite nativity outfits and with total audience participation, the mystery was solved. It was a crying baby, a very special baby.

This was the Christmas Story retold as it is every December but definitely with a difference. There were lots of Carols sung and all the children were given a copy of the book to take home. The refreshments went like hot cakes and we hope everybody went home feeling the warmth of the Christmas spirit.

**The donations this year amounted to £380 for Pancreatic Cancer**, the charity decided upon at a Chapel meeting.

**Thank you to all who helped to make this such a success and especially to everybody who came along to support us.**

**Hopefully we will do it all again in December 2019. See you there!**

*Jan Ovenden*

## Okehampton Choral Society

**Okehampton Choral Society will be performing a special programme for their next concert on SATURDAY 16<sup>th</sup> MARCH at All Saints Parish Church, Okehampton starting at 7:30 pm.**

The opening work is Mozart's "Solemn Vespers" - a work of sublime beauty, written when he was 24. It includes the wonderful "Laudate Dominum" - a haunting melody and perhaps the most famous part of the work. Following this will be Haydn's "Maria Theresa Mass" which was written towards the end of his long successful career and is full of his typical joyous energy.

The concert falls on the eve of St Patrick's Day and to celebrate this the society will be giving the premiere performance of an exciting new piece for choir and orchestra "The Prayer of St Patrick" by the society's conductor, the composer Andrew Wilson.

The choir will be accompanied by a full orchestra led by Paul Mathews and will be joined by a starry line up of professional soloists. Refreshments will be served after the concert.

Tickets are £10 (£5 students) available from choir members, Cargo Cult in The Arcade or on the door..



## News from Chulmleigh Tennis Club

**Chulmleigh Tennis Club** is an **LTA registered club** which organises coaching and many other activities to promote tennis to all abilities and all ages from 4 to 80 on the 3 courts with floodlights at the Chulmleigh Academy Sports Complex, EX18 7AA.

**Our regular activities, all year:**

**Tuesdays** - Ladies night 6 – 8 pm; **Wednesdays** - Coaching (*term-time*) from 3.35 pm – 8 pm for various groups and abilities. Coach: John Griffiths LTA grade 3 qualified; **Thursdays** - Men's night; **Sundays** - Mixed social tennis 10 am – 12 pm.

**April - September:** -

**Open Tournaments** for doubles & mixed doubles on **Sunday 7th April & Sunday 22nd September** starting at 10 am; you

don't need to be a member or have a partner just come and have a play (a small fee per entry).

**North Devon League matches** with ladies, men's, men's vets and mixed doubles teams.

**Club tournament** for singles, doubles & mixed doubles.

**LTA's Great British Weekends** we organise **open free tournaments**, please link into our Facebook page to find out when these will be.

**Junior Open Tournament (Chulmleigh Fair 25 July)**

**Summer holiday coaching for juniors** with Alex White (LTA registered coach).

**September - March**

**Singles and mixed doubles ladder**

**Friendly matches** against local clubs

Please contact the club if you would like further information or to obtain details of our various membership packages - email [chulmleightenniscub@hotmail.co.uk](mailto:chulmleightenniscub@hotmail.co.uk) or tel. 01769 580819.

Information on our **membership packages** is also available at <https://clubspark.lta.org.uk/ChulmleighLTC>

We look forward to hearing from you. Our courts were repainted in 2017 so are still looking very smart and a pleasure to play on!



The poster features the Chulmleigh Tennis Club logo at the top, which includes a red tennis ball and the text 'CHULMLEIGH TENNIS CLUB'. Below the logo, the text reads: 'Spring Market', 'Upstairs stalls £5', '& Coffee Morning', 'Chulmleigh Town Hall', '8.30am-11am', 'Saturday 23 March', 'To book a stall contact', '01769 580819 or', 'chulmleightenniscub@hotmail.co.uk', and 'www.facebook.com/chulmleightenniscub/'.

## Britannia Sailing Trust - Airfield Garage, Winkleigh



A brief update from us for the Spring Edition of Distinctly Winkleigh as it has been a quiet time throughout December but we are now back working as hard as we can to progress the restoration of Britannia.

**We ran a successful Crowd Funder campaign last summer and raised just over £5000 which included a donation from Devon County Council Community Fund as well, so that was very welcome.**

We are currently taking the lines off the boat which can then be drawn up enabling calculations to be made for ballasting and stability, but these lines drawings are rather beautiful and I am looking forward to seeing them completed.

We have formed a very positive collaboration with the **Freshsprig Society** in Bideford, who are restoring the **Steam Ship Freshsprig**, built in the nineteen forties for the Royal Navy as a water carrier for the fleet. She is now based in Bideford, where she is proving an attraction for visitors. We will be sharing skills and expertise with them, which will give our volunteers and theirs, the chance of working on a

historic steel steam ship, or a centenarian traditional wooden sailing boat! Sam is going to make a new mast for Freshsprig, which will give volunteers the chance to learn the traditional skills of wooden mast-making.



We were asked to give a talk to the Forget Me Not Club this week, about our life with Britannia and future plans for her, which we enjoyed very much and would like to thank Alan and Marie-Claude for helping us with the technical bits! We are very happy to do more talks if any groups or societies are interested. Just give us a ring and we will do our best.

We are also very grateful to our small group of volunteers who have been braving the cold and turning up, to move this project on – thank you, all of you for your time and enthusiasm!



And finally, a group of musicians and singers have offered to sing for us to fundraise for Britannia, and so we are planning to have an event at **The Village Hall in Winkleigh on Saturday 27 April**. If you would like to support us and be part of a growing movement to help to save Britannia, then please come along and enjoy an evening of music, song, story-telling, food and drink – all with a nautical theme!

**If you would like to know more about our efforts to save this unique ship, or can offer some time to help, please get in touch – everyone is welcome – phone Vicki or Sam on 01837 682895, or email [haydnsam27@gmail.com](mailto:haydnsam27@gmail.com).**

**Our website is [www.britanniasailingtrust.org](http://www.britanniasailingtrust.org), and we have a Facebook page – [www.facebook.com/britanniasailingtrust](https://www.facebook.com/britanniasailingtrust) which will keep you updated.**

## News from Airfield Garage

This year is going to be very exciting for us at Airfield Garage: we have just launched our brand new website at [www.airfieldgarage.com](http://www.airfieldgarage.com) where you can view current projects that we are working on as well as past projects that we have completed. We also welcomed our new Mechanic, Panos, who started this year and now completes our skilled team. Panos is a very skilled Mechanic who runs the general maintenance side of the garage, covering general repairs and servicing, brakes, clutches and diagnostics on all makes of vehicles both modern and classic.

Peter is our Bodywork specialist who runs our fully equipped body shop, our body shop covers bodywork and paint repairs on all vehicles: from bumper repairs, scrapes and scratches to complete re-sprays.

As well as all this, Andy runs the Classic Car and Camper restoration side of the garage and ensures every project is done to a high standard. Projects have included motorbikes, cars, campers and range between simple touch-ups and tweaks to complete overhauls, new panels fabricated, and interiors being rebuilt.

We are a friendly family run garage and welcome all enquires.  
Ring us on 01837 682678



**Concert at St. Andrew's Church, Sampford Courtenay  
on Saturday, 11<sup>th</sup> May 2019 at 7.30 pm**

Last May, the two Rivers Orchestra and the augmented choir of St. Andrew's Church, Sampford Courtenay gave a concert in aid of Children's Hospice South West under the title "The Cuckoo and the Nightingale". The same forces will give another concert, this year in aid of the Devon Air Ambulance and St. Andrew's Church.

Roger Cleverdon will be the soloist in Handel's Organ Concerto, Opus 4, No. 4 and William Boyce's 4<sup>th</sup> Symphony will be performed together with music by Byrd, Purcell, Maurice Greene, Boccherini, Mozart and Elgar.

Tickets, price £10 for adults and £5 (under 18's) will include wine (soft drinks) in the interval and can be obtained on 01837 82376.

## **Ticket to Ride - (Part 2)**

Soren, a year 7 pupil at Chulmleigh Academy, gets up at 7 am and leaves home at 7:45 with a friend. They walk from Kings Meadow to Sunny View to catch the school bus to Chulmleigh. Along with 6 or 7 others they wait there. He has a bus pass which has to be shown and they settle down for their journey which takes about 35-40 minutes. There are many stops on the way, but there is a heater on the bus. By the time they get to school most of the seats are filled.

Homeward bound, the bus departs at 3:55 pm. The coach is not always as full because of after school activities, sport, drama etc. This of course is reliant on parents picking up later from the school. Soren is used to the longer day now, although, he said, the earlier get-up time makes him grumpier.

Getting around the village, Soren walks and cycles. Going to the playing fields he will go with a friend, but is very wary of that fast road (A3124).

*[Interview conducted as part of follow up to the Hamilton-Baillie traffic survey for the Neighbourhood Plan Group. For the next edition of Distinctly Winkleigh we hope to include an interview from one of the students who travel to Exeter College by train from Eggesford Railway Station.]*

Penny Griffiths

### **Winkleigh POST OFFICE**

**~ Not just a Post Office! ~**

**Large range of Greetings Cards, Gift wrap & Tags**

**Toys & Stationery, Photocopying**

**Business & Private Banking**

**of Cheques and Cash**

**Laundry & Dry Cleaning**

**Travel Money**

**Car Tax**

**Mobile top-ups & electric key charging**

**Cash Withdrawals at the Counter**

**Open 8.30 am-5.30 pm Mon-Fri**

**9 am-1 pm Sat**

**01837 83427**

**Owner: Tony Bayley**

## Seeking a Partner

The **Bondleigh Barn Band** (alternate Sunday evenings at 7.30 pm in Winkleigh Community Centre) now numbers almost 50 players across the whole range of instruments. Almost all these instruments had lain unscrapped or unblown in attics often for 40 years.

And we still welcome anyone getting back into playing with any instrument at whatever level of ability. As in many orchestras we could always do with more string players, but this is a plea from our sole viola.

A single viola, with nine cellos and a double bass behind him, and a squad of first and second violins in front of him, does feel very lonely, and very exposed, and needs a partner (or three) who might just be playing the right bar when he knows he isn't! Is there nobody out there with a viola in the attic?

Before you have to go and get new strings, new hair in the bow and some rosin, do come along and hear what you might be letting yourself in for. *The next dates are March 3rd and 24th. I shall put a spare chair in the viola section waiting for you.*

Peter Howard

01837 83362

[peterjhoward27@gmail.com](mailto:peterjhoward27@gmail.com)



**CHULMLEIGH COLLEGE**  
**EVERY DAY IS AN OPEN DAY!**  
*Contact us to arrange a prospective pupils' tour*

**Let us help YOUR child achieve 'Nothing But Their Best'**

**2018 GCSE Results**  
**87% Maths & English Grade 4 (C) & above**  
*(1<sup>st</sup> in Devon - non-selective schools)*  
**37% of all grades 9-7 (A\*-A)**  
*Top non-selective school in Devon & South West for EBacc average point score*



[www.chulmleigh.devon.sch.uk](http://www.chulmleigh.devon.sch.uk) ☎ 01769 580215 🐦 @ChulmleighAT  
✉ [admin@chulmleigh.devon.sch.uk](mailto:admin@chulmleigh.devon.sch.uk) 📘 @ChulmleighAcademy



## Description of Winkleigh Area - 1929

On the heights just above Morwenstow in Cornwall rise two of Devon's most famous rivers within a mile or so of each other: the Tamar, which acts as a county boundary, on its southward way to Plymouth, and the Torridge, which performs a prodigious loop to the south before it is joined above Hatherleigh by its other tributaries, the Lew and the Okement, which rises at Cranmere. The exploration of these two river-heads will take us right off the beaten track across a boggy moor. If you want to explore an unexploited Devon that hasn't altered since the days of Carys and the Grenvilles, make a bee-line across the open highland to re-join the lovely valley of the Torridge below Monkleigh, where Lord Chief Justice Hankford was shot accidentally by his keeper beneath Hankford Oak.

We come back to the Torridge at Wear Gifford, where an ivy-clad turreted old hall, belonging to the Fortescues, stands out nobly from the river which sweeps round it on three sides. The valley becomes more wooded and more winding until we reach Torrington, which is supposed to bear some resemblance to Jerusalem, probably because it is built on a hill. It was seized by Royalists in 1641, but they were driven out by the men of Barnstaple, who were themselves dislodged by Colonel Digby, who ultimately took Barnstaple as well. In 1645 Fairfax won it finally for Parliament. Among those who have held the title of Viscount Torrington were George Monk and the father of the unfortunate Admiral Bing.



*A typical Devon Farm*

The road from here to Crediton, by way of **Winkleigh**, is one of the least known and most lovely in Devon. It begins by climbing out of the green valley of the Torridge on to a wild common known as Beaford Moor, which is high enough for us to see the tors of Dartmoor in front, the Cornish peaks on our right, Exmoor on our left, and the whole rich weald in between.

Winkleigh stands proudly aloof on two strongly-moated camps. Domesday allows Devon only one park, and it is placed here. In Westcote's day, "many a pretty tale is remembered here of dragons and fairies", and, as one passes on a midsummer evening, one dares swear, still is. We are completely cut off from the outer world, in



the midst of rich colours with no crowd to despoil nature of her beauty. We are unlikely to meet a passer-by all the way from Torrington up to Winkleigh or down the long gentle slope from Winkleigh to Morchard Road, where we join the road connecting Barnstaple and Exeter, a forty-mile run on the flat with woods and rivers all the way, unexciting except for the church at Atherington, which contains the finest screen in the kingdom, tombs of Champenowners and Bassetts.

*Extract from a book written by one of our foremost travel writers in 1929,  
S.P.B .Mais, 'Glorious Devon' published by The Great Western Railway Co.  
Wood-engraving copyright - Hilary Paynter.*

*Submitted by John Flower*

## **Taw Valley Quilters**

We are a patchwork and quilting group which meets in the small room of the community centre once a month on a Saturday 10-3 (usually but not always on the 4<sup>th</sup> Saturday). We welcome anyone who wishes to join us as we have all abilities in the group, from beginners to those who are more accomplished.

If you are interested just come along  
or for more information -Phone Margaret 01837 83660

## **Sueno Beauty**

**Changes, Exeter Road, Winkleigh. EX19 8HW**

### **Aesthetic, Massage & Holistic Therapies**

- **Swedish Massage**
- **Deep Tissue Massage**
- **Aromatherapy Massage**
- **Hot Stone Massage**
- **Hopi Ear Candles**
- **Reflexology**
- **Micropigmentation**
- **Micro Needling**

**Contact: Gemma Jenkins Tel: 07590233607**

**Email: [suenobeauty@outlook.com](mailto:suenobeauty@outlook.com)**

**Facebook: [@Suenobeauty](https://www.facebook.com/Suenobeauty)**

## Number Puzzle

6			7			4		
2	4				5		8	7
7						2		6
5	2			9				
		6		4		7		
				5			6	9
9		8						2
1	7		8				3	4
		3			1			8

*Solution on page 58*

## Robinson Plant Ltd

[www.robinsonplant.co.uk](http://www.robinsonplant.co.uk)

A family firm with over 30 years experience

All aspects of earthworks, groundworks and hard landscaping  
undertaken including:

Site Excavation and Concreting

Foundations and Driveways

Sewers, Septic Tanks and Treatment Plants

Stone Walling and Paving

Land Drainage and Ponds & Lakes

Riding Arenas and Gallops

Office: 01837 89065      Mobile: 07909 998945

Email: [info@robinsonplant.co.uk](mailto:info@robinsonplant.co.uk)

## Word Search

A	N	O	Y	L	K	M	M	A	T	H	I	L	D	A
T	L	M	A	R	Y	P	O	P	P	I	N	S	D	S
I	E	V	B	V	M	A	M	O	H	A	L	K	O	P
V	S	S	R	E	H	T	O	R	B	D	O	O	L	B
E	M	G	C	I	F	I	C	A	P	H	T	U	O	S
I	I	O	A	P	A	C	E	D	A	C	O	J	Z	O
W	S	Z	Z	A	P	S	E	N	A	A	U	O	O	H
K	E	J	X	Q	A	K	Y	T	R	U	J	T	L	U
N	R	W	U	E	C	I	S	E	D	L	F	E	I	S
Y	A	E	R	I	Y	W	O	N	E	S	F	N	V	U
S	B	G	W	I	A	Z	X	E	D	Z	C	K	E	F
F	L	Q	F	B	A	Z	F	Q	W	L	C	V	R	P
W	E	I	G	L	A	H	C	K	N	C	E	F	Z	U
V	S	U	K	Z	M	A	M	M	A	M	I	A	A	L
D	T	C	A	B	A	R	E	T	M	S	O	T	U	O

BLOOD BROTHERS  
EVITA  
LES MISERABLES  
MATHILDA  
SOUTH PACIFIC

CABARET  
GREASE  
MAMMA MIA  
OKLAHOMA  
WICKED

CATS  
HAIR  
MARY POPPINS  
OLIVER

***Solution on page 58***



### ALL SHINES WINDOW & EXTERIOR CLEANING

- WINDOWS
- GUTTERS, SOFFITS, FASCIAS
- SOLAR PANELS
- HOUSE WASH (SOFT METHOD)
- CONSERVATORIES
- ROOF DE-MOSS
- PATIOS, BRICK, PAVING, DRIVE-WAY



**Tel: 01805 938502 - Mob: 07711079577**

## Solutions

6	8	5	7	1	2	4	9	3
2	4	9	6	3	5	1	8	7
7	3	1	9	8	4	2	5	6
5	2	7	3	9	6	8	4	1
3	9	6	1	4	8	7	2	5
8	1	4	2	5	7	3	6	9
9	5	8	4	7	3	6	1	2
1	7	2	8	6	9	5	3	4
4	6	3	5	2	1	9	7	8

A	N	O	Y	L	K	M	M	A	T	H	I	L	D	A
T	L	M	A	R	Y	P	O	P	P	I	N	S	D	S
I	E	V	B	V	M	A	M	O	H	A	L	K	O	P
V	S	S	R	E	H	T	O	R	B	D	O	O	L	B
E	M	G	C	I	F	I	C	A	P	H	T	U	O	S
I	I	O	A	P	A	C	E	D	A	C	O	J	Z	O
W	S	Z	Z	A	P	S	E	N	A	A	U	O	O	H
K	E	J	X	Q	A	K	Y	T	R	U	J	T	L	U
N	R	W	U	E	C	I	S	E	D	L	F	E	I	S
Y	A	E	R	I	Y	W	O	N	E	S	F	N	V	U
S	B	G	W	A	Z	X	E	D	Z	C	K	E	F	
F	L	Q	F	B	A	Z	F	Q	W	L	C	V	R	P
W	E	I	G	L	A	H	C	K	N	C	E	F	Z	U
V	S	U	K	Z	M	A	M	M	A	M	I	A	A	L
D	T	C	A	B	A	R	E	T	M	S	O	T	U	O

### Lodger(s) wanted

*Character cottage in Winkleigh*

Single room with ensuite: £100 per week

Or double room: £100 per week

Or both rooms: £150 per week

All bills included

Rooms fully furnished. Access to entire house

Phone: Terry 07746817355

# Heating, Cooking & Living.

- Stoves • Range Cookers & Cookware • Renewables
- Flues & Chimneys • Spares & Accessories • Logs



We have one of the largest selections of stoves, range cookers, renewables, spares, accessories, flues and chimneys in the UK. Our knowledgeable and experienced staff are just a 'phone call away or why not visit our showroom just outside Winkleigh?

OPEN MONDAY TO SATURDAY, 9AM - 5PM.

**Telephone 01837 680068**

**[www.rangemoors.co.uk](http://www.rangemoors.co.uk)**



## What's On Diary – 2019

*Please also note that regularly occurring events are not always listed here*

<b>March</b>	
1 <sup>st</sup> at 6.30 pm for 7.15 pm	Refreshments followed by World Day of Prayer, with Methodist Congregation, All Saints Church
2 <sup>nd</sup> at 7.30 pm	Village Hall Quiz (see posters for details).
5 <sup>th</sup> at 6 pm	Pancakes at Methodist Chapel
6 <sup>th</sup> from 2 – 4 pm	Forget-Me-Not-Friends- Community Centre
6 <sup>th</sup> at 7 pm	Ash Wednesday Service, All Saints Church
8 <sup>th</sup> between 12.25-12.45	Mobile Library, Winkleigh Square & Four Seasons
8 <sup>th</sup> at 7.30 pm	'The Music Room', Waie Inn, Zeal Monachorum
9 <sup>th</sup> at 6.30 for 7 pm start	Winkleigh Fair, Mamma Mia, Village Hall
14 <sup>th</sup> from 9.30-11 am	Forget-Me-Not-Friends Advice Surgery- CCtr
16 <sup>th</sup> from 2 -5 pm	Health & Wellbeing Event, Chulmleigh Pavilion.
16 <sup>th</sup> at 7 pm for 7.30 pm	FOWS – Fashion Show, Village Hall
16 <sup>th</sup> at 7.30 pm	Okehampton Choral Society & Orchestra, All Saints Parish Church, Okehampton
20 <sup>th</sup> from 2 – 4 pm	Forget-Me-Not-Friends- Community Centre
21 <sup>st</sup> between 12.25-12.45	Mobile Library, Hollocombe
23 <sup>rd</sup> from 8.30 – 11 am	Chulmleigh Tennis Club Spring Market & Coffee Morning, Chulmleigh Town Hall
23 <sup>rd</sup> at 7.30 pm	Winkleigh Singers Spring Concert, St Michael & all Angels Church, Great Torrington
25 <sup>th</sup> at 7.30 pm	Winkleigh Singers Open Rehearsal, Umberleigh.
31 <sup>st</sup> at 9.30 am	Mothering Sunday (for all ages), All Saints Church
<b>April</b>	
3 <sup>rd</sup> from 2 – 4 pm	Forget-Me-Not-Friends- Community Centre
7 <sup>th</sup> 11.00 am	Mission Community Eucharist, St James, Ashreigney, followed by Lent Lunch

10 <sup>th</sup> from 9.30-11 am	Forget-Me-Not-Friends Advice Surgery- CCtr
12 <sup>th</sup> from 9.30 – 12 noon	Bacon Rolls, The Old Smithy
12 <sup>th</sup> at 7.30 pm	'The Music Room' - <b>Charity Event</b> , Sports Centre
14 <sup>th</sup> at 9.30 am	Palm Sunday, All Saints
14 <sup>th</sup> - See <i>YFC Facebook</i>	YFC <b>Charity</b> Run & Cycle Bike-ride
16 <sup>th</sup> April at 7 pm	Compline with Reflection, All Saints
17 <sup>th</sup> from 2–4 pm	Forget-Me-Not-Friends - Community Centre
19 <sup>th</sup> at 10 am	Liturgy of Good Friday, All Saints
19 <sup>th</sup> evening	YFC Easter Disco, Sports Centre
20 <sup>th</sup> at 8.30 pm	Easter Vigil, All Saints
21 <sup>st</sup> at 9.30 am	Easter Day Eucharist, All Saints
23 <sup>rd</sup> – am & also pm	Flower Ladies "Coffee & Cakes", Parish Church
27 <sup>th</sup> at 7 pm	Britannia Sailing Trust Event, Village Hall
<b>May</b>	
1st from 2–4 pm	Forget-Me-Not-Friends - Community Centre
8 <sup>th</sup> from 9.30-11 am	Forget-Me-Not-Friends Advice Surgery- CCtr
10 <sup>th</sup> evening	Bingo Evening, Village Hall
10 <sup>th</sup> at 7.30 pm	'The Music Room', Sports Centre
11 <sup>th</sup> at 7.30 pm	Concert at St Andrew's Church, Sampford Courtenay
15 <sup>th</sup> from 2–4 pm	Forget-Me-Not-Friends - Community Centre
<b>June</b>	
5 <sup>th</sup> from 2 – 4 pm	Forget-Me-Not-Friends - Community Centre
12 <sup>th</sup> from 9.30 – 11 am	Forget-Me-Not-Friends Advice Surgery- Community Centre
14 <sup>th</sup> from 7.30 pm	'The Music Room', Sports Centre
19 <sup>th</sup> from 2 – 4 pm	Forget-Me-Not-Friends-Community Centre
<b>July</b>	
6 <sup>th</sup> to 13 <sup>th</sup>	Winkleigh Fair Week

*All dates & details are believed to be correct at the time of going to press.*



## And Finally . . . . .

Following the recent snow, have we seen the end of winter, or will there be a sting in the tail like last year? We must hope for better things in the months ahead.

Once again our front cover features another of Peter Monkcom's drawings, as they are really worth seeing again. Also on page 31 is the first of a few sketches drawn by Catherine Knight. We hope to feature more of her sketches in future editions.

As you have probably already seen Rachel and Greg Goldsworthy have written about their visit to 'Wright & Proper' in South Street to find out what is on offer.

Our 'What's On' Diary once again shows what a range of events takes place in the Village and the local area (although this time it does not include cross-references to articles). As well as the quarterly, printed version, **the Diary is also accessible at [winkleighonline.com](http://winkleighonline.com), where it is regularly updated.** If you would like us to include any future items please email them to [articles@distinctlywinkleigh.co.uk](mailto:articles@distinctlywinkleigh.co.uk).

Finally, please note that the deadlines for contributions to the Summer Edition are **Friday 3<sup>rd</sup> May for advertisements and Friday 10<sup>th</sup> May for articles**, so please keep sending in your articles for us to publish. We plan to distribute the Summer Edition over the Spring Bank Holiday weekend.

### **ACCESS** **PHYSIOTHERAPY**

**SUSAN BENNETT**

MSc MCSP HCPC REG

**WITH OVER 30 YEARS  
EXPERIENCE OFFERS TREATMENT**

**FOR:  
ACHES  
SPRAINS  
STRAINS,  
SPORTS INJURIES  
BACK, NECK AND ALL JOINTS**

**DAYTIME, EVENING AND  
WEEKEND APPOINTMENTS  
AVAILABLE. TELEPHONE FOR  
APPOINTMENT**

**01837 83036**

### **JOSH NOON TREE SERVICES**

**Fully qualified and  
insured tree surgeon.**

**All aspects of tree,  
hedge and fence work.  
Quality firewood and  
woodchip.**

**Friendly,  
reliable  
and tidy**



**☎ 01363 83863**

**📞 07792 906258**



*John Short*

Professional Interior & Exterior  
Painting and Decorating

Clotworthy House, Torrington Road,  
Winkleigh, Devon, EX19 8HR

Telephone: 01837 83709

## **W.D & S.J CARNE**



---

*Independent Family Owned  
Funeral Directors*

---



Established over 60 years  
Personal Attention Day and Night

Carney Cottage, Winkleigh, Devon, EX19 8HX  
Email: [wdandsjcarne@gmail.com](mailto:wdandsjcarne@gmail.com)  
Tel: 01837 680199/83387

Pre-paid and Bespoke Funeral Plans Available

## DISTINCTLY WINKLEIGH - PUBLICATION INFORMATION

This newsletter is published quarterly by the Winkleigh Society at the end of February, May, August and November and distributed free to households in Winkleigh Parish.

All information is correct at the time of going to press. The views expressed in submitted material are not necessarily those of the newsletter team or the Winkleigh Society.

All our readers are most welcome to send in Articles (or reports, letters, drawings, etc.) which are likely to be of interest to the local community.

Please note that articles may be subject to editing, primarily for space or layout reasons.

**Articles can be emailed to [articles@distinctlywinkleigh.co.uk](mailto:articles@distinctlywinkleigh.co.uk), or sent to the Editor.**

**The deadline for articles is the second Friday of each publication month.**

**Advertisements from businesses in the local area are also welcome.**

**Adverts should be emailed to [adverts@distinctlywinkleigh.co.uk](mailto:adverts@distinctlywinkleigh.co.uk), or sent to the Editor.**

**The deadline for advertisements is the first Friday of each publication month.**

### ADVERTISING RATES

	Quarter Page	Half Page	Full Page
1 edition	£12.50	£25.00	£50.00
2 editions	£25.00	£50.00	£100.00
3 editions	£37.50	£75.00	£150.00
4 editions	£50.00	£100.00	£200.00

All contributions to the newsletter can be accepted in printed form, CD, memory stick, or as email attachments in WORD, PDF, PNG or JPEG file formats.

---

### EDITOR

**Godfrey Rhodes**, 32 Westcots Drive, Winkleigh EX19 8JP - Tel: 01837 682982

---

### WINKLEIGH SOCIETY COMMITTEE MEMBERS

<i>Chair</i>	Penny Griffiths	01837 83407
<i>Vice Chair</i>	Margaret Miller	01837 83398
<i>Hon. Treasurer</i>	Alan Mulcahy	01837 680145
<i>Hon. Secretary</i>	Philip Griffiths	01837 83407
<i>Committee Members:</i>	Alan Jacobs	Barbara Jenkins
	Royston Naylor	Godfrey Rhodes
	Wendy Oxborough	Rachel Goldsworthy

Winkleigh Society membership is open to all Winkleigh parish residents, who may freely attend and vote at meetings. Further information about the Society and what is going on in

Winkleigh can be accessed online at: <http://www.winkleighonline.com>

---

HEDGEROW PRINT, CREDITON, DEVON EX17 1ES: 01363 777595