

DISTINCTLY WINKLEIGH



Working for Winkleigh



Edition 71

Autumn 2019

Cover sponsored by

Ian Shacklock, MTF Training, Moortown Farm, Winkleigh. 01837 83325

The Winkleigh Society Quarterly Journal

Clotworthy House



Let us help you take the stress out of family or friends coming to visit. Clotworthy, a period Georgian house close to the village centre, offers 4* Gold Award accommodation.

All rooms are large and with good views, and all have en suite facilities with free standing baths or showers.

Give us a ring for availability or send us an e-mail.

Clotworthy House Bed & Breakfast

Torrington Road, Winkleigh, Devon EX19 8HR

Telephone Susan or John Short: 01837 83709

Email: enquiries@clotworthyhouse.co.uk

Web: www.clotworthyhouse.co.uk



**Local Family Run Residential
Sales & Lettings Agent**

**Call us for a FREE
no-obligation Valuation of your Property.**

01837 83393

info@howesestates.co.uk www.howesestates.co.uk

Sell your property from 0% and no upfront fees*

*terms and conditions apply

Winkleigh Society Update



On The Scarecrow Trail: Over 40 scarecrow detectives, maps in hand, walked and talked the village tracking down and recording an eclectic range of straw-filled art.

Every part of the village witnessed strange apparitions appearing: atop hedges, on benches, in gardens and on grass verges, flagging up the Village Hall, climbing into bins, falling out of windows and having an al-fresco hair do!

A rogue scarecrow appeared mysteriously on The Green at Southernhay, too late to be included on the trail, but many of you included Reec the Recycled man in your answers. Might this be from our very own Banksy?

The most votes and prize money of £25 for best scarecrow went to **Woody and Jesse from Toy Story**: a superb duo-creation fashioned by **Jane Bolt**. Hard on their heels (because he was on his bike) was **Brexit Boris** (both of these on Southernhay) and **Trinity's Nan and Grandad** at Elms Meadow followed very closely behind.

The lucky dip prize money of £25 from all those who correctly completed the trail went to **Emma Luscombe**.

Outdoor art is great pro-active fun and we on The Winkleigh Society committee greatly enjoyed organising this for Winkleigh Fair week. Might well do it next year.

James Ravilious Prints: Four evocative prints depicting Winkleigh village scenes and characters from the 1980s have now been bought by The Winkleigh Society, framed and displayed in the small room at The Community Centre. Thanks to Alan Mulcahy, Phil Tarry and Philip Griffiths for hanging them.

Distinctly Winkleigh: Continues to be a major focus for The Winkleigh Society.

Keeping the distribution list up to date is a job on its own. As new businesses appear on the airfield it is vital we make contact with them as we are still working on producing a new **Information Directory**. We are delighted that new and existing businesses continue to support Distinctly Winkleigh. **The Information Directory is also accessible at www.winkleighonline.com.**

Business Forum: Will be the next event The Winkleigh Society committee aims to organise for the autumn.

Penny Griffiths [Chair]

Sequel to Norwegians in Winkleigh Story

Readers might remember that DW ran a story in edition 62 about a Norwegian man, **Andreas Seierstad**, whose father was in the Norwegian Airforce and stationed at Winkleigh during the war. The article included a fascinating insight into his life here through the pages of his diary.

I sent the article to Andreas and he came to visit the airfield along with a friend, Rupert Bose, a short while ago. He wanted to get a feel for the environment that his

father served in and follow up any local information that might be available.



I was lucky enough to get **Steve and Shirley Leahy and Sue Ware** to spare the time to meet with Andreas and to see the mass of documentation and photographs in Steve and Shirley's collection. Andreas was very pleased to be able to see all this history for himself.



I showed them around the various places of interest connected with those wartime years and the airfield operation and we would also like to thank **Chris Maybury** of Moor View for letting us look around the old Nissen Huts on his property where members of the WAAF were billeted. It was a real walk back in time and, although I've been living here just across the road

for the past six years, I have never seen them before.

Andreas asked if it was possible to meet with someone from the **Collihole family**. His father had mentioned how he and two other airmen had really enjoyed having dinner with and being entertained around a piano by an influential person named Collihole following a service at the Methodist Church. Unfortunately we ran out of time to follow this up but **if any reader has any information that might lead to me obtaining a photo of this person I would scan it and email it to Andreas.**

Graham Pearce - grasateba@gmail.com

Winkleigh Football Club News

The beginning of May saw our season ending on a high, with a good win at Halwill Junction. A mid-table position was a healthy situation for the future. This coming season we will be in Division 3, after a re-structuring of the league.

A very successful end-of-season dinner was enjoyed by all at the **Waie Inn**. Sam Burton and Khris Jordan scooped up most of the trophies which were fully deserved.

The summer has been spent on tidying, cleaning and maintenance work in readiness for the start of the new season on 24th August at Pinhoe. Many thanks to everybody who helps the Club, especially the ladies who produce food, hot and cold drinks, and run the bar on match days. Our new Samba goals, donated by people in the Village, have been a great success. The children are already making great use of them.

Robin Knight has taken on the manager's role, assisted by Owen Darch.

We look forward to the new season and hope to see many of you on match days, supporting Winkleigh Football Club. We also now have an Under-16 team, who will be playing matches on Saturday mornings and they would be very pleased if you could come along to watch them play.

Also on 5th October we will be holding a Bingo evening at the Village Hall with eyes down at 7 pm, with Meat Prizes!

Phil G.



CHULMLEIGH COLLEGE

Open Evening

Tuesday 17th September 4.30-7pm

We are delighted to invite prospective pupils from Years 5 & 6 and their parents/carers to meet our teaching staff and take part in activities across a wide range of subjects. Presentations by Executive Headteacher Michael Johnson 5pm & 6pm.

Open Morning: Wednesday 25th September 9-10.45am

Can't make the Open Evening? Join us for a school tour and meet key College staff.



www.chulmleigh.devon.sch.uk 01769 580215 @ChulmleighAT

admin@chulmleigh.devon.sch.uk @ChulmleighCollege

Local Community Trusts – 2019 Grants Available

The **Wright Fund** and the **Old School Fund** are two long established local community charities, both administered by members of the All Saints Church Parochial Church Council and elected trustees, required each year to set aside a sum of money as either grants or donations to residents and organisations of Winkleigh Parish for a wide range of specified educational, recreational or other special needs.

The **Wright Fund** (registered charity 205397) can assist recognised organisations or individuals with grants for recreational or leisure activities or help relieve individual and family needs. The **Old School Fund** (registered charity 306918) provides financial assistance to help young people under the age of 25 resident in the Parish pursue post-secondary education or training.

At present, each fund has the sum of £1,000 available each year to be awarded in the form of individual grants/donations of up to £250 per applicant.

If you are interested in applying for funding from either charity, or would like further information, please pick up an information brochure available within All Saints Church, or by contacting the **Revd. Helen Blaine (Priest-in-Charge)** at **01837-83710** revhelenking@outlook.com or **Collin Gibson (Treasurer)** at **01837-680172** lamcrg@aol.com.

The closing date for all applications is 30th September 2019.

Funds will be made available from 1st December 2019.

Winkleigh POST OFFICE

~ Not just a Post Office! ~

Large range of Greetings Cards, Gift wrap & Tags

Toys & Stationery, Photocopying

Business & Private Banking

of Cheques and Cash

Laundry & Dry Cleaning

Travel Money

Car Tax

Mobile top-ups & electric key charging

Cash Withdrawals at the Counter

Open 8.30 am-5.30 pm Mon-Fri

9 am-1 pm Sat

01837 83427

Owner: Tony Bayley

YOUR COMPLETE ELECTRICAL SERVICE



We have more than 28 years of experience in electrical contracting throughout Devon.

- » Rewiring
- » New consumer units
- » Minor works
- » New installations
- » Energy saving and LED
- » Fault finding
- » Emergency call outs



We'll take care of it.

**Call us now for a
free estimate and advice.**

Winkleigh - 01837 83900

Bedwell Electrical
The Airfield, Winkleigh
Devon, EX19 8DW

info@bedwellelectrical.co.uk
www.bedwellelectrical.co.uk



All Saints News

Summer provides a brief lull in the liturgical year of Church; after Pentecost and Ascension Day we enter in to a period of 'Ordinary time'. Apart from a few festivals, the liturgical pattern is relatively stable and gives all involved in church life time to draw breath before Harvest, Remembrance Sunday and Christmas are upon us once more. You may have noticed that in church the altar frontal and the vestments the priest wears change colour. The colour for 'Ordinary time' is green. Green signifies growth, life and rest. We focus on the teachings of Jesus through his parables and healings, narratives which help us grow in our faith.

The idea of rest in our day- to-day lives is an important one. We need the chance to stop, pause and draw breath because otherwise we run ourselves ragged, and end up exhausted. We need to take time out to do things we enjoy, to find peace, quiet and a chance to rest. It is often much easier said than done and whilst we know it is something that is beneficial to life and health, the demands on our lives get in the way. When everything is busy and there is too much going on, I am reminded that the Gospels tell us of many occasions when Jesus went away from the crowds to rest and to pray. Finding space in our lives to rest when life gets busy isn't just us putting our feet up, relaxing and feeling guilty about it but is rather something that is life-giving and helps us cope better when everything goes a bit crazy. It helps us to grow as people and gives us life. So treat yourself to some 'me time', a rest or doing something you love. If you seek peace and quiet, All Saints is open every day from 9 am to 4 pm for just that!

We had a great time with the Church Fete and the Fair Week Service. We would like to thank everyone who generously contributed items for the Church Fete and Cream Teas at the beginning of Fair Week. Once again, the excellent Duck Dinner was donated by Simon and Sonia Hodgson and we really appreciate their continued support. Thanks also to Barry the Mad Butcher, Red at Londis, Tony at the Post Office and Fran and Keith at Wright and Proper for their generous donations of prizes for the draw.

Church life starts to get busy again fairly soon. We have our Harvest Festival at 9:30 am on Sunday 6th October. On Saturday 2nd November at 4 pm we will be holding a Commemoration Service to remember loved ones who have died, either in the last year or in years past. There will be hymns, prayers, readings and the opportunity to light candles in memory of loved ones. Our thoughts then turn to Remembrance Sunday with a service at 3 pm on Sunday 10th November at All Saints.

The Revd Helen Blaine

01837 83710

revhelenking@outlook.com

Find us on Facebook at 'Winkleigh Mission Community'

All Saints Church Flower Ladies

Winkleigh Fair floral arrangements this year were of summer colours, with an assortment of floral containers being used in the arrangements. The coffee and cake morning held on Tuesday 16th July was very well supported. The entrance porch had a pink theme, contributed by the local Beavers Group, of paper flowers which they had made for the event.

Also our grateful thanks to Peter Howard for playing the organ during the morning. The church was again open for the second year on the Wednesday evening from 6 to 8 pm, when many visitors popped in to view the displays whilst visiting the Vintage Vehicle Evening.

The flower ladies would like to thank all who came along during both events to give their generous support. The funds raised will go towards our flower fund.

Marcia Butt & Linda Millership



Qixx

Winkleigh

01837 83229

Electrical Contractors

- Rewires, New Builds, Extensions
- Consumer Unit Upgrades
- Showers, Cookers, Heating
- Internal / External Lighting
- Sockets & Telephone points
- CCTV & Networking
- Testing & Inspection (inc PAT Testing)





NOTICE OF CO-OPTION IN OFFICE OF COUNCILLOR TO WINKLEIGH PARISH COUNCIL

NOTICE IS HEREBY GIVEN

That following the Uncontested Parish Election held on 2nd May 2019, the Parish Council now has
4 casual vacancies to fill by co-option

Do you have a few spare hours per week to make a difference?

Become a Councillor and have a say in what happens where you live

be a democratic voice for your Community

**Get involved in decision making, community projects, local planning applications, issues
affecting your community**

be part of a team of Councillors representing and working to benefit our community

No Experience Necessary – Full support and training will be provided for free

To become a Councillor, you must be a UK or Commonwealth Citizen; or be a citizen of the Republic of Ireland; or
be a citizen of another Member State of the European Union

Be at least 18 years old

Be an elector for Winkleigh Parish; or in the last 12 months, occupied land or premises in the Parish of Winkleigh;
or your principal place of work has been within the Parish; or live within 3 miles of Winkleigh Parish Boundary

If you would like more information or require an application form to be co-opted

Please contact

Winkleigh Parish Council Clerk

Melanie Bickell, Lower Itton, Spreyton, EX17 5BB

01837 89095 / winkleighpc1@btconnect.com

29th July 2019

This notice will remain current until all vacancies have been filled

Climate Emergency Network: Bottom-Up

Most of you will know that **Winkleigh is part of the UNESCO-designated North Devon Biosphere Reserve**. It covers the entire area of land draining to the Rivers Taw and Torridge, and the sea out beyond Lundy. As an internationally recognised site, ranking alongside the World Heritage Sites, the North Devon Biosphere Reserve is determined to be an exemplar to the rest of the UK, for the sustainable management of the land, and nature. However, the Biosphere system is very different to other Protected Areas, which have traditionally had a 'Top-down' format, so that a government designates a particular Protected Area, sets up a team to manage it, and gives that team some responsibility, some authority and some money (though never enough). **The Biosphere is expected to operate the other way, bottom-up, collating the efforts of many individuals and organisations for the greener future, including the climate emergency.**

Climate change does seem, at last, largely accepted, and acknowledged to be a major emergency. There are some who still believe it is nonsense, just as there are those who believe that the earth is flat, but perhaps now a minority. In Devon many Parish Councils are declaring a Climate Emergency, but are less sure what to do about it, as so many of the obvious levers of power lie in Westminster, or Exeter, or even Torridge DC in Bideford.

S L PASSMORE.
PLASTERING
CONTRACTOR.

ALL TYPES OF INDOOR PLASTERING AND PLASTERBOARDING
AND DAMPROOFING.

20 YEARS EXPERIENCE....
CALL STEVE ON 07584284256
EMAIL: slpassmore23@gmail.com

FIND US ON
FACEBOOK, SLPASSMORE.



SB Plumbing and General Maintenance
Small plumbing repairs
01805 603901
07754819750
Email: sb.plumbing@hotmail.com
Changing taps, washers,
outside taps,
plumbing in washing machines
and
other small plumbing jobs
Also general maintenance work
Just give me a call
for good old fashioned service

Many, though, do understand that **it is the action of individual people and groups who matter**. The answer lies in talking to each other, finding good ideas from all over the area and spreading Winkleigh's own good ideas, whether coming from the council, other groups, or individuals. **Do not ask 'What can the Biosphere do for me? But what can I do for the Biosphere?'** We ask every Parish and Town to nominate a **Climate Emergency Reporter**, who will give a report on progress every year to both the Parish Council and to the Biosphere team. This person may or may not be a councillor, may or may not claim any particular expertise in environmental matters, may do it on their own, but more likely gather a team around them.

Once names have been submitted, networking can start. The Biosphere team will be listening, and will be prepared to help with some expertise, but they will not be telling parish reporters what to do or how to do it. This really is a bottom-up exercise. Before long I trust the Network will decide on some organisation of its own. Then we can really start motoring (electrically of course). I am told that a network of parishes would not find it difficult to access Lottery and other funds.

Over to you, councillors and people of Winkleigh. You do not need to take the slightest notice of this initiative, but you may have to explain to your children and grandchildren why you decided to take no action.

Peter Howard



AIRFIELD
**General Maintenance
& Repair Garage**

- MOTs • Vehicle Diagnostics
- Clutches & Cambelts • Brake & Brake Repair
- General Maintenance • Air Conditioning
- Servicing • Bodywork & Restoration



01837 682 678
www.airfieldgarage.com

Winkleigh Football Club Fun Day

The sun was shining on 1st June for what was a fantastic Fun Day for Winkleigh Football Club and the village. We were very pleased so many faces turned out to support the day. The day started early as club members and volunteers helped to get everything in order, with a bar and BBQ. The bouncy castle and Nico's Creamery were side by side so it wasn't just the football match people could look forward to.

Winkleigh U15's vs. AFC Bideford U15's. Winkleigh's new youth side played their first match against AFC Bideford and came out comfortable winners. In their fresh looking red & white kit, they started the game in a 4-3-3 formation: with Morgan Hallett in goal; Alec Kelly and Ethan Mulholland as full backs; Cameron Bromley and Rob Warren at centre back; Alfie Nicholls, Elliott Barnes and Will Hallett in the centre of midfield; Ciaran Nicks and Freddie Finch positioned on the wings and Grady Pickard in the striker position. Matthew Jenkinson and Charles Suliauskas were on the substitutes bench.

The game started with Winkleigh playing some excellent passing football and



Photo by Greg Goldsworthy

enjoying a high level of possession. On the 25th minute, Freddie scored his first goal after a great ball from Charles, giving Winkleigh a well-deserved lead. On the 30th minute, Freddie put the ball across the box for Ciaran to finish into the net. Just before half time, Freddie scored the goal of the game.



ALL SHINES WINDOW & EXTERIOR CLEANING

- WINDOWS
- GUTTERS, SOFFITS, FASCIAS
- SOLAR PANELS
- HOUSE WASH (SOFT METHOD)
- CONSERVATORIES
- ROOF DE-MOSS
- PATIOS, BRICK, PAVING, DRIVE-WAY



Tel: 01805 938502 - Mob: 07711079577

Matthew, Ethan, Alec, Will, Rob and Cameron all put in excellent shifts when defending. The midfield three Charles, Elliott and Alfie dominated the game with Freddie, Ciaran and Grady causing a lot of problems for the away side. Ciaran then scored his second goal, again assisted by Freddie. A major change in player positions and a 3-5-2 formation then enabled Will to score the fifth goal.

The sixth goal came when Ciaran expertly rounded the goalkeeper to finish into an empty net. Both Freddie and Ciaran were superb and put the opposition full backs in an impossible position to defend against them. The seventh and final Winkleigh goal came from Alfie who created space for himself on the edge of the away side's penalty area and his well struck strike rebounded from a Bideford defender and ended up in the net.

Bideford never gave up and scored the last goal of the game, making the final score 7-1 to Winkleigh, who put on a tremendous display as a few of the boys had not played together before. They managed exceptionally well and were very good.

Winkleigh FC v Barry's Legends. Although Winkleigh started on the attack they were met with stubborn Legend resistance and crunching tackles. After half an hour a typical Robin Knight goal put the Legends 1-0 up. After that an agitated Elliot Brant followed by Ryan Dunster saw a sin bin as the first-half came to a scrappy end.

The teams regrouped, and Barry butch was silently pleased with his team; going in to the second half, his team talk was simple: "DEFEND, DEFEND, DEFEND and if that doesn't work KICK 'EM". Winkleigh tried to remain calm as the 'old timers' were wining.



Photo by Greg Goldsworthy

The second half kicked off with the sun still shining which was good for spectators enjoying a Sam's Cider or a burger but for the players it was roasting. With 20

minutes left came the second goal of the match, a leveller as Elliot Brant cut inside the box and put it past a helpless Steve Johns. The Legends now tiring tried to run down what was left on the clock. A draw for them showed they still could keep up.

The final whistle rang out and mutters of 'this can't end in a draw rang out'. The penalty shootout lasted for 9 rounds that saw Winkleigh FC miss their first two before Tom Robinson stepped up to take the winning penalty, BUT a Robin Knight big toe tipped the ball onto the post and sent it back out to deny the win in dramatic action for the crowd but not for Tom. A calmly slotted home penalty from the Legends missed by Adam Bullen for Winkleigh meant it was all over.

A special thank you to Derek and Margaret Miller for kindly donating the shield. It was very much appreciated and went down a storm for the winning team, who happily paraded it with champagne and smug grins. More importantly thank you both for your loyal service for many years when you have helped the club in so many ways and supported us through thick and thin. Clubs like ours are built from people like you and I hope it will carry on for many years as a result.

Lastly, thank you to all: the helpers as without you it would not have happened; the players for showcasing their skills (or lack of them); Sam's Cider, The Mad Butchers and Nico's Creamery, and lastly everyone who showed up to support us, regular faces or new ones it meant a lot to see everyone coming together as a village and having a 'proper' good time. We hope it can become an annual event.

Tom Robinson



SAM'S CIDER
TIS PROPER DEVON CIDER

Celebrating
100 years
of cider being
made on site

Makers of award-winning proper Devon cider

www.winkleighcider.co.uk info@winkleighcider.co.uk Follow us on Facebook & Twitter

You can visit us at Winkleigh Cider Company, Western Barn, Hatherleigh Road, Winkleigh, Devon, EX19 8AP

Onsite gift shop and local produce

Winkleigh War Memorial Recreational Field Fund (incorporating The Sports Centre)

Once more the Sports Centre & Football Club were able to make a significant contribution to some of the events in this year's Winkleigh Fair Week. It was really great to see so many people at the Sports Centre with the "pub" cricket match being amongst the many successes. A very worthwhile charity event which is gaining momentum from its restart last year. The Trustees would like to thank all who made this possible.

The good weather and holiday season has seen lots of youngsters using the **outdoor play area**. This has recently been refurbished and there is a special thank you to those users who take the time to look after the play area by taking litter home with them. The toilet block is also in use at the present time.

This summer, as always, the **biodiversity area** that is set aside as a haven for plants & wildlife has really come into its own. In July & August, the many flowering plants have been providing plenty of nectar & pollen for bees, butterflies & other pollinators. On one July evening visit five different species of bumblebee were seen. Bumblebees mostly nest in disused grass mouse nests or holes, and there were many red-tailed bumblebees on the flowers. On another visit, there were five butterfly species, including Small Skippers - which only breed in tall grasses. The trees are beginning to show berries & nuts now, ready to feed the birds during the winter. All our records are sent to the Devon Biodiversity Records Centre (dbrc.org.uk). For photos & updates visit our web page: <https://winkleighbiodiversity.blogspot.com/> (contributed by Kim Melhuish).

Please note that all details relating to the Sports Centre have recently been updated on "Winkleigh Online" (www.winkleighonline.com). This should help people get in touch with the right person. There has been a lot of interest in the **Tennis Club** recently and this certainly will help them.

Some of you may remember the **Fitness for Winkleigh (F4W)** initiative. This aims to provide a well-equipped gym in the village on Trustee land, which would be accessible to all. At the time of writing this has failed to secure all of the funding required. The planning committee are considering other options for this much needed facility. Hopefully other avenues can be explored and will prove to be successful.

The Sports Centre has acquired the services of a properly qualified person to provide archery lessons which will take place during the normal hours of the Youth Club (Wednesday 7-9 pm). The Trustees were happy to meet the costs of this person becoming qualified and to provide all required equipment. Further details will be released at the appropriate time.


The Sports Centre is committed to providing a range of activities for the village. The long-standing users continue to support the Centre and their involvement is greatly appreciated. **New users are always welcome so just get in touch via our Facebook page or ring Chairman Mike Wilson on 07703 962927.**

One of the more recent additions to the life of the Sports Centre is the **Kings Arms Aunt Sally team.** The season is drawing to a close for the team and it has been a very busy one with several other teams joining the unofficial league. Iddesleigh, Dolton, Ashreigney and North Molton are now starting to play regularly. The Sports Centre is due to host home games against Chipping Norton, Hartland & the Seven Stars Skittles team in August. The latter game has become the end of season BBQ and game. Thanks to all the Committee members who have put so much into the team all season.

Finally, though it may not be in your thoughts at the moment, the **Sports Centre would like to announce that there will be a pantomime on Saturday 14 December. Cinderella will be performed by the Kings Arms Aunt Sally Team.** It is being "written" by a local author. It is a once only performance and at this stage it will be free but it is expected that tickets will be required beforehand. Watch this space!!!

Tom Radcliffe - Secretary & Trustee

Adam of Eden Tree Care




A friendly, family run company aiming to provide a range of high quality arboricultural services to our customers trees.

Services include:
Tree Removals / Dismantles
Tree pruning, reductions, thinning, shaping and dead wood removal
Hedge trimming
Stump grinding
Tree planting

All work is insured to £5million, complies with relevant British standards and is carried out by appropriately trained and equipped professional arborists

CALL NOW for friendly, professional advice and to arrange a **Free no obligation quote**

TEL: 07398268877
Email: adamofedentrees@gmail.com
Check us out on facebook and instagram: [@adamofedentrees](https://www.facebook.com/adamofedentrees)



Britannia Sailing Trust– Appeal For Timber!

As a follow-up to our recent articles in Distinctly Winkleigh, **we are now desperately in need of timber to start renovation work on Britannia's hull, so we are putting out an appeal for help!** If anyone has any timber that they would be willing to donate to our project, we would be more than grateful, as without it, progress on Britannia's restoration will be considerably slowed down, and this is quite demoralising! We are fit and able now, but time is definitely not on our side and we cannot afford to delay!

Britannia Sailing Trust is a registered charity and it is our aim to restore this 104 year old historic vessel and then use her for sail training, based on the North Devon Coast, and for education about ocean pollution, plastic waste and climate change – a very topical subject just now, and rightly so.

This is our wish list for timber, which is quite specialised.

- For planking we need north slope grown **European Larch**, not hybrid or Japanese, with a large base diameter of 24" – 30";
- We also need slow-grown **Douglas Fir**, again north slope grown, for some of the deck, most of which we are hoping to save rather than replacing the whole deck;.
- Any **Douglas Fir baulks**, that have been removed from old buildings, of a decent size, or any other type of timber of large sizes that are pre-used might be of interest as well;
- We also require **oak crooks**, the more bent the better! 10" minimum diameter. These are for replacing knees that have been removed unnecessarily by a previous owner.





Our volunteers are busy just now descaling rust from the ballast, and painting the iron pigs ready to be reinstalled in the hull, clean and tidy. We are so grateful to all our volunteers for helping us, particularly when they cheerfully undertake not very pleasant or inspiring jobs!

However, getting sufficient good quality timber to progress the project is a priority right now, so if anyone has anything that may be of use to us, or knows anyone else that has, we would be very grateful. Please get in touch with Sam on 07543 278341, or email us at haydnsam27@gmail.com.

Please have a look at our Facebook page www.facebook.com/britanniasailingtrust for regular updates – we are always glad to welcome new volunteers!

*Vicki Samuels (Chair) Britannia Sailing Trust,
Seckington Cross, Winkleigh*

Jenny Rock

Rock Solid Book-keeping Solutions
Creating order from Chaos!

Collacott Lodge,
Winkleigh,
Devon EX19 8LE

Mobile: 07743 683 756

Email: rocksolidbookkeeping18@gmail.com

Book-keeping, Bank reconciliations, Creditor & Debtor Reports.
VAT Returns, Accounts to Trial Balance, Liaise with Accountants.

Temporary, 'One-Off' and Permanent Contracts undertaken.

Friendly, helpful advice for small businesses.

Accounting experience in:

Farming, Manufacturing, Pub, Convenience Store and Retirement Homes

CIMA Advanced Diploma in Management Accounting.

Association of Accounting Technicians NVQ IV.

Winkleigh Parish Council Update - May to August 2019

Council Membership: Following the uncontested elections in May, 7 Councillors were elected, which leaves the Council with 4 vacancies that can be filled by co-option. If you would like more information on what being a Councillor entails and/or details on how to become a local councillor and become a democratic voice for your community, then please visit the parish council website, www.winkleighpc.org.uk and download the application pack or contact the Council Clerk, Mrs. Melanie Bickell winkleighpc1@btconnect.com or phone 01837 89095.

Training courses are available to new Councillors to help boost their knowledge in the areas of business that the council deals with - i.e. new Councillor training course, finance and planning, with full support and mentoring from the Clerk and fellow councillors.

Come along to our next meeting and observe what the council does on your behalf.

Neighbourhood Plan: Winkleigh's draft Neighbourhood Plan completed its Regulation 14 consultation at the end of July. The Neighbourhood Plan group and the Parish Council would like to thank everyone who took the time to come along to the consultation events and who completed the questionnaire. The group will be reviewing all responses from the public and the statutory consultees and will make its recommendations for responses to all comments in the coming months.

Emergency/Community Resilience Plan: The parish council is currently in the process of updating the parish Emergency Plan as a result of recent guidance from the community resilience plan forum.

Volunteers are needed to join the Community Resilience Plan group which would meet once or twice a year to review the plan. If an emergency occurred, for instance a thatch fire, aircraft crash, major road traffic collision or major fuel spillage, the group members would be familiar with the plan in order to help emergency services with evacuations and most importantly local knowledge. If you feel that this is something that you might be interested in, then please contact the Clerk (details above).

The Parish Council is trying to compile a list of addresses where occupants may require assistance to evacuate in the case of an emergency. Help could range from needing transport to the emergency shelter, to a helping hand to make the evacuation easier. If you would like to be added to this list then please contact the Council Clerk (details above). Your details will remain confidential and will only be shared with emergency services/plan members who attend any emergency evacuation.

The council is also trying to compile a list of "local assets". This covers a range of willing people/equipment/skills in the parish, e.g. with chainsaws to assist with

removal of fallen trees or branches that may be preventing emergency services from gaining access, or people with tractors and/or trailers. Being on this list does not mean that you will be expected to help in any emergency, but it does give the Plan team a list of people that they could call to ask for assistance. If this is something that you feel you might be able to do then please contact the Clerk (details above); the only people who will have access to your details other than the Clerk are Cllrs on the plan team, otherwise your personal details will not be shared.

Highways “doing what matters” scheme: DCC Highways are trialling a new scheme to see if there is a more efficient way of dealing with highways matters e.g. potholes. The new highways team have invited representatives of the council to attend a meeting with them in order to provide local insight. By the time you read this the meeting will have taken place. If you want to know the outcome of this meeting, we will be making a report to the Council on the 25th September in the Village Hall at 7.30 pm so please feel free to come along.

Cllr Alice Turner, WPC Chair

Neighbourhood Plan Exhibition – 21st June



The Winkleigh Singers

A full house at Umberleigh Village Hall was welcomed by the choir when they performed **Purcell's 'King Arthur'** on a lovely summer's evening in June. The musicians were made up of diverse members of the choir and included harpsichord, 'cello, violin, crumhorn and recorders - giving a period feel to the performance. The semi-staged production added Baroque humour to the narrated story.



The Cold Genius arises from the depths, encouraged by Cupid, creating a freezing atmosphere for the Frost Scene. He is eventually warmed by Cupid!

Thanks to Sam's Cider for supplying 'The juice that makes all Britons bold'!

There will be an **open rehearsal** for anyone who would be interested in joining the Winkleigh Singers (tenors and basses especially welcome!) on **Monday 2nd September at 7.30 pm in Umberleigh Christian Fellowship Building**, on the A377. Please let them know if you would like to come along so they know how many seats to put out. See the website for details www.winkleighsingers.org.uk or subscribe to our secure mailing list by sending us a message



The Winkleigh Singers

Registered Charity Number
117121

Future Concerts will be: A rare performance of Charpentier's Mass for Four Choirs on **24th November in the Marwood Community Hall at 7 pm**. It will be a joint project with Artavian Baroque orchestra and singers.

The Christmas Concert at Winkleigh Parish Church Saturday 14th December with a repeat on Sunday 15th December in Chittlehampton Church. Programme includes Handel's Messiah (the Christmas section) and plenty of carols for all to join in.

Winkleigh Football Club Sponsored Walk

Winkleigh Football Club is very keen to support Craig and Chloe Dennis after Craig's horrible accident falling from a roof.

We are organising a '**Sponsored Walk**' from **Winkleigh Football Club to North Tawton Rugby Club Ground**. Plans are in progress to hold it in September or October on a Saturday or a Sunday. We will be advertising the details when arrangements are all in place, via Shops, Pubs, Notice Boards, Facebook, etc.

Winkleigh Fair - Poetry & Pies Evening

As part of Winkleigh Fair Week the evening of 'Poetry and Pies' in All Saints' Church was deemed a great success by those who were there.

This was the third time the event had been held and as always the variety of both poems and pies was delightful. The poems (and some prose) were both classical and modern, including a few written by local poets.

We laughed and we cried and were thoroughly entertained. I think it is safe to say that the cultural future of Winkleigh is assured.

A big 'Thank You' to those who read to us, to those who baked pies, to those who came on the night just to enjoy themselves and to all who helped. We look forward to repeating this event in future years.

Sylvia Smith



**General Building Works
Period & Listed Building Renovations
Maintenance & Repairs**

For a free, no obligation estimate, please call:

01837 83890 • 07541 002017

info@obcd.co.uk www.obcd.co.uk

Down Farm Organic Mixed Salad reaches finals of UK Organic Awards

Down Farm Organic Mixed Salad, which is grown at Down Farm on Winkleigh Airfield, reached the finals of the Soil Associations Best of Organic Market (BOOM) Awards 2019. The salad was in the best of fresh produce category and up against organic tomatoes from the Isle of Wight, and organic asparagus grown up in Lincolnshire. Although we did not win, both Henry Allison and I are very proud to have reached the finals with our salad which is produced at our micro-farm here in Winkleigh.

Our salad is available to buy in the Mad Butcher's all year round, along with other produce from the farm, and is also served at the King's Arms.

To celebrate Organic September we will be hosting another Farm Tour. Join us in the evening of Thursday 12th September from 6 pm and learn more about how we produce our salad and our other organic veggies using no-dig farming. £5 pp and kids go free.

For more info about Down Farm or to book your space on our evening tour visit www.down-farm.com.

Olivia James



DOWN FARM
Growing food feeding the community

Fresh, delicious, organic veg from our farm in Winkleigh. Visit our online shop/call to order.

Collection points in Winkleigh and surrounding areas.

VEG BOXES AVAILABLE JUNE - DECEMBER
VEG AVAILABLE IN MAD BUTCHERS YEAR ROUND

Contact farmers Olivia & Henry
07739892488 | www.down-farm.com | hello@down-farm.com

Our Devon County Councillor Writes



I hope readers have been enjoying the lovely weather we have been having (so far!) over the summer. I would like to start by congratulating the Winkleigh Fair Committee for another successful Fair. I was lucky enough to attend both the Opening and the final Fair Day and it was great to see so many people taking part. I know it is an extremely hard job to organise events like these so my thanks to the Committee and all those who volunteered to help make it such a successful event.

Writing this article in August, it is relatively quiet at County Hall at the moment, though I am continuing to work on a number of local matters. There are also some important consultations taking place that I would encourage readers to participate in.

The first is a consultation that is taking place on the **NHS's Long Term Plan for Devon**. This Plan will be an important document that will shape how our healthcare in the County will look in the future. You can find out more information here: - <https://www.devonstp.org.uk/get-involved/better-for-you-better-for-devon/> and take part in the survey here: - <https://www.surveymonkey.co.uk/r/BetterDevon> Engagement on the Long Term Plan will take place until 5th September.

The second consultation taking place relates to the **Fire and Rescue Service**. The Service is remodelling how it uses its resources based on the risk profiles of local communities in Devon and Somerset. They are currently proposing to close eight of the existing 85 stations although **I must stress that there is no threat of closure to any of the local, rural fire stations** based near Winkleigh, such as North Tawton, Chulmleigh, Torrington, Hatherleigh or Okehampton.

More information on the consultation and how to take part can again be found online here - <https://www.dsfire.gov.uk/SaferTogether/> and the consultation will be open until 22nd September. For those of you not online, if you write to me (address below) or ring me I am happy to provide you with hard copies of each consultation survey.

On more local matters, the operating hours of the wood disposal plant on the Airfield has been causing a lot of concern lately and I am working with both the County Planning Officers and District Councillor Simon Newton to see what, if any, enforcement action can take place and how we can improve the monitoring of the site. At the time of writing this work is ongoing but as and when there are developments I will endeavour to keep readers updated.

On local Highways matters, in August representatives from the Parish Council will be meeting with Highways to discuss local road and highway related priorities in the

Parish. This is all part of the Highways Trial which aims to pilot different ways of working. As part of this trial, officers from Highways will be going out and **driving every single road in Winkleigh and Torrington Rural**, so by the time this work is completed they will have a much better understanding of our local needs. Again, as this project continues to develop I will keep readers updated.

As ever, if I can provide any assistance on a County Council issue please do not hesitate to contact me. You can ring me on 07886 446560 or email andrew.saywell@devon.gov.uk.

Andrew Saywell
Devon County Councillor for Torrington Rural (covering Winkleigh)
Little East Badworthy Farm,
Shebbear,
Beaworthy,
Devon,
EX21 5RQ



Winkleigh
CLOTHING CO.
Print & Embroidery Services

BUSINESS BRANDED CLOTHING

WORK & SAFETY WEAR

SPORTS TEAM KIT

SCOUTS & GUIDES UNIFORM

SCHOOL UNIFORM

GIFTS & PARTY ITEMS

*Professional, affordable, good quality personalised workwear
with NO minimum order*

Winkleigh Clothing Co. (Bissetts Garage), Exeter Road, Winkleigh, EX19 8HW

01837 682827

www.winkleighclothing.co.uk info@winkleighclothing.co.uk



Winkleigh Fair

One can always tell when it is summer in Winkleigh – I am writing this and listening to a weather forecast that tells me there is going to be heavy rain and high winds in the next day or so – hey ho! Devon in summertime.....

This was not, however, the case for Fair week in July. We were blessed with sunshine and almost cloudless skies for each of our outdoor events. That was reflected in the high number of people who came and supported the Fair during the week. The Committee sends huge thanks to everyone who came along or who helped in any other way.

The week began with the Village Hall bursting at the seams for the **Fair Quiz Night**. We managed to get just under 150 people in, all seated at tables, and we had a fabulous evening.

The **Official Opening of the Fair** was carried out the following day when a large crowd was entertained by award-winning **Hatherleigh Silver Band** before they led a procession into the Church for the traditional service when eggs and flowers were donated to be distributed appropriately in the Village. The congregation then processed back to The Square where Reverend Helen blessed the well which had been beautifully adorned with flowers. It was good to see the well in full working order, something which some residents had never seen.



Margaret and Derek Miller proudly formally opened the Fair and crowned the 2019 King and Queen, Archie Bridgman and Penny Garland, both of whom looked quite striking in their outfits. It was fitting that Derek was there to open the Fair. He has lived, man and boy, in Winkleigh, has seen and been to more Fair weeks than anyone else and will see his 90th birthday in early September. **Congratulations Derek!**

Tuesday heralded the **All Saints Church Flower Ladies coffee morning** followed by a wonderful floral display of their skills in the Church the following evening.

Vintage and Classic vehicles took centre stage on Wednesday evening with The Square packed with people and vehicles, some of which we had seen before but many others which were new to the event. Augmented by hotdogs and burgers, everyone had a brilliant evening. Those who weren't ready to go home at the end were able to perform and listen at the Open Mic evening in the Seven Stars.

Thursday was **Movie Night** and we screened a fabulous film, "Stan & Ollie" to another packed Village Hall. This was a very funny and moving film which was in no small way enhanced by Ben & Jerry ice cream in the interval!

Friday saw a most welcome new addition to the Fair programme. All Saints Church organised a **Poetry and Pies Evening** which raised funds for the church. This was an exceptionally entertaining evening of poetry, prose and song from villagers. The result was an eclectic mix, some of which brought a tear to the eye, others making you laugh. Those who heard it will never hear the Twelve Days of Christmas again without thinking of the wonderfully comic delivery from Jean Fletcher! The evening was well and truly enhanced by the provision of pies of all sorts and wine.



And so we came to **Fair Saturday** and a change to the usual schedule of the market in the morning and the Fair in the afternoon. Firstly, the **clay pigeon shoot** was arranged for the afternoon which proved to be very popular, as many could take the short walk between the two and enjoy both events on the same afternoon. Thanks are due to **Ian and Sian Rule** for organising and running the shoot on behalf of the Fair. We were also able to bring the market and the Fair together on a beautifully sunny day and the crowds flocked in. Lots of games and attractions were there for people to enjoy and it was a welcome return for the ever-popular



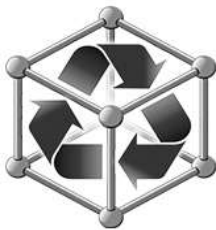
alpacas. The **Tug o' War** proved to be both enjoyable and competitive! I'm happy to say that the ladies of the village out-pulled the men but the balance was redressed when the boys (just!) defeated the girls over three rope pulls.

We were also delighted to welcome the **Winkleigh Primary School Choir** onto

the stage to entertain us with some wonderful singing.

Saturday evening arrived when the band **Stillyano** took to the stage and rocked the Village to its core! A very talented band, a full Square, some excellent hot food from Rich and Faye at the Kings Arms and good weather – we couldn't have asked for a better way to finish Fair week. Once again, Winkleigh rocked!

Another welcome return to the week was the **Scarecrow Competition**, organised and run by Winkleigh Society. Some 20 entries were received and through the week villagers were invited to vote for their favourite. There were some wonderfully creative pieces including Boris Johnson on a bike, but the winning entry went to **Jane Bolt** for her **Woody** and **Jess** creations from **Toy Story 4**. Well done Jane!



Twixtmoors ~upcyclers~

Autentico Paint Stockist

Used, Upcycled and Painted Furniture

Reupholstering and Recovering Chairs, Sofas and Ottomans

Workshops and Training (at your place or ours)

Bespoke Commissions

Sandblasting and Stripping

Tel: 01837 83148

www.facebook.com/twixtmoors

Info@twixtmoors.com

www.twixtmoors.com


Autentico®
INSPIRING PAINTS

Unit 2

The Airfield

Winkleigh EX19 8DW

(on the Bedwell site)

Opening hours - we are here most days from 9 am til 6.30 pm

Should the front roller shutter door be down, please use the first entrance on the left hand side of the building

So, another Winkleigh Fair has come and gone, and thoughts now turn to fund-raising for Christmas, only a few months away, and for the Fair in 2020. **Your Fair Committee is into its 4th year and several of us are standing down to make way for fresh blood and new ideas.** By the time this drops through your letter box we will have held a public Extraordinary General Meeting at which me, Kay, Julie, Sally and Kirsty will be standing down. That will mean that, for the Fair to continue strongly into 2020 and beyond, it will require a new Chair, Treasurer, Secretary and as many Committee members as it can muster. In a village with a population of some 1700 people **I'm sure that 6-10 individuals will be able to take on this mantle to ensure that this great and historic Fair that has, in one form or another, been running for over 750 years, will continue into the future.** We have thoroughly enjoyed the rewards that running Winkleigh Fair brings and thank all those who have supported us over the last few years.

Finally, sincere thanks go to Stone Naylor who readily gave his permission to use his wonderful photographs in this article.

Tony Aston

Village Hall - Plea for Help

Winkleigh Village Hall is in desperate need of some professional help in order that essential works can be identified and carried out.

As a registered charity, the hall is seeking grants from several sources to go, in particular, towards renovating its main room sprung floor and stage. However, before funds can be granted there needs to be a professional survey carried out so that an accurate report can be compiled as to the work that will be required.

Additionally, the entire interior is badly in need of redecoration and, in part, repair.

We are seeking a structural engineer/building surveyor who might be able to volunteer to offer some time to compile such a report in order to support grant applications. We are also looking for painters and decorators who might be able to help on a volunteer basis in due course when such work is scheduled to be carried out.

The Village Hall is a wonderful and historic building. If you are able to offer some time to help then please contact the Secretary, Kay Aston, on 07398 234579.

Let's get our hall looking great once more!

From our Torridge District Councillor



Climate Change:

Torridge District Council (TDC) joined with many others including Devon County Council to declare a **Climate Emergency** and have set the ambitious target of 2030 for the Council's activities to be carbon neutral (DCC have set 2050). Councillors felt it necessary to set the earlier date due to the urgency of the climate change situation. TDC have had a Carbon Management Programme since 2009 and have managed to reduce their carbon emissions by 16.3% up to 2017 (and saved over £300,000 through reduced energy consumption). I will update you further once more details are known.

Letting our MP know your views - Survey:

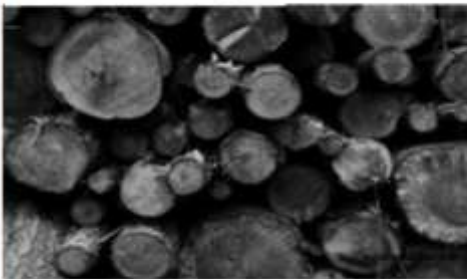
Following on from his Winkleigh village consultation on 12th August, Geoffrey Cox is conducting a survey to capture the views of local residents. Amongst others, the survey covers the environment, local health services, the NHS, public transport, road conditions, Winkleigh village centre, crime and anti-social behaviour, local policing and broadband connectivity. You can complete the survey online by visiting **www.geoffreycox.co.uk/survey** or you can collect a paper version from the village Post Office. I would encourage as many people as possible to complete the survey so he gets a realistic feel for how local residents view these important subjects.

Simon Newton

Tel: 07943 830220

Email: councillor.newton@torridge.gov.uk

Local Logs



Dry seasoned hardwood

All stored under cover & delivered in
Chulmleigh & surrounding area.

Truck Load £80

Double Load £160

Trailer Load £270

Net of Logs £4

Net of Kindling £4.50

Martin 07817 464420 parish@btinternet.com
www.mpccontracts.co.uk

Scarecrows on Parade!

Rachel Goldsworthy has kindly photographed all the scarecrows for Distinctly Winkleigh, so here they are in the numerical order on the Trail Map:



Scarecrows on Parade!



*Thank you to all who
made and displayed
a scarecrow*



**Ladies & gents
Hair and Beauty salon**

For all your hair and beauty requirements

A friendly and local salon

*Telephone 01837 83004
Exeter Road, Winkleigh*

**Established
over 30 years**



TERM TIME TENNIS COURSES

Juniors

3 to 18 years old • Weekday afternoons
& Saturday mornings • Classes for all
abilities: Beginners, Improvers
and Performance

Adults

Classes available during the day & evenings
• Beginners/Rusty racquets • Intermediate
players/Club players • Cardio Tennis

Autumn Term Dates

Monday 9 September
to Saturday 14 December 2019

locations

BARNSTAPLE	Park Lane Tennis Club, Rock Park EX32 9AH
BIDEFORD	Bideford College, Abbotsham Rd EX39 3AR
BRAUNTON	Braunton Tennis Club, Wrafton Rd EX33 2BP
CHULMLEIGH	Chulmleigh Tennis Club, Beaton Rise EX18 7AA



To book email: bookings@devonshiretennisacademy.com
or call: 01271 600855

WWW.DEVONSHIRETENNISACADEMY.COM

Storage containers to rent near Winkleigh

20 foot x 8 foot x 8 foot high

Long or short term rentals, from £20 per week

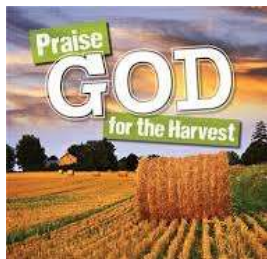
For more details please call Julian on 07947 877284

or e-mail julian.tolley@btinternet.com

W H T Letting

What's going on at Winkleigh Methodist Church?

A big thank you to the Infusion Team for leading our summer Holiday Club, 'You've got a friend in me'. Thank you also to all the volunteer helpers and everyone who came along!



HarFest!

This year, instead of celebrating Harvest in our Church building, we will be heading to Higher Punchardon Farm (Fiona's Farm Shop) on **Sunday 22 September** for an



afternoon of fun, activities, food and praise. This will be a family fun day for all of the community - £1 per person entry (including parking) with all activities free! All children must be accompanied by an adult. The day will begin with a tractor run and lunch for drivers and passengers who have booked (please see details on the page after this article.)

2.00 pm The field will be open to everyone to come along and see some **classic tractors and vintage farm implements**

2.30 pm **Celebration service in the barn** led by the Very Revd Graham Smith. **Music provided by the band 'Free Signal'**

3.45 pm **Tractor parade**

4 - 6 pm **Cream Teas / BBQ & Tuck Shop / Activities:**

Inflatable assault course for all ages

Lawn mower time trial

Wurzel 'Lympics

Really Wild Learning - opportunity to get 'hands on' with some **mini beasts, frogs, tortoises, lizards and snakes!**



Profits will go to **CLIC Sargent** and the **Freedom Centre, Barnstaple** (day centre for homeless, vulnerable & disadvantaged people, including support for problems with substance use).



Food Bank: A reminder that donations for the food bank based at Okehampton can be dropped into the Methodist Church (open for Sunday services as listed below and also open on **Wednesdays** for Oasis from 11 am – 2 pm).

Our regular activities continue

Sunday worship begins at 11 am with coffee served from 10.40 am. Sunday School and SOW for teenagers runs at the same time. Every first Sunday in the month we meet at 5.30 pm (café church) or 6.30 pm (Recharge, youth focus) instead of 11 am and have an informal time of worship and bring-and-share food. Please see our notice board for more details.

SPACE Youth Club runs on the second and fourth Friday of every month: Years 5 & 6 from 7 to 8.15 pm and Year 7 upwards from 8.15 to 10 pm - £1 entry fee and a tuck shop available for anyone wanting to buy a snack.



Oasis Café Winkleigh Methodist Church now held on Wednesdays (instead of Mondays) with a home-cooked two-course lunch being served at 12.30 pm (coffee, lighter lunches or cakes also available). All ages welcome – please pop in.

All worship times and preachers are on our notice board outside the chapel along with any other special events.

If you are on Facebook, you will be able to keep up to date with what's happening at our Youth Club on the **SPACE** page.

For more detail about church life or prayer requests please contact any of the people below, or any other church member, and we will be do our best to help you.

Alan and Fiona Marshall 01837 83809 / Pam Down 01837 83674

**HarFest
Vintage & Classic Tractor Run
22nd September 2019
at Higher Punchardon, Winkleigh**



**Depart time - 10 am
Meal: Tractor drivers £12/passengers £8**

To book - telephone 01837 83382

*Organised by Winkleigh Methodist Church
Money raised goes to CLIC Sargent*

**BROADWOODKELLY
VILLAGE DAY / NOVELTY DOG SHOW**

**Something for everyone on
Saturday 7th September 2019**

**Commencing at 12 noon with
Novelty Dog Show.**

**11 classes + Show Champion
(Contact Melanie on 01837 682679)**



Activities during the afternoon:

**BBQ and Bar / Wildlife Quiz (prizes for the winners)
Children's Games / Name the Cow / Raffle / Tombola**



**Stalls: Cakes / Teas / Good as New
Body Shop / Air Ambulance
Books / Plants**



CREDITON FLOWER CLUB

Is holding an Open Demonstration

given by

Edward Moorman

(Owner of Trugs of Exeter)

entitled

"At Summers End"

At

Sandford Parish Hall, Sandford

on

Thursday, 12th September 2019

commencing at 7.30 pm

Cost £10 including light refreshments

(Members £5)

Pay at the door on the night



HC Joinery

Bespoke Joinery Services

Harry Colgrave

Joiner

All aspects of joinery work undertaken.

Doors, windows, panelling, door canopies/porches, restoration projects, repair neglected doors and windows.

hec2010@hotmail.co.uk
07517110668



Summerhayes, Ingleigh Green,
Winkleigh, EX19 8AT

Life on the Verge

Winkleigh has made a start on surveying its verges for **Life on the Verge**, a project to protect and enhance the wild flowers along our roadsides.

On a sunny July morning, we donned our Hi-Vis jackets and - armed with a guide to grassland plants - surveyed the verge at Townsend Hill Corner.

It is a surprisingly rich habitat, a stranded triangle of biodiversity created when the new bypass was built in 1987. This verge still contains the original ancient hedge-bank with trees: oak, copper beech, hazel and ash.

So, what did we find there?

Most frequent: nettle, bramble, herb robert, creeping thistle, hog-weed, dandelion.

Occasional: red campion, bluebells, tufted vetch, ribwort plantain.

Rare: honeysuckle, bryony, common comfrey.

The verge was teeming with life: Bumblebees (white or buff-tailed, tree and early), short-tailed field vole, beetles (including a lovely black and yellow longhorn beetle) and spiders, alongside other pollinators, such as flies, wasps and solitary bees.

Need Help In The Garden?

RHS Qualified, Experienced Gardener

All Aspects of Garden Maintenance

Planting Ideas

Year Round Reliable Service

Call Maxine on 01837 680039 or 07815 309023



We have posted off our findings to “**Life on the Verge – Biosphere**” to add to their records. They also have a website and Facebook page.

If you are interested in surveying or improving a verge near you, please get in touch with Jo Pullin (Co-ordinator) or Kim J Melhuish (on Gmail or Facebook), from the Biodiversity Group.

You don't need to know a lot about wild flowers, as a leaflet-guide is available to help you identify the most common ones.

Kim Melhuish & Penny Griffiths

Talented Winkleigh Youths

Budding Actor: Taking the lead role of William Beech in North Tawton's production of 'Goodnight Mr Tom' was **Matthew James** from Winkleigh.

Matthew gave an impressive and touching performance as a troubled young evacuee who is put into the home of Tom Oakley a curmudgeonly old widower. Aghast and reluctant as Mr Tom is to have a child foisted upon him, he quickly realises that the child is troubled, disturbed and illiterate. The two learn to trust and depend on each other and when William is told to return to London, Mister Tom is so concerned he follows him there, rescues him and eventually (overcoming many obstacles) adopts him.

Matthew was rarely off the stage and gave an impressive performance; as he becomes transformed by the fatherly kindness and practical wisdom of Mr Tom.

Directed by Twiggy Lake this was a thrilling performance by A.N.T.S. with a spectacular no-holds-barred immersive blitz scene.

Netball Honours: Go to **Rowan Fitzsimmons** who plays for the Barnstaple - based Titans Netball Team. She is part of a 'Dream Team' who were victorious at The South West Regional U19 Tournament in Paignton in June.

Torridge District Council funds a **Home Improvement Loan Scheme** for homeowners and landlords*.

We understand the expense of maintaining your home. We want to help you to take the stress out of funding repairs, improvements or adaptations to your home.

We see you as an individual,
not a credit score.

For a free, no obligation home visit or more information:

**Contact Wessex Resolutions CIC on
01823 461099 or visit**

www.wessexresolutions.org.uk

***Subject to eligibility**

Rowan, who attended Winkleigh & Chulmleigh Schools and is now at Petroc, is planning to study modern languages and International Relations at University if she achieves the required grades.

Penny Griffiths.

Editor's Note: We hope to be able to feature other Talented Youths from Winkleigh in future editions.

QIGONG and TAI CHI in Winkleigh Village Hall

Qigong sessions take place on Thursday Mornings at 10.30 am and the new term begins on 12th September. **We are always pleased to welcome newcomers.** The Qigong exercises we perform are simple and gentle and, though appropriate for all ages, are particularly suitable for folks "not in the first flush of their youth"! They contribute to maintaining our physical and mental health, and to increased energy, balance and flexibility - qualities to be appreciated as the years advance. It's just £2.00 a session - the session concludes at 11.30 am. We ask people to wear comfortable clothes and flat shoes. Come and give it a try.

For those happy to take on a further challenge a short Tai Chi session follows at 11.45 am (at no extra charge). Tai Chi consists of a series of connected flowing movements (a Form) which newcomers gradually learn week by week. If it would be helpful to talk about it first - ring John Williams on 01837 83817.

Or feel welcome just to turn up!

WANTED.....for Winkleigh Growers at the Allotments

GOOD MANURE.....DELIVERED please to the Sports Field. We will PAY!

Offers to the Secretary - Pam Berry - 01837 680193



War Horse 10K

Sunday September 22nd 2019 @ 11am

Iddesleigh Nr Winkleigh EX19 8BG

Stunning 10K with cracking views of
Dartmoor.

The race starts and finishes in the beautiful village of Iddesleigh and will include some private land.

This is a scenic 10K, 90% of which will be on the road.

All finishers to receive a t shirt and medal

Entry fee £16

Online entries via webscorer

<https://www.webscorer.com/register?raceid=165936>

For more info please visit our Facebook page War Horse 10

Or phone 01805 804347

A donation will be given to the North Devon Hospice

Forget-Me-Not-Friends Advice Hub

Second Wednesday of each month

Winkleigh Community Centre

The Winkleigh Community Advice Hub brings together under one roof, a partnership with local voluntary organisations who will provide you with high quality Information and Advice, and support you to access services that meet your individual needs and circumstances.

Our hub provides local advice on navigating the health and social care services available to them, as well as giving them basic advice on health and wellbeing queries. We see this as being especially effective for the elderly living alone, Carers, and those who are feeling isolated or unsure who they should speak to about Health and Social Care related issues.

Bringing health and wellbeing help directly into communities – providing care and support closer to home – is going to be extremely positive for local people.

The Advice Surgery is a safe and confidential environment to discuss health related topics including: emotional wellbeing, Financial/Benefit advice, confidence/self-esteem, as well as signposting and referrals to other services if needed.

Contact Trish Burke 07811574765

A Will Prepared by a Retired Former Solicitor

After graduating in Business Studies (1974) I qualified as a Solicitor in 1979, and for many years owned my own firm of solicitors before selling and choosing a simpler life.

I am no longer a solicitor. I can now offer my expertise but without the high overheads, especially as my part-time work is carried out from home.

Consequently I am able to prepare you a new Will for £100 with no V.A.T. charged.

Ivan Sanders, 8 Elms Meadow, Winkleigh EX19 8JU.
T: 01837-682888 E: sanderslongdrive@yahoo.com

Long Lost Family

Winkleigh has featured several times on National and local news, but earlier this year Panorama, the BBC's flagship documentary programme, put the spotlight on the village once again as it related the story of how **Amar Kanim from Iraq** came to live in Winkleigh as the adopted son of Emma Nicholson, the Conservative MP for Torridge & West Devon at the time.

In 1991 Emma Nicholson was in Iraq when Amar was found with terrible burn injuries and seemingly with no family survivors. Amar had been very badly burnt by napalm, one of the many victims of Saddam Hussein's relentless campaign against his own people, the Marsh Arabs.

Coming to live at 'The Croft' he formed close friendships with village boys, that endure today. He was initially enrolled at Chulmleigh School, but he also had a tutor/translator to help him with the language. He certainly caused a stir in the village as he adjusted to the vast culture shock of different family, country, language, religion and customs, as well as enduring frequent operations.

Amar had long accepted his orphan status but, unbeknown to him, his birth mother had been trying to find her long-lost son. DNA tests were done and confirmed as positive.

The programme followed his journey back home to Iraq and saw him being reunited with his mother and brothers. It had been assumed, in the chaos of war that they had all perished. His mother had instigated attempts to find him and she was overjoyed to be re-united with her long-lost son. We see Amar visiting his father's grave accompanied by his mother.

Jenny Glanville, who Amar visits regularly, explains that it was an overwhelming experience for him. Amar was delighted to be re-connected with his birth family, but having made a long and difficult adjustment to living here, he now feels more at home here than in Iraq. Although he now lives in Hatherleigh, he maintains his close friendships and connection to Winkleigh.

Submitted by Penny Griffiths



gilbertstephens
SOLICITORS

Local legal advice

Call our Crediton office on **01363 77 55 66**
Manor Office, North Street, EX17 2BR

Visit **gilbertstephens.co.uk** for more info

Gilbert Stephens is the trading name of Gilbert Stephens LLP which is authorised and regulated by the Solicitors Regulation Authority (no. 536070).

FREE 20mins consultation

Milestone for Devon Sculpture School



The Sculpture School in North Tawton is now in its 5th year, having become established not only as a leader in the field of realist figurative sculpture, but also as the perfect retreat for those looking for a short creative break in Devon.

The Sculpture School was founded by master sculptor, Andrew Sinclair MRSS and his partner, Diane Coates, in 2010 and laid down its roots a stone's throw from Dartmoor 5 years ago.

The Sculpture School was originally based in Buckinghamshire and after 4 years of steady growth the decision was made to move to Devon. This was not a decision that was taken lightly; with customers travelling from all over the world there are obvious logistical benefits of having a central location. However, the draw to move to Devon was so great that Andrew and Diane felt it was a risk worth taking. **They were sure their visitors would fall in love with the county as they had and that their whole sculpture experience would be the better for it.** They were not wrong. The purpose-built studio and workshop enjoys 360° degrees of glorious Devon beauty and the atmosphere is aptly summarised in a review from one of their recent students;

"The whole experience was inspiring, therapeutic and calming. It forced you to focus on something quite beautiful and imaginative and immersed you into another dimension outside of the rat race and emails."

There are ten 4-day courses throughout the year, ranging from Figurative and Portrait to Animal and Specialist Techniques, all teaching realist sculpture in clay. Associate tutors offer to teach specialist subjects like Moulding & Casting and Bronze Casting throughout the year too.

All manner of people sign up to these courses; men, women, students, retirees, novices and even professional sculptors. The common denominating factor is their desire to improve their skills, invest in themselves and enjoy a short break in Devon.

Recreational courses in sculpture are growing in popularity, but there is **nowhere else in the country that offers the opportunity to learn realist figurative sculpture under the guidance of a world-renowned sculptor. And one who is so ready and willing to share his knowledge and techniques and throw open the doors of his professional workshop to visitors.**

Andrew explains, ***"It is very rare for an art school to have access to such a studio, using contemporary, industry standard working practices. I am passionate about inspiring the next generation of sculptors and the obvious way to do that is to be an open book."***

The Sculpture School is the only place in the UK where you can learn the unique 'Sinclair Method' of Sculpture, designed by master sculptor Andrew himself. This innovative method incorporates DesignCriteria™, anatomy and proportion using Dynamic and Energy Curves™ and The Rapid Sketch Technique™. This ground-breaking system claims to revolutionise the way you approach sculpture, whatever your ability by breathing life and energy into your work.



Taste of Sculpture Days have recently been introduced in the schedule for those wanting to have a go at sculpting and get an overview of The Sculpture School and a taste of Andrew Sinclair's passion for the topic. The next two days will be 18th September and 2nd December; the cost is £65.

Ingrid Oram 01837 82879

<https://thesculptureschool.co.uk>

Marshalls

ELECTRICAL CONTRACTORS LTD

WINKLEIGH & MORETONHAMPSTEAD

CALL US ON 07970705471 or Find us on Facebook

'Working to keep you connected'

<p>○ INDUSTRIAL</p> <ul style="list-style-type: none"> ○ New Builds / Extensions / Refurbishments ○ Security Lighting / Emergency Lighting ○ NICEIC Inspection & Testing ○ Full Design Service ○ Low Energy LED Lighting ○ Freeview TV Aerials 	<p>○ COMMERCIAL</p> <ul style="list-style-type: none"> ○ Extra Sockets to Full Re-wires ○ Phone and Data ○ Portable Appliance Testing ○ Electric Heating ○ Fire Alarms ○ Consumer Unit Upgrades ○ Freesat Installation 	<p>○ DOMESTIC INSTALLATIONS</p>
---	--	--

APPROVED CONTRACTOR

MEMBER

DOMESTIC INSTALLER

www.marshallselectrical.co.uk

Winkleigh YFC

DEVON
Federation



I can't believe another summer is quickly disappearing and with it another Young Farmer's Club year is coming to a close.

Although this is a busy time of year we have managed to take part in and organise several events and trips. **In May, we held our annual big breakfast at Nethercott House** which was very successful. Nethercott is the home of a local charity, Farms for City

Children, who we have been working with closely over the last couple of years. This also meant we have helped out by volunteering in the garden there, before their official garden opening which a few of our members also attended.

We have also been able to go on several farm visits, for which we are very thankful to the farmers for giving up their time for us. These have included **Taw River Dairy in Sampford Courtenay, Garry and Lorraine Dunn, and the North Wyke Research Centre.**

It is always good to be able to see new ideas and ways of running farming businesses.

This summer we also had the pleasure of hosting the Tarka summer rally. We held it at Burrington Village Hall in July

and had a good turnout of members taking part with parents helping and supporting from the side lines. Many thanks to all who helped with food, judged classes, and with other preparations on the day and before. A special thanks must go to David Weeks who worked incredibly hard to organise the event.

Overall we came 4th so well done to all members who took part in the events.





As said before, we are at the close of another YFC year with officers changing over. So with this in mind I have decided to pass the 'Distinctly Winkleigh' baton on to a younger member, who is keen to take over from me and keep you informed of what the Young Farmers Club has to offer.

I would like to take this opportunity to say how grateful I am that you gave us the opportunity to voice the news of the Young Farmers Club. Thank you to all the Distinctly Winkleigh team and Winkleigh Society for your continued support.

Katrina Brook

Sueno Beauty

Changes, Exeter Road, Winkleigh. EX19 8HW

Aesthetic, Massage & Holistic Therapies

- Swedish Massage
- Deep Tissue Massage
- Aromatherapy Massage
- Hot Stone Massage
- Hopi Ear Candles
- Reflexology
- Micropigmentation
- Micro Needling

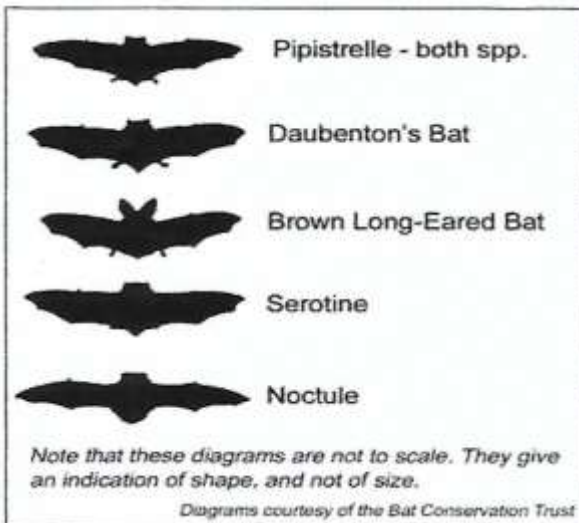
Contact: Gemma Jenkins Tel: 07590233607

Email: suenobeauty@outlook.com

Facebook: [@Suenobeauty](#)

Batty about Winkleigh

When it comes to bats, Winkleigh and Hollocombe have shown some real enthusiasm for learning more about these amazing creatures. It is really difficult to tell one bat from another when we see them flying around the garden at dusk, but now we can benefit from digital technology to give us a clearer insight into the mysteries of the only true flying mammal. **People have participated in the Devon Bat Survey by borrowing a bat monitor (with microphone) to place in their garden or field for three nights.** The unit detects the type of bat by its individual high-frequency calls. There are 18 different species of bats in the UK, the monitor can usually tell them apart, though there is sometimes an overlap.



In total, an impressive 11 kilometre squares in our Parish will have been surveyed this year by October. Adding these reports to those of previous years, we have a clearer picture of which species are criss-crossing our gardens and countryside. We have all been surprised and pleased by the reports sent back to us, listing different bat species flying around.

From the surveys I have seen so far:

At least 12 species have been recorded in the Parish since 2017.

In 2019 the most frequent species by far were the **Common Pipistrelle** (829 flights) and **Soprano Pipistrelle** (371 flights) from 5 properties.

The highest number of flights was in Wood Terrill, Hollocombe.

Two less usual species – the **Brown Long-Eared** and the **Natterer's Bat**



Noctule Bat drawn by Sue Dally
(ref Eileen Soper)

were recorded just outside the village on Townsend Hill.

Other more frequent visitors were **Noctules and Whiskered Bats** (seen in 5 properties; 50+ flights in 2 properties).

There are still some squares available in Hollocombe and outside Winkleigh village, so if you wish to join the fun, **hurry to book a bat detector before end of September**. You can place it in your garden or in a field with the land-owner's permission.

<http://devonbatproject.org/devon-bat-survey/>

Kim J Melhuish - Winkleigh Biodiversity Group (contact via Facebook or Gmail)

Local WI Events

For those interested in the **Ashreigney WI**, they meet on the first Tuesday of the month at their Village Hall starting at 7.15 pm

For those who would prefer an afternoon Meeting – **North Tawton WI** meets on the first Wednesday afternoon starting at 2.00 pm at North Tawton Rugby Club.

North Tawton future events include: 4th Sept "Life and times of a Tudor Lady"

2nd Oct "Hand-made shoes & leather craft"

6th Nov "Cancer Research"

Claire Tricker



THE SHIFTERS

Spirebourne Limited

Liquid Waste Disposal and Drainage Co

EMERGENCY CALL OUTS

Septic Tank/Cess Pool Emptying – Any Size
Grease Traps
Drain Blockage Clearance
Various Commercial Liquid Waste Disposal Servicing
CCTV Drainage Surveys
Pump Repairs & Renewals
Installation of Septic Tanks & Sewage Treatment Works
Mantair Units

FREEPHONE 08000 855 185

spirebourne@hotmail.co.uk
www.spirebourne.co.uk

www.ashridge-court.co.uk
01837 352025
info@ashridge-court.co.uk



The Ashridge Great Barn	Ashridge Court Farm
Nestled in a private valley, the Ashridge Great Barn offers a large flexible space with inbuilt facilities for an event with proper rustic style	Grass-fed Beef Boxes Large or Small Mixed Cuts Requests Accommodated Where Practical
Keep an eye on the website or follow us on social media @ashridgecourtfarm for information on Community Events and Pop-up Restaurants	Free Range Christmas Goose Seasoned Hardwood Logs Coplice Products Pee Sticks and Bean Poles
Get in touch to book for Weddings, Parties and Other Events	Sewn Wood Products



Credit: Watercolour Woodshed

Winkleigh Church Wives Group

I hope all the members of the Group have enjoyed their summer break. By the time you read this report we will have enjoyed the Wives Group Coach Outing to Bude.

September sees the start of a new year for the Wives Group. As usual we will begin with the service in Church on Monday September 9th, followed by the meeting back in the Village Hall.

All our meetings take place on the second Monday of the month at 2.30 pm in the small rear room at the Village Hall. We have a very varied programme to look forward to in the coming months.

In October we will have a visit from a member of the **Dogs Trust**, based at Ilfracombe.

In November we look forward to having a **Hand Bell group** entertaining us, and, as this will be on Monday November 11th, as well as thinking of Christmas we will also be remembering that it is Remembrance Day, a time to think and reflect about those who have gone before us and to whom we owe so much.

On **November 16th we will be holding our Christmas Fair**, and to round off 2019 in December we meet together for a social afternoon with a Quiz, Chatter and some home-made entertainment.

We welcome visitors to any of our meetings, so do come along and join us.

Janet Magor

Dolton Village Hall - Masked Rock Ball

Dolton Village Christmas Party

8 pm on 7th December 2019

It's "Masked Rock Ball" - theme is a simple or elaborate mask, dress as your favourite rock star or just come as your lovely self!

Great music from The Band, Raw Ambition, along with Dolton's legendary DJs

Discounted Early Bird tickets will be on sale from October. Tickets will be full price on the door.

There will be a raffle and a licensed bar

Don't leave it too late to buy tickets or you may not get in!!

Start the festive season with a bang, and a great Christmas Party.

Contact: Kathleen Crane at kathleenjcrane@btinternet.com

A Big Thank You



I would like to say a big thank you to all my friends in Winkleigh for your support and kindness over the last six months. For all the lifts to and from South Molton, Torrington and Barnstaple, whatever the weather or time or day. Through your kindness I was able to visit Dan almost continually including Christmas Day and Boxing Day. Your concern for my welfare was humbling. We held a collection at Dan's Funeral and **£1,300 was raised for the stroke unit at NDDH**. Thank you all.

Angela Fisher

Letter to the Editor - Congratulations



I would like to congratulate the members of the Winkleigh Society committee on the wonderful scarecrow competition and hope that you will repeat it all again next year (for Winkleigh Fair?).

I suspect that my "**Brexit Boris**" lost a lot of votes due to "politics" but he is now semi-retired at Ten Acres Vineyard. Also my sister Jane Bolt was over the moon to win with "**Toy Story 4**".

Special thanks to everyone who made all those lovely scarecrows, I am sure you had as much fun as I did?!!

Rosamund Jarvis

CoHeat Services

Oil-fired Heating and Cooker Specialists



Oil-fired Boiler, Rayburn and Aga Servicing

New heating systems fitted

All plumbing work undertaken no matter how small

Heating systems updated.

Complete bathrooms and kitchens including tiling and all associated works carried out. You supply, I fit, or I supply everything and fit as long as you supply coffee . . .

For a free quote or just friendly advice call John on
01837 83080 or 07768 164696

Winkleigh Morris Approaches Its Thirtieth Year

Who would have thought that in January 1990 when Sylvia Duffy, the landlady of the former Winkleigh Hotel, asked for evening classes on Morris dancing to be arranged at her pub, thirty years later Winkleigh Morris would still be going strong?

In those early days almost all of the participants – men only at first, but very soon afterwards ladies too – lived in or near Winkleigh, with several members based in Hollocombe. Although some current members of Winkleigh Morris do still live within 3 miles of the village (including at least one original member), sadly none are in Winkleigh itself. It is very encouraging, however, that to share in the friendship of Winkleigh Morris and the enjoyment of dancing that many now travel from further afield, from Lustleigh in the South to Landkey in the North, Torrington in the West and Morchard Bishop in the East – and even from Somerset! Nevertheless **it would be good if in our 30th anniversary year if we could once again have a nucleus of Winkleigh residents among our membership.**

We practice every Tuesday evening from October to the end of April (except Christmas/New Year) at the Community Centre from 8 pm to 10 pm. **The first two weeks (1st & 8th October) are special ‘taster’ sessions which are free for potential new members. No previous experience is necessary and all ages (16+ to 65+) are welcome.** Apart from a small contribution on practice evenings to pay for the hall there is no membership fee. If enough minors are interested then it is possible that an earlier session (7 – 8 pm) could be arranged, but accompaniment by a parent or other responsible adult would be appropriate.

During the course of a summer season, Winkleigh Morris dance out at various villages and towns in the area, and usually venture further afield on at least one occasion to a festival, or Morris weekend hosted by another group. In recent years, we have visited Pembrokeshire, Northamptonshire, Derbyshire, Yorkshire and Cumbria and at various times have travelled to the Channel Islands, France, Ireland and Holland.



Winkleigh Morris - Fishguard Folk Festival

In May 2020 we will be hosting a weekend of dance in which we expect to welcome up to two hundred dancers from all over the country.

*For further details, see
www.winkleighmorris.org.uk
Contact Angela on 01837 83219
or Colin on 01363 877216*

WINKLEIGH COMMUNITY GARAGE SALE

Winkleigh village hall committee are organising a whole community garage / table top sale, we will produce a map of all participating houses.

So why not have a good sort out and turn one mans junk into another mans treasure from the comfort of your own home!

Sunday 1st Sept 2019 11 am
location map available
from Londis

Please call for more information, and to
book your place on the map !
Deanne - 0183783431

pitches need to be booked in by 30th August

Suggested £5 donation to winkleigh village hall funds

Winkleigh Market



Locally sourced and produced fruit and
veg, cheese, sausages, cakes and
bakes, honey and preserves, plough and
cut flowers, wine, gifts and much more...



Winkleigh Village Hall
9.30-11am
First Saturday of the
month

FREE iPad Workshops

for over 50s

**Monday 23rd &
Monday 30th
September 2019**

- Get the most from your iPad
- Best tips and practice
- Practical advice on how to use your iPad
- Keep yourself safe online
- Suitable for beginners and those wishing to learn more
- Course lead by qualified experienced IT tutor Tony Gist Training- Torrington

**Attendees may join one or
both sessions**

Times: 9.30am-12.30pm

**Venue: Winkleigh Community
Centre, Castle Street, Winkleigh
EX19 8HU**

To book contact:

Tony Gist 01805 625 / 07749 070 526
tony@tgtraining.co.uk / www.tgtraining.co.uk

For further details contact:

trudi.mackie-brown@drinkwiseagewell.org.uk
kerry.shakesheave@drinkwiseagewell.org.uk

PLEASE NOTE: Course is for Apple iPads only

**BOOKING
IS ESSENTIAL**

**PLEASE BRING
YOUR OWN
EQUIPMENT**

**REFRESHMENTS
PROVIDED**

drink
wise
age
well



**COMMUNITY
FUND**

**COVERING ALL EXCAVATIONS AND GROUNDWORKS
BOTH LARGE AND SMALL PROJECTS AT COMPETITIVE PRICES**



**FULLY INSURED
HEDGE-TRIMMING FLAIL &
CIRCULAR SAW
FIREFOOD PROCESSING**

**CALL MARTIN ON 07817464420
EMAIL: PARISH@BTINTERNET.COM
WWW.MPCONTRACTS.CO.UK
FACEBOOK: MARTIN PARISH
CONTRACTING**

One of Our Scarecrows is Missing!

The village of Winkleigh is reeling from the shock news that ‘Glenda the Gleaner’ has been kidnapped.

Glenda, after all her hard work gleaning David Trenaman’s meadow, had taken up residence on the grass verge where Townsend Hill meets Southernhay. A dedicated walker herself; she positioned herself to slow the traffic down. She certainly gave



people a fright. Fred, David’s faithful collie, was the first to alert us to her disappearance. He found her boot, but despite frantic searching, failed to turn up any other clues. David has asked other farmers to look out for her in their harvested fields. Rumour has it that she sometimes works the fields with a younger woman called Ruth.

We thought she might have traipsed to Toby’s vineyard as she was due to start work there.

Toby, though, has seen neither hide nor hair of her. Or so he says.

Questions as to Glenda’s whereabouts have generally been met with wary unease, verging on the downright shifty. Barry Jenkins from Neighbourhood Watch has been alerted, our PCSO informed. As yet no ransom note has materialised, which is surprising in such a high profile case as this. Winkleigh folk still live in hope of her return. Margaret wants her other boot back and Penny her vintage petticoat!



Laura Norder

(Both sketches are by Sue Dally)

Flute tuition for mature pupils

Explore and enjoy interesting music whether you are a late beginner, rusty returner, or improver of any standard or age.

Feel a sense of achievement when you master a piece of music, or maybe gain the confidence to play in a band.

Whatever your motivation or standard I can provide a wealth of musical experience, and specialist knowledge of the flute.

Jacquie Kenny LTCL AMusLCM. Phone: 01837 851793

Word Search

A	H	Z	O	Y	Q	U	I	D	D	I	T	C	H	O
T	R	O	M	E	D	L	O	V	Z	Q	H	M	P	X
B	E	S	Q	D	P	G	T	R	M	A	W	W	H	D
E	T	Z	Y	S	K	A	Q	Q	G	U	A	W	Y	U
Y	T	S	H	E	L	X	N	R	V	L	I	R	M	M
X	O	O	O	O	P	Y	I	S	C	Z	O	O	Y	B
T	P	R	M	H	G	D	T	N	M	D	K	E	I	L
J	Y	T	X	A	U	W	E	H	N	A	G	R	W	E
W	R	I	H	A	L	V	A	I	E	E	H	X	E	D
U	R	N	N	R	A	F	F	R	D	R	S	E	X	O
I	A	G	Q	R	I	F	O	O	T	F	I	C	M	R
H	H	H	J	L	Y	R	B	Y	L	S	Z	N	M	E
I	L	A	Y	R	E	B	X	G	I	W	D	E	H	Y
F	Y	T	G	M	Y	E	W	J	H	C	J	D	F	Q
U	F	F	U	P	E	L	F	F	U	H	G	H	A	S

DOBBY
DUMBLEDORE
GRYFFINDOR
HAGRID
HARRY POTTER

HEDWIG
HOGWARTS
HUFFLEPUFF
MALFOY
QUIDDITCH

RAVENCLAW
SLYTHERIN
SNAPE
SORTING HAT
VOLDEMORT

Solution on page 62



WINKLEIGH

07970 963450

INSTALLATION &

**NEW AERIALS &
FREESAT**



Digital Aerial
Installations

AERIALS

0800 0930 625

MAINTENANCE

**CARADON HILL
HUNTSHAW CROSS
STOCKLAND HILL**

TV'S - BT VISION - HUMAX PVR - SET TOP BOX

RE-TUNING SERVICE



Number Puzzle

			5		7			
	4		2	6	3			
1		7	4					
3	6						4	5
		2		5		7		
7	9						6	2
					9	4		1
			1	3	4		9	
			6		5			

Solution on page 62

Robinson Plant Ltd

www.robinsonplant.co.uk

A family firm with over 30 years experience

All aspects of earthworks, groundworks and hard landscaping
undertaken including:

Site Excavation and Concreting

Foundations and Driveways

Sewers, Septic Tanks and Treatment Plants

Stone Walling and Paving

Land Drainage and Ponds & Lakes

Riding Arenas and Gallops

Office: 01837 89065 Mobile: 07909 998945

Email: info@robinsonplant.co.uk

Solutions

A	H	Z	O	Y	Q	U	I	D	D	I	T	C	H	O
T	R	O	M	E	D	L	O	V	Z	Q	H	M	P	X
B	E	S	Q	D	P	G	T	R	M	A	W	W	H	D
E	T	Z	Y	S	K	A	Q	Q	G	U	A	W	Y	U
Y	T	S	H	E	L	X	N	R	V	L	I	R	M	M
X	O	O	O	O	P	Y	I	S	C	Z	O	O	Y	B
T	P	R	M	H	G	O	T	N	M	D	K	E	I	L
J	Y	T	X	A	U	W	E	H	N	A	G	R	W	E
W	R	I	H	A	L	V	A	I	E	E	H	X	E	D
U	R	N	N	R	A	F	F	R	D	R	S	E	X	O
I	A	G	Q	R	I	F	O	O	T	F	I	C	M	R
H	H	H	J	L	Y	R	B	Y	L	S	Z	N	M	E
I	L	A	Y	R	E	B	X	G	I	W	D	E	H	Y
F	Y	T	G	M	Y	E	W	J	H	C	J	D	F	Q
U	F	F	U	P	E	L	F	F	U	H	G	H	A	S

8	3	6	5	1	7	9	2	4
5	4	9	2	6	3	1	7	8
1	2	7	4	9	8	6	5	3
3	6	1	9	7	2	8	4	5
4	8	2	3	5	6	7	1	9
7	9	5	8	4	1	3	6	2
6	5	3	7	2	9	4	8	1
2	7	8	1	3	4	5	9	6
9	1	4	6	8	5	2	3	7

TEN ACRES VINEYARD



SHOP OPEN Thurs - Tues (10am-8pm)

TOURS Sat 5pm (all season) & Thurs 4pm (July/Aug)

Booking (01837) 83892 www.tenacresvineyardcamping.co.uk

Heating, Cooking & Living.

- Stoves • Range Cookers & Cookware • Renewables
- Flues & Chimneys • Spares & Accessories • Logs



We have one of the largest selections of stoves, range cookers, renewables, spares, accessories, flues and chimneys in the UK. Our knowledgeable and experienced staff are just a 'phone call away or why not visit our showroom just outside Winkleigh?

OPEN MONDAY TO SATURDAY, 9AM - 5PM.

Telephone 01837 680068

www.rangemoors.co.uk



What's On Diary – 2019

Please send details of your events to articles@distinctlywinkleigh.co.uk

Please also note that regularly occurring events are not usually listed here

September	
1 st starting at 11 am	Community Garage Sale
2 nd starting at 7.30 pm	Winkleigh Singers Open Rehearsal, UMBERLEIGH Christian Fellowship Building (on A377)
4 th from 2 – 4 pm	Forget-Me-Not-Friends - Community Centre
7 th from 12 noon	Broadwoodkelly Village Day & Novelty Dog Show
11 th – 9.30 – 11 am	Forget-Me-Not-Friends Advice Surgery - Community Centre
12 th from 6 pm	Down Farm Tour
12 th at 7.30 pm	Crediton Flower Club Open Demonstration: “At Summers End”, Sandford Parish Hall, EX17 4NA
18 th – from 2 – 4 pm	Forget-Me-Not-Friends - Community Centre
22 nd starting at 11 am	War Horse 10k Race, Iddesleigh EX19 8BG
22 nd starting at 10 am from 2 – 6 pm	Tractor Run, followed by: HarFest by Winkleigh Methodist Church at Higher Punchardon Farm (Fiona's Farm Shop)
23 rd & 30 th 9.30 – 12.30 pm	Free iPad Workshops for Over 50s, Community Centre
October	
1 st & 8 th - 8 pm to 10 pm	Winkleigh Morris Practice Taster Sessions, Community Centre
2 nd from 2 – 4 pm	Forget-Me-Not-Friends - Community Centre
5 th – Eyes Down at 7.00 pm	Bingo (with MEAT prizes), Village Hall
6 th starting at 9.30 am	Harvest Festival, All Saints Church
9 th – 9.30 – 11 am	Forget-Me-Not-Friends Advice Surgery - Community Centre
16 th from 2 – 4 pm	Forget-Me-Not-Friends - Community Centre

<i>November</i>	
2 nd at 4 pm	Commemoration Service to remember loved ones who have died, All Saints Church
6 th from 2 – 4 pm	Forget-Me-Not-Friends - Community Centre
10 th starting at 3 pm	Remembrance Service, All Saints Church
13 th – 9.30 – 11 am	Forget-Me-Not-Friends Advice Surgery - Community Centre
20 th from 2 – 4 pm	Forget-Me-Not-Friends - Community Centre
24 th Time starting at 7 pm	Winkleigh Singers & Artavian Baroque: Charpentier's Mass for Four Choirs at Marwood Community Hall.
<i>December</i>	
4 th from 2 – 4 pm	Forget-Me-Not-Friends - Community Centre
7 th starting at 8 pm	Masked Rock Ball Christmas Party, Dolton Village Hall
11 th – 9.30 – 11 am	Forget-Me-Not-Friends Advice Surgery - Community Centre
14 th – Time - <i>see posters</i>	Kings Arms Aunt Sally Team Pantomime: 'Cinderella' – <i>further details to follow</i>
14 th starting at 7.30 pm	Winkleigh Singers Christmas Concert, Winkleigh Parish Church
15 th starting at 4 pm	Winkleigh Singers Christmas Concert, Chittlehampton Parish Church
18 th from 2 – 4 pm	Forget-Me-Not-Friends - Community Centre

All dates & details are believed to be correct at the time of going to press.

Changes will be notified via the online diary at www.winkleighonline.co.uk

Also please email details of any events to go into the online diary at any time.

And Finally

The Scarecrow Trail proved to be very popular during Winkleigh Fair week with a good number of votes cast; the winning entry is featured on the front cover. Our thanks to Rachel and Greg Goldsworthy for the Scarecrow photos. We hope the event can be repeated next year and will attract even more entries.

Also thanks to Sue Dally and 'Stone' Naylor for submitting other sketches and photos. As you may have seen in the Winkleigh Fair report, a number of members of the current Fair committee are standing down after four years. They are looking for new and enthusiastic individuals to take over from them to ensure that the 750-year old traditions of Winkleigh Fair can continue in the future and not die out.

The variety of articles in this edition shows you how many different activities and events happen in Winkleigh and the surrounding area. Long may they continue!

If you have anything you think will interest our readers that you would like to share please send it to us. In particular we want to hear from the younger members of the community. Our Inbox and letterbox are always open.

The deadline for contributions to the next edition of Distinctly Winkleigh is

NOON on Friday 8th November for both articles and adverts.

Publication / distribution is planned for the weekend of 22nd November.

<p>JOSH NOON TREE SERVICES TREE SURGERY & LOW IMPACT FORESTRY QUALITY SEASONED LOGS & KINDLING FOR SALE</p>  <p>☎ 01363 83908 ☎ 07792 906258</p>	 <p>JAD MOTTRAM PLUMBING & HEATING</p> <p>Gas • LPG • Oil • Solid Fuel</p> <p>All Plumbing & Heating Works Multi Fuel & Wood Burning Stoves Drainage & Septic Tank Installation Residential Park Homes Static Caravans</p> <p>www.plumberinsouthmolton.co.uk jadmottram@hotmail.com</p> <p>01769 560985 / 07933 166664</p> <div></div>
---	--



John Short

Professional Interior & Exterior
Painting and Decorating

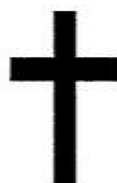
Clotworthy House, Torrington Road,
Winkleigh, Devon, EX19 8HR

Telephone: 01837 83709

W.D & S.J CARNE



*Independent Family Owned
Funeral Directors*



Established over 60 years
Personal Attention Day and Night

Carney Cottage, Winkleigh, Devon, EX19 8HX
Email: wdandsjcarne@gmail.com
Tel: 01837 680199/83387

Pre-paid and Bespoke Funeral Plans Available

DISTINCTLY WINKLEIGH - PUBLICATION INFORMATION

Publication by **The Winkleigh Society** is quarterly at the **end of February, May, August and November**. Copies are distributed free to households and businesses in the Parish. The views expressed in submitted material are not necessarily those of the newsletter team or The Winkleigh Society.

All readers are most welcome to send in Articles (or reports, letters, drawings, etc.).

Articles may be subject to editing, primarily for space or layout reasons.

Articles can be emailed to *articles@distinctlywinkleigh.co.uk*, or sent to the Editor.

Advertisements from businesses in the local area should be emailed to *adverts@distinctlywinkleigh.co.uk*, or sent to the Editor

The deadline for material is NOON on the second Friday of each publication month.

ADVERTISING RATES

	Quarter Page	Half Page	Full Page
1 edition	£12.50	£25.00	£50.00
2 editions	£25.00	£50.00	£100.00
3 editions	£37.50	£75.00	£150.00
4 editions	£50.00	£100.00	£200.00

Contributions to the newsletter can be accepted in written or typed form, memory stick, or email attachments in WORD, PDF, PNG or JPEG file formats.

EDITOR

Godfrey Rhodes, 32 Westcots Drive, Winkleigh EX19 8JP - Tel: 01837 682982

WINKLEIGH SOCIETY COMMITTEE MEMBERS

<i>Chair</i>	Penny Griffiths	01837 83407
<i>Vice Chair</i>	Margaret Miller	01837 83398
<i>Hon. Treasurer</i>	Alan Mulcahy	01837 680145
<i>Hon. Secretary</i>	Philip Griffiths	01837 83407
<i>Committee Members:</i>	Alan Jacobs	Barbara Jenkins
	Royston Naylor	Godfrey Rhodes
	Rachel Goldsworthy	Sue Dally

Winkleigh Society membership is open to all Winkleigh parish residents, who are welcome to attend and vote at Society meetings. Further information about the Society and what is going on in Winkleigh can be accessed online at: <http://www.winkleighonline.com>

HEDGEROW PRINT, CREDITON, DEVON EX17 1ES: 01363 777595