

DISTINCTLY WINKLEIGH



Working for Winkleigh

WINKLEIGH



ENVIRONMENT GROUP

Edition 72

Winter 2019

Cover sponsored by

Ian Shacklock, MTF Training, Moortown Farm, Winkleigh. 01837 83325

The Winkleigh Society Quarterly Journal

Clotworthy House



Let us help you take the stress out of family or friends coming to visit. Clotworthy, a period Georgian house close to the village centre, offers 4* Gold Award accommodation.

All rooms are large and with good views, and all have en suite facilities with free standing baths or showers.

Give us a ring for availability or send us an e-mail.

Clotworthy House Bed & Breakfast

Torrington Road, Winkleigh, Devon EX19 8HR

Telephone Susan or John Short: 01837 83709

Email: enquiries@clotworthyhouse.co.uk

Web: www.clotworthyhouse.co.uk



**Local Family Run Residential
Sales & Lettings Agent**

**Call us for a FREE
no-obligation Valuation of your Property.**

01837 83393

info@howesestates.co.uk www.howesestates.co.uk

Sell your property from 0% and no upfront fees*

*terms and conditions apply



The Winkleigh Society - New Information Directory

The Winkleigh Society's **Information Directory**, which was last delivered to every residence in Winkleigh Parish in December 2013, is being updated with as much current information as we have been able to gather, in order to publish and distribute a new version in early 2020. Care has been taken to ensure that the information is current, but **it is of prime importance that anyone with an entry in the Directory should check to see that it is correct.**

The latest version is online at <http://www.winkleighonline.com/PDF/InfDir.pdf>

For those who do not have access to the internet, proof copies will be available for inspection at the Community Centre, the Village Hall and the Sports Centre.

If you wish to change, delete or add something please send your changes to website@distinctlywinkleigh.co.uk or, if you do not have internet access, put your changes in the collection boxes which will be found in each of the three Winkleigh Halls. Updates can also be telephoned to 01837 680145 where, even if there is no one to take your call, there is an answerphone on which you can leave your message or a call-back phone number.

**JOHN COCKRAM
CHRISTMAS TREES**

 Norway Spruce
Nordman Fir
Fraser Fir

FRESHLY CUT

PICK YOUR OWN TREE

AT CHULMLEIGH HILL PLANTATION
On B3096 between Chulmleigh & Chawleigh
Sat Nav: EX18 7ES
Open Fridays, Saturdays and Sundays
From Friday 29th November
to Sunday 15th December
& Sat. 21st December
-9.30am to 3.30pm -
-Peninnis, CHAWLEIGH
Tel: 01769 580129 or 07724 079733
johncockram@hotmail.co.uk

Member of
The British Christmas Tree Growers Association

It is intended that the final version be sent to the printer in early January. In order to avoid accusations that it is "out of date as soon as it is published", **all changes should be sent in by 31st December, after which date no further changes will be accepted.**

Please note that the online version will continue to be updated with all notified changes, following publication, to ensure that the online version remains current.

Winkleigh Society Chair's Report

The Winkleigh Society objectives are:

- 1. To promote high standards of planning and architecture in or affecting Winkleigh.*
- 2. To raise awareness of the importance of local landscape, history, architecture, traditions and culture of Winkleigh.*
- 3. To secure the preservation, protection, development and improvement of features of historic or public interest in Winkleigh.*
- 4. To enable Winkleigh people and businesses to benefit from initiatives and activities that can enrich the lives of people in Winkleigh.*

In order to be true to our objectives, we as a society have involved ourselves with the Neighbourhood Plan and do occasionally put in comments on planning applications using the principles of the 'Village Design Statement'.

The Pop-up Museum, talks by Bill Horner, Devon's Chief Archaeologist, buying, framing and displaying James Ravilious prints, making financial contributions to the North Devon Archive, promoting and financing Childrens' Story and Art competitions and organising the Scarecrow Trail for Winkleigh Fair are all about flagging up local History, traditions and culture.

The Hedge Survey, working with the Green Group and Muddy Shoes and featuring Winkleigh Parish Council's declaration of a Climate Emergency in this edition highlight the intrinsic importance of respecting and understanding our wildlife and landscape. **Thank you to Eloise for the cover illustration and Betsy for sharing her thoughts on Greta Thunberg (page 45).**

Organising the annual Memorial Service on the Airfield is also important to the Winkleigh Society as it commemorates all the airmen, British, Canadian, Norwegians, Polish and American, who served there during and after WW2. This takes place at the Airfield Memorial, where there is an interpretation board. As the airfield develops and changes it is important to remember and flag-up its historic significance. As we did last year, we have written to all the businesses on the airfield inviting them to attend. **Thank you to Hazel Towell for creating two beautiful eco-friendly wreaths with wax poppies laid at the two War Memorials by The Winkleigh Society over the Remembrance weekend.**

This brings us to objective no 4: promoting and involving local business.

Alan Mulcahy, Philip Griffiths and Margaret Miller have been beavering away for weeks updating Winkleigh's Business Directory which Alan has written about on page 3. Rachel Goldsworthy, when she joined our committee, told us that she has

found the 'WWW' directory indispensable and suggested we update it. This has become a major task as Winkleigh's local economy changes, modernises, develops and expands.

Kingsley Plastics now stands blue and proud on the airfield, having vacated their previous site on Hatherleigh Road. As well as established local businesses there are dozens of new enterprises from individuals to national/international enterprises: a car-wash, stable-making, wood & uPVC recycling, yurt hire, high-speed broadband installers, one of the largest wood recyclers in the UK, millinery, farm machinery sales, organic 'no dig' horticulture and many more.

When we have finished compiling the directory we intend to launch it at a **business forum** sometime in the New Year. This will be our flagship event.

Thank you to Gemma from Winkleigh Clothing Company for suggesting that with so many businesses popping up, it would be a good idea to have a forum.

Thank you also to all the business ventures and community groups who regularly advertise in DW. It is our life blood, as we run it completely independently.

Do you want to know more about The Winkleigh Society and its offspring Distinctly Winkleigh? If so, **please phone or e-mail Penny Griffiths (83407)** or contact any of our ten strong committee (details on DW back cover). The Winkleigh Society strives to fulfil its objectives and the main way of keeping the local community informed, involved and entertained is with our quarterly journal Distinctly Winkleigh.

Penny Griffiths

Sam's Cider has your Christmas covered!

We have an onsite gift shop with many items to tempt you, including our bespoke hampers, the perfect gift for any cider lover in your life.

We also have the full range of Sam's Ciders to try before you buy, including our **NEW Cloudy Crush Cider**. As well as our **Toasty Tipple Mulled Cider** available from October to January to warm up any chilly day, it's the perfect winters drink.

Why not pay us a visit?





Winkleigh Fair Christmas Market

Saturday 7th December at Winkleigh Square
4.30pm -8.00pm

**Come by and support our local vendors and stock
up on all things Christmas.**

**Come and see Santa and his huskies
Christmas Lights switch on
Tombola and Raffle
School Choir
Market and Craft stalls
Hot Food**

Robinson Plant Ltd

www.robinsonplant.co.uk

A family firm with over 30 years experience

**All aspects of earthworks, groundworks and hard landscaping
undertaken including:**

Site Excavation and Concreting

Foundations and Driveways

Sewers, Septic Tanks and Treatment Plants

Stone Walling and Paving

Land Drainage and Ponds & Lakes

Brick Work and Block Work

Office: 01837 89065 Mobile: 07909 998945

Email: info@robinsonplant.co.uk

What's going on at Winkleigh Methodist Church?

Our special **HarFest celebration** in the barn and field at Higher Punchardon/Fiona's Farm Shop went ahead in spite of the poor weather forecast – and it didn't rain until the event was over! Thirteen tractors took part in the tractor run with others on display in the field. About thirty drivers and passengers enjoyed a home-cooked meal in the barn which was followed by a well-attended harvest celebration service. There was lots of fun and laughter with the various activities and games and the opportunity for young and the 'young at heart' to hold snakes and insects and learn lots about them. All that plus delicious cream teas and a tasty barbeque! Thank you to everyone who came along to support this event and for all the volunteers who made it possible. The amazing profit of **£680.90** will be split between CLIC Sargent and the Freedom Centre, Barnstaple.



Follow the Star! Nativity tractor parade through the village



finishing at the Chapel with food and carols

Sunday, 22 December at 4.30 pm

**Funds raised will be donated to CLIC Sargent
& The Freedom Centre, Barnstaple**

'The Earth is the Lord's and everything in it' (Psalm 24:1)

As Christians, we greatly value the natural world and are very concerned for those affected by current and future climate change. Winkleigh's Methodist Church building, which was built in 1885, is a poorly insulated, difficult-to-heat stone building with high ceilings. We are conscious of the carbon footprint of our church community as a whole, but especially the electricity used to heat and light our church building. We are careful to limit our consumption, while still continuing our weekly activities. In 2012 we changed to Good Energy, which buys all their electricity from renewable sources.



The average UK energy supplier bought only 32% from renewable sources in 2018-19. The electricity used in our church isn't any different from that bought from British Gas or EDF. There aren't separate wires with renewable energy flowing down them! But the profits made by Good Energy are reinvested into new renewable generation. We are hoping to install more effective heating in the near future. We serve meals from local produce at our weekly Oasis Cafe to minimise 'food miles'. In other ways,

we try to minimise our consumption by recycling our waste, avoiding single-use plastics, arranging car-sharing to events and meeting in homes to save heating the church. It is not always easy and we are constantly looking at ways to reduce our impact on the planet and its people.

Sunday worship begins at 11 am with coffee served from 10.40 am. Sunday School and SOW for teenagers runs at the same time. Every first Sunday in the month we meet at 5.30 pm (café church) or 6.30 pm (Recharge, youth focus) instead of 11 am and enjoy a bring-and-share tea. Please see our notice board for more detail.

SPACE Youth Club runs on the second and fourth Friday of every month: Years 5 & 6 from 7 to 8.15 pm and Year 7 upwards from 8.15 to 10 pm - £1 entry fee and a tuck shop available for anyone wanting to buy a snack. If you are on Facebook, you will also be able to keep up to date with what's happening at our Youth Club on the **SPACE** page.



Oasis Café at Winkleigh Methodist Church every Wednesday: Home-cooked two-course lunch served at 12.30 pm (coffee, lighter lunches or cakes also available). All ages welcome – please pop in.

For more detail about church life or prayer requests please contact any of the people below and we will do our best to help you.

Alan and Fiona Marshall 01837 83809 / Pam Down 01837 83674

**Everyone is welcome to join us on Christmas Day
for a short celebration service at 10.30 am.**

We would like to take the opportunity to wish you all a



STOP PRESS

The **Friends of Winkleigh School Committee** want to thank everyone who supported the Fireworks Event on Friday 1st November; even the rain paused for the fireworks!

Special thanks go to: Dave at DMR Pyro for the fireworks, Sam's Cider for the bar, the Mad Butcher for the sausages & burgers, Jamie Stuart for the use of the BBQs, Warburtons for donating the rolls, Tim Rhodes for the disco, Roger Hill for creating the bonfire and everyone who braved the bad weather. **We raised £943.64 for Winkleigh Primary to buy vital items and provide money towards class trips.**

Winkleigh Fair Committee

As you probably know, the Winkleigh Fair Committee stood down in August and a new committee has now been formed. We hope we can entertain you and put on a Fair Xmas and Summer, along with other fund-raising events throughout the year.

I would like to thank the outgoing committee for all their hard work and for the fabulous events they arranged.

The New Committee is: Chair – Deanne Whittaker, Vice-Chair - Julie Robinson, Treasurer – Tony Kennard, Secretary – Faye Tomkins, Richard Turner, Liz Rooke, Joanna Waite, Sarah Goody, and Saran Evans.

The Youth Committee is: Lewis Moor, Jo Whittick, and George Bridgeman.

Deanne Whittaker

Hollocombe Community Fibre Project Tackling the Digital Divide

A small group has begun soliciting interest in setting up a community group to bring Ultrafast Broadband to the Hollocombe Community. Last month, the Government put £5 billion on the table to help deliver ultrafast broadband to the UK's most isolated homes and businesses.

Are you suffering continuous buffering, dropped connections, long periods of no mobile reception, no broadband or no landline, as I have this year? it is worrying, frustrating and exasperating if you need to contact the emergency services, call your local GP, order in your groceries, or talk to friends and family at home or abroad. **I believe we can work together to change this with formidable community power!**

I work for a company, along with many others, that is surveying, constructing and delivering privately-funded fibre to community projects. Recently I have been tasked with surveying small hamlets including Hollocombe, Higher Hollocombe and the surrounding area from Berners Cross to Dolton Cross to Bridge Reeve area.

If you would like to know more about getting fibre to your premises, or feel you can contribute please contact Glenn Dalgarno at the email below. We really need help with setting up a legal entity to approach Openreach, fund-raising and to make all your friends, family and neighbours aware of the Hollocombe Fibre Community Project.

To help us approach Openreach, we need your email address, primarily to show Openreach the amount of positive interest and also if you wish to be notified of the projects development.

Thank you - Info@hollocombefc.uk



**NATIONAL
TRADING
STANDARDS**

Scams Team

Free call blockers

The National Trading Standards Scams Team are offering **FREE call blocking** units for people who receive a high level of scam or nuisance phone calls.

Do you or someone you know would benefit from a call blocker?

If you answered yes, then apply for a **FREE** call blocker today!

www.FriendsAgainstScams.org.uk/callblocker

Why install a call blocker?

Research from the previous call blocker project shows that **99%** of scam and nuisance calls were blocked.

People have reported many benefits from having a call blocker, such as:

- *Significantly reducing the risk of financial harm.*
- *Reducing the risk of trips, falls and distraction accidents due to answering the phone unnecessarily.*
- *Helping those who live alone feel safer and more in control and giving peace of mind to their family and friends.*

If you would like to receive a social media pack or have any queries regarding the project please contact: Call.BlockerProject@surreycc.gov.uk

For updates on the project follow us on social media!



@FriendsAgainst



@AgainstScams
@NTSScamsTeam

We would also encourage you to compete the Friends Against Scams online learning session, which provides information about scams and those who fall victim to them.

www.FriendsAgainstScams.org.uk to become #ScamAware today!

STOP PRESS: Dates of Ashreigney and North Tawton Women's Institutes Events can be found in the Online Diary at www.winkleighonline.com. Their WI Members wish you a Merry Christmas & a Very Happy New Year.

Taw Valley Quilters

Our monthly meetings at the Community Centre for patchwork and quilting continue to attract a mixture of beginners and experienced needle workers. We have accomplished tutors and in-house teachers to hold workshops regularly for projects, techniques etc., which help us all to learn, enhance our knowledge and enjoy this relaxing and wonderful hobby.

A special mention must be made of one of our members, Val Judge, who won the Audrey Dean award earlier this year for her first large project, a table runner, at the South West Quilters AGM which made her, and our members very proud.

We look forward to 2020 for more projects to be started, or finished, at our companionable meetings, with fabric and needles, with pleasure.

Margaret Ferguson

Winkleigh Short Mat Bowling Club

Our 2019/20 season is now in full swing and we are running 16 teams in five different leagues, both afternoons and evenings. So all our members are able to play competitively if they want to. On Monday and Friday afternoon we have our "roll up" sessions which are social sessions for all.

The end of September saw our **Pairs Tournament**, now well-established on the bowling calendars. We had 20 teams from all over the County and beyond and had to turn almost as many away as we were over-subscribed. They obviously love coming to Winkleigh! A good day was had by all and the winners were a team from Moretonhampstead.

By the time you read this we will have had our first Club Competition - the Royal British Legion Cup, always contested in early November at Remembrance time. The winner will be the Club's Singles Champion, a much coveted title.

If you would like to find out more about Short Mat Bowling please make contact. We'd love to hear from you.

Jan Ovenden - 0183783853

Winkleigh Youth Judo Club

Winkleigh Youth Judo Club has been running in Winkleigh for over 20 years and currently **we meet in the Community Centre between 6 pm and 7 pm on most Thursday evenings** during term time. We have some spaces for new members and are holding 2 free 'taster sessions' for anyone who would like to try on 13th and 20th February 2020. It is suitable for girls and boys and all ages.

Our contact details are Michel Savy - 2nd Dan - on 01769 580268, or text 07831 388323 and we would be more than happy to answer any questions you may have. We look forward to seeing you.

Angela and Michel Savy



A Will Prepared by a Retired Former Solicitor

After graduating in Business Studies (1974) I qualified as a Solicitor in 1979, and for many years owned my own firm of solicitors before selling and choosing a simpler life.

I am no longer a solicitor. I can now offer my expertise but without the high overheads, especially as my part-time work is carried out from home.

Consequently I am able to prepare you a new Will for £100 with no V.A.T. charged.

Ivan Sanders, 8 Elms Meadow, Winkleigh EX19 8JU.
T: 01837-682888 E: sanderslongdrive@yahoo.com

Winkleigh Young Farmers Club



Another harvest has come and gone, and with it comes a new YFC year. Our AGM saw an election of new officers: Zack Penter is now our chairman, Danielle Bradford is our secretary, and Ashleigh Chambers is our treasurer. Along with this change of committee has come a change in writer for these articles. Katrina kindly asked me to take over her role of informing the village of everything we get up to, and all our upcoming events. I hope that I can live up to her writing skills,

and can continue to update everyone on our club events.

Our last few months have been spent putting together our carnival float, with many hours spent drawing and painting.

Our theme this year is 95 years of Walt Disney. So far, we have taken part in

Okehampton carnival and South Zeal carnival, both of which our members have thoroughly enjoyed showing off their work at. Unfortunately, Dolton carnival had to be cancelled this year, but we still hope to win big at Hatherleigh and Holsworthy carnivals.

This year we decided to be a bit tamer and only have a club meal instead of a dinner and dance, however we still had a fairly large turn-out of members new and old! A big thank you should go to the Lymington Arms who hosted us for the night and provided us with great food. The evening was followed by a County hockey match the next morning, which saw many of our team playing with killer hangovers! This did not deter them in any form of the imagination, however, and they gave each game their best shot. Unfortunately, we only won one match out of all those that we played.

Recently, we held our new members' meeting, which saw a few new faces.



Need Help In The Garden?

RHS Qualified, Experienced Gardener

All Aspects of Garden Maintenance

Planting Ideas

Year Round Reliable Service

Call Maxine on 01837 680039 or 07815 309023



The evening was filled with team-building games, allowing everyone to get to know one another. **Another change that has allowed us to meet more new faces is the introduction of our 'Mini YFC'. This club will be run on a monthly basis for 10 to 14-year olds.** Don't worry if you missed out on either of these evenings but would like to come and see what we're all about, you can feel free to pop along to any of our meetings; just message Danielle on 07544 940197 to find out when the next meetings are.



By the time that you read this article we will have had our **Cider and Pasty Quiz**. We are hoping for another fully packed hall of keen quizzers, but I shall comment how well the evening went in the next edition. By then we hope to have some dates of events that I can share with you.

To see all the events that we take part in, please see our Facebook page 'Winkleigh YFC'.

Ashleigh Chambers

Marshalls

ELECTRICAL CONTRACTORS LTD

WINKLEIGH & MORETONHAMPSTEAD

CALL US ON 07970705471 or Find us on Facebook

'Working to keep you connected'

<p>○ INDUSTRIAL</p> <ul style="list-style-type: none"> ○ New Builds / Extensions / Refurbishments ○ Security Lighting / Emergency Lighting ○ NICEIC Inspection & Testing ○ Full Design Service ○ Low Energy LED Lighting ○ Freeview TV Aerials 	<p>○ COMMERCIAL</p>	<p>○ DOMESTIC INSTALLATIONS</p> <ul style="list-style-type: none"> ○ Extra Sockets to Full Re-wires ○ Phone and Data ○ Portable Appliance Testing ○ Electric Heating ○ Fire Alarms ○ Consumer Unit Upgrades ○ Freesat Installation
--	---------------------	---

APPROVED CONTRACTOR

MEMBER

DOMESTIC INSTALLER

www.marshallselectrical.co.uk

WINKLEIGH MONTHLY MARKET

NEW MANAGEMENT!

NEW TIMES!



After managing Winkleigh Market in such a brilliant way, Suzy Garland is standing down at the end of the year to be replaced, with effect from the first market of the year on Saturday February 1st 2020, by the Winkleigh Village Hall Committee.

The hours of the market are also changing. From the same date the market will be open on the first Saturday of each month between 10am and 12 midday

All existing stallholders are invited to book their pitches with Andrew Ware.

We are especially *looking for new marketeers* to come and sell their wares - Pitch fees just £5.00 a table

***Also fundraising opportunities* each month - book to sell tea, coffee and cakes from the kitchen.**

Contact: Andrew Ware 01837 83526 sueandware@hotmail.com

2020 market dates: 1st February; 7th March; 4th April; 2nd May; 6th June; 4th July; 1st August; 5th September; 3rd October; 7th November; 5th December

BOOK 10 STALLS FROM FEBRUARY TO NOVEMBER AND GET DECEMBER FREE!

Our Devon County Councillor Writes



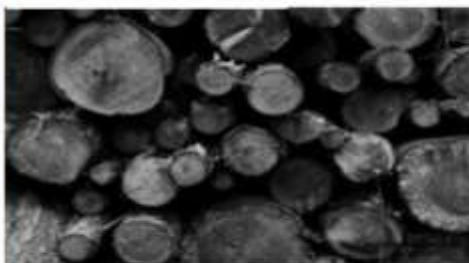
It has been another busy autumn representing Winkleigh and Torrington Rural at County Hall. We live in 'interesting times' at the moment but regardless of what happens at Westminster the work of the County Council goes on.

Starting on a 'favourite' subject of ours – potholes – I hope I am not tempting fate by reporting that the number of recorded potholes is down from this time last year and well below the monthly average for Autumn. I would like to think this is in part due to the substantial amount of resurfacing and repair work that has been taking place across the County, but particularly in Torrington Rural, with resurfacing and patching works taking place in the last two years on the A3124, A386 and B3217, as well as numerous country roads in our villages. In this Parish I have worked with Highways Officers to make a concerted effort on the roads in and around Hollocombe and I am hoping over the next two years we can focus on the roads within Winkleigh itself.

Nevertheless, a harsh winter can cause a huge amount of damage to the road network. As the nights draw in DCC Highways have made their final preparations for winter, having taken delivery of 8,500 tonnes of salt at the beginning of October to ensure that the salt barns are fully stocked at 23,500 tonnes for the winter. The gritters and snow-blowers have also been serviced and all are ready for action.

The winter does of course also bring pressures on our Health and Adult Social Care Services, and officers from DCC will be working closely with the NHS to ensure our vulnerable residents and those in need of services will be protected. Work will be taking place to allocate the Winter Pressures grant money, which for Devon comes to £3.6 million, and will be distributed throughout the local Devon districts to fund specific projects in each area.

Local Logs



Dry seasoned hardwood
All stored under cover & delivered in
Chulmleigh & surrounding area.

Truck Load	£80
Double Load	£160
Trailer Load	£270
Net of Logs	£4
Net of Kindling	£4.50

Martin 07817 464420 parish@btinternet.com
www.mpccontracts.co.uk

Prior to the General Election being announced it had been confirmed that Devon County Council would be receiving additional funding for Social Care. I hope that regardless of the outcome at Westminster this funding will continue and, depending on the formula used to distribute it, Devon County Council can expect around an additional £15 million in funding, with the possibility of a further £7 million potentially raised through a Social Care Precept.

As well as looking after vulnerable adults, Devon County Council also cares for vulnerable children as well. Devon now has 771 children in care and, while the pressures for looking after these children remain high, I was delighted to hear that the County Council has recently recruited a record number of new Foster Carers. 50 new Foster Families have been recruited following the introduction of a new scheme of allowances at the start of the year. Our Foster Carers do an amazing job in looking after some of our most vulnerable children and I am glad that the Fostering system in Devon is taking in more carers.

As we head into December, I would like to wish all Distinctly Winkleigh readers a very Happy and peaceful Christmas. I look forward to the challenges that 2020 will bring us and, as ever, if there is any County Council matter you need any help with, please do not hesitate to contact me.

Andrew Saywell -07886 446560 - andrew.saywell@devon.gov.uk



Winkleigh

CLOTHING CO.

Print & Embroidery Services

BUSINESS BRANDED CLOTHING

WORK & SAFETY WEAR

SPORTS TEAM KIT

SCOUTS & GUIDES UNIFORM

SCHOOL UNIFORM

GIFTS & PARTY ITEMS

*Professional, affordable, good quality personalised workwear
with NO minimum order*

Winkleigh Clothing Co. (Bissetts Garage), Exeter Road, Winkleigh, EX19 8HW

01837 682827

www.winkleighclothing.co.uk **info@winkleighclothing.co.uk**

All Saints News

Once the clocks have changed it always feels like winter is truly here, the days are darker, shorter and colder. Animals hibernate, and birds migrate and honestly, I can see why. I'm sure we would all love to curl up in bed all day or get away to a warmer climate. On gloomy days it feels like you never truly experience daytime and there is nothing worse than coming home to a dark, chilly house. It's always lovely to turn the lights on and the light the fire, suddenly the darkness and cold vanishes and life seems that bit better. As a church we are beginning the season of Advent, a more sombre time in the church calendar reflected in the purple vestments and hangings, no flowers and the omission of certain parts of the liturgy. BUT Advent is not about doom and gloom, rather it is about preparation and anticipation. As part of that preparation each week we light another candle on our Advent wreath, reminding us of the light which is coming into the world - Jesus Christ. The light increases and the darkness is dispelled, until on Christmas morning we light the final white candle on the wreath, the candle which represents Jesus. The light which comes into the world, to dispel all darkness for ever.

At times it feels like the world is just full of darkness and that the light is hidden, even more so in current times. BUT it takes only a single candle flame to lighten a dark room, many candles can dispel the darkness completely. That light for us as



Business Units to let on the Old D & S Supplies Site.

We are looking to split the building into individual units

Various sizes to suit your needs, Planning uses are for

Industrial, Storage, Retail, Food sales and Cafeteria

The site is Secure and offers both 3-phase and 240 v electric supply.

There is also plenty of parking on site

Interested parties please email in confidence shirley Leahy828@yahoo.com

Christians is Jesus Christ, the light which came into the world as a tiny baby born to a young woman, seen by the raggedy bunch of shepherds and heralded by angels. He is the light which dispels the darkness of the world. That light however is not just seen in the life, death and resurrection of Jesus but in the lives of each and every one of us. We can be the light in the darkness of lives of others, we can be the single candle flame which dispels the darkness even just a little.

We can be the light in the darkness, through our words and actions. This light can be a smile, a cheery hello to someone who lives alone, a kind word or a helping hand to someone struggling with their shopping. A donation to a local charity or a tin of food or a treat to the foodbank. Forgo the chocolate Advent calendar and instead place an item a day in a box for the foodbank. All easy simple things which bring light to others and there are so many more. This Advent and Christmas commit yourself to bringing light to the lives of others, let's make this village a place where light shines in each and every one of us and where the darkness of the world is dispelled through sharing that light with others.

We have lots going on over Christmas and would be delighted to see you in church or carol singing in the Kings Arms! Our services will be on our Facebook page, on posters and flyers in church. Come and join us to celebrate the birth of Jesus the light of the world.

The Rev'd Helen Blaine

01837 83710 - revhelenking@outlook.com

Find us on Facebook 'Winkleigh Mission Community'



CHULMLEIGH COLLEGE

Every day is an Open Day

Contact us to arrange a prospective pupils' tour

Why choose Chulmleigh?

2019 GCSE Results: Best in the region for the 5th year. First or second in Devon (non-selective schools) across the key measures of school performance.

School Life: Pupils benefit from excellent extra-curricular opportunities in outdoor education, music, drama, sport and cadet corps.

We welcome you to visit us to see how we can help YOUR child achieve 'Nothing But Their Best'



www.chulmleigh.devon.sch.uk 01769 580215  @ChulmleighAT

admin@chulmleigh.devon.sch.uk  @ChulmleighCollege

Winkleigh Fair

Christmas Window Competition

Category 1: Window

Category 2: Outside area

Category 3: Street / Cul-de-sac

Category 4: Commercial

Prizes to be won!



To enter: please write your name, address and categories you wish to enter on a piece of paper and place in an envelope marked 'Christmas Windows'. Place your entry in the box in Londs by the 21st December.

MTF CONTRACTING

A local experienced service for all your needs



- Agricultural Fencing
 - Garden Fencing
 - Flail Topping
 - Tree Pruning / Tree surgery
 - Wood chipping
 - Ground works / Landscaping
 - Fully Insured
- Free no obligation quotes



Call George
Tel: 01837 83325 or M: 0777 207 8028
Moortown Farm, Winkleigh, EX19 8HA
www.mtfcontracting.co.uk

Thank you Katrina

On behalf of The Winkleigh Society Committee and all readers of Distinctly Winkleigh I am writing to say a very big thank you to Katrina Brooks for all her very interesting and informative articles about Winkleigh Young Farmers Club, which she has sent in for every edition of Distinctly Winkleigh since 2016. Katrina is also passing over the baton of writing in Distinctly Winkleigh to **Ashleigh Chambers**. Her first article is on page 13.

Katrina has been a member of Winkleigh Young Farmers for the past ten years and during some of that time she has held the positions of Chairman and Secretary. Any of you who were present at The Winkleigh Society AGM this past year would have heard Katrina give us a very compassionate talk about Winkleigh Young Farmers. She told us about the different activities they get involved in but most importantly about the money they have raised both during the past year and also in previous years for many, many charities. Well done and congratulations to them all.

After ten years as a member of the Winkleigh Young Farmers Katrina has now become a Member of the Advisory Committee. Her experience and enthusiasm will be greatly appreciated in this role.

Thank you again Katrina.

Margaret Miller. Vice-Chairman, Winkleigh Society

Jenny Rock

Rock Solid Book-keeping Solutions
Creating order from Chaos!

Collacott Lodge,
Winkleigh,
Devon EX19 8LE

Mobile: 07743 683 756

Email: rocksolidbookkeeping18@gmail.com

Book-keeping, Bank reconciliations, Creditor & Debtor Reports.
VAT Returns, Accounts to Trial Balance, Liaise with Accountants.

Temporary, 'One-Off' and Permanent Contracts undertaken.

Friendly, helpful advice for small businesses.

Accounting experience in:

Farming, Manufacturing, Pub, Convenience Store and Retirement Homes

CIMA Advanced Diploma in Management Accounting.

Association of Accounting Technicians NVQ IV.

Neighbourhood Plan News

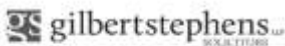
A big thank you to everyone who sent in their views about the Neighbourhood Plan or who wrote comments at the exhibition and public meeting.

The Neighbourhood Plan Group has gone through all the comments, including those from other agencies such as Torridge District Council and the County Council. Overall there was strong support for the plan, but also a degree of frustration that the plan is limited by legislation in how it can deal with things like traffic management. Neither can the Neighbourhood Plan limit the amount of development in Winkleigh – it has to reflect what is in the Local Plan, or propose MORE, not less development.

While the plan cannot meet everyone's concerns about development levels, it does have strong policies that will influence the location, type and design of development in the future, provide more environmental protection where development is proposed and make sure that important Parish assets are protected.

So what happens now? The Parish Council has reviewed the changes that are proposed to meet the concerns of those who sent in comments and it has approved the draft for submission to Torridge. Torridge will then be responsible for arranging the next steps in the plan's journey towards approval – further statutory consultation and a Public Examination by a Planning Inspector. The Parish Council aim to submit the plan to Torridge later this month. A Public Examination will probably take place early in 2020.

If the Public Examination finds the Neighbourhood Plan "sound" then there will be a Parish referendum to decide whether to endorse it. If the answer is "yes" then the plan will formally be "made" by Torridge and it will have statutory status alongside the Local Plan and have to be taken into account in planning decisions. The plan will also be used by the Parish Council when it responds to planning applications, making sure their responses are consistent and reflect the local policies drawn up over the last three years.



**When you need
advice we have
the solution**

**Call our Crediton office
01363 77 55 66**

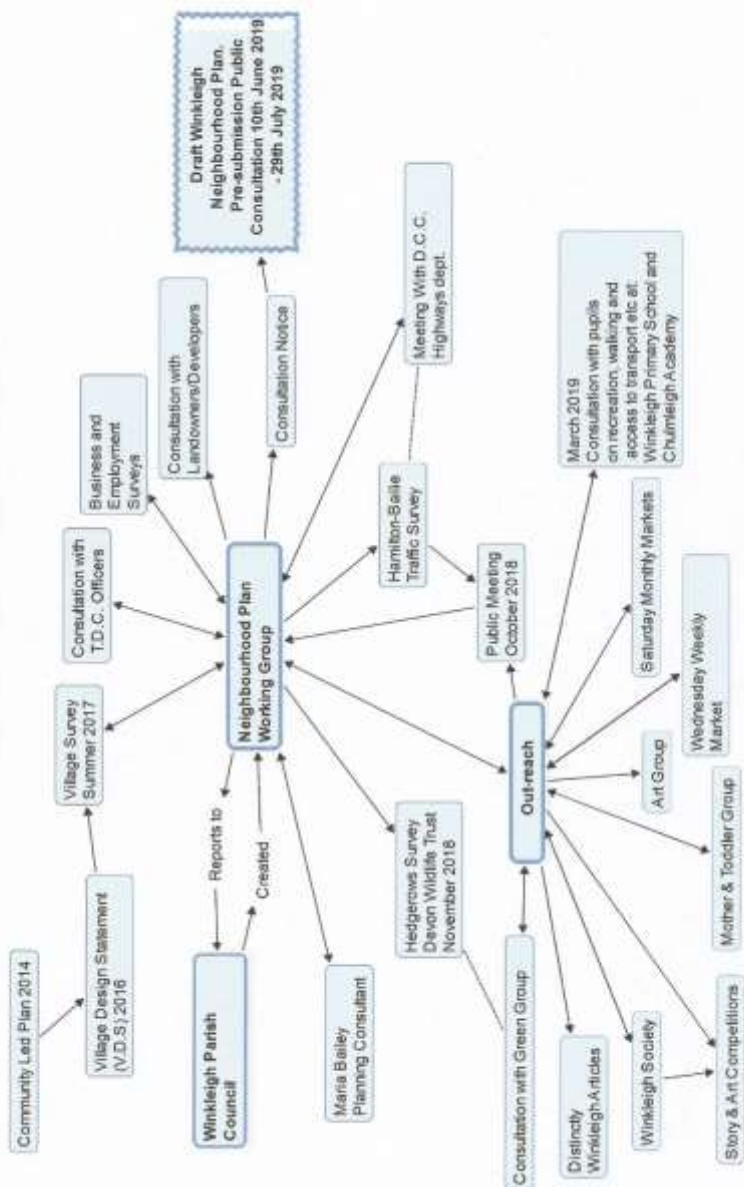
Manor Office, North Street, Crediton EX17 2BR

Other offices at Exeter, Okehampton,
Budleigh Salterton, Ottery St Mary and Sidmouth.

Visit gilbertstephens.co.uk for more information

Gilbert Stephens LLP is authorised and regulated by the Solicitors Regulation Authority (no: 536070)

HOW DID WE GET HERE?



The Winkleigh Singers

This season is giving the Winkleigh Singers an opportunity to join The Artavian Singers in a mass by Marc-Antoine Charpentier (1643 - 1704). 'The Enthronement of a Bishop' is a mass for 4 parts and will be sung by the 2 choirs, accompanied by Artavian Baroque playing period instruments. It is being performed on **Sunday 24th November** at 7 pm, in Marwood Community Hall, Miltown, Muddiford, Barnstaple EX31 4HF. Tickets are £12 via the website www.winkleighsingers.org.uk.

The Christmas Concert this year is being held in 2 venues: **All Saints Parish Church, Winkleigh** on **Saturday 14th December at 7.30 pm** and at **St Hieritha Church, Chittlehampton** on **Sunday 15th December at 4 pm**.

This year marks the thirty-fifth year that this popular event has been taking place in Winkleigh! The festive programme includes **Part One of Handel's Messiah**, the Christmas part of the Oratorio, and, as is the tradition, carols will be sung by the choir with a good selection included for audience participation. These concerts are always a great lift for choir and audience in preparation for the busy days to come over the Christmas season.

Tickets are available from choir members, via the website, or at the door. Also for the Winkleigh concert, they are available through All Saints Church PCC. Accompanied under 16s are free. Anyone interested in joining the choir can speak to a choir member at either of these concerts and then come along in January to our Open Rehearsal (see below).

An Open Rehearsal will take place on Monday 6th January 2020 at 7.30 - 9.30 pm, when there is an invitation to any singers who would like to take part for the evening to come along and see if they would like to join the choir. All voices are welcome, particularly tenors and basses! **This rehearsal will be at the choir's practice venue: The Christian Fellowship Building in Umberleigh, on the A377, opposite the Rising Sun pub.**

If you would like to come along, please let us know via the Contact Form on the website www.winkleighsingers.org.uk or ask a choir member.



The Winkleigh Singers

Registered Charity Number
117121

The Winkleigh Singers also have a full Spring and Summer programme for 2020 including a performance of **Faure's Requiem** and hope you will come along to enjoy these performances.

Gordon Charles Steele VC RN – Centenary Service



On Saturday 17th August, a service commemorating the 100th anniversary of the Victoria Cross to Commander Gordon Charles Steele RN was held at his grave in Winkleigh Cemetery. The service was led by Chaplain Revd Alastair Blaine RN, assisted by Revd Helen Blaine, Priest in Charge at All Saints Winkleigh. The service was attended by about twenty local people, as well as a contingent from **HMS Worcester**, the Merchant Navy training ship, where Commander Steele had trained from 1907, before embarking on his RN career and where later he served as Captain Superintendent until his retirement in 1957.

Gordon Steele was born in Exeter in 1891, the son of a Royal Navy Captain. After leaving school in Ramsgate he enrolled in the Merchant Navy and joined the training ship **HMS Worcester** as a cadet in 1907. During his time on board he won many prizes and was runner-up for the King's Gold Medal competition. When Gordon Steele left the **Worcester**, he joined the **P&O** shipping company as an apprentice cadet and subsequently served as a Third Officer.

Like many former **Worcester** cadets – known as **Old Worcesters (OWs)** he had joined the Royal Naval Reserve and was called up for service with the Royal Navy at the start of World War I. For distinguished service in action he was granted the rare privilege of a permanent transfer to the Royal Navy. He served in Q-Ships, was at the Battle of Jutland and later commanded a patrol boat and a frigate.

In 1919 came his award of the Victoria Cross following an action in Russia against the Bolsheviks in Kronstadt Harbour when he was second-in-command of a coastal motor boat and his commanding officer was shot. He immediately took charge and attacked the Russian battleship **Andrei Petrozovanni**, firing his starboard torpedo and sinking her, then firing his port torpedo at the battlecruiser **Petropavlosk** and damaging her. His commanding officer died shortly after they were picked up by their supporting destroyer.

He was also delighted to receive, as a commemoration from the Worcester cadets of the time, a suitably engraved RN Sword which he proudly wore as one of the “Guard of Honour” for the burial of the Unknown Warrior in London in 1920. This sword is

now on display in the Submarine Museum in Gosport.

After the 1919 episode, he specialised in anti-submarine warfare, but in 1929 he applied for the position of Captain Superintendent on HMS **Worcester** until he retired in 1957, apart from the World War II years when he was recalled to the RN.

During his time as Captain Superintendent, Gordon Steele lived in some style in the traditional grand quarters of a "Wooden Wall" captain. As a bachelor, he took the



somewhat unusual step of having his sister and elderly mother share his quarters and they became valuable members of the **Worcester** team behind the scenes. He had his own rowing gig, which was crewed by the best oarsmen amongst the cadets, to ferry him ashore or to visit other ships. When on board he always took the helm and showed a masterly skill in controlling the vessel.

When he retired in 1957 he handed over a very slick operation which had enormous respect amongst its peers. The various shipping companies of the day were always anxious to recruit **Worcester** cadets and were very generous in their support in other ways: a brand new radar installation was more up-to-date than many ships at sea possessed, also there were several scholarships on offer to potential cadets.

Gordon Steele never married and had no children of his own, but the thousands of cadets that passed through his hands were a huge surrogate family whom he held in great affection. An affection that was reciprocated by so many of them!

His final years were spent in Winkleigh where he was greatly respected by the community. He served the Parish Church as a Lay Reader - a post he greatly relished.

A remembrance service to mark the anniversary is held annually

*Extracted from text by (Capt.) **Geoffrey Dunster**, RD**, OW (1951/1953)*

With additional information from www.hms-worcester.org.uk

Photos by Greg Goldsworthy



YOUR COMPLETE ELECTRICAL SERVICE



We have more than 28 years of experience in electrical contracting throughout Devon.

- » Rewiring
- » New consumer units
- » Minor works
- » New installations
- » Energy saving and LED
- » Fault finding
- » Emergency call outs



We'll take care of it.

**Call us now for a
free estimate and advice.**

Winkleigh - 01837 83900

Bedwell Electrical
The Airfield, Winkleigh
Devon, EX19 8DW

info@bedwellelectrical.co.uk
www.bedwellelectrical.co.uk



Acorn School comes to Winkleigh!

Some of you might have noticed life breathing back into the old 'Little Acorns' building located adjacent to Seckington Cross. Devon-based Phoenix Learning and Care purchased the disused property in August 2018 and following a comprehensive refurbishment opened Acorn school in February this year, after gaining Ofsted approval.

Acorn school already existed in the Phoenix portfolio having been a smaller school located near Knowstone for several years. Continued success called for a larger facility hence relocating to our new site here in Winkleigh. Acorn is an independent school providing primary and secondary special needs education for children aged between 8 to 16 years. Its capacity is circa 35 pupils. **The Head Teacher of the school is Abbie Heard**, who has worked in education for many years and is one of our experienced Head Teachers.

Phoenix Learning and Care is one of the fastest growing companies across the South-West and currently employ over 400 people. We operate specialist care and education facilities including children's homes, primary and secondary schools, and further education colleges, in addition to residential and supported living services for adults.

We strive to be good neighbours and play a part in the communities we serve.

For more details please see www.phoenixlearningcare.co.uk and
www.phoenixschools.org.uk/acorn

Jon Pain – Chief Executive



AIRFIELD

General Maintenance & Repair Garage

- MOTs • Vehicle Diagnostics
- Clutches & Cambelts • Brake & Brake Repair
- General Maintenance • Air Conditioning
- Servicing • Bodywork & Restoration



01837 682 678

www.airfieldgarage.com

The Blue Apron

After a few evening classes and lots of hard work, eighteen months ago The Blue Apron became official and started to sell cakes! For those of you that I have not yet had the pleasure of meeting, I am Becky and The Blue Apron is my small, fully-insured cake business that makes bespoke cakes for any occasion. With a hygiene rating of 5, I make cakes for weddings, childrens birthdays, anniversaries... any occasion that needs cake really!

Specialising in decoration, the business came about from my love for creating, crafting and all things sugary. For me, nothing beats seeing the creations come together, the flavours evolve, the little modelled characters start to take on a life of their own, or the subsequent smiles on peoples' faces when they see their vision become a reality. I love it, it's inspiring and I would love to do it more!

Having lived in this area my entire life, my husband and I were lucky enough to move into the village almost 6 years ago now and have not looked back. It is such a beautiful part of Devon, so friendly and full of inspiration.

I have so appreciated the support that I have received locally and whilst I love many aspects of my job as a nurse, after 11 years, I would love to make cakes my full time vocation!



So if you need cake, keep it local and look me up!

I would love to hear from you.

Becky

Tel: 07930 036 971

www.theblueapron.co.uk

instagram.com/theblueaprondevon

facebook.com/theblueaprondevon



Qixx

Winkleigh

01837 83229

Electrical Contractors

- Rewires, New Builds, Extensions
- Consumer Unit Upgrades
- Showers, Cookers, Heating
- Internal / External Lighting
- Sockets & Telephone points
- CCTV & Networking
- Testing & Inspection (inc PAT Testing)





NOTICE OF CO-OPTION IN OFFICE OF COUNCILLOR TO WINKLEIGH PARISH COUNCIL

NOTICE IS HEREBY GIVEN

That following the Uncontested Parish Election held on 2nd May 2019, the Parish Council now has
4 casual vacancies to fill by co-option

Do you have a few spare hours per week to make a difference?

Become a Councillor and have a say in what happens where you live

be a democratic voice for your Community

**Get involved in decision making, community projects, local planning applications, issues
affecting your community**

be part of a team of Councillors representing and working to benefit our community

No Experience Necessary – Full support and training will be provided for free

To become a Councillor, you must be a UK or Commonwealth Citizen; or be a citizen of the Republic of Ireland; or
be a citizen of another Member State of the European Union

Be at least 18 years old

Be an elector for Winkleigh Parish; or in the last 12 months, occupied land or premises in the Parish of Winkleigh;
or your principal place of work has been within the Parish; or live within 3 miles of Winkleigh Parish Boundary

If you would like more information or require an application form to be co-opted

Please contact

Winkleigh Parish Council Clerk

Melanie Bickell, Lower Itton, Spreyton, EX17 5BB

01837 89095 / winkleighpc1@btconnect.com

29th July 2019

This notice will remain current until all vacancies have been filled

Extract from the Eulogy for John Berry (1940 – 2019)



Benjamin John Berry was born on the 5th March 1940 in a little village called Winkleigh in Devon. His parents were William Joseph Berry and Margaret Anny Brock. John's Dad was a Seaman in the Merchant Navy and sadly passed away in the Plymouth Royal Naval Hospital when John was only 4 years old. John's mum was ill at the time and also had a baby to care for. As a result her three boys, John and his two older brothers, Allan and Cyril, were left to run wild in the village. At the tender age of five, two social workers bundled John and his two brothers into a car and took them to an orphanage at Middlemore in Birmingham, which was established to care for poor

children living on the streets in Birmingham, for the next three years

John did not recall much about life at the orphanage. However, he recalled his life in Winkleigh. One story which he told his grandchildren and great-grandchildren was about one day when he and his brothers were playing in Mr Trenaman's Barn [*on the site of Old Barn Close*]. They heard Mr Trenaman bringing in the cows for the night. Obviously scared they would be caught, they decided to hide in the loft and as a result were locked in. Many hours later the whole village was out looking for them. They were very relieved when found, but never ventured back to the barn.

After World War II the British Government created a policy of forcibly transporting thousands of children designated as orphans to Australia, Canada or New Zealand as child migrants. The government felt that the children should be sent abroad for a healthier lifestyle. John and his brothers were sent to Molong in central-west NSW, Australia. They thought six weeks on the transport ship was a big adventure; however reality kicked on the 8th April 1948 when they finally reached their destination, arriving in Molong by train from Sydney. On arrival, they were stripped



of their travel clothes and given clothing suitable for working on the farm at Fairbridge. Life there was hard and lonely for the 8-year old John as he was separated from his older brothers.

John must have had a determined and resilient streak in him as he decided that he would need to fit in and do as he was told. Chores were allocated and if they weren't done punishment was given. He found his new life was not too bad, made many friends and became involved in sports as quite a good light-weight boxer. He went to Molong School but his education was neglected. This did not stop him as he was one of those people, who could

come up with a way to fix any problem. Aged 17, he left the farm and landed a job working on the construction of Burrendong Dam. He spent five years there during its construction, working tirelessly transporting the large rocks required for building the wall of the Dam and remained there until construction was complete. While working at the Dam he was admitted to Wellington Hospital suffering from pneumonia and he met a blond-haired nurse there. Romance blossomed between John and Bev and they were married in 1961. Before long their two sons David and Rodney were born and they moved to Dubbo.

In 1967 John secured a job with Macquarie County Council, working there until he retired in 2003. John was always a practical joker and many stories can be told of his antics during his working life. He was a diligent worker and a stickler for cleanliness, always punctual and well-presented at work. Well respected by his fellow workers John was always willing to lend a hand in any situation. Respectful to management, he was highly regarded by all who came in contact with him.

For someone who came from humble beginnings in Winkleigh, John became a much-valued asset to his adopted country in both his family life and his work life. He died on 22nd July 2019, leaving his wife Bev and two children, as well as grandchildren & great-grandchildren.

Bill, Margaret & Joyce Brock



FULLY INSURED

Adam of Eden Tree Care

A friendly, family run company providing a range of high quality arboricultural services

**TREE SURGERY · HEDGE TRIMMING · STUMP GRINDING
SITE CLEARANCE · AND MUCH MORE...**

CALL NOW for professional advice and to arrange a no obligation quote

07398 268877
adamofedentrees@gmail.com

Check us out at:  
@adamofedentrees

Derek Miller's 90th Birthday Party



On Sunday 8th September 120 people made their way to 5 Park Place to celebrate Derek's 90th Birthday. The first arrivals were just after 11 o'clock in the morning and the last left at quarter to eleven in the evening.

Derek has lived in Winkleigh all his life and had many memories to share with his guests. He did not want any presents but asked instead for donations to be made to the **Stroke Research Charity; the amount raised was £650**, which was gratefully received by them.

Derek and Margaret thanked everyone who came along to make the day so special and donated so generously. Their daughter Sarah, who made all the preparations for the party, worked tirelessly, helped by the three Garland

girls, Eloise, Daisy May and Penny, who assisted her during the day.

Sarah had created a Memory Book, which included many photographs of Derek's life, to commemorate the occasion and for everyone to sign and leave their good wishes.

Godfrey & Jo Rhodes



ALL SHINES WINDOW & EXTERIOR CLEANING

- WINDOWS
- GUTTERS, SOFFITS, FASCIAS
- SOLAR PANELS
- HOUSE WASH (SOFT METHOD)
- CONSERVATORIES
- ROOF DE-MOSS
- PATIOS, BRICK, PAVING, DRIVE-WAY

Find us on
Facebook

Tel: 01805 938502 - Mob: 07711079577

Winkleigh Environment Group

This group was formed following Winkleigh Parish Council's decision to declare Winkleigh a climate emergency area. The group met for the first time on October 15th, and subsequently on October 29th. Seventeen people attended and expressed a desire to move this project on.

Peter Howard, who lives in the village, is a member of the UNESCO North Devon Biosphere partnership. He has been looking for a **Climate Emergency Reporter from Winkleigh**, to monitor what we have done or are going to do. **Simon Hodgson** has undertaken to fulfil that role. As there are over 30 reporters in the area we should be able to receive valuable information and ideas from them.

The action group has already been added to the **WinkleighOnline** website, where it can be found under **Environment Group** with the following headings:

- **POWER** – Renewable energy – Solar Power, etc.
- **FOOD & FARMING** – Composting - organic gardens – reduce food miles by buying local food locally – agriculture.
- **PLAN BEE** – Help Bees & other insects, wild flower verges, etc.
- **TRAVEL** – Electric cars & charging points, Car-sharing Club, Community Bus.
- **HOUSING** – Ensuring all new builds are so well insulated as to need little or no energy spent on heating, using sustainable materials.
- **RECYCLING** – Reduce, Reuse, Replace – Don't Despair – Repair!

Articles on these topics will be published in future editions of Distinctly Winkleigh; the first one on Travel, is an article on Electric Cars by Marian Minton (page 36).

We have booked the **Village Hall on Saturday 18th January 2020 at 7.00 pm** and, together with food & liquid refreshments, are going to show the French film (with sub titles) "**Demain**", which is a very inspiring look at how we can approach climate change and the environment. **This will be a free event as well as a chance for people to get together to discuss how and what they can do to help.**

Although it is free, tickets for the event will be available from the Post Office or online at Eventbrite, to give us an idea of how much food & drink to provide! More information nearer the time will be available on our Winkleigh Online events page, or the Winkleigh Facebook page, and there will be promotional posters in the village.

Please come along. If we pull together as a Community we can help to change our mind-set from the way we currently lead our lives.

As the climate emergency has in part been led by school children with their climate strike actions, we want to hear their ideas too.

We know that not everyone is able afford an electric vehicle, but **here are 10 things you can do now**, starting today as individuals or as a family, that may actually save you money! (Look out for more ideas in future editions of DW and elsewhere.)

- 1. Kelland Dairy of Lapford provides a milk refill delivery in The Square, Winkleigh at 8 am Monday and 6 pm Thursday. Taw Valley Dairy – milk in returnable Glass Bottles – from the Butcher’s Shop on Tuesday and Friday;
- 2. Use less plastic generally – use own veggie bags (e.g. Veggio Bags) or take your own. Use Refillable water bottles;
- 3. Buy locally – e.g. Organic vegetable boxes from Down Farm or Fiona’s Farm Shop, Local flowers & refillable products from the new shop Catkin Blooms.
- 4. Eat less meat;
- 5. Use natural cleaning, personal hygiene & beauty products. Did you know that vinegar and bi-carb of soda will clean most things;
- 6. Reuse old clothing – upcycle. Buy second-hand more often than new – clothes swap;
- 7. Use less energy by turning your heating down by 1 degree, switching off equipment that is left on stand-by and changing to low energy bulbs. Change energy supplier to a green tariff – often cheaper and promotes use of renewables;
- 8. Car-share, cycle or walk more;
- 9. Grow some of your own food, pesticide-free. Learn more about composting and wormeries;
- 10. TerraCycle & www.proper-job.org – (reasonably local recycling centres) will recycle some plastics & other things not currently taken by local authorities.

It is our aim as a group to offer, or to find advice on any one of the subjects above. Please get in touch with your questions or ideas.

Vicki Samuels - 01837 680036 - vickisamuels@yahoo.co.uk

Alan Jacobs - 01837 83895 - ajrjacobs@live.co.uk

.....

The illustration on the cover of this edition of Distinctly Winkleigh was created by **Elouise Garland** (age 16 years) to complement this article on formation of the **Winkleigh Environment Group** and could even become its logo.

My Electric Car

Nearly 2 years ago I bought an electric (not hybrid) car and I'm still being asked the same questions, so I thought I would share a few - and dispel the myths.

"How many times have you run out of power? You can't do long journeys can you?"

'Never' and 'Yes'. My son visits from Sheffield (he has the same car but newer) and makes one 40 minute stop half-way to re-charge. We each have a Renault Zoe, the small-car end of the market but all come with the latest Satnav which lets you know when you set off that you have enough power for the trip and directs you to the nearest charge point if ever you need it. A display keeps you constantly updated with how many miles you have left, but don't forget going downhill charges up the battery again. My range changes a bit from summer to winter but has never been below 150 miles, and that's plenty. Exeter is only 23 miles away and I bet, like me, 99% of your journeys are local. I've never had a problem and new charge points are popping up all over the place now; perhaps we need some in Winkleigh. By the way, government grants are available for home charge points and mine was free!

"Aren't they dangerous because there's no engine noise?"

Yes they're very quiet, although below 30 mph mine has a noise which automatically comes on. I'm very aware in car parks that pedestrians may not realise I'm there and I'm extra careful, but so far no mishaps. I think we often forget how many people are hard of hearing or wear earphones and don't hear petrol cars. In country lanes horses always hear me before their riders but the motor for the heating is fairly noisy and I sometimes turn that on full for a second so that I don't creep up unawares.

"Big Teslas are fine but aren't the smaller cars underpowered and flimsy?"

Absolutely not. The battery is under the floor and it's big and heavy. The car therefore has a good, solid feel and won't be blown all over the road when you go over the moors in force 10 gales. It's very easy to drive (no gears), and has no trouble accelerating up a steep hill with 4 people on board. Remember though, like all cars, how you drive makes a big difference to fuel consumption. My passengers often comment on the comfort and are usually very impressed.

We all know the importance of reducing fossil fuel consumption so I would urge you to consider making a change. I certainly wouldn't go back.

The best things: No exhausts pipe so no pollution,

No petrol station bills and no going out of my way to fill up,

No car tax,

Instant power to overtake when I need it.

Marian Minton - 23rd October 2019

Career in Education?

The only limit is your imagination...



Acorn is an independent co-educational school which provides learning and supportive learning environment for students from Key Stage 2-4 with Social, Emotional, Mental Health difficulties, Autism Spectrum Condition and/or Specific Learning Difficulties.

We offer the opportunity to work within a truly therapeutic environment with teams dedicated to providing opportunities for children and young people to reach their individual potential; together with excellent employee benefits and opportunities for personal development.

As a result of further expansion to the school we are now seeking the following roles:

Teaching Assistants

Salary: £15,000 - £18,000 per annum

Hours: Full time (40 hours per week)

Contract: Term Time, 38 weeks of the year plus 6 days

Teacher (SEMHD)

Salary: £23,000 - £28,000 per annum

Hours: Full time (40 hours per week)

Contract: Term Time, 38 weeks of the year plus 6 days

For both roles we will require candidates to have a full UK driving licence.



For more information please visit
www.phoenixlearningcare.co.uk/careers.html
or contact our recruitment team on
01271 379006

phoenixlearningcare.co.uk/careers.html

Winkleigh Church Wives Group

In **August** the Wives Group had their annual coach outing, which was to Bude. We were blessed with a “good weather day” and we all had an enjoyable day out.

September saw the start of the year’s meetings, which began with a service in Church taken by Rev. Helen Blaine, the new vicar of the Parish. After the service we returned to the Village Hall for the rest of the meeting, where we had a demonstration by Jean Fletcher on how to prepare and make her Marmite Whirls. We hope that some of us might begin making them for ourselves, or even for “coffee mornings etc.”, at some time in the future.

In **November** we had a visit from the Monkokehampston Handbell Group, who entertained us with a selection of music styles. Our Christmas Fair on November 16th was held in the Village Hall and included our Christmas Hamper Raffle. **The charities we will be supporting this year are the North Devon Hospice and Devon Air Ambulance.**

We have much to look forward to in our forthcoming year of meetings:

In **December** we will have our Social Afternoon with a Quiz. Some of us will also give a reading or tell a story for our own entertainment, as well as having a few festive “nibbles” for us all to enjoy.

We do not have a meeting in **January** but have our Annual Sunday Lunch at Libbaton Golf Club. In **February**, we will be back in the Village Hall for our meeting, when our guest speaker will be the Rev. Helen Blaine.

In **March** we will have a return visit from Mr. John Dike, who last year talked to us about Shackleton and his journey in the Endeavour; this year he will be telling us all about the Battle of Trafalgar.

If you think that you might like to join us at one of our meetings, you would be most welcome as a visitor at any of our meetings. We meet on the 2nd Monday of the month at 2.30 pm in the small rear room of the Village Hall.

Janet Magor (Secretary) - 01837 83799.

FRIENDS

AND

FAMILY

ARE

ALWAYS

WELCOME

LOCAL RATES FOR LOCAL PEOPLE

Are you looking for comfortable affordable accommodation
for visiting friends & family?

Enfield-house-holiday-cottage-devon.uk

Nymet Rowland EX17 6AW

Quote us: *local-svr09*

For up to 15% off your online booking

Contact: 07948 492768

Winkleigh Neighbourhood Watch

Crime figures in Winkleigh for the last two months show only 5 actual crimes and 15 notifiable incidents; let us hope that it continues to be low for the rest of 2019. The Crime Report is posted monthly (or when available) in the Village Hall, Community Centre and anywhere else we can find. **We would like to remind everyone that the report comes from the police and we only pass it on to you for your information.** It is in no way intended to upset and or cause controversy to anyone.

USUAL WARNINGS

Our Neighbourhood Watch alert system has continued to advise us of the scams and fraudulent activities in Devon. You must all take care when answering phones, using social media and any other types of modern electronic items. Never give away your Bank details to strangers over the phone. Hacking of bank accounts and of Social Media i.e. Facebook etc. recently seems to be an even more common occurrence

WINKLEIGH URGENTLY NEEDS YOU - 1

Everyone by now should have realised that DCC are not clearing growing weeds etc. from kerbside gutters or pavements. The growth in some gutters prevents rainwater from entering drains at a speed which in turn keeps the drains clear. Again we ask that if you have this problem outside your premises please clear it away and dispose of the weeds in your green wheelie bins.

**LOCALLY BARN - REARED AND OVEN - READY
CHRISTMAS TURKEYS,
CHICKENS & GEESE**



**MICHAEL WESTERN - MIDDLECOTT FARM
BROADWOODKELLY Tel: 01837 83381
LOCAL DELIVERY AVAILABLE**

WINKLEIGH URGENTLY NEEDS YOU - 2

A little while ago we managed to stop FLY TIPPING by the Litter Bin next to the bench opposite the Bus Stop on the A3124 as well as the one where Barnstaple Street and Torrington Road meet.

Unfortunately the problem has started again and we are asking everyone in the parish if you notice any bags lying around or stuffed in the litter bins themselves to report it to Torridge District Council.

Email: david.rodgers@torridge.gov.uk or Phone 01237 28704 or email recycle@torridge.gov.uk, also send a copy to the Winkleigh Parish Council Clerk, Melanie Bickell on email Winkleighpcl@btconnect.com.

Again we urge you all to carry on being neighbourly and vigilant especially in the winter months. Old or infirm neighbours who cannot get out may need help with shopping etc.

Please also report any suspicious activity to the police on either 101 (for non-life threatening or non- urgent incidents) or 999 (for urgent incidents or where a response is required ASAP), depending on the severity of the incident.

"KEEP' EM PEELED"



**DARTMOOR
GRANITE**

Reclaimed Architectural and
Landscaping Granite

.....

Troughs, Gateposts,
Flagstones, Steps, Garden
Features, Architectural
Building Materials, Walling
Stone, Granite Boulders

.....

We also offer an installation
service.

Phone: 01837 89065
Mobile: 07909 998945
Email: info@dartmoorgranite.co.uk
Web: www.dartmoorgranite.co.uk

Winkleigh School News



The school re-opened in September after the summer break, full of enthusiasm for the exciting year of learning ahead.

The **Nursery Unit** began the year by focusing on the Continents. Specific aspects were selected for the children to learn at their level, so the unit found themselves practising some Tai chi from

Asia, having a movie and popcorn as in North America and experiencing Aboriginal art and music from Australia. The topic then moved onto Harvest with the children joining with the reception class to hold an 'apple day'. There was a visitor from Sam's Cider in the village who kindly bought apple juice to drink and apple pulp for the texture tray, while talking to the children about how to turn apples into tasty drinks.

The transition to school was achieved smoothly by the children in the **Reception Class** who began the year with an 'animals' topic. The topic was based on some high quality children's literature such as 'Elmer' and 'Dear Zoo' along with the old favourite, 'Little Red Hen'. Exmoor Zoo was invited into school bringing a selection of animals, amongst them being an owl, a Meerkat and a snake. These children also enjoyed the 'apple day', with the Nursery Unit, joining in with the tasting and listening to the talk from Sam's Cider. Other activities which they jointly undertook with the younger children included apple painting, printing, juicing and spiralling.

The first topic of the year for the **Year 1** class was 'All about Me' with the children looking at their local neighbourhood and where they live, their skeletons through the 'Funny bones' series of books and their favourite toys through the author Shirley



Open Book

**Construction &
Developments Ltd**

**General Building Works
Period & Listed Building Renovations
Maintenance & Repairs**

For a free, no obligation estimate, please call:

01837 83890 • 07541 002017

info@obcd.co.uk www.obcd.co.uk

Hughes 'Dogger' story. In science, plants and what they need to grow was studied. At harvest-time Year 1 children were invited to take their artwork to decorate the porch of the church and they enjoyed a tour of the church interior amongst the ladies who were working hard arranging flowers and fruits.

Explorers, through the story of Robert Falcon Scott, have been occupying **Year 2** children who have been using atlases to find out about Antarctica. This is linked to their computing studies where they have been learning how to programme rockets. In science, what humans and other animals need to survive has been looked at, including sorting food into groups and looking at the importance of exercise. Fables contain messages on how to live good lives and the children are challenged to find out if they can weed out the message in a variety of different fables before choosing their own message and disguising it in a re-written fable.

Lyme Regis was the destination of a trip for the **Year 3** children studying Rocks and Fossils within their topic of 'Extreme Earth', looking how rocks and fossils are formed and why there are different types of soils. A look at the life and times of Mary Anning linked with this. Children have been basing their writing on the story, 'Meerkat Mail and the Beasties', learning through this about postcards, why they are sent and how they may be written more informally. Through art, how Hokusai lines and textures are used to create waves has been looked at.

Studying the Amazon Rainforest prompted a visit to the Eden Project by **Year 4**, where the rainforest biome provided an abundance of material to help the understanding of the features and layers of the rainforest. Finding out about South



DOWN FARM
Growing food feeding the community

Fresh, delicious, organic veg from our farm in Winkleigh. Visit our online shop/call to order.

Collection points in Winkleigh and surrounding areas.

VEG BOXES AVAILABLE JUNE - DECEMBER
VEG AVAILABLE IN MAD BUTCHERS YEAR ROUND

Contact farmers Olivia & Henry
07739892488 | www.down-farm.com | hello@down-farm.com

America links to a non-European study; this time of the Mayan civilisation. The children have looked at how historical artefacts can help us to understand the lives of people from ancient times. In literacy, 'The Glassmaker's Daughter' has been used to help the children investigate how to write a story about a sad character who finds happiness, thinking about creating setting and emotion through choice of language.

In **Year 5** the children are learning about the Victorians and how challenging life could be for the poorer children. They will learn about the important changes made by people like Dr Barnardo that had significant impacts on their lives. In science, materials and their properties have been looked at. The children have thought about properties like magnetism, whether they are soluble or insoluble, how good they are at insulation and whether changes we make to them are reversible or irreversible.

A 'Tudor' day is being eagerly anticipated by **Year 6** to end their topic on Henry VIII and his wives, when visitors will be coming into school to create a living history day for this era. Crime and punishments, executions and healthcare have been looked at and naturally compared with those of today. Through 'Shackleton's Journey' by William Grill, the children have looked at retelling a significant event through images and text while using a wide range of punctuation to create an impact. In science electrical circuits are being formed and used to make games.

Across the school the **Running Track** has been encouraging a greater level of exercise with classes using it to run laps which build into distances: a mile, 10 miles and then reaching to London, to Paris and even to Tokyo.

Finally, in **November** the whole school turned their minds to the sacrifice made by the local men who gave their lives in the two World Wars when they made the walk up to the church on Remembrance Day, Monday November 11th, paying their respects at the service at 11 am.

Vicki Fenemore – Head Teacher

PS. Come and join the fun at Winkleigh Primary School Christmas Fair on Friday 6th December from 3.30 pm to 5.30 pm. All welcome!



Changes

Ladies & gents Hair and Beauty salon

For all your hair and beauty requirements
A friendly and local salon

Telephone 01837 830004
Exeter Road, Winkleigh

Established
over 30 years

— from the heart of Devon to the heart of your home —

update your bedroom furniture,
transform your storage,
restore your doors, windows or gates



Custom-built, affordable solutions for inside and out, using a range of materials, including sustainable and locally sourced timber.

We are so confident in our traditional craftsmanship blended with modern techniques that all our work carries a 10-year guarantee.

✉ enquiries@bespoakjoinery.com

☎ 01837 680 030

bespoakjoinery.com

Bespoak Furniture & Joinery Ltd. The Workshop,
Middle Reeve, Brushford, Wembworthy, Chulmleigh EX18 7SJ

Contact us
for your **FREE**,
no obligation
quotation

No one is too small to make a Difference

Betsy aged 9, who lives at Elms Meadow, is a great admirer of **Greta Thunberg**. She has closely followed the remarkable campaign by the young Swedish activist on F.Y.I. the Sky Kids News Channel.


“Greta is speaking up for us, our generation and our children. It is us who will face the consequences of ice-cap melting. That is why she went on school strike and stood outside the Swedish Parliament, because the adults were not taking climate change seriously. It is Greta who is speaking up for the penguins and all other endangered species’.

Betsy, who has visited our Parliament with Winkleigh School, added that our Parliament talks too much about Brexit but not enough about climate change.

Very keen on science, Albert Einstein, Florence Nightingale and The Famous Five, Betsy was at ease talking about a range of subjects.

Not so easy for village children to join in protests but believes that children joining together will not be put off by threats of punishment. The children taking part in Extinction Rebellion protests in London and major towns and cities will learn more by meeting up with other schools.

What are her top tips for promoting environmental awareness?



*USE CARS LESS. WALK TO SCHOOL.
USE LESS PLASTIC/RE-USE.
VOLUNTEER FOR BEACH CLEANS.
PLANT SAPLINGS.*

Betsy was interviewed at her home by Penny Griffiths

Okehampton Choral Society Christmas Concerts

Dates for your diaries: **Saturday 14th December at 7:30 pm at Fairplace Church, Okehampton and Monday 16th December at Crediton Congregational Church.**

Okehampton Choral Society will be performing two concerts this Christmas featuring a **Midnight Mass by Marc-Antoine Charpentier and The Sage Bush Carol by the Society's Music Director Andrew Wilson**. There will also be a selection of popular carols for audience participation.

So do come and join us for a fun festive start to your Christmas!
Tickets are £10 (£5 students) available from choir members or on the door.

Macmillan Coffee Morning

Friday 27th September was a bright day and made even brighter by all my friends who came to “Orchard Bungalow”, Wembworthy for my second Macmillan Coffee Morning and contributed with Raffle Prizes and Cakes galore to raise funds for **Macmillan Cancer**. The day was saddened by the death of June Saunders of Wembworthy who died that same morning from cancer, so it was decided to dedicate the whole day to her memory, as she was such a lovely lady.

A huge “thank you” to Francis and Keith from “Wright & Proper” in Winkleigh who made a wonderful Gala Pie and also donated a cake.

Also thank you to all my friends, who came and contributed £435 to such a good cause which now amounts to £900 in two years. Please come again next year and let’s raise even MORE money for such a worthy cause!

Brenda Churcher

Kitchen Makeovers

Great for your pocket and fabulous for the environment

Having a brand-new fitted kitchen can seem like a daunting and expensive prospect, but **Twixtmoors Upcyclers** offer a fantastic hassle free alternative. A kitchen makeover rather than a complete re-fitting has become the latest trend in cost saving home improvement. By painting your kitchen doors, drawer fronts and units, you can achieve a brand new looking kitchen at a fraction of the cost of a new one.

Let’s be honest, most of us don’t really have much scope to completely change the layout of our kitchens; we like our sink in front of the window and in general are bound by existing electrical points, pipe work and doors. If it works well the way it is, why change it?



Built in kitchen units generally have a long-life span, and it's likely that you will want to change the look of your kitchen before the units have come to the end of their life.

This is exactly how Joyce felt when we first met her. She had a beautiful kitchen but felt the wood-stained look dated her otherwise lovely home located at the Four Seasons Village in Winkleigh. We took the doors to our workshops for spray painting, and I went into her home and painted the carcass by hand using Autentico Eggshell in Cement. The effect was transformational, saving thousands of pounds and great for the environment too.

Lorie Randall MBA (Twixtmoors Upcyclers)

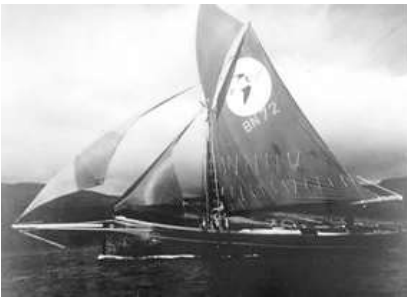
Plastics in the Ocean - Britannia's role once sailing again

Rather than give Distinctly Winkleigh readers another update of our progress in the restoration of our 104-year old sailing ship, Britannia, I thought I would take the opportunity for some reflection and to celebrate the fact that Winkleigh Parish Council has recently declared a Climate Emergency!

There are two reasons that we are spending our retirement saving a piece of Britain's Maritime History – the first is that she needs to be saved and we have pledged to do it, but the second is that, having been seafarers for a long time, we have been aware of the problems of plastics in the ocean as well as global warming for many years. **So our second objective for Britannia, once she is back at sea, is for her to be a flagship for Campaigns for Cleaner Seas and for the speedy reduction of carbon emissions. Whilst we are busy rebuilding our boat, we are more than delighted to be part of the newly formed Winkleigh Environmental Group, meaning that the awareness-raising starts here and now!**

It is almost two years this December since we brought Britannia overland to Winkleigh. I remember my thoughts at the time, in December 2017 when I wrote in the 'Crew Britannia Blog': **"Today is a big day. The United Nations at their summit in Nairobi are discussing the growing problem of plastic islands in our oceans".**

About the same time I wrote: "There was a huge public reaction to last week's episode of 'The Blue Planet' where a pilot whale mother was filmed refusing to let



go of her dead baby. The reason for the death was most probably a high level of PCB's in the mother's milk, which effectively poisoned the calf. This in itself is more than sad, but I also recently learned of something that has affected me personally.

"Between 1982 and 1996 we sailed Britannia on the West Coast of Scotland, taking passengers every week to enjoy the beautiful scenery and abundant wildlife.

Every year we made several sightings of a large pod of Orcas (Killer Whales), more than 40 creatures, known as the West Coast Community Orca pod. They are the UK's only resident pod of Orcas, although I didn't know that then. When we saw these magnificent creatures, we were full of wonder and awe and felt hugely privileged to be able to view them so closely, hear them blowing and, yes, smell them!

"At the beginning of 2016 a female orca was washed up on the shore of Tiree, a small Hebridean island. She was identified as a member of the now dwindling West Coast

Community Orca pod. Her death must have been excruciating as she had been entangled in fishing rope, which had prevented her from swimming, ultimately causing her to suffocate. **The West Coast pod now has just 8 individuals, 4 males and 4 females with no calves having been observed for 20 years!!** If that isn't bad



enough, on examining the female's body - she had been named Lulu - it was discovered that:

‘The levels of PCB contamination in Lulu were incredibly high, surprisingly so. They were 20 times higher than the safe level that we would expect for cetaceans to be able to manage. That puts her as one of the most contaminated animals on the planet in

terms of PCB burden, and does raise serious questions for the long-term survivability of this group (of UK killer whales)’ - Dr Andrew Brownlow, Head of the Scottish Marine Animal Stranding Scheme.

The chance of survival for the remaining members of this pod of orcas is slim, and if they are unable to breed or keep their calves alive, they will soon become extinct.

This is heart-breaking and a tragedy that need not be happening. We must stop producing plastics that cannot be disposed of safely without harming our environment. We must all work together to stop polluting our seas and our beautiful planet before it is too late, as it is for this iconic West Coast Community of Orcas.”

Now in 2019 there is a real feeling of change in the air as more and more people have become aware of the true effects of polluting the sea, due partly to the Blue Planet effect, and the young people of the world school striking for the climate, inspired by Greta Thunberg.

The ocean is downstream from everything - waste plastics journey from street to streams to rivers and finally the sea. But it is not just large, visible plastics in the ocean building huge hideous and lethal plastic islands that are a danger. Much more work needs to be done to ensure that PCBs currently in landfill sites are locked-in and secured so they can't leach out into rivers and estuaries. Similarly, chemicals on the land are washed into the ocean by the same route.

This tragic tale of the West Coast Orcas makes us, The Board of Britannia Sailing Trust, even more determined to get our historic boat back to sea and working to try and make a small difference.

If you want to help us, we need volunteers to get involved in many ways, please contact Sam or Vicki, on 01837 680036 or email vickisamuels@yahoo.co.uk. Check out our website www.britanniasailingtrust.org or our Facebook page – www.facebook.com/britanniasailingtrust for updates and more information.

Devon Wildlife Trust Culm Grassland Natural Flood Management

This four year project across North Devon is helping us to understand, communicate and assess the flood risk and wildlife benefits that Culm grasslands bring to the area

About the project - The Culm Grassland Natural Flood Management Project is led by Devon Wildlife Trust (DWT), supported by a number of other agencies. Delivery is supported by a partnership of EA, DCC, University of Exeter and Natural England. The project started in October 2016 and runs to September 2020.

Project Update autumn 2019 - The summer of 2019 has been a busy time in the project. Working with local landowners, we have carried out wet grassland habitat creation works on just over 30 hectares, spreading 187 bales of green hay and over 300 kg of seeds over



nine sites across the Taw, Torridge and Tamar catchments. Six sites received green hay which was supplemented with wildflower seeds from local species-rich donor sites and three sites received a heavy drenching of wildflower seeds. Sites that were seeded in 2016 and 2017 are already looking fantastic and we hope that this tranche of sites will fare equally well, increasing in value for wildlife and contributing to natural flood management, whilst forming part of a productive farm system.



We ran two very successful workshops over the summer: a 'Culm grassland management' day at Lower Ash Moor farm, kindly hosted by the inimitable Cyril Cole, was attended by nearly 40 landowners; and a botanical training day led by Devon Biodiversity Records Centre gave a

grounding in Culm wildflower identification to the dozen landowners and volunteers who joined us. We have also given talks and led walks for a several local community groups.

The Stewardship season was quieter than usual, possibly due to uncertainties over the political situation. Nevertheless we were able to assist several landowners in putting together Countryside Stewardship applications for their Culm grassland. These schemes should bring income to aid with managing these beautiful sites over the next five years.

Looking ahead - As the project enters its final year we are still keen to meet land owners with Culm grassland, or those who would like to improve any parts of their holding for wildlife. Our volunteer group will be busy helping to manage scrub on some sites so do get in touch if you would like to find out about opportunities to join us in some practical volunteer work. Likewise if you simply wish to learn more about the project - get in touch!

Email tparsons@devonwildlifetrust.org or lbutt@devonwildlifetrust.org or ssmallwood@devonwildlifetrust.org or call 01409 221823.

We look forward to hearing from you.



**Seminar for patients
at Wallingbrook Health Centre
Thursday 5th December, 2pm
All welcome!**

Seeing the same doctor allows better doctor-patient understanding and can lead to improved healthcare.

This general practice has agreed to take part in a project aimed at finding ways to improve continuity of GP care for all patients.

Come along to the seminar to learn about this project, to learn about the research on continuity of care and to share your own views and experience.

Continuity Counts Health Improvement Project

Led by St Leonard's Research Practice

Funded by The Health Foundation



**The
Health
Foundation**

Wallingbrook Health Group

Flute tuition for mature pupils

Explore and enjoy interesting music whether you are a late beginner, rusty returner, or improver of any standard or age.

Feel a sense of achievement when you master a piece of music, or maybe gain the confidence to play in a band.

Whatever your motivation or standard I can provide a wealth of musical experience, and specialist knowledge of the flute.

Jacquie Kenny LTCL AMusLCM. Phone: 01837 851793

ACE Archaeology Club



On the 2nd of November we had our Annual General Meeting so now seems like a good time to look back on the past year's events and successes and to look forward to next year. Part of the AGM is devoted to sorting out our excavation dates and to setting up our ACE days.

The ACE days take place on the first Saturday of every month and we try to arrange a variety of activities. After several years of having to cancel outdoor activities in the winter months, we are going for indoor activities, mostly around sorting out our finds from the Moistown dig, but also including a talk on Iron Age enclosures from one of our members. From March we hope to be able to get outside again and will be looking at finding and recording medieval graffiti in churches and old houses, some experimental archaeology, a few walks and preparation for our summer dig.

For more information on our activities and for dates please do have a look at our website. <https://acearchaeologyclub.wordpress.com>

The Moistown Excavation

This year was our 6th working at Moistown. We are gradually opening up more and more of what is quite a large site, we think, of a medieval farmhouse.

There is a lot of measuring involved, especially in the last few days, but not sure what our director had



Storage containers to rent near Winkleigh

20 foot x 8 foot x 8 foot high

Long or short term rentals, from £20 per week

For more details please call Julian on 07947 877284

or e-mail julian.tolley@btinternet.com

W H T Letting



done with meter square grid!

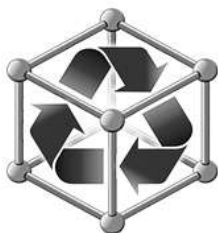
We have uncovered a large hearth area bordering a concrete floor. Next year we hope to be able to go through the concrete floor and see what is underneath. We will also be opening more trenches so who knows what we will find.

We hope to be able to get some more diggers next year as we were rather short of them this year. However we did welcome some new diggers, some of whom had never dug before and who want to come back next year, which is great. The more diggers, the more we can open up. It isn't all about digging though; we can also use people to help us with what we find. We also have to do some precision drawing towards the end of the dig, perhaps you might be good at that?

Please do get in touch if you think archaeology is something that might interest you.

Photos show some finds (and also Archaeoduck!).

Erica Williamson ACE - surica47@gmail.com



Twixtmoors ~upcyclers~

Wooden Furniture Restoration

Reupholstering and Recovering Chairs Sofas and Ottoman

Kitchen Makeovers and Home Decor Services

Workshops and Training (at your place or ours)

Autentico Paint Supplies for Interior and Exterior DIY Projects

Tel: 01837 83148

www.facebook.com/twixtmoors

Info@twixtmoors.com

www.twixtmoors.com


Autentico®
INSPIRING PAINTS

Unit 2

The Airfield

Winkleigh EX19 8DW

(on the Bedwell site)

Opening hours - we are here most days from 9 am til 6.00 pm

Should the front roller shutter door be down, please use the first entrance on the left hand side of the building

LAURA AND KATH PRESENT

The Dolton Village Hall Masked Rock Ball

Supporting our Community

SATURDAY 7TH DECEMBER
8PM-MIDNIGHT

Dress up to the
nines and wear a
mask or come as
your favourite
Rock Star or
yourself!

**Great Music
From**

**Raw
Ambition**

Along with Dolton's
Legendary DJ's

£8 Early Bird
tickets
(limited amount)
from Church Street
Stores or
lsslaus@gmail.com
£10 Tickets on the
door

A pre-RockBall
Dinner Deal
available from
the Rams Head
Inn or Royal
Oak 6pm-8pm

A donation will go
to the Dolton
Carnival Fund

Licensed Bar and Raffle

S L PASSMORE.
PLASTERING
CONTRACTOR.

ALL TYPES OF INDOOR PLASTERING AND PLASTERBOARDING
AND DAMPPROOFING.

20 YEARS EXPERIENCE....
CALL STEVE ON 07584284256
EMAIL: slpassmore23@gmail.com



**FIND US ON
FACEBOOK, SLPASSMORE.**



SB Plumbing and General Maintenance

Small plumbing repairs
01805 603901
07754819750

Email: sb.plumbing@hotmail.com

Changing taps, washers,
outside taps,
plumbing in washing machines
and
other small plumbing jobs

Also general maintenance work

Just give me a call
for good old fashioned service

WINKLEIGH ART GROUP - EXHIBITION



Thursday 21st to 28th November

Between from 10 am & 4 pm

Evening viewing on Friday 5 -7 pm

Venue: The Sculpture School, North Tawton,
EX20 2AP

Dog Mess Alert - Again

A repeat anti-social problem of dog mess around the village has been reported by several residents. One mother has said walking the children to school requires them all to be on 'dog-poo alert'. Another resident has complained that a large dog is leaving unpleasant calling cards overnight in Clifford's Way.



THE SHIFTERS

Spirebourne Limited

Liquid Waste Disposal and Drainage Co

EMERGENCY CALL OUTS

Septic Tank/Cess Pool Emptying – Any Size
Grease Traps
Drain Blockage Clearance
Various Commercial Liquid Waste Disposal
Servicing
CCTV Drainage Surveys
Pump Repairs & Renewals
Installation of Septic Tanks & Sewage
Treatment Works
Mantair Units

FREEPHONE 08000 855 185

spirebourne@hotmail.co.uk
www.spirebourne.co.uk

www.ashridge-court.co.uk
01837 352025
info@ashridge-court.co.uk



The Ashridge Great Barn	Ashridge Court Farm
<p>Nestled in a private valley, the Ashridge Great Barn offers a large flexible space with inbuilt facilities for a event with proper rustic style</p> <p>Keep an eye on the website or follow us on social media @ashridgecourtfarm for information on Community Events and Pop-up Restaurants</p> <p>Get in touch to book for Weddings, Parties and Other Events</p>	<p>Grass-fed Beef Boxes Large or Small Mixed Cuts Requests Accommodated Where Practical</p> <p>Free Range Christmas Goose</p> <p>Seasoned Hardwood Logs</p> <p>Coppice Products Pee Sticks and Bean Poles</p> <p>Sawn Wood Products</p>



Credit: Watercolour Woodshed

Open Orchestra Rehearsal with the Bondleigh Barn Band

The Chulmleigh and District Society is delighted to be sponsoring an opportunity for anyone who would enjoy the experience of playing in an orchestra to do so by playing alongside the **Bondleigh Barn Band on Saturday 14th March 2020 at Chulmleigh Pavilion, Leigh Road, Chulmleigh EX18 7JW.**

The band began in 2013 with six players and Richard Edwards, its musical director, meeting in a barn in Bondleigh. It now has over 40 players who meet once a fortnight to enjoy making music together. **It has been increasingly invited to play in public and has raised over £13,000 for local causes and charities.**

Richard said "This is an opportunity for anyone who fancies the idea to come along and enjoy the fun of making music with other folk. In rehearsal the band will prepare music it has not seen before and would welcome visitors to sit with them and play along. We cater for violin, viola, 'cello, double bass, oboe, clarinet, bassoon, trumpet, French horn, flute, tenor saxophone, acoustic guitar, banjo and keyboard. If you play any other instrument please contact us and we shall endeavour to make provision for you".

To participate in this FREE event please contact Liz Wesson on 01769 580005 or email liz.athome@live.com giving your name, instrument, what sort of standard you are (however rusty, whatever age) and if you would like afternoon tea. Music will then be prepared for you accordingly.

Sueno Beauty

Changes, Exeter Road, Winkleigh. EX19 8HW

Aesthetic, Massage & Holistic Therapies

- Swedish Massage
- Deep Tissue Massage
- Aromatherapy Massage
- Hot Stone Massage
- Hopi Ear Candles
- Reflexology
- Micropigmentation
- Micro Needling

Contact: Gemma Jenkins Tel: 07590233607

Email: suenobeauty@outlook.com

Facebook: [@Suenobeauty](https://www.facebook.com/Suenobeauty)

1st Dolton & Winkleigh Cubs



1st Dolton & Winkleigh Cubs visited PGL Beam House, Torrington, in September where we had a weekend of challenging activities, good food and sunny weather. The Cubs had great fun completing the obstacle course which ended up with them sat in a mud pit! They also took part in quad biking, abseiling, zip wires and a blind-fold sensory trial. Some of them really had to dig deep to overcome their fears and it was lovely to see the cubs being so encouraging of each other - especially since teamwork was the theme of the weekend!



We've made the most of our last few weeks being outside by cooking baked apples over fires and visiting Down Farm near Winkleigh to make soup using their organic vegetables. Last week saw the Cubs spinning wool when Wyn Chambers of Dolton kindly came along to let us have a go on her spinning wheel, à la Sleeping Beauty! We are having a few busy weekends before the end of the year; we have been preparing costumes and a float for Dolton Carnival on 2nd November (unfortunately cancelled), then we have a jumble sale, Remembrance Sunday and finally a Christmas sleepover.

We always love to hear from anyone who has any interests or hobbies to share with the Cubs. Please contact us if you could give up an hour of your time to come along to Cubs one evening to show or tell us what it is you do; anyone from plumbers to chimney-sweeps, and anyone in between, are welcome!

Submitted by Akela

CoHeat Services

Oil-fired Heating and Cooker Specialists



Oil-fired Boiler, Rayburn and Aga Servicing

New heating systems fitted

All plumbing work undertaken no matter how small

Heating systems updated.

Complete bathrooms and kitchens including tiling and all associated

works carried out. You supply, I fit, or I supply everything

and fit as long as you supply coffee . . .

For a free quote or just friendly advice call John on

01837 83080 or 07768 164696

Forget-Me-Not Café

We are very pleased to confirm that the Big Lottery has once more granted us an award. This will allow us to access the services of Trish Burke our Professional Advisor, without whom our small band of volunteers would be mere dispensers of tea, coffee, cake and sympathy!

We can now look ahead to a full year of twice-weekly events in the Community Centre as well as a Surgery for Carers on the second Wednesday morning of each month.

Singing and movements to music are both excellent for the brain – trigger and coordination – but above all, it is great fun for both Patients and Carers. Some outings this year took us to visit an Alpaca Farm and also War Horse, both ending with a cream tea. Remaining with the musical theme, we loved the Mandolin Trio and the Singing Ringers.

We had talks from the Britannia Trust, the Emergency Red Button Alarm, a local Author, the Fire Brigade/new gadgets, Bingo and Poetry.

In addition, our Patients enjoyed some Aroma Therapy Massage and on the Art scene, we had Painting on Pottery and will be making some Christmas decorations under expert tuition.

The monies will also help to ensure that all our volunteers are DBS checked and that we all receive yearly training in coping with Loneliness/Isolation and giving advice on health and wellbeing.

We would like to thank Winkleigh Morris, Mrs Janet Childs and the late Mrs Glenice Boughton for their generous donations.

Finally, we should say that our door is always open to New, Serious Volunteers, Carers and Nurses – as well as anyone who is having to deal personally with memory-related problems.

**COVERING ALL EXCAVATIONS AND GROUNDWORKS
BOTH LARGE AND SMALL PROJECTS AT COMPETITIVE PRICES**



**FULLY INSURED
HEDGE-TRIMMING FLAIL &
CIRCULAR SAW
FIREWOOD PROCESSING**
CALL MARTIN ON 07817464420
EMAIL: PARISH@BTINTERNET.CO.UK
WWW.MPCONTRACTS.CO.UK
**FACEBOOK: MARTIN PARISH
CONTRACTING**

A Big “Thank You” from Jennie Gill



I would like to thank all my friends from Winkleigh, Monkokehampton, Hatherleigh, Wembworthy, North Tawton and further afield who came to my **“Tea & Cakes in the Barn” on Wednesday 11th September to celebrate my 80th Birthday!**

Also the various Classic Car Club members who turned up in their wonderful cars to put on display in our field – a wonderful sight. Unfortunately, due to a chest infection I had lost my voice so I held up a laminated notice advising everyone that I couldn't talk or have a chat. My lovely husband, Alan, had to do all the talking for me!!



I cannot believe that 142 folk signed my Birthday Book and despite the weather being a bit on the damp side, everyone appeared to have a good time with all the laughter and jollity which created a brilliant atmosphere in the Barn. Many braved the weather to have a wander around the Garden and Veggie Patch.

Although the afternoon wasn't designed as a “Charity” event; because we are firm supporters of **Devon Air Ambulance** who saved Alan's life, I put a box on the Cake Table and said nothing about it, but **many donations were put in and we raised over £200 to give to Devon**

Air Ambulance which is just great, so thank you to all those who donated and also gave me lots of cards and presents. **It was a truly memorable day – all I can say is a HUGE “Thank You” to everyone who came along.**

Jennie Gill



HC Joinery
Bespoke Joinery Services

Harry Colgrave
Joiner

All aspects of joinery work undertaken.

Doors, windows, panelling, door canopies/porches, restoration projects, repair neglected doors and windows.

hcc2010@hotmail.co.uk
07517110668



Summerhayes, Ingleigh Green,
Winkleigh, EX19 8AT

Muddy Shoes around Winkleigh



On October 30th, seven of us gathered for lunch at the Lymington Arms, then a hardy bunch of five walkers and one dog braved the rain to walk across Abbotsham Moor to the Brushford lane and round in a big circle back to Lama Cross. This walk was 3 miles and took us across fields and along tracks – we felt far from the bustle of modern life, following these ancient routes.

If you are looking for an opportunity to get out into our beautiful countryside, with a group of friendly people, here is an opportunity.

Walks are being planned now for the winter months. We try to arrange them at times to suit most people, usually mid-week. We normally walk for 2 hours or so, about 5 miles, and sometimes manage to organise a cup of tea or a pub stop, too. If we find any problems, we report them to the local Rights of Way Officer.

For more information, you can ring Penny on 01837 83407 or contact Muddy Shoes at trulywildabout@gmail.com.



Give your best friend a holiday too!

Three Oaks Dog Boarding and Day Care

Fully licenced and insured home from home dog boarding located in Winkleigh

When you go away you want to be able to relax knowing your dog is safe and happy. With us he/she will be looked after in a safe and secure home environment.

For more information or to make a booking please call Ginny on 01837 680141 or 07768 395988



www.facebook.com/ThreeOaksDogBoarding/

Licence No. ANACT/00071/19 Insured by Protectivity

Word Search

B	P	T	V	C	T	I	B	A	O	L	S	C	M	V
A	R	X	J	E	G	A	M	L	I	O	F	Y	T	D
S	Q	M	M	Y	I	O	I	O	U	N	F	L	S	J
D	J	S	F	W	H	V	N	T	C	A	E	R	F	R
E	I	K	W	A	E	K	H	O	I	S	E	B	M	W
K	B	M	L	R	I	P	A	R	M	H	E	T	S	V
C	G	K	Z	N	A	D	L	I	T	R	O	T	S	C
I	O	X	G	C	L	A	S	O	H	L	A	F	A	M
W	C	A	I	I	D	E	R	C	E	C	C	B	J	A
J	C	F	T	Y	R	B	D	M	H	G	E	L	S	M
C	I	A	E	A	D	A	A	Q	J	R	G	A	U	M
C	M	F	B	O	O	C	I	R	E	Q	O	V	G	A
Y	Q	L	O	U	M	C	Z	T	U	B	C	P	B	M
N	E	L	M	Y	E	Q	P	U	B	Q	F	I	I	I
S	B	M	W	N	A	N	R	K	L	V	N	W	E	A

BLOOD BROTHERS
CABERET
CAMELOT
CATS
KISMET

LES MISERABLES
LION KING
MAMMA MIA
MATILDA
MY FAIR LADY

OKLAHOMA
OLIVER
SOUTH PACIFIC
WICKED

Solution on page 62



WINKLEIGH

07970 963450

INSTALLATION &

**NEW AERIALS &
FREESAT**

AERIALS

0800 0930 625

MAINTENANCE

**CARADON HILL
HUNTSHAW CROSS
STOCKLAND HILL**



Digital Aerial
Installations

TV'S - BT VISION - HUMAX PVR - SET TOP BOX

RE-TUNING SERVICE



Number Puzzle

	2	5				9	3	
			6		5	2	7	1
1		6			9	4		
6		2		7			1	
	3						4	
	8			9		7		3
		4	1			3		7
7	9	8	3		6			
	1	3				6	5	

Solution on page 62

Winkleigh POST OFFICE

~ Not just a Post Office! ~

Large range of Greetings Cards, Gift wrap & Tags

Toys & Stationery, Photocopying

Business & Private Banking

of Cheques and Cash

Laundry & Dry Cleaning

Travel Money

Car Tax

Mobile top-ups & electric key charging

Cash Withdrawals at the Counter

Open 8.30 am-5.30 pm Mon-Fri

9 am-1 pm Sat

01837 83427

Owner: Tony Bayley

Solutions

8	2	5	7	1	4	9	3	6
3	4	9	6	8	5	2	7	1
1	7	6	2	3	9	4	8	5
6	5	2	4	7	3	8	1	9
9	3	7	8	6	1	5	4	2
4	8	1	5	9	2	7	6	3
5	6	4	1	2	8	3	9	7
7	9	8	3	5	6	1	2	4
2	1	3	9	4	7	6	5	8

B	P	T	V	C	T	I	B	A	O	L	S	C	M	V
A	R	X	J	E	G	A	M	L	I	O	F	Y	T	D
S	Q	M	M	Y	I	O	I	O	U	N	F	L	S	J
D	J	S	F	W	H	V	N	T	C	A	E	R	F	R
E	I	K	W	A	E	K	H	O	I	S	E	B	M	W
K	B	M	L	R	I	P	A	R	M	H	E	T	S	V
C	G	K	Z	N	A	D	L	I	T	R	O	T	S	C
I	O	X	G	C	L	A	S	O	H	L	A	F	A	M
W	C	A	I	I	D	E	R	C	E	C	C	B	J	A
J	C	F	T	Y	R	B	D	M	H	G	E	L	S	M
C	I	A	E	A	D	A	A	Q	J	R	G	A	U	M
C	M	F	B	O	O	C	I	R	E	Q	O	V	G	A
Y	Q	L	O	U	M	C	Z	T	U	B	C	P	B	M
N	E	L	M	Y	E	Q	P	U	B	Q	F	I	I	I
S	B	M	W	N	A	N	R	K	L	V	N	W	E	A

TEN ACRES VINEYARD



SHOP OPEN Thurs - Tues (10am-8pm)

TOURS Sat 5pm (all season) & Thurs 4pm (July/Aug)

Booking (01837) 83892 www.tenacresvineyardcamping.co.uk

Heating, Cooking & Living.

- Stoves • Range Cookers & Cookware • Renewables
- Flues & Chimneys • Spares & Accessories • Logs



We have one of the largest selections of stoves, range cookers, renewables, spares, accessories, flues and chimneys in the UK. Our knowledgeable and experienced staff are just a 'phone call away or why not visit our showroom just outside Winkleigh?

OPEN MONDAY TO SATURDAY, 9AM - 5PM.

Telephone 01837 680068

www.rangemoors.co.uk



What's On Diary – 2019 - 2020

All dates & details are believed to be correct at the time of going to press.

Please send details of your events to articles@distinctlywinkleigh.co.uk

Changes will be notified via the online diary at www.winkleighonline.com.

November	
21 st to 28 th from 10 – 4 pm + Friday 5 – 7 pm	Winkleigh Art Group Exhibition at The Sculpture School, North Tawton EX20 2AP
28 th - 7.30 for 8 pm start	District Community Transport Group Christmas Bingo at Okehampton Conservative Club
30 th - 7.30 for 8 pm start	Winkleigh Fair "Big Quiz", Village Hall
December	
1 st at 4 pm	Advent Carols, St Mary the Virgin, Brushford
4 th from 2 – 4 pm	Forget-Me-Not-Friends - Community Centre
5 th starting at 2 pm	Continuity Counts Seminar for patients, Wallingbrook Health Centre, Chulmleigh
6 th from 3.30 to 5.30 pm	Winkleigh Primary School Christmas Fair
7 th from 4.30 – 8 pm	Winkleigh Fair Christmas Market & Lights Switch-On, Winkleigh Square
7 th starting at 8 pm - midnight	Masked Rock Ball Christmas Party, Dolton Village Hall
11 th – 9.30 – 11 am	Forget-Me-Not-Friends Advice Surgery - Community Centre
14 th – Time - <i>see posters</i>	Kings Arms Aunt Sally Team Pantomime: 'Cinderella' – <i>further details to follow</i>
14 th starting at 7.30 pm	Winkleigh Singers Christmas Concert, Winkleigh Parish Church
14 th & 16 th at -7.30 pm	Okehampton Choral Society Christmas Concert – Fairplace Church Okehampton & Crediton Congregational Church
15 th starting at 4 pm	Winkleigh Singers Christmas Concert, Chittlehampton Parish Church
18 th from 2 – 4 pm	Forget-Me-Not-Friends - Community Centre
19 th – <i>see posters</i>	Carols in the Kings Arms

22 nd at 4.30 pm	Nativity Tractor Parade through the village Finishing at the Methodist Chapel
24 th at 5 pm and at 1145 pm	Carols round the Crib Midnight Mass, All Saints, Winkleigh
25 th at 9.30 am	Family Eucharist, All Saints, Winkleigh
25 th at 10 30 am	Short Celebration Service – Methodist Chapel
29 th at 10 am	Joint Mission Community Eucharist, St Mary the Virgin, Brushford
31 st	Information Directory – Closing date for Changes
<i>January</i>	
6 th from 7.30 – 9.30 pm	Winkleigh Singers Open Rehearsal, Christian Fellowship Building, UMBERLEIGH (on A377)
8 th from 2 – 4 pm	Forget-Me-Not-Friends - Community Centre
12 th at 6 pm	Plough Sunday Service, Parsonage Farm, Iddesleigh
15 th – 9.30 – 11 am	Forget-Me-Not-Friends Advice Surgery - Community Centre
18 th starting at 7 pm	Showing of the French film “Demain”, Village Hall, FREE ENTRY
19 th at 4 pm	Christingle Service, All Hallows, Broadwoodkelly
22 nd from 2 – 4 pm	Forget-Me-Not-Friends - Community Centre
<i>February</i>	
5 th from 2 – 4 pm	Forget-Me-Not-Friends - Community Centre
13 th & 20 th – 6 – 7 pm	Winkleigh Youth Judo Club ‘Taster Sessions’, Community Centre
19 th – 9.30 – 11 am	Forget-Me-Not-Friends Advice Surgery - Community Centre
19 th from 2 – 4 pm	Forget-Me-Not-Friends - Community Centre
26 th at 7 pm	Ash Wednesday Service, All Saints, Winkleigh
<i>March</i>	
14 th from 3 pm	Open Rehearsal with Bondleigh Barn Band, Chulmleigh Pavilion, EX18 7JW – Open Rehearsal + 4.30 pm Afternoon Tea + 6 – 7 pm Concert

And Finally

As we wonder where 2019 has gone and enter a new decade, who knows what the next year will bring? However, as our Diary shows, in Winkleigh things continue pretty much unchanged. As you will have read, the Winkleigh Environment Group is now up and running, so we look forward to hearing more from them in 2020.

We would like to thank everyone who sends us such a wide variety of articles, as well as our advertisers, without whom we could not continue to operate, our proof-readers and our team of distributors, who work hard to deliver each edition to you.

Please do keep sending in your contributions, as well as letting us know how we are doing – what you like and what you don't like so much. This year it is good that we have received items from some of our younger readers, so we look forward to hearing more from them in 2020.

The deadline for contributions to the next edition of Distinctly Winkleigh is NOON on Friday 14th February 2020 for both articles and adverts.

Publication / distribution is planned for the weekend of 28th February.

Finally it only remains to wish everyone

A Very Merry Christmas and a Happy New Year

JOSH NOON
TREE SERVICES
TREE SURGERY &
LOW IMPACT FORESTRY
QUALITY SEASONED LOGS
& KINDLING FOR SALE



 **01363 83908**
 **07792 906258**



JAD MOTTRAM
PLUMBING & HEATING

Gas • LPG • Oil • Solid Fuel

All Plumbing & Heating Works
Multi Fuel & Wood Burning Stoves
Drainage & Septic Tank Installation
Residential Park Homes
Static Caravans

www.plumberinsouthmolton.co.uk
jadmottram@hotmail.com

01769 560985 / 07933 166664





John Short

Professional Interior & Exterior
Painting and Decorating

Clotworthy House, Torrington Road,
Winkleigh, Devon, EX19 8HR

Telephone: 01837 83709

W.D & S.J CARNE



*Independent Family Owned
Funeral Directors*



Established over 60 years
Personal Attention Day and Night

Carney Cottage, Winkleigh, Devon, EX19 8HX

Email: wdandsjcarne@gmail.com

Tel: 01837 680199/83387

Pre-paid and Bespoke Funeral Plans Available

DISTINCTLY WINKLEIGH - PUBLICATION INFORMATION

Publication by **The Winkleigh Society** is quarterly at the **end of February, May, August and November**. Copies are distributed free to households and businesses in the Parish. The views expressed in submitted material are not necessarily those of the newsletter team or The Winkleigh Society.

All readers are most welcome to send in Articles (or reports, letters, drawings, etc.).

Articles may be subject to editing, primarily for space or layout reasons.

Articles can be emailed to *articles@distinctlywinkleigh.co.uk*, or sent to the Editor.

Advertisements from businesses in the local area should be emailed to *adverts@distinctlywinkleigh.co.uk*, or sent to the Editor

The deadline for material is NOON on the second Friday of each publication month.

ADVERTISING RATES

	Quarter Page	Half Page	Full Page
1 edition	£12.50	£25.00	£50.00
2 editions	£25.00	£50.00	£100.00
3 editions	£37.50	£75.00	£150.00
4 editions	£50.00	£100.00	£200.00

Contributions to the newsletter can be accepted in written or typed form, memory stick, or email attachments in WORD, PDF, PNG or JPEG file formats.

EDITOR

Godfrey Rhodes, 32 Westcots Drive, Winkleigh EX19 8JP - Tel: **01837 682982**

WINKLEIGH SOCIETY COMMITTEE MEMBERS

<i>Chair</i>	Penny Griffiths	01837 83407
<i>Vice Chair</i>	Margaret Miller	01837 83398
<i>Hon. Treasurer</i>	Alan Mulcahy	01837 680145
<i>Hon. Secretary</i>	Philip Griffiths	01837 83407
<i>Committee Members:</i>	Alan Jacobs	Barbara Jenkins
	Royston Naylor	Godfrey Rhodes
	Rachel Goldsworthy	Sue Dally

Winkleigh Society membership is open to all Winkleigh parish residents, who are welcome to attend and vote at Society meetings. Further information about the Society and what is going on in Winkleigh can be accessed online at: <http://www.winkleighonline.com>

HEDGEROW PRINT, CREDITON, DEVON EX17 1ES: 01363 777595