

# DISTINCTLY WINKLEIGH



Working for Winkleigh



Edition 75

Autumn 2020

*Cover sponsored by  
Ian Shacklock, MTF Training, Moortown Farm, Winkleigh. 01837 83325*

---

**The Winkleigh Society Quarterly Journal**



Let us help you take the stress out of family or friends coming to visit. Clotworthy, a period Georgian house close to the village centre, offers 4\* Gold Award accommodation.

All rooms are large and with good views, and all have en suite facilities with free standing baths or showers.

Give us a ring for availability or send us an e-mail,

## **Clotworthy House Bed & Breakfast**

**Torrington Road, Winkleigh, Devon EX19 8HR**

**Telephone Susan or John Short: 01837 83709**

Email: [enquiries@clotworthyhouse.co.uk](mailto:enquiries@clotworthyhouse.co.uk)

Web: [www.clotworthyhouse.co.uk](http://www.clotworthyhouse.co.uk)



**Local Family Run Residential  
Sales & Lettings Agent**

**Call us for a FREE  
no-obligation Valuation of your Property.**

**01837 83393**

**[info@howesestates.co.uk](mailto:info@howesestates.co.uk)   [www.howesestates.co.uk](http://www.howesestates.co.uk)**

**Sell your property from 0% and no upfront fees\***

\*terms and conditions apply

## ***DISTINCTLY WINKLEIGH - PUBLICATION INFORMATION***

The Winkleigh Society publishes Distinctly Winkleigh quarterly at the end of February, May, August and November. Copies are distributed free of charge to all households and businesses in the Parish.

All Articles, etc. submitted for publication may be subject to editing, primarily for space or layout reasons. Please email your articles to [articles@distinctlywinkleigh.co.uk](mailto:articles@distinctlywinkleigh.co.uk), or deliver them to the Editor.

Advertisements from businesses in the local area should be emailed to [adverts@distinctlywinkleigh.co.uk](mailto:adverts@distinctlywinkleigh.co.uk), or delivered to the Editor.

**The deadline for articles and adverts is NOON on the second THURSDAY of each publication month (February, May, August and November).**

Please note that the views expressed in submitted material are not necessarily shared or endorsed by the newsletter team or The Winkleigh Society. Furthermore the Society does not recommend, or accept any responsibility for, any information, goods or services advertised in adverts or articles.

---

### **ADVERTISING RATES PER SINGLE EDITION:**

**Quarter-page: £12.50, Half-page: £25, Full page £50**

---

**EDITOR:** Godfrey Rhodes, Winkleigh EX19 8JP - Tel: 01837 682982

**PRINTERS:** HEDGEROW PRINT, CREDITON, EX17 1ES - Tel: 01363 777595

---

### ***WINKLEIGH SOCIETY COMMITTEE MEMBERS***

<i>Chair</i>	Penny Griffiths	01837 83407
<i>Vice Chair</i>	Margaret Miller	01837 83398
<i>Hon. Treasurer</i>	Alan Mulcahy	01837 680145
<i>Hon. Secretary</i>	Philip Griffiths	01837 83407
<i>Committee Members:</i>	Alan Jacobs	Barbara Jenkins
	Royston Naylor	Godfrey Rhodes
	Rachel Goldsworthy	Sue Dally

All residents of Winkleigh are members of The Winkleigh Society and are welcome to attend and vote at Society Meetings. Further information about the Society, as well as what is going on in Winkleigh, can be accessed online at:

***<https://winkleighonline.com>***

---



**<https://facebook.com/TWSDW/>**

## Winkleigh Society – Chair’s Report - August 2020



*Let us use your car whenever you can.*

*Places are for people and nature.*

*Cars detach us from places and unwittingly cause their  
destruction.*

*[Common Ground Rules for Local Distinctiveness]*

During Covid-19 many have been doing just that: walking locally and searching out the footpaths and trails across the landscape. It is a familiar theme in Distinctly Winkleigh and is echoed in Peter Howard's article, the tribute to Ben Hamilton-Baillie and Ian Ripper's article on the perils of cycling from Wheatland Farm to Winkleigh.

### **Footpaths:**

Pleased to report that the D.C.C. footpaths officer John Baker, in response to reports from Kim Melhuish and others from Muddy Shoes, has had two new signs put up for Footpaths 4 and 6 and has had obstructions cleared in Hollocombe Woods on Footpath 14. This is all part of the Parish Paths Partnership.

### **When did Distinctly Winkleigh begin?**

In the absence of a report on our planned, but cancelled, summer event for Winkleigh Fair, I have been looking through some early copies of DW to see how it has evolved over the years.

The first issue was published in Spring 2002 and was a four-page newsletter launching a Business Support Day to invigorate the local economy in the wake of the Foot and Mouth crisis; spearheaded by David Lausen, our then District Councillor.

Eighteen years later The Winkleigh Society had hoped to be planning for another such event this year as a follow-up to our latest printed update of the Information & Business Directory. This plan is now on hold due to Covid-19, but considering the enormous economic shock of our latest pandemic, it remains a priority.

Competitions for children, an impressive line-up of monthly music and drama events, the battle to keep The Community Centre, regular reports from the Parish Council, ACE Archaeology setting up House Scouts, as well as compiling a photographic and artefact archive in the Community Centre Kiosk. Also dog fouling, particularly in the

churchyard, is eloquently expounded upon by Sue Ware in edition 9. [Note that NDDC is currently conducting a public consultation on this perennial heated topic, including dogs on beaches, Tarka Trail cemeteries and play areas].

Distinctly Winkleigh was initially sponsored by a few individuals and local firms such as John Short, Acorn Vets, Londis, Parish Council and MTF Training.

Returning to the present, Distinctly Winkleigh is regularly 68 pages and is now entirely financed by dozens of local companies and businesses buying advertising space. (MTF Training still sponsors our cover for which we thank them). Alan Mulcahy, our treasurer, oversees the complex task of managing the advertising.

There are regular features from clubs and societies but we also strive to encourage new contributors, themes, art-work, photography and letters, as well as contributions from our younger readers. Connecting us all as a community is a key driver for the Committee of The Winkleigh Society.

This month at the first Saturday market in the Village Hall [post Covid-19] Rachel Goldsworthy, assisted by Godfrey Rhodes, our editor, manned a stall for Distinctly Winkleigh as part of our outreach.

As ever, thank you to our faithful 'posties' who keep the wheels turning on this home-grown machine!

*Penny Griffiths (Chair Winkleigh Society)*

## **Robinson Plant Ltd**

**[www.robinsonplant.co.uk](http://www.robinsonplant.co.uk)**

**A family firm with over 30 years experience**

**All aspects of earthworks, groundworks and hard landscaping  
undertaken including:**

**Site Excavation and Concreting**

**Foundations and Driveways**

**Sewers, Septic Tanks and Treatment Plants**

**Stone Walling and Paving**

**Land Drainage and Ponds & Lakes**

**Brick Work and Block Work**

**Office: 01837 89065      Mobile: 07909 998945**

**Email: [info@robinsonplant.co.uk](mailto:info@robinsonplant.co.uk)**

## Cutting the Ribbon at Pet, Home and Garden Supplies

Shirley and Stephen are back in business at the former D&S building on The Airfield. They have always been missed so all their old customers are delighted to see them back in their state-of-the-art refurbished and customised premises.

Stephen told us that they have stocked up on pet, home and garden supplies as requested by their customers. Opening Hours are Tuesday to Saturday: 9am – 4pm (closed Sun & Mon). Telephone (01837) 680084

With Jonesy's Cafe adjacent and already attracting a faithful following, Shirley and Stephen think the two enterprises will be mutually supportive.

A third business, East Devon Cars, is also located at the other end of the same building.



*Cutting the ribbon: Shirley and Stephen with their granddaughter Keira.*

## MTF CONTRACTING

A local experienced service for all your needs



- Agricultural Fencing
  - Garden Fencing
  - Flail Topping
  - Tree Pruning / Tree surgery
  - Wood chipping
  - Ground works / Landscaping
  - Fully Insured
- Free no obligation quotes



Call George  
Tel: 01837 83325 or M: 0777 207 8028  
Moortown Farm, Winkleigh, EX19 8HA  
**[www.mtfcontracting.co.uk](http://www.mtfcontracting.co.uk)**

**NEW TO WINKLEIGH SINCE LOCKDOWN ARE THREE BUSINESSES ON THE OLD D & S SITE:**

**"Jonesy's Café" run by Gareth**, offering good cooked food along with a takeaway service, outside catering and Hog Roast. Open every day except Mondays.

**Pet Home and Garden Supplies run by Shirley and Stephen**, offering everything for your pet along with household goods, garden accessories and compost. Open Tuesday to Saturday 9-4 pm closed Sunday and Monday (01837 680084).

**The third unit is East Devon Cars** offering motor vehicles for sale from 4x4 to Minis. Large stock selection both in showroom and on forecourt.  
Just ask for Kevin or Nick who will source you a motor if it's not already in stock.

**Pet, Home & Garden Supplies Unit 2B**

The Old Airfield, Winkleigh Now open Selling

Pet foods & Accessories, Cleaning and Household Goods, DIY

Garden Sundries and Compost. The original D & S Store

but on a smaller scale but run by Steve & Shirley once again

Open Tuesday-Saturday 9-4 but closed Sunday and Monday

Cafe Opening Hours Tel orders 01837 682618 [www.jonesys-catering.co.uk](http://www.jonesys-catering.co.uk)  
Tuesday-Saturday 7.30am-3pm Sundays 9.00am-1pm [ unit 1A]



Newly Re-Located Car sales showroom open daily 9am-4pm [unit3B]



## Hollocombe Community Group Update: May – July 2020

Hello again! So, what has been happening in Hollocombe recently?

**Hollocombe Hut:** Born out of an idea to have a permanent place for us to sell home grown produce and baking goods, Hollocombe Hut was designed and built by Wayne Reed and placed on the site of the old phone box. The opening ceremony took place on 17 May and many thanks to Jo's son Jac for the "Welcome" sign and Wayne's son Sam for the "Hollocombe Hut" sign. Fantastic!



Hollocombe Hut has become the focal point of the hamlet with residents contributing homemade goods, jams, marmalade, delicious baking, vegetables, plants, hand crafted mugs and art supplies. A special thanks to Glenn for his lovely free-range eggs and to Flic, Maddy and Lucas for their delicious homemade cakes and biscuits. We have also raised donations through our fundraising events for charities Devon Air Ambulance Trust and British Heart Foundation.

**Hollocombe Community Group:** The Facebook support group now has 59 members which must be nearly everyone who lives in Hollocombe! We continue to arrange activities for everyone to join in and they take place on a regular basis to keep everyone in good spirits and busy!

- Community Bingo – 2<sup>nd</sup> May saw the start of the virtual Saturday Bingo sessions organised by Wayne. A chance to catch up with friends, wonderful fun, and great prizes.
- VE Day – 8<sup>th</sup> May was well celebrated with everyone getting into the spirit and everything done to make the day special, from putting up bunting, Jeff and his family making a fabulous homemade aeroplane and Belle's cakes were pretty special too!



- Wellie painting competition – 6 June. A big thank you to everyone who took part and many congratulations to Flic for her exquisite floral wellies, Harry for the imaginative Minecraft design and Lucas for his colourful bright wellies. Thanks



also to Wayne for organising this event and to Helena for the kind donations of acrylic paints and brushes.

- The Great Hollocombe Bake off – 20<sup>th</sup> June was phenomenal! All the entries were superb and totally delicious. If only Paul Hollywood could have got here in time! So, we all tasted and voted joint 1<sup>st</sup> place to Angela and Jo for their delicious cherry and marzipan and carrot cakes.
- T-shirt painting competition – 28<sup>th</sup> June. Lovely designs by everyone. It was only when we proudly wore them that some of us realised we should have let the paint dry a bit longer!!



- Soft fruit picking recently was such fun and thanks to Glenn, Stella, and Wayne for organising!
- Beautiful photographs continue to be posted of nature and wildlife around the hamlet and here are just a few. So many beautiful wildflowers; otters and kites have been seen; glorious sunsets and a full pink moon.



- Finally I must mention Julie and the wonderful mobile library. They are back! No browsing but pre-ordering and an opportunity to meet friends and neighbours for a socially distanced catch up!

A personal thank you to Helena, Flic, Wayne, Caroline, Belle, Phillip, Jo, and Jeff for their photographs.

Stay safe and take care!

*Sue Dally (Hollocombe Resident)*

#### **INFORMATION DIRECTORY – Issue 6 – UPDATE:**

In Businesses, under new category of **Tiler**, add:  
Colm Fay, Hillside, Wembworthy EX18 7SB - Tel (01837) 83731

---

In Businesses, under Hand Car Wash, delete: telephone contact number

## All Saints' News

The first eight months of 2020 have certainly been a rollercoaster and the events which have unfolded we could never have expected when we saw the New Year in. The pandemic has been a time of challenge and hardship, isolation and loneliness for many but for others a time of memory making, acts of kindness and a greater sense of community. As the lockdown restrictions start to ease, we stand at the crossroads with the last few months stretching out behind us and the paths of the future ahead. As we stand and pause for a moment, we look back with sorrow and with thanksgiving. Sorrow for the loved ones whose funerals we were unable to attend, for missed family events, cancelled weddings and months of loneliness and fear. But there is thanksgiving as well. For the neighbours who have supported and cared for each other, for the huge amount of food donated to the Foodbank and for the wonders of telephone and technology which have enabled us to remain in contact with family and friends. We of course have a huge amount of thanksgiving and gratitude for key workers. Not just the medical staff but the local businesses, the refuse collectors, the postal workers and so many others who have provided for all that we have needed.

But what of the future? The future is uncertain, we don't know what will happen or what the 'new normal' will look like or for how long. The future for some means financial uncertainty, continued shielding until a vaccine or effective treatment is found, and for us all a new approach to the tasks of daily life. The future may seem scary but so does the idea of a global pandemic, yet we have emerged from the last few months and we will walk forward into the future. We do so together as a society and a community. The acts of care and kindness that have been seen in this community and in many others throughout the country give us hope. We will get through it, just as generations before us have coped with famine, disease and war.

It is a joy to be able to finally reopen All Saints for public worship and private prayer. We can once again bring before God our experiences of the last few months. We can offer our hopes and fears to God in our ancient building. In doing so we join our prayers with those who have endured much in this community before us, as our footsteps walk with theirs on the path to the church door. We come before God who is the same yesterday, today and forever, who is faithful through all the trials of this world and who offers us hope for all eternity.

A huge thank you to all who have helped and supported this community in the last few months and who will continue to do so. If anyone has lost a loved one or friend over the last few months, was unable to attend a funeral and would like a memorial service or prayers, please get in contact with me.

Details of All Saints services and opening times can be found on the church doors.

## Living Stones

The stones which surround us in the walls, buildings and memorials of the village, all tell a story. They tell the story of people, places and events both on a local and national scale. These are living stones, part of the past but also part of our lives now.

As we reflect on the last few months and look forward to the future, we invite you to contribute your living stone to be part of the story of this village. Find a small stone or pebble, paint it and decorate it or simply write on it. You might want to paint a rainbow, write the name of someone who has died recently whose funeral you were unable to attend, write a word - maybe 'thank you', 'hope', 'love', a phrase or just paint it a beautiful colour.

Anything which sums up the last few months: our community, our hopes and fears for the future. Bring it up to church and add to it to the living stones on either side of the West door of All Saints' church.

Please remember that the stones will be out in the best and worst of the Winkleigh weather – so if you can, a coat of varnish will protect it a bit more!

Help us to create a community piece of artwork which tells the story of this village at this time - hopefully we can find it a permanent home afterwards.

*Revd Helen Blaine - 01837 83710 - revhelenblaine@outlook.com*



# DOWN FARM

*Growing food, feeding the community*

Organic produce from our farm and local suppliers.  
Online farm shop OPEN weekly

**Friday - Tuesday** for orders on Thursdays.  
Order online or phone  
.....

**- VEG - VEG BOXES - SALAD - HERBS - FRUIT - MILK -  
- BREAD - BUTTER - EGGS - DRY GOODS -**  
.....

Contact farmers Olivia & Henry  
07739892488 | [www.down-farm.com](http://www.down-farm.com)  
[hello@down-farm.com](mailto:hello@down-farm.com)



## Perilous Pedalling

I set off yesterday from home at Wheatland Farm to cycle to the Post Office in Winkleigh - a mere 3kms. It's a nice start down the road, but as I get near Fiona's Farm Shop there is a 200m narrow gauntlet. I entered when clear but a large 4x4 came along in the opposite direction and instead of waiting, he (almost always a he) came on into the narrow section and left me with a choice of standing my ground or burrowing into the hedge. I had to stand and get him to back out. After that, plain sailing to the big bend with a slightly hairy bit round the corners between SW Fixings and the allotments (A3124) where there is no escape and it's hard to be visible to vehicles coming up from behind. When you reach the Sports Centre you get to cross over (which is fine for adults but quite dangerous for young cyclists) to the bike path on the pavement, and on in safety to the village. **A bike rack in the village would be nice, but not essential.**

**We had some visitors to our farm - a family of 4 with 2 young boys - who really got scared on the blind bends between SW Fixings and the allotments. They ended up pushing the boys up the bank into the hedge as they were so scared of the fast traffic and very limited visibility there. It is really not possible to go safely on foot into the village, which is a great shame.**

When our boys were at Winkleigh School we often cycled in but only using the tandem so we could manage the dangerous sections. Despite being competent cyclists with Bikeability 1, 2 and 3 training, we never considered it safe for them to cycle on their own - the risk is just too high - which really curtails their ability to socialise as it requires parental escort: **such a shame.**

**We would so welcome ANY improvements that could be made to the local road layouts to make it safe to get about without the car. It feels very much that pedestrians and cyclists are considered a nuisance by a majority of drivers.**

It's a notable treat when polite drivers give us the same courtesy that most drivers afford to other vehicles.

*Ian Ripper*

## RAY SQUIRE CONTRACTING WINKLEIGH

Hay-making, Grass mowing, Turning, Rowing up,  
Small bale baling & Topping, Hedge Trimming

**Give us call on – 07912316679**

## Our Devon County Councillor Writes ....



Once again I would like to start this article by thanking everyone in Winkleigh and the surrounding communities for the part you are all playing to help beat the coronavirus. July has seen the most significant easing of lockdown restrictions yet with the re-opening of more shops, facilities and businesses and I pay tribute to all those who have worked so hard to re-open safely in this difficult climate.

It would be an understatement to say that it has been an extremely difficult and challenging four months, but thanks to our collective efforts in Winkleigh and across Devon, the County is ranked 149 out of 150 'upper tier' Local Authorities in England as having the lowest numbers of recorded coronavirus infections in the country. Only North East Lincolnshire has had fewer compared with Devon.

More significantly, while I know people have been concerned that the increase of visitors to our area could cause a second spike or 'wave' of infections, at the time of writing (31<sup>st</sup> July) we have seen no evidence at all of any local spikes or second waves of infections. The Director of Public Health in Devon has gone on the record to say none of the recorded cases in Devon since the start of July could be traced to tourists or visitors to the region.

Nevertheless, we must not get complacent so to keep these infection numbers down it is vital we keep up our collective efforts to defeat the virus. **Please continue to follow social distancing and keep washing your hands regularly. Wear a facemask or face covering but continue to social distance and hand wash. Follow the regulations and guidance and stay alert. If we continue to do this, then the virus will be controlled, and our infection rates will remain very low.**

This in turn means that if we keep our infection rates low, we remain in a good position to deal swiftly and effectively with any local outbreaks.

The County Council has now launched its 'Local Outbreak Management Plan' which will place the Council at the forefront of containing any local outbreaks. DCC will work with the national 'Track and Trace' service to identify the contacts of any positive cases and will use the data gathered to take whatever steps needed to help contain the virus. Reports from the Director of Public Health indicate that 'Track and Trace' is working well in

Devon, with 80% of contacts being identified and self-isolating. DCC has an excellent relationship with Public Health England and has been receiving high quality and up-to-date data throughout the pandemic.

An 'outbreak' will generally be defined as two or more cases in separate households recorded in a community. Obviously the circumstances will vary in each scenario but a range of actions can be taken from tracking and tracing, isolating work places, deploying more community/mobile testing and so on to ensure that any local outbreak is contained effectively without the need to enforce a local lockdown as we've seen in Leicester.

By way of comparison, Leicester was recording over 80 new cases a day before their local lockdown. In Devon we are generally seeing 0-5 new cases a day, and those are spread throughout the County. You have to go back to May 28<sup>th</sup> for the last time the County recorded a double digit increase of infections, which was 12 new cases. Long may these local trends continue.

Finally, our local and county-wide hospital capacity remains good, and with 120 additional beds becoming available in the Nightingale Hospital, Devon and the South West overall should be well prepared if the worst does happen. On more local matters, the easing of the lockdown has seen me dealing with more traditional County Council matters in Winkleigh over July which, unsurprisingly, relate to Highways and Traffic!



**SAM'S CIDER**  
THE PROPER DEVON CIDER

Celebrating  
100 years  
of cider being  
made on site

Makers of award-winning proper Devon cider

[www.winkleighcider.co.uk](http://www.winkleighcider.co.uk) info@winkleighcider.co.uk Follow us on Facebook & Twitter

You can visit us at Winkleigh Cider Company, Western Barn, Hatherleigh Road, Winkleigh, Devon. EX19 6AP  
Onsite gift shop and local produce

I know many residents are concerned about the impact any future developments will have on local infrastructure, and that traffic and road safety remains a concern particularly after the recent serious accident on the A3124.

I also know traffic issues in Winkleigh have been looked at many times in the past and have not always appeared to have been resolved. While I cannot promise immediate change overnight, at the July Parish Council meeting I asked the Parish Council to identify specific issues and to come up with some recommendations and proposals which I will then take to the County Council Officers to discuss and progress further. I am keeping an open mind and I would be more than happy to hear representations from residents, and I would encourage *Distinctly Winkleigh* readers to also get in touch with the Parish Council to let them hear your views as well.

I hope that we will all have a restful and calm summer despite the pandemic, and I hope this article has provided some reassurance about our local situation with the coronavirus. While we must remain vigilant and alert, I am hopeful we will be able to enjoy a safe and healthy summer. Stay safe, and as ever if there are any County Council issues you would like to raise with me please don't hesitate to get in touch.

Andrew Saywell -07886 446560 -[andrew.saywell@devon.gov.uk](mailto:andrew.saywell@devon.gov.uk)



## CHULMLEIGH COLLEGE

**Do you have a child in Year 5?**  
**Thinking of Chulmleigh for secondary school in 2021?**  
Why not 'Like' our Facebook page to get an insight in to College life,  
& updates on open events & taster days later in the year.

**Why choose Chulmleigh?**  
**2019 GCSE Results:** Best in the region for the 5th year.  
First or second in Devon (non-selective schools) across the  
key measures of school performance.  
**School Life:** Pupils benefit from excellent extra-curricular  
opportunities in outdoor education, music, drama,  
sport and cadet corps.



[www.chulmleigh.devon.sch.uk](http://www.chulmleigh.devon.sch.uk) 01769 580215  @ChulmleighAT  
[admin@chulmleigh.devon.sch.uk](mailto:admin@chulmleigh.devon.sch.uk)  @ChulmleighCollege

## WPC COVID Help Service Step-Down - 1<sup>st</sup> September

The Parish Council intends to step down voluntary support to the parish from 1<sup>st</sup> September; we will reopen the service if we see another wave or a local spike in cases.

A detailed action plan is available on the Parish Council website, or on request from the Parish Clerk, with details of how the Parish Council will securely store personal details, how you can request these details to be deleted immediately and how the service will recommence if appropriate.

May I take this opportunity to thank all the volunteers some of whom have been doing tasks to help others on at least a weekly basis and who have supported me as coordinator. This has been five months of hard work and putting yourselves out for others. I would also like to thank those who have used the service, for being patient and appreciative. Requests have been made in a timely fashion and have largely been appropriate and have taken into consideration the needs and safety of the volunteers. I would also like to thank Mel, Clerk to the Council, for her support.

At the time of writing the 'lockdown' is easing and those who have had to self-isolate are being told they can begin to be out and about in the community from 1<sup>st</sup> August.

### WHAT THIS MEANS FOR THE WINKLEIGH SUPPORT SERVICE

The service is already easing off as people return to work and lock-down restrictions reduce. However it may take people who have been self-shielding and who have not left their homes since March some time to rebuild confidence and start being out and about in the community; therefore **the service will continue until the 31<sup>st</sup> August** for those who need it. This will give people a month after the easing of restrictions to build up confidence and/or make their own arrangements for shopping, prescription collection, etc.

**My thanks once again to the many volunteers and helpers, our local businesses and of course to all key workers and carers. I hope we will all be saved from further threat of disease.**

**Keep safe, be careful, and keep cheerful.**

*Angela Findlay*

*(Vice-Chair Winkleigh Parish Council & Coordinator of Winkleigh Support Service)*

1. <https://www.devon.gov.uk/coronavirus-advice-in-devon/>
2. Citizen's Advice Bureau (CAB): [www.cabdevon.org.uk](http://www.cabdevon.org.uk)
3. [www.ageuk.org.uk/Devon](http://www.ageuk.org.uk/Devon)
4. Children's Social Care:  
[www.devon.gov.uk/helpcontactus/localoffices/children's-social-care/](http://www.devon.gov.uk/helpcontactus/localoffices/children's-social-care/)  
0345 155 1078
5. Adult Services: [www.devonservices.org.uk/service/care-direct-devon](http://www.devonservices.org.uk/service/care-direct-devon)  
0345 155 1007

**Devon Voluntary Action (DeVA) Directory**



## Neighbourhood Plan ..... Almost there

You will have seen from the Parish Council update that the Winkleigh Parish Neighbourhood Plan has passed a significant hurdle on its way to becoming a statutory planning document for the Parish. Winkleigh is one of the first Parishes in Torridge to have come so far along the Neighbourhood Planning road. As part of the process the Plan has to be 'Examined' by an independent Government examiner, to check it conforms to all the legislation, national and local guidance. The Plan has passed with flying colours, and only minor amendments have been suggested.

The very last piece of work to get the Plan in place is a Parish referendum to endorse the document. The Covid-19 pandemic has meant no referendums are planned until May 2021 at the earliest. While this is disappointing, there is some good news. Once the Plan has been approved by Torridge to go forward to referendum (probably at a Committee in October) the policies in it can be used to determine planning applications and influence decisions affecting the Parish.

We are in times of change, with the Government announcing consultation about reform of the planning system. There is little indication of how this will affect Neighbourhood Plans, but, changes will require legislation and updated guidance, and are unlikely to be in place speedily. The first tranche of work is likely to fall on the District Council, with the requirement to identify land for development, renewal and protection. There is plenty of time for the Neighbourhood Plan to be an effective instrument for managing change while reforms are put in place.

So very shortly we will be able to use the Neighbourhood Plan policies to help shape the future of the Parish, promote change that benefits the community and inform responses to planning applications.

All the documents relating to the Plan can be found on the Parish Council web site, including the Examiner's Report and Recommendations.

*Pauline Warner*



**When you need  
advice we have  
the solution**

**Call our Crediton office  
01363 77 55 66**

Manor Office, North Street, Crediton EX17 2BR

Other offices at Exeter, Okehampton,  
Budleigh Salterton, Ottery St Mary and Sidmouth.

Visit [gilbertstephens.co.uk](http://gilbertstephens.co.uk) for more information

Gilbert Stephens LLP is authorised and regulated by the Solicitors Regulation Authority (no: 536070)

## Winkleigh Landscape for the Covid-19 era

Nineteen years ago, in 2001, much of the countryside, especially here in north Devon, and also in Cumbria, was 'locked down' due to foot and mouth and tourism took a huge hit. Many businesses were killed but at least government, both local and national, realised just how important was access to our countryside. If they could not go for a walk or bike ride when they got to their destination, why go at all?

Occasionally governments forget to carry out their good intentions, and the situation in 2020 for access is no better. During the lockdown I am sure I was not alone in sparing a thought for those locked in a big city flat, without access to a garden, a park or a footpath. For those like me, engaged in a concern for landscape throughout the country, Covid-19 has exposed all our failings. Our National Parks, designated for the use of the whole nation, have been virtually closed off by a combination of no parking, no public transport and the united hostility of the 'new locals', a wealthy and powerful group. Locals have been horrified at 'upcountry folk' daring to want to get to the coast. In the cities, parks have been locked quoting staffing and insurance problems. When they try to visit the ordinary countryside, like Winkleigh, they may not find hostility, but they find very few footpaths, and these can only be accessed via lanes with speeding traffic. Even cycling is dangerous.

Nevertheless, the post Covid-19 world offers opportunities as well as threats, and especially for this area. Already estate agents are very busy as so many city folk

*Jenny Rock*

**Rock Solid Book-keeping Solutions**  
*Creating order from Chaos!*

Collacott Lodge,  
Winkleigh,  
Devon EX19 8LE

Mobile: 07743 683 756

Email: [rocksolidbookkeeping18@gmail.com](mailto:rocksolidbookkeeping18@gmail.com)

Book-keeping, Bank reconciliations, Creditor & Debtor Reports.  
VAT Returns, Accounts to Trial Balance, Liaise with Accountants.

Temporary, 'One-Off' and Permanent Contracts undertaken.

Friendly, helpful advice for small businesses.

Accounting experience in:

Farming, Manufacturing, Pub, Convenience Store and Retirement Homes

CIMA Advanced Diploma in Management Accounting.

Association of Accounting Technicians NVQ IV.

discover that, if they can work from home, then they can move to the country. Our house prices will rise .... though whether you think that good or bad rather depends on your position. That new population will often be full-time residents of working age, which is surely better for the community than second-home owners. Many of those second-homes though, do double as holiday apartments.

Already we see a rise in the number of visitors. This may be simply a result of the loss of foreign travel combined with a caution about going to the coast or more crowded areas, and it may evaporate next year. How do we encourage people to return? Do we want them to? What is our unique selling proposition? **We need a village conversation to consider this, and perhaps the pages of DW are the place to have that.**

*[Editor's Note: If you want to start such a conversation, please contact DW]*

What do visitors want of us? Certainly they need places to eat and drink. They need public loos. They would like interesting visits, such as open farms, cider works, craft workers, but not necessarily an organised 'Visitor Experience'. They want to be able to go for a country walk or bike ride, not get in a car and drive to try and find somewhere to park before the footpath. I would suggest that Winkleigh's contribution to the next lockdown, and for our own profit, might be to open our countryside as much as possible, especially riversides, and with circular walks where both visitors and locals can wander with the children in reasonable safety, which our local lanes do not currently provide. How do we do that?

*Peter Howard*



**Southwest  
Fixings Ltd**

**Agricultural & Building Supplies Trade Counter**

**Tel: 01837 83492**

**Email: [sales@southwestfixings.co.uk](mailto:sales@southwestfixings.co.uk)**

- |                   |                                  |                     |
|-------------------|----------------------------------|---------------------|
| • Fencing         | • Nuts and Bolts                 | • Plumbing          |
| • Timber          | • Hydraulic Hoses                | • Tools             |
| • Oils and Adblue | • Boots/workwear                 | • Fixings           |
| • Calor Gas       | • Tractor and<br>Implement Parts | • Fasteners         |
| • Animal Health   | • Drainage                       | • ...and lots more! |
| • Batteries       | • Guttering                      |                     |
| • Pet food        |                                  |                     |

**Delivery available!**

## My First Lockdown

I suppose it was inevitable that this current lockdown should call to mind the first time I was socially isolated. It was a long time ago, I was a nineteen year old second year student nurse and I became unwell. After a week of investigations in the hospital staff sick-bay a diagnosis was made; I had typhoid fever and was immediately packed off by ambulance, the paramedics all wearing PPE, to the local isolation hospital.

My accommodation was a glass-sided cubicle with a door onto a balcony open to the elements. On my arrival the two sides of the cubicle were screened off so I couldn't see or be seen by patients either side of me. These screens remained in place for several weeks although my awareness of time passing was at best hazy. The nursing staff wore gowns and gloves whenever they came into my cubicle, their hand washing was performed before entering and on leaving at the sinks on the balcony. It must have been very unpleasant during any wet or very cold weather. I was there during spring and summer so the door was open almost all the time.

I was not able to have any visitors other than my mother who came a couple of times each week and had to sit just outside the door and converse from there; throwing any offerings, usually paperback books onto the bed from where she sat. My nursing friends had been instructed not to visit for fear of infection. Initially, while my fever was high I was mostly unaware of anyone coming or going. One person who did come and sit by the bed was an investigator from the Public Health Department. It was his task to ascertain the source of the infection. However, he came to question me during a period of quiet delirium which was unfortunate for him. The hospital was fairly close to the local airport and there were frequent aircraft noises, these combined with my predilection for war films convinced me I that was a prisoner and the investigator was probably a Nazi, so I, being both brave and noble, wasn't going



**01837 83229**

## Electrical Contractors

- Rewires, New Builds, Extensions
- Consumer Unit Upgrades
- Showers, Cookers, Heating
- Internal / External Lighting
- Sockets & Telephone points
- CCTV & Networking
- Testing & Inspection (inc PAT Testing)




to give anything away. Had he returned when the fever had abated he could perhaps have learned something useful, but he didn't.

The fever did abate with the help of powerful antibiotics though it did subsequently return for two periods of relapse. Eventually I was isolated for just over four months. The pre-discharge testing to check the infection had gone was a lengthy process requiring six consecutive negative tests. The tests were carried out twice a week so the process took three weeks to complete. It was frustrating to have five negatives followed by a positive test. This happened twice so required an extra five weeks before I could eventually go home.

I was admitted to the isolation hospital at the end of May. My sister was to be married on the 11<sup>th</sup> August. I was to be her bridesmaid. It seemed inconceivable that I should not be better in that time. My dress was ordered and fitted. I didn't make it. On the morning of the wedding I was again feverish. My only garment was a short, cotton, open-backed gown, no shoes or even slippers and certainly no underwear or coat. I had planned to escape, to catch a bus, or more likely two or three buses and slip into the back of the church where no one would notice me. In the event I cried all morning, then by noon I knew it was too late to try to get there. It would have been impossible, it was a crazy idea, but I was somewhat crazy. Later that day my mother came with Teresa's beautiful bouquet which she had sent for me. I learned too that my cousin had looked very lovely in my bridesmaid's dress!

*Sylvia Smith*

**Open Book** Construction &  
Developments Ltd

**General Building Works**  
**Period & Listed Building Renovations**  
**Maintenance & Repairs**

**For a free, no obligation estimate, please call:**  
**01837 83890 • 07541 002017**  
**info@obcd.co.uk    www.obcd.co.uk**

## Winkleigh Parish Council Update

The members of the Parish Council express their thanks to Angela Findlay, our Vice-Chair for co-ordinating the volunteer response during Covid-19. We extend our thanks to all of the volunteers who have been invaluable and the essential workers, businesses and their staff who have faced adversity and carried on.

**Disabled Parking Bay Winkleigh Square:** The Council would like parishioner views on the requirement and location for the possible installation of a single advisory disabled parking bay (non-enforceable) which must not block access within the Square. The Council must consider other implications such as the consequence of the reduction in residential parking in the Square and non-enforcement of any bay.

**Parish Traffic Calming:** Members of the Council have formed a 'Traffic Response Team' to look at traffic calming and speed reduction throughout the main areas of concern in the Parish. **If you would like to be a non-councillor member of this team, please contact the Clerk. The team will be working over the summer to prepare a report of viable options to take forward to DCC Highways.**

**Neighbourhood Plan:** The external examiner has almost finished his assessment, and we have received incredibly positive comments. The next step would be to go to referendum, however, due to Covid-19 emergency legislation, this cannot be done until May 2021. **However, the Government have introduced further legislation to**

**the effect that once the Neighbourhood Plan is ready to go to referendum, it will become a material planning consideration and statutory planning document, which is very good news, and will therefore carry weight for all future planning developments in the parish.**

The Council thanks the members of the Neighbourhood Plan team for the invaluable work and free time they have given to the development of this plan for the benefit of the parish.

**Parish Council Vacancies:** The Council currently has one vacancy due to vacation of office and three vacancies that can be filled immediately by co-option. **If you are a registered elector or have lived/worked in the Parish for at**

**Need Help In The Garden?**

RHS Qualified, Experienced Gardener

All Aspects of Garden Maintenance

Planting Ideas

Year Round Reliable Service

Call Maxine on 01837 680039 or 07815 309023



**least 12 months and would like to join the Parish Council, please contact the Clerk for more information.** Full training and support will be provided.

**Parish Council Working Groups:** Members of the Parish Council are responsible for carrying out asset inspections (benches, bins, bus stops, etc.) and Cemetery inspections, as well as keeping the parish tidy. **If you would like to become a non-councillor member of any of these working groups or would like any more information, please contact the Clerk.**

**Footpaths in the Parish:** The Parish Council has an agreement with the Public Rights of Way Officer (Called a P3 Agreement) to carry out small maintenance on the footpaths within our parish and carry out annual inspections. This is only on the sections of footpaths that fall within our parish. We can obtain a small grant each year for training, purchasing of equipment, and maintenance of the footpaths. If you would be interested in being involved in the maintenance and/or would be interested in inspecting any of the footpaths against the required criteria, please contact the clerk.

**Life on the Verge:** The Council would like to hear your views regarding the cutting of minimal visibility splays only at junctions in the parish by our own contractor (not covered by the DCC grass-cutting regime) and for the sowing of wild flowers with effect from 2021.

**Defibrillator Awareness Session:** The Council is providing a free defibrillator training/refresher session in the Village Hall on Saturday 19<sup>th</sup> September 10 am-12 noon. However, due to the Covid-19 restrictions, the event may be cancelled unless there is demand from parishioners. If you would be interested in attending this session, please let the Clerk know by 3<sup>rd</sup> September.

**Regeneration and development of businesses on the Airfield:** The Council are liaising with TDC and DCC with regard to forming a **Devon Work Hub**, which looks to support the development of drop-in, shared workspaces to support those people who are working from home.

**Keep informed:** The Parish Council have an email contact group. If you would like to receive emails from the parish council regarding our meetings, planning applications, road works, Covid-19, and other formal correspondence that affects the parish, please contact the Clerk. You can unsubscribe at any time and your details will not be shared with any third parties.

Our next meeting is on Wednesday 23<sup>rd</sup> September 2020, 7.30 pm, venue and format to be confirmed subject to Covid-19 restrictions at the time.

*Melanie Bickell, Clerk to Winkleigh Parish Council*  
*winkleighpc1@btconnect.com - 01837 89095*

## Ben Hamilton-Baillie 1955-2019

Ben Hamilton-Baillie, who has died of cancer aged 63, was an architect whose pioneering work in traffic re-design sought to reduce the impact of traffic in towns and villages. **He became the UK's most influential and innovative voice promoting the idea of shared space.**

He came to Winkleigh, at the invitation of the Parish Council, in 2018 as part of their *Neighbourhood Plan* preparations and presented his findings on tackling traffic and safety concerns through place-making and lower speeds, in a public meeting.

The key question he posed was:

### IS THE HIGHWAY TELLING THE STORY OR THE VILLAGE?

He observed that there was a stark contrast from the enclosed intimacy of the Square and its environs, where traffic and human interaction coexist, and the harsh, unforgiving, isolating surrounding roads that hem in the central village core. There are also surprisingly few opportunities for cycling or pedestrian routes into the surrounding countryside.

The entry points tell the story of the Highway. It is possible to drive through Winkleigh either along the A3124 or through Torrington Road/Townsend Hill and be almost unaware of the village. Winkleigh turns inward on itself, creating a higher-speed world around the edges and severing connections with the human action and vitality of the village: widening roads, centre-lines, one-way systems and bossy signage all encourage speed.

### HIS SOLUTION/SUGGESTION:

Take the centre-lines away, narrow the roads, create uncertainty and flag up the public realm by art and civic markers and prioritising pedestrians. You cannot take the traffic away: you tame it by flagging up that this is a village community and an unpredictable space. He famously lay down in the middle of the road by Mid Devon Motors to make his point.

### **COVERING ALL EXCAVATIONS AND GROUNDWORKS BOTH LARGE AND SMALL PROJECTS AT COMPETITIVE PRICES**



**FULLY INSURED  
HEDGE-TRIMMING FLAIL &  
CIRCULAR SAW  
FIREWOOD PROCESSING  
CALL MARTIN ON 07817464420  
EMAIL: [PARISH@BTINTERNET.COM](mailto:PARISH@BTINTERNET.COM)  
[WWW.MPCONTRACTS.CO.UK](http://WWW.MPCONTRACTS.CO.UK)  
FACEBOOK: MARTIN PARISH  
CONTRACTING**



He particularly remarked on the isolation of the Sports Centre and Cemetery which requires recognition as a critical crossing point for pedestrians and cyclists to bring it into the public realm.

**In his conclusion Ben stated: “Winkleigh is helping plan its future at a time of diminishing resources and confidence amongst planning and highway authorities. Although their engagement remains essential, small scale initiatives based on local creativity and knowledge are likely to be more effective in reversing the loss of public space to traffic”.**

Ben showed us many examples both in the UK and Europe where designing in ambiguity, intrigue and uncertainty radically alters the behaviour of drivers: ranging from scarecrows to ducks in the road and creating play streets. Inspired by this, The Winkleigh Society sponsored ‘Winkleigh Through My Eyes’ a children’s street art competition and followed it up with The scarecrow Trail for last year’s Winkleigh Fair.

The Parish Council is currently looking into Gateway Signage.

Printed copies of Ben’s report are available in The Community Centre and electronically by request from the Parish Clerk. Already unwell when he visited and presented his findings and observations at a public meeting in The Village Hall, we were very sad to learn of his death.

His presentations and lectures are available on line and are well worth a look.

*Penny Griffiths Chair Winkleigh Society*

 <p><b>THE SHIFTERS</b> <b>Spirebourne Limited</b> Liquid Waste Disposal and Drainage Co.</p> <p><b>EMERGENCY CALL OUTS</b></p> <ul style="list-style-type: none"><li>Septic Tank/Cess Pool Emptying – Any Size</li><li>Grease Traps</li><li>Drain Blockage Clearance</li><li>Various Commercial Liquid Waste Disposal</li><li>Servicing</li><li>CCTV Drainage Surveys</li><li>Pump Repairs &amp; Renewals</li><li>Installation of Septic Tanks &amp; Sewage Treatment Works</li><li>Mantair Units</li></ul> <p><b>FREEPHONE 08000 855 185</b></p> <p>spirebourne@hotmail.co.uk www.spirebourne.co.uk</p>	<p><b>S L PASSMORE.</b> <b>PLASTERING</b> <b>CONTRACTOR.</b></p>  <p>ALL TYPES OF INDOOR PLASTERING AND PLASTERBOARDING AND DAMPROOFING</p> <p><b>20 YEARS EXPERIENCE....</b> <b>CALL STEVE ON 07584284256</b> <b>EMAIL: slpassmore23@gmail.com</b></p>  <p><b>FIND US ON</b> <b>FACEBOOK, SLPASSMORE.</b></p>
--	---

## Photo Competition for Winkleigh Fair

The idea for a Photo Competition as a community event for Winkleigh Fair started with Sharon Jeens and its theme was 'Sign of the Times'. Initial responses were slow as many people were shielding at home and did not see the posters, but publicity on Winkleigh Facebook pages soon resulted in a flurry of entries, with 35 in all. The Judges, 'Stone' Naylor, Alan Jacobs and Greg Goldsworthy, had the difficult task of choosing six winners, with another four chosen as highly commended.

The Winners, each received a box of Celebration Chocolates, with the first three also receiving a copy of Stone's Glastonbury Festival photobook 'Stonefree', were:

- |                 |                        |  |
|-----------------|------------------------|--|
| 1 <sup>st</sup> | <b>Sue Taylor</b>      | Landscape with a rainbow over her beautiful garden on Townsend Hill ( <i>Featured on the Front Cover</i> ) |
| 2 <sup>nd</sup> | <b>Tom Radcliffe</b>   | Dog looking through the frosted glass of the dog-flap  |
| 3 <sup>rd</sup> | <b>Zoe Dart</b>        | Enigmatically de-focused ground level portrait of her younger brother                                      |
| 4 <sup>th</sup> | <b>Blake Wonnacott</b> | Close-up of a Blue Tit looking out of a nesting box  |
| 5 <sup>th</sup> | <b>Paul Baker</b>      | Humorous socially-distanced doorstep picnic with Deanne Whittaker using an extension grabber               |
| 6 <sup>th</sup> | <b>Sam Westwood</b>    | Still life with football boots, boxing gloves and strawberry plant   |

Highly commended were: **Hope Baker, Leanne Wonnacott, Sue Keys, and Sharon Jeens.**

The photos for the five winners are shown on the following page.

Due to the popularity of the competition I'm keen to run another one soon, perhaps with a view to making it a regular event to coincide with the quarterly issues of DW? I'm already wondering whether this could be the humble beginnings of a Winkleigh Photography Club – is anyone interested?

My thanks go to Sarah Goody of Winkleigh Fair for the boxes of chocolates, Sharon for cajoling me into organising the competition, my fellow judges Alan and Greg, and finally to everyone who joined in and entered.

*Stone Naylor*



2<sup>nd</sup> Tom Radcliffe



3<sup>rd</sup> Zoe Dart



4<sup>th</sup> Blake Wonnacott

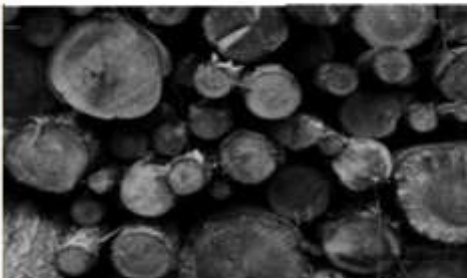


5<sup>th</sup> Paul Baker



6<sup>th</sup> Sam Westwood

## Local Logs



Dry seasoned hardwood

All stored under cover & delivered in  
Chulmleigh & surrounding area.

Truck Load	£90
Double Load	£180
Trailer Load	£280
Net of Logs	£5
Net of Kindling	£5

Martin 07817 464420 parish@btinternet.com  
www.mpccontracts.co.uk



**Children's Hospice South West (CHSW)** is inviting people to remember and celebrate the life of a loved one and raise vital funds for the charity.

A **Memories by Moonlight** ceremony will be broadcast live on Facebook from the Little Harbour Children's Hospice in St Austell at 9 pm on Saturday, September 26<sup>th</sup>, giving people the opportunity to light a candle and come together virtually for a special evening of reflection.

The poignant and uplifting ceremony will feature readings from all three of the charity's children's hospices – Little Harbour, Little Bridge House near Barnstaple and Charlton Farm near Bristol. It will also include music, poems and a two-minute applause to celebrate the lives of those no longer with us. The names of loved ones will also appear along the bottom of the screen.

Everyone who registers to take part in the event, which is being sponsored by National Friendly, will get the chance to join the virtual memory ceremony. People can then choose to simply donate in memory of their loved one, or complete a walk or activity at a time and location that suits them and ask friends and family to make a donation towards this.

Participants will receive a beautiful memory pack in the post, which will include a candle bag to decorate, along with a tea light to light on the evening and a booklet to accompany the memory ceremony.

To sign up to Memories by Moonlight simply visit **[www.chsw.org.uk/moonlight](http://www.chsw.org.uk/moonlight)**.

Registration is just £10 and a memory pack, along with details of how to access the Memory Ceremony, will be sent in the post. For more information about the event, you can also call the CHSW Fundraising Team on 01726 871800

## Recreating The Past for Channel 4's New Offices: The Sculpture School – Press Release



Credit - Duncan Lomax

Andrew Sinclair MRSS SWAc has recently completed a sculpture commission of two nine-foot female figures to adorn the façade of the Majestic Building in Leeds City Centre. As a nod to the building's past, and also to its future as the home of Channel 4's offices, the two figures of 'Music & Poetry' each represent the creative arts of music and literature.

Andrew was approached to help with the restoration of the Majestic, one of the city's most iconic and historic buildings. The Majestic has over-looked Leeds City

Square for nearly a hundred years. Now, as part of its redevelopment into 66,000 square feet of future-focused, office accommodation across seven floors, the architects were conscious their design decisions should be sympathetic to the building's past. This included the commissioning of the new statues to adorn its façade.

Speaking on behalf of the commissioning firm, Rushbond Real Estate, Manager Mark Finch stated: *"Since commencing works, we have been determined to deliver a sympathetic, comprehensive restoration programme which respects and pays homage to the Majestic's rich history. Andrew has done an amazing job, displaying true craftsmanship and bringing an exciting set of additions to the building."*

Created in Andrew's workshop in the heart of Devon, the figures eventually made the 300-mile journey to their new home laid on the back of a flat-bed lorry, before being winched into place via crane. The whole project from concept to delivery to installation was seamless. Andrew commented, *"This was an interesting and significant brief for us, and we're delighted with the result. The Majestic is one of the most exciting projects happening in Leeds at the minute, so it was a real privilege to be involved."*

As part of this landmark building, Music & Poetry will stand as a symbol of Leeds' passionate support of culture and the arts, overlooking City Square for many years to come, and stitching together the city's past and future.

Ingrid Oram - 01837 82879 - [info@thesculptureschool.co.uk](mailto:info@thesculptureschool.co.uk)

## **Business News - Winkleigh's own Super-Heroes & Moving Forward**

In the last Edition of Distinctly Winkleigh, among other acknowledgements, tribute was paid by Winkleigh Parish Council to those businesses who were selflessly dedicating time and effort to provide facilities and support to local residents.

Those businesses in turn have asked DW to return thanks to WPC and to acknowledge the part that the Parish Council has played in moving swiftly and efficiently to support particular needy people who were in desperate circumstances, physically, emotionally and financially.



On 15<sup>th</sup> March, the week before lockdown, the Mad Butcher's Tom Robinson posted on the Winkleigh! Facebook page, that although not qualified as a carer, he would personally undertake to do everything he possibly could to ensure that the self-isolating, vulnerable and elderly of Winkleigh would have deliveries of all their necessary essentials, and in co-operation with Ben Kitchen of Londis, put forward a request for help to organise how these deliveries could be done. On 19<sup>th</sup> March there was a meeting with the Parish Council, local businesses, volunteers and Community-minded residents on how they would co-ordinate just such a service as Tom had proposed.



From that day to this, both the Mad Butchers and Londis have taken orders by phone, email and on social media and consistently and as speedily as physically possible, have fulfilled a relentless stream of deliveries over the last 5 months, cheerfully and willingly and at no extra charge for fuel or the incredible additional hours they are having to work. Forget minimum wage!!! Their exhausting workload, which has been undertaken by all

their wonderful staff plus extras, has been equal to the run up to Christmas, - but this time with no respite or holiday and for the last 5 months they have been working flat out, sometimes against almost impossible odds, in order to keep the village sustained with essentials.

The Mad Butchers have told me that as usual, market prices have fluctuated during this time, but their price structure has remained the same as it was last year, with NO percentage increase. Their day begins at silly o'clock in the morning, and finishes when the last deliveries are done, and then no rest, because they need to do the

ordering, paperwork, accounts and admin. In addition, Tom has described his father as ‘a machine’ who simply doesn’t stop until everything is done. Indeed, when Miles’ Fish and Chip van came back on Thursdays to the Square in April, Barry added to his superhuman workload to deliver Fish and Chips to the local elderly, self-isolating and vulnerable people of Winkleigh.

Delivery co-ordination continues with the hard-working Londis team and Butchers working together, the shop items mainly being co-ordinated by Red, Naomi Strong and particularly Ben, to whom we offer Congratulations on the birth of his daughter Skye on the 17<sup>th</sup> May, whom sadly he has not seen as she is abroad and he is unable as yet to get to see her.



There are many businesses and tradespeople who have managed to keep Winkleigh sustained throughout lockdown, stalwarts such as South West Fixings, OpenBook, John Short, Twixtmoors and Howes Estates/Pure Lettings, Cleaners, Window Cleaners, Electricians and Plumbers, Roofers and Thatchers, Postmen and Women and Refuse Collectors, Delivery Services, Bus-drivers, Teachers of key workers’ children and of course all medical and NHS staff. Not forgetting Sam’s Cider!! I’m sorry I have not been able to acknowledge all the others in this article.

Fiona’s Farm Fayre has provided a collection point and take-away service for their produce, fresh vegetables and fruit, breads and cakes, dairy and fish. In addition, Oasis, cooked on Fiona’s premises, still continues to provide hot meals delivered to people’s homes on Wednesdays and Saturdays, and the café and shop is now open under strict guidelines.

The Kings Arms provided some lockdown special takeaways and also Veg. boxes up until the end of the first week in June and Down Farm continued producing Veg. boxes via the Mad Butcher or for collection. Uncle and Ozzy’s have provided deliveries and take-away food throughout lockdown and now are open indoors under strict guidelines.

National Fame for Winkleigh! Fiona’s Farm Fayre, the Kings Arms and Sam’s Cider were all mentioned in a feature in July’s Hello Magazine!

The Post Office was badly hit by the Covid-19 restrictions and the effect of lower footfall, but has continued to serve the community throughout [Ed: See article on page 34]. West Ridge Vets and Mid Devon Motors have continued to provide their services throughout lockdown; Kevin decided after the first day that, despite low sales of fuel (particularly to begin with when there was a problem because supermarkets had bulk bought all the available fuel supplies!), he needed to open during business hours (8am – 6pm) as usual on weekdays to cater for essential workers. In addition to maintenance, repairs, MOTs and motor items they have continued to supply gas, coal, logs, potatoes, eggs and confectionary. Now Saturday

opening times have returned to 9am - 1pm and they are open again on Sunday mornings. Cath from Catkin Blooms has been delivering flowers and the Cactus Shop has been continuing sales online.

Now with the gradual reduction of restrictions, we also welcome back the Seven Stars, Wright and Proper, Catkin Blooms and Changes, all of whom are having to cope with the colossal adjustments that have to be made in order to comply with government rules, yet still provide their customers with the services they need. Changes is operating superbly under complex conditions and Sueno Beauty will follow as restrictions allow. Good luck to Airfield Garage with their expansion. Rangemoors has been offering a Monday to Friday only phone consultation and ordering service.

On a personal level, I need to acknowledge the truly fantastic job that Adam Wonnacott (Landscaping) and Graham Wonnacott (Garden Services) made of renewing the retaining wall and boundary fence that was collapsing between our house and the next door property on Elms Meadow.

New Businesses are also beginning to open: we welcome Jonesy's Café, Pet, Home & Garden Supplies (run by Steve and Shirley Leahy) and East Devon Car Sales, all at the former D & S Supplies building on the Airfield.

For all our local businesses, this is a trying time with changes and inconsistencies thrust upon them, new rules, regulations and restrictions imposed upon them, as well as the responsibility of ensuring that their clientele adhere to the rules and their staff are protected, while also being expected to operate with reduced numbers of customers and still break even financially. Additional administration such as filling in and arranging Furlough forms is an extra burden.

So people of Winkleigh, when online shopping from Supermarkets was almost impossible and no delivery slots were available, these heroes of our village with their 'Dunkirk Spirit' kept the village going. It is imperative that, like the NHS, we don't just clap for them then forget them now that we can go back to supermarkets, online slots are available and we can return to buying luxuries over essentials.

We need to thank them all by continuing to use them and now it's our turn to repay them by supporting them, particularly those who are vulnerable to the effects of online shopping, by weighing up what we would lose, if we don't.

If, heaven forbid, there was a second wave, how would our village fare without them? Imagine a future with no local shops or no Post Office because we are all getting cards from Moonpig, Stationery from Viking and stamps from Tesco?

**'Use it, or Lose it' is the motto of the day for our local businesses.**

*Rachel Goldsworthy*

*Photos of Superheroes Tom Robinson and Naomi Strong by Greg & Rachel Goldsworthy, along with a selfie by Ben Kitchen*



## **A Letter of Thanks from Keith & Francis at the Wright & Proper Coffee Shop**



Just to say a Big Thank-you to all the people of Winkleigh and the surrounding area for your support to us over the past seven and a bit years.

As you know, we were about to leave our little shop due to circumstances both personal and private, but because our core customers have all asked us to stay (!!), we have decided to carry on for as long as we are able. Therefore our doors will continue to be open as usual from 10.30 am till 2.30 pm 'ish on Tuesday to Saturday.

The only difference is that we have had to reduce the number of customers we can sit inside at any one time, due to the current Covid-19 restrictions.

So please all look after yourselves and do remember all that's said in the Coffee Shop stays in the Coffee Shop!

Stay safe and well and thank you all once again.

*Keith & Francis*

## **A Huge Thank-you to the DW Editor and Team!**



I would like to say a very big 'thank you' to you and all members of the team for the amazing colour, bumper 'Lockdown Special Edition'. It really is a very special publication to keep; actually it is a historical document which logs such a variety of reflections, photographs and drawings during this extremely difficult time. While noting the devastation and challenges created by the awful virus, it also highlights so many positive aspects within our community and wider afield.

So, thanks to you all for encouraging a wide-range of contributions and for the hard work, time and commitment (hopefully not tears!) in collating, producing and distributing DW in this challenging time.

*Pam Down*



**Ladies & gents  
Hair and Beauty salon**

**For all your hair and beauty requirements**

**A friendly and local salon**

*Telephone 01837 83004  
Exeter Road, Winkleigh*

**Established  
over 30 years**

## USE IT OR LOSE IT - SUPPORT YOUR LOCAL POST OFFICE!!



How often are we told, as life rapidly becomes more technical and we relentlessly age, to “use it or lose it?” This usually applies to our physical and mental capacities but, in this case, I’m referring to our village Post Office. If we don’t make a concerted effort to use it more from now on then we will surely lose it. This is a call

to all of us who need to withdraw cash, pay money into our banks, settle utility bills, purchase electricity and gas for our home energy, renew vehicle tax and post parcels for business or personal reasons, to do something to secure its position in our community for the foreseeable future and to keep it alive and viable and a business worth investing in.

**There has been a Post Office in Winkleigh for over 125 years and we all need to think now about whether we want to fight to retain it. It truly is under serious risk of closure.**

Without our local Post Office we will all have to get into our cars and drive at least 4 miles to the nearest branch (Dolton or North Tawton) and that isn’t good for the environment, our time management or those who can’t drive. An equally grim future scenario is of an outreach post office in the Village Hall or other community space two or three times a week for 3 hours at a time and with very greatly reduced facilities. No Drop and Go service for the local businesses posting to online customers. No extras beyond the basics.

In 2014 The Post Office, under the Network Transformation Scheme, decided to transfer all of its sub-postmasters/mistresses from salaried to self-employed status by April 2021 with a cash pay-off as an incentive. This was compulsory, so Jan and Sue, our postmistresses at the time, fell into line. It is now the case that all sub-postmasters/mistresses earn their living only through a very small commission on transactions, along with profits from any retail sales. In Winkleigh the sorting office has generated 54.5% of the post office’s total income, bringing with it the responsibility for supervision of the postal staff, their vans and their health and safety, to the postmaster; but that is set to close down as soon as working patterns return to a version of normality. All connected operations will then relocate to Okehampton. Royal Mail is closing 95% of sub-sorting offices in order to save £330 million over the next 2 years.

**It is a hard fact that, without a serious increase in transactions and sales, our Post Office will no longer be a viable business, with transactions needing to double in order for it to maintain anything near to its current financial position. Without this increase the resulting level of earnings for the postmaster will certainly fall below the National Living Wage, which will make the employment of necessary assistance and the rent and utility bills unaffordable.**

So I refer again to the prospect of Winkleigh without its Post Office. I know that many of us will lose out in so many ways if it goes - think about those last-minute presents and cards, the mine of information contained within its staff and its shelves, the freely-given help and advice, the currency exchanges for last-minute holidays, the printer paper when you've unexpectedly run out and have an important document to print, the point to collect the parcel delivered when you were out or which wouldn't fit through your letterbox and the services offered to your online business with postage....the list goes on and on.

I feel that it is vital to flag up the current situation while it is still within our power to try and do something about it. I'm going to alter my Council Tax and Water Rates payment methods from direct debit to monthly debit card payment at the Post Office. I already stock up regularly on cards there every few months because they are competitively priced and varied in style and type. I use it as a bank because, apart from the cash-back facility in Londis, the next nearest cashpoint is .... where? Now I need to think hard about any other areas where I think the Post Office might benefit from changes I can make and I encourage you to do the same.

**This business has continued to be there for us all since the end of March with a very personal and friendly service going above and beyond our expectations, particularly for those who are vulnerable. It's time for us to massively return the favour and make a determined decision to "USE IT OR LOSE IT!"**

*Catherine Knight*

## **Winkleigh POST OFFICE**

*~ Not just a Post Office! ~*

**Large range of Greetings Cards, Gift wrap & Tags**

**Toys & Stationery, Photocopying**

**Business & Private Banking**

**of Cheques and Cash**

**Laundry & Dry Cleaning**

**Travel Money**

**Car Tax**

**Mobile top-ups & electric key charging**

**Cash Withdrawals at the Counter**

**Open 8.30 am-5.30 pm Mon-Fri**

**9 am-1 pm Sat**

**01837 83427**

**Owner: Tony Bayley**

## **Winkleigh War Memorial Recreational Field Fund (WWMRFF) incorporating the Sports Centre**

In these troubling and highly unusual times all of us at the Sports Centre and the Fund Trustees wish to bring a slice of normality back to our lovely village of Winkleigh. But of course this has to be done safely in the interests of all of us. Some aspects of our work for the village have been able to continue throughout the pandemic, while other activities are slowly and safely returning, to provide much needed activity.

Frustratingly some activities are not able to return just yet as it is almost impossible to create a safe environment in which they can take place. The Trustees would like to thank all of the fantastic volunteers who have worked so hard in getting their clubs up and running again. To those who have yet to achieve this, please be patient as you are having to work in a strictly controlled environment. With this in mind please note that the Youth Club is unable to reopen now but this situation remains under review. The outdoor play area is also still closed as we are still waiting for work to be completed and the annual inspection to take place. **The Sports Centre is always looking for additional help and support from willing volunteers. We hope, for example, that when the Youth Club does return then there will be more villagers who have the time to support it.**

**JOSH NOON**  
**TREE SERVICES**  
**TREE SURGERY &**  
**LOW IMPACT FORESTRY**  
**QUALITY SEASONED LOGS**  
**& KINDLING FOR SALE**



**☎ 01363 83908**  
**📞 07792 906258**

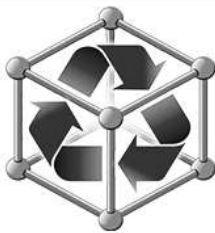
Though largely closed for an extended period, there has been a lot of activity in the Centre and other facilities. A deep clean of the building has taken place, a new more secure entry system installed. Improved external lighting and CCTV security is about to be installed. Most of this work is funded by grants and is being undertaken by a few hard-working volunteers.

Mike Wilson is still working on his history of the Snooker Club and wishes for it to be known that one or more further instalments will appear in future editions of Distinctly Winkleigh. This complex task is being researched and it will be worth the wait for those interested in this historical overview as well as for the village archives.

When it is safe to do so and with sensible behaviour in place, please bear in mind that the old bowling green is available for small group activity at most times. Unfortunately the new playing area at the far end of the existing Winkleigh Football Club pitch is not yet available. But this is being worked on as a matter of urgency by the Football Club.

**Could all users please ensure that their play is safe, enjoyable and that the facilities are used with respect? Litter bins are there to be used and no equipment should ever be moved to another area. There have been many instances when mobile goal-posts have been moved to and left on the night landing site (Winkleigh Football Club pitch) used by Devon Air Ambulance. This means that the landing site can't be used as it is dangerous for the Air Ambulance to land. The posts work just as well on the old bowling green.**

Winkleigh Football Club believes in the youth of the village. They are passionate about promoting football for all and they play a very active part in our community. They have total responsibility for the existing football pitch and they take their duties of safety very seriously. In days of old children could just wander up to the pitch and play to their heart's content. No doubt in these days the sun was always shining, the birds were singing and all was good. However, sad to say, times have moved on. Facilities are always available for children to play football and the restrictions on them are as few as possible. **It must be accepted that this does not include automatic access to the football pitch.** Please bear in mind that when accidents occur on any land leased by Winkleigh Football Club the Club bears any financial



# Twixtmoors ~upcyclers~

**Autentico Paint Stockist**

**Used, Upcycled and Painted Furniture**

**Reupholstering and Recovering Chairs, Sofas and Ottomans**

**Workshops and Training (at your place or ours)**

**Bespoke Commissions**

**Sandblasting and Stripping**

**Tel: 01837 83148**

**[www.facebook.com/twixtmoors](http://www.facebook.com/twixtmoors)**

**[Info@twixtmoors.com](mailto:Info@twixtmoors.com)**

**[www.twixtmoors.com](http://www.twixtmoors.com)**



**Unit 2**

**The Airfield**

**Winkleigh EX19 8DW**

**(on the Bedwell site)**

**Opening hours - we are here most days from 9 am til 6.30 pm**

**Should the front roller shutter door be down, please use the first entrance on the left hand side of the building**

**burden. Accidents have occurred as they always do and this has led to severe financial pressure on the Football Club itself.** If you wish to discuss this matter any further then please contact either the Football Club or the Trustees.

Finally the ongoing toilet situation. These facilities are provided and maintained by the Trust Fund, which is an unfunded registered charity. Recently the toilet block has had a new roof and all plumbing has been updated. The toilets are not pretty but they are functional and are important to several people who regularly ask the Trustees not to close them. New doors have been ordered and they will be covered by CCTV in the near future. They are also being painted to help their overall appearance. We ask all users to bring their own hand sanitisers. We hope this facility will remain in place despite the obvious issues that surround its uncertain future.

*Tom Radcliffe (Committee Secretary & Trustee)*

## **The Winkleigh Singers**

The choir continues to meet socially via Zoom monthly on line for a chat and to discuss the way forward.



*The Winkleigh Singers*  
Registered Charity  
Number  
117121

There will be weekly 'Singing for Pleasure' sessions on line from September. If you would like to join these sessions, contact us via the website [www.winkleighsingers.org.uk](http://www.winkleighsingers.org.uk). Any new singers are very welcome to come and join the group and try us out in this way.

Until proper research into the risks of singing together is carried out and guidance issued by the government, the Trustees have no choice but to suspend activities. They hope to have some more positive news soon.

## **Winkleigh Church Wives Group News**

It has been a few strange months for us all, and especially for the Wives Group. We have not been able to hold any meetings since March, so, as a result we were not able to have our AGM in June. This will be in abeyance until we are able to safely meet socially again. At the time of writing it is still uncertain whether we will be able to meet as a group in September.

I hope that you have been able to keep well in these difficult times and that in the not too distant future we will be able to meet up again.

*Janet Magor (secretary)*

### **Art Course with Celia Olsson**

Celia Olsson is holding an art course at the Sculpture School, Bondleigh -  
Watercolour with mixed media - on 2nd and 3rd September 2020.

For more details and to book please email [celia.olsson.art@gmail.com](mailto:celia.olsson.art@gmail.com) or  
phone 01837 82 796.

## Winkleigh Fair News

**Here is an update for Winkleigh residents about the plans for the postponed “Fair Day” for 2020. The committee intends to have a Harvest-themed “Day in the Square” on 19th September 2020.**

The current plan is to have live music in the afternoon with the Johnny Cash & June Carter Duo from Torrington. The evening live music will be with the popular duo from South Molton - Bicycle Repair Man.

We encourage you to wear “Hoe-Down” fancy dress and there will be our own BBQ running during the day and evening. The Pubs will most likely be offering a takeaway service only, to cope with the anticipated increase in numbers, so bringing your own chairs would make sense. This will be a free event but we will be asking for donations on the day.

We are looking to borrow a large amount of straw bales for the day so we can cordon off the band area and mark out the square to emphasise social distancing. Anyone who can help with this please email me on [sarahjanegoody@gmail.com](mailto:sarahjanegoody@gmail.com).

**We do not intend to advertise this event on social media as we are hoping to keep it for local Winkleigh people as much as possible. Posters will be on display in the village square from 5<sup>th</sup> September giving more details. We therefore politely ask you NOT to share the details on social media.**

We are very much in the hands of the Government as to whether this event will be able to go ahead as planned. There are other live music events in nearby villages over the next few weeks so we shall monitor them with interest and the final decisions will be made at our next meeting on 2nd September.

**We ask that if you have Covid-19 Symptoms you do not attend, and we will also encourage you to wear a face covering if that suits. The Square will be closed so look out for road signs indicating timings etc. Letters will be sent to all residents of The Square after 5th September.**

*Sarah Goody Chairman*



**MDM**  
**MID DEVON**  
**MOTOR CO.**  
Exeter Road, Winkleigh, EX19 8JJ  
**Tel: 01837 83334**  
**www.middevonmotor.co.uk**

## Twiddly Bits for Charity

Last year, film maker Geoff Hodgkinson from Exbourne and his colleagues from the Tiverton Camcorder Club were commissioned by the Bondleigh Barn Band to capture the story of how the Band has grown over the last seven years from 6 players to over 50. During 2019, the film makers worked in rehearsals and at evenings when the Band played in public to produce a polished, technically sophisticated result just as the nation was plunged into lockdown!



The Band had hoped to present a series of evenings to invite locals to see the film and, as had been its custom over the years, to devote any proceeds to charity. As filming was done at Belstone (at the Fair in July), Sampford Courtenay Church (for the Bellringers in September), Fairplace Church in Okehampton (for the Mary Budding Trust in November) and Bondleigh Church (Carol Service in December) it was hoped there would be interest, not least from those who attended and ran the risk of appearing in the film.

**As it seems unlikely that public gatherings can go ahead safely for some time, the Band has decided to make available DVD copies of this documentary film, called "Twiddly bits are sung quite fast" at a cost of £5 each, £2.50p of which will be given to our local North Devon Healthcare NHS Trust in recognition of the work it has done to keep us safe during the pandemic.** You can see a trailer from the film at <https://youtu.be/lcV2XyEC724> If you would like a copy, please send a cheque (payable to the Bondleigh Barn Band) with your postal address and, while stocks last, we will arrange for delivery of a copy to you (see contacts below).

Edwina Hill, Andrew's Corner, Belstone, Okehampton EX20 1RD - (tel. 01837 840332)

Richard Edwards, Shellsley, Exeter Street, North Tawton EX20 2BZ - (tel. 01837 82376)

Paul Cherrett, Clapper Cottage, Bondleigh, EX20 2AU - (tel. 01837 82980)

**Peter Howard, Orchard House, Exeter Road, Winkleigh, EX19 8HW - (tel. 01837 83362)**

**INFORMATION DIRECTORY – Issue 6 - AMENDMENT:**

Page 3 - Southwest Fixings Ltd – Phone number should read 01837 83492.



## From our Torridge District Councillor



The mini-heatwave and thunderstorms have come as we cautiously emerge from five quite extraordinary months that will no doubt permanently change the way we live, think and work in the future.....

Just as Parish Council meetings have all been held online via "Zoom", so have all our Council and Committee meetings at Torridge. Although an impersonal way of doing business, it has led to greater attendances by both Councillors and the General Public (who can now follow our meetings on YouTube) so perhaps this is a positive change if it encourages more people to take an interest?

During lockdown I was delighted that we managed to secure £10k Business Support Grants for both the Village Hall and the Community Centre, although alas we were not so successful in securing one for the Sports Centre as they could not satisfy the qualifying criteria. Although the Parish COVID Support Group has now officially stood down, I would like to take this opportunity of thanking Cllr Angela Findlay and all the volunteers who provided such a vital service throughout the Parish. We now have the reassurance that the plan has been "tried and tested" and so can easily be stood up again if required. Also of course there are many others who provide help and

### **CoHeat Services.**

**Oil Fired Heating and Cooker Specialists.**



**Oil Boiler, Rayburn and Aga Servicing.**

**All plumbing work undertaken no matter how small  
Bathroom refurbishments**

**New kitchens supplied and fitted**

**Complete kitchen and bathroom projects undertaken  
including tiling, carpentry, plastering, electrics.**

**For a free quote or just friendly advice call John on:  
01837 83080 or 07768 164696**

**Working in Winkleigh for 35 years**

support to friends and neighbours without being part of the Parish scheme - well done everyone who has helped out in any way!

As I write, the Parish Council together with Torridge District Council's economic development team are starting to look at ways to promote high-tech business opportunities in the area, especially on the airfield where the recent Kingsley Plastics' build is a good example. As part of this we hope to be applying for grant funding and are looking for a site for a "work-hub" where smaller businesses and individuals can rent time and space in a modern working environment with state-of-the-art communication links etc. Even during a pandemic and recession we must always be positive and be constantly on the lookout for the next generations; especially where they will work, live and the environment that will surround them.

Recent successful planning appeals concerning large developments in the area, as well as the Government's stated aim to further relax planning controls clearly threaten the input and influence of local communities, especially via the carefully thought-through and constructed Area and Neighbourhood Plans. I will be working with others at Torridge to try to ensure that the community continues to have a say in how their neighbourhood is developed, especially in the light of recent planning applications.

As always, feel free to contact me about any matter that may concern you in the Parish and I will always do my best to make sure your voice is heard.

*Cllr Simon Newton - 07943 830220 - [councillor.newton@torridge.gov.uk](mailto:councillor.newton@torridge.gov.uk)*

## ***Sueno Beauty***

Changes, Exeter Rd, Winkleigh EX19 8HW  
**OPEN:** Mondays 10am – 9pm Tuesday 10pm – 7pm

Wednesday & Thursday Evenings 6:30pm – 9pm

### ***Massage and Holistic Therapies***

- ***Swedish Massage***
- ***Deep Tissue Massage***
- ***Aromatherapy Massage***
- ***Pregnancy Massage***
- ***Hot Stone Massage***
- ***Bamboo Massage***
- ***Ear Candling***
- ***Reflexology***
- ***Thai Foot Massage***

**Contact:** 07590233607      **Email:** [suenobeauty@outlook.com](mailto:suenobeauty@outlook.com)

## Winkleigh Village Hall

In this most strange, unique, and unprecedented year, we are all wondering when normality will resume and, indeed, what normal might end up looking like.

Your Village Hall Committee has been, and is, working hard in order to bring the hall facility back to the community, at least in part, and to try and work with the various restrictions that are likely to be in place for some time to come.

**Monthly Market:** We were delighted to be able to bring back the monthly market at the beginning of August – the first since the beginning of March. Yes it was quite different, as measures were put in place to cater for social distancing, hand sanitising and a one way system, but it was wonderful to see so many people turn up to support the stallholders.



The market will be back on the first Saturday of each month, so we look forward to seeing you all there on:

**5<sup>th</sup> September**

**3<sup>rd</sup> October**

**7<sup>th</sup> November**

**December date tbc**

The Committee is also investigating ways whereby the tea, coffee and cake facilities might be reintroduced. This may not be possible in the short term, but we will do our best to bring back this most popular part of the market as soon as possible.

As part of the Covid-19 countermeasures, people entering the market will be asked to provide contact details as part of the Government/NHS Track and Trace system. To say “thank-you” for supporting the NHS in this way, all those providing details will be entered into a free draw on the day with a prize for a randomly-drawn winner. Details provided by people will be kept for a period of 3 weeks to allow for the possibility of anyone developing Covid-19 symptoms in the days and weeks following the market. All details will be destroyed after this time.

**Anyone interested in having a market stall should contact Andrew Ware on 01837 83526.**

**Refurbishing Update:** Those attending the market in August will have seen the extensive work that has been carried out to redecorate and refurbish the building.

The main hall and stage have been completely repainted with new vertical blinds fitted to all windows. Phases 4 and 5 - redecorating the toilets, hallways, and lobbies together with a thorough upgrading of electrical and lighting systems - have been commenced and particular thanks are due to Os Mustafa, Collin Gibson and Charlie Taylor St Ruth in this respect. Thanks are also due to Roger Hill who kindly donated materials for refurbishing all of the windowsills in the main hall. Another important activity has been the pressure-cleaning of all the pathways in the hall grounds ensuring the safety of users in all weathers.

The Committee is additionally creating a 5-year action plan designed to allow for more major projects such as replacement of windows, refurbishing the sprung floor, replacing chairs, and re-siting the projector and screen positions to a more comfortable position. Thanks to Collin who has been working extremely hard to secure grants from a number of sources to be used in financing the plan.

**Events:** We are planning (and hoping!) to open the hall to single and regular events from September onwards. Clearly, this may be dependent upon Covid-19 restrictions at the time but if you are interested in hiring the hall for any purpose then please contact Andrew on the number above.

**Website:** A new website is currently under development to give all the latest news and information and which will allow on-line booking. Details will be published as and when this goes live.

*Tony Aston - Secretary*



**AIRFIELD**  
**General Maintenance  
& Repair Garage**

- MOTs • Vehicle Diagnostics
- Clutches & Cambelts • Brake & Brake Repair
- General Maintenance • Air Conditioning
- Servicing • Bodywork & Restoration



**01837 682 678**  
**[www.airfieldgarage.com](http://www.airfieldgarage.com)**

## **REOPENING OF WINKLEIGH COMMUNITY CENTRE**

After a considerable period of closure due to the COVID-19 situation, we are planning to reopen the Community Centre in September – subject to there being no recurrence of lock-down regulations.

During this period of “inactivity” we have had repairs made to the roof and have also re-decorated the Small Hall.

Whilst we are taking steps to ensure that the Centre is virus-free before use, we will require users to be responsible in the wearing of masks and/or visors whilst in the Centre. Sanitising gel dispensers will be available at the entry door and anti-bacterial surface cleaner and paper towels will be provided so that users can clean tables/chairs after use in order that they are in a fit condition to be used by the next hirer.

Anti-bacterial hand wash gel will be provided in the kitchen and in the toilets. There is an electric hand-drier in the Ladies/Disabled Toilet and paper towels will be provided in the Men’s Toilet.

We look forward to seeing the Centre back in use – even if it is under the “new normal” conditions.

### **Need a new Will preparing?**

**One Will - £100.00 Two Wills - £ 200.00 (no V.A.T.)**  
*including two home visits if required*

**Ivan Sanders, Retired Solicitor (Qual. 1979)**

**8 Elms Meadow, Winkleigh, EX19 8JU.**

**T: 01837 - 682888**

**E: sanderslongdrive@yahoo.com**

## How Winkleigh residents viewed 'traffic' issues in 2014

With the Parish Council currently considering the issue of traffic calming projects in and around the village, it might be useful to review how residents have viewed the traffic problem and challenges in the recent past. Has anything changed?

Responses to the 2013 Parish Plan Questionnaire indicated that of the 37.9% of respondents in the parish, 64.9% identified Traffic and Travel as the major issue.

On average, some 17 out of each 20 respondents felt that traffic is a problem within the parish. The average was even higher within the village itself where some 9 out of 10 residents considered traffic an issue. Perhaps unsurprisingly, rural residents were more tolerant. For example, only 50% of Hollocombe residents saw it as an issue.

The questionnaire asked respondents to select a single location from a list of nine pre-identified parish traffic problem locations, plus identify a 'hot-spot' of their own selection. (*See table below for main problem locations.*)

Traffic Problem Locations	Number	Percentage
'Rat run' (Townsend/School/Torrington Rd)	1032	34.43%
A3124 By-pass	957	31.9%
Village (Square/Exeter Rd)	659	21.98%
Rural (Chulmleigh/Eggesford/Hollocombe)	350	11.67%

The Townsend Hill/Primary School/Torrington Road continuum (often referred to as 'the rat run') was the area of most concern, followed by the A3124 by-pass.

### Traffic Solutions

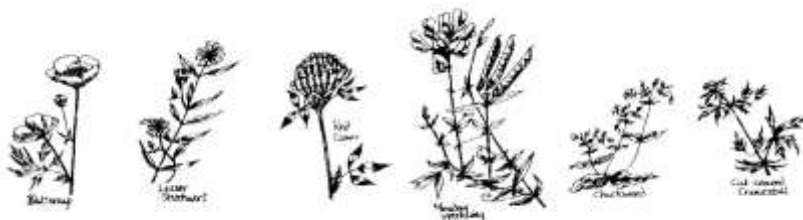
The most popular actions to address traffic issues were: lower speed limits (18.8%), vehicle restrictions (14.5%) and traffic calming (12.1%). Improved signage (10.8%), increased surveillance (10.6%) and parking restrictions (10.4%) were also popular measures. (*See table below for details.*)

Traffic Solutions		
Solution	Number	Percentage
Other	85	2.84%
Road narrowing	125	4.17%
Pedestrian Crossings	197	6.57%
Dedicated bicycle and foot paths	271	9.04%
Parking restrictions	313	10.44%
Increased surveillance	319	10.64%
Improved signs, markings, etc.	325	10.84%
Traffic calming, speed bumps, etc.	363	12.11%
Vehicle restrictions	436	14.5%
Lower speed limits	564	18.81%

## How Winkleigh residents viewed 'traffic' issues in 2014 - Conclusion

**Conclusion:** The results pointed to serious disquiet amongst residents as to the impact traffic has upon life in, and around, Winkleigh. One thing was certain: they had strong views on how traffic affects them and how it should be addressed! When nearly 40% of adult residents respond - a very high response rate for a voluntary household survey - the 'confidence' level for the data is extremely high.

*Extracted from the Community Plan 2014 courtesy of Collin Gibson*



E KNIGHT WOODLAND MANAGEMENT

# AIR DRIED SEASONED HARD WOOD LOGS

LOCALLY SOURCED & SEASONED FIREWOOD  
TO KEEP YOU WARM THIS WINTER

ALL ASPECTS  
OF WOODLAND  
MANAGEMENT &  
FORESTRY  
UNDERTAKEN

TEL: 07875973278

**SB Plumbing and General Maintenance**  
Small plumbing repairs  
01805 603901  
07754819750  
Email: [sb.plumbing@hotmail.com](mailto:sb.plumbing@hotmail.com)  
Changing taps, washers,  
outside taps,  
plumbing in washing machines  
and  
other small plumbing jobs  
Also general maintenance work  
Just give me a call  
for good old fashioned service

## Winkleigh Art Group

As a result of the current situation, the Winkleigh Art Group are not meeting, however we are all keeping in contact with each other and encouraging artwork to help pass the time. We are looking at online workshops (most of them are free) getting ideas and trying out new techniques and subjects.

Each week I have been sending out an idea for the week, information on the history of paint or a technique to try. These all help to keep our artistic ideas flowing. Shown below is a Covid portait in watercolour by one of our students.

The group were due to have an exhibition this year, but this has had to be postponed until next year. We are all looking forward to being able to meet up again and hope we won't have to wait too long!

Keep safe and well.

*Helena Lewis*





## **'KEVIN THE FLY' – A POEM BY RACHEL GOLDSWORTHY**

Summer flies, Cluster flies  
Otherwise known as Loft flies  
They're out and being a nuisance at the mo.  
My grandson Bobby suddenly spies  
Amongst this group of pesky flies  
There's one that always seems to like to follow.

"Grandma, whichever way you go  
That little fly, he seems to know!  
He's special in that group of six or seven!"  
"He's a nuisance is that Fred  
Fly!" (I'd quite like to see him dead.)  
"Grandma, his name's not Fred, it's Kevin!"

Bobby, being only five  
Likes to see most things alive  
Especially once he's named them as a 'friend'.  
But when Bobby went outside to play  
I took the opportunity to spray  
And Kevin and his ilk all met their end.

Later, when I'd swept away  
And Bobby came back in from play  
He spied one on the floor that I had missed.  
After studying it with care  
He gave me an accusatory glare.  
"Grandma, I think Kevin's dead!" he hissed.

"I'm afraid that these things happen  
Flies don't last long" ....( if you zap 'em)  
Explaining as a Grandma is a knack.  
"Flies like bins, he'll love it" I said  
"But Grandma, Kevin ISN'T dead!!  
"He's just sleeping, lying on his back!!"

Reminded of the 'Parrot Sketch'  
Dustpan and brush I'd gone to fetch  
And Kevin, in the garden carefully lain.

Later, at the farm for tea  
Bobby shouts with wondrous glee  
"Look Grandma!! There's Kevin again!"  
*(With apologies to anyone named Kevin!)*

## Tales from the Orchard

In these strangely altered, locked-down times, it seems there is an abundance of wildlife this year, although this may just be the result of having more opportunities to observe. In early 2017, on the historical site of Heckapen Farm's old orchard, we planted around 30 apple trees, selecting all Devon or heritage varieties.



*Left/centre: **St Edmund's Pippin or Russet**, discovered in the orchard of Richard Harvey, in Bury St. Edmunds around 1870 - considered the best early russet.*

*Right: **Tidecombe Seedling**, originated in Arlington, North Devon, 1978 - great flavour. Images Heckapen Farm, 30<sup>th</sup> July 2020.*

Since then, we've lost a couple to 'canker' and a few were stunted by caterpillar or aphid infestations and wind damage, but most have achieved a decent, open 'tulip' form. Troubles this year have included evidence of nutrient deficiencies, eg: magnesium, evidenced by browning between leaf veins, and potash, showing as brown leaf edge scorching. These were checked by applying a seaweed-based feed. On some trees, aphid attack has resulted in curled up, brittle leaves. Although, on inspection I found ladybirds feeding on aphids inside the coiled-up foliage, providing an opportunity for biodiversity to control the problem organically, through the predator-prey relationship. Some of the trees have no apples this year, while others are laden, so we hope for a reasonable heritage apple juice harvest.

Establishing a productive orchard has been challenging: preparing ground, nurturing young trees through drought, monitoring after prolonged wet periods, weed control, trouble-shooting pests and diseases, pruning and now devising a feed and mulching programme to support health. Our aims were to: re-establish a historical orchard; keep Devon and old apple varieties going; create a wildlife haven; provide habitat for insects and birds, including swifts and owls and *maybe* get some apples! It is rewarding, but a 'wild' meadow orchard takes a lot of managing and apples don't just 'grow on trees', despite what we are told - they sometimes need a bit of help to grow, like the rest of us!

*Chris & Gail at Heckapen Farm, Winkleigh -Email [gail@theparadoxfactory.com](mailto:gail@theparadoxfactory.com)*

## THE BALLAD OF THE KING BY OLLY EVANS

A battle raged upon the plain,  
Before a castle black,  
The air was filled with cries of pain,  
With shouts, with screams, with cracks.

From thin air it seemed, the man appeared,  
Upon a gallant steed,  
“The King is here! The King is here!”  
The King was there indeed.

His armour glinted in the sun,  
His sword was bright and true,  
And from this moment he had won,  
Everybody knew.

He galloped through the shouts and screams,  
His sword a flash of light,  
And every man he hit, it seemed,  
Did not put up much fight.

The king strode into the fortress,  
Without a hint of fear,  
His demeanour simply flawless,  
His purpose grave and clear.

Then up the steep black stairs he marched,  
He slayed all in his way,  
He strode under a steep black arch,  
As day began to fade.

On a throne of deep black steel,  
Was where his quarry sat,  
A wizened old woman who made him reel,  
When she turned into a bat.

But this was no trouble at all,  
The king merely thrust his sword,  
And watched the old women fall,  
Dying without a word.

The king had done what no man could,  
He had slain that evil sorcerer,  
For the rest of his days, the kingdom would,  
Live happily and prosper.



## Mobile Libraries Return to the Road

Julie and Torrington Mobile Library will be back on the road bringing books to you from **July 13<sup>th</sup> 2020**. To make sure that customers and staff are safe, we will only be offering a new type of contactless service for the time being. It's called **Choose & Collect**.

If you opt for a Choose & Collect delivery library staff will ask you about your reading likes and dislikes and select up to 5 books for you based on your preferences. The books will be issued to your library card, placed in a bag, and you simply collect them from your regular stop.

We are currently working through our records and calling as many customers as we can to offer this service. If you have not heard from us a week before your timetabled visit and would like a Choose & Collect delivery, please contact Torrington Library by email [torrington.library@librariesunlimited.org.uk](mailto:torrington.library@librariesunlimited.org.uk) or calling **01805 622107** during their normal opening hours. Remember to tell library staff you are a customer of the mobile library and which stop you use when you get in touch.

New customers are also welcome. Please contact Torrington Library to set up a new mobile library membership, and we will endeavour to deliver to you too. You do need a mobile library card even if you are already a member of a library without wheels. You can find an A-Z of where we visit and our timetable on our webpage [devonlibraries.org.uk/web/arena/mobilelibraries](http://devonlibraries.org.uk/web/arena/mobilelibraries)

Mobile Library Assistant Julie is very glad to be out on the road again serving her customers. She hopes to be able to allow readers safely back on the mobile library to choose for themselves in the not too distant future. In the meantime, please bear with library staff while we get used to this new way of working and follow the instructions when you arrive at your stop.

To stay up to date with Mobile Library news follow our Facebook page [facebook.com/devonmobilelibraries](https://facebook.com/devonmobilelibraries). To can find out more about services and reopening plans at other libraries visit [devonlibraries.org.uk/web/arena/coronavirus-updates](http://devonlibraries.org.uk/web/arena/coronavirus-updates)

**Dates for Winkleigh are:** September 4<sup>th</sup>, October 2<sup>nd</sup> & 30<sup>th</sup>, November 27<sup>th</sup>  
**Times are:** Winkleigh Square: 11.00 - 12.15, Four Seasons 12.25 - to 12.55

**Dates for Hollocombe are:** September 17<sup>th</sup> , October 15<sup>th</sup>, November 12<sup>th</sup>  
**Times are:** 11.55 – 12.15 at Shute Wood

# YOUR COMPLETE ELECTRICAL SERVICE



We have more than 28 years of experience in electrical contracting throughout Devon.

- » Rewiring
- » New consumer units
- » Minor works
- » New installations
- » Energy saving and LED
- » Fault finding
- » Emergency call outs



*We'll take care of it.*

**Call us now for a  
free estimate and advice.**

**Winkleigh - 01837 83900**

Bedwell Electrical  
The Airfield, Winkleigh  
Devon, EX19 8DW

info@bedwellelectrical.co.uk  
[www.bedwellelectrical.co.uk](http://www.bedwellelectrical.co.uk)



## Winkleigh YFC

The last three months have been very quiet within Young Farmers. Back at the end of March, we were instructed by the National Federation that we were to shut down all our clubs for 12 weeks; however, this was of course extended further. During this time, we have had members take part in County virtual stock-judging, virtual Devon County Show, and Tarka online rally.

In mid-July, we received the news that clubs in England (subject to local lockdowns) were allowed to re-open. Our chairman, treasurer and one of our leaders have all received training on how we can safely re-open Winkleigh YFC, and all the measures we must put in place in order to comply with Track & Trace and the National Youth Agency guidance. We are now in the process of compiling all our risk assessments and COVID-secure plans to allow us to start resuming our meetings.

When you get to reading this article, the 2019/20 YFC year will have come to a close. While our year has been cut short with our temporary closure and we have not been able to hold all of the events we would have liked to, Winkleigh YFC has had a great year. Looking back on the last year we have:

- Set up our Mini Club
- Held our annual club meal
- Competed in Group and County sports competitions
- Won awards for our carnival float in all five carnivals we attended
- Held our New Members' Meeting
- Held our Cider & Pasty quiz
- Been on farm tours and company visits
- Had members compete at Group, County and Area level in cheerleading and dance
- Had members compete in the Member of the Year competitions
- Had members volunteer in the village during lockdown



On behalf of all the 2019/20 committee members, I would like to say thank you to all our members who helped make everything listed above possible, and to the community around us for supporting everything that we do.

On the 09 September, we will be holding our AGM on Zoom to vote in our new committee and explain to members the way we will operate under COVID restrictions. I wish the next group of officers the very best of luck.

Currently, we have not finalised plans regarding our New Members' meeting as we need to look into the best way for our club to hold this type of meeting, and what type of activities we would safely be able to do. Please keep an eye on the 'Winkleigh YFC' and 'Winkleigh' Facebook pages for information.

If you would like to know more about how we plan to re-open the club and the policies we are putting in place, please do not hesitate to contact Ashleigh on 07949 886480 or check the 'Winkleigh YFC' and 'Winkleigh Mini YFC' Facebook pages.

*Ashleigh Chambers*



# Adam of Eden Tree Care



A friendly, family run company aiming to provide a range of high quality arboricultural services to our customers trees.

**Services include:**

Tree Removals / Dismantles  
Tree pruning, reductions, thinning, shaping and dead wood removal  
Hedge trimming  
Stump grinding  
Tree planting

All work is insured to £5million, complies with relevant British standards and is carried out by appropriately trained and equipped professional arborists

**CALL NOW** for friendly, professional advice and to arrange a **Free no obligation quote**

**TEL: 07398268877**

**Email: adamofedentrees@gmail.com**

**Check us out on facebook and instagram: @adamofedentrees**



## Life on the Verge - Biosphere



Winkleigh Parish Council together with the Winkleigh Society are keen to join the Tarka Country Trust and their Life on the Verge – Biosphere Project.

Since the Second World War, 97% of the UK's wildflower-rich grasslands have been wiped out due to modern farming practices and urban development. During this time the number of pollinator species including the wild bee has fallen. The population of insects is collapsing right in front of

our eyes. The decline is a worrying trend as insects are the cornerstone of all terrestrial ecosystems.

The key factor required for creating a wildflower verge is maintaining low soil nutrients. Fertile soils favour grass, docks and nettles; these are fast-growing tall plants that out-compete the delicate wildflowers for space & light. Wildflowers thrive in low nutrient soils where grasses, nettles & docks grow at a much slower rate.

What is good verge maintenance for wild flowers is an autumn cut and removing arisings (cuttings), therefore keeping soil nutrients low.

For the last few years I have looked after a verge outside my house and collected the cuttings. This year I left most of the verge uncut (only cutting the first 2 feet or so to indicate that it wasn't being neglected). To my surprise the result has been satisfactory, with more flowers than I expected appearing. I hope to try sowing some wild flower seeds in spring next year to try and get an even better result.

Below is a picture of a verge outside Portmore Golf Park near Barnstaple. The owners have given considerable thought to create this, and it is an example of what a little effort can produce.

With luck, next year you will begin to see more of Winkleigh's verges with flowers.

Wildflower Seeds can be bought from:



[www.goren.co.uk](http://www.goren.co.uk)

[www.devonwildlifetrust.org](http://www.devonwildlifetrust.org)

[www.growwilduk.com](http://www.growwilduk.com)

*Alan Jacobs*



## ACE Archaeology Club

Well, we did have to cancel our 'dig' for this year, and we aren't really sure even about next year at the moment. However, we have time to think about it all and see how we can do a smaller dig perhaps with fewer people, somehow being more targeted. We need to think about exactly what more we want to find out about our site at Moistown, near Winkleigh.



In the meantime, the interim report for 2019 is done and on our website. Our director, Janet, has been catching up with all sorts of desk-based, or, more accurately, computer-based, work around contexts and sections as well as doing all the things that she normally has little time to do.

She and I have been trying to have weekly finds cataloguing sessions on my veranda, weather permitting, which it generally has done.

We have over 3000 finds to get through from 2013 to 2019. So far, we have managed to do 2 years' worth so quite a way to go yet. We are hoping the weather holds because I don't know what we will do when it starts to get cold and wet. Go back to working on our own which will be a shame as sharing this has been a good experience, especially at a time when we are so limited in who we can spend time with and what we can do.

We are all having to think of new ways of doing things and so perhaps some creativity will be one positive thing to have come out of this very strange time we are living through. Take care and best wishes from ACE.

*Erica Williamson- <https://acearchaeologyclub.wordpress.com>*

### **Storage containers to rent near Winkleigh**

*20 foot x 8 foot x 8 foot high*

*Long or short term rentals, from £20 per week*

*For more details please call Julian on 07947 877284*

*or e-mail [julian.tolley@btinternet.com](mailto:julian.tolley@btinternet.com)*

**W H T Letting**

## Local Community Trusts – 2020 Grants Available

The **Wright Fund** and the **Old School Fund** are two long-established local community charities, administered by members of the All Saints Church Parochial Church Council and elected trustees. They are required each year to set aside a sum of money as either grants or donations to residents and organisations of Winkleigh Parish for a wide range of specified educational, recreational or other special needs.

The **Wright Fund** (registered charity 205397) can assist recognised organisations or individuals with grants for recreational or leisure activities, or to help relieve individual and family needs. The **Old School Fund** (registered charity 306918) provides financial assistance to help young people under the age of 25 resident in the Parish to pursue post-secondary education or training.

At present, each fund has the sum of £1,000 available each year to be awarded in the form of individual grants/donations of up to £250 per applicant. **The closing date for all applications is 30<sup>th</sup>. September 2020.** Funds will be made available from 1<sup>st</sup> November 2020.

If you are interested in applying for funding from either charity, or would like further information, please pick up an information brochure which is available within All Saints Church, or contact the **Rev. Helen Blaine, Winkleigh Mission Community, on 01837-83710 or [revhelenblaine@outlook.com](mailto:revhelenblaine@outlook.com) or Collin Gibson, Treasurer, All Saints Church on 01837-680172 or [lamcrg@aol.com](mailto:lamcrg@aol.com)**

## Winkleigh Morris

Depending on the regulations in force at the time, Winkleigh Morris hope to restart their practice evenings at the Community Centre every Tuesday from 6th October at 8 pm. New members are always welcome so if you are interested please contact Colin on [bonnygreencolin@gmail.com](mailto:bonnygreencolin@gmail.com) or Angela on 01837 83219 for latest updates.

They are also looking into the possibility of using the Community Centre car park for an outdoor practice on an afternoon before October. You would be welcome to watch - but at a safe distance!

Inevitably, public displays have been severely curtailed over the summer months. However, they have managed to practice suitably socially distanced dances in small groups on occasions in the isolated gardens of some members. They hope that they will have the opportunity to show you these dances before too long.

Further information on Winkleigh Morris can be found on their website  
[www.winkleighmorris.org.uk](http://www.winkleighmorris.org.uk)

## The Lockdown Human-Sized Cat Tank

*Obersturmfuhrer, Herr Los, of 7th Division; Freiwilligen Prinz Eugen, 1st Platoon; "Norsefire", Battalion lead tank; "Hammers". 711, reporting for service, Sir!*

Let's get something very clear right from the start, I am not a Nazi/fascist sympathiser. Quite the opposite. Education is not learning that Germans killed six million Jews. It is about knowing "WHY", and "HOW" a nation could find itself in this position and let it happen. Education is learning to spot the signs so that it can never happen again. This is why I'm here.

I moved to Winkleigh nearly 30 years ago to work for Gail and Kerys of Creative Madness, helping them with the Youth Theatre Project, and making Special Effects for their business. I've worked in the area since then, am now married and live with my wife on a farm in Iddesleigh Parish, but as our postal town is Winkleigh, I hope I won't be considered as too foreign!

Every year my wife has a themed birthday party, and using my SFX skills, I make a few props to decorate the party area. This year's theme was D-DAY as the proposed date would have been 6th June.

Early in Lockdown, The Guardian did an article on Cat Tanks, Devon Live has also done an article in a similar vein. The basic principle: (1) cats love boxes, and will dive in one as quickly as they can, often inconveniently timed - 'cos they are complete.....cats; (2) Lockdown-bored people have silly ideas, and other people run with them. A friend on seeing The Guardian's article said "I'm going to make one myself", I was given some scrap sheets of hardboard, and replied "I'm going to make a Huuman (sic) sized one". With this in mind, I thought of our party theme.



To digress briefly, in my first year at senior school I joined the war-gaming society. Fresh faced and innocent, my first ever game was a WW2 tank battle. As nobody generally wanted to play the German side, they were short, and I was invited (strongly) to join them. As a complete Newbie, with no clue what was required, I had no models. My new comrades-in-arms scrabbled around their model boxes and gave me all the

"tanks" they had loved making, but wouldn't use on the field: all the weak, poor, rubbish, effectively armoured cars along with a few Vesp - anti-aircraft guns on tracks. With what I had, I decided to form a Waffen SS suicide squad, (influenced by Warlord comics and similar). I won renown that day, as I defeated a whole platoon of Churchill tanks (Britain's best), and gained the nick-name Oberleutnantfuhrer.

The observant amongst you will have noticed that this nick-name is not the same as the one I started with. The reason is Education. From that day, I became obsessed with the subject, the "Why", I self-taught myself sociology, psychology, social history, propaganda methods, everything that might help understand the "Why" and "How", to make sure of the "NEVER AGAIN".

The SS were the Political not the military Wing; my nick-name is a military rank, (1st Lieutenant), Obersturmführer is the same rank, but for the political wing of the Wehrmacht, who were the extremists, the fanatics. Friewilligen means volunteer: this Division was made up of German, German heritage Norwegian, Danish, Swede, Finn, Estonian, Dutch and Flemish recruits.

For the tank construction all decals and uniforms were heavily researched and "authentic" apart, from two "in" jokes, congratulations if you can spot them.

I call my end result Human-sized Cat Tank the Mk.XIII Tiger tank, it's actually based on the Mk.1, which has an iconic silhouette. It is at approximately 1/3 actual scale, the turret and barrel move, and the gun fires low grade pyro-technics. (Oh, didn't I mention I'm a qualified fireworks supervisor and I used to rig and fire the Winkleigh annual fireworks show for over a decade).



The frame was made from bits of scrap wood, the shell from the donated hardboard, the barrel from several layers of fireworks-grade mortar shell tubing, with the main length an old down-pipe.

The camouflage, although slightly psychedelic in shade (I ran out of pigments and couldn't buy more with shops closed), is authentic colour and pattern for the German side at

Normandy, using yellow, green and red, and yes I have also researched the science of camouflage and why these colours work. We have two ginger farm cats, and you'd be amazed how well this colouration works around the place.

Total budget? Under £50, and that is only because I had to buy a pack of ink to print off all the decals.

For those interested there is a video on Youtube:- "Human Sized Cat Tank, verses Professor Elemental" <https://youtube/o31sR89W-Ds> , as I made as a video birthday card for my wife.

*John (Spyder) Parry (Local Gardener/Handyman)  
07753 568652 or 01837 83172*

# BESPOAK

FURNITURE & JOINERY

From the heart of Devon to the heart of your home...

*update* your bedroom furniture,  
*transform* your storage,  
*restore* your doors, windows or gates



Custom-built, affordable solutions for inside and out, using a range of materials, including sustainable and locally sourced timber.

We are so confident in our traditional craftsmanship,  
blended with modern techniques, that all  
our work carries a 10-year guarantee.

Contact us for a FREE, no obligation quotation

✉ [enquiries@bespoakjoinery.com](mailto:enquiries@bespoakjoinery.com)

☎ 01837 680 030

[bespoakjoinery.com](http://bespoakjoinery.com)

Bespoak Furniture & Joinery Ltd, The Workshop,  
Middle Reeve, Brushford, Wembworthy, Chulmleigh EX18 7SJ



## Word Search

F	D	S	R	E	D	S	E	T	T	E	R	E	X	V
U	R	E	V	E	I	R	T	E	N	E	D	L	O	G
D	A	P	R	O	D	A	R	B	A	L	A	R	J	Z
H	N	W	Q	L	Z	R	E	H	C	R	U	L	D	J
D	R	E	H	P	E	H	S	N	A	M	R	E	G	Y
I	E	C	H	J	A	C	K	R	U	S	S	E	L	L
W	B	X	G	N	A	I	T	A	M	L	A	D	Y	K
N	T	R	E	I	L	L	O	C	R	E	D	R	O	B
R	S	Z	C	O	C	K	E	R	P	O	O	R	H	O
K	B	I	C	H	O	N	F	R	I	S	E	H	T	H
R	O	D	V	E	L	D	O	O	P	J	G	F	U	V
L	E	I	N	A	P	S	R	E	G	N	I	R	P	S
S	W	M	E	T	D	G	C	K	H	A	O	V	T	C
J	Z	K	I	R	E	X	O	B	Z	I	F	D	G	V
S	S	C	H	N	A	U	Z	E	R	J	E	H	X	P

BICHON FRISE  
BORDER COLLIE  
BOXER  
COCKERPOO  
DALMATIAN

GERMAN SHEPHERD  
GOLDEN RETRIEVER  
JACK RUSSELL  
LABRADOR  
LURCHER

POODLE  
RED SETTER  
SCHNAUZER  
SPRINGER SPANIEL  
ST BERNARD

*Solution on Page 64*



# TEN ACRES VINEYARD

OPEN 1<sup>ST</sup> MAY - 30<sup>TH</sup> SEPTEMBER

SHOP    Thurs -Tues (10am-8pm)

TOURS   Sat 5pm . Contact us to book.

Tel: (01837) 83892    [www.tenacresvineyardcamping.co.uk](http://www.tenacresvineyardcamping.co.uk)

## Number Puzzle

8					5			
	7		9				4	
		9		7	8	3	2	5
3		1		9			5	
		6				1		
	9			3		6		2
2	8	3	6	5		7		
	1				2		8	
			1					9

*("Sudoku puzzles are provided by [www.sudokuoftheday.com](http://www.sudokuoftheday.com)")*

**Solution on Page 64**



Reclaimed Architectural and  
Landscaping Granite

.....

Troughs, Gateposts,  
Flagstones, Steps, Garden  
Features, Architectural  
Building Materials, Walling  
Stone, Granite Boulders

.....

We also offer an installation  
service.

**Phone: 01837 89065**

**Mobile: 07909 998945**

**Email: [info@dartmoorgranite.co.uk](mailto:info@dartmoorgranite.co.uk)**

**Web: [www.dartmoorgranite.co.uk](http://www.dartmoorgranite.co.uk)**

## Solutions

F	D	S	R	E	D	S	E	T	T	E	R	E	X	V
U	R	E	V	E	I	R	T	E	N	E	D	L	O	G
D	A	P	R	O	D	A	R	B	A	L	A	R	J	Z
H	N	W	Q	L	Z	R	E	H	C	R	U	L	D	J
D	R	E	H	P	E	H	S	N	A	M	R	E	G	Y
I	E	C	H	J	A	C	K	R	U	S	S	E	L	L
W	B	X	G	N	A	I	T	A	M	L	A	D	Y	K
N	T	R	E	I	L	L	O	C	R	E	D	R	O	B
R	S	Z	C	O	C	K	E	R	P	O	O	R	H	O
K	B	I	C	H	O	N	F	R	I	S	E	H	T	H
R	O	D	V	E	L	D	O	O	P	J	G	F	U	V
L	E	I	N	A	P	S	R	E	G	N	I	R	P	S
S	W	M	E	T	D	G	C	K	H	A	O	V	T	C
J	Z	K	I	R	E	X	O	B	Z	I	F	D	G	V
S	S	C	H	N	A	U	Z	E	R	J	E	H	X	P

8	3	4	2	1	5	9	6	7
5	7	2	9	6	3	8	4	1
1	6	9	4	7	8	3	2	5
3	2	1	7	9	6	4	5	8
7	5	6	8	2	4	1	9	3
4	9	8	5	3	1	6	7	2
2	8	3	6	5	9	7	1	4
9	1	7	3	4	2	5	8	6
6	4	5	1	8	7	2	3	9



### ALL SHINES WINDOW & EXTERIOR CLEANING

- WINDOWS
- GUTTERS, SOFFITS, FASCIAS
- SOLAR PANELS
- HOUSE WASH (SOFT METHOD)
- CONSERVATORIES
- ROOF DE-MOSS
- PATIOS, BRICK, PAVING, DRIVE-WAY



Tel: 01805 938502 - Mob: 07711079577



## What's On Diary – 2020

*All dates & details are believed to be correct at the time of going to press, but note that events may have to be cancelled or postponed at short notice. Mobile Library dates have been included, in view of the break in their service. Please send details of any future events to [articles@distinctlywinkleigh.co.uk](mailto:articles@distinctlywinkleigh.co.uk) Changes will be advised via our online diary at [www.winkleighonline.com](http://www.winkleighonline.com).*

<b>September</b>	
1st	WPC Covid-19 Help Service Step-Down
4 <sup>th</sup> from 11.00 am-12.15	Mobile Library – Choose & Collect, The Square
4 <sup>th</sup> from 12.25 – 12.55	Mobile Library – Choose & Collect, Four Seasons
5 <sup>th</sup> from 10 am-12 noon	Monthly Market, Village Hall
17 <sup>th</sup> from 11.55 – 12.15	Mobile Library – Choose & Collect, Hollocombe
19 <sup>th</sup> from 10 am-12 noon	Free Defibrillator training/refresher, Village Hall
19 <sup>th</sup> afternoon / evening	Winkleigh Fair Day, the Square (See Posters)
23 <sup>rd</sup> starting at 7.30 pm	WPC meeting – venue to be confirmed
26 <sup>th</sup> starting at 9 pm	SW Children's Hospice Virtual Memories by Moonlight Ceremony - <a href="http://www.chsw.org.uk/moonlight">www.chsw.org.uk/moonlight</a>
30 <sup>th</sup> Closing date	For Community Trust Grant applications
<b>October</b>	
2 <sup>nd</sup> & 30 <sup>th</sup> 11 am – 12.15	Mobile Library – Choose & Collect, The Square
2 <sup>nd</sup> & 30 <sup>th</sup> 12.25 – 12.55	Mobile Library – Choose & Collect, Four Seasons
3 <sup>rd</sup>	Monthly Market, Village Hall
6 <sup>th</sup> from 8 pm	Winkleigh Morris practices, Community Centre
9 <sup>th</sup> doors open:-6.45 pm	Chulmleigh Rural Cinema "Emma" – 01837 83307
15 <sup>th</sup> from 11.55-12.15	Mobile Library – Choose & Collect, Hollocombe
<b>November</b>	
12 <sup>th</sup> from 11.55 – 12.15	Mobile Library – Choose & Collect, Hollocombe
13 <sup>th</sup> doors open: 6.45 pm	Chulmleigh Rural Cinema "The Personal History of David Copperfield" – 01837 83307
27 <sup>th</sup> 11 am – 12.15	Mobile Library – Choose & Collect, The Square
27 <sup>th</sup> 12.25 – 12.55	Mobile Library – Choose & Collect, Four Seasons

## And Finally . . . . .

You may have noticed that in this edition we have retained the coloured cover pages but reverted to monochrome on the inside pages, as we don't have a magic money tree to permit everything to be in colour, much as we might like to. Instead we rely on the loyalty of our advertisers and sponsors, whom we thank for their continuing support in these uncertain and unpredictable times.

In this edition, as well as an emphasis on traffic issues, footpaths and cycle-routes, the articles on our local businesses remind us how much we relied on them during lockdown, almost taking them for-granted. Now that lockdown has been eased, it is vital that we continue to support them. **After all "we don't know what we've got 'til it's gone" – and then it's too late to do anything about it!**

Last time we were looking for copies of DW 1, 6, 9, 13 & 16 which were missing from our archive. These copies have now kindly been loaned for copying / donated. Our thanks go to Red Hanlon and Rachel Cooper/Simon Standing for answering the call!

**Please note that the deadline for contributions to all future editions of Distinctly Winkleigh is being brought forward from Friday to Thursday to leave a bit more time to put everything together before proof-reading and dispatch to the printers.**

**The deadline for contributions to the winter edition will therefore be NOON on Thursday 12<sup>th</sup> November 2020 for planned publication at the end of November.**

**In the meantime do continue to Keep Well and Stay Safe.**

### **W.D & S.J.CARNE**

*Independent Family Owned  
Funeral Directors*

Established over 60 years  
Personal Attention Day and Night



**Samantha Colgrave**

Summerhayes, Ingleigh Green,  
Winkleigh, Devon, EX19 8AT  
Email: [samjcarne@outlook.com](mailto:samjcarne@outlook.com)

Tel: 01837 680199

Pre-arranged and Bespoke Funeral Plans  
Available



**HC Joinery**

Bespoke Joinery Services

**Harry Colgrave**

Joiner

All aspects of joinery work undertaken.

Doors, windows, panelling, door canopies/porches, restoration projects, repair neglected doors and windows.

hcc2010@hotmail.co.uk  
07517110668



Summerhayes, Ingleigh Green,  
Winkleigh, EX19 8AT



*John Short*

**Professional Interior & Exterior  
Painting and Decorating**

Clotworthy House, Torrington Road,  
Winkleigh, Devon, EX19 8HR

**Telephone: 01837 83709**



## **WINKLEIGH AERIALS**



**ALL INSTALLATIONS FOR FREESAT AND AERIAL**  
Humax STB,s & Recorders c/w Smart Connections

Set-up services for new TV,s Blu Ray  
Players-Surround Sound and Sound Bars  
Appointments to suit your lifestyle.

\*\*\*\*\* Please call 07970-963450 \*\*\*\*\*



# Heating, Cooking & Living.

- Stoves & Fires • Flues, Chimneys & Stove Installations
- Seasoned Logs • Range Cookers • Spares & Accessories



To see one of the largest selections of stove, fires and range cookers in the South West, many of which are live and on display, visit Rangemoors. Whether you want to add warmth and atmosphere to your living space or cook up a storm in the kitchen, we have the perfect appliance for you and your home.

**Telephone 01837 680068**  
**[www.rangemoors.co.uk](http://www.rangemoors.co.uk)**

