

# **DISTINCTLY WINKLEIGH**



*Working for Winkleigh*



**Edition 77**

**Spring 2021**

*Cover sponsored by  
George Shacklock, MTF Contracting, Winkleigh. 01837 83325*

**The Winkleigh Society Quarterly Journal**



Let us help you take the stress out of family or friends coming to visit. Clotworthy, a period Georgian house close to the village centre, offers 4\* Gold Award accommodation.

All rooms are large and with good views, and all have en suite facilities with free standing baths or showers.

Give us a ring for availability or send us an e-mail,

## **Clotworthy House Bed & Breakfast**

**Torrington Road, Winkleigh, Devon EX19 8HR**

**Telephone Susan or John Short: 01837 83709**

Email: [enquiries@clotworthyhouse.co.uk](mailto:enquiries@clotworthyhouse.co.uk)

Web: [www.clotworthyhouse.co.uk](http://www.clotworthyhouse.co.uk)



**Local Family Run Residential  
Sales & Lettings Agent**

**Call us for a FREE  
no-obligation Valuation of your Property.**

**01837 83393**

**[info@howesestates.co.uk](mailto:info@howesestates.co.uk)   [www.howesestates.co.uk](http://www.howesestates.co.uk)**

**Sell your property from 0% and no upfront fees\***

\*terms and conditions apply

## DISTINCTLY WINKLEIGH - PUBLICATION INFORMATION

The Winkleigh Society publishes Distinctly Winkleigh quarterly at the end of February, May, August and November. Copies are delivered free of charge to all households and businesses in the Parish.

All articles submitted for publication may be subject to editing, primarily for space or layout reasons. Please email your articles to [articles@distinctlywinkleigh.co.uk](mailto:articles@distinctlywinkleigh.co.uk), or contact the Editor for delivery.

Advertisements from businesses in the local area should be emailed to [adverts@distinctlywinkleigh.co.uk](mailto:adverts@distinctlywinkleigh.co.uk), or contact the Editor for delivery.

Advertising for not for profit events is free of charge.

**The deadline for articles and adverts is NOON on the second THURSDAY of each publication month (February, May, August and November).**

Please note that the views expressed in submitted material are not necessarily shared or endorsed by the newsletter team or The Winkleigh Society. Furthermore the Society does not recommend, or accept any responsibility for, any information, goods or services advertised in adverts or articles.

### ADVERTISING RATES PER SINGLE EDITION:

**Quarter-page: £12.50, Half-page: £25, Full page: £50**

---

**EDITOR:** Godfrey Rhodes, Winkleigh EX19 8JP - Tel: 01837 682982

**PRINTERS:** HEDGEROW PRINT, CREDITON, EX17 1ES - Tel: 01363 777595

---

### WINKLEIGH SOCIETY COMMITTEE MEMBERS

<i>Chair</i>	Penny Griffiths	01837 83407
<i>Vice Chair</i>	Margaret Miller	01837 83398
<i>Hon. Treasurer</i>	Alan Mulcahy	01837 680145
<i>Hon. Secretary</i>	Philip Griffiths	01837 83407
<i>Committee Members:</i>	Alan Jacobs	Barbara Jenkins
	Royston Naylor	Godfrey Rhodes
	Rachel Goldsworthy	Sue Dally

All residents of Winkleigh are members of The Winkleigh Society and are welcome to attend and vote at Society Meetings. Further information about the Society, as well as what is going on in Winkleigh, can be accessed online at:

**<https://winkleighonline.com>**



**<https://facebook.com/TWSDW/>**

---

***Cover photograph for this edition by 'Stone' Naylor***

## The Winkleigh Society Chair's Report - Spring 2021



Keeping a committee energised and moving projects on during this pandemic is challenging: which is why, after our Zoom meeting in December, we decided to launch a **Poetry Competition for children**.

Our youngsters have had their lives tipped upside down and we are inviting them to express how they feel about it.

**The winning poems will be printed in Distinctly Winkleigh and we will compile a special limited-circulation booklet of all the entries to mark this shape-shifting time in our Village History.** Details of how to enter, the prizes, the rules and who is judging the entries are given on pages 59 & 60.

### **Other News:**

**On The Verge:** The Winkleigh Society has purchased a scarifier. Thanks very much to Roger Hill, [South West Fixings] who has made a sizeable donation towards it. The scarifier rips up the dominant grass and gives the wild flower seeds a chance to grow. Thanks also to Alan Jacobs for championing this initiative.

**The Winkleigh Society Archive:** A new addition to our archives appeared in my porch last week: an envelope full of photos and programmes from the early days of the local Drama society 'WASPS'. The late Peggy Osman was a founder member of the WASPS in 1983 and a series of very popular plays were staged in the Village Hall until the mid-1990's. It is much missed.

**Celebrating local champions** is a key ingredient of Distinctly Winkleigh which is the flag-bearer of The Winkleigh Society. Good to hear that Kim Melhuish, after all the work, time and imagination she has invested in the Biodiversity Area, has been recognised by an award [see page 6].

Ben Duncan, who spoke at our last Winkleigh Society meeting about his ongoing campaign/investigation about the Control Tower on the former Airfield, is another example of someone who champions something that matters to them. Greg Goldsworthy takes up the story [on page 39].

*Penny Griffiths*

## **Winkleigh Information Directory - Update**

Page 15: Allotment Group:

**Change** Contact Details **from** Sheryl Jones

**To** Catherine Knight, 07816 608819, Email: cathpknight@gmail.com

## THE FUTURE OF WINKLEIGH POST OFFICE

**There follows a Joint statement from Winkleigh Parish Council and Tony Bayley – Winkleigh Postmaster.**

On 16<sup>th</sup> December 2020, Winkleigh Parish Council considered the public response to raising the precept to give short-term financial assistance to Winkleigh Post Office from the Parish Council, if an application were received. Members agreed that long-term options for the parish will continue to be investigated into 2021.

The Council resolved that they agree in principle **not to raise the parish council tax** to fund, through a surcharge, support for the Post Office as a private enterprise business in perpetuity, 8 were in favour and 2 against. Cllr Bayley was not present during the vote.

The Parish Council will continue to liaise with Tony Bayley to seek both a short- and long-term solution to retain a sustainable Post Office for Winkleigh.

On 20<sup>th</sup> January 2021, Tony Bayley informed the Parish Council that he has other avenues that are now being explored for the future of the Post Office which he cannot go into details on at the present time. He expressed his appreciation and gratitude for the offers of crowd-funding, which he will look upon as a last resort, but he currently has other options that he is investigating.

**The Post Office will be staying open but how it will be implemented has not been decided. He is very aware of how vital the Post Office is to the community and the surrounding area.**

**Tony wishes to reassure customers that their Post Office is not closing down, but really does need to be used to its maximum potential by the community in order that its long-term future is sustained.**



**Qixx**

Winkleigh

**01837 83229**

## Electrical Contractors

- Rewires, New Builds, Extensions
- Consumer Unit Upgrades
- Showers, Cookers, Heating
- Internal / External Lighting
- Sockets & Telephone points
- CCTV & Networking
- Testing & Inspection (inc PAT Testing)



## Winkleigh Biodiversity Group

We were surprised and pleased to learn that we have been named **Winners** in the Community Group category of the **North Devon Biosphere Nature Awards**. Ten years after this group was formed by Philippa Lausen, Wendy Mondy and Maggie Watson, the commitment of many volunteers over the years has been recognised. Many thanks to you all. **In addition, Kim Melhuish was nominated as a Community Champion for her involvement** and for her blog: <https://winkleighbiodiversity.blogspot.com/> which tells the story from 2012 up to the present day.



In December, despite all the restrictions, we were able to meet in pairs or threes to plant a further 100 native trees in the Spiral Maze in the Biodiversity Area. Thanks to



*Noctule Bat Sketch by Sue Dally  
reference photo: Frank Greenaway*

the enthusiasm of the volunteers, this task was completed swiftly and easily. These trees were provided by The Conservation Volunteers as part of their 'I Dig Trees' project. We were also excited to receive the report on our digital bat survey. We had an amazing 690 bat flights in 3 nights over the detector. Many of these could have been the same bat flying to and fro. We now know we have Soprano Pipistrelle, Myotis species, Common Pipistrelles and Noctule Bats nearby. Pipistrelles are

the smallest British bat and Noctules are the largest.

Plans for the coming months include carrying out a harvest mouse nest survey, a Big Butterfly Count in July and a bumblebee survey. We are always interested in hearing from people who would like to join in, there are plenty of jobs throughout the year. Just contact us via Winkleigh Community Action Facebook Page, or email: [trulywildabout@gmail.com](mailto:trulywildabout@gmail.com). All our records are sent to Devon Biodiversity Records Centre.

You too can send in any wildlife sightings via their website: [www.dbr.org.uk](http://www.dbr.org.uk).

Anyone can register a Pledge for Nature (such as putting up a bird-box or sowing a flowery pollinator patch) at <https://www.biosphere.org.uk/pledge-for-nature>.

*Kim J Melhuish*

*Editor's Note: The Biodiversity Group were the **Outright Winners** in the Community section and Kim was **Highly Commended** for the Champions Group. Very well done!*

## Chulmleigh College Leads the Way in Campaigning for Better Broadband

Executive Head Teacher Michael Johnson says that remote education has highlighted broadband issues being neglected in rural areas.

With the third national lockdown closing schools yet again, it is unavoidable that our children's education will once again be impacted. Whilst living in rural North Devon has many benefits low Covid case numbers meant that Chulmleigh College, unlike many schools, remained open for all year groups from September to December. The return to remote education this term means that our pupils are again suffering the issues created by slow broadband. A recently released Parliamentary report identified the South Molton rural area as having the slowest broadband in North Devon, which overall is one of the slowest parts of the country.

Consequently Executive Headteacher Michael Johnson took the decision to invite pupils who suffer from slow broadband access in to school, as he believes that this makes them 'vulnerable' due to being unable to access remote education, including live lessons, effectively. He also contacted Selaine Saxby, MP for North Devon, who has requested more information about the poor connectivity that so many of our families live with. All parents have been sent a survey and the results will be passed on.





Chulmleigh College featured on the national news regarding this issue, with Mr Johnson being interviewed on the BBC News, Radio 5 Live, ITV Westcountry and BBC Spotlight, which has been a fantastic opportunity to raise the issue both nationally and locally.

He said, “it’s important that the issue of slow broadband is highlighted because it has become a critical utility during the pandemic. The government won’t know the impact of poor connections if they are not told and assumptions will be made that all children will continue learning at home. Rural areas must have good broadband access to allow residents to work, access information, shop on-line and participate in society.

“We must not be left behind in an information revolution or allow our children to settle for lower expectations. Online learning is not a good substitute for school, we all know that.



“But those of us in schools also know that our communities (and therefore our schools) depend upon being connected and attractive to a working population so that our children are not disadvantaged because they live in one of the most beautiful parts of England”.



# CHULMLEIGH COLLEGE

*If you're thinking of choosing Chulmleigh College for your child, why not 'like' our Facebook page to get an insight into life at our school?*

**Why choose Chulmleigh?**

**2019 GCSE Results:** Best in the region for the 5th year. First or second in Devon (non-selective schools) across the key measures of school performance.

**School Life:** Pupils benefit from excellent extra-curricular opportunities in outdoor education, music, drama, sport and cadet corps.

We welcome you to visit us to see how we can help YOUR child achieve 'Nothing But Their Best'






[www.chulmleigh.devon.sch.uk](http://www.chulmleigh.devon.sch.uk)
☎ 01769 580215
🐦 @ChulmleighAT
📧 admin@chulmleigh.devon.sch.uk
📘 @ChulmleighCollege



## Covid Help Service

I am pleased to report that the service is continuing to support people to get their prescriptions and shopping, and most importantly enabling people to attend medical appointments and get their vaccines. I had a good response from my request on Facebook for more volunteers as people were needing help to go to get their *jabs*. However, demand seems to have slowed now as our gallant NHS have inoculated most of the elderly, poorly and infirm. However, if you need help, the service is still going, and I will do my best to match helpers with need.

I am aware that there has been some confusion and criticism over my remark on Facebook that you “were not allowed to drive to receive your vaccination”. People were rightly concerned that the service was putting volunteers at risk by asking them to drive people to receive their vaccine. Having investigated, the confusion can be explained by several factors. Certain vaccines cannot be moved, and specific storage requirements mean that they need to go to one location and the vaccine needs to be used within three days from delivery.

In order to vaccinate patients as quickly and safely as possible, the six practices working together implemented a one-way system for the Lords Meadow Leisure Centre, Crediton. As patients arrive, they are dropped at the entrance and the driver

is then directed to the overflow carpark which is situated near to the vaccination centre exit point. The drop-off point was introduced to ensure frail and elderly patients could get as close to the door as possible at the Centre and avoid patients needing to navigate traffic flow. The one-way system at the Centre provides a separate entry and exit point, with the exit point being closer to the collection/overflow car park.

This scheme enables the patients to flow safely through a one-way system within the vaccination centre, keeps things moving, and avoids traffic chaos as well as parking issues, where there are limited parking facilities. The current process enables large numbers of patients to be vaccinated safely with social distancing in place. So, please if your letter asks you not to drive, please

### **Pet Home & Garden Supplies,**

**Unit 2, The Old Airfield Winkleigh  
Tel 01837 680084**

**[Next to Jonesy's Cafe]**

Open Tuesday — Saturday 10—3pm  
Closed Sunday - Mondays

Please phone to check these times  
before travelling due to current  
Covid-19 restrictions

Wild Bird Foods, Peanuts, Treats, Fat  
balls, Dog Foods, Cat Foods  
Treats, Litters and Bedding. For the  
Home, Toiletries, Cookware, Bin  
Liners,

Cleaning Products, Plastic Ware and  
Stationery. For the Garden, Compost,  
Wood Chip,

Top Soil, Fence care, Hose fittings,  
Plant Foods and Pest Control.

Paints, D. I. Y., Brushes and Rollers.  
Coal and Solid Fuel

We look forward to seeing you.

Stay Safe.

**Tel 01837 680084**

do not. Alternatively, if you are able to park elsewhere and safely walk to the venue, you may do so.

Many centres are advertising Devon County Council's Travel Devon, C-19 Vaccinations – Volunteer Transport: *C-19 Vaccinations - Volunteer Transport - Travel Devon* which patients are welcome to access or **alternatively you can ring or email me and I will allocate a volunteer to assist you.**

Please remember the Practices are working hard to provide vaccinations as quickly as possible whilst maintaining normal services.

I know that in the future I will look on 2020 as the best of times and the worst of times. The best because of the brilliant response both formally through the Help Service and informally through citizens being good friends and neighbours to each other. It is almost a year since the Parish Council set up this support service and I have seen at first hand, day in and day out, how most people are kind, supportive and well meaning. I salute the people of the Parish for their unselfish support of others. We need a good news story, I so thank you.

If you need help due to the pandemic - email [wpccovid19@outlook.com](mailto:wpccovid19@outlook.com) or ring me, Angie, on 01837 682616 Monday to Friday 9-5 Saturday and Sunday mornings only. Leave a message if I am out. I will always get back to you.

*Angela Findlay*

*Vice-Chair Winkleigh Parish Council - Covid Help Service Coordinator*

## **Winkleigh POST OFFICE**

*~ Not just a Post Office! ~*

**Large range of Greetings Cards, Gift wrap & Tags**

**Toys & Stationery, Photocopying**

**Business & Private Banking**

**of Cheques and Cash**

**Laundry & Dry Cleaning**

**Travel Money**

**Car Tax**

**Mobile top-ups & electric key charging**

**Cash Withdrawals at the Counter**

**Open 8.30 am-5.00 pm Mon-Fri**

**9 am-12.30 pm Sat**

**01837 83427**

**Owner: Tony Bayley**

## Winkleigh Parish Council News

**COVID Vaccination support and volunteer network:** The Parish Council are working with local volunteers to provide transport for persons called for vaccine until the end of the current restrictions announced by Central Government. Any person requiring support or wishing to volunteer should contact the Parish Clerk on 01837 89095 / [wpccovid19@outlook.com](mailto:wpccovid19@outlook.com).

**Winkleigh Post Office:** The Council resolved not to provide financial support to the Post Office, by way of an increase in the precept for 2021/22, as a private enterprise business and will liaise with the Postmaster to seek short- and long-term solutions for the future of the post office in Winkleigh should this be required.

**Parking Winkleigh Square:** The council rejected the proposal to install double yellow lines in the Square and have requested Devon County Council Highways to investigate the feasibility of providing a non-enforceable disabled parking bay outside Londis and a dedicated loading bay outside the Post Office.

**Budget 2021/22:** The parish council approved a budget of £38,165 and sets the precept for 2021-22 of £30,051. This equates to an annual Band D household rate of £48.10, which is an annual increase of £3.01 (6.67%) (25p per month/5p per week).

The effect of the decreased tax base because of the Pandemic is £0.74p (1.65%), therefore, the council's actual budgeted precept rise is £2.27 (5.02%) per Band D household.

**New Parish Gateway Signage:** The Council have agreed with DCC a single image and a short description of the village, based on an existing template used elsewhere in Devon. In 2019 WPC reserved a sum of £1750 for this project and DCC undertook to match this funding. The Highways Officer has included this scheme in the DCC 2021/22 budget and operational plan for the area and the funding is available for this project from 1<sup>st</sup> April 2021. The significant costs associated with the installation of the signage are being met by DCC.

**Brad Cars**  
4&8 Seater Vehicles Available  
Local or Long Distance, Airports, Stag  
Nights

**Local Winkleigh Taxi**

**Wayne**

**07846389921**

[denise@bradcars.co.uk](mailto:denise@bradcars.co.uk)

[www.bradcars.co.uk](http://www.bradcars.co.uk)

**From £2 mile**



Local.

Reliable.



Safe

**Winkleigh Parish Neighbourhood Plan (NP):** The plan is now a material planning consideration and carries material weight for all future planning developments in the parish, pending referendum mid-2021.

**Housing Developments in the Parish:** The NP and TDC Local Plan have set aside the land next to the Parish Cemetery (Great Well Park) for 55 dwellings. To date, no outline planning permission has been approved for this site. In addition, prior to the NP and Local Plan being approved, TDC approved outline planning permission for 70 dwellings on the site of the Old Kingsley Plastics on Hatherleigh Road and 55 dwellings on the land to the West of Townsend Hill. The Kingsley Plastics site application is currently going through Planning Control to finalise the details. The land to the West of Townsend Hill has a deadline of 1<sup>st</sup> May 2021 to submit their final plans to Planning Control.

**Devon Work Hub Winkleigh Sports Centre:** The Council, TDC and DCC are making considerable gains and have successfully received a funding offer for the Work Hub at the Sports Centre, which looks to support the development of drop-in, shared workspaces to support those people who are working from home. Considerable work is still required and on-going to get this project up and running.

**Council Membership:** The Parish Council now have 11 councillors and no vacancies, and we welcome Paul Appleby who has lived in the Parish for 9 years and his parents for over 20 years.

**Keep informed:** The Parish Council have an email contact group. If you would like to receive emails from the parish council regarding our meetings, planning applications, road works, Covid-19, and other formal correspondence that affects the parish, please contact the Clerk. You can unsubscribe at any time and your details will not be shared with any third parties.

*Melanie Bickell, Clerk to Winkleigh Parish Council  
Winkleighpc1@btconnect.com or 01837 8909-5*



**When you need  
advice we have  
the solution**

Call our Crediton office  
**01363 77 55 66**  
Manor Office, North Street, Crediton EX17 2BR

Other offices at Exeter, Okehampton,  
Budleigh Salterton, Ottery St Mary and Sidmouth.

Visit [gilbertstephens.co.uk](http://gilbertstephens.co.uk) for more information  
Gilbert Stephens LLP is authorised and regulated by the Solicitors Regulation Authority (no: 536070)

## Mike Roberts - Gone, but not forgotten



Andrew and Fiona would like to thank the many people that sent cards, rang or sent us an email. We were truly astounded by the number and from people that we would not have expected to have known Dad, or at the very least acknowledged his passing.

As with so many others like us who have lost loved ones in these very strange times, we had a very intimate burial with few family other than ourselves. The sun shone beautifully, we had a lovely ten minute ceremony of one hymn, a Bible reading and the committal; job done. We then self-distanced in our garage to enjoy hot soup and sandwiches. The

grandchildren said we needed to toast Grandad with tomato juice and Worcester sauce as it was one of his favourite drinks. I would definitely say that was one to miss!

Dad was not Winkleigh born and bred. He was born at Morchard Bishop then moved to the dizzy heights of Chawleigh. He and Mum bought and moved to Higher Punchardon in 1967. It seems he was quite a character who quite clearly liked a chat on his morning run to Londis for his daily paper, the Post Office for his pension and, of course, the Doctors' Surgery, where he would be able to come home and tell us all about the Doctor's car, what make it was, how many miles it did to the gallon, where they had been on holiday, but not much further forward with what was the matter with him! On visits such as these to the village he became well acquainted with many village people.

Here in the shop he liked to come and have a natter with lots of the customers, most of them couldn't understand a word he said, but that added to the character. For many years Dad worked as a lorry driver for the Milk Marketing Board, first on churns and later on the tankers. His knowledge of farms and farmers throughout much of Devon was unrivalled and he loved to reminisce about these happy days spent, no doubt talking, whilst picking up their milk.

He was a mild-mannered, non-confrontational person; which it appears many noticed. When someone we love is no longer with us it is without doubt difficult. However, as I said at his funeral, I feel very strongly that we need to celebrate a life well lived. As Christians we have an assurance in the infamous words of Dame Vera, "We will meet again". As a family we remember the good times, forget the not so good and carry on.

*Andrew & Fiona*

From the heart of Devon to the heart of your home...

*update* your bedroom furniture,  
*transform* your storage,  
*restore* your doors, windows or gates



Custom-built, affordable solutions for inside and out, using a range of materials, including sustainable and locally sourced timber.

We are so confident in our traditional craftsmanship,  
blended with modern techniques, that all  
our work carries a 10-year guarantee.

Contact us for a **FREE**, no obligation quotation

✉ [enquiries@bespoakjoinery.com](mailto:enquiries@bespoakjoinery.com)

☎ 01837 680 030

[bespoakjoinery.com](http://bespoakjoinery.com)

Bespoak Furniture & Joinery Ltd. The Workshop,  
Middle Reeve, Brushford, Wembworthy, Chulmleigh EX18 7SJ



## What did you do in the war, Grandma?

We are living in historic times, and the future will want to know about it, whether that future is our grandchildren or the historians.

Many of us will have a box of precious things from the family past, and very often these look back to the wars of the twentieth century. In our case we have photos of grandparents in their uniform both in France and Egypt in the First War and some cards written from the front. From the Second War our parents have left us not only their stories (though they said very little) but also photos and artefacts, in my case a crucifix given to my father by a Polish priest at Belsen. These may now be taken proudly and preciously to school by grand-children and great-grand-children when the history curriculum is appropriate.

This war is a bit different. In previous wars the young men (and some young women) put on uniform and went off to fight; in this war they are asked to stay at home for eighteen months. It may be safer but not very heroic. Meanwhile the battle is being fought by a huge army, this time dominantly women, but who get no time off, no time in port or in the reserve trenches. But I hope some of them and those who are so proud of them are also remembering the future. One day a young voice will pipe up 'What did you do in the Covid War, Grandma?' as their history curriculum comes around to 2020. And they too will be very proud to show off Grandma's face mask, or the painting of grandparents in their full battle kit done by some aspiring artist.

The future historian will also be looking for documents. There have been many excellent poems and pieces of creative writing about Covid (I particularly like the



**Southwest  
Fixings Ltd**

**Agricultural & Building Supplies Trade Counter**

**Tel: 01837 83492**

**Email: [sales@southwestfixings.co.uk](mailto:sales@southwestfixings.co.uk)**

- |                   |                   |                     |
|-------------------|-------------------|---------------------|
| • Fencing         | • Nuts and Bolts  | • Plumbing          |
| • Timber          | • Hydraulic Hoses | • Tools             |
| • Oils and Adblue | • Boots/workwear  | • Fixings           |
| • Calor Gas       | • Tractor and     | • Fasteners         |
| • Animal Health   | Implement Parts   | • ...and lots more! |
| • Batteries       | • Drainage        |                     |
| • Pet food        | • Guttering       |                     |

*Delivery available!*



poem by the Totnes poet Matt Harvey available at [www.bbc.co.uk/news/av/uk-england-devon-53029082](http://www.bbc.co.uk/news/av/uk-england-devon-53029082)), but more prosaic material such as diaries and chronologies will be particularly valuable. You may be sure that future historians will have the memoirs of all the politicians and senior scientists to consult, and some of them may even be unbiased. All the generals wrote careful memoirs of the war but the real gold is a diary of a private soldier or able seaman. Are there any of you front-line warriors who could find the time just to write a note of your ordinary life now? It does not need to be great literature.....<<6.45 got up and on the ward (or delivering food parcels) by 7.30. Your grandchildren will be interested and the historians grateful.

Perhaps Winkleigh may be particularly interesting just because we are not overwhelmed by the pandemic, or at least not yet. Here, the entire thing can feel quite unreal, although I am aware that there are some families for whom it is all too real. The main feature is emptiness which is difficult to record. A picture of an empty High Street means little unless you know it is 11.00 on a Saturday morning. During the wars, our records are of Action, but in this war only a few see it, and just like the soldiers in the trenches they may not want to talk about it. Television makes us think we know what it must be like, but of course we don't. Those like me cannot enter that world literally or imaginatively. Your family will need records not only the artefacts of the war (PPE, sanitiser bottles, and face visors) but also records of the activities. I noticed a couple doing PT in their front room; I wonder if they have recorded it for later generations?

If you take this seriously as an activity to help the future understand do be careful that your records survive, and be aware of how fast electronic communication is overtaken. Remember Betamax? Will digital photos survive? Probably better handwritten or printed on paper. Historians already worry about how many records are lost or unobtainable.

In between helping out those in dire need through the food banks, let us also try and remember those of our neighbours who are fighting the war. They may not need a food parcel, but perhaps a box of chocolates, a bunch of flowers or a bottle left on the doorstep, anonymously 'from the community' might raise their spirits even more than a clap.

*Peter Howard*

**LOOKING FOR A LOCAL PERSONAL ASSISTANT? STOP LOOKING!**

**Helen Farmery is available weekdays to meet your care and support needs**

*A Winkleigh-based friendly service with negotiable hourly rates*

Full DBS, Qualifications, References and Public Liability Insurance  
are available on request

Call Helen on 07534863087 or e-mail at [helen.farmery@yahoo.com](mailto:helen.farmery@yahoo.com)

## **Winkleigh Parish Church News**

A year ago our lives changed in ways we could never have imagined. Social-distancing, lockdown and shielding have suddenly become words in our day-to-day vocabulary. Hand gel and facemasks in our pockets have become the norm. Everything in our lives has changed, the pattern of our year, our village events and the ability to hug family and friends have all been turned upside down. As we plod our way through lockdown #3, it feels like this state of affairs is never-ending and quite frankly we are all fed up and tired of it. We would all be quite happy to see the back of Covid-19 and would delight in some sort of return to normality.

The winter months don't exactly help either. The weather has been wet and the days dark and dreary, those wonderful sunny days seem but a distant memory. At first glance all in the garden seems damp and dead. However, as we head into March and the end of meteorological winter a closer inspection reveals signs of life and hope. Even now in these darkest of winter months, a stroll around the garden reveals signs of new growth. The snowbells are out, the Hellebores are putting on their best display and the first daffodils are emerging. Keen gardeners are planning their sowings and crops for the year ahead, nurturing new life inside in the warmth, ready for planting out in the warmer days to come. The wonders of creation remind us that no matter how dark the days seem, hope and life are just around the corner.

One of the first flowers to appear during these months is the snowdrop. Probably my favourite of those first flowers, their tiny shoots poking through frozen, muddy, soggy ground. Snowdrops huddle together in clumps, almost safety in numbers, as they take whatever the winter throws at them - rain, snow, frost and sleet. Short and squat they survive being battered by the wind and just simply seem to thrive regardless. A closer inspection reveals a beautifully delicate flower, perfectly formed.

I can't help thinking that snowdrops are the perfect flower for this time. Like many flowers, snowdrops have meanings associated with them. They are said to symbolise sympathy, perseverance and hope. At the moment we stand in sympathy with all who mourn loved ones, with our tired and exhausted NHS staff, key workers,

## **RAY SQUIRE CONTRACTING WINKLEIGH**

Hay-making, Grass mowing, Turning, Rowing up,  
Small bale baling & Topping, Hedge Trimming

**Give us call on – 07912316679**

teachers and parents and with all who are lonely and afraid. However much our lives have been touched or untouched by this pandemic, we all feel deeply for and pray for all affected by it.

Snowdrops push through the earth, in their determination to grow and flourish. We have all had to show much perseverance in the last year as we've grappled with adjusting our day to day lives to ever-changing restrictions. Scientists and medical staff have shown perseverance in pursuit of a vaccine and treatments. Many have worked hard to keep communities connected and ensuring that all have been cared for. We have all persevered through this time, in the hope that we will emerge together and once again flourish.

Snowdrops and the emerging life in creation give us hope. They show us that when all is dark and dreary, seemingly barren and lifeless, there is a future ahead of us. At this time we have hope in the vaccination programme: that restrictions will gradually be lifted and we will once again be able to see family and friends. The shoots and flowers remind us that spring will come again, that there will be sunshine, flowers and signs of new life. I hope that once again we will be able to mark the events of life and our community together. In church as we look back on the birth of the Christ child and forward to Easter, we are reminded of the hope which Christ brings into our lives. The hope of light in the darkest places and the knowledge that God is always with us and the hope and joy of resurrection and of new life.

The Scottish poet George Wilson concludes his poem 'The Origin of the Snowdrop' with the lines:

*"And thus the snowdrop, like the bow  
That spans the cloudy sky,  
Becomes a symbol whence we know  
That brighter days are nigh;"*

May we know that our brighter days are nigh.

*Revd Helen Blaine*

***revhelenblaine@outlook.com/ 01837 83710***

***Follow us on Facebook at 'Winkleigh Mission Community'***

- |   |   |
|---|---|
| <ul style="list-style-type: none"><li>• <b>Family History Research</b></li><li>• <b>Birth Marriage &amp; Death Certificates and also Wills can be supplied</b></li><li>• <b>Missing Persons and Vehicle Registrations researched for Devon</b></li><li>• <b>Free quotes</b></li></ul> | <ul style="list-style-type: none"><li>• <b>Please contact:</b></li><li>• <b>Tel: 07930430250</b></li><li>• <b>Derick Skelly</b></li><li>• <b>Flat 5, Moorland Heights,</b></li><li>• <b>Exeter Road,</b></li><li>• <b>Winkleigh EX19 8HW</b></li><li>• <b>Est 1986</b></li></ul> <p><i>Email: <a href="mailto:derick.skelly@yahoo.co.uk">derick.skelly@yahoo.co.uk</a></i></p> <p><b>Contact: <a href="https://derickskelly.wixsite.com/familyhistoryindevon">https://derickskelly.wixsite.com/familyhistoryindevon</a></b></p> |
|---|---|

## Winkleigh Article – DCC Cllr Andrew Saywell



Once again, I would like to start by thanking everyone in Winkleigh for the part you are all playing in keeping our communities safe and overcoming the coronavirus. It is thanks to your efforts that our area has one of the lowest infection rates in the country. At the time of writing (10<sup>th</sup> February), Covid cases in Torrington Rural are officially classed as ‘suppressed’ as there have been fewer than 3 recorded infections in the seven days prior to the 5<sup>th</sup> February.

The infection rate per 100,000 people in Torridge was just 22 on the 10<sup>th</sup> February – the lowest in the UK bar the Orkney and Shetland Islands! Devon’s overall infection rate, at 59.2, is also the lowest upper-tier local authority in England and is well below our county neighbours in Cornwall, Somerset and Dorset.

The vaccine rollout in Devon has also been successful so far, with over 200,000 people receiving their first vaccination dose. DCC and NHS Officials remain confident that we will meet our vaccination targets for the top 4 clinical groups by mid-February and they have also pledged to use mobile sites to help deliver jabs to people in more isolated rural communities – so as time goes on I am hopeful Winkleigh residents will not be required to travel long distances to get their vaccine dose.

Alongside this, during March Devon County Council will be rolling out more rapid community testing sites and plans are afoot to have a mobile testing site to service Torrington Rural. I have suggested to the Director of Public Health and the Officer heading up the Community Testing programme that Winkleigh Airfield is considered as a possible location for any future testing site should it be needed.

Community testing is for people who do not have any symptoms and is aimed at key workers who cannot stay at home. These tests are designed to help pick up asymptomatic infections.

At the time of writing the Council are targeting areas where there have been higher rates of the virus, so the first sites in Torridge and North Devon are likely to be in

**MDM**  
**MID DEVON**  
**MOTOR CO.**  
Exeter Road, Winkleigh, EX19 8JJ  
Tel: 01837 833334  
www.middevonmotor.co.uk

Barnstaple and Bideford. However, I have been assured by the Director of Public Health in Devon that testing sites will become available for rural communities, with mobile sites planned for Torrington Rural, and should we have any flare up of infections they will move testing sites to the area to help contain any community outbreaks.

To book a test, type **devon.cc/testing** into your web browser and it will take you to the booking site. Please remember though, if you have any Covid symptoms do not book a community test but use the national testing system - [www.gov.uk/get-coronavirus-test](http://www.gov.uk/get-coronavirus-test)

While the vaccination rollout has, so far, gone well, and our infection rates are low, please do remember to follow the guidelines – ***hands, face, space*** – and don't let your guard down. Thank you again for all your efforts in defeating this virus. We must keep our infection rates low so that we can start to return to normality again in the Spring and Summer.

Although the pandemic continues to dominate my work and the County Council's business, normal day to day work does continue. The major work in February has been scrutinising the forthcoming County Council budget. Exact details at the time of writing remain 'TBC', however I'm pleased to report there will be more investment into Adults and Children's Social Services.

Highways matters are also on my priority list at the moment, and the inclement weather over January and February has meant we have seen an increase in potholes and flooding incidents, particularly in Winkleigh.



**AIRFIELD**  
**General Maintenance  
& Repair Garage**

- MOTs • Vehicle Diagnostics
- Clutches & Cambelts • Brake & Brake Repair
- General Maintenance • Air Conditioning
- Servicing • Bodywork & Restoration



**01837 682 678**  
**[www.airfieldgarage.com](http://www.airfieldgarage.com)**

Due to lockdown I have not been able to travel as much as I normally would to the village, but I have been able to report pothole and flooding incidents in Winkleigh, including flooding on the road to Chulmleigh and on the airfield road. Potholes have also been an issue in particular on the airfield road and on Eggesford Road. Hopefully by the time you read this the defects will have been repaired, nevertheless it remains a priority of mine to see these roads get resurfaced and I'm pleased to confirm that Highways do have plans to undertake permanent repair works for both these roads.

They do, however, have to work through their existing priority list first. Therefore, while there are plans afoot, I'm not in a position yet to confirm when exactly these works can take place. Due to timescales and the existing priority list they are likely to be in the next financial year but I will continue to push Highways to get these improvements delivered as soon as practically possible.

Please do continue to report highway defects online – **[devon.cc/report-it](https://devon.cc/report-it)** – however if there is an incident that needs immediate attention like serious flooding please ring Highways on 0345 155 1004 so that it can be responded to as quickly as possible.

Finally, the Government have confirmed that the May elections to the County Council will take place. It has been a huge honour to serve as your County Councillor and I will remain at your service up until May. I will be standing for re-election, so I hope to remain in your service afterwards too!

In the meantime, if there is any County Council matter you would like me to look into, you can also now contact me via Facebook on [facebook.com/cllrsaywell](https://facebook.com/cllrsaywell), as well as ringing 07886 446560 or emailing [andrew.saywell@devon.gov.uk](mailto:andrew.saywell@devon.gov.uk).

## Saving Devon's Treescapes

This new initiative is led by Devon Wildlife Trust on behalf of the Devon Ash Dieback Resilience Forum. Devon's treescapes are stunning and are crucial habitats for so much wildlife. However, they have been in decline for many decades and are now facing a threat from ash dieback; which it is estimated will kill at least 90% of Devon's ash trees in the coming years. It will affect everyone, but you can be part of the solution.

Saving Devon's Treescapes aims to provide hope and action in the face of the alarming changes that are already affecting our precious treescapes. Together with help from local communities, farms and businesses we'll plant and nurture over 250,000 trees outside of woodlands over the five years of the project. In some cases the project will be able to provide tree stock and support.

To find out more or to contact the project officer, please see the webpage:  
<https://www.devonwildlifetrust.org/what-we-do/our-projects/saving-devons-treescapes>

## Jacqueline Erica Barnett - Jackie (15.3.1936 – 9.12.2020)



Following admission to North Devon District Hospital Jackie died on 9<sup>th</sup> December 2020. She was a well-known member of the village community and had had many roles on the clubs and committees of village societies; most notably she was a long serving member of the Fair Committee.

Prior to moving to the village in 1970, she lived in Lincolnshire. As a teenager she used to design and make her own clothes and we still have some of the patterns she made. Her other interests were dancing and also motor-biking on her BSA. She competed in road races and trials events and was successful in winning many cups and trophies. When she married in February 1957 she and my father delayed their honeymoon so that they could attend the Golden Jubilee TT event on the Isle of Man, taking their bikes and riding the mountain course.

After having Mike and me, she obtained a job running a café on the main road between Newark and Lincoln which was frequented by musicians and performers on their way to perform in Lincoln. During this time, among others she met the Rolling Stones, Jimmy Hendrix and her favourite, Englebert Humperdink! As they were all up and coming stars at that time they very often gave out tickets to their performances to the staff so she saw them on stage also.

In February 1970 we moved to Winkleigh, initially living in Nine Beeches as was, I believe it is now called Croft. Whilst there she renovated the large kitchen garden and I have many memories of sitting in the sun under the fig tree that was there.

She worked in Mitchell's hardware store as it was in the 1970s and the Mace shop, Central Stores, which is now housing. She regretted very much the closure of so

# i Clean Devon Window Cleaning

**WINDOW CLEANING, GUTTER CLEARANCE & CLEANING, FACIAS, SOFFITS & CONSERVATORIES.**

**Call Paul @ 07514 – 740712 for a no obligation quote.**

**Email [paul@icleandevon.co.uk](mailto:paul@icleandevon.co.uk)**



**[WWW.FACEBOOK.CO/ICLEANDEVON.CO.UK](https://www.facebook.co.uk/icleandevon.co.uk)**

**Covering Winkleigh/ Chumleigh/ Dolton/ Roborough/ Hatherleigh & surrounding villages.**



many shops over the years in Winkleigh: Mrs. Jones the newsagent, Central Stores, Bird's Shop and many more. Whilst working she made many friends and they have been invaluable help to us in the past few months while she has been ill. Especially Sue, Dot, Joyce and Val and Brian all of whom have helped during this difficult time.

*Karen Riley (Barnett)*

## Lockdown Experiences - Different Moments

In March 2020 we had to make a hasty return from holiday in Cornwall for the start of the first Lockdown. With so much more time on our hands than usual I thought I would do something I had wanted to do for years and that was to read the Bible! It seemed (excuse the pun!) a God-Given moment so I did read the "One Year Bible" book which took me 4 months but such an interesting read and a real Revelation. I have always wanted to read the Bible all the way through instead of the various bits and pieces I have learnt through my life, and to know where all the David & Goliath, Noah's Ark, Lazarus etc., stories actually fitted in - and I found it SUCH an interesting read - and not at all boring!

If you are wondering what the "One Year Bible" is, it is the Bible we all know but written in more "readable" English without losing any of the meaning. You read a portion of the Old & New Testaments each day plus a Psalm and a Proverb - and I actually found the Proverbs as applicable for today's life as they were in the past.

Whilst doing the above, we painted the inside & outside of our bungalow, did loads of gardening, sorted out 2 garages and garden sheds, chucking out lots of "toot" that had never been used. I tried out new recipes instead of baking the usual run-of-the-mill stuff to provide something a bit different and exotic to eat.

**Big Treat of the Week:** Fish 'n Chips from the Van in the Square on Thursdays!

**Red Letter Day:** 20<sup>th</sup> December with my 1<sup>st</sup> Jab at Holsworthy followed by the 2<sup>nd</sup> Jab on 10<sup>th</sup> January, so now better protected against this horrible Corona Virus.

**Jokes:** A friend in Kent who will be 100 this year sends me jokes every day on his computer so I decided to send a daily joke to about 40 friends with the simple aim of "Putting a Smile on Their Face" - trouble is, they SO enjoy these jokes that a page in our monthly MG Newsletter is now dedicated to my Jokes - which to me is a real Joke!

All this time I have felt so very blessed at being a "Grockle" living near Winkleigh with such breath-taking scenery around us, super local shops and such lovely, friendly folk in and around the village, where nothing is too much trouble for anyone - and I say a huge "Thank You" to everyone I know here who has made life so much more bearable during this very difficult Covid time. God Bless You All.

*Jennie GILL*

## Our First Outing since March 2020

On Saturday 16<sup>th</sup> and Friday 22<sup>nd</sup> January Derek and I had our first Covid-19 Vaccinations. The only way I can describe it was like a Military Operation. It was so smooth from start to finish. The venue was Lords Meadow Leisure Centre in Crediton. It was sign-posted at Jockey Hill roundabout and then volunteers were at all the road junctions guiding you there. Passengers were dropped off at the door and drivers told where to park.

The first thing was to sanitise your hands outside the door then you were taken in, shown exactly where to sit and taken to your vaccination station, which for Wallingbrook was Station 6. Everyone at Station 6 was from Wallingbrook. You were asked more questions, name, age, allergies etc. After the vaccination, which was painless, you were shown back to another chair where you had to wait for fifteen minutes. Another volunteer then took you outside where someone found your car and driver.

A very big thank you must go to all the volunteers who were on duty at the venue. The only groups I can name were The Lions Club of Crediton and the Medical Students from Exeter University. Another big thank you must go to Alan and Marie-Claude Mulcahy who volunteered to take us there.

Even though we have had the vaccination we and all who have had it must be very careful to abide by the rules and stay in, particularly until we receive the second dose. We beg everyone, whether you have had the vaccination or not as yet, to follow the rules and only go out if really necessary. We hope that in this way we will eventually beat this awful pandemic.

Finally to Mid-Devon Healthcare and Wallingbrook Health Group - Thank You.

*Margaret and Derek Miller*



**General Building Works  
Period & Listed Building Renovations  
Maintenance & Repairs**

**For a free, no obligation estimate, please call:**

**01837 83890 • 07541 002017**

**info@obcd.co.uk    www.obcd.co.uk**

## From our Torridge District Councillor



As I write we are one month into the latest lockdown - but at least there is some light at the end of the tunnel with the impressive rollout of the vaccine programme; a significant organisational and logistical feat even by military standards!

However as our knowledge of the virus grows we are learning that we will need to continue to protect ourselves for many years to come and so our routines will have to change - probably for ever.

Well done and a big thank you to all the volunteers who have been driving people to get their jabs in Chulmleigh, Torrington, Crediton or even Exeter!

At Torridge we have been grappling with putting together the new budget; the pandemic does not seem to have had quite the financial impact we feared, as Government help has been more generous than predicted and the Council also had a significant “bounce back” last summer with the surge in numbers holidaying in the region. Still to be finally agreed but it looks like we will not be cutting any services although we will need to increase car parking fees, especially during the tourist season on the coast, as well as a modest increase to green waste collection charges spread over the next few years (we are currently one of the cheapest in the UK).

Congratulations to our neighbours in Ashreigney who have successfully waged a long campaign to stop the use of Eaglescott Airfield by the large jet helicopters that have been blighting our skies for the past 18 months. Operating mainly from Newquay and Portland these civilian companies had been invited to use the airfield contrary to planning permissions – sadly it took the planners at North Devon Council a long time to act, but thanks to some persistent local campaigners and pressure from all levels of local government and our MPs we got there in the end!

Work on the Winkleigh Work Hub continues apace guided by the Torridge Economic Development team. Most funding is now in place (including a £800 grant from my Councillor’s fund) and the necessary works have been planned and submitted for approval – special thanks to the trustees of the Winkleigh Sports Centre for their enthusiastic support. Being able to walk to and rent space on a modern workstation with high-speed communications will be major asset for those working from home in the area who need access to this level of office support.

As always do feel free to contact me by email or phone if I can help in any way.

*Councillor Simon Newton / 07943 830220 / [councillor.newton@torridge.gov.uk](mailto:councillor.newton@torridge.gov.uk)*

## What's going on at Winkleigh Methodist Church?

What's going on at Winkleigh Methodist? Well, inside the church building, very little aside from regular running of taps and flushing of toilets to guard against legionella! However, being a Christian doesn't stop when the building is closed .....

Just like everyone everywhere, in all walks of life, we have been trying to work out ways of adapting what we normally do. These are some of the different ways we've been collectively **'Doing Church'**:

- Sunday services recorded on video (YouTube) or a printed sheet being emailed or delivered (organised centrally by our Circuit);
- Some prayer, planning and study meetings held online (our Church and Circuit);
- Enjoying attending different online services anywhere in the country or the world! Getting to know people in other churches and learning new songs;
- A handful of informal social meetings in groups of up to six last summer when restrictions allowed (barbecue, cream tea);
- Keeping in touch with each other via social media groups;
- Joining with the Parish Church for Creative Station – children's activities;
- Oasis meal delivery – this has continued weekly without even a break over Christmas – big thanks to the Oasis team!
- Harvest – marking the celebration by decorating the outside of our Church with pumpkins and tractors to thank God for our world, our food and all those who work to provide it for us;
- Christmas lights to celebrate the birth of Jesus with the emphasis this year on peace. Thanks to Kevin and Bridget, the Christmas tractor made an appearance around the village! The joy and hope of Christmas was particularly appreciated in 2020!

### **'Doing Church' as an individual.....**

- Attending interesting talks online (about discipleship and social action, domestic abuse);
- Playing/singing along to Christian music;
- Talking to those lonely or living alone;
- Praying / Bible reading / trying to stay close to God.



We also asked people what was positive or negative about their experiences:



- More time to do things I enjoy or value most (family walks, gardening, playing games, Zoom meetings with family while eating fish and chips)
- Caring for God's creation, involved in taking actions and protecting the natural world
- Connecting with distant friends and family more often through phone or video calls
- Spending time with people in their gardens or outdoors – friendships even more precious!
- Reconnecting with my neighbours (swapping seeds and plants, collecting prescriptions)



- Missing seeing everyone every week and being together as a big church family
- Missing talking to each other and worshipping/singing together
- Missing going out with friends after church
- Feeling detached from family and friends
- The uncertainty of when it will all 'get back to normal'
- Worrying about loved ones and friends and hoping they stay safe
- Losing loved ones
- Missing giving each other a hug
- Missing seeing the children growing up
- The challenges of home-schooling!!



If you have a prayer request, please contact Alan or Fiona Marshall on 01837 83809 or Pam Down on 01837 83674 or any other member of our Church - we will do our best to help

## News from Winkleigh Village Hall

As I write this article, we are still in the grips of lockdown, the Beast from the East has delivered us freezing temperatures and the Village Hall remains closed with no indication yet as to when we might be able to open our doors again.

Thankfully in the run up to Christmas we held a lovely festive market, which was very well attended, and listened to live Yuletide music on stage by Bondleigh Barn Band. Thanks go to Peter Howard for facilitating this. The market and the live entertainment provided a shining light in a year dominated by Covid-19.

However, behind every cloud there lies a silver lining. The lockdowns and tier restrictions over the last 12 months have provided the Committee and helpers with the opportunity to renovate and redecorate large parts of the Hall. Those amongst you who follow us on Facebook, will know of some of the work that has been done.

In summary, the following has now been completed:

**Main Hall:** Redecoration; modern vertical blinds fitted over the windows; ceiling lights replaced with LED fittings; installation of large mirror ball and spotlight;

**Stage:** Redecoration; replacement of main curtains with new ones co-ordinated with the new hall colours; projector and screen lowered for more comfortable viewing;

**Gents and disabled toilet:** Complete redecoration. New vanity unit and taps;

**Front lobby:** Complete redecoration;

**Ladies toilets rear of stage:** Complete redecoration; fitting of new self-closing taps; replacement of old curtains with modern vertical blinds;

**Corridor at rear of stage:** Complete redecoration;

**Smoke alarms:** Fitting of integrated smoke alarm system throughout building.

**Future work includes:** All toilets to be fitted with new suites, the rear meeting room to be completely redecorated with new carpet fitted here and on the rear stage corridor. Additionally, we are currently in the process of gathering quotes to replace and modernise the aged kitchen.

*In this respect we are looking for any chippies out there who might be able to volunteer some time to assist in fitting when the time comes. This is a big ask but means that funds can be better directed to ensuring we are able to get the best value for the kitchen itself. Anyone willing and able to volunteer their services for this, or in any other way, can contact me on 07946 490967.*

Therefore a great deal has been going on behind the scenes and I would like to personally thank everyone who has contributed in any way. All we need now is the go-ahead from Government to allow the public back in for events to be arranged and for classes to resume.

Financing for much of this work has been made possible by procuring a number of grants from local authorities and other sources. Our Treasurer, Collin Gibson, has done a terrific job in achieving these funds.

In the near future, you will be able to access the Hall's new website. Committee member, Charlie Taylor-St. Ruth, has been developing this facility over the past few weeks. When it goes live you will be able to gain access at the following addresses: [www.winkleighvillagehall.co.uk](http://www.winkleighvillagehall.co.uk) and [www.winkleighvillagehall.com](http://www.winkleighvillagehall.com). Both addresses will take you to the same website. The site will include a calendar of events and a facility for online booking, as well as many other features. We are keen to put together a gallery of photographs which depict the history of the Hall in any way. If anyone has any photos, particularly those taken pre-2000, then we would be keen to hear from you and to talk to you about the possibility of using them on the website. The new email address for the hall is [info@winkleighvillagehall.com](mailto:info@winkleighvillagehall.com).

Ian Whitehead has recently joined the Hall Committee as the Winkleigh Parish Council representative and I extend a huge welcome to him.

I have already mentioned that the projector and screen have been lowered. On future market days, this will provide an opportunity, for a small fee yet to be determined, to advertising local businesses, organisations and events to the public.

This could include free advertising for market stallholders. Again, contact me on the above number if you might be interested in advertising.

Without in any way wanting to wish away the spring and summer, we are looking forward towards the autumn/winter and the possibility of forming a monthly cinema club. Early days as yet, but we will gauge the support we are likely to have from residents and let you know over the summer how this might work.

If you are interested, please send us your ideas for film screenings at [info@winkleighvillagehall.com](mailto:info@winkleighvillagehall.com) or ring me. In the meantime, stay safe everyone. We must all look forward to brighter days ahead.

*Tony Aston (Chair)*

*-[tonyaston1953@gmail.com](mailto:tonyaston1953@gmail.com)*

*07946 490967*

### **Fiona's Farm Shop**

Fresh vegetables and fruit

Fresh milk, butter, cream

Fresh & frozen fish

Our own homemade sausages &

Dry-cured bacon.

Beef, lamb and pork.

Curworthy cheese and yoghurts.

Assorted chutney, pickles & jams

Homemade pies, pasties, cakes.

Frozen ready meals.

Home-cooked meals - Wed & Sat

Collect or local delivery

Open 10 till 2 - Tues, to Sat.

Free Delivery to the Village  
(minimum order £10)

**Contact: 01837 83382 or**

**[fionasfarmshop@gmail.com](mailto:fionasfarmshop@gmail.com)**



## Hollocombe Community Group Update

### November 2020 – January 2021

Our Hollocombe Community Group continues to support and help everyone during these unprecedented times. We now have 70 members on the Hollocombe Community Group Facebook site, and we know we can rely on each other if anyone needs anything, including food shopping and medicine collection.

Homemade goodies continue to appear in our Hut and once again a massive thankyou to everyone with a special mention to Flic, Maddy and Lucas for their delicious selection of weekly baking including cakes, shortbread, tea bread and choc chip cookies. Jo excelled herself with amazing homemade Yule logs and Glenn continues to supply eggs, chutneys, and jams for a charity donation.

Over the last few months there have continued to be many fun and celebratory events organised by our group and individuals with monies being raised for nominated charities on a regular basis.

- In early November, our Hut was kindly decorated by Helena who also made knitted poppies for sale to raise funds for The British Legion and the Poppy Appeal. Fern is pictured here proudly wearing her poppy! Bel and John's garden was transformed too.



- Wayne organised a special Christmas online bingo event on 11 December which was fun and memorable as usual with Christmas themed prizes.
- Helena dressed the hut with Christmas lights in early December and Santa arrived in Shute Wood with Rudolf, his sleigh, and an amazing grotto for a welcome visit. Huge thanks to Bel and John for arranging Santa to stop by and distribute gifts to the children. Such a beautiful and magical grotto.



- Photographs are posted by many of us including Helen and Abby of the glorious sunrises, sunsets, and nature that can be seen and found here.



- Burns night arrived in Hollocombe with the wonderful sound of Scottish music played by Christine and Steve with their flute and guitar and generously raising money for charity. Helena made sure our Hut looked the part, and fun window and garden displays appeared around the hamlet.



- Beautifully colour-painted stones are appearing all around Hollocombe, on walls, paths and in trees. Such fun to find these when out on a walk. Thanks to Jeff and Sharon's grandchildren for being so creative.
- Drop-in online coffee mornings are arranged on Friday mornings by Wayne and everyone is invited to join and have a chat and catch-up.

Future planned events include a Valentine challenge, and we are currently collecting toiletries for Toiletries Amnesty during February.

Stay safe and take care!

*Sue Dally*

## Brief News from Winkleigh Primary School



Following on from the Government announcement in January the return to school was slightly different to what we expected! Given only one days' notice our wonderful staff quickly switched from everything that was planned for the new term to remote learning.

We have 58 children attending across the school, some are key worker children and some are children that need to be in for a variety of other reasons. We took a different approach for this lockdown. We have all teaching staff, support staff and administration staff in school supporting our children and families. All children in school work in their classrooms with their teacher and are being taught alongside the children at home. Our zoom meetings start at 9:15 and last the whole day, with teachers teaching their children in school and those at home the same time. Our wonderful teaching assistants are also all in the classes to support those children in school. This remote learning approach has meant that all children are having an equitable approach to learning as far as possible.

We have been truly overwhelmed with supportive messages and cake / chocolate parcels that we have received on a weekly basis; it has meant so much. I would like to say a huge thank you to all our wonderful staff who have really gone above and beyond to support all children in this current pandemic. Also a huge thank you to our wonderful families who have supported their children whilst still trying to carry on with their lives. Winkleigh really is a very special community.

*Mrs Vicki Fenemore*

*Jenny Rock*

**Rock Solid Book-keeping Solutions**  
***Creating order from Chaos!***

Collacott Lodge,  
Winkleigh,  
Devon EX19 8LE

Mobile: 07743 683 756

Email: [rocksolidbookkeeping18@gmail.com](mailto:rocksolidbookkeeping18@gmail.com)

Book-keeping, Bank reconciliations, Creditor & Debtor Reports.  
VAT Returns, Accounts to Trial Balance, Liaise with Accountants.  
Temporary, 'One-Off' and Permanent Contracts undertaken.  
Friendly, helpful advice for small businesses.

*CIMA Advanced Diploma in Management Accounting.*  
*Association of Accounting Technicians NVQ IV.*

## Lockdown Experiences from Young People

I think it's important that we all actually realise how damaging (mental health development wise) this separation from their peer group is to young people particularly in the 10-24 years age range. At this time in their lives they should be moving away from interaction with just family to develop their social awareness with friends and colleagues. It's an essential part of growing up and brain development.

This is highlighted in an article from The Mental Health Foundation UK <https://www.mentalhealth.org.uk/publications/impacts-lockdown-mental-healthchildren-and-young-people>.

It's all very well referring back to the deprivations of WW2 or saying, well, they have all this technology and facetime, zoom and mobile phones so what are they moaning about? Nevertheless, there are real issues here that our youngsters are having to deal with and social interaction with their peer groups is a vital part of their development.

**Here are experiences of three local young people during the latest lockdown.** Their names have been supplied to DW but are being withheld on request.

- 1) Girl in first college year at Petroc finds remote learning from College difficult. She says she feels she is not learning, just watching the teacher talk and is unable to ask questions. She says it is hard to get motivated. For one particular subject they have to work in pairs. She has been paired with a girl she doesn't know and that particular girl is not at all bothered about learning, so it's hard to get anything done. In another subject she is in a group of three. The other two students know each other but she is shy and doesn't know them. She feels two's company and three's a crowd. Her first year of College so far has been very difficult and lonely.
- 2) Mid-teens young lady has stated that if it wasn't for the fact that she is in a bubble with her best friend and they are able to walk their dogs together, she would find this current lockdown really hard to cope with.
- 3) Early 20's guy (working) says that zoom is not a good substitute for social interaction, as it's too false and stilted. Family is great but not being able to just meet friends to talk and do activities together is the worst thing. Also misses going to music venues the most. X-Box game with best-friend is the best social interaction happening at the moment, so just waiting for the time when a group of us can meet together and just talk freely.

*Rachel Goldsworthy*

## Lockdown Experience from a Parent

I think the impact of Covid is long-reaching and this lockdown is decidedly harder than the first one. Primarily this is because of the weather and the struggles of getting the children out for fresh air.

During the first lockdown we went for long walks almost every afternoon in glorious sunshine but this time we struggle to manage a few short walks a week due to the incessant rain and this has resulted in a sense of cabin fever.

It has also been much harder due to the far more rigid structure of both the children's school day and our own working days. In the first lockdown we could set our own timetable and this allowed for lots of family activities such as baking, craft and walking. This time, however, we have found ourselves chained to computers all day without the freedom to include other activities which has been difficult on all of us.

We are fortunate enough to have sufficient tablets and laptops to allow both children to have a device each and for us to use our work laptops but I cannot imagine how difficult it must be for parents who are not so fortunate.

I am also lucky that my children are old enough to be fairly self-sufficient with their school work and are able to ask their teachers for help via their zoom calls; for younger children this must be an all-encompassing job for the parents and must make working from home almost impossible.

For me personally, I have found the lack of social interactions incredibly difficult. Whilst I am able to use WhatsApp and zoom, it is no substitute for meeting friends and family in person.

I think the lack of social interaction for young children will have repercussions for a long time to come, especially for young children whose social interactions are far more about play than talking.

My children had the following to say: Covid can make you feel sad because you can't go to school, you can't meet your friends and family and you can't have days out.

*Jess Lomax*

## Views and Comments from Local Teens

### Coronavirus Lockdown – January 2021

"In this lockdown there have been highs and lows. Some of the highs have been going cycling with my dad and walking my dog. The lows have included home-learning which could have been done better.

"I have found that most teachers are just handing out worksheets and not helping when needed. I feel that little thought has been put into this in order for us to achieve.

"For me the hardest part is not being able to socialise with others therefore I have been spending more and more time in my room."

*Chelsea - aged 14*

\*\*\*\*\*

"During the lockdown I have found it very difficult due to not being able to socialise. When at work I am mixing with ten-plus families, I find it very unfair that I am able to do this but I am not allowed to mix with people I am close to, especially my grandparents.

"At present it is even hard to exercise due to the travel restrictions.

In our local area there is only one public footpath available which doesn't involve the busy roads.

"Every day I feel incredibly isolated. I hope that we can return to some form of normal life very soon."

*Brianna - aged 18*

## Lockdown-Experience at Changes

Changes Hair and Beauty Salon would like to thank all our loyal clients who have continued to support our business through this strange time.

Like so many small business we are finding it difficult to keep closing at short notice. It's been hard on the staff: Sally, Mandy, Leanne and Tracey, following all the government guidelines, having to sanitise all work areas, equipment etc., in between each client. This means we are unable to book as many clients as we normally would, working split shifts to keep everyone safe.

As soon as we are given a date to reopen we will be in touch with all clients who were booked in to re-book and will be pleased to welcome both regular and new clients again. Thank you once again for all your support.

*Valerie Bissett*

## COVID 19 - My Vaccination Experience

FIRST AND FOREMOST: get it done! We have got to beat this virus!

My injection was carried out in a most professional way with safety and care at all stages of the process.

However when I received my notification, what concerned me most was the fact I had to have someone to take me to the Crediton Sport's Centre. I am the only driver in my family bubble and I have been deemed very high risk having been diagnosed with cancer right at the beginning of the outbreak, so we have been self-isolating in the best way we can.

Great care had to be taken while I was undergoing treatment and fortunately we had a "fantastic shopper" to help us.

On checking with the surgery I was told the need to have a lift was to do with parking! Therefore I had to find someone to take me, probably someone I didn't know, or how safe they were.

Otherwise I could drive myself and park perhaps in the nearby industrial estate or somewhere else in Crediton and then walk to the vaccination centre, despite being registered disabled and having a Blue Badge. This frightened me after all the care I had been taking.

**Need Help In The Garden?**

**RHS Qualified, Experienced Gardener**

All Aspects of Garden Maintenance

Planting Ideas

Year Round Reliable Service

Call Maxine on 01837 680039 or 07815 309023



Fortunately, a very close friend, who I found out had been involved in a testing program and had tested negative, offered to take me, so I felt safe. We drove there with masks on, windows open and car heating on full.

So not only did everything go very well when I arrived at the centre, I also found out on the day that you CAN drive yourself there: they are geared up for anything, no matter how you get there they will help you. The important thing is being there.

*Name and address supplied*

*[Editor's note: see pages 9 & 10 for official clarification from Wallingbrook Health Centre on parking at Lord's Meadow, Crediton]*



## The 1976 drought and the Pump in Winkleigh Square

Following on from my article regarding the Village Pump in the last edition of Distinctly Winkleigh, I asked if anyone would share their memories of the hot summer drought of 1976 when Pump was used for providing water to those who had none as their supplies had all dried up. Here is a contribution kindly supplied by Derek and Margaret Miller of their experience.

“Phew was it hot!! At the time we were living at Graysbridge Farm, a mixed farm of cattle, sheep, pigs and crops.

“We first realised how short the water had become when the well in the field which supplied us with all our indoor water started to dry up. It used to be pumped by electric pump up to the house to the water tank upstairs in the attic. This provided all our indoor water including taps, toilet and hot water, which was heated by the York Seal, our cooker in the kitchen. What could we do?

“We heard the Pump was open in the Square so most days Derek would take six empty milk churns in the link-box at the back of the tractor and drive up to the Pump to fill them with water for indoor use. We used an old Burco boiler for heating the water.

“As we had to be so careful with our water, bath times were on a rota. The late Betty Heggadon lent us an old, long tin bath. This was placed just outside the back door under the lean-to. Sarah would bath first, then Paul, Margaret and always last Derek, as he was usually the dirtiest, yes, as you can guess - all in the same water. We can laugh now but at the time we had to be so careful with our precious water.

“The Fire Brigade delivered us 1000 gallons directly into the well, but some was wasted as a well finds its own level, but it enabled us to keep the York Seal Cooker going.

“The cattle, pigs and sheep all needed water so most days Derek would drive down to the River Taw near Taw Bridge and pump water into a tank on the trailer. As he says, every day all he seemed to be doing was pumping water!”

Rachel would like to know if anyone else has memories of using the Village Pump in the 1976 drought, or any other memories relating to the pump, that they would like to share.

If you can help, please note them down and either send them to her at 24 Elms Meadow or email them to [rachel@visualux.com](mailto:rachel@visualux.com) or send them to the DW Editor. During Covid-19 restrictions it is not possible for Rachel to visit and take notes but she is compiling a historic record of this unique Village Monument and would love to hear from you.

*Rachel Goldsworthy*

## A Winkleigh connection to the abolition of slavery

The Black Lives Matter (BLM) movement has sparked a resurgence of interest in Black history and, specifically, slavery studies. But until recently the impact of ex-slaves in spearheading the abolitionist movement in the UK has not been recognised.

Whilst the UK ended its role in the slave trade in 1833, it continued to benefit economically from slavery where it continued in America and the West Indies. There was, however, an active anti-slavery movement in the UK, including in Devon, and ex-slaves were at its forefront. One of the most famous speakers and performers was Moses Roper.

Born into slavery in North Carolina in 1815, Moses was repeatedly bought and sold as a slave and moved around the southern states until, in 1835, he escaped and bought a passage to Liverpool. Over the next years he spoke out against slavery at public meetings. Interestingly, he did not stay in the major cities but toured extensively in rural areas including the South West.

His biography records his numerous engagements: some 950 in two years. In 1839, newspapers report him speaking in Exeter and Barnstaple and in 1841, aged 26, he

was invited to give a talk to the Bible Christians in Winkleigh.



Moses Roper: From: Moses Roper, *Narrative of the Adventures and Escape of Moses Roper from American Slavery* (London, 1846)

The Bible Christians were the forerunners of the Methodists and the original Chapel on Castle Street was probably where he spoke. Former slaves such as Roper spoke about their first-hand experience of slavery, often displayed the instruments of torture used on them and, in the words of a local newspaper, described “horrible anecdotes relative to the treatment of slaves.” They played a key role in strengthening abolitionist sentiment in the UK.

Aside from the local interest, other issues are raised by this story. First, one wonders how Moses Roper, a 26 year-old Black man, almost 7 feet tall, describing the horrors of slavery, was received in Winkleigh (or indeed, would be received today).

Other ex-slaves visited Great Torrington, Chulmleigh and Morchard Bishop – what was their impact on the community? How did local people respond?

Second, to understand something of slavery is to gain an insight not only into the economy and politics of the English ruling class in the nineteenth century but also its pervasive influence today. BLM has demonstrated the continuing relevance of slavery to our current times and how the symbols of the racism which supported it are still around, whether in statues, road names or in the grand houses of the National Trust.

Moses Roper eventually returned to the US and died penniless.

As a final thought, it is worth reflecting on the courage, determination, and energy he displayed in both surviving and escaping from slavery, and then in touring rural counties in a foreign country to convince people of its evil.

*Adrian P Mercer*

## **Winkleigh Airfield Project 2021**

This article contains the essence of a post that I added on the Winkleigh! Facebook page in December. It is published here for those who may be unable to access Facebook or did not see it.

I am probably biting off far more than I can chew here so I will need help from anyone interested in this project if it is to succeed.

Much has been written about Winkleigh Airfield during and after WWII – however, already I have noted and been made aware of discrepancies in some of the facts.

My aim is to try and go back to the beginning – say 1930 or so and start there, relative to the land which was to become the airfield. I have yet to collate the information given to me so far but intend to rely on Primary Source information as far as I can, i.e. original documents and statements from those who were ‘around at the time’ or have validated information from friends or family. I have copies of both ‘The History of Winkleigh Airfield 1939-1995’ by Ron Cottey and ‘It’s living History, isn’t it?’ by Gillian Holman & Peter Monkcom – this latter book is full of interviews with residents of Winkleigh & Hollocombe and where possible I would like to re-interview these people relative to their stories.

There is a mountain of documents to be found and verified and all this should be kept for future generations in Winkleigh and beyond.

Therefore, if we start from the beginning, the information required could go as follows:

- Original airfield landowner(s) – documents of sale etc.

- Construction of airfield and problems thereof – original copy documents from MOD would be great (Some documents from Lin Ford coming soon).
- Images before, during and after construction of the airfield – probably available in archives somewhere (I am aware of the Jackie Freeman Winkleigh Airfield website).
- Squadrons based at Winkleigh – plenty of information, however, some of it has already been found to be incorrect.
- Missions flown by the squadrons and individual stories from crew and/or MOD records if available – there should be an awful lot of information on these – just a matter of finding the right places to look!
- Decommissioning of the airfield.
- POW's, Displaced Persons and Evacuees in the area – who were they? Are there any relatives still alive from those who stayed – I already have some information on this.

Then there is the Control Tower and the possible setting up of a Trust and Trustees to lease/buy the land if grants can be secured. Refurbishing the Control Tower and area. Ben Duncan has already done a lot of work talking to people and gaining contacts who have forwarded plans on how to go forward with this. This project alone will be massive if it starts and volunteers will be needed.

Therefore, in conclusion, this project is huge and will possibly take years to complete. I am happy to be heavily involved, however, I have a number of other projects in which I am involved – including still trying to earn a living!

**Update:** Since I posted this on Winkleigh! Facebook page a number of people have come forward and offered help and to give/lend documents relative to this project. I thank you most sincerely for this and if I have not already contacted you I will do so shortly. I have also purchased a copy of *The Military Airfields of Britain – The South West of England* by Ken Delve in which Winkleigh Airfield is of course mentioned along with photographs and diagrams of the airfield layout.

**The Airfield Control Tower:** Charlotte Russell (Heritage at Risk Projects Officer) had a ninety-minute conversation with the current owner of the Control Tower and he is still currently of the mind that he does not want to sell or lease out the property. In addition, she was led to believe that there is an ongoing legal action concerning adjoining land and rights of access to the Tower. Therefore, for the time being this part of the project will have to be held in abeyance.

There is some good news however. I have been in touch with two other people who have expressed an interest in becoming Trustees of the project, if it took off. Two of us are getting on in years but the third 'volunteer' is in his early thirties and has stated

that he will keep in touch with the situation concerning the Tower. He and his family are also long-standing residents of the area.

When the project finds itself in a position to move forward, I am in possession of detailed information concerning setting up a Trust, thanks to Brian Lane-Smith Chairman of the Board of Trustees Southwest Airfields Heritage Trust including where to apply for funding and a business model of how this type of project should be managed. I hope that when it goes forward there will still be interest from people in the village in getting involved with managing and helping with the project.

All the information and documents that I gather while investigating Winkleigh Airfield will eventually be left for the Winkleigh Society Archives as a printed copy, as well as on digital media, for future generations to enjoy and possibly use for reference.

*Greg Goldsworthy*

Email: [winkleighairfieldproject@gmail.com](mailto:winkleighairfieldproject@gmail.com)

Mobile: 07813 158568



## TEN ACRES VINEYARD CAMPSITE

- ⑩ **Free local wine deliveries** to Winkleigh and surrounding area. Fri 4 – 7pm.
- ⑩ **Guided vineyard tours & wine-tasting** From 1<sup>st</sup> May - 30<sup>th</sup> September 4.30pm every Saturday. Private group tours also available (minimum 6 people). Booking essential for all tours.
- ⑩ **Campsite and Devon Wine Shack** open 1<sup>st</sup> May - 30<sup>th</sup> September. For tents/ small campervans. Glamping tents also available. Booking essential.

Order wine and book glamping/camping online on our website.

Email/phone for vineyard tour bookings or enquiries.

**W :** [www.tenacresvineyardcamping.co.uk](http://www.tenacresvineyardcamping.co.uk) **E :** [tenacrescamping@hotmail.co.uk](mailto:tenacrescamping@hotmail.co.uk)

**T :** (01837) 83892

## Down Farm on The Farmers' Country Showdown - BBC1

In October 2020 the Farmers' Country Showdown team came to film our one-acre market garden: Down Farm. We are a small, organic market garden, tucked behind Winkleigh Airfield. We grow a full range of produce that gets eaten by our 100+ customers within 30 miles of the farm. We sell our produce through our weekly veg-box scheme, our online shop, Crediton & Exeter Farmers Market as well as through local retailers and restaurants in the summer months.



**Photo courtesy of BBC1 Productions**

The show was focused on Exeter Farmers Market so the team visited us, another local meat farm and also filmed in the hustle and bustle of the market. They spent the day with us, luckily a glorious, sunny autumn day – it is a different story on our very exposed site when the weather is less than favourable – filming our harvest for market as well as a few other odd jobs we had

to do that day; propagation, clearing summer polytunnel crops, feeding the chickens.

As the programme tells you, at Down Farm we sell our produce to keep our business running, but we are also always reinvesting. We are currently building a community barn overlooking the market garden with any of the spare profits left from Market and our veg boxes. The barn will be an outdoor kitchen with tables and a fantastic view over the garden. We are building a wood-fired oven to cook tasty pizzas (and other food) and have space to host events. With the pandemic, we have slowed the project down as it is unknown when we will be able to use the space. However, we are very excited for the time when we can welcome the community to the farm, when we can all socialise again and when our barn is finished.

If you missed it, it is available on BBC iPlayer, *Farmers' Country Showdown Episode 9*, for a year.

The pandemic really highlighted the need for small-scale producers like ourselves. Not once during the earlier stages were our (online) shelves empty as the produce either comes from our farm in Winkleigh, or direct from other local producers. We are so grateful for the support of our community helping to keep our business going as well as all the other local producers who could step up in the challenging circumstances. We started growing veg to feed our community and we are excited

to have reached that point! Please remember that our business and other local producers rely on community support, all the time, not just in difficult times.



**Photo courtesy of BBC1**

Our online shop is open Fridays – Tuesday for orders on the following Thursday. You can order bespoke orders or veg boxes. Regular veg boxes are available every Thursday and are £11/£16 for a small or a large and can be collected from the farm or home delivered for £1. To order, please call/email/visit our website.

**\*\*We have also applied to take healthy start vouchers for 2021. Please get in touch if you would like veg using the vouchers\*\*.**

*Olivia James, Down Farm Market Garden -07739892488 - [www.down-farm.com](http://www.down-farm.com)*



# DOWN FARM

*Growing food, feeding the community*

Organic produce from our farm and local suppliers.  
Online farm shop OPEN weekly  
**Friday - Tuesday** for orders on Thursdays.  
Order online or phone  
.....  
**- VEG - VEG BOXES - SALAD - HERBS - FRUIT - MILK -  
- BREAD - BUTTER - EGGS - DRY GOODS -**  
.....  
Contact farmers Olivia & Henry  
07739892488 | [www.down-farm.com](http://www.down-farm.com)  
[hello@down-farm.com](mailto:hello@down-farm.com)

## **Join the Winkleigh! Facebook Page**

Do you know about the Winkleigh! Facebook Page?

It is intended for those who live, work or have any connection with Winkleigh. To join the group all you have to do is answer a few questions to avoid any "bot" accounts joining.

## Winkleigh Fair News

Happy New Year from the Winkleigh Fair Committee! We had a great finish to 2020 with the Christmas Market in the Square on 5<sup>th</sup> December which was well attended. We had timed it just right with the “window” that was available, at the time before Xmas was effectively “cancelled”. Thanks for all your positive feedback: we hope it gave some Xmas cheer at a time when it was in short supply. A massive thank you to Alex Phillips for providing the market set-up free of charge! What a way to introduce yourself to the village.

The following help was also very much appreciated:

- Tony Aston for arranging road signs, admin and installation.
- Lorne & Alex Hamilton, who also provided their services free of charge, for setting up the market lights.
- Jamie Stewart for lending us BBQ equipment.
- Debbie Kennard for an extra pair of hands with the cooking.
- The fabulous burgers & bangers came from The Mad Butchers, and the tasty rolls from Chulmleigh Bakery.

Mind you we were not prevented by the restrictions from putting the Xmas Tree & lights up, even if we weren't able to have an official “switch on” this year. I must thank all the volunteers who helped the committee with the Xmas lights and tree. The tree was kindly donated by Winkleigh Sports Centre.

Ian Rule oversaw the installation of the lights with his invaluable experience having done this now for a few years! He also PAT-tested the lights free of charge which helped the coffers. Also mentions for Rob Baker, Colin Brown, Tom Radcliffe, Jeff Jones and Alice Turner from the parish council. Without all of you it wouldn't have happened.

None of us thought we would enter another period of lockdown in 2021, but it has given us some time to have a clear-out and tidy-up as we are sure lots of you have been doing as well. Whilst sorting through the inherited items, it gave us a reminder of how many fabulous Fairs there have been in times past and that we must endeavour to keep on going.

We are hoping that 2021 will see the return of our traditional Fair Day on 17<sup>th</sup> July 2021 and would like to think that an Easter Event of some kind could be allowed as well, to help with our usual fund-raising. We shall therefore wait until the government updates us in February with news of the pathway out of lockdown. Look out for posters in the village, updates on our notice board on the side of the village shop and on our Facebook page.

Stay safe and healthy and we look forward to seeing you soon.

*Sarah Goody - Chairperson*



## News from Winkleigh Cider



During the first lockdown, we had a little bit of extra time on our hands and decided it was the perfect time to renovate our onsite cider shop. We were able to make our shop bigger with a lot more space to sell more amazing local produce and gifts. We have the full range of Sam's Ciders in stock which you can buy (COVID permitting). We have lots of other gifts, chutneys, beers and gins.

We have plans for a pop-up pub (The Apple Shack) to open once a month. We are looking forward to being able to all have a cider together in the sun.

Our Sam's Cider Summer Festival is planned for the 14<sup>th</sup> August 2021, we had a great time in 2019 and, fingers crossed, we can go ahead this year. Please keep a look out on our Facebook page for updates.

We hope Sam's Cider tours will be running later this year when it is safe to do so. These are on every Wednesday at 2pm and allow you to walk through the cider-making process, from the traditional ways to the more modern, ending the tour in our shop where you can sample the whole range of Sam's Ciders.

Don't forget, if you are passing by along Hatherleigh Road, please look in to say hello.

*Kylie Beardon*



## Britannia 1915



I wonder how many people in Winkleigh know there is a large sea-going sailing vessel in their midst? A bit unusual in a landlocked Devon village, twenty miles from the sea. We have not been very visible this year because of Covid restrictions, but when lockdown is eased we hope to be much more involved with the community. We are planning to hold regular

maritime-themed, community fun events!

Britannia, a 105-year-old sailing ship is the last of her kind. She has been on the National Register of Historic Vessels since 1997 and her significance to the history of working sailing vessels in Britain is unquestionable. She not only represents a unique and tangible fragment of a shared past, but is also a flagship for the future of wooden sailing ships in Britain and their changing role.

Having discovered her in a state of severe disrepair, Britannia Sailing Trust was formed and has succeeded in saving her from destruction. Our mission is to:

- Restore Britannia to a seagoing state,
- Teach and pass on endangered traditional maritime skills, knowledge and techniques to the next generation,
- Inspire and engage people with maritime heritage by offering voyages that focus on these skills,
- Help disadvantaged people gain access to such opportunities and experiences,
- Campaign for cleaner seas.

Our hands-on style of preserving heritage is, we think, more valuable than a museum exhibit, or a static example of an old boat, chained to the quayside, because it:

- Keeps knowledge and skills alive,
- Gives people first-hand, life-changing experiences,
- Keeps the ship working at sea, immersed in salt water to preserve her condition.

Our aim this year is to share some of our experience with the community in Winkleigh.

We would love more people to be involved and interested in our heritage project. Our Maritime Heritage vessel is at risk if we cannot get her back in the water by 2022. We hope that when restrictions lift, our volunteers will return and maybe we can recruit a few more? Britannia now looks like a skeleton boat from a museum but she is still awesome – I doubt if many people have seen a vessel looking like this, showing her frames and construction. It's a pity that we cannot admit visitors yet. **If possible, we want to hold the first ever Britannia Day in Winkleigh on Saturday April 10<sup>th</sup> the anniversary of her launch from Friars Yard in Kings Lynn in 1915.** Later on in the year we plan to hold further fund-raising events, all of which should be fun. In June we will hold an outdoor event to celebrate Global De-Growth Day – looking to a more sustainable economic system to



protect our planet. On September 18<sup>th</sup> we would like to highlight World Clean-up Day and work in partnership with the Winkleigh Environment Group. In December our final Community Fundraiser will be to celebrate World Ocean Day. More details to follow in DW and <https://Winkleighonline.com>.

For more information, see our updates on Instagram or Facebook, with a lot more about Britannia's rich history on our website: [www.britanniasailingtrust.org](http://www.britanniasailingtrust.org)

*Or give us a ring: Vicki or Sam on 01837 680036 – we would love to hear from you.*

## **Storage containers to rent near Winkleigh**

*20 foot x 8 foot x 8 foot high*

Long or short term rentals, from £20 per week

For more details please call Julian on 07947 877284

or e-mail [julian.tolley@btinternet.com](mailto:julian.tolley@btinternet.com)

**W H T Letting**

## **Robinson Plant Ltd**

[www.robinsonplant.co.uk](http://www.robinsonplant.co.uk)

A family firm with over 30 years experience

All aspects of earthworks, groundworks and hard landscaping undertaken including:

Site Excavation and Concreting

Foundations and Driveways

Sewers, Septic Tanks and Treatment Plants

Stone Walling and Paving

Land Drainage and Ponds & Lakes

Brick Work and Block Work

Office: 01837 89065      Mobile: 07909 998945

Email: [info@robinsonplant.co.uk](mailto:info@robinsonplant.co.uk)

## Horry Mill – Rainfall Records-2020

Month	Rainfall (mm)
January	107.9
February	224.1
March	81.9
April	24.1
May	4.1
June	181
July	62
August	139.2
September	46.2
October	164.9
November	83.1
December	228.2

Horry Mill in Hollocombe is an official rainfall recording station for the Environment Agency and the table summarises the rainfall for 2020. The Environment Agency is always looking for volunteers to record rainfall.

It is quite a commitment, as they require readings to be taken every day at a set time. They provide the gauge and select the precise location, which is quite important. Currently the data is written onto special cards which are supplied each year and posted to their location in Exeter, although there are plans to move to an online system in the future to reduce costs.

We have been recording rainfall for the Agency at Horry Mill for sixteen years. You can compare the 2020 figures with those for 2019 which were published in DW 73.

*Sonia Hodgson*



# Twixtmoors

~upcyclers~

**Autentico Paint Stockist**

**Used, Upcycled and Painted Furniture**

**Reupholstering and Recovering Chairs, Sofas and Ottomans**

**Workshops and Training (at your place or ours)**

**Bespoke Commissions**

**Sandblasting and Stripping**

**Tel: 01837 83148**  
[www.facebook.com/twixtmoors](https://www.facebook.com/twixtmoors)  
[info@twixtmoors.com](mailto:info@twixtmoors.com)  
[www.twixtmoors.com](http://www.twixtmoors.com)

  
**Autentico™**  
 INSPIRING PAINTS

**Unit 2**  
**The Airfield**  
**Winkleigh EX19 8DW**  
**(on the Bedwell site)**

**Opening hours - we are here most days from 9 am til 6.30 pm**  
**Should the front roller shutter door be down, please use the first entrance on the left hand side of the building**

## Winkleigh Young Farmers Club



As spring approaches, once again YFC clubs across England are under restrictions. But it doesn't mean we are not doing anything online or out on the farms as the busy period of lambing and calving starts off.

Since the previous article, the club has bought a zoom account.

This has allowed us to still see each other's faces, holding meetings and finding activities to compete in. We have held an online zoom quiz and an online party with many other activity ideas planned. Our junior club managed to hold a Christmas Party in the Community Centre where they had a quiz and food.

**At Devon YFCs' AGM one of our member James Pearce was awarded the Veronica Ley Award for best YFC member under 21 year old in the county.**

**A few members have competed in speaking competitions. Izzy Harris joined a team in Tarka for intermediate brains trust which went to county round. James Pearce entered Tarka group round of Junior Member of the Year coming 2<sup>nd</sup> place.**

National YFC created a fundraising idea of Give it some welly for each county to exercise the distance between each club in their county which Devon decided to challenge all groups to complete 430 miles. This was then broken down to 72 miles for each club in Tarka Group.

As mentioned previously the club is planning for a COVID-secure Tractor Run; unfortunately restrictions aren't helping this idea. The event is currently in planning and will be advertised as soon as we have the go ahead, raising money for FCN (Farming Community Network).

If you would like any further information regarding the Senior Club, please contact James Pearce on 07541318077; for information regarding the Mini Club, please contact Danielle Bradford on 07544 940197. Alternatively, please take a look at our Facebook pages for updates: 'Winkleigh YFC' or 'Winkleigh Mini YFC'.

*James Pearce*

### **COVERING ALL EXCAVATIONS AND GROUNDWORKS BOTH LARGE AND SMALL PROJECTS AT COMPETITIVE PRICES**



**FULLY INSURED  
HEDGE-TRIMMING FLAIL &  
CIRCULAR SAW  
FIREWOOD PROCESSING  
CALL MARTIN ON 07817464420  
EMAIL: [PARISH@BTINTERNET.COM](mailto:PARISH@BTINTERNET.COM)  
[WWW.MPCONTRACTS.CO.UK](http://WWW.MPCONTRACTS.CO.UK)  
FACEBOOK: MARTIN PARISH  
CONTRACTING**



## Why trees are good for everyone

You may have noticed there is a lot of talk about trees at the moment. The extreme bush fires in Australia in 2020, the forest fires in California and the Amazon made attention-grabbing headlines and gripping visual images. Gradually the world is waking up to the loss of trees across the world - they, along with sea grass, are the lungs of this planet.



Approximately 13% of Great Britain is covered in trees. That is actually higher than in 1919, when it stood at only 5%, but much less than most other European countries. There is a call to double our tree cover by 2050, but previous government targets have been woefully missed.

Ancient woodland is defined as any area which has been continually forested since 1600. It is especially rich in species and ecologically important and we are fortunate to still have some within our Parish. However, only one fifth of our nation's current woodland has been around that long. The UK is ideal for tree-growth with plentiful rain, mild winters and deep soil. Our trees actually grow faster than on mainland Europe.

We have been warned by the Intergovernmental Panel on Climate Change Report (2019) that urgent and unprecedented measures are needed to keep global warming under 1.5 degrees C. So how could tree-planting help to reduce Carbon Dioxide?

Trees naturally absorb Carbon Dioxide from the air and release oxygen while they are growing. It is estimated that one tree will have absorbed one tonne of CO<sub>2</sub> by the time it reaches 40 years old. To put this into perspective, an average UK citizen is responsible for the production of an estimated 11 tonnes of CO<sub>2</sub> per year, including from imported goods.

There is a market for the 'woodland carbon units', generated by tree-planting schemes, to be sold to companies which want to offset their carbon emissions. As such, carbon trading is becoming a business in itself. This is a concern as it enables richer countries and corporations to 'export' their problem and still feel good about themselves.

When a tree dies, or is cut down, the carbon is released back into the atmosphere, slowly by decomposing or more quickly if it is burnt. If the wood is used as a heating fuel in substitute for oil or gas, that is better as it makes it effectively carbon neutral.

The benefits of woodland creation go well beyond absorbing carbon. There is medical evidence that spending time in woodland is beneficial to human health. Spending time among trees, relaxing in nature, has psychological and physical benefits on well-being. The Japanese call it *shinrin-yoku* or 'forest bathing', which means taking in the woodland atmosphere through all the senses. Trees and hedges also clean the air and can protect us from harmful particles.

Tree-planting can aid flood prevention, by reducing run-off of heavy rains and also significantly enhances biodiversity. For example, a native oak tree can provide a home for hundreds of insect species. In autumn, mammals such as squirrels, badgers and deer feed on acorns. The flower and leaf buds of English Oak are the food plants of the caterpillars of the Purple Hairstreak butterfly. Trees provide nesting sites, and nuts, seeds and berries, for birds, dormice and other mammals.

If wood is left to rot down, insects and fungi feed on them, and they enrich the soil. In a teaspoon of forest soil there are as many living organisms as there are people on this planet. A woodland or forest acts as a system in which all the parts are inter-connected by mycelia.



Scientists at the University of British Columbia, used traceable, radioactive isotopes to follow the passage of carbon from one tree to others - from a 'hub' tree to its seedlings, for example. They discovered, beneath the soil and the leaf litter, a whole existing infrastructure - a 'Wood-Wide Web' of miles of mycelia, the thread like parts of fungal roots. This relationship between trees and fungi is mutually rewarding. Through photosynthesis, the trees make sugars to send to the fungi, while the fungi are making water and minerals available to the tree's rootlets.

This knowledge can change our perspective on trees. Learning from this research, instead of clear-felling a whole area, foresters can leave the 'hub' trees allowing newly-planted saplings to grow more quickly and more healthily. They are also learning that mixed forests do better than monoculture.

Perhaps through enhanced understanding that nature works more by co-operation than by competition, we can begin to realise that the old Victorian ideas of 'nature red in tooth and claw' and 'the survival of the fittest' are not really valid.

*Kim J Melhuish - Winkleigh Environment Group*

*[Editor's Note: The illustrations are by Sue Dally: Frank Stephen's oak tree and Fly Aaric fungi in woodland.]*

## Winkleigh Church Wives Group

It is a strange feeling to be writing this report for the Church Wives Group. Usually the report at this time of the year would be writing about all our social events: Autumn Fair, December Social Afternoon and our annual January lunch at Libbaton Golf Club. However, as we all know, the past year has been like nothing we have ever known or experienced before. It seems impossible to think that our last meeting was in March 2020.

I hope that by the time that you read this you will have received at least one dose of Covid-19 Vaccine.

We can hope and pray that at some time in the future months we will be able to meet up as a group again. As we watch the days get longer and brighter, we will be able to be out and about more and enjoy that cup of tea and a chat with someone whom we may not have seen for a while.

We look forward to brighter days.

*Janet Magor (secretary)*

## Farming News – Agriculture Transition Plan

The Government's **Agricultural Transition Plan** sets out England's new agricultural policy and support measures between 2021 and 2027. New programmes will be gradually introduced.

The new package will include grants for:

Environment - Forestry - Animal Health & Welfare - Investment in Equipment & Technology - Farming in Protected Landscapes - Tree Health - Research & Development - Investment in New Slurry Stores - Supporting New Entrants & Retirees.

The flagship programme is **Environmental Land Management** comprising:

1. SUSTAINABLE FARMING INCENTIVE.
2. LOCAL NATURE RECOVERY.
3. LANDSCAPE RECOVERY.

There is to be a National Pilot of the ELM scheme this year. DEFRA will issue invitations to participate in the pilots of each of the three components.

There will also be standalone schemes to help farmers to transition.

For more details see: <https://www.devon.gov.uk/fundingnews/fund/changes-to-schemes-to-support-farms-in-england/>

*Penny Griffiths*



## Winkleigh Singers Perform Carol Service in Torrington (Despite Restrictions)



Winkleigh Singers were invited to sing at St Michael and All Angels Parish Church in Torrington for one of the very few live carol services that were possible last Christmas.

“Carols for Christmas” took place on the evening of 22<sup>nd</sup> December and was held under the strict government guidance for places of worship.

As such, eleven members of the choir and conductor covered

the whole of the sanctuary, chancel and east end of the nave, an area of forty-five square metres, performing to a maximum possible congregation of just thirty.



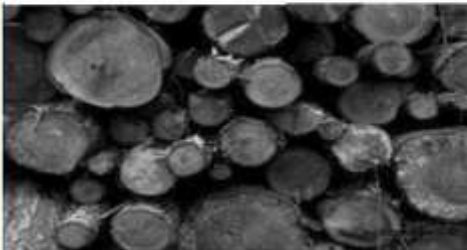
*The Winkleigh Singers*  
Registered Charity  
Number  
117123

Despite the restrictions, the audience was treated to a programme of Christmas choral pieces as well as traditional carols.

Not to be deterred, the choir are now meeting weekly on-line and preparing for a special concert to be held just as soon as restrictions allow.

For more information please contact Bish Muir on 07815880919 or email: [marketing@winkleighsingers.org.uk](mailto:marketing@winkleighsingers.org.uk)

### Local Logs



Dry seasoned hardwood  
All stored under cover & delivered in  
Chulmleigh & surrounding area.

Truck Load	£90
Double Load	£180
Trailer Load	£280
Net of Logs	£5
Net of Kindling	£5

Martin 07817 464420 [parish@btinternet.com](mailto:parish@btinternet.com)  
[www.mpocontracts.co.uk](http://www.mpocontracts.co.uk)

## Allotments Available

Winkleigh Growers are a friendly group of enthusiastic gardeners who are keen to welcome new members to our allotments close to the Sports Centre. You don't need to be experienced or very knowledgeable, just have a desire to grow food and flowers and to commit to an active hobby. Your fellow plot holders will always be happy to help!

Plot sizes are 18 metres x 6 metres (whole) and 9 metres x 6 metres (half) and cost £60 and £30 per year. There is water on site, communal wheelbarrows, regular deliveries of farmyard dung and one of our members keeps the surrounding grass and paths mown and very tidy.

In return we all sign a contract to ensure we comply with sensible and realistic rules to protect us all. In normal circumstances we love to get together occasionally to socialise, share plants and ideas, eat cake and perhaps undertake odd jobs which benefit the whole group.

**To find out more and arrange a site visit please contact:  
Catherine Knight on 07816 608819 or [cathpknight@gmail.com](mailto:cathpknight@gmail.com)**

## MTF CONTRACTING

A local experienced service for all your needs



- Agricultural Fencing
- Garden Fencing
- Flail Topping
- Tree Pruning / Tree surgery
- Wood chipping
- Ground works / Landscaping
- Fully Insured

Free no obligation quotes



Call George  
Tel: 01837 83325 or M: 0777 207 8028  
Moortown Farm, Winkleigh, EX19 8HA  
**[www.mtfcontracting.co.uk](http://www.mtfcontracting.co.uk)**

## ACE Archaeology Club

If you have been reading the other articles from ACE, you will know that we were not able to do our usual 'dig' last summer and we are not sure about this summer either. So we have used the time to concentrate on our finds. Three of us have been working in our homes on cataloguing finds but also doing small pieces of research.

Cataloguing involves filling in a spreadsheet with as much detail on each piece of pottery, or glass, or bone (animals!), or metal and, if we can, dating it. We don't have any experts on pottery, for example, but we do have an adviser who has helped a little with some of the older pieces of pot. Sometimes, fascinating though it is to know that something dates from the 11<sup>th</sup> or 12 centuries, it is often the later pieces that can set you off on a research trail.



Take the pieces pictured here as an example. As you can see some of the pieces fit together and the larger piece at the top of the picture is part of a base of something. At first, I thought it was perhaps from one of the pots used in the Victorian and early 20<sup>th</sup> century for foodstuffs, toothpaste, hair cream etc and the words were 'labels' but I couldn't find anything that fitted. Difficult when there is only one word in full.

A few days ago, I came across a group on Facebook which discusses and answers question on British pottery. The people in the group are mainly collectors of whole pieces of pottery but I joined with the explanation that they were unlikely to get any pictures of whole pieces from me. I shared the photo with them and as a result of their information I am now pretty certain what it is. They suggested that I look for Franklin maxim mugs. I was none the wiser but back to the internet. Franklin's maxims refer to Benjamin Franklin, one of the American Founding Fathers. He wrote, or compiled, a book of maxims, or improving sayings, and published it in 1758, as: 'The Way to Wealth'. The sayings, etc. had previously been published, over 25 years, in a magazine called 'Poor Richard's Almanac'. You may be familiar with some of them even now: 'Early to bed and early to rise, makes a man healthy and wealthy and wise'; 'There are no gains, without pains'.

Next, I had to find out what our mug said. Luckily, there is a free online version of 'The Way to Wealth' and I was able to do a word search through the book using the

words we had and inspired guesses. I found the following, 'Lost time is never found again; and what we call time enough, always proves little enough'.

The Franklin mugs were made around the middle of the 19<sup>th</sup> Century, 1850 to 1875 or thereabouts and they were made for children. Poor Victorian children - they were always being subjected to improving phrases.



Here is what a whole one looks like. (*Courtesy of Cowan auctions*). They were made in Staffordshire by various potteries. I do hope that we will be able to look for more of 'our' mug next summer when we start digging again. Fingers crossed!

*Erica Williamson -  
ACE Archaeology Club.*

Find us at [www.acearchaeologyclub.wordpress.com](http://www.acearchaeologyclub.wordpress.com) and on Facebook

**JOSH NOON**  
**TREE SERVICES**  
**TREE SURGERY &**  
**LOW IMPACT FORESTRY**  
**QUALITY SEASONED LOGS**  
**& KINDLING FOR SALE**



**☎ 01363 83908**  
**☎ 07792 906258**



**THE SHIFTERS**  
**Spirebourne Limited**  
Liquid Waste Disposal and Drainage Co.

**EMERGENCY CALL OUTS**

- Septic Tank/Cess Pool Emptying – Any Size
- Grease Traps
- Drain Blockage Clearance
- Various Commercial Liquid Waste Disposal
- Servicing
- CCTV Drainage Surveys
- Pump Repairs & Renewals
- Installation of Septic Tanks & Sewage
- Treatment Works
- Mantair Units

**FREEPHONE 08000 855 185**  
[spirebourne@hotmail.co.uk](mailto:spirebourne@hotmail.co.uk)  
[www.spirebourne.co.uk](http://www.spirebourne.co.uk)


## From Winkleigh Post Office Employee to Customer

It started as a family affair. I first began working at Winkleigh Post Office after leaving school in 1962. It was then located in the Square where Keenor's Estate Agents used to be and Mr Mulrairie was the Postmaster at that time. I followed my sister-in-law into the job. My father was a full-time postman and my brother did a part-time round. Back then all the postmen lived in the village.

There followed a career at the Post Office, as later I went to Heavitree in Exeter while my father continued to work at Winkleigh. My brother went on to be a mechanic at the GPO garage in Exeter. Things were changing as I got married and decimal coins were introduced. After many happy years I left because I was pregnant with my eldest daughter.

Moving on a few years, I was back again to Winkleigh Post Office working part-time. By then it had moved to the present premises, which incorporated a Draper's Shop run by Mr and Mrs Butler, who later retired. Mr Philip White took over with his wife Linda in the Gift Shop 'Notions'. After a few years there was another change when Mr Roy Towell arrived with his wife Margot running the Gift and Wool Shop in South Street.

# Adam of Eden Tree Care



A friendly, family run company aiming to provide a range of high quality arboricultural services to our customers trees.



Services include:

- Tree Removals / Dismantles
- Tree pruning, reductions, thinning, shaping and dead wood removal
- Hedge trimming
- Stump grinding
- Tree planting

All work is insured to £5million, complies with relevant British standards and is carried out by appropriately trained and equipped professional arborists

**CALL NOW** for friendly, professional advice and to arrange a **Free no obligation quote**

**TEL: 07398268877**  
**Email: [adamofedentrees@gmail.com](mailto:adamofedentrees@gmail.com)**  
**Check us out on facebook and instagram: @adamofedentrees**





*Opening of New Sorting Office - 4th March 1989. Photo: John F Sculpher, Ide, Exeter*

In 1989 a new sorting office was built to replace the old-fashioned one and officially opened by Sir Brian Nicholson, Chairman of the Post Office. Also attending on the day were Miss Emma Nicholson MP, the postmen and their wives, the Builder and officials from the Post Office, as well as the Chairman of the Parish Council Mr John Turner. Where was I? Working behind the counter, although I did enjoy the refreshments afterwards.

Mr and Mrs Towell retired in 1995 and I left as I didn't want to work with computers, which were soon to be introduced. Mr Gerald Rubythorn and his wife Fay then arrived and, while buying stamps one day, I was asked to go back to work there. I did and of course managed to use the computer which was then only used for end of day transactions and accounting. Then there was another change with the re-designing and moving of the counter to the position it was in today. The Horizon computing system was introduced to the counter and we coped with it very well (even me). I also went to North Tawton Post Office sometimes when needed. Mr and Mrs Rubythorn moved on in February 2003 and Mr and Mrs John Storey took over. I worked until August that year before being made redundant. Well it wasn't quite the end of my career because I did go to Ashreigney Post Office, which was a tiny place in the kitchen for three mornings a week later in 2003 and left in 2009.

All in all lots of changes over the years: new Post Office cards to replace the pension books, the removal of paying for TV licences, buying premium bonds and commemorative stamps to buy among other things. It was a pleasant job and a great way to meet people; happy times with lots of interesting customers and a big part of my life. Now I am just a customer.

*Marcia Butt*

# **CHILDREN'S**

# **POETRY**

# **COMPETITION**

FACE

HANDS



SPACE

**Write a short poem about**

## **"COVID, LOCKDOWN & ME"**

Age groups: 4 – 7, 8 – 11, 12 – 16

*It does not have to rhyme!*

### **THE PRIZES**

Dogberry & Finch (Okehampton) Book Tokens for each category

First prize **£20:00**    Runner up **£10:00**



*How to enter and competition rules: See next page*

**Closing date Friday 19<sup>th</sup> April**

SPONSORED BY - ***THE WINKLEIGH SOCIETY***

## **Plantlife Woodland Survey for Atlantic woodland**

Plantlife, a national plant charity, are running a project in the South West on conserving and managing Atlantic woodlands. These woodlands are full of rare and beautiful lichens and mosses. We want to understand where these woodlands are and how healthy they are, but we need your help to survey them. If you have a local woodland that you would be interested in surveying, please contact Kate Hind at [kate.hind@plantlife.org.uk](mailto:kate.hind@plantlife.org.uk).



## **POETRY COMPETITION**

### **RULES**

- 1 It must be your own work.
- 2 Your poem should be between 12 and 20 lines long.  
(Feel free to illustrate and experiment with layout)
- 3 Mark your entry with your name, d.o.b. & contact address
- 4 E-mail your entry to *penelopegriffths@gmail.com*

**OR** - Post to 52 Southernhay Winkleigh

Your name and contact details will be removed before judging

**CLOSING DATE: Friday April 16<sup>th</sup> 2021**

The winning entries will be published in **Distinctly Winkleigh**

Also displayed in the window of **Dogberry and Finch**

(Independent bookshop Okehampton)

The judge's decision is final

*The judge - Viv Girardot*

(Retired Primary School Head Teacher  
specialising in English Literature & children's writing)

Public Award ceremony to be arranged post Covid restrictions





# YOUR COMPLETE ELECTRICAL SERVICE



We have more than 28 years of experience in electrical contracting throughout Devon.

- » Rewiring
- » New consumer units
- » Minor works
- » New installations
- » Energy saving and LED
- » Fault finding
- » Emergency call outs



*We'll take care of it.*

**Call us now for a  
free estimate and advice.**

**Winkleigh - 01837 83900**

Bedwell Electrical  
The Airfield, Winkleigh  
Devon, EX19 8DW

info@bedwellelectrical.co.uk  
[www.bedwellelectrical.co.uk](http://www.bedwellelectrical.co.uk)



## Word Search

R	F	C	Q	H	Z	D	I	W	V	T	R	Q	E	J
S	E	P	T	E	M	B	E	R	P	C	Q	Z	J	I
S	Z	B	A	Y	M	D	K	B	R	Z	D	S	V	M
B	X	G	M	U	C	A	L	E	N	D	A	R	G	K
A	J	B	R	E	G	I	H	K	S	N	E	O	X	K
X	A	C	E	C	C	U	N	L	E	G	F	D	E	E
P	N	C	B	Q	W	E	S	R	I	A	W	D	D	Y
L	U	I	M	V	J	F	D	T	Y	R	I	Z	L	L
P	A	F	E	Y	U	Y	V	H	E	H	P	U	C	E
B	R	Q	V	H	N	I	U	C	S	Y	J	A	D	Q
C	Y	F	O	L	E	Z	S	R	K	T	A	R	R	U
B	L	L	N	B	C	W	D	A	F	E	U	M	Q	I
Y	O	C	T	O	B	E	R	M	F	F	T	X	J	N
U	Q	K	O	U	I	Y	R	A	U	R	B	E	F	O
E	C	I	T	S	L	O	S	T	F	T	A	N	J	X

APRIL

AUGUST

CALENDAR

DECEMBER

EQUINOX

FEBRUARY

JANUARY

JULY

JUNE

MARCH

MAY

NOVEMBER

OCTOBER

SEPTEMBER

SOLSTICE

*Solution on Page 64*



**Ladies & gents  
Hair and Beauty salon**

For all your hair and beauty requirements

A friendly and local salon

*Telephone 01837 83004  
Exeter Road, Winkleigh*

Established  
over 30 years

## Sudoku Puzzle

8					5			
	7		9				4	
		9		7	8	3	2	5
3		1		9			5	
		6				1		
	9			3		6		2
2	8	3	6	5		7		
	1				2		8	
			1					9

("Sudoku puzzles are provided by [www.sudokuoftheday.com](http://www.sudokuoftheday.com)")

Solution on Page 64

## ***Sueno Beauty***

Changes, Exeter Rd, Winkleigh EX19 8HW  
**OPEN:** Mondays 10am – 9pm Tuesday 10pm – 7pm  
 Wednesday & Thursday Evenings 6:30pm – 9pm

### ***Massage and Holistic Therapies***

- ***Swedish Massage***
- ***Hot Stone Massage***
- ***Deep Tissue Massage***
- ***Bamboo Massage***
- ***Aromatherapy Massage***
- ***Ear Candling***
- ***Pregnancy Massage***
- ***Reflexology***
- 
- ***Thai Foot Massage***

**Contact:** 07590233607      **Email:** [suenobeauty@outlook.com](mailto:suenobeauty@outlook.com)

## Puzzle Solutions

R	E	C	Q	H	Z	D	I	W	V	T	R	Q	E	J
S	E	P	T	E	M	B	E	R	P	C	Q	Z	J	I
S	Z	B	A	Y	M	D	K	B	R	Z	D	S	V	M
B	X	G	M	U	C	A	L	E	N	D	A	R	G	K
A	J	B	R	E	G	L	H	K	S	N	E	O	X	K
X	A	C	E	C	C	U	N	L	E	G	F	D	E	E
P	N	C	B	Q	W	E	S	R	I	A	W	D	D	Y
L	U	I	M	V	J	F	D	T	Y	R	L	Z	L	L
P	A	F	E	Y	U	Y	V	H	E	H	P	U	C	E
B	R	Q	V	H	N	I	U	C	S	Y	J	A	D	Q
C	Y	F	O	L	E	Z	S	R	K	T	A	R	R	U
B	L	L	N	B	C	W	D	A	F	E	U	M	Q	I
Y	O	C	T	O	B	E	R	M	F	F	T	X	J	N
U	Q	K	O	U	I	Y	R	A	U	R	B	E	F	O
E	C	I	T	S	L	O	S	T	F	T	A	N	J	X

8	3	4	2	1	5	9	6	7
5	7	2	9	6	3	8	4	1
1	6	9	4	7	8	3	2	5
3	2	1	7	9	6	4	5	8
7	5	6	8	2	4	1	9	3
4	9	8	5	3	1	6	7	2
2	8	3	6	5	9	7	1	4
9	1	7	3	4	2	5	8	6
6	4	5	1	8	7	2	3	9



### ALL SHINES WINDOW & EXTERIOR CLEANING

- WINDOWS
- GUTTERS, SOFFITS, FASCIAS
- SOLAR PANELS
- HOUSE WASH (SOFT METHOD)
- CONSERVATORIES
- ROOF DE-MOSS
- PATIOS, BRICK, PAVING, DRIVE-WAY



Tel: 01805 938502 - Mob: 07711079577

## To all Flogas Consumers in the Winkleigh Area

Most of the LPG consumers in the Winkleigh area know that we have an on-going agreement with Flogas (our supplier) to ensure that everybody pays the same rate, both bulk and metered customers. However newer residents may be unaware of how and why this agreement came about.

In 2009 in Kings Meadow it was discovered that everyone was paying different rates and standing charges, along with an added surcharge. When challenged, Flogas made numerous excuses and didn't appear to be taking the matter seriously. As a result, we contacted a TV consumer affairs program which investigated our case. The program was broadcast in 2010 and resulted in a new deal for our gas supply being negotiated. Since then Winkleigh consumers have also been allocated a dedicated Flogas manager and have a guarantee that everyone will pay the same, with all individual contracts commencing on the same date, usually 1<sup>st</sup> January.

**The current bulk rate is: 38.5 p per litre plus 13.5 p per day standing charge.**

As the most recent contract renewal was on 1<sup>st</sup> January 2021, all Winkleigh consumers should have received and signed up to a new two-year contract which has rolled over the existing tariff for a further two years. The only change this time is the introduction of a carbon offsetting scheme whereby consumers can opt to pay a small additional amount annually to offset the CO2 emissions of the energy they use.

**If you experience any difficulty in resolving a gas supply problem with Flogas through the normal channels, or have any other Flogas-related issues, please contact one of the people listed below** who are your current Winkleigh area representatives in any negotiations with Flogas. Also if you would like to volunteer to be one of the representatives, please contact us.

*Janet Hobbs - 83711*

*Collin Gibson - 680172*

*Barry Jenkins - 682909*

*Roy Cunnington - 83487*

*Godfrey Rhodes - 682982*

## What's On Diary – 2021

In view of the continuing uncertain situation, a diary of events has once again not been included in this edition. The few events that are mentioned in individual articles may be subject to change and should therefore only be regarded as provisional.

**Please consult our online diary for all updates at**  
**<https://winkleighonline.com>**

## And Finally .....

Our thanks to everyone who sent in articles for this edition, particularly those focusing on personal experiences during lockdown and those about receiving vaccinations. The major theme that is evident in the lockdown articles was how much everyone misses being able to meet friends face to face rather than remotely; particularly important for young people but affecting us all to some degree. With the coming of summer we must hope that the restrictions will be gradually eased to permit some form of normality and socialising to return to our daily lives.

You will have seen that this edition is a very full one and we thank our advertisers and contributors once again for continuing to support us in 2021. We would like to remind you that, in order to fit in articles from as many contributors as possible, each article should be no more than two DW-size (A5) pages long please.

You may have read that The Winkleigh Society is holding a Poetry Competition with three categories for young readers aged between 4 and 16 years of age. Please note that the poem doesn't have to rhyme, so you can be as inventive as you like.

We hope you find something of interest in this edition, but, if not, please send us your ideas or suggestions (or articles!) on other topics.

**The deadline for contributions to the summer edition will be NOON on Thursday 13<sup>th</sup> May 2021 for planned publication and delivery at the end of May.**

## W.D & S.J.CARNE

*Independent Family Owned  
Funeral Directors*

Established over 60 years  
Personal Attention Day and Night



**Samantha Colgrave**  
Summerhayes, Ingleigh Green,  
Winkleigh, Devon, EX19 8AT  
Email: samjcarne@outlook.com  
Tel: 01837 680199

Pre-arranged and Bespoke Funeral Plans  
Available



**HC Joinery**

Bespoke Joinery Services

**Harry Colgrave**

Joiner

All aspects of joinery work undertaken.

Doors, windows, panelling, door canopies/porches, restoration projects, repair neglected doors and windows.

hcc2010@hotmail.co.uk  
07517110668



Summerhayes, Ingleigh Green,  
Winkleigh, EX19 8AT



*John Short*

**Professional Interior & Exterior  
Painting and Decorating**

Clotworthy House, Torrington Road,  
Winkleigh, Devon, EX19 8HR

**Telephone: 01837 83709**



## **WINKLEIGH AERIALS**



**ALL INSTALLATIONS FOR FREESAT AND AERIAL  
Humax STB,s & Recorders c/w Smart Connections**

**Set-up services for new TV,s Blu Ray  
Players-Surround Sound and Sound Bars  
Appointments to suit your lifestyle.**

\*\*\*\*\* **Please call 07970-963450** \*\*\*\*\*





# Heating, Cooking & Living.

- Stoves & Fires • Flues, Chimneys & Stove Installations
- Seasoned Logs • Range Cookers • Spares & Accessories



To see one of the largest selections of stove, fires and range cookers in the South West, many of which are live and on display, visit Rangemoors. Whether you want to add warmth and atmosphere to your living space or cook up a storm in the kitchen, we have the perfect appliance for you and your home.

**Telephone 01837 680068**  
**[www.rangemoors.co.uk](http://www.rangemoors.co.uk)**

