

DISTINCTLY WINKLEIGH



Working for Winkleigh



Edition 78

Summer 2021

*Cover sponsored by
George Shacklock, MTF Contracting, Winkleigh. 01837 83325*

The Winkleigh Society Quarterly Journal



Let us help you take the stress out of family or friends coming to visit. Clotworthy, a period Georgian house close to the village centre, offers 4* Gold Award accommodation.

All rooms are large and with good views, and all have en suite facilities with free standing baths or showers.

Give us a ring for availability or send us an e-mail,

Clotworthy House Bed & Breakfast

Torrington Road, Winkleigh, Devon EX19 8HR

Telephone Susan or John Short: 01837 83709

Email: enquiries@clotworthyhouse.co.uk

Web: www.clotworthyhouse.co.uk



**Local Family Run Residential
Sales & Lettings Agent**

**Call us for a FREE
no-obligation Valuation of your Property.**

01837 83393

info@howesestates.co.uk www.howesestates.co.uk

Sell your property from 0% and no upfront fees*

*terms and conditions apply

DISTINCTLY WINKLEIGH - PUBLICATION INFORMATION

The Winkleigh Society publishes Distinctly Winkleigh quarterly at the end of February, May, August and November. Copies are delivered free of charge to all households and businesses in the Parish.

All articles submitted for publication may be subject to editing, primarily for space or layout reasons. Please email your articles to articles@distinctlywinkleigh.co.uk, or contact the Editor for delivery.

Advertisements from businesses in the local area should be emailed to adverts@distinctlywinkleigh.co.uk, or contact the Editor for delivery.

Advertising for not for profit events is free of charge.

The deadline for articles and adverts is NOON on the second THURSDAY of each publication month (February, May, August and November).

Please note that the views expressed in submitted material are not necessarily shared or endorsed by the newsletter team or The Winkleigh Society. Furthermore the Society does not recommend, or accept any responsibility for, any information, goods or services advertised in adverts or articles.

ADVERTISING RATES PER SINGLE EDITION:

Quarter-page: £12.50, Half-page: £25, Full page: £50

EDITOR: Godfrey Rhodes, Winkleigh EX19 8JP - Tel: 01837 682982

PRINTED BY: HEDGEROW PRINT, CREDITON, EX17 1ES - Tel: 01363 777595

WINKLEIGH SOCIETY COMMITTEE MEMBERS

Chair	Penny Griffiths	01837 83407
Vice Chair	Margaret Miller	01837 83398
Hon. Treasurer	Alan Mulcahy	01837 680145
Hon. Secretary	Philip Griffiths	01837 83407
Committee Members:	Alan Jacobs	Barbara Jenkins
	Royston Naylor	Godfrey Rhodes
Rachel Goldsworthy	Sue Dally	Adam Wonnacott

All residents of Winkleigh are members of The Winkleigh Society and are welcome to attend and vote at Society Meetings. Further information about the Society, as well as what is going on in Winkleigh, can be accessed online at:

<https://winkleighonline.com>



<https://facebook.com/TWSDW/>

Cover photograph for this edition by Rachel Goldsworthy

Winkleigh Society Chair's Report - May 2021



The Winkleigh Society is delighted to announce the winners of our Poetry Competition for children that we launched in the last edition of D.W.

4 - 6 Age Group

William Cotty - the only entry in this category but a most impressive one.

****First Prize****

****Second Prize****

****Highly Commended****

8 - 11 Age Group

Harrison Jordan

Gracie Goddard

Ava Curtis

12 - 16 Age Group

Esme Webb

Ava Cordern

Daniel Whetton

We had 16 entries and the Judge **Viv Giradot** was very impressed with the standard. The winners will be receiving £20, £10 and £5 book tokens purchased from **Dogberry and Finch** independent bookshop in Okehampton where the winning entries will be displayed.

All 16 poems entitled: '**Covid, Lockdown and Me**' will be put in a booklet to bear witness to the turmoil our children have gone through and give them a voice. **Unable to have a showcase public event throughout this lockdown we thought it vital to reach out with this competition.**

The winners appear in this edition of D.W. with more to follow in August.

Thanks to all our budding poets for entering, Viv Girardot for judging the entries as well as Winkleigh and Chulmleigh schools for publicising it.

In other news: we welcome Adam Wonnacott who was voted on to The Winkleigh Society Committee at our AGM in March.

Penny Griffiths
Chair: The Winkleigh Society

Winkleigh Information Directory – Update – New Entry

TAXI SERVICE	<i>Brad Cars</i>	Wayne Jeens
4 & 8 Seaters, Local or	Winkleigh	07846 389921
Long-distance, Airports	Email:	denise@bradcars.co.uk
From £2 per mile	Web:	www.bradcars.co.uk

Winkleigh Society Poetry Competition - 2021

Here are the poems submitted by the winners in each age group:

GROUP A (age 4 - 7) – Winner: ‘The Lurgy’ by William Cotty (age 4)

I don't like it!
I want it to go away.
When is it going to go away?
It needs to go away quickly,
Before it's too late!
I want to play.
Play in the parks!
Play on the big boy roller coasters!
We will have so much fun.
I will be a little bit scared,
But we will celebrate!
When the lurgy is gone.

Winkleigh POST OFFICE

~ Not just a Post Office! ~

Large range of Greetings Cards, Gift wrap & Tags

Toys & Stationery, Photocopying

Business & Private Banking

of Cheques and Cash

Laundry & Dry Cleaning

Travel Money

Car Tax

Mobile top-ups & electric key charging

Cash Withdrawals at the Counter

Open 8.30 am-5.00 pm Mon-Fri

9 am-12.30 pm Sat

01837 83427

Owner: Tony Bayley

GROUP B (age 8 - 11) – Winner: 'Covid, Lockdown & Me' by Harrison Jordan

Covid has been really tough
with the situation we are all in
some people have struggled with money
and others gone mad from being stuck in

With support and fundraisers
and much, much more
lots we have achieved
alongside people like Sir Captain Tom Moore

We are living through a big part of history
although some things we will not miss,
like wearing masks and social distancing
which will hopefully be dismissed

Everything seems to have been put on pause
but hopefully will return to what we call normal
we will overcome the problems covid has caused
although some of us will be mournful

Moving forward, the world might look different
but we should appreciate what we have and not dwell
we will be more united
and one day this will be your story to tell



MDM
MID DEVON
MOTOR CO.
Exeter Road, Winkleigh, EX19 8JJ
Tel: 01837 83334
www.middevonmotor.co.uk

GROUP C (age 12 - 16) – Winner: 'Covid, Lockdown & Me' by Esme Webb

Lonely, bored,
And nowhere to go,
Stuck at home,
And feeling low.

Getting the groceries,
Once a week,
And seeing a friend,
I can't hug in the street.

Washing my hands,
And wearing a mask,
Keeping socially distanced,
Is a really hard task.

Messaging friends,
Every day if I could,
Nothing to say,
But they understood.

Now back at school,
And seeing my friends,
Lockdown restrictions,
Are nearing the end.



Qixx

Winkleigh

01837 83229

Electrical Contractors

- Rewires, New Builds, Extensions
- Consumer Unit Upgrades
- Showers, Cookers, Heating
- Internal / External Lighting
- Sockets & Telephone points
- CCTV & Networking
- Testing & Inspection (inc PAT Testing)



The Day I Met the Duke of Edinburgh

Fifty years ago this Summer I had the memorable experience of meeting the Duke of Edinburgh at Buckingham Palace. I had been taking part in the Duke's Award Scheme. Having achieved Bronze & Silver in the Scouts I decided to go all the way to Gold through my college, Rolls Royce Technical College in Bristol.

The award scheme challenges entrants in many diverse aspects ranging from: physical fitness, community service (fire service in my case), pursuing a hobby (I chose piano), training for and taking part in an expedition in 'wild country' and attending an accredited residential course.

Having completed all the challenges my 'log book' was sent off for scrutiny and in due course I received confirmation that I had been successful in reaching the standard.

On the presentation day my (very proud) mum and I took the train from our home in Somerset to London. Making our way to the main gates of the Palace, official invitations in hand, we were ushered across the courtyard, but not before having been given instructions on etiquette from an equerry when presented to The Duke.



The ceremony took place in the ballroom. The award holders formed a line and the Duke made his way handing out the awards. When it was my turn he noticed my sailing club 'burgee' badge on my lapel, as he was a very keen yachtsman. He asked me where I sailed, "Bristol Channel sir" I replied. He said "second highest rise and fall in the World – too scary for me". He only spoke to a few awardees so I felt very privileged.

The death of The Duke of Edinburgh recently brought so many memories flooding back to me. The Award Scheme that he initiated goes from strength to strength and I can thoroughly recommend it to young people looking for a challenge.

Phil Griffiths

The Duke and the Bicycle

Around 1959/1960, my Dad – Eddie Aston – worked for the Royal Enfield Company in Redditch, Worcestershire. The company produced many things, including arms during the 1st and 2nd World Wars, but afterwards specialised in making bicycles and motorcycles.

At Christmas, Mum and Dad decided to buy my eldest brother, Martin, a bicycle from the factory. It made sense because, as an employee, Dad would receive a hefty discount.

One of his workmates told Dad that the company were displaying a number of bicycles at Earls Court in London and that one of them had been fitted with many upgrades and extras – why didn't he buy that one for Martin?

To cut a long story short, Dad agreed and paid the full discounted price from his savings to the factory buying office. He was given a receipt and the bike was his.

At this point, the story takes a twist. Unbeknown to Dad, and everyone else below senior management, it transpired that this particular bike had been promised to Prince Philip, Duke of Edinburgh, as a Christmas gift for Prince Charles, hence all of the expensive extras being fitted. It was due to be presented to the Duke at an imminent visit he was making to the factory.

Mass panic ensued within the Board of Directors when they realised what had happened and Dad was ordered to return the bike so that it could be given to the Duke and taken to Buckingham Palace.

Dad, being Dad, refused and when pressure was raised on him even further, he produced the receipt saying, "I paid for it, here is the receipt, the bike is mine and there is nothing you can do about it!" And there wasn't. The factory ended up, almost overnight, rapidly producing another cycle of identical specification which was then presented to the Duke during his visit and which Prince Charles ended up riding. My brother enjoyed riding his "very Royal" Royal Enfield bike for many years!

Some 50 years later, my wife Kay and I were proud to be invited to St James' Palace in London to be presented to The Queen and the Duke of Edinburgh.

The Queen was Patron of the company that Kay was working for at the time, which was celebrating its centenary, hence the event. We had a brief conversation with the Duke but, despite being tempted, I decided not to mention the story of the bike, although I am quite sure that he would have seen the funny side!

Tony Aston

Winkleigh Parish Church News

The last year has been a time of much change, many adaptations and not being able to do things. I think one of the things we have missed most as a church is being able to sing. Whether you are a singer who loves to reach the high notes or someone who is more content to listen to others, the absence of singing has left a hole in our worship. The use of recorded music and or organists has undoubtedly enhanced our worship and filled a bit of the hole, but it just isn't the same as hearing the sound of real, present human voices with the notes soaring to the roof beams. It isn't the same as joining in wholeheartedly to the best of our musical ability as generations have done before us.

The singing of favourite and appropriate hymns has also been lacking from funerals and weddings, times of lament and joy, normally so wonderfully captured in the inspired words of hymn writers. St Augustine wrote 'He who sings prays twice.' Singing helps us to express that which our minds struggle to put into words, it helps us to enter fully into worship and to praise God. In the Bible, the book of Psalms contains a vast array of hymns, written to express very human feelings. The Psalms range from those of joy and praise to those of lament and sorrow, the whole of human life captured for when our own words fail us. Words which even today are set to music and sung or chanted in worship and in all seasons of life.

Singing doesn't just have a place in our worship but in every aspect of our everyday lives. Scientists have shown that the health benefits of singing are significant. It releases pain reducing endorphins, increases oxygen flow and is good for our mental well-being. For some people, singing in the shower is the best way to start the day and many generations of children have been lulled to sleep by singing parents.

The words of those songs, both sacred and secular, express the experiences of our lives, the world around us and our relationships. Some mark points in history, conjure up a moment in time or simply touch our hearts. Many songs have already been composed about the pandemic or to give thanks for key workers.

As we emerge from the experiences of the last year, I wonder what songs are in our hearts? What are the emotions and experiences that are carried by those words and notes? Are they songs of sorrow and grief? Songs of joy and hope? Or a mixture of the two? Is there a song which has taken on a new meaning or is there one you are desperate to sing with others again? Whatever that song is for you, sing it out loud, alone or with others, letting the words express what our hearts cannot utter.

May we all soon delight in raising our voices in song once again.

Revd Helen Blaine

revhelenblaine@outlook.com / 01837 83710

Please Help! Church Clock and Building Fund Appeal



Those of you with a keen ear will have noticed over the last few months that the chimes on the church clock have been misbehaving! Its recent service revealed the cause of the problem to be with one of the striking hammers and this has now been removed to prevent further damage. The clock and its chimes are an important part of the heritage of Winkleigh and we know that many people appreciate hearing them.

The repair to the striking hammer is highly specialist work and will cost around **£1750** to carry out. The church receives no funding to preserve our historic Grade 1 listed building and relies on the generosity of the congregation to maintain it for the benefit of the whole village. We are therefore asking the residents of Winkleigh to help us get the clock chiming properly again and to help us maintain the church building into the future.

Donations marked as 'Clock repair/Building Fund' can be dropped into the Vicarage, by visiting <https://www.achurchnearyou.com/church/9118/> and clicking on the building fund link or by scanning the QR code:-

Please contact Collin Gibson, Treasurer, lamcrg@aol.com 01837-680172, for details of other ways you can support us.

All donations given to the building fund are used towards the maintenance and upkeep of the building only. If you are able to Gift Aid your donation please include a note with your name and address, indicating you wish Gift Aid to be claimed on your donation.



Witnesses Needed - PLEASE

I sustained a serious injury due to falling in the pothole in the public highway behind the 'King's Arms' and now face a second operation.



I need witnesses NOT to the fall but rather regarding how deep the pothole there was and for how long.

The council have now filled it in.

Please telephone me if you are willing to make and sign a very brief statement.


Thank you - Ivan (01837 682888)

Landscapes Review – the Glover Report

You may have heard that there is a new Government report on the future of landscapes, known as the Glover Report after its main author Julian Glover, formerly speech writer to the Prime Minister. This report may indeed represent the ‘new normal’ for landscape thinking after the pandemic, which has highlighted so clearly everyone’s need for landscape and cruelly exposed the inadequacies of the current divisive system. Our beaches were overwhelmed, our National Parks closed, and often our city parks also.

The media coverage of the report has concentrated on the proposal that our National Parks and our Areas of Outstanding Natural Beauty should be combined as National Landscape and administered largely from Westminster rather than locally. They should also have a clear aim towards nature conservation (which they do not at present). Local people and local media are outraged by the proposal to administer these nationally, as they were always intended to be for the nation, not for the privileged and wealthy few who can actually afford to live there (and who only rarely draw their income from the area). There were clearly serious problems of overcrowding on moorlands and beaches this last year, but the answer cannot be to stop urban people using them. A lot more education is clearly needed, although the new replacement for the Countryside Code hardly compensates for the devastating loss of outdoor education and fieldwork in our schools.

Adam of Eden Tree Care



A friendly, family run company aiming to provide a range of high quality arboricultural services to our customers trees.



Services include:

- Tree Removals / Dismantles
- Tree pruning, reductions, thinning, shaping and dead wood removal
- Hedge trimming
- Stump grinding
- Tree planting

All work is insured to £5million, complies with relevant British standards and is carried out by appropriately trained and equipped professional arborists

CALL NOW for friendly, professional advice and to arrange a **Free no obligation quote**

TEL: 07398268877
Email: adamofedentrees@gmail.com
Check us out on facebook and instagram: @adamofedentrees



In addition, the media seems to miss the most critical point of the report, which is the clear distinction between these National Landscapes (with a few additions to the current list) which must be carefully protected against 'unwanted development' and the rest of the country which will not be. The latter obviously includes Winkleigh and much of the 'Land between the Moors'. Tacitly the report accepts there will be some land run by conservationists and some by developers.

Another main emphasis in the report is to increase access to the countryside, and one is reminded again that our two local rivers, the Taw and the Torridge must be among the least accessible for the ordinary walker of any in England; also many of our footpaths remain largely inaccessible. Scots, of course, have the right to roam, except in particular circumstances. The English do not.

People in Winkleigh may be horrified that 'their' local landscape will not be given protection, or they may be pleased. They may be delighted or appalled by increased access. However, as new people move in, we will need to find a compromise between those who see the countryside as leisure ground and those who see it as potential development land. We could insist that the Transition Zone of the UNESCO North Devon Biosphere Reserve (which includes us) must be regarded as a National Landscape alongside the Areas of Outstanding Natural Beauty.

Peter Howard

Need Help In The Garden?

RHS Qualified, Experienced Gardener

All Aspects of Garden Maintenance

Planting Ideas

Year Round Reliable Service

Call Maxine on 01837 680039 or 07815 309023



Pet Home & Garden Supplies,

Unit 2, The Old Airfield Winkleigh

Tel 01837 680084

[Next to Jonesy's Cafe]

Open Tuesday — Saturday 10—3pm

Closed Sunday - Mondays

Please phone to check these times
before travelling due to current
Covid-19 restrictions

Wild Bird Foods, Peanuts, Treats, Fat
balls. Dog Foods, Cat Foods
Treats, Litters and Bedding. For the
Home, Toiletries, Cookware, Bin
Liners,

Cleaning Products, Plastic Ware and
Stationery. For the Garden, Compost,
Wood Chip,

Top Soil, Fence care, Hose fittings,
Plant Foods and Pest Control.
Paints, D. I. Y., Brushes and Rollers.

Coal and Solid Fuel

We look forward to seeing you.

Stay Safe.

Tel 01837 680084

Winkleigh YFC

Since the last article, COVID restrictions have eased for both the public and Young Farmers Clubs.

The Club has managed to meet up and play a couple of rounders games one very cold evening. This was the first time many of us had met in person since the whole pandemic had started. However, this was only a temporary easing of restrictions as YFCs are now back to online activities. We have all started to get bored of Zoom meetings now, trying to keep the internet working for long enough. We have been busy planning for future events and activities ready for when restriction ease, further ensuring the YFC spirit stays alive.

Our tractor run has been booked for the 18th September 2021 starting on Winkleigh Airfield. We are organising this event jointly with Bow YFC. The tractor run is in memory of Matt Vanstone, raising money for FCN (Farming Community Network) and the two Young Farmers Clubs.



Devon YFC has held an online show and sale for members to show off their livestock which a few members got involved in. The next big county event is Devon County Show where members can show off their talent in all the various entries.

If you would like any further information regarding the Senior Club, please contact James Pearce on 07541318077 or for information regarding the Mini Club, please contact Danielle Bradford on 07544 940197.

Alternatively, please take a look at our Facebook pages for updates: 'Winkleigh YFC' or 'Winkleigh Mini YFC'.

James Pearce

JOSH NOON
TREE SERVICES
TREE SURGERY &
LOW IMPACT FORESTRY
QUALITY SEASONED LOGS
& KINDLING FOR SALE



 **01363 83908**
 **07792 906258**

Winkleigh Village Hall

Spring has finally arrived and the pandemic, thankfully, appears to be more under control with a hint of normality returning to everyday life.

Ongoing Works: The renovation and redecoration of the Hall is continuing apace. At the time of writing, the old kitchen has been removed and a brand new, modern facility is being installed with a bar area being introduced into the rear meeting room. The Committee is extremely grateful to local professionals **Carl Beer – kitchen and bar installer; Tim Rhodes – electrics and Rob Knight – plumbing**, for all of the work they have carried out, and are carrying out, in modernising the hall. Kay, Julie, and Ros have been busy scouring IKEA and the like for new bathroom and kitchenware. Collin has once again exceeded expectations in securing various grants without which it would have been financially impossible for the present work to be carried out. It is anticipated that the works will be completed in early to mid-June.

The Hall Committee is planning to hold a Grand Opening on Saturday 31st July to which all residents will be able to call in between 3 pm and 6 pm. Planning is in progress so keep an eye on announcements for full details.

Monthly Market: The monthly market re-opened on 1st May and it was good to see so many local people once more. We are looking for more stallholders who might be able to offer local produce. The market is held on the first Saturday of each month between 10 am and 12 noon. If anyone is interested in having a stall, please contact the market manager, **Kay Aston, on 07946 490967 or kaytonyaston@gmail.com**. Those who visited in May will have seen the advertising facility we employed on the large video screen during the morning. We are happy to advertise market stalls free of charge. Local businesses are also welcome to enquire about advertising by contacting Kay if they think commercial advertising might be an option.

Tea, coffee, and cakes will be available each month in the back meeting room after the cessation of Covid restrictions which is currently scheduled for 21st June. The first market to benefit from this will therefore be the one planned for 3rd July when we will look forward to serving you with refreshments and home-made cakes provided by the Hall Committee. If you are interested in providing refreshments on behalf of your organisation for any other future market dates, please contact Kay on the number above.

Village Hall Markets for the rest of 2021 will be on the first Saturday of each month from 10 am to 12 noon. Refreshments will be available from 3rd July (by Hall Committee) onwards (subject to relaxation of Covid restrictions). The December date is to be confirmed.

Diary date - Quiz Night: Friday 16th July in support of the Winkleigh Fair that week, we will be holding a Quiz and Pudding event in the main hall at 7 pm.

Tony Aston

**COME TO THE THEATRE AT THE REFURBISHED
WINKLEIGH VILLAGE HALL IN SEPTEMBER TO SEE
*"THE GREAT BRITISH SEASIDE SHOW"***

In partnership with the same studios that brought you the D-Day Darlings and "Hooray for Hollywood", Tony and Kay Aston present "The Great British Seaside Show" at **7.30 pm on Saturday 4th September**.

Join in with an evening of song, dance and entertainment with the George Formby Experience, comedian Gary T Thompson and one of your favourite D-Day Darling girls.

Based on the classic end of the pier variety show, you will be taken on a nostalgic trip to the British seaside of the '50s and '60s.

This is the perfect opportunity to finally rid ourselves of those Covid blues.

It will be very popular so book your place with Tony and Kay on 07946 490967 or tonyaston1953@gmail.com

**** Adults: £15 U16: £7.50 ****

No quibble refund if cancelled by Covid

MTF CONTRACTING

A local experienced service for all your needs



- Agricultural Fencing
 - Garden Fencing
 - Flail Topping
 - Tree Pruning / Tree surgery
 - Wood chipping
 - Ground works / Landscaping
 - Fully Insured
- Free no obligation quotes



Call George
Tel: 01837 83325 or M: 0777 207 8028
Moortown Farm, Winkleigh, EX19 8HA
www.mtfcontracting.co.uk

Winkleigh Village Hall
7.30pm Saturday 4th September 2021

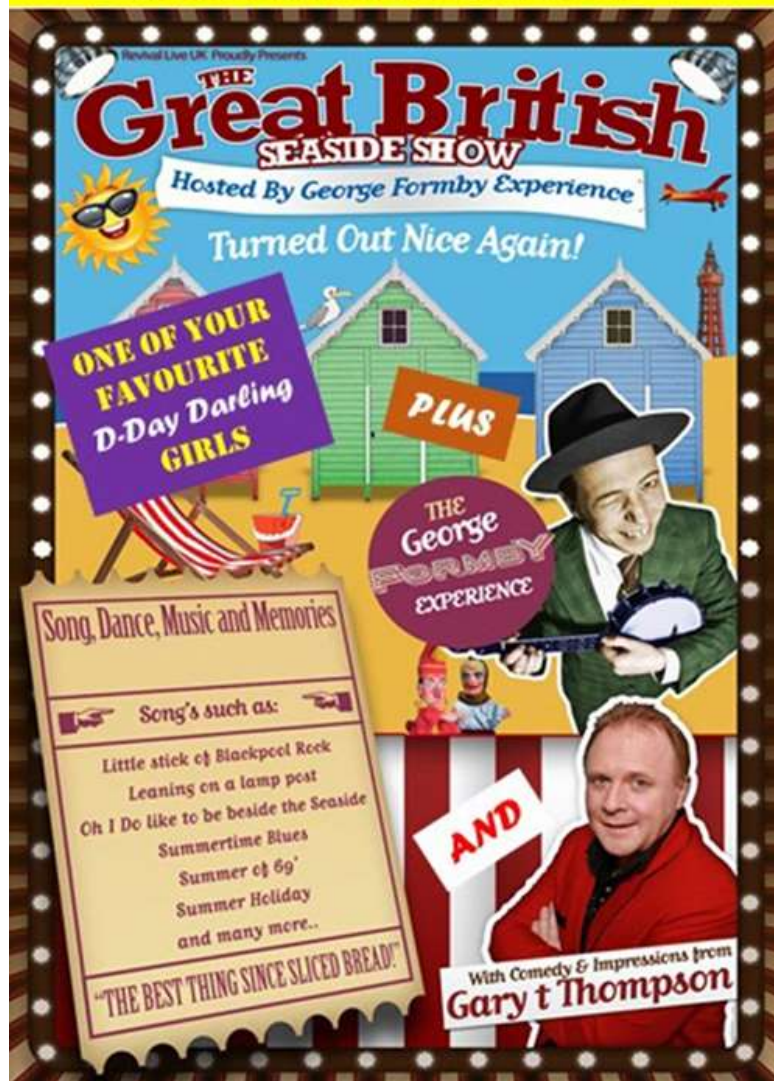
Adults £15 u16 £7.50

Tickets from Tony and Kay Aston

01837 83248 07946 490967

tonyaston1953@gmail.com

NO QUIBBLE REFUND IF COVID CANCELLED



Winkleigh now, tomorrow and building on its deep past: taking responsibility for our place and our community, maybe

In the mid-nineties, I think I am right in saying, Winkleigh had about 750 people within the Parish boundary, which includes Hollocombe and a number of small settlements. Now we are roughly twice that many. In passing, we have got back to the population size Winkleigh had in the mid-19th century.

I came to Winkleigh in 1998. At that time, there was a new flurry of building, Kings Meadow was I think, complete, or almost, and the development south of the village, by Millwood, was well under way. Since then Elms Meadow has been added and several smaller developments have been 'in-filled'.

When I arrived, I joined everything – almost – so that I could understand, as quickly as I could manage, the community I had been privileged to find myself in. Joan, (my late wife), and I were made immediately welcome, not least by the then inhabitants of Vine Street, where we settled.

Now only one other household remains the same in our small street, since my dear neighbour, Terry Davey, died a short while back. It has been, over those 20 years, a time of considerable change, in the world outside Winkleigh and of course within, too!

When I first sat, as a member of the public, in the 'public gallery' of Winkleigh Parish Council, just to find out what they did, I learned that the Council had had difficulty in filling more than 8 seats out of the 11 that it was supposed to have: and some of the established councillors had had to co-opt to fill the 3 empty seats. It might have been the case that going out into the "highways and byways", they had commandeered friends and family to help. A Parish Council is legally able to do almost anything legal, as long as it can come up with the ideas, take people with it and raise the necessary funds to carry it out. It needs above all **the wish and the capacity to do so**.

- | | |
|---|--|
| <ul style="list-style-type: none">• Family History Research• Birth Marriage & Death Certificates and also Wills can be supplied• Missing Persons and Vehicle Registrations researched for Devon• Free quotes | <ul style="list-style-type: none">• Please contact:• Tel: 07930430250• Derick Skelly• Flat 5, Moorland Heights,• Exeter Road,• Winkleigh EX19 8HW• Est 1986 <p><i>Email: derick.skelly@yahoo.co.uk</i></p> <p>Contact: https://derickskelly.wixsite.com/familyhistoryindevon</p> |
|---|--|

A parish council does three kinds of things, usually:

1. Provision: It provides some local services, such as the cemetery, seats throughout the village, waste and dog-bins, local *additional* street-cleaning, etc; and makes sure that the other agencies, who have a role in this, are doing their job, e.g. roads, via the Highways authorities.
2. Planning, meaning development control: it is concerned with representing *the interests of the community as a whole* (as opposed to the *individual* interests of land or property owners), when planning applications are being considered by Torridge District Council, who are our planning authority.
3. With a view to the future, the longer term, it makes, in cooperation with the community as a whole, a periodic multi-year plan, now called a **Neighbourhood Plan**, to give direction and incorporate values, which the community has, for its future development.

The working of the Parish Council: At the present time, once again, the Parish Council has had continuing difficulty in keeping all eleven seats filled. It is important from the point of view of those who have offered themselves for the Parish Council seats that there are eleven councillors, so that the important work of the Council is shared between folk who volunteer their time and skill: they are **not paid**. We, as a community, let down these volunteers if we do not vote for them, because it is our

vote that gives individual councillors a sense that they are valued and that it is worth their while to work for Winkleigh, but...

...if there are less than 12 candidates, there is no election, so no mandate. If there are 11 or less candidates, they are simply declared elected! Not real democracy. Not us taking responsibility.

Our attitude is plain when this is the case: **WE TAKE THEIR EFFORTS FOR GRANTED!**

In a village where the community is made up of "local" people, who have lived here or settled here to work, but also of incomers like myself who have come to 'retire', it is essential that what is done by the Parish Council somehow brings together the various interests of all. Thus it needs to have within its

Fiona's Café & Farm Shop

Call in for breakfast,
morning coffee & cake,
lunches and afternoon tea

Menu varies daily

Inside or outside seating

Plus

Shop for home-made and
fresh produce, fish and
frozen ready meals

Open from 10 am on
Tuesday to Saturday

ranks, a representation which can help that balancing or combining act. Local people represent what the community is, in terms of place, past and the values which it holds dear about quality of life. "Incomers" bring fresh ideas, experience of the wider world, and if they are "retired", the time and energy to contribute to community life. The Parish Council needs to find:

- within itself the kind of leadership to bring all this together
- the talent for running services well and economically
- the capacity to work for the longer term and link up with other agencies and sources of support. This by the way means the capacity to get out and speak directly to the individuals in the agencies, **in person**: the District Council, the County Council, our neighbouring villages, and other useful bodies or individuals.

One of the things that can cause great frustration to individual councillors, or sub-groups, who have hit upon an idea which they feel is for the good of the community, is the sometimes painstaking business that has to be done, not least in an elected body, to take people with them in pursuing and executing their idea. During my own time on the Council, we lost more than one person with considerable energy and talent, when they stood down from their position on the Council because this frustrating feature of democracy was something that was not for them.

The Clerk to the Council has among other things the duty to represent to the Council as a body the requirements that procedures established to prevent malpractice are being followed, and where proper guidelines and legal boundaries which are there to protect democracy, are at risk of being crossed. The Clerk, the only paid officer of the Council, can easily end up being the repository for the frustrations of well-

i Clean Devon Window Cleaning

WINDOW CLEANING, GUTTER CLEARANCE & CLEANING, FACIAS, SOFFITS & CONSERVATORIES.

Call Paul @ 07514 – 740712 for a no obligation quote.

Email paul@icleandevon.co.uk



[WWW.FACEBOOK.CO/ICLEANDEVON.CO.UK](https://www.facebook.co/icleandevon.co.uk)

Covering Winkleigh/ Chumleigh/ Dolton/ Roborough/ Hatherleigh & surrounding villages.

meaning innovators. This in particular places great demands on all concerned, not least the leadership capacity of the council as a whole.

Dear friends, let us support our Parish Council:

- **First by providing sufficient candidates – in our case 12 – so that an election will be required AT THE NEXT OPPORTUNITY.**
- **By taking the time to vote, so that our councillors feel mandated/supported.**
- **And by collaborating with them, when there is work to be done for our community**

LET US COME ON DOWN! ... AND RISE TO OUR OCCASION

Peter Stutt

Notice of the Death of Jenny Miles



Dear Editor, I have been asked by the Knapman family to notify the people in Winkleigh of the death of Fiona's mother Jenny Miles. Ed and Fiona Knapman and their four girls, who formerly lived at Stabdon Farm, emigrated to Tasmania several years ago. Fiona's mother Jenny Miles followed them from her home in Winkleigh.

The family would like everyone in Winkleigh to know that Jenny passed peacefully away at Burnie Hospital on Friday 30th April at 1.30 am surrounded by her family.

Christine Chandler

Robinson Plant Ltd

www.robinsonplant.co.uk

A family firm with over 30 years experience

All aspects of earthworks, groundworks and hard landscaping undertaken including:

Site Excavation and Concreting

Foundations and Driveways

Sewers, Septic Tanks and Treatment Plants

Stone Walling and Paving

Land Drainage and Ponds & Lakes

Brick Work and Block Work

Office: 01837 89065 Mobile: 07909 998945

Email: info@robinsonplant.co.uk

Why I fell in love with the Ring O' Bells by Bill Penney

I don't suppose you know just what a genuine, dyed-in-the-wool Ye Olde Inn means to an Australian. We're a thirsty lot Down Under. And we think there is nothing more typical of England than one of those rambling English pubs — thatched roof, low ceilings, dark oak beams, and a winding stair-case worn by the footsteps of 400 years. That's why my wife - I call her Penny - and I fell for the Ring O' Bells as soon as we saw it. The rays of the evening sun, slanting across the green fields, bathed it in a warm glow. We could scarcely believe our good luck. Brown-thatched roof, tiny windows and cream walls - just as we'd dreamed about them.

Blue smoke curled up to the ceiling of the cosy bar. Glasses clinked. Darts thrown by expert work-worn hands "thunked" into the dartboard. Skittles clattered off their perch in the snuggerly, and all the rooms buzzed with murmured gossip of men who earn their living close to the soil; country talk that was much the same in 1850, 1750 and 1650 as it is to-day. So Penny and I looked at each other and said "This is the place for us". That was how, at the age of 48, I became the landlord of an English Inn. It was a big change for Penny and me. We had just come from the steaming jungles of New Guinea, where we had made a bit of money out of a couple of trade stores until the climate got us down. We had decided while we were in England, that we ought to put our money into some sort of business - preferably into a typical English pub. We never regretted sinking it in the Ring O' Bells.

RUNNING A PUB IS A LOT OF FUN AND, OF COURSE, THERE'S THE GREAT JOY OF BEING YOUR OWN BOSS.

There are one or two problems too. The biggest is getting to know your customers. In the old-world villages, where time has wrought few changes, they tend to look on



strangers with a bit of suspicion. But we soon persuaded them to accept us. That, at least, is what the till says. The takings have nearly doubled since we took over almost two years ago. Also a lot of our regulars bring us gifts from time to time — a pot of cream, a jar of honey, a basket of strawberries, vegetables - so I guess they like us all right. We have tried to do our best for them as well. We have made a lot of improvements to the pub—put carpets on the worn stone floors, brightened up the bar with some of that wonderful old English brass and copperware and installed a TV in the lounge. The TV is probably our big success. It's a great attraction for the teenagers in the village. They come in for a couple of hours every evening - and drink a lot of soft drinks while they're looking in. It has been a big hit with the men, too. Whenever there's a good fight or soccer match on, we have standing room only. I have even learned to play darts since I came here. I worked hard at it - and now would back myself against any of my "regulars".

We have a team that travels around playing friendlies. And since I started playing myself, I've never lost a match to another landlord. How's that for an Aussie?

Now I'm collaborating with one of your champions in a book about the game. And that brings me to another advantage in being boss of your own pub - you have plenty of time between bar hours to do the things you want to do.

Yes, it has been a wonderful experience. The men of the English countryside are worth getting to know – hard workers who like a drink, say what they think, and take a man on his merits.

NOW I'M GIVING IT ALL UP—BUT ONLY BECAUSE I'M A BIT HOMESICK FOR AUSTRALIA. I KNOW I'M GOING TO MISS THE RING O' BELLS.

The chimes of the 12th- century village church clock, the darts matches, the friendly "Good evening, Bill" of those warm country voices.

I'LL BE THINKING OF THEM WHEN WE'RE ON OUR SHIP FOR SYDNEY - AND FOR A LONG TIME AFTER WE GET THERE. Yes I'll miss it all!

Reprinted from Winkleigh Society Archives



**When you need
advice we have
the solution**

**Call our Crediton office
01363 77 55 66**
Manor Office, North Street, Crediton EX17 2BR

Other offices at Exeter, Okehampton,
Budleigh Salterton, Ottery St Mary and Sidmouth

Visit gilbertstephens.co.uk for more information
Gilbert Stephens LLP is authorised and regulated by the Solicitors Regulation Authority (no: 536070)

Winkleigh FC v. West Exe May 1st 2021
showing a huge fight back to come back from the brink!

Winkleigh went in at half-time 3-0 down. The first half score line was a disaster for Winkleigh with West Exe having taken their chances and scored when Winkleigh did not. Winkleigh missed a penalty and received a contentious off-side decision which could have given the half-time score line a different look.



A decisive half-time talk on their errors of the first half resulted in Winkleigh coming back on the pitch with a positive attitude.

The second half kicked off and Winkleigh instantly took control with two goals from captain Rob Knight. With Winkleigh still dominating the game, West Exe replied with a rocket of a shot that put them 4-2 in the lead.

With an enhanced attitude and self-belief Winkleigh did not seem fazed at all and young Freddie Finch scored with a 40 yard shot that nestled in the top corner of the net. Winkleigh continued with the pressure and in the 77th minute Fraser Reeves scored to even the things up at 4-4. Winkleigh's final goal brought the score to 5-4 but was at a cost with captain Rob Knight receiving an injury during a mid-air collision resulting in him having to go to hospital. Luckily it was nothing too serious.

A good and impressive match by both teams with Winkleigh eventually winning the game.

Match Report: Tom Robinson
Images: Greg Goldsworthy



Neighbourhood Plan News - It's Referendum Time!

Save the date: 17th June 2021

Frequently Asked Questions:

What is the Neighbourhood Plan and how has it been made? The Plan is the culmination of 4 years of hard work. Information about the Plan as well as all the background papers can be found on the Parish Council website.

Where can I see a copy? You can see a printed copy by contacting Cllr Angela Findlay (phone: 682616) or Penny Griffiths (phone: 83407). There is an electronic version on the WPC website. There will be copies to see and a chance to discuss the Plan at the June monthly market in the Village Hall.

What is the referendum? If the Parish votes with a majority approving the Plan, it will have legal force. TDC will then be obliged to take it into account alongside the Local Plan.

Can it stop future development? No, this is beyond the Government guidance that the Plan has to work to. However, it can influence and guide it to the benefit of the Parish and make clear what the Parish wants.

How?

- By protecting our locally unique natural and built environment and making sure it is taken into account
- By influencing the design and location of new housing to produce good places to live
- By encouraging new business to locate
- Making clear traffic and parking priorities
- Making clear what financial contributions developers should make.

What difference will the plan make? Are we stronger with a plan or without? The Government is making the planning system more liberal, not less. Parishes need a stronger voice. The plan is already being used by WPC and others to respond to planning applications – see the Torridge District Council (TDC) planning application portal for some examples with reference to the Townsend Hill development. The plan is for everyone to use – so make sure your voice counts by quoting it and give your planning objections teeth!

BRING THE PLAN INTO LEGAL FORCE BY VOTING YES ON 17 JUNE.

Pauline Warner

It's not all about Paint

Since setting up business in Winkleigh 9 years ago, **Twixtmoors Upcyclers** have operated from their workshops on the Bedwell Site upcycling furniture and undertaking kitchen makeovers.

After obtaining an agreement with Autentico Paints to sell their products **Twixtmoors Upcyclers** established an eBay store to attract UK wide customers. With over 10,000 successful sales, they quickly became the largest distributor of Autentico paints on eBay and expanded their on-line presence to Amazon, Etsy and via their own website (www.twixtmoors.com). Then came lockdown!

Getting paint from any manufacturer became impossible. Being hoarders, **Twixtmoors Upcyclers** had a substantial quantity of new un-tinted base paint in storage but had no way of colouring them. They took the plunge and purchased a New Corob Tinting System and **Twixtmoors Paints** was born.

The next few months saw **Twixtmoors Paints** mixing and tinting paints 16 hours a day, day in day out. Such was the shortage of paint, they even started to repurpose left over paint, filtering and re-tinting to darker colours.

As the first lockdown eased, **Twixtmoors Paints** were approached by several paint and decorative products manufacturers. Some of these discussions are still on-going but to date, they have agreed to be distributors for **Crown Trade Paint** and **Polyvine Decorative Products**.

This does not mean that the Upcycling side of the business has stopped, far from it. **Twixtmoors Upcyclers** is still taking in furniture upcycling commissions and have partnered up with professional painters and decorators to be able to satisfy the demand in Kitchen Makeovers and other Interior Design Projects.

IT'S NOT ALL ABOUT PAINT - it's also about the journey! Start your journey here and book a **FREE COLOUR CONSULTATION** for your next project. Phone Lorie on 07443 653157.

**COVERING ALL EXCAVATIONS AND GROUNDWORKS
BOTH LARGE AND SMALL PROJECTS AT COMPETITIVE PRICES**



**FULLY INSURED
HEDGE-TRIMMING FLAIL &
CIRCULAR SAW
FIREWOOD PROCESSING
CALL MARTIN ON 07817464420
EMAIL: PARISH@BTINTERNET.COM
WWW.MPCONTRACTS.CO.UK
FACEBOOK: MARTIN PARISH
CONTRACTING**

**CLEAN
EXTREME**



UNBEATABLE COVERAGE

**CROWN
TRADE**



**CLEAN EXTREME
MOULD RESISTING**

Ideal for kitchens
and bathrooms

**CLEAN EXTREME
STAIN RESISTANT**

Ideal for high
traffic areas

**CLEAN EXTREME
ANTI BACTERIAL**

Ideal for hospitals &
healthcare facilities

To find out more visit
crowntrade.co.uk

It's not just paint.
It's personal.

IN ANY SPACE... STAINS LEAVE NO TRACE

**WE ARE PLEASED TO ANNOUNCE WE HAVE NOW HAD
OUR **CROWN TRADE** STATE OF THE ART PAINT MIXING
SYSTEM INSTALLED, COMPLETE WITH SPECTROMETER**

**WE CAN MIX ANY COLOUR FROM THE CROWN TRADE
COLOUR RANGE, MATCH ANY COLOUR FROM A SAMPLE,
AND EVEN TINT COLOURS FROM RAL CODES**

TRADE ENQUIRIES WELCOME

Twixtmoors Paints

**Unit 2, Bedwells
The Airfield, Winkleigh
EX19 8DW**

BUY ONLINE: WWW.TWIXTMOORS.COM

ORDER BY PHONE: 07443 653157

ORDER BY EMAIL: INFO@TWIXTMOORS.COM

**COLLECT SAME DAY and LOCAL DELIVERY AVAILABLE
FREE COLOUR PLANNING CONSULTATION**

**THE
FASTFLOW
FOUR**



**BREATHEASY*
FORMULATION**



**ADVANCED
WATER BASED
TECHNOLOGY**

**CROWN
TRADE**

To find out more visit
crowntrade.co.uk



**EXCELLENT
FLOW**



**INTERIOR &
EXTERIOR USE**

It's not just paint.
It's personal.

From our District Councillor



With our County Council and Police & Crime Commissioner elections behind us we can now return to concentrating on the local issues that affect our daily lives and Winkleigh has a particularly important one coming up.....

After a huge amount of detailed work lasting several years by a dedicated team from the village, Winkleigh is now in the very advantageous position of having its own Neighbourhood Plan that together with the Torridge & North Devon Local Plan will define what sort of a place Winkleigh and Hollocombe should be in the future. The Planning Policy Team at Torridge District Council have praised the Winkleigh Neighbourhood Plan team for their work and have described the Plan as “best practice” and one that will be of direct benefit to residents.

The Plan covers all aspects of the local area from the environment and wildlife to planning and future development. Once ratified, the requirements of the Neighbourhood Plan will have to be included in all future planning applications so this is an essential document for all the residents of Winkleigh and Hollocombe. Not only will it influence the places in which you live but its impact on the local area will affect the future value of property and land prices. Copies of the plan (glossy booklet) have been available throughout the village and I urge you to read it.



**General Building Works
Period & Listed Building Renovations
Maintenance & Repairs**

For a free, no obligation estimate, please call:

01837 83890 • 07541 002017

info@obcd.co.uk www.obcd.co.uk

To complete the legal ratification process the Plan has to be agreed via a local referendum and this will take place on Thursday 17th June – it is being advertised through flyers, posters and on the Winkleigh Parish Council website but still many residents are not aware of it so please make sure that your friends and neighbours know about it. The referendum will be held in the Community Centre on the 17th and so I encourage you all to find out more about this important local policy and then cast your preference in the referendum.

Lastly I would like to plug the Transitions Project Community Wellbeing Fair that is going to be held in Winkleigh Community Centre on Tuesday 29th June 2021, between 4 & 7 pm. Transitions is a partnership between the Wisermoney charities (Navigate CIC and Encompass Southwest) and West Devon CVS. They are funded by the National Lottery Community Partnership Fund and provide free confidential debt and money advice, money and budgeting courses, and run community events to build more resilient communities. Their aim is to reduce social isolation and improve financial wellbeing, working with people often isolated from mainstream services as well as serving the rural communities of West Devon and Torridge.

For more information or to book a space in the Centre, please contact Billie Burnett of West Devon CVS at volunteering@westdevoncvcs.org.uk or ring 07704 155984.

As always, feel free to contact me direct if you think I can be of assistance and I will always do my best to make sure your voice is heard.

Cllr Simon Newton

Tel: 07943 830220 or email: councillor.newton@torridge.gov.uk

Jenny Rock

Rock Solid Book-keeping Solutions
Creating order from Chaos!

Collacott Lodge,
Winkleigh,
Devon EX19 8LE

Mobile: 07743 683 756

Email: rocksolidbookkeeping18@gmail.com

Book-keeping, Bank reconciliations, Creditor & Debtor Reports.
VAT Returns, Accounts to Trial Balance, Liaise with Accountants.
Temporary, 'One-Off' and Permanent Contracts undertaken.
Friendly, helpful advice for small businesses.

CIMA Advanced Diploma in Management Accounting.
Association of Accounting Technicians NVQ IV.

Winkleigh Parish Council - Chair's Annual Report 2020/21

Time seems to have flown by since I was first elected as Chair to the Council back in January 2017. Now a little over 4 years later it is time for me to write and present my last Chair's Annual report; I have every intention of keeping it as short as possible but if anyone has any questions about the workings of the council either general or specific, please contact our Clerk Mrs Melanie Bickell on 01837 89095 or by email: winkleighpc1@btconnect.com Her office hours are: Mon & Thurs 10-3 & Wed flexible.

Finance: During the 2020-21 financial year the Council have approved the following grants which will be paid to the recipients once we are in receipt of the 1st instalment of the Precept:

- £318 to the Parochial Church Council towards the cost of maintenance of the Clock.
- £500 to Okehampton District Community transport group (O.D.C.T.G) towards the continuation of their current services including the Ring and Ride bus service, voluntary car service and wheelchair accessible transport.
- £2000 to the Village Hall committee towards the cost of their ongoing refurbishment project.
- £300 to the North Devon Records Office towards their running costs, the ND Records Office houses many of the Parish Council records which can be viewed by contacting the records office <https://swheritage.org.uk/devonarchives/visit/north-devon-records-office/>
- £75 to the Royal British Legion for wreaths to commemorate Remembrance Day.

The Parish Council are within budget for 2020/21. The overspend on running costs is due to higher than predicted street cleaning costs and a rise in electricity costs during the year, which is offset by underspend on other budget heads.

The General reserve is £7171.96 held in the reserves account, and a working balance of £3897.58 in the current account (which includes the £1735.15 business rates refund), to pay for April 2021 bills/subscriptions prior to receipt of the precept which normally is received end of April.

Winkleigh's Neighbourhood Plan: The group have been working hard behind the scenes to get the final version of the Neighbourhood Plan ready and submitted to Torridge District Council. Following some minor adjustments, TDC agreed that the plan was ready for referendum; unfortunately this had to be postponed from last year due to the Covid-19 pandemic. However, a date has now been set and residents

of the Parish will have the chance to vote for or against the adoption of the Winkleigh Neighbourhood Plan as a statutory planning document on Thursday 17th June 2021, so keep an eye out for your polling cards which will give you all the information you need in order to be able to cast your vote. If at least 51% of those who vote say 'yes' Winkleigh will be able to formally adopt the plan.

The Final Neighbourhood Plan Document can be viewed by either visiting:

http://www.winkleighpc.org.uk/Neighbourhood_Plan_31569.aspx or

<http://site9505718.92.gfivedesign.co.uk/>

Thanks to all those who are or have been part of the Neighbourhood Plan Group for their work on behalf of the Parish.

Covid-19 Support: During the pandemic the Council has been lucky enough to secure a significant amount of grant funding and donations from various sources to enable the Council to set up its Covid-19 Support Group, which has been an enormous help to many in the Parish since March 2020 with tasks such as grocery shopping and prescription collections being carried out by a group of volunteers, to whom we are extremely thankful. This service has been Co-ordinated by Cllr Angela Findley with support from the Clerk, Melanie Bickell, and I would personally like to thank them both for all their hard work and time in making this service such a success.

The Council's "Email Me" list: For those of you who are not aware, the council has an "email me" list which the clerk sends out with links to information that might be of use or interest to parishioners i.e. Council minutes, agendas, road works notices, etc. Please email winkleighpc1@btconnect.com for more information or to sign up to this list.

Finally: I would like to extend my thanks to County Cllr Andrew Saywell for championing the repairs to the roads around Winkleigh and Hollocombe, amongst other projects. Also to District Cllr Simon Newton for providing the Parish Council with an invaluable link with TDC especially on Planning matters.

Thank you to all the parishioners who have attend our Zoom meetings, these meetings have on occasion been a technical challenge for some Parishioners and Councillors alike so I would like to thank all of those who have managed to join our meetings and we look forward to resuming our face-to face meetings in a Covid safe way as soon as possible.

I would like to conclude with my personal thanks to all Cllrs who have served during this past year and our Clerk, Melanie Bickell, for the time and effort that has been put into council business thereby helping to keep the Parish Council functioning during the challenges of the last year.

*Cllr Alice Turner
Chair, Winkleigh Parish Council, May 2021*

Winkleigh War Memorial Recreational Field Fund (WWMRFF) incorporating the Sports Centre

This brief report is a classic case of a curate's egg.

Of course everyone is looking forward to the return of all the things that we hold dear in our lovely village. The Trustees are no different in this regard.

On the bright side, the Trustees have worked consistently throughout the various lockdowns to improve the facilities available and plan for future provision. A range of refurbishments have taken place including re-carpeting and decorating plus the creation of a craft studio and new facilities for the snooker room. Hours and hours of volunteer effort have brought this about. The Trustees remain grateful for all the help that they continue to receive from a small team of hardworking and conscientious supporters.

It has been really pleasing to see activities restarting and some users of the facilities being able to carry on unhindered by the demands of social distancing and other important controls.

The Trustees value constructive feedback from anyone in the village or beyond. One parent drew their attention to some issues in the outdoor play area which the Trustees were able to rectify speedily. Good quality communication is important and is very useful to the Trustees. Please note that the best way to contact the Trust is by this email address: ***winkleighsportscentre10@btconnect.com***

The Trustees are in the process of putting new doors on the outside toilets. The CCTV coverage is also being extended to offer more security to this building. In addition they are considering locking the toilets overnight and they are improving the maintenance of the toilets.

The most disappointing news for the Trust is that external financial factors, beyond anyone's control, have begun to make the siting of the Village Work Hub at the Sport Centre almost impossible. Most avenues have been explored to support this project but it is now very unlikely to happen in its present form. We hope that TDC will be able to find other suitable premises for this much needed & worthwhile project.

Tom Radcliffe - Trustee & Secretary.



Winkleigh Community Centre - New Blood Required



The Community Centre was purchased from Devon County Council in 2011 by Winkleigh Community Assets Trust – a company limited by guarantee with no share capital – set up by four local men for the purpose. They were David Lausen, Peter Stutt, Alan Mulcahy and Phil Tarry. David stepped down some years ago when he and Philippa moved to Taunton, leaving the remaining three to continue.

I am sure that those who use/visit the Community Centre - even if it is just to vote or get a flu jab - will have noticed considerable improvements have been made over the years, although with a Category 2 listed building dating back to 1874 there is always more to be done.

Having spent ten years “in the saddle” the weight of those years is now being felt by the present team who have unanimously decided that enough is enough and that the Centre would benefit by having a younger team looking after its interests. All that is needed is sufficient spare time and enthusiasm to look after it. There is no personal financial risk involved and the ongoing maintenance is largely financed by those who use the Centre.

Apart from the physical involvement with the Centre, an Annual Return has to be sent to Companies House confirming that there have been no changes in the company’s directors or operations. This is a quick on-line operation. Being classed as a micro-business, the annual accounts do not need an audit and the current accounting system automatically generates the annual accounts in the format acceptable to Companies House and which have to be sent by Royal Mail.

Being a not-for-profit company, the directors receive no emoluments and are fully entitled to claim from the company’s accounts any personal monies spent for the Community Centre.

Anyone interested in finding out what is involved in helping to manage, maintain and run this important village asset can find out more by contacting one of the team on the phone numbers below. It would be appreciated if a changeover could be effected during the next three months.

Peter Stutt - 01837 83283
Alan Mulcahy - 01837 680145
Phil Tarry -01837 83836

What's On Diary – 2021

All dates & details are *PROVISIONAL* at the time of going to press and depend on Covid-19 Restrictions being lifted.

Please send details of your events to articles@distinctlywinkleigh.co.uk

June	
2 nd from 2 – 4 pm	Memory Café, Community Centre – Re-starting
6 th starting at 2.30 pm	Farm Walk looking at Devon Hedges – Booking essential see website@devonhedges.org
17 th from 7 am – 10 pm	Voting day for Neighbourhood Plan Referendum
19 th & 20 th	Virtual Rainbow Run fundraiser – Children's Hospice SW. See www.chsw.org.uk/rainbow
29 th from 4 – 7 pm	Transitions Project Community Wellbeing Fair in the Community Centre. Please call in to see us.
July	
10 th starting at 7.30 pm	Winkleigh Singers Concert in St. Michael's Church, Great Torrington
10 th – 18 th	Winkleigh Fair Week (<i>Provisional details are at page 41; final details will be in Programme</i>)
12 th at 2.30 pm	Wives Group Meeting, Village Hall Back Room
16 th at 7 pm	Quiz & Pudding Night – Village Hall
17 th – 9 th August	Biodiversity Group: Big Butterfly Count
24 th (start time to be advised)	Church Fete (Details to follow)
31 st between 3 & 6 pm	Village Hall Grand Opening (see announcements)
August	
14 th from 6 pm 'til late	Sam's Cider Summer Festival, Cider Barn EX19 8AP
September	
4 th doors open 6.30 pm	Great British Seaside Show-Village Hall
18 th (start time to be advised)	Winkleigh and Bow Young Farmers Tractor Run starting on Winkleigh Airfield

News from Winkleigh Parish Council

I am pleased to announce that I have been elected Chair of Winkleigh Parish Council. I have been effectively co-ordinating the COVID Volunteers in the Parish for the last 14 months and hope to continue to serve the Parish well as Chair of the Council. If you need to, please feel free to email me at Cllr.Findlay@outlook.com or ring me on 682616. If I do not answer leave a message and I will always return your call. Alternatively ring any of the other Councillors whose contact details are on the Parish Web page - <http://www.winkleighpc.org.uk/> or the Facebook Page.

Our new Vice-Chair is Councillor Tom Radcliffe, Cllr.radcliffe@outlook.com; 07811772730. Tom and I aim to work together for the benefit of the community.

One of our immediate jobs is to alert Parishioners to the publication of the Neighbourhood Plan.



Parishioners are due to vote in a referendum on 17th June this year. It is important that we have a good turn out and that people support the adoption of the plan.

The Plan is a once in a generation chance to influence the way in which Winkleigh develops and changes. It has been written by local people over the last four years and is based on what you have told us about Winkleigh now and how you would like to see its future. It covers housing, the development of the local economy, the protection of the environment, and traffic and transport issues.

By law, the Neighbourhood Plan has to be voted on by electors in the Parish. If a majority approves the Plan it becomes part of the national and local planning legislation. **A vote will take place in Winkleigh on 17 June 2021. If you are registered for a postal vote you will automatically get one sent to you, otherwise you will get a polling card and will vote in person at your usual venue.**

You can vote if you are on the Electoral Register for the Parish of Winkleigh. If you are not sure or wish to register contact Electoral Services at Torridge District Council on 01237 428739 or www.torridge.gov.uk

The Plan is the best opportunity for local people to have influence over the future development of Winkleigh. The Plan addresses the challenge of enabling Winkleigh to build on its strengths – its environmental assets, its history and heritage – whilst delivering sustainable economic and social opportunities which will allow it to grow and thrive for the benefit of local people.

Where can I get more information about the Plan?

Copies of the Winkleigh Neighbourhood Plan are on the Parish Council website www.winkleighpc.gov.uk Alternatively you can get copies from Cllr Mercer in Hollocombe 83841, Angela Findlay on 682616, or Penny Griffiths on 83407. Copies have also been left with various traders and businesses around the village. The plan was expensive to produce and in order to keep costs down when you have read the plan, please pass it on to friends and neighbours or return it so as many people as possible can read the plan.

This is your chance to have your say so please vote **Yes** on 17th June. Thank you.

*Angela Findlay
Chair of Winkleigh Parish Council
Covid Support Co-ordinator*

New Defibrillator at Surgery in Southernhay

Winkleigh Parish Council is pleased to announce that a new defibrillator has been installed on to the outside front wall of Wallingbrook Health Group GP Surgery at 15 Southernhay, Winkleigh. Like the defibrillator located in The Square, Winkleigh, this defibrillator is owned by SWAST; however, with a financial cost for a four-year service level agreement, currently around £1700.00, which Winkleigh Parish residents pay for indirectly through their council tax (precept) bill.

The acquisition and installation of this defibrillator in Southernhay is completely down to the goodwill and generosity of a small number of people, without whom it may never have been installed.

Winkleigh Parish Council wishes to thank: **Mrs Janet Burgoyne** who raised awareness of the need for a defibrillator at this location on the 'Winkleigh!' Facebook page, following a sudden serious incident with a friend. **Kevin Down** of Kingsley Plastics, who immediately responded to Janet's Facebook post and agreed to fund the



defibrillator service agreement, **Lucy Harris** at Wallingbrook Health Group who arranged for the approval of the installation from TDC, who own the building, and **her staff** at the Southernhay Surgery, who will carry out the monthly checks on the defibrillator, and also **Terry Bridges**, the Electrician who fitted the electric 'warming' box for the defibrillator to the surgery wall free of charge.

The Parish Council has now received further requests from other residents for additional defibrillators to be placed around Winkleigh/Hollcombe. The requests are understandable, but due to the significant cost of each device, as well as sponsorship, donations, grants and a potential rise in next year's precept (council tax) to fund additional devices, will have to be considered by the Council prior to budget setting for next year.

If any residents wish to form a charity or funding-base for additional defibrillators, this can be done separately from the Parish Council and with different suppliers/agreements.

Melanie Bickell - Winkleigh Parish Clerk

Community Wellbeing event in Winkleigh on 29th June

How do you find out what services, groups and businesses there are in and around your community? It's not always easy! But a good way is to come and meet people, have a chat, and see what's happening.

The Transitions Project and West Devon Community & Voluntary Services (CVS) have been running Community Wellbeing events across Torridge and West Devon for five years now. We give people a chance to find out about their local community groups and services. We hope that as well as gaining information you have an opportunity to make your voice heard - and might be inspired to try something new and make new friends! Bringing community groups and services together strengthens local links and gives people the chance to network around their local community.

Transitions is a partnership between the Wisermoney charities (Navigate CIC and Encompass Southwest) and West Devon CVS. We are funded by the National Lottery Community Partnership Fund. We provide free confidential debt and money advice, money and budgeting courses, and run community events to build more resilient communities. Our aim is to reduce social isolation and improve financial wellbeing. We work with people who are often isolated from mainstream services, and serve the rural communities of West Devon and Torridge. Please visit our websites: www.navigatecharity.org.uk www.wisermoney.org.uk www.westdevoncvcs.org.uk

How will it work?

The event in Winkleigh will take the form of a small fair **to be held in the Community Centre on Tuesday 29 June from 4-7 pm**. We hope to have local groups and services reserving space for stalls to promote and market themselves to the public. We will approach local clubs, community groups and agencies active in the area, as well as all levels of local government and local businesses for their support. The responses we receive from them will obviously dictate the nature of the event and its outcomes. We have chosen the time to allow for children and parents to attend, as well as those at work.

We plan to produce a directory of local services which will be available to everyone who attends, with the words 'Find out more about local services for families, young and older people. These will relate to health, keeping safe, energy, learning, arts, benefit and money advice, local plans, housing, conservation, befriending, getting involved...and much, much more!'

We have organised seven successful events in other local towns and villages, but had to postpone the most recent one due to lockdown.

This event in Winkleigh is taking place after the Government's Step 4 of restriction easing expected on June 21st and we will be following all Covid guidelines, closely complying with all necessary measures to ensure public safety.

Our Devon County Councillor Writes



I am delighted to have the opportunity to write in *Distinctly Winkleigh* again as the County Councillor for Winkleigh and Torrington Rural, and I would like to start by thanking everyone who supported me in the Elections on May 6th. It is an amazing privilege to represent Winkleigh at County Hall, and to be returned with an increased majority and 55% of the vote is a great honour. I will do all that I can over the next four years to repay that vote of confidence in me and to represent everyone, however they voted.

With large majorities, come large responsibilities. The overriding priority for me, and for the Administration at County Hall lead by Cllr John Hart, is recovery. Recovery from the pandemic. Recovery for our local economy. Recovery for our regular health services.

The County Council has already set aside a large amount of funding to invest in skills and re-training, and I want to see the opportunities from this benefit our communities in Torrington Rural, including of course Winkleigh.

Ensuring that we continue to protect our older residents, young people and those in need is also a priority. I will be keeping a watching brief on DCC's Social Care Services and will continue to push for more services to be delivered locally.

Finally, the state of our local highway network is never far from my mind. There is a big job to do – both in the village and the outlying rural areas, and around Hollocombe too. But I will fight for every penny that I can get for more funding for drainage and for local resurfacing schemes.

I will keep readers of *Distinctly Winkleigh* updated as the work of the new Council begins. However, one development that has happened lately is that Devon County Council is now providing free community testing for Covid-19 in Great Torrington, Okehampton and Crediton. Community testing uses the rapid Lateral Flow tests and anyone can have a test if they have no symptoms, as this form of testing is designed to pick up asymptomatic cases. It is particularly ideal for key workers or anyone who cannot work from home. No appointments are necessary, and the availability of the mobile testing sites can be found online at **devon.cc/testing**. I hope in time we can also bring a mobile testing site to the Winkleigh area as I appreciate it is still far to travel to the market towns.

My thanks again to the people of Winkleigh and Torrington Rural for re-electing me. If there are any DCC issues you'd like to contact me about you can contact me via Facebook on **facebook.com/cllrsaywell**, ring 07886 446560 or email **andrew.saywell@devon.gov.uk**.

Winkleigh Church Flower Ladies



It has been a difficult time for everyone over the past twelve months, but we are hoping that the forthcoming time ahead will begin to look more promising.

Easter was the first time we were able to decorate the church windows & pedestal with flowers. It was a great joy to see during the Easter Sunday service. The church is also open on a daily basis for private prayer, with services being held on Wednesdays and Sundays.

A flower display is now situated on the pedestal on a weekly basis. We hope that it won't be too long before we will be able to organise a welcoming cup

of tea/coffee & cake event again once restrictions are eased.

If there is anyone who would like to join our small group of flower ladies you would be very warmly welcomed. You do not need to live in Winkleigh or have any experience.

All queries: please contact Marcia - 01837 83734 or Linda - 01837 680040.



DOWN FARM

Growing food, feeding the community

Organic produce from our farm and local suppliers.
Online farm shop OPEN weekly
Friday - Tuesday for orders on Thursdays.
Order online or phone
.....
**- VEG - VEG BOXES - SALAD - HERBS - FRUIT - MILK -
- BREAD - BUTTER - EGGS - DRY GOODS -**
.....
Contact farmers Olivia & Henry
07739892488 | www.down-farm.com
hello@down-farm.com



Winkleigh Fair Week 2021 Update

We currently have a **provisional** programme planned to include the weekends of 10th July and 18th July. The preliminary programme is as follows:

10 th	Fun Shoot at the Sports Centre 12 pm – 5 pm. A "have a go" at clay shooting with a fun competition and trophy. All ages catered for.
11 th	Flea Market at the Sports Centre 10 am. Opening ceremony (crowning the King & Queen etc.) with church service outside in the square 3 pm. Followed by Cricket Match: Kings Arms v Seven Stars at the Sports Centre.
14 th	Vintage Car Meet in the Square starting at 6 pm.
16 th	Quiz organised by the Village Hall starting at 7 pm.
17 th	Fair Day outline plan so far: The theme is "Carnival": we have the Crooked Tempo Samba Band coming from South Devon to help us celebrate. Fancy dress is encouraged on a Caribbean theme: Pirates of the Caribbean, Mardi Gras, Hawaiian Shirts, shorts and shades. We also have Tracy Mardon's local Community Rock Choir performing. Plus a disco for the young ones early evening and live band The Fire Blockers later on. There will be other activities and games during the day and food options available.
18 th	Car Treasure Hunt starting at 4 pm.

The full and final programme will be published next month and made available in all the usual outlets in the village, together with event posters up in the Square. Facebook will also be a good source for the latest news: our page is "Winkleigh Fair Events".

Please note that all events are reliant on government guidelines regarding Covid-19 and insurance conditions, so may be subject to change.

*Sarah Goody
Chairperson*

Storage containers to rent near Winkleigh

20 foot x 8 foot x 8 foot high

Long or short term rentals, from £20 per week

For more details please call Julian on 07947 877284

or e-mail julian.tolley@btinternet.com

W H T Letting

News from Winkleigh Primary School



All the children have now been back in school for 8 weeks since the last lockdown and they have settled in so well. Due to our extensive online provision during lockdown (over 850 hours of live teaching) and the ability of children being able to use Microsoft TEAMS in school, we have found children are well placed to make good progress. We very much value having all children back in school where they belong.



PE and PHSE (Personal, health, social and emotional education) are very high on our school improvement plan this year as we recognise the importance of children's emotional and physical well-being after the recent lockdowns. We use our PE premium grant to buy into Primary Sports, who provide expert coaches to support our PE provision from Reception to Year 6. They also provide us with after-school provision for our Key stage 2 classes as we still need to keep to bubbles within school. Primary Sports have been a fantastic asset to our school for the last three years. Working closely with our coach, Mr Gillard, we are able to provide an engaging, exciting and enjoyable physical education curriculum to our whole school community.



Another feature of Winkleigh Primary School is its extensive ICT provision. We now have individual iPads for every child to use in Years 4, 5 and 6 and are almost able to provide for all our Year 3 children too. During lockdown we made extensive use of Microsoft TEAMS to support and personalise each child's learning. We were very lucky that the Church donated 15 iPads to the school during lockdown and we now have been able to put them in our individual iPad provision. We would like to thank the Church for their incredibly kind gesture to support our school community.

Before lockdown, we prided ourselves on our after school clubs, educational visits and residential which we were able to provide for our children. We are slowly beginning to build up this provision again as things open up. We are delighted that Mr Davis, our PE Lead Co-ordinator, has managed to organise a residential for our Year 6 children at an outdoor centre in



Bude in July. We know the children will have a wonderful time as these experiences provide so many memories for them.

Key Stage 2 children are also taking part in a skateboarding day this week which will be fantastic if last time's visit was anything to go by. For our Key Stage 1 children we have a circus day planned at the end of the month.



Our school and nursery unit both continue to grow. We now have over 45 children registered in our nursery which is fantastic. We are starting to plan transition for some of those who will move to the Owls Reception class in September. The school now has 180 children on roll. These are very positive numbers moving forward. It is a great strength of the school that numbers continue to rise. We have a

number of children on roll that are not in the Winkleigh catchment area which makes us very proud of our provision.

We are so proud of our pre-schools and schools and all the staff who work at Winkleigh and Kings Nympton as part of the Woodland Federation, which is growing from strength to strength. All our staff go above and beyond to support the needs of our children and provide them with the very best education.

Why not visit our website to find out more about our wonderful school at www.winkleigh.devon.sch.uk



CHULMLEIGH COLLEGE

*Do you have a child in Year 5?
Thinking of Chulmleigh for secondary school in 2021?
Why not 'Like' our Facebook page to get an insight in to College life,
& updates on open events & taster days later in the year.*

Why choose Chulmleigh?

2019 GCSE Results: Best in the region for the 5th year.
First or second in Devon (non-selective schools) across the
key measures of school performance.

School Life: Pupils benefit from excellent extra-curricular
opportunities in outdoor education, music, drama,
sport and cadet corps.



www.chulmleigh.devon.sch.uk 01769 580215

admin@chulmleigh.devon.sch.uk

 @ChulmleighAT

 @ChulmleighCollege

It's been so long...

In fact, much too long since we all last met on October 21st 2020.

At the Forget-Me-Not Café in the Community Centre, our friends and volunteers meet on the first and third Wednesday of each month. We also have a Clinic Hub where our specialist Trish will guide, help and inform on ways to improve the life of people (and their carers) who suffer from memory loss. She will help with accessing various agencies that can open up all types of possibilities to enhance everyday life. This Hub takes place on the second Wednesday of each month from 9-11 am.

During the COVID-19 lockdowns we have tried to keep in touch with everybody through phone calls, Christmas mini-hampers, cream-teas, flowers and even the occasional trips to Crediton's Covid Vaccination Centre – which for some of us were a real treat; an excursion away from Winkleigh, a glance at nature waking-up on the way, very kind marshals on arrival and the possibility of chatting to “real people”. There was also the hope of a return to some degree of normality.

We are very proud to announce that once more the BIG LOTTERY has granted us monies to enable us to carry on our Café work for another whole year. We intend to reopen on Wednesday 2nd June and have already secured activities for the two sessions in June and two more in July.

We cannot wait to meet everyone face to face, mask to mask, using and following the same security measures as before with one-way traffic, temperature and name checking, hand-gel and distancing, which is mercifully easy in the hall in the Community Centre.



Looking forward to meeting you all very soon now.

All the volunteers at Forget-Me-Not Café

Winkleigh Church Wives Group

Some positive news for this report; if all goes to the government plan, we should very soon be able to meet inside the Village Hall as a group. Working towards this, we hope to be able to meet on MONDAY July 12th at 2.30 pm in the small meeting room of the Village Hall.

It will only be a social afternoon, just meeting up and having a cup of tea and a chat. It has been such a long time since we last met together as a group, which was in March 2020. It will be nice to be able to meet and catch up with all the news.

If all continues to progress well we hope to be able to resume our monthly meetings from September 13th 2021. Look forward to seeing you soon.

Janet Magor (secretary)

Winkleigh Singers Undeterred - Open-Air Rehearsals



The Winkleigh Singers

Registered Charity
Number
117121

Undeterred by the continuing rules preventing choir rehearsals indoors, the Winkleigh Singers have made the most of the sunny, dry weather by holding a series of open-air singing sessions.

Hosted in the garden of Choir Master, Roland Smith, and adhering closely to the 'rule of six', with two-metre distancing between them, the singers enjoyed running through a repertoire of choral pieces. Even the birds joined in with a bit of singing.

The events have been greatly enjoyed by the members, despite being a little chilly occasionally and they all look forward to returning to full rehearsals in the near future, with concerts planned for the summer months.



STOP PRESS

Winkleigh Singers will be back performing on 10th July at 7.30 pm in St Michael's Church, Great Torrington. The programme will include some joyful music by Handel and others.

Special guest will be Peter King, Organist Emeritus of Bath Abbey, a world-class player and recitalist.

Further information and tickets: www.winkleighsingers.org.uk

Life on the Verge – Winkleigh and Hollocombe

Roadside verges can play a really important part in providing space for wildlife. We are already aware of the decline in abundance of insects in the UK (Parliamentary Office of Science and Technology, March 2020) and how improved habitat can help to reverse this loss.

Here in Winkleigh, we joined “Life on the Verge” some years ago to learn more about wild flowers and how to survey some of our village verges. Now, through a partnership between Winkleigh Environment Group, Biodiversity Group, Winkleigh Society and Winkleigh Parish Council, we are beginning to shape a new way to manage these green spaces for the benefit of insects, but also because they can look more beautiful.



Some of our verges are already regularly cut and managed by the residents who live beside them. We encourage these volunteers to allow the grass and flowers to grow up a little in the summer and to bloom, and then to cut more closely at the end of the season.

Some of the verges were previously cut by Devon County Council, but now this

responsibility has been passed to the Parish Council. We surveyed the existing flowering plants on them in April and found that some were already ‘species-rich’. These ones have been selected for no mowing this season, except for a one metre border around them. Others were mostly dominated by grasses and more invasive plants, so these will be cut four times a year and the clippings will be collected. This will reduce the fertility and should produce more flowers in future. Do take a moment, while you are walking around the village to see what is flowering this year.

In addition, with the purchase by the village of a scarifier to lift up moss and ‘thatch’, some verges are being given special treatment and are being transformed by volunteers with the addition of native wild flower seeding.

If anyone is interested in helping with this project, or has any questions about our verges, please get in touch with Alan Jacobs (01837 83895), Kim Melhuish (trulywildabout@gmail.com) or via Facebook: Winkleigh Environment Group Page.

Winkleigh Biodiversity Group

For the past year, while we have had fewer social interactions, it is amazing how much more we have noticed the smaller creatures living around us. It has been encouraging to see the discussions on the Winkleigh! Facebook Page about local sightings of bats, slow-worms, hedgehogs and even a cute little dormouse. We live in a very special place and it is shared by so much fascinating biodiversity – from lichens on old tree trunks to the tiny bees nesting in my lime mortar walls. Here are a few ‘citizen science’ events coming up this summer. You can take part as an individual online or join in with our group at the Biodiversity Area behind the Sports Centre.

22nd - 31st May

Every Flower Counts (Plantlife)

17th July to 9th August

Big Butterfly Count

July – August

Bumblebee identification and
Pollinator Monitoring

See Winkleigh Community Action Facebook page for more details
or email Kim Melhuish ([trulywildabout @ gmail.com](mailto:trulywildabout@gmail.com))
or winkleighbiodiversity.blogspot.com



TEN ACRES VINEYARD CAMPSITE

- ⑩ **Free local wine deliveries** to Winkleigh and surrounding area. Fri 4 – 7pm.
- ⑩ **Guided vineyard tours & wine-tasting** From 1st May - 30th September 4.30pm every Saturday. Private group tours also available (minimum 6 people). Booking essential for all tours.
- ⑩ **Campsite and Devon Wine Shack** open 1st May - 30th September. For tents/ small campervans. Glamping tents also available. Booking essential.

Order wine and book glamping/camping online on our website.
Email/phone for vineyard tour bookings or enquiries.

W : www.tenacresvineyardcamping.co.uk **E :** tenacrescamping@hotmail.co.uk
T : (01837) 83892

Winkleigh Environment Group – Our Gardens



If you've ever kept your own bees then you'll have discovered the remarkable truth that honey from your own hives is the best you've ever tasted! Well ok, there may be a touch of beekeeper bias involved, but any beekeeper who's been lucky enough to taste early season dandelion honey may just have a point. Surprisingly, some of the best award-winning honeys have actually come from city hives, due to the profusion and variety of flowers in city gardens which highlights the

sad truth that the diversity and density of flowering plants in the countryside is dramatically lower than in the past.

Most farmers do their best to provide us with food and look after the environment but each of us with a garden can also make a difference. UK gardens are estimated to cover 1 million acres which is over four times the area covered by UK designated National Nature Reserves, so if we are serious about trying to help wildlife then we really should all be encouraging friends and neighbours to turn our own gardens (or at least, parts of them) into refuges for wildlife.

The easiest way to start takes no effort at all. Next time you're thinking of mowing the lawn, just grab a book instead, make yourself a tea or coffee (or something



AIRFIELD

General Maintenance & Repair Garage

- MOTs • Vehicle Diagnostics
- Clutches & Cambelts • Brake & Brake Repair
- General Maintenance • Air Conditioning
- Servicing • Bodywork & Restoration



01837 682 678

www.airfieldgarage.com

stronger if you prefer) and give yourself a bit of time to relax and feel good about yourself doing your bit for nature. The charity 'Plantlife' has shown that reducing lawn mowing to just once a month can increase the number and diversity of flowers and nectar available for pollinators and other insects tenfold. They showed that: "80% of lawns supported the equivalent of around 400 bees a day from the nectar sugar produced by flowers such as dandelion, white clover and selfheal. But 20% of lawns (dubbed "super-lawns") were found to be supporting 10 times as many – up to 4000 bees a day." They also found that although species diversity was greatest in long un-mown grass, the highest nectar production was from lawns cut once every 4 weeks as this regime encouraged a profusion of short grass-loving plants such as daisies and clover. So there you have it save yourself the effort and only mow once every 4 weeks at most. Even better, why not leave some of your lawn to grow long, then just once a month, cut paths plus the occasional circle of lower grass through it, and on warm summer days, lay out your picnic rug, and lie down, surrounded by longer grass, flowers and humming insects!

If you're interested in learning more, it's worth taking a visit to www.plantlife.org and seeing the difference that reducing the time spent mowing your lawn can make to wildlife.

Another simple measure that gardeners, not only could make, but *should* make, is avoiding composts containing peat. Over a decade ago the horticulture industry committed to voluntarily removing all peat based composts from garden centres. They've failed dismally and there really is no excuse. Over a hundred commercial

14TH AUGUST 2021 • AT THE CIDER BARN - WINKLEIGH - EX19 8AP • 6 PM TIL LATE



The poster features a central image of four glasses of cider on a wooden surface. Above them is a blue banner with 'SUMMER FESTIVAL' in yellow. The background is green with white triangular patterns and colorful apples. To the left is a red sign for 'LOCAL FOOD' with silhouettes of people. To the right is a purple sign for 'LIVE MUSIC FROM RECKLESS' with silhouettes of a band. A red starburst in the center of the glasses says '£7.50 PER GLASS'. At the top, 'SAM'S CIDER' is written in a stylized font with a tree icon.

TICKETS MUST BE PURCHASED IN ADVANCE FROM FACEBOOK OR WWW.WINKLEIGHCIDER.CO.UK
OVER 18'S ONLY NO PARKING ON SITE



plant nurseries have now stopped using peat entirely and if they can do it, then home gardeners can too. Quite apart from the damage done to the bogs that are dug up and the complex ecosystem of plants and animals they support, the peat in those bags of compost contains carbon that has been locked away beneath the ground for thousands of years and will now be released into the atmosphere. Each year the peat extracted for us to use in our gardens releases almost half a million tonnes of carbon dioxide. Our local garden centres in Bow and Okehampton do have peat-free compost but it is hugely outnumbered by the peat-based options. If everyone that shops there points it out to them then maybe

they will start to think about living up to the promise they and the rest of the horticulture industry made over a decade ago to stop selling peat.

There are two sides to the gardening carbon equation. By not using peat we reduce the amount of carbon we release into the atmosphere, but we can also help the other side of the equation by turning our own gardens into mini carbon sinks and helping to actually reduce atmospheric carbon. BBC's Countryfile are running a campaign to plant 750,000 trees and so far, around 5,500 have been registered in our part of the Devon map. When you next plant a tree or shrub, or grow flowers or vegetables, simply register them at www.plantbritain.co.uk. Every extra tree you plant will help to lock up some carbon and if everyone with a garden in the UK planted just one tree, Countryfile would beat their target thirty times over!

Composting your own kitchen and garden waste and adding it to your borders will provide your plants with valuable nutrients but some of it will also be locked into the soil, further reducing atmospheric carbon. If you put kitchen waste into your normal bin then there is a good chance that it will be buried and slowly turn into methane, which, when released into the atmosphere is around thirty times worse as a greenhouse gas than carbon dioxide! When you do add your kitchen waste to your

RAY SQUIRE CONTRACTING WINKLEIGH

Hay-making, Grass mowing, Turning, Rowing up,
Small bale baling & Topping, Hedge Trimming

Give us call on – 07912316679

compost heap, try also adding some of the cardboard from all those cardboard boxes you've received from online purchases during lockdown. It will save your heap becoming too wet and should improve the final compost.

Every time you turn the soil over in your garden you release some of the carbon that was locked in there. Therefore, instead of weeding, or turning your soil over, whenever you do mow your lawn, lay some of that spare cardboard over the weeds in your borders and add a layer of grass clippings on top. It will save you time weeding, keep moisture in the ground to save watering and will also start to build up the carbon in your own garden 'carbon sink'. The Government is starting to recognise the importance of soil carbon and is trying to encourage farmers to reduce tilling of their soils. It's been shown that this practice can also reduce the need for fertilisers and reduce soil erosion through water run-off.

If you have any woody clippings, branches or logs that are too coarse for your compost heap, don't burn them or bin them, but instead, lay them on bare earth in a dark corner of your garden, and they will provide a home for many fungi and invertebrates, which in turn will attract birds, hedgehogs and amphibians. Over time, the heap will rot down and further add to your carbon sink.

One last thought. . . . now you've done a great job of attracting hedgehogs to your garden, join in the Winkleigh hedgehog initiative, by cutting a small hedgehog door in your fence (with your neighbour's agreement of course) allowing the Winkleigh hedgehog population to move freely around the neighbourhood, helping to control slugs in everyone's gardens and hopefully improving their chances of finding a mate (the hedgehogs that is . . . not your neighbours)!

David Robinson



**Southwest
Fixings Ltd**

Agricultural & Building Supplies Trade Counter

Tel: 01837 83492

Email: sales@southwestfixings.co.uk

- | | | |
|-------------------|-------------------|---------------------|
| • Fencing | • Nuts and Bolts | • Plumbing |
| • Timber | • Hydraulic Hoses | • Tools |
| • Oils and Adblue | • Boots/workwear | • Fixings |
| • Calor Gas | • Tractor and | • Fasteners |
| • Animal Health | Implement Parts | • ...and lots more! |
| • Batteries | • Drainage | |
| • Pet food | • Guttering | |

Delivery available!

Devon Hedges Walk Sunday 6th June

To celebrate National Hedgerow Week (29th May to 6th June) there will be a walk around Higher Cherubeer Farm, Dolton on Sunday 6th June with Tom Hynes from the Devon Hedge Group. The walk will focus on the importance and value of Devon hedges beyond their original agricultural purposes. This includes looking at hedges for wildlife, landscape, wood fuel, carbon capture and flood relief.

Agricultural subsidies will be changing in the near future so this walk will look at hedges in a new light. The way they are managed greatly affects the benefits that hedges produce so there is a need for future agricultural support to help farmers to manage hedges sympathetically so that they maximise the benefits that they bring about.

The event has a limited number of places so booking with an email to website@devonhedges.org is essential. The walk starts at 2.30 and will be around 1 ½ hours.

Devon has more hedges than any other place in the UK. 53,000 km (33,000 miles) remain forming a network from coast to coast that is broken only by cities, major roads, rivers and the high moors. Even better, most of these hedges are of high quality – the county has about one fifth of all the species-rich hedges in England. Together they are of international importance, as an historical, cultural, wildlife and landscape resource.



THE SHIFTERS
Spirebourne Limited
Liquid Waste Disposal and Drainage Co.

EMERGENCY CALL OUTS

Septic Tank/Cess Pool Emptying – Any Size
Grease Traps
Drain Blockage Clearance
Various Commercial Liquid Waste Disposal
Servicing
CCTV Drainage Surveys
Pump Repairs & Renewals
Installation of Septic Tanks & Sewage
Treatment Works
Mantair Units

FREEPHONE 08000 855 185
spirebourne@hotmail.co.uk
www.spirebourne.co.uk

The Devon Hedge Group, formed in 1994, draws together a wide range of organisations and individuals interested in conserving Devon's hedges. The group aims to raise awareness of and interest in the county's extraordinary hedge heritage, so that it may survive long into the future. Guidance and training from experts on hedge management (including traditional hedge laying, wildlife-friendly trimming, and hedge planting and restoration) is offered, and the group aims to influence policy and funding to benefit hedges.

Kim Melhuish

National Hedgerows Week



Farm walk looking at Devon Hedges



A walk around Higher Cherubeer Farm, Dolton, EX19 8PP
to take a fresh look at the value and importance of
Devon Hedges, with owner Tom Hynes from the
Devon Hedge Group

Sunday 6th June 2021



2.30pm

**Booking essential :
website@devonhedges.org**



Local Logs



Dry seasoned hardwood
All stored under cover & delivered in
Chulmleigh & surrounding area.

Truck Load	£90
Double Load	£180
Trailer Load	£280
Net of Logs	£5
Net of Kindling	£5

Martin 07817 464420 parish@btinternet.com
www.mpccontracts.co.uk

The People at the time that Winkleigh Pump was erected Mid 1830's



In this Victorian photograph (*It's Living History, Isn't it* - Gillian Holman and Peter Monkcom) is a lady who went by the wonderful name of Temperance Hunt (Nee Westaway).

I tried unsuccessfully to find Winkleigh in the 1834 Pigot's Directory of Devon, which was a nuisance because I really wanted to find out who were the people of the Village who would have benefitted from the Reform Bill of 1832 to which the Pump was dedicated; many of whom would have then been able to vote for the first time. They would have raised the money for it and built it, and who the people were who would have henceforth been using the Pump? The Microfiche of Pigot's Directory, although amongst all the other Devon Towns and villages included in the Directory, listing the Gentry, Businesses and Tradespeople for

each, states on page 2 the name "Tawton-with-Winkley" in the index, but sadly, the details for "Tawton-with-Winkley" are missing! Maybe Ancestry.com hasn't included it by accident, or for some reason Pigot actually omitted it.

I am hoping that once we are out of Lockdown, I can visit the archives in Barnstaple to find this out. Also, I wonder if there are any archived newspapers of that time that refer to the Pump. Was there already a pump or a well in that location before the obelisk was raised? Does anyone have any notes or records from that time?

Meanwhile, the closest I can get with historical records, timewise, is the 1841 Census, in particular for the centre of the Village to identify the inhabitants who would have made use of the Pump. I have therefore concentrated on studying the part of the 1841 Winkleigh Census which covers "All the town or Village of Winkleigh taking the extremities on the East at Court Barton on the West at Townsend on the North at Folly and on the South at Westcotts" (sic).

Temperance can be found, aged 29, married to William Hunt, Carpenter, with the first 4 of her (later 11) children, living in Higher Street, so she would most definitely have been someone who used the Pump daily, as it served the homes and shops around the Centre of Winkleigh. The street names in 1841 were very simply Higher Street (top line of the Square where the current Vets is), Middle Street (from the Butchers up to, or just beyond where the Ring Of Bells once stood outside the church entrance) and Lower Street, the road running below, with Church Lane and Lower Town also appearing on the census and some named houses. The road along where the Seven Stars now is, became Barton Road by 1850 (White's Directory) and led to Court Barton. From Folly to Higher Street ran a Lane called, I think, either Rock Lane or Back Lane - it is extremely hard to decipher the script.

Other notable names of folk I have come across in the 1841 census who, like Temperance would have been there to see the new Pump obelisk being installed and would have used the new Pump are as follows:- in Higher Street - Sarah Bell, Shopkeeper (possibly Sarah Cock by 1850), 70 year old Mary Marshall and family, Serge-weavers Mary Pimm, Elizabeth Mitchell and Charlotte Pike, Cordwainer John Lamb, and their families, Robert Williams (Carpenter) and family, Shadrack Newcombe (Wheelwright). The Rev'd. Henry Wright and family at the Vicarage, Arthur Friend the Schoolteacher who became the village Registrar and ran a Grocery shop by 1850, Blacksmiths John Letheren (Higher St), William Raymont (near the Seven Stars) with his father Thomas who was a Tailor, and Samuel Mitchell (Lower Town) who was another Blacksmith of the Village.

There were also 3 young ladies in their early 20's of Middle Street, who gave their occupations as Straw Bonnet Makers, and 75 year old Faith Ware who lived in Middle Street with her daughter Joanna, a Glover. There are also 3 ladies/girls living in the village who go by the illustrious first name of 'Loveday'. There were 16 people living in the Ring Of Bells, of which 3 were called Mary Williams, and in addition to the large Williams family, Elizabeth Down, aged 10, a couple of men of 40 and 35 and two of the Collihole girls Rebecca and Elizabeth who were in their early 20s, possibly barmaids?

The Village was dotted with Colliholes and Mitchells, Wares and Luxtons, Turners and Darts, Sampsons and Webbers, Bolts and Haywoods. Little Grace Mitchell, aged 12, who lived in a lodging house in Lower Street and whose occupation is listed as Match Seller.

These are some of the names and professions of those who were living in Winkleigh in the years when that new Pump would have made a major difference to the water supply in the village, and to whom the Reform Bill, and those who brought it about, meant so much.

Rachel Goldsworthy

Winkleigh Football Club

Another season is almost up and unfortunately it has been another season massively hampered by the Coronavirus. It managed to start in August when Winkleigh made a mediocre start with 2 wins, 1 draw and 1 loss seeing them sit mid-table when the second lockdown commenced.

The season was then unfortunately suspended until early spring leaving Winkleigh with a congested, busy period of fixtures to complete the season. All teams coming back to play in 'operation resume' had the chance to pull out of the league and start next season, which some teams did. With a bunch of eager lads, Winkleigh decided to finish their season. Again, unlike normal seasons, the league decided to suspend all promotions / relegations and champions; not the news you want to hear playing competitive football, but in the present climate an understandable decision.

That being said, Winkleigh resumed their season in April with high spirits and great attitude. Can't say in peak physical fitness but their attitude was spot on which has evidently been shown in their results. Winkleigh have lost once since the restart, drawing 1 and winning 5 leaving them in second place going in to the final 4 games. Like I said, unfortunately no promotion or trophy to be had this season but we will settle with bragging rights if we can finish on top.

Winkleigh has built a nice little squad since coming back and the atmosphere around the club has been really positive. We have started to see more of the younger players from the village come in to the team and personally I would like to see more. We have four games left until we have a break for the summer months before we get back to it for next season.

Hopefully, with the likes of us older ones around the team still, plus a few more youths, it could shape up nicely to push on again next season. That being said, we would like to welcome anyone to pre-season training and I'm sure details will be put out on Facebook nearer the time.



On behalf of everyone at Winkleigh Football Club even though it's been a stop start season the support has never stopped, if that's coming to watch or following results on Facebook, you have always shown a great interest so thank you and long may it all continue.

*Tom Robinson
Club legend and Fan favourite*

(Image by Greg Goldsworthy)

The day a motoring pioneer drove into the history books

A journey made more than 100 years ago helped to establish a Winkleigh businessman as one of the great motoring pioneers of his age, Paul Roberts reflects on the life and times of T E J Saunders and his famous family.

Entrepreneur Thomas Edward Jenkins (T E J) Saunders made history just over a century ago when he drove a car from Blackpool to Devon. The gruelling three-day journey gave many people their first glimpse of a vehicle which was to revolutionise transport in this country. Huge crowds gathered in Exeter to cheer the great motoring pioneer as he headed for home - the village of Winkleigh.

"Horses went berserk when he reached his destination," said Bobbie Farrington, grand-daughter of Mr Saunders. "A lot of people would not go near the car - many had not seen anything like it before. His arrival must have caused great excitement." It was, indeed, a great milestone in the history of transport in the area. It was, without doubt, the first car to be brought to Winkleigh. It was also one of the first - possibly the first - cars to be brought to Devon.

Mr Saunders negotiated innumerable dirt-tracks and pot-holed roads during his extraordinary journey west in the open-top car. The moustachioed businessman would have looked resplendent in his knickerbockers, long leather leggings, leather jacket and cap. "The streets of Exeter were lined 10-deep with people when he drove through," said Mrs Farrington. "He spent the last night of his journey at Newton St Cyres before making the 'final push' to Winkleigh."

Mr Saunders had great belief in the future of the motor car at a time when the horse was still king of the road. "He did not like horses. He thought they were a nuisance... because they had to be fed," said Mrs Farrington. "After first seeing a car, he told his family - who operated successful cycle and other businesses in the village that they had to do something about it. The rest of the family thought he was absolutely mad," said Mrs Farrington. "But it didn't put him off, and it wasn't long before they realised he was right."

In 1896 Mr Saunders founded the Mid-Devon Motor Company in Winkleigh, one of the first motor traders established in the West Country. Customers travelled from as far afield as Penzance and Bristol to buy cars from workshops opened in South Street and on a site today occupied by Popham's restaurant (now Catkin Blooms). Mr Saunders, holder of the seventh driving licence to be issued in this country, sold and repaired all makes of vehicles, including the famous Model T Ford. The motor business was later taken on by his son, Bernard - Mrs Farrington's father - who had franchises to sell a wide range of cars, including Standard Triumph, Austin, Morris, Wolseley and Daimler models.

During his life he was believed to have driven every make of car ever made. When he retired in 1979 at the age of 71, it marked the end of an era in Winkleigh. "He

locked the door to the company workshop, came home, put his keys on the table...and said he had had enough. And that was it," said Mrs Farrington.

The first member of her family to live in Winkleigh was her great-grandfather, Edward Jenkins Saunders, a state photographer who took pictures for the government of the day. He was a jeweller, gunsmith and, with his wife, Eliza Jane, a general shopkeeper. Their shop - on the site where the Londis store stands today —



was a veritable Aladdin's Cave. It apparently sold everything that could be needed, including baskets, buckets, school satchels, household items and confectionery made by Eliza.

Thomas and Eliza had 11 children — one of whom worked briefly with Sir Edward Appleton on his research into the use of radar, and one who acted as chauffeur to the Earl of

Portsmouth. Their son, (T E J) Saunders, helped his father manufacture hand-made, custom-built Saunders bicycles. He (T E J) and his brother, Joseph Eli, a cobbler, were cycle racing champions.

T E J married Mary Elizabeth Treais of St Dominick, near Saltash, a house-keeper at Cotehele House. In their "courting" days, he would cycle from Winkleigh to St Dominick to see Mary — a distance of more than 50 miles.

They had five children, the eldest of whom, Edward Saunders, was for many years the proprietor of a coach company.

The Saunders' have lived in Winkleigh for about 140 years and the family has been within a five mile radius of the village since the 1600s. Mrs Farrington was the only member of the family living in Winkleigh at the time this article was written.

She has many mementos of the Saunders' glory days, though, sadly, they do not include the "No 7" driving licence owned by her grandfather. Her family own a custom-built Austin 20, which was sold by her grandfather.

The only one of its kind in existence, it was sold in 1928 to a local man before coming back to the family 18 months later when he fell on hard times. "It has been with us ever since," said Mrs Farrington. "It was the first car I drove."

One thing is for sure - it will remain in the family for generations to come as a reminder of a remarkable business which played a key role in shaping the development of Winkleigh.

*Submitted by Alan Mulcahy
(from the Winkleigh Society Archive in the Community Centre)*

Mothballed Morris

The last twelve months have been challenging for everyone – individuals, clubs, organisations and businesses. For Winkleigh Morris, public performances and practice sessions have been severely limited. For several months we were not allowed to meet at all, except virtually on weekly Zoom sessions. We were not able to hold our 30th Anniversary Day of Dance or undertake a planned series of after-school workshops for older children at Winkleigh Primary School. Our plans to visit Italy had to be abandoned, fortunately before we made any financial commitment. Our usual programme of dance outs at local pubs didn't even get published!

Unlike many other Morris sides in Devon and across the country, we took the opportunity to meet up and dance whenever the Coronavirus restrictions allowed, following all the Covid-19 rules in force at the time. Last June and July we practised dances adapted for small numbers and social distancing in members' gardens. We were also able to dance out at a few venues with plenty of space to keep us well separated from any audience. In September we commenced practising in Winkleigh Community Centre car park, before moving inside in October to make use of their Covid-secure facilities, whilst still observing the rule of six.

Sadly, the lockdown from early November curtailed such activity, and, apart from a short display on Boxing Day at Iddesleigh, it is only since 29th March that we have once again been able to meet in person, albeit with a stricter rule of six. To accommodate all our members who were keen to get dancing again we have had at least two practices a week with different members in attendance and at different

venues. You may have seen a group of us in the Community Centre car park on various afternoons. By the time this article is published, we hope to have a programme of public performances at various locations, including our favourite pubs in the area.

We hope also to return to our normal Tuesday evening practices at the Community Centre in the autumn.



Keeping our distance with extra-long sticks



A little direction from the Foreman!

We are always very happy to welcome anyone who would like to have a go at Morris dancing (and/or playing) - male or female, any age and minors over 9 years with a parent/guardian. No previous experience is necessary – although if you have danced before with another club you will already be familiar with the stepping and some of the dances.

Details of our activities are on our website www.winkleighmorris.org.uk or ring Angela on 01837 83219 or Colin on 01363 877216.

Colin Andrews

**Experienced, licensed Scandinavian
tiler, bathroom & kitchen fitter**

- Accredited for all types of tiling
- Residential and commercial
- Kitchens, bathrooms, wet rooms,
gardens, car showrooms, swimming
pools, public buildings and more

Landscaping & general maintenance

- garden and patio design
- painting and decorating
- window cleaning
- minor carpentry and building



CALL FOR A FREE QUOTE

CARL BROWN Landscaping &
Tiling Specialist

 **07714 018424**
carl.s.brown@outlook.com

From the heart of Devon to the heart of your home...

update your bedroom furniture,
transform your storage,
restore your doors, windows or gates



Custom-built, affordable solutions for inside and out, using a range of materials, including sustainable and locally sourced timber.

We are so confident in our traditional craftsmanship,
blended with modern techniques, that all
our work carries a 10-year guarantee.

Contact us for a **FREE**, no obligation quotation

✉ enquiries@bespoakjoinery.com

☎ 01837 680 030

bespoakjoinery.com

Bespoak Furniture & Joinery Ltd. The Workshop,
Middle Reeve, Brushford, Wembworthy, Chulmleigh EX18 7SJ



Word Search

H	D	H	A	L	L	O	U	M	I	B	K	R	S	N
A	E	M	Q	R	M	J	S	K	R	U	E	E	F	K
L	V	J	I	R	T	Q	W	I	O	O	D	E	M	G
O	O	N	C	O	K	C	E	L	D	G	A	N	E	V
Z	N	M	O	R	B	I	E	R	C	R	M	A	G	P
N	B	C	A	M	B	O	Z	O	L	A	N	P	B	K
O	L	C	W	S	L	N	L	U	K	H	B	U	G	C
G	U	A	J	F	W	K	S	Y	M	A	J	A	O	H
R	E	M	C	G	J	Y	P	E	P	J	T	I	U	E
O	R	E	Y	L	L	I	H	P	R	E	A	C	D	D
G	C	M	B	F	P	M	R	V	F	B	T	B	A	D
H	E	B	D	B	Q	U	B	I	L	J	T	U	O	A
E	Z	E	D	G	R	E	B	S	L	R	A	J	M	R
U	V	R	I	V	K	B	P	Z	S	D	P	J	S	X
X	S	T	R	O	F	E	U	Q	O	R	Y	B	Y	D

BRIE

CAERPHILLY

CAMBOZOLA

CAMEMBERT

CHEDDAR

DEVON BLUE

EDAM

FETA

GORGONZOLA

GOUDA

HALLOUMI

JARLSBERG

MORBIER

PANEER

ROQUEFORT

Solution on Page 64



**Ladies & gents
Hair and Beauty salon**

For all your hair and beauty requirements

A friendly and local salon

Telephone 01837 83004

Exeter Road, Winkleigh

Established
over 30 years

Sudoku Puzzle

8					5			
	7		9				4	
		9		7	8	3	2	5
3		1		9			5	
		6				1		
	9			3		6		2
2	8	3	6	5		7		
	1				2		8	
			1					9

("Sudoku puzzles are provided by www.sudokuoftheday.com")

Solution on Page 64

Sueno Beauty

Changes, Exeter Rd, Winkleigh EX19 8HW
OPEN: Mondays 10am – 9pm Tuesday 10pm – 7pm
 Wednesday & Thursday Evenings 6:30pm – 9pm

Massage and Holistic Therapies

- *Swedish Massage*
- *Hot Stone Massage*
- *Deep Tissue Massage*
- *Bamboo Massage*
- *Aromatherapy Massage*
- *Ear Candling*
- *Pregnancy Massage*
- *Reflexology*
-
- *Thai Foot Massage*

Contact: 07590233607 **Email:** suenobeauty@outlook.com

Puzzle Solutions

H	D	H	A	L	L	O	U	M	I	B	K	R	S	N
A	E	M	Q	R	M	J	S	K	R	U	E	E	F	K
L	V	J	I	R	T	Q	W	I	O	O	D	E	M	G
O	O	N	C	O	K	C	E	L	D	G	A	N	E	V
Z	N	M	O	R	B	I	E	R	C	R	M	A	G	P
N	B	C	A	M	B	O	Z	O	L	A	N	P	B	K
O	L	C	W	S	L	N	L	U	K	H	B	U	G	C
G	U	A	J	F	W	K	S	Y	M	A	J	A	O	H
R	E	M	C	G	J	Y	P	E	P	J	T	I	U	E
O	R	E	Y	L	L	I	H	P	R	E	A	C	D	D
G	C	M	B	F	P	M	R	V	F	B	T	B	A	D
H	E	B	D	B	Q	U	B	I	L	J	T	U	O	A
E	Z	E	D	G	R	E	B	S	L	R	A	J	M	R
U	V	R	I	V	K	B	P	Z	S	D	P	J	S	X
X	S	T	R	O	F	E	U	Q	O	R	Y	B	Y	D

8	3	4	2	1	5	9	6	7
5	7	2	9	6	3	8	4	1
1	6	9	4	7	8	3	2	5
3	2	1	7	9	6	4	5	8
7	5	6	8	2	4	1	9	3
4	9	8	5	3	1	6	7	2
2	8	3	6	5	9	7	1	4
9	1	7	3	4	2	5	8	6
6	4	5	1	8	7	2	3	9



ALL SHINES WINDOW & EXTERIOR CLEANING

- WINDOWS
- GUTTERS, SOFFITS, FASCIAS
- SOLAR PANELS
- HOUSE WASH (SOFT METHOD)
- CONSERVATORIES
- ROOF DE-MOSS
- PATIOS, BRICK, PAVING, DRIVE-WAY



Tel: 01805 938502 - Mob: 07711079577

YOUR COMPLETE ELECTRICAL SERVICE



We have more than 28 years of experience in electrical contracting throughout Devon.

- » Rewiring
- » New consumer units
- » Minor works
- » New installations
- » Energy saving and LED
- » Fault finding
- » Emergency call outs



We'll take care of it.

**Call us now for a
free estimate and advice.**

Winkleigh - 01837 83900

Bedwell Electrical
The Airfield, Winkleigh
Devon, EX19 8DW

info@bedwellelectrical.co.uk
www.bedwellelectrical.co.uk



And Finally

This edition includes several articles which mention the Winkleigh Neighbourhood Plan Referendum vote which will take place on 17th June in the Community Centre, or via postal voting, like the recent County Councillor and Police Commissioner Elections. Please do take the time to cast your vote to ensure that the turnout is sufficient to achieve a meaningful result. Acceptance of the Plan depends upon a majority of 'Yes' votes and will help the District and Parish Councils have a bit more control in decisions relating to future planning proposals in Winkleigh Parish.

Thank you to the two DW readers who sent in articles telling about when they met the late Duke of Edinburgh. Our cover shows the Union Flag at half-mast on the Church Tower to mark the period between the Duke's death and funeral.

Thank you also to all the entrants to the recent Poetry Competition. We hope the runner-up poems will be published in the autumn edition of Distinctly Winkleigh.

Our 'What's On Diary' has made a welcome return in this edition. It is now in the centre pages to make it easier to find. The return of local meetings and events marks another positive milestone in the recovery from the lockdowns

The deadline for contributions to the autumn edition will be NOON on Thursday 12th August 2021 for planned publication and delivery at the end of August.

W.D & S.J.CARNE

*Independent Family Owned
Funeral Directors*

Established over 60 years
Personal Attention Day and Night



Samantha Colgrave

Summerhayes, Ingleigh Green,
Winkleigh, Devon, EX19 8AT
Email: samjcarne@outlook.com
Tel: 01837 680199

Pre-arranged and Bespoke Funeral Plans
Available



HC Joinery
Bespoke Joinery Services

Harry Colgrave
Joiner

All aspects of joinery work undertaken.

Doors, windows, panelling, door canopies/porches, restoration projects, repair neglected doors and windows.

hcc2010@hotmail.co.uk
07517110668



Summerhayes, Ingleigh Green,
Winkleigh, EX19 8AT



John Short

**Professional Interior & Exterior
Painting and Decorating**

Clotworthy House, Torrington Road,
Winkleigh, Devon, EX19 8HR

Telephone: 01837 83709

WINKLEIGH AERIALS

0800 0930 625 Mob 07970 963450

UPGRADED AERIALS
FILTERS TO REMOVE INTERFERENCE



City & Guilds Qualified



AXA Insured

Trade member for over 40 Years

Discount applied for Pensioners. Free surveys

Wifi - Cctv - Camera to your TV - Freesat - Dab/FM

Also: 2nd or 3rd Aerial points installed. New TV's supplied & set up

Heating, Cooking & Living.

- Stoves & Fires • Flues, Chimneys & Stove Installations
- Seasoned Logs • Range Cookers • Spares & Accessories



To see one of the largest selections of stove, fires and range cookers in the South West, many of which are live and on display, visit Rangemoors. Whether you want to add warmth and atmosphere to your living space or cook up a storm in the kitchen, we have the perfect appliance for you and your home.

Telephone 01837 680068
www.rangemoors.co.uk

