

DISTINCTLY WINKLEIGH



Working for Winkleigh



Edition 79

Autumn 2021

*Cover sponsored by
George Shacklock, MTF Contracting, Winkleigh. 01837 83325*

The Winkleigh Society Quarterly Journal



**Winkleigh Fair
Competition Entries
Scarecrows and
Children's Pet
Portraits**



Winkleigh Society - Chair's Report - August 2021



In this edition we are featuring the contributions from **Gracie Goddard, Ava Corden and Ava Curtis**, our runners-up in our **Poetry competition**, on the following pages.

Declaration for North Devon's Biosphere Nature Recovery Plan. The Winkleigh Society has signed this Declaration. Arresting and reversing the catastrophic decline in wildlife (especially birds and insects) is key. The Rowden wildlife project is seeing great results on Westacre Farm as they create wildlife corridors to link habitats (see article on page 14). We continue to highlight the plight of hedgehogs by reporting on the Parliamentary Debate on 5th July (see article on page 27).

Committee News. As many of you will already know, Alan and Marie-Claude have moved to Cornwall. Alan, as our long serving treasurer, is mentoring Rachel Goldsworthy who has volunteered to take on this important role. Godfrey, our editor, is also learning the ropes of advertising manager (again picking up the baton from Alan). Barbara Jenkins, myself and Godfrey have begun cataloguing the archive held in The Community Centre. Alan has left big boots to fill.

Neighbourhood Plan. A good turn-out for the referendum: over 30% (as opposed to just 10% in Torrington) has ensured this plan has been voted for by parishioners. Torridge District Council formally adopted it on August 2nd, but what does this mean in practice? The policies embedded in it for the historical, cultural and built environment, community life, transport and the economy are all predicated on cooperation over these shared principles and promoting positive behaviours by all interested parties.

The Parish Council, The Winkleigh Society and individuals are already using the Neighbourhood Plan to comment/object on planning applications. It is frustrating and time-consuming though to see applications that fail to consider key issues e.g. **net gain for bio-diversity, connectivity and future- proofing new-build for climate change.**

Interesting to read in **The Okehampton Times** that **West Devon Borough Council** are contemplating imposing fines on planning agents for ill-considered planning applications that waste their time and ignore key issues, e.g. conservation and access. They are organising workshops for planning agents so they understand the requirements for planning applications.

Penny Griffiths
Chair: The Winkleigh Society

Winkleigh Society - Poetry Competition - 2021

Here are the 3 poems submitted by the runners-up in the two highest age groups:

Poetry Competition (age 8-11) – Runner-up:

'Covid, Lockdown and Me' by Gracie Goddard

Learning, laughing, listening all day,
Waiting for the latest updates,
Waiting for the newest news
Trying different things,
Painting, baking and having fun,
Playing new games against my family,
Winning every time,
Walking around the village,
Jumping, laughing, cycling,
Phoning, texting my friends, saying see you soon,
Home school, live lessons, work all I did all day long,
Wearing masks, washing hands all we do all the time,
But now just a few days to go until I can see my friends and family,
is what I said every day.



HC Joinery
Bespoke Joinery Services

Harry Colgrave
Joiner

All aspects of joinery work undertaken.

Doors, windows, panelling, door canopies/porches, restoration projects, repair neglected doors and windows.

hcc2010@hotmail.co.uk
07517110668



Summerhayes, Ingleigh Green,
Winkleigh, EX19 8AT

GROUP C (age 12 – 16) – Runner-up:

'My friends all say they hated Lockdown' by Ava Corden

My friends all say they hated lockdown,
But I think differently.

I say it gave us precious time,
But they all disagree.

I think lockdown helped us see,
The difference we can make.
To save our oceans and help our trees,
In the simple steps we take.

During lockdown I realised,
How much we need our friends.
Our family, our neighbours too,
All help us turn 'round bends.

The books I read in lockdown,
As bewitching as can be.
I travelled to many different worlds,
Whilst drinking my mug of tea.

My friends all say they hated lockdown,
But I think differently.
I told them how it gave us time,
And now they all agree.

MDM
MID DEVON
MOTOR CO.
Exeter Road, Winkleigh, EX19 8JJ
Tel: 01837 83334
www.middevonmotor.co.uk

Poetry Competition (age 8-11) – Highly Commended:

'My Hero'. By Ava Jane Curtis

My Hero was gone,
Was this a con?,
Before he made me fly,
Now all I do is cry,
Behind their backs I got out his coat,
And every day it got more and more
soaked,
I felt trapped,
I was sad,
And I felt bad,
I couldn't do anything,
Apart from sing,
Sad songs,
For how much I longed
For my Dad.



**Local Family Run Residential
Sales & Lettings Agent**

**Call us for a FREE
no-obligation Valuation of your Property.**

01837 83393

info@howesestates.co.uk www.howesestates.co.uk

Sell your property from 0% and no upfront fees*

*terms and conditions apply

Heating, Cooking & Living.

- Stoves & Fires • Flues, Chimneys & Stove Installations
- Seasoned Logs • Range Cookers • Spares & Accessories



To see one of the largest selections of stove, fires and range cookers in the South West, many of which are live and on display, visit Rangemoors. Whether you want to add warmth and atmosphere to your living space or cook up a storm in the kitchen, we have the perfect appliance for you and your home.

Telephone 01837 680068
www.rangemoors.co.uk



Winkleigh Parish Church News

Here at the Vicarage, we participated in 'No mow May' - much to the relief of the lawn-mower in chief! It was wonderful to see a whole variety of wildflowers and grasses grow up, encouraging large numbers of bees, butterflies and other insects to put in an appearance. We've enjoyed it so much that large swathes of the garden are still long and flourishing. The other bonus of this has been that we have been able to mow in a labyrinth.

Labyrinths are different from mazes, they have only one route and contain no wrong turns; they are not puzzles but rather meditations and aids to prayer. Their use goes back to ancient times with examples being found on rock carvings, in Egyptian pyramids and in Roman tile patterns. One of the most famous medieval labyrinths is found on the floor of Chartres Cathedral in France, used by the monks for times of prayer and contemplation.

The one route allows those who use it to reflect on their journey towards the centre and then turning to go out into the world again. One of the most important parts of the labyrinth is the centre. The centre is a place to stop and to pause. To rest a while and just relax; a place to stop and notice.

We've placed a bench at the centre of ours, overlooking the pond, a place to sit and notice the amazing wildlife activity which is buzzing all around and to marvel at the wonders of God's creation. A chance to lay aside the busyness and things to do and to simply rest. Resting and taking time to stop is a very biblical action and an important discipline in daily life.

During his ministry there are several examples of Jesus going off to a quiet place to pray and to rest. A chance to escape from the crowds which followed him and to spend time with his heavenly Father. After months and months of not being able to do the things we enjoyed or which previously consumed our time, now restrictions are lifted the pace of life has once again increased. For some this might be a welcome return, for others a time of trepidation and uncertainty. We may find ourselves with suddenly full calendars and little time to spend on some of our valued pastimes of the past 18 months. We should find time within this to stop and to pause, to find quiet space and quiet times for rest and refreshment. This might be admiring the wonder of nature, enjoying a good book, simply listening to the sounds of the world around us or spending time in the presence of God. In the months ahead, do find time to rest awhile in whatever way works for you and enjoy finding some peace as the pace of the world increases.

Blessings, Helen

Revd Helen Blaine

01837 83710 or revhelenblaine@outlook.com

Former West Ham player joins Winkleigh FC as head coach

Colin Wall, former youth player for West Ham and professional player for Ipswich Town, Portsmouth, Barnet and Southend United has joined Winkleigh FC as head coach. Colin also played at semi pro level for teams in the South East for eighteen years. Colin's top level playing career was brought to a halt after the long-term effects of a serious back injury earlier in his career. He commented 'Following a long period of rehabilitation my determination and positive attitude saw me carry on playing at semi pro level for many more years until the long-term impact of the back injury forced me to finally accept that my playing career was over. Since finishing my playing career, I have utilised the many skills learnt through my time in sport and my own personal experiences, along with gaining a number of qualifications to become a highly successful personal performance coach working within professional football under Phil Brown at Southend United for 4 years'.

In 2018, after leaving his career as a professional personal coach during which time he obtained formal sports qualifications, Colin and his business partner wife concentrated on developing their own business: LeadEQ. LeadEQ has enabled Colin to use the knowledge gained during his sporting careers, in the world of business and also to 'keep his hand in' with professional sport. Their business provides unique solutions for management, leadership teams and individuals through his extensive knowledge gained during his sports career along with his experience gained from business partners within the equine world and leadership within retail at board level.

Also, Colin is an associate for Switch the Play Foundation Charity which helps sports professionals who are making the transition from and planning for their futures outside their designated sport.

Tony Bayley, Chair of Winkleigh FC and Captain Rob Knight said 'We are incredibly pleased to welcome Colin into Winkleigh FC and we all look forward to working with him in the future'.

Further information on LeadEQ and Switch the Play Foundation Charity can be found at www.leadEQ.com and www.switchtheplay.com.

Greg Goldsworthy

QUIZ NIGHT

In aid of Winkleigh Football Club and Winkleigh Youth Football Club

Teams of 6

Winkleigh Village Hall Saturday 16th October starting at 7.30 pm

WWMRFF - including Winkleigh Sports Centre

“It looks like we’re starting to get back to normal” (Steve Coleman).

Slowly and cautiously we are starting to believe that our usual lives and routines may be on the way back. We are not sure that things can ever truly be the same but Winkleigh is resourceful, resilient and a great place to be to face the future with confidence & optimism.

The Sports Centre is starting to be busier with its usual supporters. New activities are being developed including the craft & pottery room. (Look out for details on Facebook). The Sunday Car Boot sale is establishing itself & the Trustees are trying to develop a small scale work hub to utilise empty accommodation. It is also great to see that Winkleigh Football Club is back in action & Winkleigh Aunt Sally members have returned to their Sunday morning slot. It is particularly pleasing to see that the long established Youth Club has reopened its doors, thanks to all our volunteers who are making a great effort in this club. Big thanks to Rosemary Anstey who really is the driving force behind the Youth Club.

The tennis club has put forward a plan to improve their facilities and broaden their appeal. Well done to Joyce Maddocks who has made a very impressive start as fund raiser to help realise the ambitions of the Tennis Club. (see page 51)



Agricultural & Building Supplies Trade Counter

Tel: 01837 83492

Email: sales@southwestfixings.co.uk

- | | | |
|-------------------|-------------------|---------------------|
| • Fencing | • Nuts and Bolts | • Plumbing |
| • Timber | • Hydraulic Hoses | • Tools |
| • Oils and Adblue | • Boots/workwear | • Fixings |
| • Calor Gas | • Tractor and | • Fasteners |
| • Animal Health | Implement Parts | • ...and lots more! |
| • Batteries | • Drainage | |
| • Pet food | • Guttering | |

Delivery available!

It is a very busy time also in the outdoor play area with this year's refurbishment nearing completion. In addition the outdoor toilet block has been improved. It will always be what it is, but a group of volunteers spend a lot of time making sure that it is the best it can be.

The allotments are looking absolutely fantastic and the work of the biodiversity group is yielding impressive results. The work of this group is ongoing and it is committed to improving habitats and increasing biodiversity over the whole site. A brief summary of its achievements include: a plant survey around the Sports Centre, grassed area being allowed to flower to attract grassland butterflies, flower borders are being restored with a pollinator seed mix and a Nature Recovery Plan is being developed. The biodiversity group is supported by both Winkleigh Environment Group and Winkleigh Society.

At the time of writing, the annual cricket match is planned to take place soon. It has been moved once so let's hope that the weather is kinder to this much loved charity event.

In conclusion, the Trustees wish to thank all who support their work for the great village of Winkleigh.

Tom Radcliffe (Secretary)



The poster for Chulmleigh College features a blue header with a rainbow-colored bar. On the left is the college crest, which includes a shield with three fleur-de-lis and a banner below it that reads 'Nihil Quam Optare'. To the right of the crest, the text 'Chulmleigh College' is written in a large, black, serif font. Below the header, there are three photographs: the first shows the college building and a flagpole; the second shows two students in school uniforms looking at a book; the third shows a group of students playing a game on a grassy field. Below the photos, a yellow box contains the following text: 'We are delighted to invite prospective pupils and their parents/carers to meet our teaching staff and take part in activities across a wide range of subjects. Presentations by Executive Headteacher Michael Johnson & the opportunity to meet with SENDCo Laura Mackie. Please pre-register here <https://tinyurl.com/CC-Open-Evening-2021>'. At the bottom of the poster, there is a blue bar with the website 'www.chulmleigh.devon.sch.uk', the phone number '01769 580215', the email 'admin@chulmleigh.devon.sch.uk', and social media icons for Facebook and Twitter with the handle '@ChulmleighCollege'.

Chulmleigh College

We are delighted to invite prospective pupils and their parents/carers to meet our teaching staff and take part in activities across a wide range of subjects. Presentations by Executive Headteacher Michael Johnson & the opportunity to meet with SENDCo Laura Mackie. Please pre-register here <https://tinyurl.com/CC-Open-Evening-2021>

www.chulmleigh.devon.sch.uk 01769 580215 admin@chulmleigh.devon.sch.uk
@ChulmleighCollege

Winkleigh Village Hall

As the Covid restrictions ease, residents and visitors are beginning to venture out once more even if it feels a little naughty after a year and a half of lockdowns, facemasks, and hope. We were so pleased at the beginning of August to have a near normal market in the hall with lots of people visiting to buy local produce and goods, and to enjoy refreshments in the back meeting room.

We have had many positive comments about the work that has been done in the hall. The new kitchen has been installed – courtesy of Carl Beer and CB Property - and decoration completed. The back meeting room now has a bar fitted and has been completely redecorated including a new carpet. Thanks are also due to Clive Stringer (carpets and flooring), Rob Knight (plumbing), Tim Rhodes (electrics), Os Mustafa (electrics) and others for all the work and hours they have put in.

Bookings are once again picking up as confidence returns and we extend our thanks to all of our previous customers who have brought their organisations and activities back to the hall.

On Friday 10th September at 7 pm, in partnership with Winkleigh Fair, we are holding a Quiz and Pudding Evening. Details in the poster below. Ditch those Covid blues and come along with your friends and family to what will be a wonderful night.



WINKLEIGH VILLAGE HALL PRESENTS.....

THE FAIR GRAND QUIZ & PUDDING NIGHT

Village Hall 7PM
FRIDAY 10TH SEPTEMBER 2021

GET YOUR TEAMS TOGETHER AND COME ALONG FOR A GREAT EVENING OF TRIVIA CHALLENGES!

- £5.00 per person
- Max 6 per team
- Puddings Included
- Raffle Draw
- Licensed Pay Bar
- Prizes for winners & runners-up

To ensure your places please contact Tony or Kay
07946 490967 - 01837 83248
tonyaston1953@gmail.com

We are also putting the finishing touches to the programme of Movie Evenings which will be held each month on a Friday through the Autumn and Winter from October to March. We are hoping that by October we will have new softer seating to make viewing more comfortable. Keep an eye out for posters which will advertise the films, dates, and full details.

Regarding the chairs, we are seeking a sponsor who might be able to supply us with a lockable construction, which will be sited on the grassland outside the kitchen, in which we will be able to store circa 150 stackable chairs. If you, or your company, think that you might be able to help then please contact me on the details below. Once we have new chairs, we will be looking for any organisation who might like to relieve us of the existing plastic chairs.

Dates for the next few markets:

4th September – refreshments provided by Winkleigh Church

2nd October – refreshments provided by the over 60's group

6th November – refreshments provided by Winkleigh Bell ringers

Have a wonderful rest of the summer and let's look forward to what we all hope will be a more relaxed and comfortable autumn.

Tony Aston – Chair
07946 490967 - 01837 83248
tonyaston1953@gmail.com

PS: Reluctantly the Seaside Show has had to be cancelled due to low ticket sales, which is not surprising in the current post-restriction climate. Money for all ticket sales will be refunded. We hope to try and re-schedule the event for next year.



TEN ACRES VINEYARD CAMPSITE

- ⑩ **Free local wine deliveries** to Winkleigh and surrounding area. Fri 4 – 7pm.
- ⑩ **Guided vineyard tours & wine-tasting** From 1st May - 30th September 4.30pm every Saturday. Private group tours also available (minimum 6 people). Booking essential for all tours.
- ⑩ **Campsite and Devon Wine Shack** open 1st May - 30th September. For tents/ small campervans. Glamping tents also available. Booking essential.

Order wine and book glamping/camping online on our website.
Email/phone for vineyard tour bookings or enquiries.

W : www.tenacresvineyardcamping.co.uk **E :** tenacrescamping@hotmail.co.uk
T : (01837) 83892

Agricultural News - Westacre Farm Open Day

Known primarily for their rich Jersey milk and ice-cream, this Open Day, on a boiling hot day in July at Westacre Farm, gave visitors the opportunity to 'walk and talk' their farm and learn about the **Rowden Wildlife Project**.

There are a variety of different environments on the farm; large open grassland fields, small well-hedged fields, herbal leys, culm grassland, mature oak woodland, ponds, streams and the River Taw. The wildlife corridors have been created to link habitats of wildlife populations. More are planned. Old field boundaries have been re-instated as have rotational grazing techniques.

Chestnut fencing comes from locally grown and managed coppice rotation; environmentally friendly, long-lasting and wonkily authentic.

A working dairy farm, the Jersey cattle graze on culm grassland creating different heights in the sward which provides essential micro-climates.

Culm is one of the rarest habitats in the world and peculiar to North Devon. Long misunderstood and drained and sprayed almost to extinction, as industrial farming became the norm after WW2, this farm is bucking the trend and is restoring it as part of several habitat creation projects. It is also an invaluable carbon sink on a par with peat bogs. This year the owners have let it flower for the first time and the impact and increase in insects, moths and butterflies is a delight to behold as you walk around.

Many trees have been planted and this wood pasture creation is part of a silvopasture trial being carried out with the Farming and Wildlife Advisory Group [FWAG] and scientists from Rothampsted and The Organic Research Centre.

Interested? Want to be involved in helping with wildlife surveys of mammals, birds, reptiles and insects? info@rowdenwildlifeproject.co.uk

The aim of The Rowden Wildlife Project Team is to demonstrate to farmers and the public that wildlife can be promoted in a productive farming system.

Penny Griffiths

i Clean Devon Window Cleaning

WINDOW CLEANING, GUTTER CLEARANCE & CLEANING, FACIAS, SOFFITS & CONSERVATORIES.

Call Paul @ 07514 – 740712 for a no obligation quote.

Email paul@icleandevon.co.uk



[WWW.FACEBOOK.CO/ICLEANDEVON.CO.UK](https://www.facebook.co/icleandevon.co.uk)

Covering Winkleigh/ Chumleigh/ Dolton/ Roborough/ Hatherleigh & surrounding villages.

Our Devon County Councillor Writes



Since my last article in *Distinctly Winkleigh*, legal coronavirus restrictions have been lifted and I would like to thank everyone in Winkleigh and Torrington Rural for the magnificent efforts you have put in to help keep the virus at bay in our community. Throughout the last 18 months the people of Winkleigh, Torrington Rural, and Devon as a whole, have shown great fortitude in dealing with this virus and I know our efforts will continue.

I know the lifting of restrictions has been a cause of celebration and relief for some, while others have felt more anxious. It is easy to get very black and white about this, but I think a balanced approach is the right way forward. The removal of Covid restrictions has been good news for many of our local businesses, and especially for our hard-hit hospitality sector.

Nevertheless, I will continue to take precautions as and when it is necessary. I will keep my face coverings and wear a mask in future when it's appropriate. I will continue to take lateral flow tests before and after mixing socially.

At the time of writing, Covid infections have risen locally and are relatively high nationally. However, there has been a clear vaccine effect. In Torridge District on the latest available data on 6th August, the infection rate per 100,000 for under 60's was 412.8. For over 60's it was just 76.4 – and the latter figure is lower than the winter peak.

Thankfully, unlike in the winter, hospitalisations have remained very low, with North Devon Hospital Covid patients numbering so far in just single figures. It is clear the vaccines are working to prevent serious illness or worse.

The majority of those younger people testing positive are either unvaccinated or have had only one



THE SHIFTERS
Spirebourne Limited
Liquid Waste Disposal and Drainage Co.

EMERGENCY CALL OUTS

- Septic Tank/Cess Pool Emptying – Any Size
- Grease Traps
- Drain Blockage Clearance
- Various Commercial Liquid Waste Disposal Servicing
- CCTV Drainage Surveys
- Pump Repairs & Renewals
- Installation of Septic Tanks & Sewage Treatment Works
- Mantair Units

FREEPHONE 08000 855 185
spirebourne@hotmail.co.uk
www.spirebourne.co.uk

dose, so my message to anyone who either hasn't had a jab yet or has gone more than 8 weeks since their first dose, is to please take up your jab when you are offered it. The vaccines are safe and effective and will help to save lives.

Looking forward to the future, Devon County Council has submitted bids totalling more than £12 million to the Government's 'Community Renewal Fund', which is a new funding scheme that aims to support communities and businesses to recover after the pandemic. Devon's bid is made up of 16 projects across the County which have the potential to generate around 620 jobs, support the creation of 400 new businesses, and help 3,000 people to re-train.

Naturally I am keen to see our area benefit from these bids, and £3 million of these bids are concentrated in the Torridge area, with bids for the biosphere, agriculture, and projects to help upskill young people and self-employed workers. I have also made it clear to Council Officers at both Devon County Council and Torridge District Council that I expect, if these bids are successful, that residents and businesses in Torrington Rural will stand to benefit from this and the funding will not be channelled exclusively into the larger towns like Bideford and Barnstaple.

Local highways matters continue to be of concern and (to give just one example) I will again be raising the condition of Eggesford Road with Highways Officials having been out reporting potholes in the area in the days before writing this article!

Lastly, I was extremely disappointed that due to a combination of external factors it has not been possible to pursue the 'work hub' project at the Sports Centre. Nevertheless, working with District Councillor Simon Newton, I remain committed to this concept and will continue to lobby hard for a site to be found within Winkleigh as I believe this Parish is a logical place for a rural work hub to be placed.

After 18 months of our lives being dominated by Covid, I wish all *Distinctly Winkleigh* readers a safe, healthy, but above all enjoyable summer. I'm looking forward to finally enjoying Winkleigh Fair again!

As ever, if there are any DCC issues you'd like to contact me about you can contact me on Facebook at [facebook.com/cllrsaywell](https://www.facebook.com/cllrsaywell), ring 07886 446560 or email andrew.saywell@devon.gov.uk.

Brief Encounters of a Footballing Kind

In the early to mid-70's, I played football for two clubs: Tiverton Ladies and later Wolves Ladies. In those days of pre-FA involvement in the women's game, we were always scrabbling around for money to travel to matches and for kit. Sometimes we played in the men's worn-out strip, tucking up the sleeves and turning up the shorts. We were also constantly begging for pitches to borrow, let alone changing facilities and access to showers. We were a *rag, tag and bobtail team*, a very poor relation to the men's game.

In those days, we played in summer due to our frail little bodies not being able to cope with cold and we did not play the *offside rule* as our tiny feminine brains would not be able to manage this particularly challenging rule. Male guardians of the sport were constantly telling us that our hips were not strong enough, and that they would *pop out* if we kicked the ball too hard. Apparently, we would all develop breast cancer from taking the ball on our chests and be at risk of acquired brain injury from heading the ball. This last has since proven to be a risk to players of both genders and not only something for women to be aware of.

Aside from these concerns many male teams made it difficult for us to play. We were often told that we could not borrow the men's teams' pitches, even though they weren't using them in the summer on a regular basis. Many times, we would not be

allowed to use the men's changing rooms and had to arrive at the match in our kit and go home likewise or put clean clothes over dirty bodies. Often, we even had to go to the toilet behind bushes.

I must be honest, back in those early days the women's game was far inferior to the men's. We had not grown up playing football, so we had no early practice or experiences, but nevertheless some of us, I am proud to say, were determined to have a go and have fun despite having to endure the sexist remarks and barriers deliberately put up to make participating in the sport difficult if not impossible. The number of times male spectators would shout misogynist chants or ask us if our boyfriends or dads minded us playing,

Fiona's Café & Farm Shop

Call in for breakfast,
morning coffee & cake,
lunches and afternoon tea

Menu varies daily

Inside or outside seating

Plus

Shop for home-made and
fresh produce, fish and
frozen ready meals

Open from 10 am on
Tuesday to Saturday

along with other suggestions too offensive to include here.

At the acme of my *career*, I was asked to play in the England Team in a *friendly* against Sweden, as a trial. I was told that if I proved myself, I might be allowed to join the squad permanently and that they were fund-raising to play in India against the Asian League. I played centre-half and always enjoyed being at the back and giving the ball "some wellie". Pretty much the extent of my talents. We were still playing in the summer, and it was the very hot one of 1975 (*Editor's note: the year before the notoriously hot summer of 1976*). I don't remember much about my debut except that the heat was exhausting; we had no access to the changing rooms or water and most of the match I felt faint with the heat. At some point in the game the Swedish girls broke in mid field, and I had to intercept the ball and get it back in play for us. I remember facing the Swedish player and trying to tackle her when the next thing I knew the captain is flapping her shin guard in my face trying to give me air. Feeling very nauseous and hot I tried to sit up and then I promptly threw up all over her boots. As I was led off the pitch, I heard her say, "heat exhaustion - she'll be no good in India if she can't cope with summer heat here". That was the end of my career at a national level.

A year later, as a young teacher now holding an FA coaching award, I coached one of the house teams, Hardwick, at the Black County secondary school where I taught. There were six houses in this large comprehensive school and Hardwick House had



Under New Management

David & Teresa Invite You To Come And Take A Look

**We Have Added NEW Lines With Stock Arriving Weekly
And We Run A Loyalty Scheme**

Your One Stop Essential Shop

**OPEN Tuesday - Friday 9am - 5pm
Saturday 9am - 4pm
Sunday 10am - 3pm Closed Monday's**

**We Look Forward To Seeing You Soon
Unit 2 The Old Airfield WINKLEIGH EX19 8EZ
(Next To Jonesy's Cafe)**

come last in the school football tournaments for some years. In fact, there were rumours that the PE teacher assigned to Kinver, the winning house, at most sporting activities, used to watch primary school matches and select the most talented children for his house! Hardwick's performance was so dismal that no teacher assigned to Hardwick was willing to take on what was thought to be a thankless task.

Eager to please and succeed in my first teaching post I agreed and went out training and encouraging the boys every lunch time and Saturday mornings, trying to knock them into shape. At first, they were disheartened at having a Miss coach them. It was a lot of hard work and we had to ignore the teasing and derision of the other children (and staff) who thought that women should not play football and that Hardwick lads were shortchanged by having a woman coach. Nevertheless, I worked relentlessly and by the end of the season at the inter-school matches Hardwick House was the best performing team in the school. When the Headmaster handed over the school cup to the captain and praised my diligence as coach saying I'd worked miracles with the team, a young male voice piped up "Well we had to win didn't we Sir or we would never have heard the last of it having a woman for a coach?" "Yes" said another, "We had to practice every dinner time 'cus we got too much stick on the playground else."

At the end of term, the school magazine headline shouted **Hardwick Hurricanes Hamaze us all!**

What a difference those intervening years have done for the women's game! Our Lionesses make us proud, and I am pleased to have been an early, if inadequate, trail blazer.

Angela Findlay

Winkleigh Church Wives Group

It is nice to be able to write a report with no restriction on us meeting together inside the Village Hall.

Therefore we will be holding a meeting on Monday September 13th at 2.30 pm in the small room of the Village Hall.

It is uncertain at this time whether we will be able to hold a service in church first.

When we have more details I will be putting up notices with the information.

If you wish to bring along your own cup or mug please feel free to do so.

I look forward to seeing you soon.

Janet Magor, Secretary

Local Community Trusts – 2021 Grants Available

The **Wright Fund** and the **Old School Fund** are long-established local community charities, administered by members of the All-Saints Church Parochial Church Council and elected trustees.

Each year money is set aside as either grants or donations to residents and organisations of Winkleigh Parish for a range of specified educational, recreational or other special needs. At present, each fund has £1,000 available to be awarded in the form of individual grants/donations of up to £500 per applicant.

The **Wright Fund** (registered charity 205397) can assist recognised local organisations or individuals with grants for recreational or leisure activities, or help relieve individual and family needs. The **Old School Fund** (registered charity 306918) provides financial assistance to help young residents under the age of 25 pursue post-secondary education or training.

If you are interested in applying for funding from either charity, or would like additional information, please pick up an information brochure available within All Saints Church, or by contacting the Revd. Helen Blaine, Winkleigh Mission Community on 01837-83710 or revhelenblaine@outlook.com or Collin Gibson, Treasurer, All Saints Church at 01837-680172 or lamcrg@aol.com.

The closing date for all applications is 30th September 2021. Funds will be made available from 1st. November 2021.



Twixtmoors

~upcyclers~

Autentico Paint Stockist

Used, Upcycled and Painted Furniture

Reupholstering and Recovering Chairs, Sofas and Ottomans

Workshops and Training (at your place or ours)

Bespoke Commissions

Sandblasting and Stripping

Tel: 01837 83148

www.facebook.com/twixtmoors

info@twixtmoors.com

www.twixtmoors.com



**Unit 2
The Airfield
Winkleigh EX19 8DW
(on the Bedwell site)**

Opening hours - we are here most days from 9 am til 6.30 pm

Should the front roller shutter door be down, please use the first entrance on the left hand side of the building

Celebrating the Royal British Legion Centenary



Saturday 15th May this year marked the Centenary of the foundation of the Royal British Legion. To commemorate the centenary, Ron Fletcher, together with some of the remaining members of the Winkleigh Branch (which was founded the same year, but closed down in 2015) met at the War Memorial in the Churchyard to lay a wreath at

noon. When the Church Clock struck the hour, Ron laid a wreath and spoke a few words about the history of the Legion, before asking those present to pause in silence in remembrance of those who had died during the last hundred years and particularly those in the last two years. Representatives of Winkleigh Parish Council and the Winkleigh Society were also in attendance.



John Short

Professional Interior & Exterior
Painting and Decorating

Clotworthy House, Torrington Road,
Winkleigh, Devon, EX19 8HR

Telephone: 01837 83709

Business and Events News Bulletin - Update

Uncle and Ozzy's have closed as of last week (at time of writing) citing they were unable to come to an agreement with their landowner and despite being successful at the venue at Seckington Cross they have decided to move on.

For anyone missing their pizzas, **The Seven Stars** is now supplying a good range which includes 15 varieties of pizzas, along with nachos, jacket potatoes, ploughman's lunches and sharing boards daily from 5pm-10pm.

Congratulations to **The Kings Arms**, who's Facebook Page shows they "have been awarded the Trip Advisor Traveller's Choice 2021 award."

Wright and Proper has re-opened afterlock down lifted and is running as usual but with slightly different seating arrangements and Keith and Fran are in fine form. "If the tables and chairs are outside the front they are open".

Ben at Londis says "Thank you to all who have supported the shop during lockdown." There's a new face in the staff at The Bakery Store, as previous Manager at Kings Arms, Tony Kennard, takes to the trolleys and tills.

Parishioners will be pleased to know that the **Post Office** is continuing to run in Winkleigh but does still need our continuing support; thank you to all who have helped to keep it going. Don't forget that it is also a weekly drop-off and collection point for laundry and dry cleaning.

Do support the monthly **Village Market** in the Village Hall on the morning of the first Saturday of the month. I popped along on Saturday (despite the weather) and won the Summer Hamper raffle! You need to be in it to win it!

Congratulations also to **Clare Bolt Bespoke Cakes** on receiving her 5 star award last month.

The **Mad Butchers** is doing a fantastic line in scotch eggs. My favourite is sweet chilli.

A new Business has opened this week in the Sports Centre offering Laser Etching, Engraving and cutting. **Tracey Williams runs Synergy Gifts**, by appointment only on 07493 506907 or email: hello@synergygifts.co.uk.

Pet and Garden Stores on the Airfield is under new management (see Advert on page 18) as Teresa Moon and David Evitts take over from Steve and Shirley Leahy. In addition to the items previously supplied, there is now a wider range including all manner of exciting Redmoor seeds, spices and herbs. I was able to get pine nuts I needed for a recipe. There are now 5 stands of card displays and Teresa has said she gets regular deliveries so if customers require something in the ranges they cover that isn't there, she can get it in for them, just ask. She is also selling plants and will shortly be selling spring bulbs. Talking of bulbs, David's speciality is lamps and batteries, so they can offer a vast range of those items too!

My recent visit with my granddaughters, aged 3 and 6, to **Woolley Animals at Venton Farm** was a great success. They each bought a 50p bag of animal food in the shop and spent at least 2 hours happily meeting, stroking and feeding alpacas, miniature ponies, beautiful black and white donkeys, a plethora of goats and baby kids, varieties of friendly sheep, bunny cuddling, stroking baby ducklings and generally enjoying and learning from the experience. Well worth a visit, and there are a lot of other activities there throughout the day, as well as a lovely little cafe and shop that unfortunately we didn't have time to stay for on this occasion. Staff were fantastic.

Rachel Goldsworthy



Please stand up for nature in northern Devon

And help tackle the ecological emergency



**Partners of North Devon's UNESCO Biosphere
have launched an ambitious Nature Recovery
plan for northern Devon**

We need urgent local action to help nature to recover. This is your opportunity to participate! To sign the Declaration and read the Nature Recovery Plan please head to the Biosphere website: www.northdevonbiosphere.org.uk/nature-recovery-plan

Please spread the word and encourage others to sign the Declaration!

 @northdevonbiosphere  @ndevonbiosphere  @northdevonbiosphere



Winkleigh Singers Concert – A Review

The Winkleigh Singers concert on Saturday 10th July in St Michael's Church, Great Torrington, was a well-received return to live music and indeed a 'Joyful Concert'. The programme included choral works by Handel as well as organ works played by Peter King, a world-class organist.

The socially distanced audience meant that, like everyone else, we were asked to sit in a designated pew. We were placed at the front behind the organ but what a seat it was! We had little view of the choir as we were behind a pillar, but the acoustics were exceptionally good and Peter King was a delight to watch at close quarters, giving us true mastery to see and hear on the famous Father Willis organ.

Although the choir numbers were smaller than in pre-Covid-19 concerts, the choir was on top form under the direction of Musical Director Roland Smith. Government restrictions also meant that there could not be an interval so the choral and organ works were interspersed which worked very well. All in all an enjoyable evening out.

Alison Reynolds, Jo & Godfrey Rhodes

MTF CONTRACTING

A local experienced service for all your needs



- Agricultural Fencing
 - Garden Fencing
 - Flail Topping
 - Tree Pruning / Tree surgery
 - Wood chipping
 - Ground works / Landscaping
 - Fully Insured
- Free no obligation quotes



Call George
Tel: 01837 83325 or M: 0777 207 8028
Moortown Farm, Winkleigh, EX19 8HA
www.mtfcontracting.co.uk

Winkleigh YFC



It is now one of the busiest times in the year for farmers with harvest and the preparations for the next crops.

Since I last wrote, Covid restrictions are relaxed for YFCs. We have had another few games of rounders and even held an online auction. This has raised money for club funds and as well as for Farms for City Children.

Devon YFC had a marquee at Devon County show where members showed off their talent in a variety of classes. Winkleigh entered the club cubicle which this year's theme was 'Back to our Roots', backing British farming. I entered a few classes and received a couple of prizes.

Our next event is coming around the corner, Winkleigh and Bow YFC Charity Tractor Run in memory of Matt Vanstone. The event will be raising money for FCN (Farming Community Network) and the two Young Farmers Clubs. It is on the 18th September 2021 10.30 am for 11 am start. It is starting in Devon Plant Services on Winkleigh Airfield with the route taking us to Langham Chapel, Petrockstowe, Sheepwash, Hatherleigh, Monkokehampton, Taylors Down and back to the start for food. To find out more information on the event or book a tractor in please contact James on- 07541318077, or Jack on 07702574099

If you would like any further information regarding the Senior club, please contact James Pearce on 07541318077; for information regarding the Mini club, please contact Danielle Bradford on 07544 940197. Alternatively, please take a look at our Facebook pages for updates: 'Winkleigh YFC' or 'Winkleigh Mini YFC'.

James Pearce



**General Building Works
Period & Listed Building Renovations
Maintenance & Repairs**

For a free, no obligation estimate, please call:

01837 83890 • 07541 002017

info@obcd.co.uk www.obcd.co.uk

Winkleigh Singers News

At the time of writing, The Winkleigh Singers are on Summer leave. They plan to start rehearsals on Monday evening, 6th September. The choir has risk-assessed its activities and the venue is to be confirmed as either Umberleigh or South Molton to allow space for safe distancing and avoid spread of infection. More detail will be announced via the choir website on or around 20th August.

The choir has space for a few extra enthusiastic singers who are welcome to join for a three week trial period at any time.

Information can be found at www.winkleighsingers.org.uk

Winkleigh Morris News

Subject to any Covid restrictions in place at the time, Winkleigh Morris is planning to hold practice sessions at the Community Centre at 8 pm every Tuesday from 5th October until the end of April, unless notified otherwise on our website. If there is sufficient interest in an earlier start, we could begin the session at 7.30 pm.

We welcome new dancers, male or female, of any age from 9 upwards. No previous experience is necessary. For minors we would ask that they are accompanied by a parent or other responsible adult. Musicians are also welcome - squeezebox, fiddle and whistle are the most suitable for Morris but other instruments are possible.

We will still be dancing out at some venues during September. Details under 'Events' on our website

For more information or queries please contact Colin on 01363 877216 or Angela on 01837 83219, or see our website www.winkleighmorris.org.uk



War Horse 10K

Sunday 19th September 2021 at 11am

Iddesleigh EX19 8BG

Stunning 10K race with cracking views of Dartmoor.

The race starts and finishes in the beautiful village of Iddesleigh and will include some private land.

This is a scenic run, 90% of which will be on the road.

Entry fee £17 (to include a t-shirt)

All money raised will be going to the North Devon Hospice

For more info and how to enter see our Facebook page:

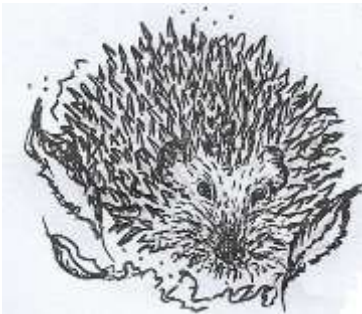
War Horse 10, or phone 01805 804347

Hedgehogs – Danger of Extinction

Since the year 2000 we have lost half our rural population of hedgehogs and in urban areas it is 30%.

Voted Britain's most popular mammal and once a common sight throughout the land, it is now on the red list of endangered species.

Parliament debated this critical situation on **July 5** as a result of a million plus petition spearheaded by **The British Hedgehog Preservation Society**. Hedgehog champions spoke passionately about the work they do in hedgehog rescue and recovery. They flagged up the need for a **national recovery network**, as the main driver of population decline is loss of habitats and wildlife corridors.



Sketch by Elouise Garland

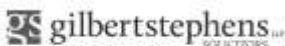
Hedgerow removal, use of pesticides, building on agricultural land, strimmers, closed fences and turning front gardens into parking lots have all spawned a hostile environment for our favourite mammal.

In the Wildlife Countryside Act the hedgehog is on a **schedule 5**. Several MPs spoke in favour of it going up to **schedule 6** giving it the same protection as bats in the planning process. **Without intervention, within 10 years the hedgehog is headed for extinction.** The

speakers did not pull their punches.

This wide-ranging, detailed and constructive debate spearheaded by passionate hedgehog champions can be viewed on the Hedgehog Street website or the BBC parliamentary channel.

Penny Griffiths



**When you need
advice we have
the solution**

**Call our Crediton office
01363 77 55 66**

Manor Office, North Street, Crediton EX17 2BR

Other offices at Exeter, Okehampton,
Budleigh Salterton, Ottery St Mary and Sidmouth.

Visit **gilbertstephens.co.uk** for more information

Gilbert Stephens LLP is authorised and regulated by the Solicitors Regulation Authority (nr: 536070)

Letter to the Editor



CLIMATE EMERGENCY and ZERO CARBON HOMES

As a concerned parishioner, I introduced these subjects in the public session at the Parish Council meeting held on 28th July. I have been told that, as public statements are not included in the minutes, I should submit a written statement so that it can be put on the agenda at the next meeting in September.

In view of the ever-increasing devastating signs of Climate Change we've all seen happening: Super high temperatures, Mega Wildfires in Western Canada, Australia and USA and just now in Greece and Turkey, as well as heavy rainfall in Germany, India and China causing massive flooding and loss of life; Ice sheets breaking away from the Arctic and Antarctic poles; Permafrost melting in Siberia; Confirmation that the Amazon Rainforest pumps out more carbon than it absorbs, and much more.

In view of the above signs, my questions to the Parish Council were as follows:

In December 2009 the Winkleigh Carbon Reduction Report was issued by the University of East Anglia. Was this acted upon? What happened?

In 2019 Winkleigh Parish Council, Torridge and Devon councillors declared a CLIMATE EMERGENCY in Winkleigh Parish, pledging to REDUCE the Carbon Footprint by 2030 and NOT INCREASE IT. What does this mean? I hope it means that nothing that will increase the carbon footprint of the parish can be accepted? What plans have the WPC created to substantially REDUCE the Carbon Emissions by 2030? Winkleigh Environment Group has done sterling work planting trees (thousands more needed) and wild flowering verges.

Has the Parish Council contacted the developers of the three designated building sites to ask about their plans to future-proof their housing and only build zero carbon houses? Have Torridge and Devon Councils received emphasis from WPC for Zero Carbon Housing only?

We are told "we cannot stop housing" so we must stop the increase of Carbon Emissions in our parish.

We must insist that all houses/buildings, etc. are ZERO CARBON and that they MUST NOT use Fossil Fuels (Gas of any kind, Oil, Coal or wood) but alternative sources of energy. I would also hope this would be countersigned by our Torridge District and Devon County Councillors (as they were at the original declaration).

In June Torridge released a statement supported by all Torridge councillors, saying the district will be Carbon Zero by 2030. That is only 9 years away! Therefore, by default, Torridge must accept an objection from WPC to any current development that is NOT ZERO CARBON.

The average carbon footprint of Winkleigh was 13.07 tons per person per year in 2009 = 13,000+ tons. That is without the extra Industry on the Airfield and all the extra heavy traffic associated with SW Wood. Now twelve years later in 2021 it is substantially more and will continue to increase in the future unless something is done urgently. How can this be considered to be a reduction?

In my mind the Winkleigh Parish Neighbourhood Plan missed a great opportunity, as it would have been a good vehicle for WPC to specify that zero carbon developments are all we will accept now and in the future.

180 houses equal about 360+ people and about 200+ more cars equal tons more Carbon per year. Don't forget the traffic as these extra people will probably have to go to work elsewhere using their cars.

Please, I ask everyone who has any concerns at all for our future to attend the next Parish Council meeting to be held on Wednesday 22nd September 2021 starting at 7.30 pm in the Community Centre! Only two members of the public not on the Council attended the last one.

Name and Address supplied



AIRFIELD
**General Maintenance
& Repair Garage**

- MOTs • Vehicle Diagnostics
- Clutches & Cambelts • Brake & Brake Repair
- General Maintenance • Air Conditioning
- Servicing • Bodywork & Restoration



01837 682 678
www.airfieldgarage.com

Events Diary – 2021

All dates & details are PROVISIONAL at the time of going to press and depend on the ongoing Covid-19 situation.

Please send details of your events to articles@distinctlywinkleigh.co.uk

September	
1 st from 2 – 4 pm	Memory Cafe – Community Centre
4th—CANCELLED	Great British Seaside Show,— CANCELLED
4 th 10 am - noon	Saturday Market + refreshments, Village Hall
6 th starting at 7.30 pm	Winkleigh Singers Rehearsals start at Umberleigh or South Molton. See website for confirmation
10 th starting at 7 pm	Winkleigh Fair Grand Quiz & Pudding Night, Village Hall
11 th – 26 th opening times vary (see posters)	Devon Open Studios Art Trail. North Tawton, Bondleigh & Bow
13 th from 7.15 pm	Hallelujah!!! Open evening - Okehampton Choral Society at Fairplace United Church, Okehampton.
15 th from 2 – 4 pm	Memory Cafe – Community Centre
15 th starting at 2 pm	Winkleigh Society Committee Meeting, Sports C
18 th 10.30 am for 11 am start	Winkleigh and Bow Young Farmers Tractor Run starting and finishing on Winkleigh Airfield at Devon Plant Services
18 th 2.30 – 5.30 pm	Bug Hotel Workshop – Sampford Courtenay Village Green. See: www.sampfordcourtenay-pc.gov.uk
19 th starting at 11 am	War Horse 10K Run. Iddesleigh EX19 8BG
October	
2 nd 10 am - noon	Saturday Market + refreshments, Village Hall
6 th from 2 – 4 pm	Memory Cafe – Community Centre
20 th from 2 – 4 pm	Memory Cafe – Community Centre
November	
3 rd from 2 – 4 pm	Memory Cafe – Community Centre
6 th 10 am - noon	Saturday Market + refreshments, Village Hall
17 th from 2 – 4 pm	Memory Cafe – Community Centre

Winkleigh Fair Programme of Events

Here is a brief summary of the Fair Week Programme by Sarah Goody. If you have any queries please contact Sarah on 01837 83829 or email her on sarahjanegoody@googlemail.com.

Saturday 4th September: Fun shoot at the Sports Centre from 12 pm (last shoot 4 pm).

Sunday 5th September: Opening Ceremony in the Square:

3 pm - Crowning of the Fair Princess and open-air service with Winkleigh Church followed by a community tea.

Wednesday 8th September: Vintage Car & Vehicles of Interest Evening in the Square 6 - 9 pm.

Friday 10th September: Quiz in the Village Hall – starting at 7 pm.

Saturday 11th September: Fair Day:

Doors Open at 12.30 pm - Flower and Produce Show in the Village Hall.

2 pm Auction of produce from the show.

3 pm Games and Activities in the Square.

6 pm Family Disco by Abstract Dragon.

8 pm Live Music with the Dr Love Experience.



Qixx

Winkleigh

01837 83229

Electrical Contractors

- Rewires, New Builds, Extensions
- Consumer Unit Upgrades
- Showers, Cookers, Heating
- Internal / External Lighting
- Sockets & Telephone points
- CCTV & Networking
- Testing & Inspection (inc PAT Testing)



Margaret Dent RIP



Margaret Dent, who had lived in The Square for 61 years, passed away peacefully at home in May. She was born in Braunton and worked in the Lloyds Bank in Barnstaple for 11 years. One evening, she went to a dance at The Commodore Hotel in Instow and met Harry Dent: it was love at first sight and they married in 1960.

Margaret joined her husband at Hillmans. It was initially a rather primitive existence as Harry was busy setting up the veterinary business and had not done much DIY! There were no floors in part of the house

and only one tap! Mum threw herself into loving the house back to life and making a home for the next 32 years together and a further 30 years after her beloved Harry's death.

She devoted herself to running the practice. In those days, farmers did very little veterinary care themselves and the phone often rang from 5.30 in the morning until midnight, 7 days a week! She knew all the farmers' voices on the phone and never needed to ask who they were. She did all the bookwork and the nursing, as well as feeding umpteen vets who passed through. After 20 years' service, she asked Harry if she could have a day off a week and it was granted!

In the early years, there were lots of parties, Hunt Balls and she even won the women's stilt race at Winkleigh Fair! She had a lucky gene at games of chance and once was asked to retire on a bagatelle game at Barnstaple Fair after winning continuously for 40 minutes!

In 1991, whilst digging the garden she found the bronze seal of the Archdeacon of Exeter. It was thought to belong to Thomas Barrett (approx. 1580), a man known for his views on witchcraft and sorcery.

Margaret could best be defined as supremely elegant and very busy; something most of us would find hard to combine. She loved her social life in the village and her bus trips and often said she had no need to travel abroad as she had everything she needed locally. Despite being on her own for the last third of her life, she never once complained of being lonely or sad. She took great comfort in the village around her and often used to say she would never change a thing.

Margaret, you have been a loving and wonderful friend Mum and Granny and we shall all miss you so very dearly.

A service to celebrate her life will have been held in Winkleigh Church on August 25th.

Patti Cree

From Winkleigh to Torbay

My ancestor John Robins was born in 1787 in Winkleigh and married on the 23 March 1808. He and his wife Mary had five children. Their eldest child, John Robins, was born in 1810 and lived on the outskirts of Winkleigh at West Ashley, Chittlehampton and later at Babbages. John's third child was George Robins who was born in Winkleigh in 1815 and he moved to Torquay, where on the 23 April 1845 he married Betsy Pugsley. George and Betsy had six children the fourth of whom was William Robins.

William became a member of the fledgling Salvation Army in Torquay at a time when its religious freedom was not assured. This was mainly due to opposition from those with vested interests who used the law to stop them, aided by the violence of the 'Skelton Army'. Consequently William was one of the Salvationists who was arrested for his faith and imprisoned for seven days in Exeter Jail. His story is told in a booklet called 'Bound To Win The Day'. A plaque in the inner harbour at Torquay marks the place of his arrest and acknowledges his courage.



William and his wife Amelia had eight children the second of which was my grandfather William Robins. William was a lifetime servant of the Great Western Railway and in the early years of the twentieth century he acquired a lease on land at Saltern Cove in Torbay. Here, one of William's sons built a holiday chalet, the most idyllic of places. This story is told in another booklet 'Saltern Chalet'. The 2021 summer edition of This England magazine also features the history of Saltern Chalet.

Copies of either booklet can be obtained from *Martin Robins*, Glebe Farm, Lower Stanton St Quintin, Chippenham, Wiltshire SN14 6DB; phone 01666 837747; email martinrobins@btinternet.com.

RAY SQUIRE CONTRACTING WINKLEIGH

Hay-making, Grass mowing, Turning, Rowing up,
Small bale baling & Topping, Hedge Trimming

Give us call on – 07912316679

Hollocombe Community Group update: Autumn edition

Hollocombe Community Group now has 90 members on the Hollocombe Community Group Facebook site and continues to be an important communication link across our hamlet. We know we can reach out to each other for help for all sorts of issues including lost pets (happily found), recycling queries and faster broadband discussions.

Produce and items for sale including plants, eggs, marmalade, jams, chutney, cakes, biscuits, DVDs and books are offered for sale and/or charity in our Hut. We continue to support Okehampton Food Bank with our quarterly charity donations.

Cllr Mercer provided us an update from Winkleigh Parish Council which included news about the approved Neighbourhood Plan and the proposed new signage for Hollocombe. As well as being prettier, the new signs are intended to remind drivers, etc. that they are entering a populated Hamlet (with children and animals), rather than a place to speed through.

Bel approached Winkleigh Parish Council about having a Defibrillator located in Hollocombe, following an emergency which necessitated a Defibrillator having to be brought from Winkleigh to Hollocombe. The Council has agreed to fund this request and now a suitable location has been identified we should see it here soon. South West Ambulance will offer training so we can learn how to use the Defibrillator. Fantastic news!

We recently supported the England football team in style with Helena kindly decorating our Hut and Bel making wonderful cookies and cupcakes. They were absolutely delicious (especially the Mars cookies 🍪🍪).



Kim regularly updated us with information about our local fauna and flora including wildlife events arranged by organisations locally including Devon Wildlife Trust, Devon Local Nature Partnership “Wild About Devon”, and North Devon Biosphere “Pledge for Nature” (wildflower rewilding). Here are a few photos of beautiful Hollocombe (credits – Kim, Bel, Sue).



Stay safe and take care!

Sue Dally

JOSH NOON
TREE SERVICES
TREE SURGERY &
LOW IMPACT FORESTRY
QUALITY SEASONED LOGS
& KINDLING FOR SALE



 **01363 83908**
 **07792 906258**

Need Help In The Garden?

RHS Qualified, Experienced Gardener

All Aspects of Garden Maintenance
Planting Ideas
Year Round Reliable Service

Call Maxine on 01837 680039 or 07815 309023



From our Archives – DW 9 Editorial – Then & Now!

DW 9 was published in Spring 2004 with 36 pages. Its Editorial was as follows:

“Although Distinctly Winkleigh is only published every quarter, the amount of time it takes to produce each edition is substantial. Firstly we have to deal with the raw material, kindly sent to us by our contributors or originated by ourselves. Once the text is inputted it has to be designed and laid out and then needs to be proofread by several people (to check its content and balance). Amendments are made and the final artwork prepared, delivered to the printers and then collected when the copies are ready. After this the initial 600+ copies for house-to-house distribution then have to be collated ready for distribution. This is a time consuming task (but one that is sometimes lessened by opening a bottle of something)! We then rely on our trusty troupe of willing volunteers to tread the streets in order to get the newsletter through the letterboxes of the local houses and businesses.

Due to the extent of these tasks we have to set a realistic deadline for submissions which allows us to get the newsletter out on time. We welcome the contributions that people send in, whether they are articles or letters, expressing personal opinion. In keeping editorial control over this process within the pages of Distinctly Winkleigh, we aim to reflect the views of the local community in a balanced manner. In the past we have occasionally allowed late submissions or additions to be included as a separate leaflet. Due both to the time it takes to add these to the hundreds of individual copies, as well as losing control over the editorial content, we made a decision after the last such occurrence to accept submissions for inclusion in the bound pages of the newsletter and by the deadline only. This way we might just keep our sanity!

The Editorial Team”

Most of the process remains the same, but there are now a few differences:

- DW 9 did not have advertising; it was funded by subscriptions and sponsors. Now there is one sponsor and 25 to 30% of the content is advertising, so the editorial team has to deal with invoicing and advertising management. It is thanks to the support of our advertisers that DW is able to continue;
- DW 9 had a print run of 600+ but 1000 copies are now printed;
- Most articles and adverts are now submitted by email not post;
- The printed copies are now delivered to us rather than being collected;
- A number of copies are also now posted to properties in outlying areas.

Godfrey Rhodes

Transitions' Project Wellbeing and Community Event

On June 29th, the WisErmoney Partnership and West Devon Community & Voluntary Service (CVS) hosted a community event in Winkleigh Community Centre to share information about local services and organisations in Winkleigh. Observing current Covid restrictions, we had 16 organisations taking part and 50 people involved in a variety of ways. Unfortunately we were not to know that our pre-booked event would coincide with an England football fixture, so we knew on the day that footfall was going to be lost to football!

Despite this we had a positive event, rounded off in fine fashion by the Winkleigh Morris Dancers. All of the stallholders felt they had made new connections, and members of the public were very enthusiastic at the range of stalls present and the useful information they offered. Free refreshments provided by Made-Well CIC from Hatherleigh were also much appreciated!



For further information, please contact Julie Matthews on julie@navigatecharity.org.uk or Billie Burnett on volunteering@westdevoncvcs.org.uk

WINKLEIGH AERIALS

0800 0930 625 Mob 07970 963450

UPGRADED AERIALS
FILTERS TO REMOVE INTERFERENCE



City & Guilds Qualified



AXA Insured

Trade member for over 40 Years

Discount applied for Pensioners. Free surveys

Wifi - Cctv - Camera to your TV - Freesat - Dab/FM

Also: 2nd or 3rd Aerial points installed. New TV's supplied & set up

Winkleigh Shops, Trades & Businesses in 1920

What range of shops and businesses would have been around in Winkleigh 101 years ago?

It's interesting but not surprising that many trades & shops listed below have long since disappeared:

Two Blacksmith workshops: H Mitchell and E & F Jones. **Coal Merchant:** A H Wonnacott. **Shoe Shops:** Mr Nethercott & J Saunders. **Harness Maker:** Mr Tucker of Dial St. **Drapers:** Mrs Horner & Miss W Letheren. **China Shop:** Mrs Ridd & Mr Buzzacott (goods delivered by donkey cart). **Tailor:** Mr Rayment & Mr Turner. **Dressmaker:** Mrs Mitchell "Paradise". **Newsagent:** Mr & Miss Newcombe of The Square. **Seedsman:** Mr H Rose of Newtown. **Sawmills:** Mr J Baker & Sons of Newtown. **Cabinet Maker:** Mr Francis & Mr Mitchell. **Sexton:** Joseph Dickens. **Fishmonger:** (delivering) Mrs Cole of Barnstaple St. **Sweet Shop:** Mrs Saunders & Miss F Saunders. **Carpenter:** Mr F Symonds of Castle Cottage. **Rate Collector:** Mr C Spillar of Elm Cottage. **Lamp Lighter:** Mr W Boundy. **Baker:** Mr J Letheren.

Some businesses have now moved to other addresses: **Vets** from Newtown to The Square. **The Butcher** (Mr Isaacs) had his shop at Clotworthy. The **Headmaster** (Mr R G Symonds) lived in The School House adjacent to the Board School in Castle St. The **Policeman** (Mr Newton) lived in The Square.

W.D & S.J.CARNE

*Independent Family Owned
Funeral Directors*

Established over 60 years
Personal Attention Day and Night



Samantha Colgrave

Summerhayes, Ingleigh Green,
Winkleigh, Devon, EX19 8AT
Email: samjcarne@outlook.com
Tel: 01837 680199

Pre-arranged and Bespoke Funeral Plans
Available

Other Businesses at the time included: **Undertaker:** Mr G Mitchell. **Garage** (E Saunders & Co). **Three Grocers shops:** W A F Collihole, Mollie Brealeys & Mr Farleigh.

The Reverend Snelson Skenton was **vicar of All Saints**. The **Postmistress** was Mrs Oxenham. There were **four places of worship:** The Parish Church, Methodist Chapel, Wesleyan Chapel & The Wesley Chapel.

Three Public Houses were listed: The Winkleigh Hotel, The Kings Arms and The Ring of Bells. No mention of The Seven Stars; it is thought that in 1920 it was not operating as a pub but became licensed later. The Ring of Bells burnt to the ground in 1968 and the Winkleigh Hotel was later converted to residential accommodation.

The information for this article was taken from a document of the late Mrs K M Short shown to me by William Hocking (a nephew of Mrs Short). The notes were made to help identify the various trades and businesses when the family moved to Winkleigh from Cornwall in 1920. No Yellow Pages or Information Directory in those days!

Phil Griffiths & William Hocking.

{Editor's note: Please let us know if you can add any more information or have photographs of the early 1920s by emailing us at articles@distinctlywinkleigh.co.uk.}

Winkleigh POST OFFICE

~ Not just a Post Office! ~

Large range of Greetings Cards, Gift wrap & Tags

Toys & Stationery, Photocopying

Business & Private Banking

of Cheques and Cash

Laundry & Dry Cleaning

Travel Money

Car Tax

Mobile top-ups & electric key charging

Cash Withdrawals at the Counter

Open 8.30 am-5.00pm Mon-Fri

9 am-12.30pm Sat

01837 83427

Owner: Tony Bayley

News from Winkleigh Parish Council

Winkleigh Neighbourhood Plan: I was really pleased to note the excellent turnout of voters to endorse the Neighbourhood Plan. YES – 397, NO - 41, Turnout 32.28%. The Neighbourhood Plan was the final document in what was years of hard work, which began years before with the Community Plan (2014) and The Village Design Statement (2016). As the NP has been agreed by the electorate it now becomes part of national and local planning legislation and must be considered by developers. Unfortunately, previous outlying permissions are not affected by our plan, but all future ones will be.

My thanks go to all those involved in preparing the plans, both present and past participants and most especially to the people of Winkleigh who by turning out to vote have given the plan legitimacy and credibility.

Other News: The Covid Support group has now ceased to operate, but there are ten or so volunteers coordinated by myself who are willing to assist those who need help for other reasons. The Covid email has also ceased but if you need help you can email me on angela.findlay@btinternet.com; or ring 01837 682616 or 07455365144.

It is my sad duty to report that Councillor Alan Jacobs resigned from the council after 8 years of diligently serving the parish. Alan will be very much missed, and I would like to take this opportunity to thank him for his hard work and wish him well for the future.

Alans's resignation leaves us with a vacancy on the Parish Council, so if you would like to get involved in your community and be a democratic voice for your parish then please think about joining us. If you would like an informal chat about what is involved in being a Councillor, then you can ring our Parish Clerk 01837 89095 (Mon, Wed, Thurs 10-4 pm) or email winkleighpc1@btconnect.com;

A defibrillator for Hollocombe has been purchased and will shortly be installed on a wall in Shute Wood. Thank you to Belinda Creed for highlighting the need for a defibrillator in Hollocombe and agreeing to 'host' the defibrillator cabinet and the cost of the small electrical charge.

The defibrillator in The Square, Winkleigh is being relocated to the outside wall of Londis due to weather exposure and we thank Red Hanlon for agreeing to host the defib cabinet and pay for the small electrical charge. On behalf of residents, we also thank District Cllr Newton who has provided a grant to install both defibs.

Cllr Mercer, on behalf of The Parish Council, has been actively liaising with DCC Highways regarding the design and installation of new gateway signage for Winkleigh and Hollocombe; a final design should be approved at our meeting in September with the signage being installed before the end of the financial year.

The Parish Council has formed a working group to look at what events could be held in June 2022 to celebrate HM Jubilee. If you would like to be involved or have any suggestions for activities, please contact me.

The Parish Council is still liaising with DCC Highways with regards to managing the verges around the Village within the 30 mph area for wildflowers. We have completed the risk assessments and following their approval we will carry out verge surveys in accordance with the ecologists' advice before we are given permission to sow any seed on them. If all goes to plan, we hope to be sowing seeds this autumn.

Finally, I attend the weekly market in the Community Centre and the Monthly Market in the Village Hall in order to have a community presence, listen to the views of our parishioners and bring matters to the full Council for their consideration if residents request it. During these occasions many people engage in conversation about issues which affect our parish; potholes, Covid, traffic, planning, ambulance callout times, climate change, problems on the airfield and the Neighbourhood Plan were all topics posed and discussed at the Saturday market, so why not join me sometime and tell me what you think; however, the Parish Council can only act on matters they have the lawful authority to, but residents can be directed to the appropriate body if necessary.

Angela Findlay
Chair of Winkleigh Parish Council

Jenny Rock

Rock Solid Book-keeping Solutions
Creating order from Chaos!

Collacott Lodge,
Winkleigh,
Devon EX19 8LE

Mobile: 07743 683 756

Email: rocksolidbookkeeping18@gmail.com

Book-keeping, Bank reconciliations, Creditor & Debtor Reports.
VAT Returns, Accounts to Trial Balance, Liaise with Accountants.
Temporary, 'One-Off' and Permanent Contracts undertaken.
Friendly, helpful advice for small businesses.

CIMA Advanced Diploma in Management Accounting.
Association of Accounting Technicians NVQ IV.

HALLELUJAH!!! – Okehampton Sings Again!

Open Evening with Okehampton Choral Society

On Monday, September 13th 2021 at 7.15 pm in Fairplace United Church, Okehampton [Pandemic regulations permitting].

Do come and join us and celebrate the new freedom to sing! This taster session is open to all at no charge and we will perform some popular pieces and extracts from Handel's 'Messiah'. Just come and make some music with us – it's been a long year! If possible please bring a copy of Messiah with you.

On the 20th September normal practice sessions will resume, so if you enjoy a good sing and like making music with friendly enthusiastic people, do come and give us a try. We sing and rehearse on Monday evenings at Fairplace Church Okehampton from 7:15 to 9 pm.

We perform a wide variety of choral works in our local community and would welcome any voice, young or old. There are no auditions so why not come along and decide if you would like to join us. For more information please contact Jenny on 01837 840282 or enquiries@okechoralsociety.org.uk

For more information please contact Jenny on 01837 840282 or email enquiries@okechoralsociety.org.uk



DOWN FARM

Growing food, feeding the community

Organic produce from our farm and local suppliers.
Online farm shop OPEN weekly
Friday - Tuesday for orders on Thursdays.
Order online or phone
.....
- VEG - VEG BOXES - SALAD - HERBS - FRUIT - MILK -
- BREAD - BUTTER - EGGS - DRY GOODS -
.....
Contact farmers Olivia & Henry
07739892488 | www.down-farm.com
hello@down-farm.com



Winkleigh Short Mat Bowling Club

We're back and nearly back to normal!

Our roll-up sessions are now back to the original days and times.

Mondays and Fridays 2.00 – 4.15 pm. The Club holds a "Safe to Bowl" certificate issued by England Short Mat Bowling Association and we follow all the necessary protocols set by them and the Sports Centre to ensure everybody's safety.

We hope to get back to competitive bowling in the late autumn but it's just really good to be on the mats again. Our thanks to the Trustees of the Sports Centre for their support throughout.

If you are fed up with staying home and would like a gentle, friendly and sociable couple of hours why not come and join us Mondays or Fridays. You will find a warm welcome and lots of encouragement.

If you want to know more please contact me on oldsmithy1@btinternet.com or 01837 83853.

Look forward to seeing you soon

Jan Ovenden

Adam of Eden Tree Care



A friendly, family run company aiming to provide a range of high quality arboricultural services to our customers trees.

Services include:

- Tree Removals / Dismantles
- Tree pruning, reductions, thinning, shaping and dead wood removal
- Hedge trimming
- Stump grinding
- Tree planting


All work is insured to £5million, complies with relevant British standards and is carried out by appropriately trained and equipped professional arborists

CALL NOW for friendly, professional advice and to arrange a **Free no obligation quote**

TEL: 07398268877

Email: adamofedentrees@gmail.com

Check us out on facebook and instagram: [@adamofedentrees](https://www.facebook.com/adamofedentrees)



1st Dolton and Winkleigh Scout Group

As you will be aware there have been no Beavers, Cubs or Scouts running during the last year due to the government guidelines in place which have restricted gatherings of more than six people.

During this time all our leaders have decided to step down after many years of devoted service. I'm sure you will join me in thanking Nicky McCulloch (Cubs), Karen Herniman and Adrienne Barwell (Scouts), Carol Chambers (Group Scout Leader) and her daughter Ashleigh (Assistant Leader) for all that they have done over many years to provide an excellent Scout Group for our community.

On Monday 14 June 2021, the executive committee, along with Trevor Waycott the District Commissioner, took the difficult decision to suspend the 1st Dolton and Winkleigh Scout Group for the next 12 months. We sincerely hope new leaders can be found during that time and that the group can then move forward with fresh energy and vision. Once new leaders are in place, we can restart at any time in the next 12 months.

If you, or anyone you know, have a heart and vision for young people, then please get in touch as we would love to hear from you. Full training and support is available.

Nicola Knight, Former Chair, 1st Dolton and Winkleigh Scout Group



SAM'S CIDER
THE PROPER DEVON CIDER

Celebrating
100 years
of cider being
made on site

Makers of award-winning proper Devon cider

www.winkleighcider.co.uk info@winkleighcider.co.uk Follow us on Facebook & Twitter

You can visit us at Winkleigh Cider Company, Western Barn, Hatherleigh Road, Winkleigh, Devon, EX19 5AP
Onsite gift shop and local produce

Enjoy a Cream Tea in aid of Local Children's Hospice

The Big South West Cream Tea takes place over the August Bank Holiday weekend and the organiser Children's Hospice South West (CHSW) is asking supporters to join in by holding their own cream tea fundraiser with friends and family.

"If you'd prefer to hold your cream tea before or after the August Bank Holiday that's absolutely fine; however and whenever you plan to take part in the Big South West Cream Tea, every penny you're able to raise will make a real difference to children with life-limiting conditions and their families."

To register your cream tea event or for more information, visit

www.chsw.org.uk/creamtea

Are you jam or cream first?

Sponsored by 30 Years

Raising money for local families one scone at a time

Celebrate 30 years of caring for local families by hosting a cream tea, and help to raise vital funds for the future.

Register for your free fundraising pack
www.chsw.org.uk/creamtea

THE BIG SOUTH WEST
cream tea
children's hospice SOUTH WEST
Celebrating 30 years

Making the most of short and precious lives across the South West
Supported locally by the 1000000

COVERING ALL EXCAVATIONS AND GROUNDWORKS BOTH LARGE AND SMALL PROJECTS AT COMPETITIVE PRICES



**FULLY INSURED
HEDGE-TRIMMING FLAIL &
CIRCULAR SAW
FIREWOOD PROCESSING.**

**CALL MARTIN ON 07817 46420
WWW.MPCONTRACTORS.CO.UK
FACEBOOK: MARTIN PARISH
CONTRACTING**

Smitten with a Kitten

On Bank Holiday Monday 31st May, local Winkleigh Artist and cat lover Sonya Bull was already poised to offer a home to a one-eyed cat from Blue Cross when she suddenly spied a plea for help from a local farmer who had found a tiny kitten abandoned in his barn. After confirming with Blue Cross that the one-eyed cat was safe and would be secured in another home, Sonya knew what she needed to do. Her situation is ideal because she works from home and has the space, resources, dedication and also the time to nurse and nurture a tiny kitten on the brink of death. Sonya and her husband Allan drove immediately to collect the kitten in its hay-box and despite it being Bank Holiday, were able to secure the cat milk and bottles from



North Park Vets on the way home, where one of the vets checked over the tiny 180g animal. Harry's blue eyes were just trying to open. The ears were still down, no teeth had come through yet. This was clearly a very young kitten, maybe 3-4 weeks old, and Sonya received full instructions on how she would need to keep it warm and secure, hand feed every 3-4 hours (she set her alarm through the night),

toilet after feeding, weigh daily. For the first few days, Harry's life was in the balance.

After 5 days Sonya was concerned because although Harry was gaining weight and becoming more responsive to his world, he still hadn't pooped, and she was made aware of a condition where the bowel and anus may not have developed and connected properly. If unable to poo, the kitten would have to be put to sleep. Her vet Ben, gave the little baby kitten a thorough examination and was able, very, very carefully, to take the little cat's temperature, and confirm that the bowel and anus were all intact and as they should be. Sonya was advised to carry on exactly as she had been and commended for her care. The very next day there was a major celebration in the Bull Household and on social media. Harry had his first tiny poo!

There were one or two minor setbacks Sonya had to deal with, an eye infection and a bit of inflammation which developed in June for which Harry needed medication in tiny measured quantities.

Sonya's notes from 24 June: - Went to North Park Vets, North Tawton. Vet suspected inflammation as no signs of water infection. Said to give it a week and if not cleared up by itself to come back. 500g in weight- ~~cat~~ vet confirmed Harry actually is a girl. So now: Harri ♥!



After a 5 day course of Loxicom for inflammation and her first mashed up bowl of kitten food and milk, Harri went from strength to strength in July. Sonya increased the gap between night feeds to 5 hours. Now Allan feeds her at 1 / 1:30 am. Next

feed is at 7:30 am. Now no problems with inflammation. Harri loves snuggles with her Mum and Dad. She's very inquisitive and has a great character. She loves to play with her feather toys and teddy Kong and LOVES cooked chicken breast. As of 10th August Harri weighs 1328g!

Fun Facts about Ginger Cats.

Only about 1 in 5 orange (ginger) tabby cats are female. Scientists and researchers are fairly certain that orange tabbies' colour arises from a sex-linked gene, with the X-chromosome responsible for the orange colouring.

A lot of Ginger tabby cats are famous. Apart from Garfield, there's Crookshanks (from *Harry Potter*), Milo (from *Milo and Otis*), Jones (from *Alien*), Orangey (from *Breakfast at Tiffany's*), Puss in Boots (from *Shrek 2*), Spot (from *Star Trek: The Next Generation*), and Orion (from *Men in Black*). There was Orlando the Marmalade cat in the 19 book series for children by Kathleen Hale printed between 1938 and 1972 and Winston Churchill favoured ginger cats having had at least 2: Tango and Jock.

There's a common legend that orange tabbies bear the "M" mark on their foreheads because one curled up with the baby Jesus, helped him fall asleep and was blessed by Mother Mary's touch for doing so.

If anyone else has a story to share of success against the odds with an animal, I'm sure readers of Distinctly Winkleigh would love to hear about it. Thank you to Sonya Bull for her input, diary and pictures of Harri, I'm sure we wish Sonya and Harri all the best for the future.

Sonya Bull & Rachel Goldsworthy

Bedroom to Business Programme Sept - Nov 2021

The Business & IP Centre Devon (BIPC) is excited to announce the Bedroom to Business programme.

Do you want to make your business idea a reality? Not sure where to start? Our Bedroom to Business programme includes a Growth Accelerator course with sales trainer James White. In addition, our team of 30 experts will provide supplementary workshops covering topics including: mind-set, visioning, profit/loss forecasting and writing a business plan. All the webinars are delivered online and all are FREE to access!

The 13-week programme includes all the steps and tools you need to make your dream a reality.

For more details including the full programme see the BIPC Devon website: *Business & IP Centre Devon* (librariesunlimited.org.uk)

In other exciting news, we have partnered with NatWest to provide Start-Up grants and support for female founders. For more details on how to apply for a 'She Started It' grant check out: *Startup Grant for Female Founders - Business & IP Centre Devon* (librariesunlimited.org.uk)

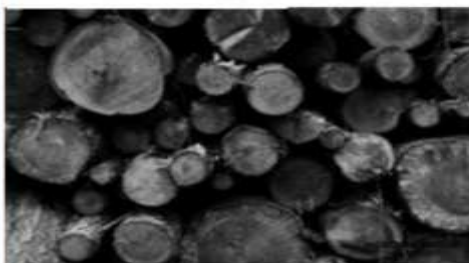
Start-up Grant for Female Founders - Business & IP Centre Devon



BIPC Devon will deliver flexible small-scale consultancy and business support packages to over 200 new start businesses across Devon, using a grant donated by NatWest.

bipc.librariesunlimited.org.uk

Local Logs



Dry seasoned hardwood
All stored under cover & delivered in
Chulmleigh & surrounding area.

Truck Load	£90
Double Load	£180
Trailer Load	£280
Net of Logs	£5
Net of Kindling	£5

Martin 07817 464420 parish@btinternet.com
www.mpocontracts.co.uk

ACE Archaeology Club

We are still cataloguing all our finds; loads of pottery and metal, or as I prefer to call it, rust. However, we now have a dig to look forward to. Although by the time you read this we will probably have finished!

We couldn't get back to our excavating last year because of Covid but we are going to have a go this year. We will be digging for a shorter time and with fewer people as we feel that we still want to abide by social distancing and need to keep tools etc sanitised which is going to be difficult. The diggers will also have to provide their own biscuits as we are not having the communal biscuit tin. The sacrifices we make! The Health and Safety Risk Assessment will have a few more paragraphs this year! Unfortunately, we are not having an Open Day this year, but we look forward to

things being better next summer. You will be able to watch our progress on our website or Facebook page.

Meanwhile we are still finding more little sherds of children's mugs with improving mottos on that I have mentioned before in these articles. We hope that once we can sort the pottery into types we will identify more and may even be able to construct a complete one. We can dream. The two pieces in the top photo on the left may come from the same pot as the design colour is very similar but the piece with "pra" on it is part of a very small base, about 4cm diameter, so not sure that the other piece would fit. These pieces are roughly Victorian in date.

The second photo shows a sherd we catalogued this week and that intrigued us. First tentative identification is that it is fairly local and possibly medieval in date, 13th – 14th century. So we are rather pleased with that.

Do have a look on our Facebook page, whenever you get to read this, as we would love to see you.

Erica Williamson -

ACE Archaeology Club.

Find us on Facebook or

www.acearchaeologyclub.wordpress.com





BUG HOTEL WORKSHOP

FAMILY FUN ON THE VILLAGE GREEN

- **BUILD A BUG HOTEL**
- **GAMES ON THE GREEN**
- **STORY TELLING**
- **WILDFLOWER SEED BOMBING**
- **PICNIC**
- **REPURPOSED ITEMS FOR YOUR GARDEN.**

2.30 - 5.30 PM // SATURDAY 18 SEPTEMBER 2021
SAMPFORD COURTENAY VILLAGE GREEN
WWW.SAMPFORDCOURTENAY-PC.GOV.UK



VISIT GREATBIGGREENWEEK.COM FOR MORE INFORMATION

Let's ALL Play !

Court sports for all ages and activity levels

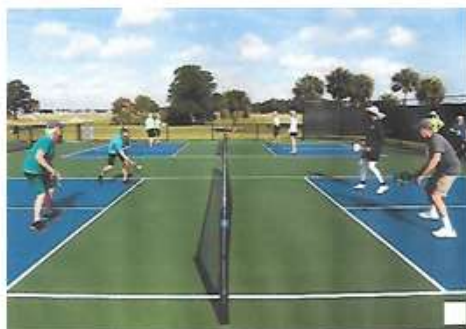
Through our fundraising efforts and your sponsorship, we can re-surface and re-purpose our existing courts which will enable us to offer sports including, Tennis, Pickle Ball and Net Ball. Adults, Seniors, Children and Youths will then be able to enjoy getting "back to play". Our aim is to offer classes, coaching and encouragement for all age groups and activity levels to make full use of this wonderful facility.

"See you on the Courts"

Youths Aged 11-16 are welcome to join us as part of the Winkleigh Youth Club for a fun introduction to Tennis -Wednesdays from 7-9pm
a donation to the refurbishment fund would be greatly appreciated
Please note: maximum of 8 children join now!

What the heck is Pickle Ball ?

Pickleball is a fast-growing sport and is becoming very popular in the UK especially with seniors. The game combines elements of tennis, table tennis and badminton. The rules are simple, and the game is easy for beginners of all ages to learn. This is a simple paddle game played with a baseball-sized wiffleball over a tennis-type net on a Badminton-sized court. Only the serving team can score points which are scored by legally serving a ball that is not returned, or by winning the rally. Very similar rules to Badminton, Tennis and Table tennis, Great Fun for All Ages!



To join or for more information
Please contact:

Jamaddocks13@hotmail.com

[Crowdfunder.co.uk- Winkleigh-tennis-club—lets-all-play](https://www.crowdfunder.co.uk/winkleigh-tennis-club-lets-all-play)

Devon Open Studios

North Tawton, Bondleigh and Bow Art Trail

11th – 26th September 2021

There are several local artists participating in Devon Open Studios this year, and they have clubbed together to create an art trail for the people of North Tawton, Bondleigh and Bow. The trail includes the studios of Janet Jarvis, Art Scribe, and Ruth Helen Smith in North Tawton, Celia Olsson in Bondleigh, and Rosie Brewer in Bow. A map will be emerging soon at ruthsmithgallery.co.uk so keep your eyes out!

Meet the artists:

Janet makes paintings of Devon's amazing farm animals, wildlife and pets. Come and see her exquisite selection of paintings, prints and cards. (Open 10-5, Mon, Tues, Weds, Thurs, Fri, Sat, & Sun) - janetjarvis.com

Art Scribe are Reg and Emma who make artist quality watercolour paints. Come and watch them demonstrate the traditional process of hand mulling pigments and give them a try! There'll also be some sweet deals on their paints which can't be missed. (Open 10-5, Fri, Sat, Sun, Mon. Demonstrations 2-4 Sat & Sun) - artscribe.uk

Ruth has been awarded one of this year's Emerging Artist bursaries. She has been making oil paintings that celebrate local produce and how it can enrich community. Come and see her work in the gallery she has recently opened in The Square. (Open 10-5, Mon, Tues, Thurs, Fri, Sat, and 1-5 Sun). ruthhelensmith.co.uk

Celia makes loose, colourful watercolour and mixed media paintings, many inspired by local views seen during lockdown and by memories of her travels. (Open 11-6, Mon, Tues, Weds, Fri, Sat). celiaolssonartist.co.uk

Rosie works in both wood and ceramics, creating a beautiful range of kitchenware as well as one-off artworks. Drop in for pinch-pot making sessions, and have your creation fired and glazed for just £5! (Open 10-5, 17th, 18th, 19th, 20th, 24th, 25th, 26th Sept.). rosiebrewer.com

devonartistnetwork.co.uk / devonopenstudios.co.uk / ruthsmithgallery.co.uk

Storage containers to rent near Winkleigh

20 foot x 8 foot x 8 foot high

Long or short term rentals, from £20 per week

For more details please call Julian on 07947 877284

or e-mail julian.tolley@btinternet.com

W H T Letting

BESPOAK

FURNITURE & JOINERY

From the heart of Devon to the heart of your home...

update your bedroom furniture,
transform your storage,
restore your doors, windows or gates



Custom-built, affordable solutions for inside and out, using a range of materials, including sustainable and locally sourced timber.

We are so confident in our traditional craftsmanship, blended with modern techniques, that all our work carries a 10-year guarantee.

Contact us for a **FREE**, no obligation quotation

✉ enquiries@bespoakjoinery.com

☎ 01837 680 030

bespoakjoinery.com

Bespoak Furniture & Joinery Ltd. The Workshop,
Middle Reeve, Brushford, Wembworthy, Chulmleigh EX18 7SJ



Word Search

L	N	N	P	K	S	M	O	O	R	H	S	U	M	E
J	H	I	H	C	U	C	U	M	B	E	R	F	C	W
F	T	O	M	A	T	O	T	F	U	Q	P	C	Q	F
G	C	V	I	M	J	K	R	C	F	R	R	H	A	K
B	O	N	B	A	G	L	E	T	T	U	C	E	I	W
B	L	J	E	N	T	R	I	X	M	C	P	N	N	B
J	E	S	A	G	O	U	S	Z	N	H	G	G	R	G
A	S	W	N	E	O	U	R	E	D	I	Q	S	O	V
W	L	E	S	T	R	V	R	S	O	V	H	R	H	T
B	A	E	G	O	T	O	X	Y	W	E	T	E	S	W
E	W	T	B	U	E	V	C	R	E	S	S	P	I	X
Y	H	C	M	T	E	D	U	W	Z	H	C	P	D	J
E	O	O	S	I	B	Q	T	R	V	J	V	E	A	N
Z	Y	R	H	S	E	V	I	D	N	E	S	P	R	I
T	K	N	H	S	P	R	I	N	G	O	N	I	O	N

BEANS

BEETROOT

CHIVES

COLESLAW

CRESS

CUCUMBER

ENDIVES

LETTUCE

MANGETOUT

MUSHROOMS

PEPPERS

RADISH

SPRING ONION

SWEET CORN

TOMATO

Solution on Page 56



**Ladies & gents
Hair and Beauty salon**

For all your hair and beauty requirements

A friendly and local salon

*Telephone 01837 83004
Exeter Road, Winkleigh*

Established
over 30 years

Sudoku Puzzle

		6	5					
				3	1	2	4	
7						9		
		3	4					9
	7						8	
1					6	4		
		4						7
	2	7	1	9				
					5	3		

("Sudoku puzzles are provided by www.sudokuoftheday.com")

Solution on 56

Sueno Beauty

Changes, Exeter Rd, Winkleigh EX19 8HW
OPEN: Mondays 10am – 9pm Tuesday 10pm – 7pm
 Wednesday & Thursday Evenings 6:30pm – 9pm
Massage and Holistic Therapies

- | | |
|---|--|
| <ul style="list-style-type: none"> • <i>Swedish Massage</i> • <i>Deep Tissue Massage</i> • <i>Aromatherapy Massage</i> • <i>Pregnancy Massage</i> | <ul style="list-style-type: none"> • <i>Hot Stone Massage</i> • <i>Bamboo Massage</i> • <i>Ear Candling</i> • <i>Reflexology</i> • <i>Thai Foot Massage</i> |
|---|--|

Contact: 07590233607 **Email:** suenobeauty@outlook.com

Puzzle Solutions

L	N	N	P	K	S	M	O	O	R	H	S	U	M	E
J	H	I	H	C	U	C	U	M	B	E	R	F	C	W
F	T	O	M	A	T	O	T	F	U	Q	P	C	Q	F
G	C	V	I	M	J	K	R	C	F	R	R	H	A	K
B	O	N	B	A	G	L	E	T	T	U	C	E	I	W
B	L	J	E	N	T	R	I	X	M	C	P	N	N	B
J	E	S	A	G	O	U	S	Z	N	H	G	G	R	G
A	S	W	N	E	O	U	R	E	D	I	Q	S	O	V
W	L	E	S	T	R	V	R	S	O	V	H	R	H	T
B	A	E	G	O	T	O	X	Y	W	E	T	E	S	W
E	W	T	B	U	E	V	C	R	E	S	S	P	I	X
Y	H	C	M	T	E	D	U	W	Z	H	C	P	D	J
E	O	O	S	I	B	Q	T	R	V	J	V	E	A	N
Z	Y	R	H	S	E	V	I	D	N	E	S	P	R	I
T	K	N	H	S	P	R	I	N	G	O	N	I	O	N

2	4	6	5	8	9	7	3	1
5	8	9	7	3	1	2	4	6
7	3	1	6	4	2	9	5	8
8	6	3	4	2	7	5	1	9
4	7	5	9	1	3	6	8	2
1	9	2	8	5	6	4	7	3
9	5	4	3	6	8	1	2	7
3	2	7	1	9	4	8	6	5
6	1	8	2	7	5	3	9	4



ALL SHINES WINDOW & EXTERIOR CLEANING

- WINDOWS
- GUTTERS, SOFFITS, FASCIAS
- SOLAR PANELS
- HOUSE WASH (SOFT METHOD)
- CONSERVATORIES
- ROOF DE-MOSS
- PATIOS, BRICK, PAVING, DRIVE-WAY



Tel: 01805 938502 - Mob: 07711079577

YOUR COMPLETE ELECTRICAL SERVICE



We have more than 28 years of experience in electrical contracting throughout Devon.

- » Rewiring
- » New consumer units
- » Minor works
- » New installations
- » Energy saving and LED
- » Fault finding
- » Emergency call outs



We'll take care of it.

**Call us now for a
free estimate and advice.**

Winkleigh - 01837 83900

Bedwell Electrical
The Airfield, Winkleigh
Devon, EX19 8DW

info@bedwellelectrical.co.uk
www.bedwellelectrical.co.uk



And Finally

In this edition, we have made some layout changes to take advantage of the colour covers, as well as re-introducing the previous seasonal colours on the outer covers, with publication information returning to the outside back cover. The Events Diary will be now usually be found in the centre pages for easy reference, with updates published at <https://winkleighonline.com>. The centre pages also include a summary of events for Winkleigh Fair, which has had to be delayed to September this year.

The front cover picture is of the wildflower verge outside Alan Jacobs' house, taken by Stone Naylor. On the inside front cover are the entries from the Winkleigh Fair Scarecrow and Children's Pet Portrait Competitions. Well done to all of them!

This edition of Distinctly Winkleigh is a bit thinner than has been usual recently, because it is the holiday season and there are fewer events to publicise and report on. Don't forget that the mix of articles we publish solely depends on the content that we receive. Therefore, if you think there are other topics we ought to be covering, please don't be shy and let us know, or get typing!

The deadline for contributions to the winter edition will be NOON on Thursday 11th November 2021 for planned publication / delivery at the end of November. Please don't wait until the last minute – you can send in articles at any time!



Let us help you take the stress out of family or friends coming to visit.
Clotworthy, a period Georgian house close to the village centre,
offers 4* Gold Award accommodation.

All rooms are large and with good views, and all have en suite
facilities with free standing baths or showers.

Give us a ring for availability or send us an e-mail.

Clotworthy House Bed & Breakfast

Torrington Road, Winkleigh, Devon EX19 8HR

Telephone Susan or John Short: 01837 83709

Email: enquiries@clotworthyhouse.co.uk

Web: www.clotworthyhouse.co.uk

Winkleigh Drivers compete in local Auto-Cross Competition

In July, Adam Wonnacott and Mid Devon Motors' Kevin both represented Winkleigh in a local Auto-Cross Competition.



Kevin in his Mini



Adam in his Peugeot

DISTINCTLY WINKLEIGH - PUBLICATION INFORMATION

The Winkleigh Society publishes Distinctly Winkleigh quarterly at the end of February, May, August and November. Copies are delivered free of charge to all households and businesses in the Parish.

All articles submitted for publication may be subject to editing, primarily for space or layout reasons. **Please email your articles to**

articles@distinctlywinkleigh.co.uk, or contact the Editor for delivery.

Advertisements from businesses in the local area should be emailed to

adverts@distinctlywinkleigh.co.uk, or contact the Editor for delivery.

Advertising posters for community, not-for-profit events, is free of charge.

Please ensure that all photos are of the highest possible resolution.

The deadline for articles and adverts is NOON on the second THURSDAY of each publication month (February, May, August and November).

Please note that the views expressed in submitted material are not necessarily shared or endorsed by the newsletter team or The Winkleigh Society.

Furthermore the Society does not recommend, or accept any responsibility for, any information, goods or services advertised in adverts or articles.

ADVERTISING RATES PER SINGLE EDITION:

Quarter-page: £12.50, Half-page: £25, Full page: £50

EDITOR: Godfrey Rhodes, Winkleigh EX19 8JP - Tel: 01837 682982

PRINTERS: HEDGEROW PRINT, CREDITON, EX17 1ES - Tel: 01363 777595

WINKLEIGH SOCIETY COMMITTEE MEMBERS

<i>Chair</i>	Penny Griffiths	01837 83407
<i>Vice Chair</i>	Margaret Miller	01837 83398
<i>Hon. Treasurer</i>	Alan Mulcahy	01837 680145
<i>Hon. Secretary</i>	Philip Griffiths	01837 83407
<i>Committee Members:</i>	Alan Jacobs	Barbara Jenkins
	Royston Naylor	Godfrey Rhodes
	Rachel Goldsworthy	Adam Wonnacott

All residents of Winkleigh Parish are members of The Winkleigh Society and may attend and vote Society Meetings. Further information about the Society can be accessed online at: <https://winkleighonline.com>



Find us on
Facebook

<https://facebook.com/TWSDW/>