

DISTINCTLY WINKLEIGH



Working for Winkleigh



Edition 81

Spring 2022

Cover sponsored by

George Shacklock, MTF Contracting, Winkleigh. 01837 83325

The Winkleigh Society Quarterly Journal

Record of Work – Townsend Hill Development



Images courtesy of 'Stone' Naylor

Winkleigh Society - Chair's Report - Feb 2022



NEXT EVENT: PLATINUM JUBILEE CELEBRATIONS: SCARECROW TRAIL.

As our contribution to the village Jubilee celebrations The Winkleigh Society will be promoting and funding this event. Watch out for more details. The **Theme will be a Fashion parade 1952-2022**. Pick your decade and style and glam up your scarecrow! Or collect a Trail Map, walk the trail and vote for your favourites. Money prizes will be awarded at the village Jubilee tea.

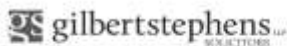
OTHER NEWS: Our 'Opening Up the Archive' day last December was timed to coincide with The Village Hall Saturday market and was well attended.

Sorting and cataloguing of the Archive stored in the Community Centre is a work in progress, but the display of maps, official records, documents and artefacts gave visitors plenty to browse through. Guest archivists also set up their stalls and displayed their personal collections: **Wendy Oxborough** [Hollocombe], **Joyce Brock** [Winkleigh Fair], **Shirley and Steven Leahy** [Airfield], **Andrew Ware** [photographs], **Sharon Jeens** [Hedges survey].

Just to keep us on our toes **Benjamin Roth** read out in Olde English the extract about Winkleigh from our copy of the Domesday Book. Thanks to **Barbara Jenkins and Rachel Goldsworthy** for coordinating it all.

WINKLEIGH SOCIETY AGM: Friday 11th MARCH 7 pm in the Community Centre. Special guests: DW posties & proof readers - all vital cogs in our production wheel. Complimentary bread, cheese, pickles and mulled cider - ALL WELCOME. Guest Speaker: Colin Smallacombe from Farming Community Network

Penny Griffiths - Chair: The Winkleigh Society



**When you need
advice we have
the solution**

Call our Crediton office
01363 77 55 66

Manor Office, North Street, Crediton EX17 2BR

Other offices at Exeter, Okehampton,
Budleigh Salterton, Ottery St Mary and Sidmouth.

Visit **gilbertstephens.co.uk** for more information

Gilbert Stephens LLP is authorised and regulated by the Solicitors Regulation Authority (no: 536070)

Heating, Cooking & Living.

- Stoves & Fires • Flues, Chimneys & Stove Installations
- Seasoned Logs • Range Cookers • Spares & Accessories



To see one of the largest selections of stove, fires and range cookers in the South West, many of which are live and on display, visit Rangemoors. Whether you want to add warmth and atmosphere to your living space or cook up a storm in the kitchen, we have the perfect appliance for you and your home.

Telephone 01837 680068
www.rangemoors.co.uk



Coming out of Covid - Community First Responder

I'm sure that we are all hoping for an easier year in 2022, seeing us out and about a bit more, spending time with loved ones and friends.

Unfortunately sometimes we get unwell; if seriously this may mean calling on the emergency services for help: in particular South West Ambulance Service. As well as the wonderful teams of Paramedics and Emergency Care Assistants there are a number of Community First Responders (CFRs). This voluntary role provides an essential rapid response for the patient whilst supporting the ambulance service.

Winkleigh's current CFR has been serving our village and surrounding areas for four and a half years. During the worst of Covid the service had to be stood down due serious health risks. It is now a pleasure to be able to tell you that our responder has been re-activated.

If you call 999 the person answering will establish the urgency of the situation then dispatch an ambulance crew to you if appropriate. A Community First Responder may also be sent by the dispatch team to give emergency care and support until the crew arrive. It's good to know we again have this care in our community.

Name supplied to DW



Jackson
Plumbing & Heating
Oil Fired Boilers & Ranges
Serviced, Maintained
& Repaired.

 **City & Guilds**

Fully Insured • All Work Guaranteed
Simon Jackson
01769 520846
07969 906220
jackson.plumbing@yahoo.co.uk

Introducing Winkleigh Pet Care



I would like to take this opportunity to introduce myself and my new business, Winkleigh Pet Care. I live in Winkleigh with my husband and our beautiful chocolate Labrador.

Animals have always been my passion in life, and after having worked within the veterinary profession for over 12 years I'm excited to now be starting my own pet care business here in Winkleigh.

I have over 15 years' experience of pet sitting, dog walking and caring for all of my clients' pets as if they were my own. I am very experienced in caring for all animals from small to large, hamsters to horses!

I am also fully insured and DBS checked and my services currently include dog

walking, home visits for garden breaks, companionship, feeding or medicating pets, house sitting, and freelance yard/groom work. I have plenty of references available on request.

I look forward to meeting more of your four legged family members soon!

If you would like more information on my services you can contact me through Facebook - @Winkleighpetcare, email me on winkleighpetcare@hotmail.com or phone – 07595249418.



Dog walking
Home visits
House sitting
Groom/Yard work
Fully insured and DBS checked

Laura Sherring-Lucas

winkleighpetcare@hotmail.com - 07595249418 - @winkleighpetcare

Winkleigh Parish Council – Letter to the Parish

I am writing to you as your newly appointed Locum Clerk to the Parish Council, I hope this finds you well and in good spirits. I am sure some of you will have followed closely the events that have led me to being selected for the role, and I am very glad to be addressing you for the first time. I am a resident of the village, who is keen to work at restoring the trust between you the parishioner, the Council as a whole, and the office I now hold.

I am available via the Parish Website - www.winkleighpc.org.uk, which I encourage you to make good use of as you track the Council's progress over the next few months. My overall aim in this position is to improve communication between the parish and its Councillors, as I am keen to avoid miscommunication wherever it might crop up. It will be my pleasure to serve the community, by facilitating the proper running of the Council; by executing my function to the best of my ability, and supporting others in doing the same in accordance with their elected duty.

For now, I further encourage you to contact me should you have any queries about the role of a Clerk, or anything else you think I might be able to help you with.

Benjamin M. Roth (Locum Clerk)



**Local Family Run Residential
Sales & Lettings Agent**

**Call us for a FREE
no-obligation Valuation of your Property.**

01837 83393

info@howesestates.co.uk www.howesestates.co.uk

Sell your property from 0% and no upfront fees*

*terms and conditions apply

Café update - exciting news at Sam's Cider



We are thrilled to say that we have started the process of knocking down the old buildings to make way for our brand-new, purpose-built café.

There will be something for everyone, a small soft play area for the children so the mums/dads/caregivers can relax while their little ones play. A quiet area for you to unwind and upstairs will be a lounge coffee bar overlooking the cider works.

We want to bring the Sam's Cider experience to you and will have an area where you can view our 100-year-old oak cider vats from the café, so you see the workings of Sam's Cider.

We are hoping to be open for the end of summer. Keep a check on our social media pages for updates on the build. We look forward to welcoming you very soon.

Kylie Beardon

SAM'S CIDER
TIS PROPER DEVON CIDER.

Celebrating
100 years
of cider being
made on site

Makers of award-winning proper Devon cider

www.winkleighcider.co.uk info@winkleighcider.co.uk Follow us on Facebook & Twitter

You can visit us at Winkleigh Cider Company, Western Barn, Hatherleigh Road, Winkleigh, Devon. EX19 8AP

Onsite gift shop and local produce

Winkleigh Parish Church News



Some of the oldest Christian communities in the world can be found in the forests of Northern Ethiopia. The Bible tells of the encounter of an Ethiopian man with Phillip, one of Jesus' disciples, who on hearing all about Jesus promptly asks to be baptised.

As far back as the 4th Century these communities built their brightly coloured churches in the forest, using the materials of the forest. Sadly, over the last 100 years much of Ethiopia's forest has been lost due to intensive farming and climate change; in fact only 3% remains. Most of that 3% surrounds one of these ancient churches and contains a huge array of plant and animal life. In a bid to protect the forest for future generations and to help the process of regeneration, some churches have built a low wall around their patch of forest. These walls are not to keep people out as the churches are still used, and people treat the forest with great respect, but to keep the forest safe and prevent the effects of land degradation from spreading.

It has now been over two years since our lives were changed in ways we could never have imagined, we were forced to retreat inside the walls of our homes to keep ourselves and those we love safe. We've had to put up low walls to stop the virus getting too close: face masks, hand hygiene, social distancing and shielding. Then when we thought it was all right to emerge, everything went backwards again. For many of us, just like those Ethiopian forests, it has felt as if our world has shrunk, in ways we could never have imagined.

Yet there is hope. Some of those Ethiopian churches have had to rebuild their forest walls. Not because the walls have collapsed but because the forest has started to regenerate right up to the wall. They have had to move the protective walls outwards as the forest recovers, grows and comes to life. The hope is that one day, more areas of dusty barren wasteland will be covered in forests, teeming with life

For us, now the time has come to enable us to move our protective walls outwards. To allow everything which has been laid dormant to be revitalised and to bring those things which are life-giving back to our church and community. In some cases new ideas will spring up and old initiatives will be laid aside.

It seems appropriate that this time of hope and looking to the future coincides with Easter. As we celebrate the rising of Jesus from the tomb on Easter day and rejoice in the power of hope and life over darkness and death, we know that the future lies ahead of us. Like those flourishing church forests in Ethiopia so too can we flourish and grow once again, as individuals and as a community.

*Revd Helen Blaine (01837 83710 - revhelenblaine@outlook.com)
Priest-in-charge: Winkleigh, Ashreigney, Broadwoodkelly and Brushford.*

Parish Church Fundraising

We are currently taking part in the 'Recycling for Good Causes scheme' to raise funds for All Saints' Church. The scheme collects unwanted Jewellery, Coins and Currency, Mobile Phones, Cameras, Gadgets and Stamps. These then get recycled and we hope we will raise some much-needed funds. There is a collecting box at the back of the church for your unwanted items, as well as a list of what we are collecting and what we are not. Please only leave the items listed.

Spring Clean

Do you have an hour or two spare to help us give the church building a good spring clean? It is a great opportunity to explore the bits of the church you don't normally see and we will also provide tea and cake to fuel the cleaning. Join us on Saturday 9th April 10:00 am -12 noon.

Lent and Easter Special Services

2nd March - 11:00 am & 7:00 pm Ash Wednesday Eucharist

27th March - 9:30 am Mothering Sunday Eucharist

14th April - 7:00 pm Maundy Thursday Eucharist

15th April - 10:00 am Liturgy of Good Friday

16th April - 8:30 pm Easter Vigil Service

17th April - 9:30 am Easter Day Eucharist

Jenny Rock

Rock Solid Book-keeping Solutions

Creating order from Chaos!

Goodleigh Cottage,

Torrington Road,

Winkleigh,

Devon EX19 8EY

Mobile: 07743 683 756

Email: rocksolidbookkeeping18@gmail.com

Book-keeping, Bank reconciliations, Creditor & Debtor Reports.

VAT Returns, Accounts to Trial Balance, Liaise with Accountants.

Temporary, 'One-Off' and Permanent Contracts undertaken.

Friendly, helpful advice for small businesses.

CIMA Advanced Diploma in Management Accounting.

Association of Accounting Technicians NVQ IV.

Action on Footpath Number 22 on Townsend Hill

Dismayed and concerned at the dangerous state of the entrance to the diverted footpath on Townsend Hill, we contacted our **local Footpath Officer John Baker of DCC** with photographs of the problem and a request to make a site visit.

John reacted quickly, made a visit, and stated what remedial action had to be taken so that the path is made accessible.

This involved requiring the contractors of the developers to put down scalpings dressed with 20 mm of dust at the gateway that had been churned up by construction traffic. The Chair of Winkleigh Parish Council has made site visits as several people raised their concerns at the public session of a Parish Council meeting.

On such a highly visible gateway to the village where the most popular footpath is accessed it has not been a great start. Grateful thanks to John Baker for his speedy, effective intervention.

Michael Newcombe of Devon Highways has also been contacted about the safety of pedestrians walking up and down the Hill to the footpath and Winkleigh Primary School. This is probably the more pressing issue now: **Pedestrian access to the school and footpath**. This road, already notorious as a rat-run, is now more perilous than ever with restricted road space [due to essential signage on the road]. **Pedestrians are a priority** in both the recently updated Highway Code and our Neighbourhood Plan.

Unfortunately for Winkleigh, the developers, who have had a bewildering recent change of names: **Larkfleet / Allison Homes/ Larkfleet SW** [recently acquired by, the global investment management firm **PIMCO**], do not belong to the **Considerate Constructors Scheme** which stipulates Community site notice boards/contact details and emergency numbers.

Phil & Penny Griffiths

	<h2>Electrical Contractors</h2>	
Qixx	<ul style="list-style-type: none">• Rewires, New Builds, Extensions• Consumer Unit Upgrades• Showers, Cookers, Heating• Internal / External Lighting• Sockets & Telephone points• CCTV & Networking• Testing & Inspection (inc PAT Testing)	
Winkleigh		
01837 83229		

Our Devon County Councillor Writes



It has been a busy start to 2022, both at County Hall and here in Winkleigh. January and February are the traditional months for budget setting and I will talk about that in a moment.

Locally I have again been dealing with mostly Highways-related issues having been out and about reporting numerous potholes and defects throughout the village and the parish, in particular on some of the more rural roads around the Airfield, Hollocombe and on the road towards Bridge Reeve. I am well aware a lot still needs doing but I cannot emphasise enough: keep reporting the potholes! The more potholes reported on a road, the more likely it is we can get something permanent done. It was only through continuous pothole reporting on Eggesford Road that I wrangled out of Highways the serviceability patching. So, get reporting! If nothing happens, let me know. You can report potholes online by typing in **devon.cc/report-it** on your internet browser, or if you are not online you can still ring in on **0345 155 1004**.



John Short

Professional Interior & Exterior
Painting and Decorating

Clotworthy House, Torrington Road,
Winkleigh, Devon, EX19 8HR

Telephone: 01837 83709

On another local matter, I am aware of the issues that have been caused on Townsend Hill by the construction of the new housing estate. I will continue to monitor the situation carefully, particularly regarding road safety and the access to and condition of the public footpath.

Although I appreciate it is a while off yet, traffic calming should be installed on Townsend Hill as a condition of this development, and I have been assured by the Highways Officers that the condition is that it will be installed *before* any of the new houses are occupied. Inevitably there will be disruption, but I would hope in the medium term this will improve the safety of the road and provide further discouragement for the route to be used as a 'rat run'.

Away from local matters, the start of the year has been a time at DCC of setting the Budget for the next financial year. Final proposals are due for approval at Full Council in February and while the overall picture is an increase in the Budget – with the revenue budget increasing from £580 million last year to £629 million this year – it has been one of the most financially challenging Budgets the Authority has had to set for many, many years.

We are projected to see an unprecedented demand on our Adult and Children's Services as we come out of the pandemic. 76% of DCC's revenue budget is now spent on these two services, yet according to our Chief Executive that funding ultimately goes to around just 3% of Devon's population.

Of course, we will continue to protect and look after those in need – the elderly, the young, and the vulnerable. Nevertheless, to set a balanced budget this year, DCC will be taking nearly £30 million out of its reserves. You can only use reserves once, and it is safe to say that repeating this exercise over the next four years would soon see our reserves depleted.

Funding for Adult Social Care and Children's Services are increasing by £29.6 million and £17.1 million respectively, and part of these increases will be used to improve funding to community and voluntary groups who can help support DCC and in turn allow the services to deliver more targeted and specialised support, something which again is needed as more and more people in our care are likely to have more complex needs than even a decade ago. We also need to pilot different ways of working so that we can deliver these services more effectively.

My mailbox is typically dominated by Highways issues, but it is because we have to provide these services for the old, the young and the vulnerable, that the funding for Highways is so tight.

Nonetheless, I remain an optimist and while this has been a tight budget to set, I am hopeful that future years will be easier. As you may have seen on the local news, the Government recently announced that Devon had been shortlisted alongside nine other County areas for a Devolution Deal. From the feedback we've had so far, Ministers and Civil Servants have been impressed with how in Devon we have adopted the 'Team Devon' approach. County, Unitaries, Districts, Town and Parishes have all worked together to get us through the pandemic. We want this approach to continue and while the details of a devolution deal will need to be negotiated with the Government, if we are successful, I would hope that it will entail additional funding and investment coming into Devon and Torrington Rural.

But until then if there are any DCC issues you'd like to contact me about you can contact me on Facebook on [facebook.com/clrsaywell](https://www.facebook.com/clrsaywell), ring 07886 446560 or email andrew.saywell@devon.gov.uk.

Winkleigh POST OFFICE

~ Not just a Post Office! ~

Full Banking Service

Deposit Cash & Cheques Business or Private

to Any Bank Or Building Society

Plus Withdrawals of Cash

Order & Collect Travel Money

(Euro & US Dollar always in stock

All Other Currencies – 24 hour notice)

Pay Car Tax + Payment of all Bills with a Barcode

Mobile, Gas & Electricity Card / Key Top-up

Wide range of Cards,

Full Range of Stationery & Seasonal Goods

Open 8.30 am – 5.00 pm Mon-Fri & 9 am – 12.30 Sat

Owner: Tony Bayley – 01837 83427

Questions from the Neighbourhood Plan Group to Torridge District Council

Below is a summary of the questions we sent in January to the Senior Planning Policy Officer, Dawn Burgess, at Torridge District Council, about Larkfleet seeking to **extend** their planning permission.

In pre-application talks we request:

1. **The Neighbourhood Plan** be referenced in its entirety; many policies in each section are relevant to all development proposals.
e.g. [ENV7] electric vehicle charging facilities.
2. **Sustainability lies at the heart of the NP [HCLW 3&4].** These refer specifically to how any development proposals west of the village should be dealt with so that the targeted nature of these policies don't get lost under the general sustainability umbrella. Sustainability of future proposals needs to be properly tested and the impacts understood and mitigated.
3. Developers are expected to demonstrate **positive environmental outcomes. [ENV 1].**
4. **Partnership working and delivery of the NP** Any development should have a clear community engagement strategy. [D 14].
5. **Discussion between parties should begin before any planning application is submitted.**

TDC Senior Planning Officer Dawn Burgess responded:

"With regard to the determination of planning applications, it is clear that 'made' [adopted] Neighbourhood Plans form part of the development plan for the subject area and will be given due regard in decision making. My colleagues in development management are aware of the status of The Winkleigh Neighbourhood Plan and how it should be taken into account in determination of planning applications".

Pauline Warner, Adrian Mercer, Angela Findlay, Penny Griffiths

Winkleigh Singers to Celebrate HM Queen's Platinum Jubilee with Spring Concert



The Winkleigh Singers
Registered Charity
Number
117121

Well-known choral group, the Winkleigh Singers will be performing a **Spring Concert on 23rd April at St Michael's Church, Great Torrington.**

The concert, which starts at 7.30pm, will include Parry's famous *I was glad* and will include *Vivats* to mark Queen Elizabeth's Platinum Jubilee, as well as Mozart's Trinitatis Mass.

Internationally renowned organist, Peter King, organist emeritus of Bath Abbey, will be performing with the choir.

Ticket will be available from early March from

www.winkleighsingers.org.uk

New members are always welcome; the choir held a very successful 'Come and Sing' event in January, which was very well attended and great fun. If you are interested in joining the choral group, please visit: www.winkleighsingers.org.uk/membership or call Roland Smith on 01363 884446.

Adam of Eden Tree Care



A friendly, family run company aiming to provide a range of high quality arboricultural services to our customers trees.

Services include:

Tree Removals / Dismantles
Tree pruning, reductions, thinning, shaping and dead wood removal
Hedge trimming
Stump grinding
Tree planting

All work is insured to £5million, complies with relevant British standards and is carried out by appropriately trained and equipped professional arborists

CALL NOW for friendly, professional advice and to arrange a **Free no obligation quote**

TEL: 07398268877

Email: adamofedentrees@gmail.com

Check us out on facebook and instagram: @adamofedentrees



Blessing of Memorial Stones

Below is the letter of regret that I wish to send to the next of kin and other loved ones of the deceased whose memorials were laid down in September. I think the letter speaks for itself.

"Dear

"I am the former Chairperson of Winkleigh Parish Council, and I am writing as an individual not as a current Councillor and former Chair, to apologize for the laying down of the memorial stones in Winkleigh Cemetery in September. I condemn this act as being disrespectful in both process and outcome and I very much regret the pain and distress this action has caused to the next of kin and others loved by the deceased.

"In recognition of this regret, I have asked the Reverend Helen Blaine, Vicar of All Saints' Church, to lead a Blessing of the Stones in order to begin a much-needed healing process. This will take place 2nd April 2022 at the cemetery at 10:30 am.

"The Blessing will be followed by a hot drink and refreshments in the Sports Centre if you wish. The Reverend Helen Blaine will lead the ceremony and she is happy to invite ministers from other denominations if requested. Please let me know if this is your wish. I would also appreciate it if you would let me know if you plan to attend.

"Finally, I am very aware that this hurt is not likely to be confined to only the next of kin. Please pass this letter on or invite other loved ones as you wish. Please let me know so I have an approximate idea of how many to cater for.

"I am sorry this ceremony will be held sometime after the event, but I wanted as many of the laid down stones to have been returned to their proper resting places as is possible, before beginning the healing process.

"Once again please accept my sincere apologies for the emotional harm and pain this action has caused.

Yours Sincerely,
Angela Findlay"

WPC are unable to release the names of the next of kin to me under Data Protection Regulations. I am therefore appealing to you, if you are next of kin or know someone who may wish to attend, please pass on my details, so I can send them an invitation. I believe that the planned blessing is important in order to help people who are angry and grieving to gain closure and put this event behind them, so it is important that as many who may wish to attend are aware that it is taking place.

Thank you for your help in this matter.

*Angela Findlay, Cobblestones, 6, Barnstaple St., Winkleigh, EX19 8HT
01837 682616 or angela.findlay@btinternet.com*



SCARECROWS FIT FOR A QUEEN'S JUBILEE

.....
THEME
★ ☆ FASHION PARADE ☆ ★
1952-2022



NEW LOOK, CITY GENT, TEDDY BOY,
BEATNICK, HIPPIE, PUNK ROCKER

ENTRY FORMS available from Winkleigh Post Office
and Hollocombe Hub from March 1.

Linda Passmore 15/01/1948 - 18/12/2021



Linda was born in Ilfracombe to Frederick & Violet Bewes. She had three brothers. The family moved to Morchard Road as Linda's father was a signalman for the railway. She attended Bow Primary School then Copplestone Primary School due to her father's job. She then attended North Tawton Secondary School until the new Shelly School opened in Crediton. After leaving school Linda worked at Thomas Moore in Exeter for many years.

She met Malcolm, they married and moved to Winkleigh where they started a family. They had two

daughters Tracey & Kim.

Linda worked at Hunt's Bakery (now the Bakery Stores) for many years and made lifelong friends. She also had other part time jobs to fit around looking after her family. She enjoyed village life bringing up her children and taking part in various events throughout the years. Winkleigh Fair was always a highlight of the year. Auntie Joyce (Brock) would dress us up every year for the fancy dress and on many occasions we would come away with the cup.

Linda lived in Winkleigh for 53 years. She had wonderful family with friends and neighbours around her. Due to ill health she sadly had to move away which was a very difficult decision for her. However she did look forward to receiving **Distinctly Winkleigh** to keep up to date with happenings in the village.

Linda had five Grandchildren, Ellie, Kristofer, Charlotte, Caitlin and Kaylee. She loved them dearly, was very proud of them all and would take great interest in everything they did in their lives.

She was the most loving and caring Mum and Nan and she will be sadly missed by us all.

Tracey and Kim

- Family History Research
- Birth Marriage & Death Certificates and also Wills can be supplied
- Missing Persons and Vehicle Registrations researched for Devon
- Free quotes

- Please contact:
- Tel: 07930430250
- Derick Skelly
- Flat 5, Moorland Heights,
- Exeter Road,
- Winkleigh EX19 8HW
- Est 1986

Email: derick.skelly@yahoo.co.uk

Contact: <https://derickskelly.wixsite.com/familyhistoryindevon>

Catkin Blooms has moved!

First of all a big thank you to Valerie Bissett for letting us rent and refurbish Bissett's Garage on Exeter Road as our new home.

The dark & cold days of January involved lots of noise and mess-making to create such a fabulous industrial-feel creative space. Thank you to everyone who has helped so much to get us up and running.

The big workshop space allows us to add a coffee shop to our new and existing range of locally-made gifts and cards, indoor and outdoor plants and beautiful Seasonal British Flowers. We will also be putting on seasonal workshops and 'meet the maker' sessions throughout the year around our big table.

We now have over 100 members in our Seasonal Friday Flower Club including weekly, fortnightly & monthly members. The spring season is busy for us with Mother's Day, Easter and Weddings all ahead and we welcome brighter and warmer days as working long hours in a garage workshop can be very chilly in winter!



Our coffee shop will be open for proper coffee roasted in Okehampton, lovely teas and local Apple Juice, along with fabulous bakes from Peck & Strong in Crediton.

Our opening hours are: Tuesdays to Fridays 10 am 'til 6 pm (coffee shop closes @5 pm) and Saturdays 10 am 'til 1 pm.

Please contact us at enquiries@catkinblooms.co.uk phone 07870 166985 or better still pop in and smell the coffee!

We look forward to seeing you.

Cath Kenny

European Landscape Award - 2021

One of the elements in the European Landscape Convention is the biennial European Landscape Award. The UK remains a signatory of the Convention as part of the Council of Europe. For this year I was invited to be a member of the jury, held, of course, on-line in April. We have made a selection for the Award, now confirmed by the Council and that is to give the award to the Astino valley project in Bergamo, Italy. There were 12 candidates which managed to get to the jury's table for a decision; all of them completed landscape projects.



Astino, Italy

There are four criteria by which we make a judgement: Sustainability, Exemplary value, Public participation and Awareness-raising. This year there was no UK entry, although we have won in the past with the landscaping of the Durham coastal coalfield. Summaries of the projects can be found by going to <https://www.coe.int/en/web/landscape/7th-award-candidates> and some of the videos are well worth watching; I like the difference between the bored teenagers in a Polish forest school with its armed wardens, and the excited children at the Slovak bee village.

Attitudes to landscape have moved on from the foundation of the Convention in 1992, and although our criteria remain valid, there are certainly shifts in emphasis, and I pick out a few from the bunch. The Burgas project (Bulgaria) combines the ornithological importance of salt pans with a suburban park under an airport; a

reminder that good landscape has many uses. In northern Finland they are re-educating farmers to use the coastal grazing marshes, as they once did, but funding still remains dependent on grants and tourism. Latvia's project was an educational one, inviting people to 'listen to' a local rock, a farmstead, a meadow and an oak. This reminds us that the quality of a landscape is as much in our heads as on the ground. Therefore, landscape and environment overlap but are **not** the same thing. In both Norway and Switzerland a village has carefully conserved its local heritage (including sheep) to improve people's lives, although very often these are communities of the wealthy. Sometimes we need to ask whether the local wealth is earned in the parish or if the place is simply a nice place to work at home or retire. In Silesia the open limestone landscape has been defended from forest invasion, and from climbers....with hunting being used as a management tool. The Portuguese candidate is a very remote huge estate on the Spanish border, brought back from degradation. Timișoara (Romania) has converted a former civic nursery into a small park which in the pandemic has been of enormous value for the poor of the local area. In Slovak Carpathia a couple of energetic beekeepers have turned over the whole local population of a valley into a bee landscape, and apiary projects and courses.



Beeland, Slovakia

At Brda, on the Slovene / Italy border a small town has restored all its walls and terraces to provide a spectacular rural tourism venue, and lastly the Turkish city of Antalya has stopped a huge dead cotton mill from becoming a shopping mall and instead made it into a Culture Nature Park.

Many exciting entrepreneurial ideas.

Catkin 🌿 Blooms -Creative Seasonal Floristry

Eco Conscious Flower/Gift/Plant/Coffee Shop

The Flowershop @ Bissetts Garage

Exeter Road Winkleigh EX19 8HW

☎ 07870166985 ✉ enquiries@catkinblooms.co.uk

Tuesday - Fridays 10 am 'til 6 pm - Saturdays 10 am 'til 1 pm

FLOWERS🌸PLANTS🌿GIFTS☕COFFEE🍵

👋Pop in for a nosey & say hello👋

However, what should villages like Winkleigh be doing? Why shouldn't we become the next British entry?

We were a united jury that the winner was the Astino valley at Bergamo in northern Italy. This is a valley just outside the city (a bit like the Valley Parks of Exeter) with an ancient ruined abbey, and the abbey lands now more or less derelict. They have restored the abbey and the lands are now smallholdings and allotments, opened an extension to the Bergamo Botanic Gardens, with footpaths and cycle ways (soft transport), much education activity including art, nature, and all the providers have to sign an ethics charter.....in general following organic principles. It is not 'neat and tidy', but it is literally buzzing.

There are lessons here for future landscape making. In some cases the emphases have shifted since the Convention was signed in 1990. The sustainability question now focuses even more strongly on carbon emissions, including energy sources and soft transport, so tourist developments score lower than facilities for local people. Especially after the Pandemic, safe access for all is central and a powerful emphasis on public health is expected. All landholders need to agree an ethical stance. Several projects were clearly primarily focussed on biodiversity, but this must include people, and especially those people with a long-term stake in the landscape.

The award will be given in February in Bergamo, and the jury is invited; so I have to investigate my conscience about travelling. I guess the answer is 'go by train.'

Peter Howard

W.D & S.J.CARNE

*Independent Family Owned
Funeral Directors*

**Established over 60 years
Personal Attention Day and Night**



Samantha Colgrave

**Summerhayes, Ingleigh Green,
Winkleigh, Devon, EX19 8AT**

Email: samjcarne@outlook.com

Tel: 01837 680199

**Pre-arranged and Bespoke Funeral Plans
Available**



TEN ACRES VINEYARD CAMPSITE

- ⑩ **Free local wine deliveries** to Winkleigh and surrounding area. Fri 4 – 7pm.
- ⑩ **Guided vineyard tours & wine-tasting** From 1st May - 30th September 4.30pm every Saturday. Private group tours also available (minimum 6 people). Booking essential for all tours.
- ⑩ **Campsite and Devon Wine Shack** open 1st May - 30th September. For tents/ small campervans. Glamping tents also available. Booking essential.

Order wine and book glamping/camping online on our website.
Email/phone for vineyard tour bookings or enquiries.

W : www.tenacresvineyardcamping.co.uk E : tenacrescamping@hotmail.co.uk
T : (01837) 83892

Open Book Construction & Developments Ltd

**General Building Works
Period & Listed Building Renovations
Maintenance & Repairs**

For a free, no obligation estimate, please call:

01837 83890 • 07541 002017

info@obcd.co.uk www.obcd.co.uk

Winkleigh Fair 2022

Fair week will commence officially with the traditional Opening Ceremony on Sunday 10th July and finish on 16th July.

There will be a series of community events during the week, including the Vintage Car Show on Wednesday 13th July.

Fair Saturday 16th July will include a Flower & Produce show, a Pram Race, a Family Disco and live music in the square.

More information will follow; other events are also planned but as yet still to be confirmed.

Posters, social media information and flyers will be distributed in all the usual outlets as soon as the programme is finalised.

We look forward to a fabulous week.

Sarah Goody - Chair Winkleigh Fair

TUE-FRI - 9AM - 5PM
SAT - 9AM - 4PM
SUN - 10AM - 3PM
CLOSED MON



**PET, HOME &
GARDEN SUPPLIES**

**THE OLD AIRFIELD
WINKLEIGH
EX19 8EZ**
NEXT TO JONESY'S CAFE

YOUR ONE-STOP ESSENTIAL SHOP!

NOW UNDER NEW MANAGEMENT!
Find us on Facebook
@pethomegarden

* WILD BIRD FOOD * PEANUTS * FAT BALLS * TREATS
* PET FOODS * LITTERS & BEDDING

* TOILETRIES * BIN LINERS * CLEANING PRODUCTS * STATIONERY
* COOKWARE * DIY PRODUCTS * PAINTS & BRUSHES * GREETINGS CARDS

* COMPOST * BARK CHIPS * FENCE & WOOD CARE * PLANTERS
* SEEDS * PLANT FOOD * TOP SOIL * PEST CONTROL * SMOKELESS FUEL

NOW STOCKING...
* HERBS * SPICES * DRIED FRUIT * PULSES * FLOUR * OATS
...AND SO MUCH MORE!!!

POP IN AND SEE US - WE'D LOVE TO SEE YOU!

TEL: 01837 680084



Southwest Fixings Ltd

Agricultural & Building Supplies Trade Counter

Tel: 01837 83492

Email: sales@southwestfixings.co.uk

- Fencing
- Timber
- Oils and Adblue
- Calor Gas
- Animal Health
- Batteries
- Pet food
- Nuts and Bolts
- Hydraulic Hoses
- Boots/workwear
- Tractor and Implement Parts
- Drainage
- Guttering
- Plumbing
- Tools
- Fixings
- Fasteners
- ...and lots more!

Delivery available!

i Clean Devon Window Cleaning

WINDOW CLEANING, GUTTER CLEARANCE & CLEANING, FACIAS, SOFFITS & CONSERVATORIES.

Call Paul @ 07514 – 740712 for a no obligation quote.

Email paul@icleandevon.co.uk



[WWW.FACEBOOK.CO/ICLEANDEVON.CO.UK](https://www.facebook.co/icleandevon.co.uk)

Covering Winkleigh/ Chumleigh/ Dolton/ Roborough/ Hatherleigh & surrounding villages.

**COVERING ALL EXCAVATIONS AND GROUNDWORKS
BOTH LARGE AND SMALL PROJECTS AT COMPETITIVE PRICES**

MARTIN PARISH CONTRACTING



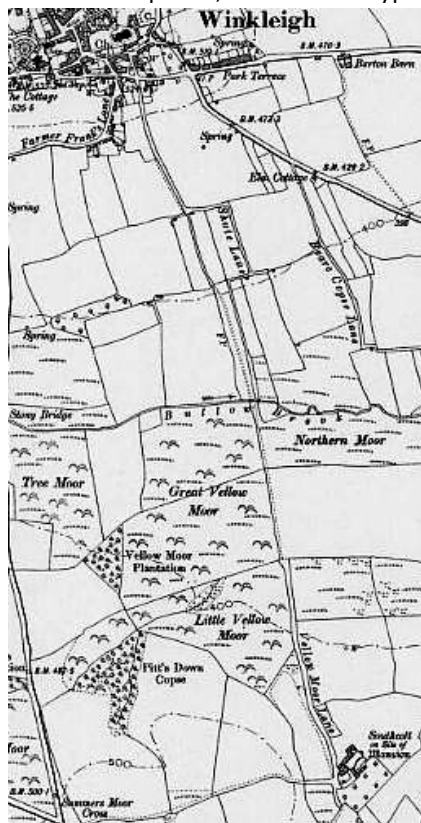
**FULLY INSURED
HEDGE-TRIMMING FLAIL &
CIRCULAR SAW
FIREWOOD PROCESSING.**

**CALL MARTIN ON 07817 46420
WWW.MPCONTRACTORS.CO.UK
FACEBOOK: MARTIN PARISH
CONTRACTING**

Village History - Shute Lane as I see it

Before I begin, I just want to let you know that I did not go to university, therefore I have no degree or archaeological qualification other than several years of digging to find the original Eggesford House and write the Lost Houses of Eggesford book. This article is entirely my own opinion from much research and common sense.

When I first noticed Shute Lane decades ago, it was overgrown and led, who knows where. I spoke to the late Terry Davey, the fount of all knowledge and someone I was most proud to call my friend. He told me it was a postman path to Southcott, but had not been used regularly for many, many years. In 1997 when the bypass came it cut right through the lane and the top half became impassable. In recent years it has been cleared a little and the surface improved, so it is now walkable, albeit wet in places, as far as the bypass and a short way on the opposite side.



I found it interesting because it has a name. There are several other lanes in the vicinity connected to Shute Lane that are also named. We have Vellow Moor Lane and Beare Copse Lane which are interlinked. Shute Lane leads from the oldest house, Southcott, which is south of Winkleigh and now the Equestrian Centre. It is mentioned in the Domesday Book with a chapel, making it almost a thousand years old. Sadly this mansion was burned down in the 19th century. From Southcott walking across Vellow Moor Lane and Great Vellow Moor, over the Bullow Brook you reach Shute Lane, which leads up the hill to the junction with Exeter Road, and would have been a major crossroad in Winkleigh. Therefore this route would have been an access road into Winkleigh for nearly 1000 years.

If you look at old maps of the area you will find that Southcott links across to Coulson and many other farms as far as North Tawton and I am sure for miles beyond. You then proceed up what we know as Church Hill and up the steps at the side of the Alms

Houses, then crossing the front of what was a much smaller Winkleigh Church. Until the current church was extended in the 14th century there would have just been the chancel with a main entrance in the west end. Shute Lane would have passed by this

door and on into the narrow lane at the side of the Mad Butchers, now called Church Lane. Shute Lane ended here as the square would always have been the centre of the village. If you bear right across the square, in front of what is now the Seven Stars, ahead of you would have been the very impressive Court Castle, built after the Normans settled the land. Winkleigh is extremely lucky to have this thoroughfare that still exists and is nearly 1000 years old ending in a castle. You don't need to have too much imagination!

Going back to the construction of the lane itself: it has a shale base which would have



been for wagons and livestock with a raised path to one side for pedestrians. The main path is constantly wet even in the heat of summer and obviously in the winter, as there are a couple of natural springs in the lane. These springs can be seen marked on the old maps.

At first I couldn't work out why such a structured lane would be needed just

for a farm but of course 1000 years ago it was a very important house and a very important roadway. The chapel was at Southcott before there was a church in the village so, like Eggesford House, the private chapel would have been used by the villagers, a lot of whom would have worked for the landowner; therefore the path had to be maintained for them, as well as for other traffic travelling between the North Tawton area to Winkleigh and beyond.

Obviously there would have been lots of cottages and a thriving self-sufficient and peaceful village. I don't think either Court Castle or Croft Castle would have seen much action except for a minor fracas during the Civil War in 1646. I understand that the Cavaliers were camped at Southcott and the Roundheads at Chulmleigh. They were all on their way to engage in battle at Great Torrington and not prepared to meet beforehand, so both armies approached Torrington from different directions. The Cavaliers were heading from Winkleigh via Beaford across the moor and the Roundheads came from Chulmleigh across the back of Riddlecombe although a minor skirmish on Beaford Moor was recorded. I have read a lot about these events and mostly it is reported that the Cavaliers left Southcott and were fired upon by a few locals from Croft Castle, where the Village Hall now stands, so maybe all Winkleigh folk were not Royalists.

This is where I disagree as the main entrance to Southcott was Shute Lane, as the lane now used to get to Southcott Equestrian Centre didn't exist until much later. In addition, the road to North Tawton as it is now was only a footpath at this time.



Therefore they would have been fired on not from Croft Castle but from Court Castle. The Cavaliers marched over Vellow Moor onto Shute Lane up the hill towards the church in early February 1646. They probably passed through the churchyard as the church had been extended in the early 14th century. Probably they marched along Court Walk past the Parsonage and around the castle, which by then was 'ruinous,' where they were fired upon by locals.

Can you imagine in February the Cavaliers marching through the village? No post, radio, or internet to alert the locals. It must have been really scary as there would have been hundreds or maybe thousands of soldiers: quite a spectacle.

If you look on the map and draw a line from Southcott to Court Castle it is almost directly along Shute Lane; there at the beginnings of Winkleigh and what remains of it must be preserved for many years to come.

Sharon Jeens

The cover picture was created by Gabriel Lawley-Jones & looks up to Court Castle.

<p>Need Help In The Garden?</p> <p>RHS Qualified, Experienced Gardener</p> <p>All Aspects of Garden Maintenance</p> <p>Planting Ideas</p> <p>Year Round Reliable Service</p> <p>Call Maxine on 01837 680039 or 07815 309023</p> 	<p>JOSH NOON</p> <p>TREE SERVICES</p> <p>TREE SURGERY &</p> <p>LOW IMPACT FORESTRY</p> <p>QUALITY SEASONED LOGS</p> <p>& KINDLING FOR SALE</p>  <p>☎ 01363 83908</p> <p>☎ 07792 906258</p>
--	---

Events Diary – 2022

All dates & details are PROVISIONAL at the time of going to press and depend on any restrictions put in place at short notice.

Please send details of your events to articles@distinctlywinkleigh.co.uk

March	
2 nd 11 am and 7 pm	Ash Wednesday Eucharist - Parish Church
2 nd from 2 – 4 pm	Memory Cafe – Community Centre
14 th starting at 7 pm	Winkleigh Society AGM – Community Centre
16 th from 2 – 4 pm	Memory Cafe (+ surgery (am)) – Community Centre
20 th from 11 am	Britannia Open Day, behind Airfield Garage
27 th at 9.30 am	Mothering Sunday Eucharist - Parish Church
April	
2 nd at 10.30 am	Blessing of the Memorial Stones, Winkleigh Cemetery
6 th from 2 – 4 pm	Memory Cafe – Community Centre
8 th starting at 7.30 pm	Winkleigh Football Club Quiz Night, Village Hall Questions - Willie Hocking & Quiz-Master Tony Aston
9 th 10 am – 12 noon	Spring Clean – Parish Church
10 th afternoon	Britannia Day: Launch Anniversary, Airfield Garage
14 th at 7 pm	Maundy Thursday Eucharist - Parish Church
15 th at 10 am	Liturgy of Good Friday – Parish Church
16 th	Easter Day Eucharist – Parish Church
20 th from 2 – 4 pm	Memory Cafe (+ surgery (am)) – Community Centre
23 rd starts at 07.30 pm	Winkleigh Singers Queen's Jubilee Concert, St. Michael's Church, Great Torrington
May	
4 th from 2 – 4 pm	Memory Cafe – Community Centre
9 th	Last day to display Scarecrows for viewing
15 th	JScarecrow Trail maps available in Post Office and Hollocombe Hub
18 th from 2 – 4 pm	Memory Cafe (+ surgery (am)) – Community Centre

Winkleigh Platinum Jubilee Group

This Group has been newly formed for the sole purpose of organising events for Winkleigh Parish to celebrate the Platinum Jubilee of HM The Queen.

The group currently comprises members of Winkleigh Parish Council, Winkleigh Society, Winkleigh Fair Committee, Winkleigh Village Hall Committee, Winkleigh Craft Club, Friends of Winkleigh School and a small number of dedicated and enthusiastic individual members of the Parish all working together. In addition, there are several Businesses that are pledging help and support and also celebrating with their own events as well.

We are proposing a programme for Winkleigh that takes account of the National Events that are also taking place across the country. To give everyone notice of what we are hoping to do we are publishing outline details of our plans in this edition of Distinctly Winkleigh. You will appreciate that at this early stage full details of many of the events mentioned have not been fully worked out, but will be made available as soon as possible.

So far our **outline programme** is as follows:-

Bank Holiday Thursday 2nd June (there is no end of May Monday Bank Holiday)

Nationally: The Queen's Birthday Parade (Trooping the Colour)

Starting at Buckingham Palace, the Parade will move down The Mall to Horse Guard's Parade, joined by Members of the Royal Family on horseback and in carriages. The Parade will close with the traditional RAF fly-past, watched by The Queen and Members of the Royal Family from the Palace balcony.

Platinum Jubilee Beacons: The United Kingdom's long tradition of celebrating Royal Jubilees, Weddings and Coronations with the lighting of beacons will be continued to mark the Platinum Jubilee. Over 1,500 beacons will be lit throughout the United Kingdom, Channel Islands, Isle of Man and UK Overseas Territories. For the first time, beacons will also be lit in each of the capital cities of the Commonwealth countries to celebrate The Queen's Platinum Jubilee. The Principal beacon will be lit in a special ceremony at Buckingham Palace.

Winkleigh: Nothing is planned at the moment but please keep an eye out for notices of any events.

Bank Holiday Friday 3rd June

Nationally: Service of Thanksgiving: A Service of Thanksgiving for The Queen's reign will be held at St Paul's Cathedral.

Winkleigh: Daytime Events may be arranged - details to follow.

Evening: Potential Music Event in the Square. At time of going to press we are hoping to be in a position to organise the much loved and previously enjoyed “**Take a Chance on Us**” **ABBA Tribute UK Band** to provide a special Jubilee inter-generational Show in the Village Square. The cost is not within our budget but already sponsors from businesses and the public are giving generously to help us to try to secure this particular band for the whole village to watch and enjoy for free. There is a box in the Mad Butchers with envelopes for people to donate / pledge support for this event. Thank you so much to those who have already done so.

Saturday 4th June

Nationally: The Derby at Epsom: Her Majesty The Queen, accompanied by Members of the Royal Family, will attend the Derby at Epsom Downs.

Platinum Party at the Palace: The BBC will stage and broadcast a special live concert from Buckingham Palace that will bring together some of the world’s biggest entertainment stars to celebrate the most significant and joyous moments from The Queen’s seven decade reign.

Winkleigh:

Create a Crown for the Jubilee:

Winkleigh Craft Club will hold a **Crown Craft workshop** at the Community Centre - all ages welcome, but please note children must be accompanied and supervised by a parent or carer), between **10 -12 noon:** to coincide with the **Winkleigh Village Hall JUBILEE Saturday Market.** We are hoping that everyone will make crowns/headwear to wear at the Street Party the following day; there will be a competition - details to follow.

Community Centre from 2 pm: Tea Party for Adults (over 18’s) with Trevor the Piano Man. More details to follow.

Sunday 5th June

Nationally: The Big Jubilee Lunch (Street Party)

Winkleigh:

We will be holding our own **Big Jubilee Lunch ‘Bring and Share’ Street Party in the Square from 2 pm to 5 pm.** Further Details to follow.

Nationally: The Platinum Jubilee Pageant: Artistic performers, dancers, musicians, military personnel, key workers and volunteers will unite to tell the story of The Queen’s 70 year reign in an awe-inspiring festival of creativity. The London based Pageant will combine pomp and ceremony, street arts, theatre, music, circus, costumes as well as cutting-edge visual technology, drawing on talent from every part of the United Kingdom and across the Commonwealth.

Further Platinum Jubilee events taking place for Winkleigh:

We will also be holding our own **Winkleigh Platinum Jubilee Pudding Competition**. Entry will be open to all ages. Contact details are to follow.

Saturday 11th June: Airfield Garage 12 noon 'til 4 pm Car Show, BBQ and Refreshments

Winkleigh School is “working together with the Parish Council to celebrate this special event in many different ways. One of these is a **Jubilee Flag Competition** to invite children to design a flag to celebrate the event, the winning design will be made into a real flag and hoisted on the flag pole in the village.”

The Winkleigh Society is organising a **Scarecrow Trail** Competition with a ‘1952-2022 pick your decade’ theme to ‘dress your scarecrow as hippie/mod/rocker/punk etc.’

Further details to follow (but expected to be similar to previous Scarecrow Trails).

The Queen's Green Canopy

As the Platinum Jubilee year begins, over 60,000 trees have already been planted in the UK through the project in the two months since the planting season began. Green-fingered communities and cities from Cornwall to Glasgow have come together to make 2022 a truly special year to “plant a tree for the Jubilee” as a celebration of The Queen’s 70 years of service to the Nation and the Commonwealth

Winkleigh Jubilee Landmark Tree - for the Queen’s Green Canopy

The Winkleigh Biodiversity Group in conjunction with **The Winkleigh Memorial Recreation Field Trustees** will be planting a Small Leaved Lime tree in or near the Jubilee Wood on the Winkleigh Memorial Recreation Field.

The initial planting will take place sometime in March 2022; ceremony dates and times to be publicised shortly.

We are looking for individuals or volunteer groups to form a **Table Topper** and **Bunting Group** (The Colour theme for the Platinum Jubilee is Purple). Please contact a representative of one of the Winkleigh Groups mentioned above if you are willing to run or help with such a group between now and June!

There is also a call out for **volunteers to be Marshals for Road Closure Compliance**: the more who volunteer, the shorter each stint will be for everyone!

Road Closures will be on **Friday 3rd June afternoon and evening; and on Sunday 5th June**. Exact closure details will be posted nearer the time. (*Contact Aly Leah on 07512 766482*)

Janet Lillian Magor 1942-2021



Janet's parents were from Lowestoft in Suffolk, a town heavily bombed during World War 2. Janet's mother was evacuated to Merthyr Tydfil to stay with relatives and Janet was born there. Her mother returned to Suffolk, when it was safe to rejoin her mechanic husband, where her brother Roger was born.

An enthusiastic member of The Salvation Army from the age of 8, Janet loved the open-air beach meetings where she played the tambourine.

Janet took on a lot of family responsibilities from an early age which severely reduced the time she spent at school.

Aged 16, she became a trainee at a drapers store in Lowestoft but two years later, frustrated at the lack of training and responsibility, Janet took time off work to be interviewed at Bourne and Hollingsworth, a fashionable store in Oxford Street London. Luckily Janet got the job, which she loved, where she was properly trained and promoted.

Janet met Adrian, her future husband, at a London Cornish Association pasty supper. 'A dark girl dressed in blue' is how Adrian described his first sight of her and he escorted her home still in his metropolitan police uniform.

Married in 1964, they set up home in Walthamstow. Before her three children Sarah, Paul and Karen were born, Janet worked at the Ever Ready Battery Factory, where she was treated with suspicion, on account of being married to a policeman.

Moving to North London and then Shaftesbury, with all three children at University, Janet returned to the workforce as a trainee for Waitrose where she became a cheese expert.

Moving to Winkleigh in 1988 Janet joined The Church Wives where she became a pro-active member and diligent secretary organising an impressive range of events and speakers and punctilious with her write-ups for *Distinctly Winkleigh*.

Janet loved climbing, photography and travelling, as well as organising grandchildren and her family.

In tribute to her, Adrian said, "I prayed to meet a like-minded wife and from beginning to end we fitted".

Finally a Big Thank You from the Magor Family for all your support.

Adrian Magor (in conversation with Margaret Miller & Penny Griffiths)

Church Wives Group News

Now that Covid Restrictions have been eased we have resumed our monthly meetings on the second Monday of each month at 2.30 pm in the Small Room of the Village Hall. The Group welcomes all ladies as it has always done over the 60 years of its existence. We endeavour to have interesting speakers at our meetings and we hope to resume our annual Christmas fund-raiser for local charities.

We all mourn the passing of our Secretary Janet Magor. She took on the job in 2010 from Monica Cowle, who had been our Secretary for 50 years! Janet was an excellent secretary and we shall miss her presence at our meetings.

Come along ladies on the 2nd Monday of each month and see what we are about!

Jean Fletcher

The Woodland Federation Winkleigh Primary and Kings Nympton Primary Schools

The Governors are looking for a new Governor to serve on our Federation Board of Governors. Our Executive Head - Vicki Fenemore - runs two good schools which are well-supported by our local parents and children. The schools work hard to achieve good results for all our children and we have a very enthusiastic staff team which encourages children both in school with academic work and outside with PE and sports.

If you are interested in becoming a governor, it would mean 3 or 4 meetings each term. We would like to receive any applications from financially competent local people, either parents or members of the public. Please apply by letter to the school, addressed to Robin Harper, the Woodland Federation Chair of Governors, Winkleigh School, Farmer Franks Lane, Winkleigh.



HC Joinery
Bespoke Joinery Services

Harry Colgrave
Joiner

All aspects of joinery work undertaken.

Doors, windows, panelling, door canopies/porches, restoration projects, repair neglected doors and windows.

hcc2010@hotmail.co.uk
07517110668



Summerhayes, Ingleigh Green,
Winkleigh, EX19 8AT

Britannia Sailing Trust Update

Did you know that each year, the first Thursday of February is World Optimist Day? We are definitely feeling optimistic here at Britannia Sailing Trust: 2022 is already shaping up to be better than the last two years, with lots of progress on many fronts.

Britannia has started the New Year looking almost like new, with all the new planking finally finished and fixed in place. The two boat-builders are slaving away with a complicated rebuild of the deck and coach-roof - the last remaining 'big' woodworking job on the exterior. Meanwhile, our growing crew of volunteers are busy caulking the seams between the planks with oakum, to keep her watertight when she's eventually relaunched.



Seb with Sam

We've welcomed quite a few new faces over the last few months and have just taken on a new apprentice - 18 year old Seb - who has been inspired to become a wooden boat-builder! The government's Kickstart Scheme - supposed to fund training and employment opportunities for 18-25 year olds - has failed us miserably, so we're having to take matters into our own hands and employ him out of our own pockets until we can get funding to support his training.

Any donations to help us keep Seb on board would go a long way and would be greatly valued, since our lottery funding does not cover such things. If you think you can spare a small one-off or monthly donation,

send an email to Vicki at britannia1915@gmail.com or you can make a PayPal payment to that email address indicating that it's for Seb's apprenticeship. We will keep any donations aside for him. By helping Seb to realise his dream of becoming a traditional wooden boat-builder, we can ensure there are still people to build and care for ships like Britannia for many generations to come - one of the Trusts core missions.

Volunteers have been making some lovely items from offcuts and bits and pieces - 'Britannia' doorstops, cleats and coat-racks can all be found for sale in our online shop at www.BritanniaSailingTrust.org, with more to come soon. All funds raised go directly to the restoration. We'll be taking a stall at the Saturday Winkleigh Market every month, starting in February, so do feel free to drop by for a chat and to see what we have on display.

We will be having an open day on **Sunday, 20th March** as part of National Lottery Open Week. Do come along to the boat tent at **Airfield Garage**, any time after 11 am, to have a tour of the ship and the workshop, enjoy a 'brew with the crew' and see some displays and demonstrations of centuries old shipwrights' skills and techniques (even have a go at some of them!).

And while you've got your diary out, we're also pleased to announce that **Sunday, 10th April is Britannia Day, 2022:** an afternoon of festivities and entertainment to commemorate the ship's original launch date in 1915. We hope to see many of you there for rum and shanties, a knot workshop, activities, demos, and more!



THE BIGGEST FISHING BOAT.—Last Thursday evening a large number assembled at Mr. W. Worfolk's boatbuilding yard on the Friars to witness the launch of the *Britannia*, a fishing boat designed and built by Mr. Worfolk for Mr. Alfred Rake, of Birchwood-street. The boat is the biggest built in Lynn for 40 years and will be the largest used in the Lynn fishery. She is 58ft. over all; beam, 13ft. 9in.; depth of solid work, 9ft. 2in.; bulwark, 20in. The launch was made on the very high tide registered on Thursday evening and was most successful. The boat was christened by Mr. W. R. Sadler, and others present were Mr. Worfolk, Messrs. G. and W. Worfolk, Major E. H. Evans-Lombe, Capt. E. M. Beloe, Messrs. G. G. Sadler, J. C. Woodend, W. Lancaster, A. R. King, A. J. Smith, D. J. Coates, J. J. Howard, T. Blott, J. Gage and W. W. Wilkin, with many others, including several ladies.

Photocopy of the report in the Kings Lynn Advertiser of 1915 of Britannia's launch!

If you would like any further information please phone **Vicki or Sam** on 01837 680036, or call by the Britannia shed, just behind Airfield Garage and the Winkleigh Car Wash. Workdays at the moment are Monday, Tuesday and Wednesday, but we can always be there at other times if you let us know you intend to visit. Visitors are always welcome!

Kinangop Cattery on Winkleigh Airfield

Kinangop Cattery is a new 4-star licenced cattery on Winkleigh Airfield. It is a small cattery with very high standards and individual attention for each cat. It caters for individual cats or two cats sharing. All sleeping quarters are more spacious than legislated requirements, comfortable and heated. The indoor exercise areas have barriers and viewing platforms with perfect views over the countryside.



Pauline Metcalfe, who owns and runs the cattery, has worked with animals all her life, so she can offer personal and experienced attention. If necessary she can administer medication to any cat in her care. Pauline prefers owners to bring their own food as their cat is used to it as well as toys to minimise any stress of being separated from their owners. She also has long opening hours for delivery and collection of the cats on either weekdays or over weekends.

Pauline can be contacted on 07748 608308,
kinangopcattery@gmail.com, or see
www.kinangopcattery.co.uk



The PC Geek your computer...
not working got a virus
Collecting dust in the corner
call Andy Carnegie

PC repairs
Health checks

Upgrades

Web Design

Office/admin services

New and refurbished computers

Established 15 Years

£48 first hour
then

£12.00 every 30min



www.tpcgeek.co.uk

Tel: 07903 566861

Email: tpcgeek@hotmail.co.uk



VISA

Still no Bacon Roll Time

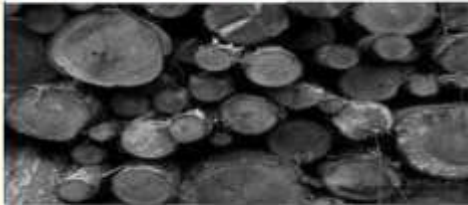
Sorry but there will not be Bacon Roll Time again this year.

As most of you know we have invited you all into our home once a year for 16 years serving bacon rolls, tea, coffee and lots of chat. What wonderful times we have had and to date this event has raised £9675 for Cancer Research UK. This charity is so close to our hearts as it is to many of you and we were so looking forward to breaking the £10000 in 2020 but Covid had other ideas and the same again last year.

Still we do not feel the time is right just yet to hold such an event this year but rest assured it will be back and we will reach that target. We can't thank you enough for all your support in the past, so watch this space. We will be back.

Jan and Dave Ovenden

Local Logs



Dry seasoned hardwood
All stored under cover & delivered in
Chulmleigh & surrounding area.

Truck Load £90
Double Load £180
Trailer Load £280
Net of Logs £5
Net of Kindling £5

Martin 07817 464420 parish@btinternet.com
www.mpccontracts.co.uk

MTF CONTRACTING

A local experienced service for all your needs



- Agricultural Fencing
- Garden Fencing
- Tree Surgery
- Landscaping
- Fully Insured and Qualified
- Free no obligation quotes



T: 01837 83325

M: 0777207 8028

www.mtfcontracting.co.uk



Moortown Farm, Winkleigh, EX19 8HA



Winkleigh Volunteer Service

Need a lift to a medical appointment, shopping,
prescriptions collected, etc?

Then contact Winkleigh Volunteer Service.

Phone Angie Findlay on 01837 682616.

Want to Volunteer? Then please give me a call.

Please note: Volunteers charge the standard rate of 45p per mile,
but give their time for free.

Okehampton Choral Society

You are warmly invited to join the Okehampton Choral Society and friends as they celebrate:

‘LEAVING LOCKDOWN’

In an hour of live music made by local musicians starting at 3.15 pm on Saturday 2nd April, 2022 at Fairplace Church in Okehampton, the informal programme will appeal to people of all ages. Families will be most welcome.

We shall enjoy guest performances from our friends Ruth Penrose (clarinet), Robbie Cassels (Piano), John Courtie (trumpet) and ‘The Sampford Stompers’.

ADMISSION is FREE - there will be a retiring collection.

MDM
MID DEVON
MOTOR CO.
Exeter Road, Winkleigh, EX19 8JJ
Tel: 01837 83334
www.middevonmotor.co.uk

YOUR COMPLETE ELECTRICAL SERVICE



We have more than 28 years of experience in electrical contracting throughout Devon.

- » Rewiring
- » New consumer units
- » Minor works
- » New installations
- » Energy saving and LED
- » Fault finding
- » Emergency call outs



We'll take care of it.

**Call us now for a
free estimate and advice.**

Winkleigh - 01837 83900

Bedwell Electrical
The Airfield, Winkleigh
Devon, EX19 8DW

info@bedwellelectrical.co.uk
www.bedwellelectrical.co.uk



Exciting Changes at Down Farm

Down Farm is an organic market garden just outside Winkleigh. We grow a range of produce and sell it within a 30 mile radius of the farm: at Crediton and Exeter Farmers Markets, our veg box scheme, online shop and via local shops and restaurants in the summer months.

This year sees some exciting changes happening at the farm, including transforming the business into a cooperative growing project and increasing the capacity of our veg box scheme. This summer we will also be opening our new community barn and



Chloe & Josh

starting a flower CSA (Community Supported Agriculture) scheme, where customers are invited to have a seasonal share of the flower harvest every week.

As a new growing cooperative we are pleased to welcome friends and fellow market gardeners Chloe Eversfield and Josh Motteram to the Down Farm team. They have previously run a market garden in

Buckfastleigh and were looking to move, whilst we were also looking for more secure



DOWN FARM

Growing food, feeding the community

Organic produce from our cooperative farm and local suppliers.

Online farm shop OPEN weekly **Friday - Monday** for delivery on Fridays. Order online or via phone.

.....

- VEG - VEG BOXES - SALAD - HERBS - FRUIT - MILK -

- NEW FOR 2022! JOIN OUR FLOWER CSA TO RECEIVE A WEEKLY SHARE OF OUR FLOWER HARVEST -

.....

Farmers Olivia, Henry, Josh & Chloe

07739892488 / 07595005482 | www.down-farm.com

hello@down-farm.com



help with the growing for our business. It seemed an obvious solution for us to go into business together! We will be working together; continuing to grow a range of delicious and organic veg. They are bringing with them another poly-tunnel for our ever increasing supply of summer and winter crops, years of experience and a lot of enthusiasm!

Our community barn is almost ready to be opened; just a few finishing touches are left. It will be equipped with tables, a kitchen and a wood fired oven overlooking our market garden. We will be having a launch party in the summer (date tbc) as well as a few food-based events over the year. The barn is there to be used for the community so please get in touch if you

have something in mind: workshop, meetings, social groups or more!

We have opened up a few more spaces on our veg box scheme due to increased demand. We supply weekly and fortnightly veg boxes with a range of seasonal produce from our farm and other local suppliers to plug any gaps. Veg boxes start from £12 and are available from February to December. We pick veg fresh every week and deliver to homes or collection points every Friday.

Want to sign up for a veg box or flower CSA? Learn more about the community barn? Get in touch with Liv or Chloe on 07739 892488 or 07595 005482 or email us at hello@down-farm.com.

More information on our veg boxes can also be found on our website www.down-farm.com

We look forward to seeing you at the farm in 2022!

Storage containers to rent near Winkleigh

20 foot x 8 foot x 8 foot high

Long or short term rentals, from £20 per week

For more details please call Julian on 07947 877284

or e-mail julian.tolley@btinternet.com

W H T Letting



**TREE
REMOVAL**

**HEDGE
CUTTING**

PRUNING

**STUMP
GRINDING**


07843149229



TIMBERLADS.TREESURGERY@GMAIL.COM



**All aspects of pest control undertaken for your domestic,
agricultural and commercial requirements throughout
Devon.**

**BPCA Qualified. Experienced Friendly Technicians.
Correctly Insured.**

**Please call Paul - 07714239656 or
Ken - 07814306548**

Email: paul@greenvalleypestcontrol.co.uk

Web: www.greenvalleypestcontrol.co.uk



The Airfield Garage Car Show

June 11th 12pm to 4pm
Jubilee Year Special

Have a car or a bike that you love to show off?

Bring it along and do just that. Whether it is an old classic, vintage or brand new, come along and enjoy a gathering with other like minded people. We'd love to see you.



To guarantee a space to show your vehicle you must pre-book in advance.
Call us on 01837 682678 or email us nicky@airfieldgarage.com



BBQ, refreshments and
Sam's Cider will be on site!



Airfield Garage, Sockington Cross, Winkleigh, Devon EX19 8EY | www.airfieldgarage.com

AIRFIELD General Maintenance & Repair Garage

- MOTs • Vehicle Diagnostics
- Clutches & Cambelts • Brake & Brake Repair
- General Maintenance • Air Conditioning
- Servicing • Bodywork & Restoration



01837 682 678
www.airfieldgarage.com

Winkleigh YFC News

YFC in the last few months have been quiet for us in Winkleigh.

Following our tractor run in the last article, we uncovered our carnival float and decorated it with the theme of Post Lockdown after Party. We attended Okehampton, Hatherleigh and Holsworthy carnivals. We have had club 10-pin bowling and skittles socials and our Christmas meal during the winter months.



Unfortunately, the Devon YFC Christmas ball was cancelled which was a shame as lots of members were excited to dress up smartly. To add to that, we had to cancel our disco in January which was going to be our second main fundraiser for the YFC year, however we hope to reschedule it for Easter.

Luke Stevens, our current Secretary, has been busy competing in speaking competitions (After dinner speaking and Brainstrust) with great success. At the end of January we had some of our members join the Tarka Group team for men's dodgeball in the Devon round, they had great fun and loved a bit of competition with fellow clubs.

At the time of writing this we have our 'blind drop' coming up which will be our first event of the 2022 year with more events hopefully to follow. We all hope 2022 will be a better year for all than the last couple of years. If you would like any further information regarding the Senior club, please contact me, James Pearce on 07541318077; for information regarding the Mini Club, please contact Danielle Bradford on 07544 940197. Alternatively, please take a look at our Facebook pages for updates: 'Winkleigh YFC' or 'Winkleigh Mini YFC'.

James Pearce



Spirebourne Limited

Liquid Waste Disposal and Drainage Co.

EMERGENCY CALL OUTS

Septic Tank/Cess Pool Emptying – Any Size
Grease Traps
Drain Blockage Clearance
Various Commercial Liquid Waste Disposal
Servicing
CCTV Drainage Surveys
Pump Repairs & Renewals
Installation of Septic Tanks & Sewage
Treatment Works
Mantair Units

FREEPHONE 08000 855 185

spirebourne@hotmail.co.uk
www.spirebourne.co.uk

Ron Bendell – A Tribute

What a character eh? He of the jaunty gait and the genial guffaw.

Our friendship was cemented at my 40th birthday bash, which he had been persuaded to attend. There it transpired that we both shared a love of Austria: him the lakes region and me the Tyrol. Senior Bendell had gone over from Somerset with the Anglo Austrian Society and at some stage a younger Ronnie was imbued with the same love of anything Österreichische.

As the editor of a local rag in the early '90's I bagged an exclusive interview in the bar of the Duke of York; by then he was a weatherman for West Country Television. Typically he would tumble through the front door after a day's filming claiming that he had had nothing to eat all day. "So how do you manage to be on the telly at 10:40 at night and you are here in The Duke at the same time? "Are you a hologram or something?" Two years later, with me gainfully employed as one of his drivers for 12 months, I found out. A little piece to camera would be recorded after the 6:30 pm weather report to be aired later, then it was a race out of the studios for a dash home via Whiddon Down in the trusty white Subaru. There was a pattern to these trips: he would doze until the second telegraph pole up from the first dip, light up a fag and then we would both muse as to whether Benjie Bendell (his trusty old terrier) would be okay when we got back to 'Corstone'.

As one of his trio of drivers in the mid '90's he introduced me to the media world. We covered the fishing dispute in Penzance, the production of Yarg cheese in Cornwall, heavy horse ploughing in Somerset and the tasting of laver in Northam. In between driver duties I would busy myself in the West Country canteen assembling the next edition of 'Taw Valley Post'. However one hot day I sneaked off the premises to Langage Farm and later entered the newsroom brandishing ice creams aptly named 'thunder and lightning'. There was much hilarity. On these work trips he loved pit stops for fuel where when spotted, folks would say, "yer you got it wrong last night didn't you Bendell" or the converse.

Following a move to 'Zephyr' (from the Greek, a windy place and a quite aptly named abode for a weatherman) the site soon became legendary for his Boxing Day parties. They were always full of bon viveur and plenty of traditional fare to soak up the booze!

Ronnie was undeniably a talented wordsmith – brilliant pieces crafted on the back of fag packets and even more brilliant pieces when his mood was more subdued notably the one concerning the very old friend (cheek) who bought him a bird feeder.

Kate Lowe

Introducing Honza's

Your local supplier of French Delicacies and Toiletries

Jan Nesmerak moved in with his girlfriend Tamsin in Winkleigh last August, having moved to the UK from the Czech Republic in 2007, where the name Jan ('John') has a familiar version of Honza.

Jan has long been a keen traveller to France and loves their culture and cuisine. He's also very health conscious and struggled to purchase pâtés here that weren't laced with preservatives, such as sulphites, which can trigger allergies, exacerbate asthma and cause unpleasant skin and gastrointestinal symptoms. He therefore started returning home with delicacies, selling any surplus goods on eBay and Amazon, to fund future trips.

Jan was last in France in January of 2020 and also purchased French toiletries, as these were more affordable, natural and ethical. When the first lockdown started, Jan started importing directly from France and Honza's was launched as a business venture. Things went well, with customers keen to savour more exotic flavours while they were stuck at home, pamper themselves while they had more time, or actually just wash themselves despite the supermarket soap shortages!

Jan has had to overcome the Brexit red tape, and is currently the only UK importer of the La Cigalle toiletries brand, direct from their factory. He's enjoyed getting out and meeting lots of you at the local markets (when he's not at his Tesco day job). It's been lovely to be

warmly received, with customers sampling his goods and enjoying having something a bit different in the village.

Jan also stocks certified Savon de Marseille soaps and le Petit Marseillais toiletries, including shower gels, shampoos and conditioners, including some organic, vegetarian and vegan friendly lines.

On the delicacies side, several customers have asked for Foie Gras, but Jan does not stock this due to the inhumane production methods. Instead he sells responsibly sourced, chemical/additive free pâtés, terrines, rillettes and chestnut jam. All of these are gluten free; some are also egg/dairy free, with hampers available.

With the current climate and difficulties travelling abroad, what better way to taste and smell the sunny delights of France!

Tamsin Woodland



You can't follow the sun every day,
so let the sun follow you

Jan Nesmerak
*Purveyor of quality but affordable, ethical,
natural, French toiletries and delicacies*

Soaps	Pâtés
Shower Gels	Terrines
Shampoos & Conditioners	Rillettes
	Hampers

Hypoallergenic, Organic, Vegan & Vegetarian friendly options Additive & Chemical free:
Gluten & Dairy free options

Browse: honzas.sale/amazon honzas.sale/eBay
Order direct for free local delivery and reduced prices:

Facebook Messenger: @Honza's
honzas.shop@gmail.com
07532 397313

Wednesday Coffee Mornings in the Community Centre

As all our regulars will know, for many years there has been a coffee morning held each Wednesday in the Community Centre alongside a mini-market, starting at 9.30 for an hour or so. Currently a small group of volunteers take it in turns each week to serve coffee, tea and hot chocolate as well as a biscuit to everyone who comes along, in return for a donation to Cancer Research UK and a chance for a chat.

All your £1 or so donations each Wednesday add up over a year and as a result we have been able to send a cheque for £1000 to Cancer Research UK. This amount includes a few donations from individuals and also the money donated in the CR-UK collection goblet at the Bakery Stores. Our only expense is the hire of the Community Centre. Since the lockdowns, the coffee mornings take place in part of the main hall around a number of tables, making for a very sociable and friendly get-together. If you have never come along, please think about doing so as you would be made very welcome.

Thank you very much for supporting this worthy cause.

Godfrey Rhodes

CR-UK Winkleigh Committee Treasurer



The banner features a large background image of Chulmleigh College with its crest and name. Below this, there are three smaller images: two students in school uniforms looking at a book, a group of students playing a team game on a field, and a student working on a project. Text in the center promotes the college's GCSE results and extra-curricular activities. The bottom section contains contact information for the college's website, email, and phone number, along with social media links for Facebook and Twitter.

CHULMLEIGH COLLEGE

Why choose Chulmleigh?
Best regional GCSE results for 5 years running
Excellent extra-curricular opportunities in outdoor education, music, drama & sport.
We welcome visits for you to see how we can help YOUR child achieve 'Nothing But Their Best'

www.chulmleigh.devon.sch.uk 01769 580215
admin@chulmleigh.devon.sch.uk @ChulmleighCollege

ACE - Spring News

To be honest we haven't done very much at all since last December. Winter is usually our quiet period. Not that the Dig Director would agree; she has been sorting contexts, pictures, doing magic things on computers to draw everything and trying to write up the interim report for 2021. As there were very few finds from last year's dig they have now mostly been dealt with and will soon be catalogued.

Our first ACE Day this year was cancelled due to illness mostly, not Covid luckily but other coughs and colds are available.

Our second ACE Day went ahead though and more of the dig site has been cleared ready for this year's sun filled two weeks. We have to time our site clearing carefully as we do not want to interfere with the nesting season. By the time we get back there to start excavation the birds should have flown.

Our dig dates for this year are 16th to 31st July and we hope to have an open day. Possibly around the 23rd but do check the website for details if you are interested.

We hope to start sorting out the pottery finds this year. Now almost all have been catalogued we need to date them; that is the difficult bit! We also need a lot of space to spread the finds out so that we can do this and also leave them in place so that we can come back to it all easily. Luckily two of our members have workshop space and once that has been cleared out and the mouse population reduced a little, we will be able to use it, when the weather has warmed up as there isn't much in the way of heating.

Our other Ace Days are filled up and you can check them out on the website. We'd love to see you.

Erica Williamson

ACE Archaeology Club, Publicity and Social Media Editor (February 2nd 2022)

<https://acearchaeologyclub.wordpress.com/>

WINKLEIGH AERIALS

0800 0930 625 Mob 07970 963450

UPGRADED AERIALS
FILTERS TO REMOVE INTERFERENCE

 **City & Guilds Qualified** 

AXA Insured

Trade member for over 40 Years
Discount applied for Pensioners. Free surveys

Wifi - Cctv - Camera to your TV - Freesat - Dab/FM

Also; 2nd or 3rd Aerial points installed. New TV's supplied & set up

Scouting and Girl Guiding



Most people know about Scouting and Girl Guiding for young people, but did you know that adults can still belong too? Many adults are involved as leaders or volunteers, but in addition there are social organisations, where the focus is on friendship and fun, as well as community service. The Scouts is a youth organisation up to the age of 25. From 25 onwards, there is a choice of how to

continue within the worldwide movement.

In Girl Guiding, people over 18 can belong to **Trefoil Guild**. This aims to support Girl guiding (through fundraising or practical support), with a wide range of activities planned by the local group – talks, walks, outdoor challenges, learning skills, serving the community. Activities reflect the interests of the group, depending on the age and activity levels of the members. Like the Guides, “Trefoilers” can complete challenge badges – the current one is STARS - Self, Together, Action, Roam, Skills. There are no badge-testers, though, it is up to the individual or Guild to determine their challenge and carry it through. A lot of fun and friendship is had, through these groups, which meet locally (Crediton, Bideford and Barnstaple). There is also a UK-wide Internet Guild, of which I am a member. (www.trefoilguild.co.uk)

Scouting and Guiding for Adults upholds the philosophy reflected in the Scout or Guide Promise. Many readers may have joined Cubs, Brownies, Scouts or Guides and remember their Promise. It has now been updated to be more inclusive, ‘**To be true to myself and develop my beliefs**’ rather than ‘duty to God’.

The **Scout and Guide Fellowship** (www.sagf.org.uk) promotes community service and involvement in international Scouting and Guiding. Their website gives a flavour of what is going on. Members are scattered across the UK and keep in touch by newsletter, SAGF UK - Facebook Page and annual meetings. Membership is only £5 per year. I am a member and would be keen to hear from people in our area, who might like to join in supporting local units (perhaps through fundraising) or for occasional activities. Anyone with that ‘Scout and Guide spirit’ is welcome to join.

If you are interested, do get in touch with me.

Kim Melhuish, trulywildabout@gmail.com

RAY SQUIRE CONTRACTING WINKLEIGH

Hay-making, Grass mowing, Turning, Rowing up,
Small bale baling & Topping, Hedge Trimming

Give us call on – 07912316679



Chulmleigh Sports Centre EX18 7AA



- Welcoming all ages and abilities
- 3 floodlit hard surface courts
- Coaching and social play
- Interclub and North Devon league tournaments

Get in touch if you would like to play or are interested in membership

Full Membership:

Adult (over 18): £80

Juniors (no adult): £20

Single family (Adult plus kid/s under 18): £80

Double family (2 adults plus kid/s under 18): £140



**HALF PRICE
FOR
NEW MEMBERS!**

Email: chulmleightennis@gmail.com

Phone: 07969 273662 (Izzy Moser, Chair)

Facebook: [@chulmleightennisclub](https://www.facebook.com/chulmleightennisclub)

www.clubspark.lta.org.uk/ChulmleighLTC

Getting active with Ramblers Wellbeing Walks Okehampton Walk and Talk Group

It's almost impossible not to feel good when we're walking outdoors – it's a natural mood-booster! In addition, the great news is we don't need to walk far or fast to feel its effects on our health and wellbeing. Simply getting out is a tonic for our minds and bodies.

Almost all of us can manage a stroll, and Ramblers Wellbeing Walks make it easier to start walking and stay active; and you'll certainly never be short of good company. Whether you used to enjoy walking but have lost your fitness or want to get started to improve your wellness, we're all in it together. We're a friendly bunch so you'll get the warmest of welcomes. Everyone walks for their own reasons, whether to ward off illness, manage health conditions or boost their wellbeing.

We always meet at the Bandstand in **Simmons Park, Okehampton**. Just turn up or ring Pat on **01837 83487** if you have any questions. Walks are free.

Tuesday walks: start 10 am. We have a stroll, with no hills and it lasts up to 40 minutes.

Wednesday walks: start 10 am. We walk up to 90 minutes, hills included, but we stop at designated places for those who need to catch their breath! Our leaders are all trained; there is a front leader and a back leader.

Everyone is welcomed to come along and join us

Rainfall for 2021 at Horry Mill

Month	Rainfall (mm)
January	156.6
February	81.4
March	52.4
April	10.1
May	170.8
June	47.5
July	94.3
August	51.4
September	83.7
October	162.1
November	63.7
December	162.6
Christmas Day	41.9

As you may know, Horry Mill in Hollocombe is an official rainfall recording station for the Environment Agency and the table summarises the rainfall for 2020. The Environment Agency is always looking for volunteers to record rainfall.

It is quite a commitment, as they require readings to be taken every day at a set time. They provide the gauge and select the precise location, which is quite important.

We have been recording rainfall for the Agency at Horry Mill for sixteen years. You can compare the 2021 figures with those for 2020 which were published in DW 77.

Sonia Hodgson

Word Search

L	I	B	E	R	I	A	R	U	H	R	O	W	Y	Z
F	M	S	E	U	F	L	G	E	Y	C	R	I	I	A
D	O	Y	F	B	K	A	E	F	C	V	W	A	A	M
X	Z	Z	W	J	N	J	E	O	D	A	Z	I	B	B
T	A	S	U	D	A	N	R	J	I	D	I	N	I	I
P	M	I	A	M	T	O	A	C	E	N	M	A	G	A
Y	B	O	P	M	M	B	Y	G	A	A	B	Z	M	A
G	I	B	U	O	K	W	N	H	R	W	A	N	N	U
E	Q	M	B	V	I	Z	E	Y	I	R	B	A	S	I
K	U	I	L	A	M	H	K	V	H	A	W	T	X	I
A	E	A	Q	E	D	W	T	E	Q	S	E	S	U	Q
Z	L	Y	B	Z	M	W	L	E	T	G	W	G	N	M
V	U	M	X	D	Q	U	F	O	D	D	B	U	T	S
E	U	Q	V	J	A	J	B	Y	X	U	G	L	J	K
O	Q	L	N	I	G	E	R	I	A	U	M	E	J	J

BOTSWANA

MALI

SUDAN

EGYPT

MOROCCO

TANZANIA

ETHIOPIA

MOZAMBIQUE

UGANDA

KENYA

NIGERIA

ZAMBIA

LIBERIA

RWANDA

ZIMBABWE

Solution on Page 56



**Ladies & gents
Hair and Beauty salon**

For all your hair and beauty requirements

A friendly and local salon

Telephone 01837 83004

Exeter Road, Winkleigh

Established
over 30 years

Sudoku Puzzle

		9	4	5				7
			3			8		9
			6				3	5
	9				3		5	2
	2			9			8	
4	1		2				9	
9	8				2			
2		3			1			
7				8	4	6		

("Sudoku puzzles are provided by www.sudokuoftheday.com")

Solution on page 56

Sueno Beauty

Changes, Exeter Rd, Winkleigh EX19 8HW

OPEN: Mondays -Thursday 10am – 9pm

Friday 10am - 6pm

Saturday 10am – 3pm

Face, Massage and Holistic Therapies

- *Swedish Massage*
- *Deep Tissue Massage*
- *Aromatherapy Massage*
- *Pregnancy Massage*
- *Pro Crystallage Anti Aging Faciak*

Contact: 07590233607 Email: suenobeauty@outlook.com

Puzzle Solutions

L	I	B	E	R	I	A	R	U	H	R	O	W	Y	Z
F	M	S	E	U	F	L	G	E	Y	C	R	I	I	A
D	O	Y	F	B	K	A	E	F	C	V	W	A	A	M
X	Z	Z	W	J	N	J	E	O	D	A	Z	I	B	B
T	A	S	U	D	A	N	R	J	I	D	I	N	I	I
P	M	I	A	M	T	O	A	C	E	N	M	A	G	A
Y	B	O	P	M	M	B	Y	G	A	A	B	Z	M	A
G	I	B	U	O	K	W	N	H	R	W	A	N	N	U
E	Q	M	B	V	I	Z	E	Y	I	R	B	A	S	I
K	U	I	L	A	M	H	K	V	H	A	W	T	X	I
A	E	A	Q	E	D	W	T	E	Q	S	E	S	U	Q
Z	L	Y	B	Z	M	W	L	E	T	G	W	G	N	M
V	U	M	X	D	Q	U	F	O	D	D	B	U	T	S
E	U	Q	V	J	A	J	E	Y	X	U	G	L	J	K
O	Q	L	N	I	G	E	R	I	A	U	M	E	J	J

1	3	9	4	5	8	2	6	7
5	6	4	3	2	7	8	1	9
8	7	2	6	1	9	4	3	5
6	9	7	8	4	3	1	5	2
3	2	5	1	9	6	7	8	4
4	1	8	2	7	5	3	9	6
9	8	6	7	3	2	5	4	1
2	4	3	5	6	1	9	7	8
7	5	1	9	8	4	6	2	3



ALL SHINES WINDOW & EXTERIOR CLEANING

- WINDOWS
- GUTTERS, SOFFITS, FASCIAS
- SOLAR PANELS
- HOUSE WASH (SOFT METHOD)
- CONSERVATORIES
- ROOF DE-MOSS
- PATIOS, BRICK, PAVING, DRIVE-WAY



Tel: 01805 938502 - Mob: 07711079577

BESPOAK

FURNITURE & JOINERY



From the *heart of Devon* to the *heart of your home...*



✉ enquiries@bespoakjoinery.com

☎ 01837 680 030

bespoakjoinery.com



UPDATE • TRANSFORM • RESTORE

And Finally

Now that the first signs of spring are visible and Covid restrictions are being lifted, it's beginning to look promising for everyone to be able join together in celebrating the Platinum Jubilee of HM The Queen. This once-in-a-lifetime occurrence will be marked by a number of jubilee events being planned to take place in Winkleigh Parish, as you will have read in the centre of this edition. Hot on its heels will be the traditional Winkleigh Fair week, so it looks to be a busy summer.

You may have noticed that this edition of Distinctly Winkleigh is a bit slimmer than usual, due to a lack of articles. Articles on any Winkleigh-related topic are always welcome. You will have seen the Shute Lane article in this edition and the front cover picture which is one example of a subject of local interest. As another example: it would be interesting to know more about the businesses which operated from the premises around the village with shop fronts that are now-redundant and also others that have been converted for private use. Please share your memories or anything else, not forgetting your photos of the Jubilee and Fair events, with us.

The deadline for contributions to the summer edition will be NOON on Thursday 12th May 2022 with planned publication / delivery at the end of May.

Please don't wait until the last minute – you can send in items at any time.



Let us help you take the stress out of family or friends coming to visit.
Clotworthy, a period Georgian house close to the village centre,
offers 4* Gold Award accommodation.

All rooms are large and with good views, and all have en suite
facilities with free standing baths or showers.

Give us a ring for availability or send us an e-mail.

Clotworthy House Bed & Breakfast

Torrington Road, Winkleigh, Devon EX19 8HR

Telephone Susan or John Short: 01837 83709

Email: enquiries@clotworthyhouse.co.uk

Web: www.clotworthyhouse.co.uk



WINDSOR CASTLE

Message from The Queen to holders of Big Jubilee Lunches

I am delighted that you are planning to join The Big Jubilee Lunch as part of the special events to mark my Platinum Jubilee in 2022. It is my sincere hope that this will be an opportunity for communities across the United Kingdom, and further afield, to join in a spirit of togetherness and to celebrate the enormous achievements of the last seventy years.

I send my warmest good wishes to you, and all those who will join you, at what I hope will be a joyful and most memorable occasion.

ELIZABETH R.

DISTINCTLY WINKLEIGH - PUBLICATION INFORMATION

The Winkleigh Society publishes Distinctly Winkleigh quarterly at the end of February, May, August and November. Copies are delivered free of charge to all households and businesses in the Parish.

All articles submitted for publication may be subject to editing, primarily for space or layout reasons. Please email your articles to articles@distinctlywinkleigh.co.uk, or contact the Editor for delivery.

Advertisements from businesses in the local area should be emailed to adverts@distinctlywinkleigh.co.uk, or contact the Editor for delivery.

Advertising posters for community, not-for-profit events is free of charge.

Please ensure that any images you submit are of the highest possible resolution and that all articles and images are copyright-free.

The deadline for articles and adverts is NOON on the second THURSDAY of each publication month (February, May, August and November).

Please note that the views expressed in submitted material are not necessarily shared or endorsed by the newsletter team or The Winkleigh Society.

Furthermore the Society does not recommend, or accept any responsibility for, any information, goods or services advertised in adverts or articles.

ADVERTISING RATES PER SINGLE EDITION:

Quarter-page: £12.50, Half-page: £25, Full page: £50

EDITOR: Godfrey Rhodes, Winkleigh EX19 8JP - Tel: 01837 682982

PRINTERS: HEDGEROW PRINT, CREDITON, EX17 1ES - Tel: 01363 777595

WINKLEIGH SOCIETY COMMITTEE MEMBERS

<i>Chair</i>	Penny Griffiths	01837 83407
<i>Vice Chair</i>	Margaret Miller	01837 83398
<i>Hon. Treasurer</i>	Rachel Goldsworthy	c/o 01837 682982
<i>Hon. Secretary</i>	Philip Griffiths	01837 83407
<i>Committee Members:</i>	Alan Jacobs	Barbara Jenkins
	Royston Naylor	Godfrey Rhodes
	Alan Mulcahy	Adam Wonnacott



All residents of Winkleigh Parish are members of The Winkleigh Society and may attend and vote Society Meetings. Further information about the Society can be accessed online at: <https://winkleighonline.com>

<https://facebook.com/TWSDW/>
